



After due review of internal station records and documentation provided to us by program suppliers, the licensee hereby certifies that the station fully complied with the FCC's commercial limits in programs, as specified at 47 C.F.R. Section 73.670.

Station Call Sign: WRBL

Quarter: 1Q2019

David Hart

VP/General Manager

Signed: 

Date: 4/16/19



CERTIFICATION OF COMPLIANCE WITH FCC E/I AND PUBLICATION
REQUIREMENTS FOR CHILDREN'S PROGRAMMING

First Quarter 2019

WRBL-TV, during every program broadcast during the quarter that is considered educational and informational, including any and all network and syndicated program aired the E/I logo:

 X at the beginning of every program

 X throughout every program

 X WRBL-TV, when it provided scheduling information to program guide publications, identified each educational and informational children's program as having educational and informational value for children by including the E/I logo or other notation.

 X WRBL-TV provided the target age range for each educational and informational program to all program guide publishers with the scheduling information for that program.

David Hart
David Hart, General Manager

4/10/19
Date



SCRIPT: Children's Programming

LENGTH: 30 seconds

WRBL-TV 3 Children's Programming Information

WRBL News 3 schedules children's educational and informational programming on a regular basis. Descriptions of qualifying programming are maintained at the WRBL offices located at 1350 13th Avenue, Columbus, GA 31901.

All children's programming reports are filed on the 10th day following the end of each quarter in the station's public file.

Comments regarding children's programming may be sent to:

Children's Liaison

WRBL-TV 3

1350 13th Avenue

Columbus, GA 31901

On- air announcement

D. Hart

David Hart, General Manager

4/10/19

Date

CERTIFICATION OF COMPLIANCE
WITH CHILDREN'S TELEVISION COMMERCIAL LIMITS
January 1, 2019 through March 31, 2019

During the period listed above, the CBS Television Network ("CBS"), a unit of CBS Corporation, disseminated to its owned and affiliated stations the following weekly programs originally produced and broadcast primarily for an audience of children 13 to 16 years old:

LUCKY DOG
DR. CHRIS PET VET
THE HENRY FORD'S INNOVATION NATION
THE INSPECTORS
HOPE IN THE WILD
TAILS OF VALOR

All of these programs were disseminated for weekend broadcast by CBS affiliates and owned stations.

I hereby certify that the children's programming disseminated by CBS during the period January 1, 2019 through March 31, 2019 was not required to conform to the commercial time limits prescribed in the Communications Act, as amended, 47 U.S.C. §303a, and 47 C.F.R. §73.670(a)-(d) because the programming was all originally produced and broadcast primarily for an audience of children older than 12. See 47 C.F.R. §73.670, Note 2.



Matthew Margo
Senior Vice President
CBS Program Practices, New York
CBS Television Network

Date: April 1, 2019

ME-TV NETWORK COMMERCIAL LIMITS
AND WEB SITE RULE COMPLIANCE CERTIFICATION,
FIRST QUARTER 2019

FOLLOWING IS A LIST OF ALL ME-TV NETWORK PROGRAMS DESIGNED TO MEET THE EDUCATIONAL/INFORMATIONAL REQUIREMENT FOR CHILDREN THIRTEEN TO SIXTEEN YEARS OLD DURING THE FIRST QUARTER OF 2019, JANUARY 1, 2019 THROUGH MARCH 31, 2019. BECAUSE THESE PROGRAMS ARE ORIGINALLY PRODUCED FOR AND DIRECTED AT CHILDREN THIRTEEN TO SIXTEEN YEARS OLD, NEITHER THE COMMERCIAL LIMITS NOR THE WEBSITE RULE APPLY (SEE 47 C.F.R. § 73.670 (Note 2)). THIS CERTIFIES THAT ALL OF THESE PROGRAMS WERE FORMATTED (IN THE ORDER AND AT THE TIMES INDICATED) WITH THE FOLLOWING COMMERCIAL LOADS.

Children's Programs (series)

1. Program: Mystery Hunters
Times: Sundays 7:00- 8:00 AM ET {Two (2) individual half-hour episodes}
Duration: 30 minutes
Rating: TV-G E/I
Number of Network Commercial Minutes: 5:00 or less per half-hour episode
2. Program: Beakman's World
Times: Sundays 8:00- 9:00 AM ET {Two (2) individual half-hour episodes}
Duration: 30 minutes
Rating: TV-G E/I
Number of Network Commercial Minutes: 5:00 or less per half-hour episode
3. Program: Bill Nye, the Science Guy
Times: Sundays 9:00- 10:00 AM ET {Two (2) individual half-hour episodes}
Duration: 30 minutes
Rating: TV-G E/I
Number of Network Commercial Minutes: 5:00 or less per half-hour episode
4. Program: Saved by the Bell
Times: Sundays 10:00 AM- 12:00 PM ET {Four (4) individual half-hour episodes}
Duration: 30 minutes
Rating: TV-G E/I
Number of Network Commercial Minutes: 7:00 or less per half-hour episode

* * * * *

ALTHOUGH THESE PROGRAMS ARE NOT SUBJECT TO THE WEBSITE RULE BECAUSE THEY ARE PRODUCED FOR AND AIMED AT CHILDREN 13-16, NONETHELESS ME-TV NETWORK HAS

ENDEAVORED TO COMPLY WITH THE RESTRICTION ON URLs DISPLAYED WITHIN SHOWS (SEE SECTIONS 73.670(b), (c) AND (d) OF THE RULES OF THE FEDERAL COMMUNICATIONS COMMISSION, 47 C.F.R. § 73.670(b), (c) AND (d)).

NONE OF THESE PROGRAMS CONTAINED ANY URLs, WITH THE POSSIBLE EXCEPTION OF (a) FICTIONAL URLs IN PROGRAMMING, (b) URLs OF COMMERCIAL-FREE WEBSITES THAT SATISFY 47 C.F.R. § 73.670(b), OR (c) URLs, NOT UNDER THE CONTROL OF THE LICENSEE, OF NON-PROFIT OR GOVERNMENT ENTITIES WITHIN PUBLIC SERVICE ANNOUNCEMENTS AIRED ON BEHALF OF THOSE ENTITIES, OR MEDIA COMPANIES IN PARTNERSHIP WITH THOSE ENTITIES.

Prepared by:

KYLE HART/DIRECTOR OF NETWORK PROGRAMMING & OPERATIONS- ME-TV NETWORK
4/1/19

ION Media Networks, Inc.
Children's Programming Certification

First Quarter 2019

In its capacity as originator and distributor of the ION Television, ION Life and Qubo network feeds, ION Media Networks, Inc. hereby certifies that, during the above-referenced time period:

1. The children's programming, including the commercial spots and promotional content contained therein, as broadcast on the ION Television, ION Life and Qubo network feeds (collectively, the "Programming"), complied with the Federal Communications Commission's rules and policies regarding children's programming (collectively, the "Rules").
2. Specifically, (a) the Programming complied with the commercial limits set forth in the Rules and (b) no internet website addresses were displayed during the Programming in a manner that would constitute commercial content within the meaning of the Rules.

Certified on April 1, 2019.

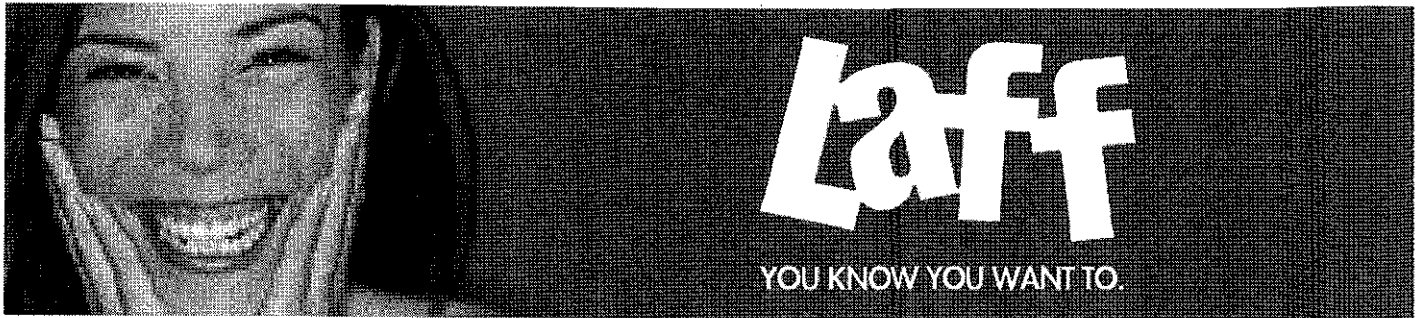
ION Media Networks, Inc.

ION Television
Children's Television Programming Report
ET Programming Information

Program Title	Origination	Scheduled Times	Telecasts (Minutes)	Length (Minutes)	Target (Age)	E/I Objective	E/I Symbol
1st Quarter							
1 Safari Tracks E/I	Network	Fridays 8:00 am and 8:30 am ET/PT (7:00 am and 7:30 am CT/MT)	26	30 minutes	13 to 16	Safari Tracks is a thirty minute program designed for a young audience range of 13 to 16 year olds that highlights the informational and educational aspects of the animal kingdom in the given environment of Africa. The series lends itself respect to the natural world and initiates discussion of issues relating to that world and encourages drawing of conclusions based upon information presented. The programs concluding segment contains a sardonically toned mock quiz that serves as reinforcement and review of the material covered in the program.	Yes
2 Animal Science E/I	Network	Fridays 9:00 am and 9:30 am ET/PT (8:00 am and 8:30 am CT/MT)	26	30 minutes	13-16	Animal Science is a half hour educational and informational program that provides interesting factsoids about a variety of animals. It is specifically produced for the 13 to 16 year old age group, but is also a highly entertaining program for a more general audience. The program's quick moving segments, and cool graphics is sure to capture the interest of the intended audience.	Yes
3 Animal Science E/I	Network	Friday (January 18) 10:00 am and 10:30 am ET/PT (9:00 am and 9:30 am CT/MT)	2	30 minutes	13-16	Animal Science is a half hour educational and informational program that provides interesting factsoids about a variety of animals. It is specifically produced for the 13 to 16 year old age group, but is also a highly entertaining program for a more general audience. The program's quick moving segments, and cool graphics is sure to capture the interest of the intended audience.	Yes
4 Zoo Clues E/I	Network	Fridays 10:00 am and 10:30 am ET/PT (9:00 am and 9:30 am CT/MT)	24	30 minutes	13-16	Zoo Clues is a 30 minute program specifically created for young people between the ages of 13 and 16. The program's presentation mix of narration, visuals, and very well chosen topics delivers education and information while it entertains. Zoo Clues will leave viewers with a meaningful perspective about animals and meaningful comparison to their own human characteristics. The show's clever narration links disparate information together in a way that always makes clear that what viewers see is real, natural, and relates to their own life in the real world.	Yes
5 Zoo Clues E/I	Network	Friday (January 18) 11:00 am, 11:30 am, 12:00 pm and 12:30 pm ET/PT (10:00 am, 10:30 am, 11:00 am and 11:30 am CT/MT)	4	30 minutes	13-16	Zoo Clues is a 30 minute program specifically created for young people between the ages of 13 and 16. The program's presentation mix of narration, visuals, and very well chosen topics delivers education and information while it entertains. Zoo Clues will leave viewers with a meaningful perspective about animals and meaningful comparison to their own human characteristics. The show's clever narration links disparate information together in a way that always makes clear that what viewers see is real, natural, and relates to their own life in the real world.	Yes

On Friday, January 4, 2019, two of the three E/I programs regularly scheduled on the ION Television network aired without displaying the symbol E/I due to an unforeseen technical issue. The technical issue was identified and corrected; accordingly, the episodes were rescheduled and re-aired in their entirety with the proper symbol E/I on Friday, January 18, 2019 as follows: Animal Science 10am and 10:30am ET/PT (9:00am and 9:30am CT/MT); Zoo Clues 12:00pm and 12:30pm ET/PT (11:00am and 11:30am CT/MT).

Other Matters							
1 Safari Tracks E/I	Network	Fridays 8:00 am and 8:30 am ET/PT (7:00 am and 7:30 am CT/MT)	26	30 minutes	13 to 16	Safari Tracks is a thirty minute program designed for a young audience range of 13 to 16 year olds that highlights the informational and educational aspects of the animal kingdom in the given environment of Africa. The series lends itself respect to the natural world and initiates discussion of issues relating to that world and encourages drawing of conclusions based upon information presented. The programs concluding segment contains a sardonically toned mock quiz that serves as reinforcement and review of the material covered in the program.	
2 Animal Science E/I	Network	Fridays 9:00 am and 9:30 am ET/PT (8:00 am and 8:30 am CT/MT)	26	30 minutes	13 to 16	Animal Science is a half hour educational and informational program that provides interesting factsoids about a variety of animals. It is specifically produced for the 13 to 16 year old age group, but is also a highly entertaining program for a more general audience. The program's quick moving segments, and cool graphics is sure to capture the interest of the intended audience.	
3 Zoo Clues E/I	Network	Fridays 10:00 am and 10:30 am ET/PT (9:00 am and 9:30 am CT/MT)	25	30 minutes	13 to 16	Zoo Clues is a 30 minute program specifically created for young people between the ages of 13 and 16. The program's presentation mix of narration, visuals, and very well chosen topics delivers education and information while it entertains. Zoo Clues will leave viewers with a meaningful perspective about animals and meaningful comparison to their own human characteristics. The show's clever narration links disparate information together in a way that always makes clear that what viewers see is real, natural, and relates to their own life in the real world.	



COMMERCIAL LIMITS AND WEBSITE RULES COMPLIANCE CERTIFICATION FIRST QUARTER 2019

During the first quarter of 2019 (January 1, 2019 – March 31, 2019), the following Educational/Informational programs tailored to meet the requirements for teens 13 – 16 years old appeared on the LAFF Network. As a result of these programs originally being created for and directed at teens 13 and above, the rules (47 C.F.R. § 73.670) for commercial limits and websites do not apply.

E/I Programs (series)

Program: *Jack Hanna's Animal Adventures* (January 1, 2019 – March 31, 2019)
Time: Saturdays 10:00 AM - 10:30 AM ET
Duration: 30 minutes
Rating: TV-G E/I

Program: *Jack Hanna's Animal Adventures* (January 1, 2019 – March 31, 2019)
Time: Saturdays 10:30 AM - 11:00 AM ET
Duration: 30 minutes
Rating: TV-G E/I

Program: *Recipe Rehab* (January 1, 2019 – March 31, 2019)
Time: Saturdays 11:00 AM - 11:30 AM ET
Duration: 30 minutes
Rating: TV-G E/I

Program: *Recipe Rehab* (January 1, 2019 – March 31, 2019)
Time: Saturdays 11:30 AM - 12:00 PM ET
Duration: 30 minutes
Rating: TV-G E/I

Program: *Henry Ford's Innovation Nation* (January 1, 2019 – March 31, 2019)
Time: Saturdays 12:00 PM - 12:30 PM ET
Duration: 30 minutes
Rating: TV-G E/I

Program: *Henry Ford's Innovation Nation* (January 1, 2019 – March 31, 2019)
Time: Saturdays 12:30 PM - 1:00 PM ET
Duration: 30 minutes
Rating: TV-G E/I