

NewsChannel 5^{HD} NETWORK

CERTIFICATION OF COMPLIANCE WITH STATUTORY LIMITS AND SECTION 73.670 (COMMERCIAL LIMITS IN CHILDREN'S PROGRAMS)

OCTOBER 1, 2016 – DECEMBER 31, 2016

FOR THE PUBLIC FILE

In 4th Quarter 2016, WTVF broadcast programs primarily geared towards children that are ages 13-16. No programs broadcast during the 4th Quarter were primarily broadcast for children 12 and younger.

WTVF - CBS (5.1)

There were no programs designed for children twelve years old and younger scheduled for broadcast during this period.

WTVF – NewsChannel 5 Plus (5.2)

There were no programs designed for children twelve years old and younger scheduled for broadcast during this period.

WTVF – LAFF TV (5.3)

There were no programs designed for children twelve years old and younger scheduled for broadcast during this period.


Lyn Plantinga, VP & General Manager
WTVF

DATE: _____

1-3-17

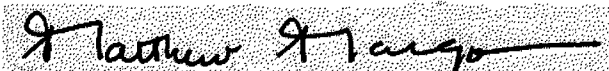
CERTIFICATION OF COMPLIANCE
WITH CHILDREN'S TELEVISION COMMERCIAL LIMITS
October 1, 2016 through December 31, 2016

During the period listed above, the CBS Television Network ("CBS"), a unit of CBS Corporation, disseminated to its owned and affiliated stations the following weekly programs originally produced and broadcast primarily for an audience of children 13 to 16 years old:

LUCKY DOG
DR. CHRIS PET VET
HENRY FORD'S INNOVATION NATION
THE INSPECTORS
CHICKEN SOUP FOR THE SOUL'S HIDDEN HEROES
THE OPEN ROAD WITH DR. CHRIS

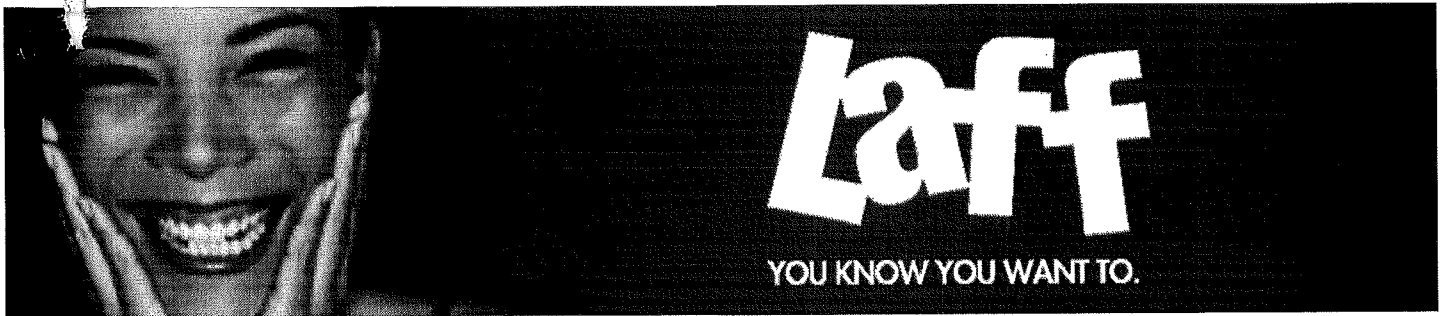
All of these programs were disseminated for weekend broadcast by CBS affiliates and owned stations.

I hereby certify that the children's programming disseminated by CBS during the period October 1, 2016 through December 31, 2016 was not required to conform to the commercial time limits prescribed in the Communications Act, as amended, 47 U.S.C. §303a, and 47 C.F.R. §73.670(a)-(d) because the programming was all originally produced and broadcast primarily for an audience of children older than 12. See 47 C.F.R. §73.670, Note 2.



Matthew Margo
Senior Vice President
CBS Program Practices, New York
CBS Television Network

Date: January 3, 2017



COMMERCIAL LIMITS AND WEBSITE RULE COMPLIANCE CERTIFICATION FOURTH QUARTER 2016

During the fourth quarter of 2016 (October 1, 2016 – December 31, 2016) the following Educational/ Informational programs tailored to meet the requirements for teens 13 – 16 years old appeared on the LAFF Network. As a result of these programs originally being created for and directed at teens 13 and above, the rules (47 C.F.R. § 73.670) for commercial limits and websites do not apply.

E/I Programs (series)

Program: Jack Hanna's Animal Adventures (October 1, 2016 – December 31, 2016)
Time: Saturdays 10:00- 10:30 AM ET
Duration: 30 minutes
Rating: TV-G E/I

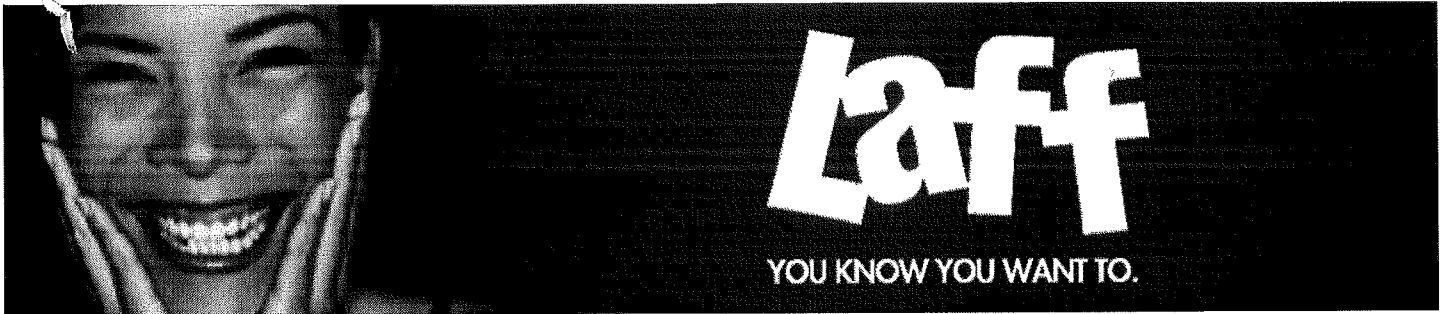
Program: Outback Adventures With Tim Faulkner (October 1, 2016 – December 31, 2016)
Time: Saturdays 10:30- 11:00 AM ET
Duration: 30 minutes
Rating: TV-G E/I

Program: Outback Adventures With Tim Faulkner (October 1, 2016 – December 31, 2016)
Time: Saturdays 11:00- 11:30 AM ET
Duration: 30 minutes
Rating: TV-G E/I

Program: Reluctantly Healthy (October 1, 2016 – December 31, 2016)
Time: Saturdays 11:30- 12:00 PM ET
Duration: 30 minutes
Rating: TV-PG E/I

Program: Food For Thought With Claire Thomas (October 1, 2016 – December 31, 2016)
Time: Saturdays 12:00- 12:30 PM ET
Duration: 30 minutes
Rating: TV-PG E/I

Program: Food For Thought With Claire Thomas (October 1, 2016 – December 31, 2016)
Time: Saturdays 12:30- 1:00 PM ET
Duration: 30 minutes
Rating: TV-PG E/I



COMMERCIAL LIMITS AND WEBSITE RULE COMPLIANCE CERTIFICATION FOURTH QUARTER 2016

During the fourth quarter of 2016 (October 1, 2016 – December 31, 2016) the following Educational/ Informational programs tailored to meet the requirements for teens 13 – 16 years old appeared on the LAFF Network. As a result of these programs originally being created for and directed at teens 13 and above, the rules (47 C.F.R. § 73.670) for commercial limits and websites do not apply.

E/I Programs (series)

Program: Jack Hanna's Animal Adventures (October 29, 2016 – November 12, 2016)
Time: Saturdays 1:00- 1:30 PM ET
Duration: 30 minutes
Rating: TV-G E/I

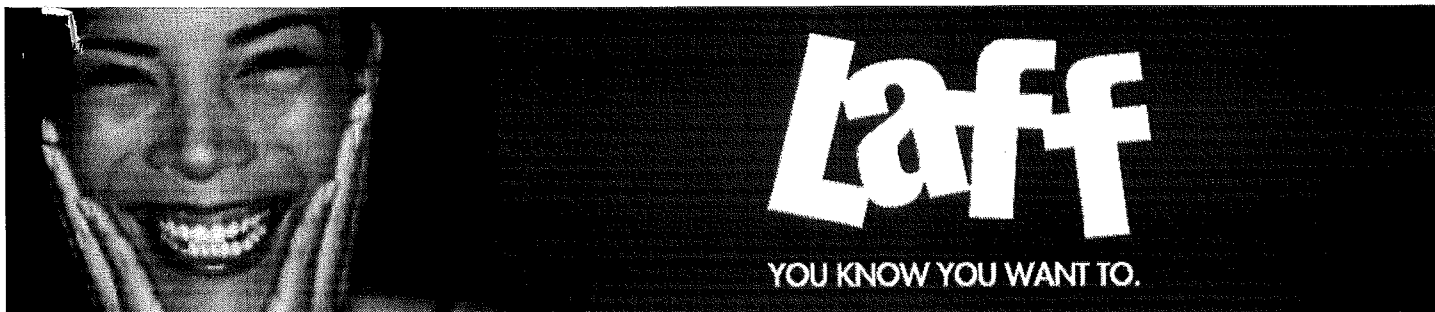
Program: Reluctantly Healthy (October 29, 2016 – November 19, 2016)
Time: Saturdays 2:00- 2:30 PM ET
Duration: 30 minutes
Rating: TV-PG E/I

Program: Food For Thought With Claire Thomas (October 29, 2016 – November 26, 2016)
Time: Saturdays 2:30- 3:00 PM ET
Duration: 30 minutes
Rating: TV-PG E/I

Program: Outback Adventures With Tim Faulkner (November 19, 2016)
Time: Saturdays 1:00- 1:30 PM ET
Duration: 30 minutes
Rating: TV-G E/I

Program: Outback Adventures With Tim Faulkner (October 29, 2016 – November 26, 2016)
Time: Saturdays 1:30- 2:00 PM ET
Duration: 30 minutes
Rating: TV-G E/I

Program: Reluctantly Healthy (December 3, 2016)
Time: Saturdays 1:00- 1:30 PM ET
Duration: 30 minutes
Rating: TV-PG E/I



COMMERCIAL LIMITS AND WEBSITE RULE COMPLIANCE CERTIFICATION FOURTH QUARTER 2016

During the fourth quarter of 2016 (October 1, 2016 – December 31, 2016) the following Educational/ Informational programs tailored to meet the requirements for teens 13 – 16 years old appeared on the LAFF Network. As a result of these programs originally being created for and directed at teens 13 and above, the rules (47 C.F.R. § 73.670) for commercial limits and websites do not apply.

E/I Programs (series)

Program: Food For Thought With Claire Thomas (November 26, 2016)
Time: Saturdays 2:00- 2:30 PM ET
Duration: 30 minutes
Rating: TV-PG E/I

Program: Jack Hanna's Animal Adventures (December 3, 2016)
Time: Saturdays 1:30- 2:00 PM ET
Duration: 30 minutes
Rating: TV-G E/I