

WCMH

Period Covering: 4th Quarter 2017

CHILDREN'S TV PROGRAMMING COMMERCIAL LIMITS CERTIFICATION

The station certifies that all children's TV programs produced and broadcast primarily for children ages 12 years of age and under aired by the station during this quarter (which are listed below) were formatted by the program provider and broadcast by the station so that, as a matter of standard policy and practice, the programs would not exceed the commercial matter time limits of § 73.670(a) of the FCC's Rules:

Weekdays: 12 minutes in any clock-hour of children's programming (6 minutes in a stand-alone half-hour program)

Weekends: 10.5 minutes in any clock-hour of children's programming (5.25 minutes in a stand-alone half-hour program)

Program Title:

- **Secret Millionaire's Club (4.3)**
- **Thomas Edison's Secret Lab (4.3)**

1. Station certifies that at no time during this quarter were the commercial matter time limits (stated above) exceeded during any children's programming produced and broadcast primarily for children ages 12 and under.

YES: X NO:

If NO, details of each instance are included as an attachment hereto.

2. Station certifies that, during this quarter, it complied with the FCC's Rules regarding commercial requirements regarding the display of Internet website addresses during children's programming.

YES: X NO:

If NO, details of each instance are included as an attachment hereto.

I hereby state, under penalty of perjury, that the foregoing is true, correct and complete to the best of my knowledge, information and belief.

Signature: Ken Friedman

Title: Vice President & General Manager

Date: 1/09/2018

ME-TV NETWORK COMMERCIAL LIMITS
AND WEB SITE RULE COMPLIANCE CERTIFICATION,
FOURTH QUARTER 2017

FOLLOWING IS A LIST OF ALL ME-TV NETWORK PROGRAMS DESIGNED TO MEET THE EDUCATIONAL/INFORMATIONAL REQUIREMENT FOR CHILDREN THIRTEEN TO SIXTEEN YEARS OLD DURING THE FOURTH QUARTER OF 2017, OCTOBER 1, 2017 THROUGH DECEMBER 31, 2017. BECAUSE THESE PROGRAMS ARE ORIGINALLY PRODUCED FOR AND DIRECTED AT CHILDREN THIRTEEN TO SIXTEEN YEARS OLD, NEITHER THE COMMERCIAL LIMITS NOR THE WEBSITE RULE APPLY (SEE 47 C.F.R. § 73.670 (Note 2)). THIS CERTIFIES THAT ALL OF THESE PROGRAMS WERE FORMATTED (IN THE ORDER AND AT THE TIMES INDICATED) WITH THE FOLLOWING COMMERCIAL LOADS.

Children's Programs (series)

1. Program: Mystery Hunters
Times: Sundays 7:00- 8:00 AM ET {Two (2) individual half-hour episodes}
Duration: 30 minutes
Rating: TV-G E/I
Number of Network Commercial Minutes: 5:00 or less per half-hour episode
2. Program: Beakman's World
Times: Sundays 8:00- 9:00 AM ET {Two (2) individual half-hour episodes}
Duration: 30 minutes
Rating: TV-G E/I
Number of Network Commercial Minutes: 5:00 or less per half-hour episode
3. Program: Bill Nye, the Science Guy
Times: Sundays 9:00- 10:00 AM ET {Two (2) individual half-hour episodes}
Duration: 30 minutes
Rating: TV-G E/I
Number of Network Commercial Minutes: 5:00 or less per half-hour episode
4. Program: Saved by the Bell
Times: Sundays 10:00 AM- 12:00 PM ET {Four (4) individual half-hour episodes}
Duration: 30 minutes
Rating: TV-G E/I
Number of Network Commercial Minutes: 7:00 or less per half-hour episode

* * * * *

ALTHOUGH THESE PROGRAMS ARE NOT SUBJECT TO THE WEBSITE RULE BECAUSE THEY ARE PRODUCED FOR AND AIMED AT CHILDREN 13-16, NONETHELESS ME-TV NETWORK HAS

ENDEAVORED TO COMPLY WITH THE RESTRICTION ON URLs DISPLAYED WITHIN SHOWS (SEE SECTIONS 73.670(b), (c) AND (d) OF THE RULES OF THE FEDERAL COMMUNICATIONS COMMISSION, 47 C.F.R. § 73.670(b), (c) AND (d)).

NONE OF THESE PROGRAMS CONTAINED ANY URLs, WITH THE POSSIBLE EXCEPTION OF (a) FICTIONAL URLs IN PROGRAMMING, (b) URLs OF COMMERCIAL-FREE WEBSITES THAT SATISFY 47 C.F.R. § 73.670(b), OR (c) URLs, NOT UNDER THE CONTROL OF THE LICENSEE, OF NON-PROFIT OR GOVERNMENT ENTITIES WITHIN PUBLIC SERVICE ANNOUNCEMENTS AIRED ON BEHALF OF THOSE ENTITIES, OR MEDIA COMPANIES IN PARTNERSHIP WITH THOSE ENTITIES.

Prepared by:

KYLE HART/DIRECTOR OF NETWORK PROGRAMMING & OPERATIONS- ME-TV NETWORK
1/2/18

ION Media Networks, Inc.

Children's Programming Certification

4th Quarter 2017

I, Michael Hubner, in my capacity as General Counsel of ION Media Networks, Inc., hereby certify that, during the above-referenced time period:

1. The children's programming, including the commercial spots and promotional content contained therein, as broadcast on the ION Television Network and its digital multicast channels (collectively, the "Programming"), complied with the Federal Communications Commission's rules and policies regarding children's programming (collectively, the "Rules").
2. Specifically, (a) the Programming complied with the commercial limits set forth in the Rules and (b) no internet website addresses were displayed during the Programming in a manner that would constitute commercial content within the meaning of the Rules.

Certified on January 2, 2018.

A handwritten signature in black ink, appearing to read 'M. Hubner', is written over a horizontal line.

Michael Hubner, General Counsel
ION Media Networks, Inc.

ION Television

Children's Television Programming Report

Report reflects information for:

Q4 2017

Digital Core Programming that aired during the past three months that meets the definition of Core Programming.

The attached programming information includes descriptions and air dates/times for regularly-scheduled core programming between the hours of 7:00 am and 10:00 pm. You will need to supplement this information with information about any local preemptions, as applicable, and any other changes made by your station.

Average number of hours per week of Core Programming: 3 Hours

Title of Digital Core Program #1		Origin		
Zoo Clues E/I E/I (ION Television)		Network		
Regular Schedule	Total Times Aired at Regularly Scheduled Time			
Wednesdays 8:00 am and 8:30 am ET/PT or 7:00 am and 7:30 am CT/MT	26			
Length of Program	Age of Target Audience			
30 minutes	From			To
	13	16		
Describe the educational and informational objective of the program and how it meets the definition of Core Programming				
Zoo Clues is a 30 minute program specifically created for young people between the ages of 13 and 16. The program's presentation mix of narration, visuals, and very well chosen topics delivers education and information while it entertains. Zoo Clues will leave viewers with a meaningful perspective about animas and meaningful comparison to their own human characteristics. The show's clever narration links disparate information together in a way that always makes clear that what viewers see is real, natural, and relates to their own life in the real world.				
Title of Digital Core Program #2		Origin		
Secret Millionaire's Club E/I E/I (ION Television)		Network		
Regular Schedule	Total Times Aired at Regularly Scheduled Time			
Thursdays / 8:00 am and 8:30 am ET/PT or 7:00 am and 7:30 am CT/MT	26			
Length of Program	Age of Target Audience			
30 minutes	From			To
	8	12		
Describe the educational and informational objective of the program and how it meets the definition of Core Programming				

Secret Millionaire's Club is a series that attracts and engages young viewers, between the ages of 8-12, as they follow the exciting and often comedic adventures of four attractive role models, in narratives designed to introduce children to basic concepts in business, financial literacy, and responsible money management, as well as important practical life lessons.

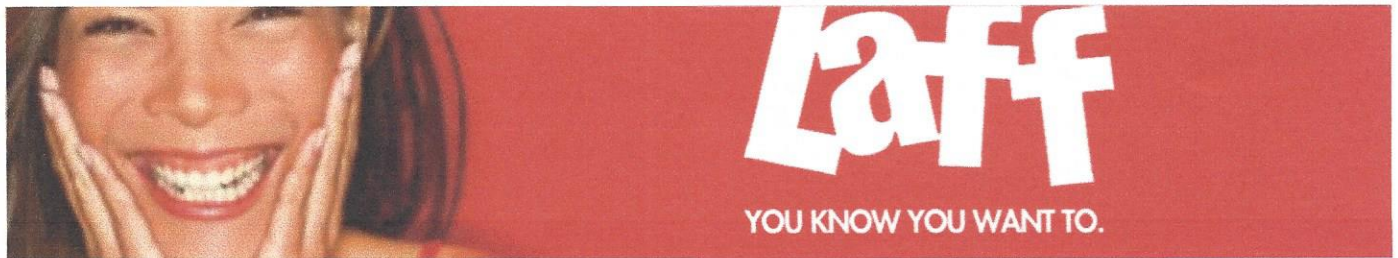
Title of Digital Core Program #3			Origin
Thomas Edison's Secret Lab E/I E/I (ION Television)			Network
Regular Schedule	Total Times Aired at Regularly Scheduled Time		
Fridays / 8:00 am and 8:30 am ET/PT or 7:00 am and 7:30 am CT/MT	26		
Length of Program	Age of Target Audience		
	From	To	
30 minutes	8	11	
Describe the educational and informational objective of the program and how it meets the definition of Core Programming			
Thomas Edison's Secret Lab presents accurate, age appropriate scientific principles and concepts by portraying appealing young role models with whom young viewers can easily identify, in clever, comedic and wildly visual science based problem situations. It explores in the context of can do enthusiasm that characterized Thomas Edison's life and experiences. It invites young viewers to join in the adventure of science by making it interesting, challenging, and fun.			

Other Matters

NEXT QUARTER – Q1 2018

Title of Digital Core Program #1			Origin
Thomas Edison's Secret Lab E/I (ION Television)			Network
Regular Schedule	Total Times Aired at Regularly Scheduled Time		
Fridays / 8:00 am and 8:30 am ET/PT or 7:00 am and 7:30 am CT/MT	26		
Length of Program	Age of Target Audience		
	From	To	
30 minutes	8	11	
Describe the educational and informational objective of the program and how it meets the definition of Core Programming			
Thomas Edison's Secret Lab presents accurate, age appropriate scientific principles and concepts by portraying appealing young role models with whom young viewers can easily identify, in clever, comedic and wildly visual science based problem situations. It explores in the context of can do enthusiasm that characterized Thomas Edison's life and experiences. It invites young viewers to join in the adventure of science by making it interesting, challenging, and fun.			

Title of Digital Core Program #2		Origin	
Secret Millionaire's Club E/I (ION Television)		Network	
Regular Schedule	Total Times Aired at Regularly Scheduled Time		
Fridays / 9:00 am and 9:30 am ET/PT or 8:00 am and 8:30 am CT/MT	26		
Length of Program		Age of Target Audience	
		From	To
30 minutes		8	12
Describe the educational and informational objective of the program and how it meets the definition of Core Programming			
Secret Millionaire's Club is a series that attracts and engages young viewers, between the ages of 8-12, as they follow the exciting and often comedic adventures of four attractive role models, in narratives designed to introduce children to basic concepts in business, financial literacy, and responsible money management, as well as important practical life lessons.			
Title of Digital Core Program #3		Origin	
Zoo Clues E/I (ION Television)		Network	
Regular Schedule	Total Times Aired at Regularly Scheduled Time		
Fridays / 8:00 am and 8:30 am ET/PT or 7:00 am and 7:30 am CT/MT	26		
Length of Program		Age of Target Audience	
		From	To
30 minutes		13	16
Describe the educational and informational objective of the program and how it meets the definition of Core Programming			
Zoo Clues is a 30 minute program specifically created for young people between the ages of 13 and 16. The program's presentation mix of narration, visuals, and very well chosen topics delivers education and information while it entertains. Zoo Clues will leave viewers with a meaningful perspective about animals and meaningful comparison to their own human characteristics. The show's clever narration links disparate information together in a way that always makes clear that what viewers see is real, natural, and relates to their own life in the real world.			



COMMERCIAL LIMITS AND WEBSITE RULES COMPLIANCE CERTIFICATION FOURTH QUARTER 2017

During the fourth quarter of 2017 (October 1, 2017 – December 31, 2017), the following Educational/Informational programs tailored to meet the requirements for teens 13 – 16 years old appeared on the LAFF Network. As a result of these programs originally being created for and directed at teens 13 and above, the rules (47 C.F.R. § 73.670) for commercial limits and websites do not apply.

E/I Programs (series)

Program: Jack Hanna's Animal Adventures (October 1, 2017 – December 31, 2017)
Time: Saturdays 10:00 AM - 10:30 AM ET
Duration: 30 minutes
Rating: TV-G E/I

Program: Jack Hanna's Animal Adventures (October 1, 2017 – December 31, 2017)
Time: Saturdays 10:30 AM - 11:00 AM ET
Duration: 30 minutes
Rating: TV-G E/I

Program: Outback Adventures With Tim Faulkner (October 1, 2017 – December 31, 2017)
Time: Saturdays 11:00 AM - 11:30 AM ET
Duration: 30 minutes
Rating: TV-G E/I

Program: Dog Town (October 1, 2017 – December 31, 2017)
Time: Saturdays 11:30 AM - 12:00 PM ET
Duration: 30 minutes
Rating: TV-G E/I

Program: Dog Town (October 1, 2017 – December 31, 2017)
Time: Saturdays 12:00 PM - 12:30 PM ET
Duration: 30 minutes
Rating: TV-G E/I

Program: Recipe Rehab (October 1, 2017 – December 31, 2017)
Time: Saturdays 12:30 PM - 1:00 PM ET
Duration: 30 minutes
Rating: TV-G E/I