

CHILDREN'S TV PROGRAMMING COMMERCIAL CERTIFICATION

[Place in Public File No Later Than the 9th day of Jan, Apr, Jul, Oct.]

This station certifies that all 12-and-under children's TV programs carried during this quarter on its analog and digital channels were formatted so that, as a matter of standard policy and practice, the programs would not exceed the "commercial matter" time limits of 76.670(a) of the FCC's rules:

Weekdays: 12 minutes in any clock-hour children's programming (6 minutes in a stand-alone half-hour program)

Weekends: 10.5 minutes in any clock-hour children's programming (5.25 minutes in a stand-alone half-hour program).

<u>Program Title</u>
<i>[List all network and non-network 12-and-under children's programs carried on analog and digital channels.]</i>
All E/I programs that air on this station have a target age range of 13 - 16 years of age.

1. Station certifies that there were not any time periods during the quarter in which the "commercial matter" time limits stated above were exceeded during 12-and-under children's programming.

 X
Yes No

If no, provide details of each such instance in an attachment.

2. Station certifies that, during the quarter, it has complied with the commercial requirements of 73.670(b), (c) & (d) of the FCC's rules regarding the display of Internet website addresses during 12-and-under children's programming, which requirements became effective January 2, 2007.

 X
Yes No

If no, provide details in an attachment.

I hereby state, under penalty or perjury, that the foregoing is true, correct and complete to the best of my knowledge, information and belief.

Jeanne Jaurville Bennett
Signature/Title of Authorized Station Employee *Jacal Sales Manager*

Date: 1/05/2017

[Attach any commercial certification or confirmation provided by network and program suppliers.]

4th Quarter 2016: CW Television Network Teen/Young Viewer Programming**MEMORANDUM**

To: General Managers, Program Directors, Program Managers

From: Affiliate Relations

Date: December 15, 2016

Subject: **4th Quarter 2016: CW Television Network Teen/Young Viewer Programming**

The CW Television Network Teen/Young Viewer Programming

Below is a list of 4th Quarter 2016 CW Teen/Young Viewer Programming for your public files.

Statement

This statement is designed to furnish you with additional information concerning the commercial matter contained in the network's teen/young viewer programs, and to enable you to more easily comply with the requirements of the Children's Television Act of 1990. The following is a list of all CW Television Network programs which were produced and broadcast with the intention of primarily reaching an audience of young viewers between thirteen and sixteen that were scheduled for broadcast during the fourth quarter of 2016.

4th QUARTER 2016 – CW TEEN/YOUNG VIEWER PROGRAMMING

Program: Calling Dr. Pol (E/I)

Rating: TV G
Length: 30 min

Program: Dinner Spinner Presented by Allrecipes

Rating: TV G
Length: 30 min

Program: Dog Whisperer with Cesar Millan: Family Edition (E/I)

Rating: TV G
Length: 30 min

Program: Vacation Creation

Rating: TV G
Length: 30 min

Program: Rescue Me with Dr. Lisa (E/I)

Rating: TV G
Length: 30 min

Program: Save Our Shelter

Rating: TV G
Length: 30 min

Program: Save To Win

Rating: TV G
Length: 30 min

Program: Unlikely Animal Friends
Rating: TV G
Length: 30 min

Click **HERE** (<http://www.cwtvlink.com/index.jsp?folder=381>) for show descriptions.



COMMERCIAL LIMITS AND WEBSITE RULES COMPLIANCE CERTIFICATION FOURTH QUARTER 2016

During the fourth quarter of 2016 (October 1, 2016 – December 31, 2016) the following Educational/ Informational programs tailored to meet the requirements for teens 13 – 16 years old appeared on the Grit Network. As a result of these programs originally being created for and directed at teens 13 and above, the rules (47 C.F.R. § 73.670) for commercial limits and websites do not apply.

E/I Programs (series)

Program: Jack Hanna's Wild Countdown (October 1, 2016 – December 31, 2016)

Time: Saturdays 10:00 AM - 10:30 AM ET

Duration: 30 minutes

Rating: TV-PG E/I

Program: Jack Hanna's Wild Countdown (October 1, 2016 – December 31, 2016)

Time: Saturdays 10:30 AM – 11:00 AM ET

Duration: 30 minutes

Rating: TV-PG E/I

Program: The Brady Barr Experience (October 1, 2016 – December 31, 2016)

Time: Saturdays 11:00 AM - 11:30 AM ET

Duration: 30 minutes

Rating: TV-G E/I

Program: Sea Rescue (October 1, 2016 – December 31, 2016)

Time: Saturdays 11:30 AM – 12:00 PM ET

Duration: 30 minutes

Rating: TV-PG E/I

Program: Sea Rescue (October 1, 2016 – December 31, 2016)

Time: Saturdays 12:00 PM – 12:30 PM ET

Duration: 30 minutes

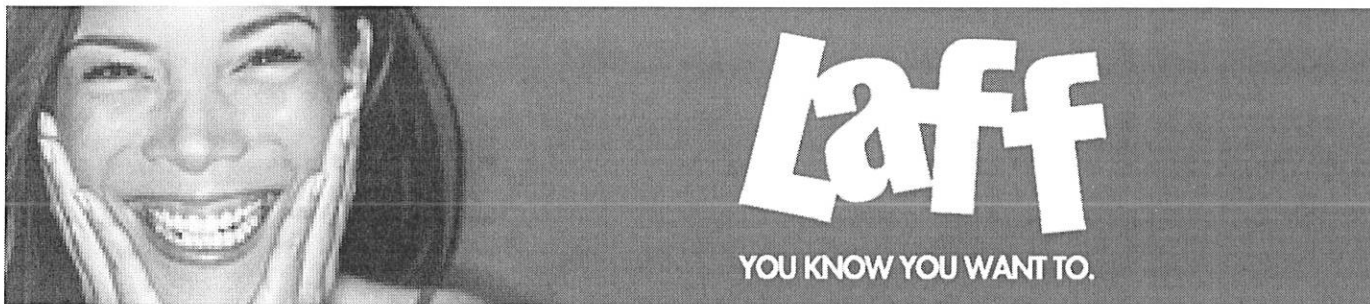
Rating: TV-PG E/I

Program: Rock The Park (October 1, 2016 – December 31, 2016)

Time: Saturdays 12:30 PM – 1:00 PM ET

Duration: 30 minutes

Rating: TV-PG E/I



COMMERCIAL LIMITS AND WEBSITE RULES COMPLIANCE CERTIFICATION FOURTH QUARTER 2016

During the fourth quarter of 2016 (October 1, 2016 – December 31, 2016) the following Educational/ Informational programs tailored to meet the requirements for teens 13 – 16 years old appeared on the LAFF Network. As a result of these programs originally being created for and directed at teens 13 and above, the rules (47 C.F.R. § 73.670) for commercial limits and websites do not apply.

E/I Programs (series)

Program: Jack Hanna's Animal Adventures (October 1, 2016 – December 31, 2016)
Time: Saturdays 10:00- 10:30 AM ET
Duration: 30 minutes
Rating: TV-G E/I

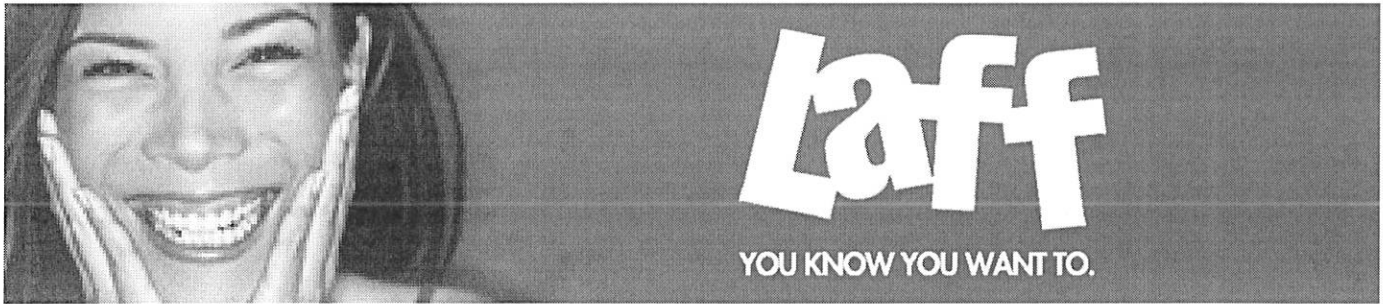
Program: Outback Adventures With Tim Faulkner (October 1, 2016 – December 31, 2016)
Time: Saturdays 10:30- 11:00 AM ET
Duration: 30 minutes
Rating: TV-G E/I

Program: Outback Adventures With Tim Faulkner (October 1, 2016 – December 31, 2016)
Time: Saturdays 11:00- 11:30 AM ET
Duration: 30 minutes
Rating: TV-G E/I

Program: Reluctantly Healthy (October 1, 2016 – December 31, 2016)
Time: Saturdays 11:30- 12:00 PM ET
Duration: 30 minutes
Rating: TV-PG E/I

Program: Food For Thought With Claire Thomas (October 1, 2016 – December 31, 2016)
Time: Saturdays 12:00- 12:30 PM ET
Duration: 30 minutes
Rating: TV-PG E/I

Program: Food For Thought With Claire Thomas (October 1, 2016 – December 31, 2016)
Time: Saturdays 12:30- 1:00 PM ET
Duration: 30 minutes
Rating: TV-PG E/I



COMMERCIAL LIMITS AND WEBSITE RULES COMPLIANCE CERTIFICATION FOURTH QUARTER 2016

During the fourth quarter of 2016 (October 1, 2016 – December 31, 2016) the following Educational/ Informational programs tailored to meet the requirements for teens 13 – 16 years old appeared on the LAFF Network. As a result of these programs originally being created for and directed at teens 13 and above, the rules (47 C.F.R. § 73.670) for commercial limits and websites do not apply.

E/I Programs (series)

Program: Jack Hanna's Animal Adventures (October 29, 2016 – November 12, 2016)
Time: Saturdays 1:00- 1:30 PM ET
Duration: 30 minutes
Rating: TV-G E/I

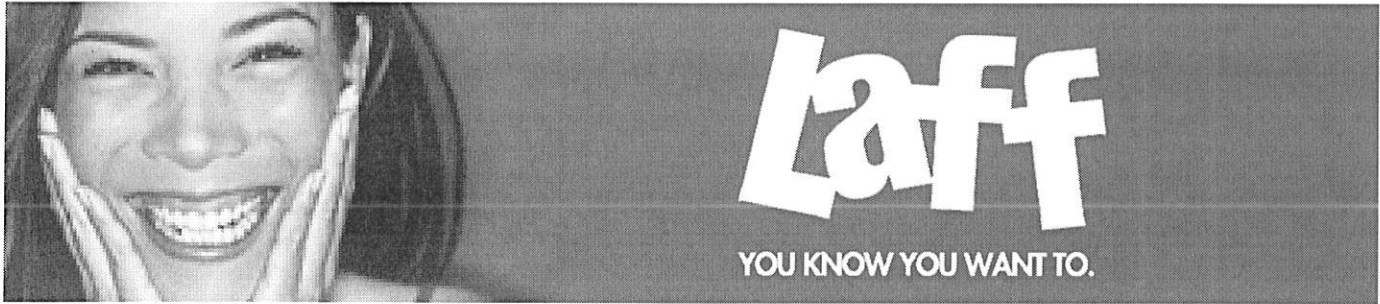
Program: Reluctantly Healthy (October 29, 2016 – November 19, 2016)
Time: Saturdays 2:00- 2:30 PM ET
Duration: 30 minutes
Rating: TV-PG E/I

Program: Food For Thought With Claire Thomas (October 29, 2016 – November 26, 2016)
Time: Saturdays 2:30- 3:00 PM ET
Duration: 30 minutes
Rating: TV-PG E/I

Program: Outback Adventures With Tim Faulkner (November 19, 2016)
Time: Saturday 1:00- 1:30 PM ET
Duration: 30 minutes
Rating: TV-G E/I

Program: Outback Adventures With Tim Faulkner (October 29, 2016 – November 26, 2016)
Time: Saturdays 1:30- 2:00 PM ET
Duration: 30 minutes
Rating: TV-G E/I

Program: Reluctantly Healthy (December 3, 2016)
Time: Saturday 1:00- 1:30 PM ET
Duration: 30 minutes
Rating: TV-PG E/I



COMMERCIAL LIMITS AND WEBSITE RULES COMPLIANCE CERTIFICATION FOURTH QUARTER 2016

During the fourth quarter of 2016 (October 1, 2016 – December 31, 2016) the following Educational/ Informational programs tailored to meet the requirements for teens 13 – 16 years old appeared on the LAFF Network. As a result of these programs originally being created for and directed at teens 13 and above, the rules (47 C.F.R. § 73.670) for commercial limits and websites do not apply.

E/I Programs (series)

Program: Food For Thought With Claire Thomas (November 26, 2016)
Time: Saturday 2:00- 2:30 PM ET
Duration: 30 minutes
Rating: TV-PG E/I

Program: Jack Hanna's Animal Adventures (December 3, 2016)
Time: Saturday 1:30- 2:00 PM ET
Duration: 30 minutes
Rating: TV-G E/I