



CERTIFICATION OF COMPLIANCE WITH STATUTORY LIMITS AND SECTION 73.670

(COMMERCIAL LIMITS IN CHILDREN'S PROGRAMS)

JANUARY 1, 2019 – MARCH 31, 2019

FOR THE PUBLIC FILE

In 1st Quarter 2019, WRTV (RTV6) broadcast programs primarily geared towards children that are ages 13-16. No programs broadcast during the 1st Quarter were primarily broadcast for children 12 and younger.

WRTV – ABC (6.1)

There were no programs designed for children twelve years old and younger scheduled for broadcast during this period.

WRTV – GRIT (6.2)

There were no programs designed for children twelve years old and younger scheduled for broadcast during this period.

WRTV – LAFF (6.3)

There were no programs designed for children twelve years old and younger scheduled for broadcast during this period.

WRTV – ESCAPE (6.4)

There were no programs designed for children twelve years old and younger scheduled for broadcast during this period.

Lana Durban Scott, VP & General Manager WRTV

Date:



LITTON'S WEEKEND ADVENTURE

COMMERCIAL LOAD AND WEB SITE REPORT

1st QUARTER 2019

THE FOLLOWING IS A LIST OF ALL LITTON'S WEEKEND ADVENTURE PROGRAMS PROVIDED TO ABC AFFILIATES DESIGNED TO MEET THE EDUCATIONAL/INFORMATIONAL REQUIREMENT FOR CHILDREN THIRTEEN TO SIXTEEN YEARS OLD DURING THE FIRST QUARTER OF 2019. BECAUSE THESE PROGRAMS ARE ORIGINALLY PRODUCED FOR AND DIRECTED AT CHILDREN THIRTEEN TO SIXTEEN YEARS OLD, NEITHER THE COMMERCIAL LIMITS NOR THE WEBSITE RULE APPLY (SEE 47 C.F.R. § 73.670 (Note 2)). THIS CERTIFIES THAT ALL OF THESE PROGRAMS WERE FORMATTED (IN THE ORDER AND AT THE TIMES INDICATED) WITH THE FOLLOWING COMMERCIAL LOADS.

Children's Weekend Programs (series)

1. Program: Jack Hanna's Wild Countdown
Duration: Half-hour
Number of Network Commercial Minutes: 8:00

2. Program: Ocean Treks with Jeff Corwin
Duration: Half-hour
Number of Network Commercial Minutes: 8:00

- 3. Program: Rescue Heroes
Duration: Half-hour
Number of Network Commercial Minutes: 8:00

- 4. Program: The Great Dr. Scott
Duration: Half-hour
Number of Network Commercial Minutes: 8:00

- 5. Program: Rock the Park
Duration: Half-hour
Number of Network Commercial Minutes: 8:00

- 6. Program: Vacation Creation
Duration: Half-hour
Number of Network Commercial Minutes: 8:00

Children's Weekend Specials

None

Children's Weekday Programs

None

Children's Weekday Specials

None

* * * * *

ALTHOUGH THESE PROGRAMS ARE NOT SUBJECT TO THE WEBSITE RULE BECAUSE THEY ARE PRODUCED FOR AND AIMED AT CHILDREN 13-16, NONETHELESS LITTON HAS ENDEAVORED TO COMPLY WITH THE RESTRICTION ON URLS DISPLAYED WITHIN SHOWS (SEE SECTIONS 73.670(b), (c) AND (d) OF THE RULES OF THE FEDERAL COMMUNICATIONS COMMISSION, 47 C.F.R. § 73.670(b), (c) AND (d)).

NONE OF THESE PROGRAMS CONTAINED ANY URLS, WITH THE POSSIBLE EXCEPTION OF (a) FICTIONAL URLS IN PROGRAMMING, (b) URLS OF COMMERCIAL-FREE WEBSITES THAT SATISFY 47 C.F.R. § 73.670(b), OR (c) URLS, NOT UNDER THE CONTROL OF THE LICENSEE, OF NON-PROFIT OR GOVERNMENT ENTITIES WITHIN PUBLIC SERVICE ANNOUNCEMENTS AIRED ON BEHALF OF THOSE ENTITIES, OR MEDIA COMPANIES IN PARTNERSHIP WITH THOSE ENTITIES.

Litton Entertainment
March 2019



COMMERCIAL LIMITS AND WEBSITE RULES COMPLIANCE CERTIFICATION FIRST QUARTER 2019

During the first quarter of 2019 (January 1, 2019 – March 31, 2019), the following Educational/Informational programs tailored to meet the requirements for teens 13 – 16 years old appeared on the Grit Network. As a result of these programs originally being created for and directed at teens 13 and above, the rules (47 C.F.R. § 73.670) for commercial limits and websites do not apply.

E/I Programs (series)

Program: Jack Hanna's Wild Countdown (January 1, 2019 – March 31, 2019)

Time: Saturdays 10:00 AM - 10:30 AM ET

Duration: 30 minutes

Rating: TV-PG E/I

Program: Jack Hanna's Wild Countdown (January 1, 2019 – March 31, 2019)

Time: Saturdays 10:30 AM – 11:00 AM ET

Duration: 30 minutes

Rating: TV-PG E/I

Program: Ocean Treks With Jeff Corwin (January 1, 2019 – March 31, 2019)

Time: Saturdays 11:00 AM - 11:30 AM ET

Duration: 30 minutes

Rating: TV-G E/I

Program: Sea Rescue (January 1, 2019 – March 31, 2019)

Time: Saturdays 11:30 AM – 12:00 PM ET

Duration: 30 minutes

Rating: TV-PG E/I

Program: Sea Rescue (January 1, 2019 – March 31, 2019)

Time: Saturdays 12:00 PM – 12:30 PM ET

Duration: 30 minutes

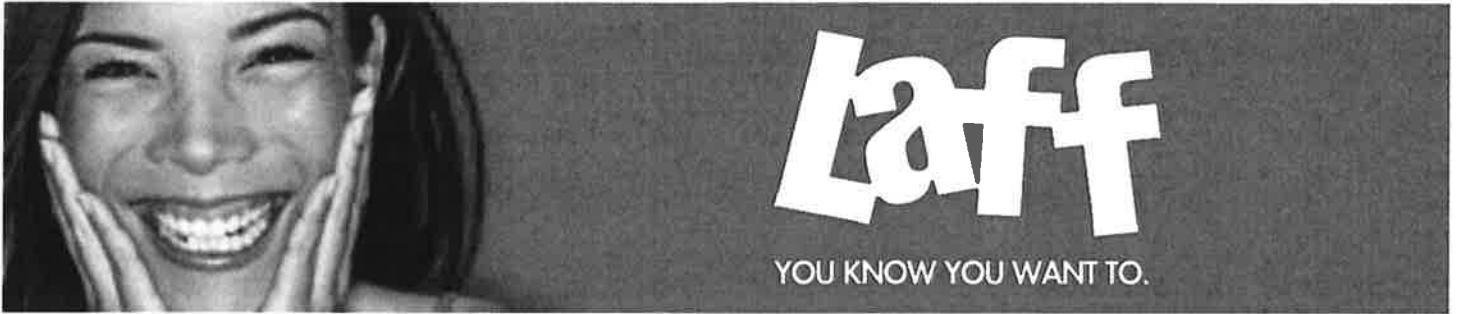
Rating: TV-PG E/I

Program: Rock The Park (January 1, 2019 – March 31, 2019)

Time: Saturdays 12:30 PM – 1:00 PM ET

Duration: 30 minutes

Rating: TV-PG E/I



COMMERCIAL LIMITS AND WEBSITE RULES COMPLIANCE CERTIFICATION FIRST QUARTER 2019

During the first quarter of 2019 (January 1, 2019 – March 31, 2019), the following Educational/Informational programs tailored to meet the requirements for teens 13 – 16 years old appeared on the LAFF Network. As a result of these programs originally being created for and directed at teens 13 and above, the rules (47 C.F.R. § 73.670) for commercial limits and websites do not apply.

E/I Programs (series)

Program: *Jack Hanna's Animal Adventures* (January 1, 2019 – March 31, 2019)

Time: Saturdays 10:00 AM - 10:30 AM ET

Duration: 30 minutes

Rating: TV-G E/I

Program: *Jack Hanna's Animal Adventures* (January 1, 2019 – March 31, 2019)

Time: Saturdays 10:30 AM - 11:00 AM ET

Duration: 30 minutes

Rating: TV-G E/I

Program: *Recipe Rehab* (January 1, 2019 – March 31, 2019)

Time: Saturdays 11:00 AM - 11:30 AM ET

Duration: 30 minutes

Rating: TV-G E/I

Program: *Recipe Rehab* (January 1, 2019 – March 31, 2019)

Time: Saturdays 11:30 AM - 12:00 PM ET

Duration: 30 minutes

Rating: TV-G E/I

Program: *Henry Ford's Innovation Nation* (January 1, 2019 – March 31, 2019)

Time: Saturdays 12:00 PM - 12:30 PM ET

Duration: 30 minutes

Rating: TV-G E/I

Program: *Henry Ford's Innovation Nation* (January 1, 2019 – March 31, 2019)

Time: Saturdays 12:30 PM - 1:00 PM ET

Duration: 30 minutes

Rating: TV-G E/I



ESCAPE

slip away.

COMMERCIAL LIMITS AND WEBSITE RULES COMPLIANCE CERTIFICATION FIRST QUARTER 2019

During the first quarter of 2019 (January 1, 2019 – March 31, 2019), the following Educational/Informational programs tailored to meet the requirements for teens 13 – 16 years old appeared on the Escape Network. As a result of these programs originally being created for and directed at teens 13 and above, the rules (47 C.F.R. § 73.670) for commercial limits and websites do not apply.

E/I Programs (series)

Program: *Missing* (January 1, 2019 – March 31, 2019)
Time: Saturdays 10:00 AM - 10:30 AM ET
Duration: 30 minutes
Rating: TV-PG E/I

Program: *Better Planet* (January 1, 2019 – March 31, 2019)
Time: Saturdays 10:30 AM - 11:00 AM ET
Duration: 30 minutes
Rating: TV-G E/I

Program: *Better Planet* (January 1, 2019 – March 31, 2019)
Time: Saturdays 11:00 AM - 11:30 AM ET
Duration: 30 minutes
Rating: TV-G E/I

Program: *Walking Wild* (January 1, 2019 – March 31, 2019)
Time: Saturdays 11:30 AM - 12:00 PM ET
Duration: 30 minutes
Rating: TV-G E/I

Program: *Wild Wonders* (January 1, 2019 – March 31, 2019)
Time: Saturdays 12:00 PM - 12:30 PM ET
Duration: 30 minutes
Rating: TV-G E/I

Program: *Missing* (January 1, 2019 – March 31, 2019)
Time: Saturdays 12:30 PM – 1:00 PM ET
Duration: 30 minutes
Rating: TV-PG E/I