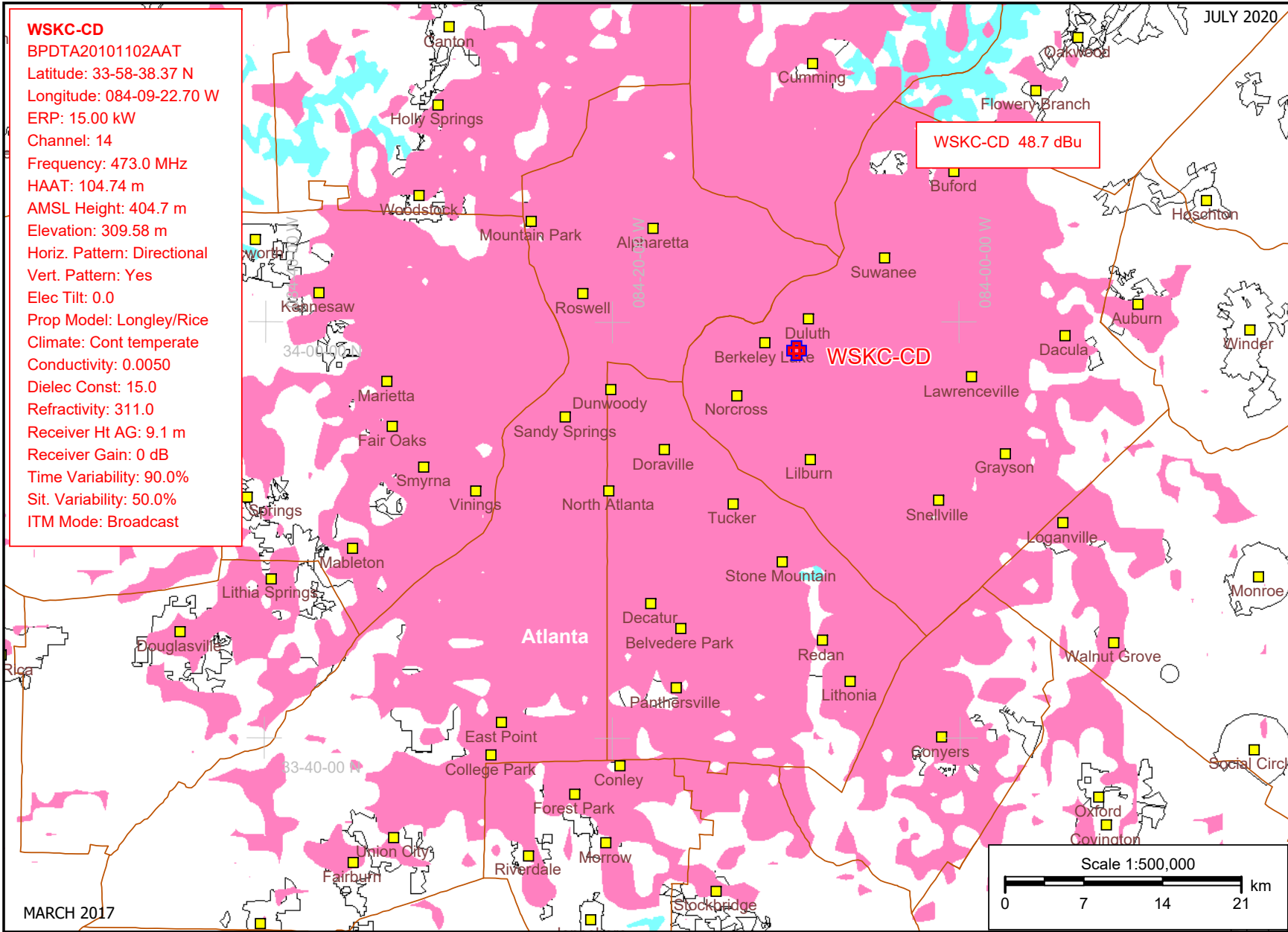


SMITH KHANNA & GULL, Inc. - Consulting Engineers

JULY 2020

WSKC-CD
 BPDTA20101102AAT
 Latitude: 33-58-38.37 N
 Longitude: 084-09-22.70 W
 ERP: 15.00 kW
 Channel: 14
 Frequency: 473.0 MHz
 HAAT: 104.74 m
 AMSL Height: 404.7 m
 Elevation: 309.58 m
 Horiz. Pattern: Directional
 Vert. Pattern: Yes
 Elec Tilt: 0.0
 Prop Model: Longley/Rice
 Climate: Cont temperate
 Conductivity: 0.0050
 Dielec Const: 15.0
 Refractivity: 311.0
 Receiver Ht AG: 9.1 m
 Receiver Gain: 0 dB
 Time Variability: 90.0%
 Sit. Variability: 50.0%
 ITM Mode: Broadcast



MARCH 2017

BASED ON LONGLEY-RICE METHOD COMPUTED NOISE LIMITED SIGNAL LEVEL (48.7 dBu) FOR DIGITAL CHANNEL 14 OPERATION OF WSKC-CD