

WEEF 1430 AM & 99.1 FM

3rd QUARTER TOP TEN ISSUES REPORT FOR 2022

1. **ECONOMY** (Coronavirus, unemployment, cost of living, credit)
2. **HEALTH CARE** (Covid-19, vaccine, insurance coverage, cancer, hospital safety)
3. **PUBLIC SAFETY** (Ukraine War, Covid social distress, crime, environmental hazards)
4. **EDUCATION** (school openings, in home education)
5. **GOVERNMENT** (taxes, federal/state reforms, election concerns, women's rights)
6. **IMMIGRATION** (citizenship, deportation, borders, discrimination)
7. **AGING** (home care safety for elderly, social security, retirement plans)
8. **ENVIROMENT** (pollution, recycling, changing climate, traffic)
9. **TECHNOLOGIES** (privacy issues, cybercrime, costs of being connected)
10. **ARTS/CULTURE** (tolerance. issues, maintaining heritage beliefs, cost of arts)

The above list was compiled by the following methods. Views, opinions by brokers, producers. Letters, Calls and emails from listeners. Staff and management analyst. Local and national news media as well As social media.

This quarter of 2022 saw the opposition of the Supreme Court overruled Roe vs. Wade. Hurricane Ian tore through the Southeast with great fury. The Ukrainian War seemed to escalate with aggressive maneuverings by Putin. The mid-term elections have also become a battlefield between the two parties, which is really no surprise. The world mourned the passing of England's Queen Elizabeth the II.

Woes of inflation, inconsistency of the supply chain of essential products. The violent crimes in and around the city are and have been a major concern. Locally the Bears moving to Arlington Heights seems more and more like an actuality for the future.

Polnet feels that the importance of localized programming communicates all the issues mentioned above a local understanding for the benefit of the listener.

Media Tracks located in Des Plaines produces 2 localized programs (RADIO HEALTH JOURNAL and VIEWPOINTS). Both shows are syndicated nationwide and are nationally popular. But being based local, many guests are from local areas and information is of particular interest to this area. While these 2 programs not only fulfill the public issues needs for this period, the programs are of local origin and each program has multiple subjects being covered, just makes this an essential informative source to all our listeners.

Polnet is proud that all programming that originates from our Northbrook facility is locally based in the Chicagoland area. The Chicago Greek Hours as heard on WEEF based out of Morton Grove. K-Radio", the popular long running Korean program on WKTA is in Prospect Heights. The Entertaining and informative multiple Russian programming that airs on WKTA all originate in areas of Northbrook/Wheeling locations.

All these programs produce live news/community programming daily. Our brokers have the ability to inform of events and happenings in the home language of their broadcast. This is one of the reasons why free broadcast local radio is an essential broadcast tool to our specialized listening audience. Many of our producers have web streaming, publications, and direct phone lines so listeners can connect multiple ways with their news source.

Local community institutions still provide many free services and events which we provide information to our audience in a public service announcement form. Sources such as the Northbrook Public Library provide many seminar types of services open to the public as well as the Lake County Health Department will on occasion have free health screenings on various concerns such as high blood pressure and diabetes.

Polnet is always looking to bring the best quality of sound and information to its listeners. Therefore, we encourage listeners to communicate back to us so we can be more informed of their interest, thoughts and concerns, as well as events. Communication is key to our business and to our listeners.

POLNET NORTHBROOK PRODUCER PUBLIC AFFAIR PROGRAMMING
WKTA PRODUCER BROADCAST PUBLIC AFFAIR

K-RADIO (9am-5pm M-F)

Broadcasts Mon-Fri appx 120 minutes of news and talk which covers local and international interest. Topics of economy, immigration, terrorism, health care, education, cultural and international affairs and are discussed daily and at times bilingually to broaden the understanding of the information that is being delivered. Programming is live and can prepare listeners of local alerts such as bad weather, traffic issues and amber alerts.

RUSSIAN PROGRAM "PrimeTime" (7am-9am and 5pm-7pm)

Broadcast 5 days a week days a week. This program dedicates a good portion daily of it's programming to news, politics and community interests. In the near future, WEEF will be able to present a roll sheet of topics and contacts of this program with the assistance of the producer

LA MEGA (VARIOUS TIMES)

In house production featuring Spanish music, News, Community interest of the greater Gurnee Lake County Area. Airs up to date, real time happenings that are concerns of the Hispanic area such as Immigration support and Corona Virus updates such as where testing is being held and where supplies are available. Interviews with community leaders where listeners can obtain support as to food pantries and employment opportunities.

WEEF PRODUCER BROADCAST PUBLIC AFFAIR

.CHICAGO GREEK HOURS – M – F 7:00am to Noon

This morning daily broadcast appx of 60 minutes of news and additional 30 minutes of community and PSA content which covers local and international interest. Topics of economy, immigration, terrorism, health care, education, cultural and international affairs and are discussed on a daily basis. Host Sam Rekoumis has been on the scene since the 80's when he took over the helm of producing duties from George Kafolapoulis. He also publishes a monthly paper with news of all interest.

36.6 - This Russian Health/Medical program is produced by Dr. E. Koles and airs on Saturdays from IOAM to 1PM.

LA MEGA (VARIOUS TIMES)

In house production featuring Spanish music, News, Community interest of the greater Gurnee Lake County Area. Airs up to date, real time happenings that are concerns of the Hispanic area such as Immigration support and Corona Virus updates such as where testing is being held and where supplies are available. Interviews with community leaders where listeners can obtain support as to food pantries and employment opportunities.

WPJX PRODUCER BROADCAST PUBLIC AFFAIR

REBEL RADIO 24/7 programming on WPJX participate in many local charity fundraisers and activities. A regular standard of daily PSA's air on this Heavy Metal program. Every Sunday WPJX airs MEDIA TRACKS programming that is locally produced in Des Plaines. Media Tracks provides 2 programs (RADIO HEALTH JOURNAL and VIEWPOINTS. Both shows are syndicated nationwide and are extremely popular coast to coast. But being locally based, many guests on the programs are from local areas and information is of particular interest to the community of the program's listenership.

WEEF, WKTA AND WPJX also when availability offers, will broadcast up to a minute of PSA product from the AD COUNCIL, IBA and other national and local non-for profits that have importance to the listening community. All stations airs Media Track's Radio Health Journal and Viewpoint

RADIO HEALTH JOURNAL



The Latest In Health, Science & Technology

WEEF SUN 6:00am

WKTA MON 4:30am

WPJX SUN 7:00am

AboutRHJ

Radio Health Journal is an award-winning, contemporary radio magazine focusing on the latest in health, science, and technology. Featuring interviews with renowned medical experts, doctors, scientists, and professors, *Radio Health Journal* has a 25+ year track record of providing you with information you can trust. *Radio Health Journal* is currently airing on over 525 radio stations and available on your favorite podcast platform.

Meet the hosts

Nancy Benson was one of the founding hosts of *Radio Health Journal* when the program debuted in 1992. A former news reporter/anchor for WMAQ radio in Chicago, she has won numerous awards for reporting. Since joining the faculty of the University of Illinois, where she is Professor of Journalism, Benson has also become heavily involved in training journalists internationally. Previously, she worked in Rome as a public affairs consultant with the United Nations World Food Program.

Shel Lustig began his career in informational radio programming at Chicago's NPR affiliate, WBEZ, where he was a longtime host and producer of news magazine programs. At the PIA Radio Network, he produced Health Care and PIA Public Affairs before co-founding MediaTracks Communications, producer of *Radio Health Journal*. Lustig has won awards from organizations as varied as the Corporation for Public Broadcasting, the Education Writers Association and the International Radio Festival of New York.

Meet the producer

Reed PenceReed has been reporting on medicine since 1983, when he became host/producer of the Associated Press Radio Network's daily health feature. He later joined the PIA Radio Network as a producer of its programs Health Care and PIA Public Affairs. Since 1992, Pence has been host and lead producer of *Radio Health Journal*. He is a winner of numerous national and regional media awards from groups such as the Chicago Headline Club/Society of Professional Journalists, the Board of Directors of National Breast Cancer Awareness Month, MADD, and the National Hearing Conservation Association. Pence is a Kappa Tau Alpha honors graduate of the Medill School of Journalism at Northwestern University.

Quarterly Report of Compliancy Issues & Programs List 2022-Q3 (July - September) Radio Health Journal

- Air Pollution
- Annual Checkups
- Areola Restoration
- Athletics
- Autoimmune Diseases
- Autopsy
- Body Dysmorphia
- Breast Cancer
- Cancer
- Cancer Survivors
- Cancer Treatment
- Cardio-oncology
- Cardiology
- Chemotherapy
- Child Psychology
- Child Safety
- Childhood Vaccinations
- Children and Youth at Risk
- Colon Cancer
- Colorectal Cancer
- Compassion
- Consumerism
- Covid-19 Pandemic
- Cremation
- Criminal Justice System
- Crisis
- Death
- Diet and Nutrition
- Discrimination
- Drinking Water Safety
- Drones
- Eating Disorders
- Economy
- Education
- Emergency Preparedness
- Emergency Services
- Emotion
- Emotional Intelligence
- Empathy
- Environment
- Ergonomics
- Esports
- Ethics
- Evolution
- Experimental Medication
- False Information
- Family Issues
- Fatal Heart Disease
- FDA Regulations
- Federal and State Government
- Federal Government
- Federal Regulations
- First Responders
- Food Safety
- Funerals
- Gamer Health
- Gaming
- Gender Issues
- Generic Drugs
- Genetic Diseases
- Genetics
- Genocide
- Health Care
- Health Screenings
- HIV/AIDS
- Homelessness
- Hospital Stays
- Human Genetics
- Infectious Disease
- Injury Risk
- Interpersonal Relationships
- Local Government
- Long-term Trauma
- Mandela Effect
- Mass Tragedy
- Mastectomy
- Medical Tattooing
- Medication
- Memory
- Mental Health
- Mental Health Awareness
- Mental Illness
- Mercury Poisoning
- Microplastic
- Military and War
- Mining
- Molecular Testing
- Monkeypox
- Multidisciplinary Care
- Nanotechnology
- Neurology
- Neuroscience
- Oncology
- Osteopathic Medicine
- Parenting
- Patient Safety
- Pharmaceutical Industry
- Plastic
- Polio
- Pollution
- Post Traumatic Stress Disorder
- Posture
- Precision Medicine
- Prescription Medication
- Prevention
- Private Security
- Psychic Numbing
- Psychology
- Public Health
- Public Safety
- Public Security
- Radiation
- Rare Conditions
- Rare Diseases & Research
- Relationships
- Rheumatoid Arthritis
- Robots
- Safe Sleeping
- Scar Therapy
- Sex Education
- SIDS
- Skin Cancer
- Social Media
- Sports and Society
- State and Federal Regulations
- State Government
- State Legislation
- Suicide
- Surveillance
- Technology
- Theragnostics
- Trade Secrets
- Trauma
- Trial and Error Medicine
- Unclaimed Bodies
- Vaccination
- Video Games
- Vulnerable populations
- Waste Disposal and Landfills
- Water Pollution

Program 22-27

Air Week: 7/3/2022

Executive Producer: Amirah Zaveri

Production Manager: Jason Dickey

SEGMENT 1: ORPHAN DISEASE RESEARCH: OVERCOMING YEARS OF INDUSTRYWIDE NEGLECT

Time: 1:50

Duration: 12:30

Synopsis: Doctors diagnosed Patrick Girondi's son with thalassemia in 1992, declaring he'd die by age 14. Like most other rare conditions, treatments for thalassemia were slim to none. Dr. Stanley Nelson explains how orphan disease research has progressed in the last few decades and why a cure isn't always the goal.

Host: Reed Pence

Producer: Kristen Farrah

Guests: Dr. Stanley Nelson, Professor of Human Genetics, UCLA, Director of the California Center for Rare Diseases, UCLA; Patrick Girondi, Author of Flight of the Rondone, Founder, San Rocco Therapeutics

Compliance issues: Rare Diseases, Vulnerable populations, Genetic Diseases, Public Health, State and Federal Regulations, Experimental Medication, Consumerism, Human Genetics, Pharmaceutical Industry, FDA Regulations, Rare Disease Research, Genetics

Links for more info:

PatGirondi.com

[Pat G And Orphan's Dream – Facebook Page](#)

[Flight of the Rondone – Skyhorse Publishing](#)

[Stanley F. Nelson – David Geffen School of Medicine – Los Angeles, CA](#)

[California Center for Rare Diseases at UCLA](#)

SEGMENT 2: HOW JUST ONE NIGHT IN A HOSPITAL CAN CAUSE YEARS OF TRAUMA

Time: 15:22

Duration: 7:11

Synopsis: Research has shown that hospitalized adolescents can walk away physically healthy, but years later, are still dealing with symptoms of post-traumatic stress from their experience. Dr. Justin Kenardy discusses the signs of post-traumatic stress and preventive measures both parents and medical professionals can utilize.

Host: Nancy Benson

Producer: Kristen Farrah

Guests: Dr. Justin Kenardy, Professor Emeritus, School of Psychology, University of Queensland

Compliance issues: Patient Safety, Long-term Trauma, Children and Youth at Risk, Hospital Stays, Mental Health, Post Traumatic Stress Disorder

Links for more info:

[Emeritus Professor Justin Kenardy – University of Queensland Researchers](#)

[Preventative early intervention for children and adolescents exposed to trauma – University of Queensland eSpace](#)

[The Course of Posttraumatic Stress in Children: Examination of Symptom Trajectories and Predictive Factors Following Admission to Pediatric Intensive Care – Pediatric Critical Care Medicine](#)

Program 22-28

Air Week: 7/10/2022

Executive Producer: Amirah Zaveri

Production Manager: Jason Dickey

SEGMENT 1: HOW CLICKBAIT HEADLINES GAVE FALSE HOPE TO SIDS FAMILIES

Time: 1:51

Duration: 13:03

Synopsis: Sudden Infant Death Syndrome has baffled the scientific community for years. What causes the condition is still unknown, though media headlines for a recent SIDS study would make you think differently. Dr. Fern Hauck explains the confusion and where SIDS research stands today.

Host: Reed Pence

Producer: Kristen Farrah

Guests: Dr. Fern Hauck, SIDS Researcher, Professor of Family Medicine and Public Health Sciences, University of Virginia; Nadine Freedline, Mother

Compliance issues: Public Health, Health Care, Parenting, Family Issues, Safe Sleeping, Child Safety, SIDS, Public Safety, Children and Youth at Risk

Links for more info:

[Fern R Hauck, MD - Family Medicine](#)

[Infant Loss Resources](#)

[Safe Sleep](#)

SEGMENT 2: HOW HAS COVID-19 SHAPED THE PUBLIC RESPONSE TO MONKEYPOX?

Time: 15:56

Duration: 6:59

Synopsis: An outbreak of monkeypox, a viral disease, has popped up in numerous countries around the world. Public health agencies have issued safety recommendations, but with growing mistrust in these institutions, will anyone heed the advice? An expert discusses how the pandemic helped foster this rocky relationship.

Host: Nancy Benson

Producer: Grace Galante

Guests: Dr. William Schaffner, Professor of Preventive Medicine and Infectious Diseases, Vanderbilt University Medical Center

Compliance issues: Health Care, Infectious Disease, Emergency Preparedness, Monkeypox, Vaccination, Public Safety, Covid-19 Pandemic, State and Federal Regulations, Public Health

Links for more info:

[William Schaffner, MD | Department of Health Policy](#)

[2022 Monkeypox Response - CDC](#)

Program 22-29

Air Week: 7/17/2022

Executive Producer: Amirah Zaveri

Production Manager: Jason Dickey

SEGMENT 1: FOREVER SMALL: MUSCLE DYSMORPHIA'S PLACE IN BODYBUILDING CULTURE

Time: 1:50

Duration: 11:35

Synopsis: Bodybuilding is a sport that requires athletes to constantly monitor their physiques. This fixation can often develop into a subtype of body dysmorphic disorder called muscle dysmorphia. Dr. Roberto Olivardia explains how the condition fits into the culture of bodybuilding.

Host: Reed Pence

Producer: Kristen Farrah

Guests: Roberto Olivardia, Lecturer, Department of Psychiatry, Harvard Medical School, Clinical Psychologist, McLean Hospital

Compliance issues: Mental Illness, Public Health, Eating Disorders, Mental Health, Social Media, Consumerism, Sports and Society, Diet and Nutrition, Body Dysmorphia, Public Safety

Links for more info:

[Roberto Olivardia | Harvard Catalyst Profiles](#)

[Health: An interdisciplinary Journal for the Social Study of Health, Illness and Medicine](#)

Program 22-29

Air Week: 7/17/2022

Executive Producer: Amirah Zaveri

Production Manager: Jason Dickey

SEGMENT 2: WHY ARE MEN SKIPPING THEIR ANNUAL CHECKUPS?

Time: 14:26

Duration: 8:15

Synopsis: A recent survey by Orlando Health finds that many men overestimate how healthy they are, prompting one-third of them to skip their annual health screening. Dr. Thomas Kelley addresses common fears that keep men away from the doctor's office, and why annual checkups are crucial to overall health management.

Host: Nancy Benson

Producer: Kristen Farrah

Guests: Dr. Thomas Kelley, Family Medicine Physician, Orlando Health Physician Associates; Dexter Grant, male patient

Compliance issues: Public Safety, Health Screenings, Public Health, Health Care, Patient Safety, Prevention, Gender Issues, Annual Checkups

Links for more info:

[Thomas R. Kelley, MD - Family Medicine](#)

Program 22-30

Air Week: 7/24/2022

Executive Producer: Amirah Zaveri

Production Manager: Jason Dickey

SEGMENT 1: "IT'S LIKE LOSING A BODY PART": WHY ALOPECIA IS MORE THAN JUST HAIR LOSS

Time: 1:49

Duration: 12:09

Synopsis: Alopecia is an autoimmune disease that can lead to a partial or complete loss of hair. While the condition appears to be purely cosmetic, we speak with one patient, Deirdre Nero, about how it can lead to a plethora of physical problems and can greatly affect daily life. Dr. Brett King, a dermatologist at Yale University, explains how one new FDA-approved treatment is the first systemic therapy for severe alopecia.

Host: Reed Pence

Producer: Kristen Farrah

Guests: Dr. Brett King, Associate Professor of Dermatology, Yale University; Deirdre Nero, Secretary of the Board of Directors, National Alopecia Areata Foundation, Alopecia Patient

Compliance issues: Vulnerable populations, Health Care, Medication, Autoimmune Diseases

Links for more info:

[Brett King, MD, PhD](#)

[Deirdre Nero \(@ddnero\) • Instagram photos and videos](#)

[Deirdre Nero Fundraising Page](#)

[National Alopecia Areata Foundation](#)

SEGMENT 2: ENDING THE EPIDEMIC: LIFE-SAVING TREATMENT FOR HIV

Time: 15:00

Duration: 7:37

Synopsis: For many years, an HIV diagnosis was thought to be a death sentence. Although this is no longer the case, many affected individuals still face barriers to receiving treatment. Dr. Timothy Harrison, a deputy director at the U.S. Department of Health and Human Services, explains the still-persistent social stigma and how government entities are increasing access to HIV care.

Host: Nancy Benson

Producer: Grace Galante

Guests: Dr. Timothy Harrison, Deputy Director of Strategic Initiatives, U.S. Department of Health and Human Services, Senior Policy Advisor, U.S. Department of Health and Human Services; Joey Garcia, HIV Peer Support Specialist, Ashwell Sexual Health + Wellness, Austin, TX

Compliance issues: Local Government, Prevention, Infectious Disease, Public Safety, Sex Education, Public Health, Federal and State Government, Health Care, HIV/AIDS, Vulnerable populations, Discrimination

Links for more info:

[A Personal Perspective from Dr. Timothy Harrison | HIV.gov](#)

[I am a Work of ART | HIV.gov](#)

Program 22-31

Air Week: 7/31/2022

Executive Producer: Amirah Zaveri

Production Manager: Jason Dickey

SEGMENT 1: STRANGER THAN FICTION: USING ELECTRONIC TATTOOS TO MONITOR HEALTH

Time: 1:50

Duration: 11:50

Synopsis: Scientists are bringing temporary tattoos into the medical realm using nanotechnology. Electronic tattoos are patches placed on a patient's skin that will be able to both monitor and treat their specific condition. Dr. Aaron Franklin discusses how this technology will revolutionize patient care.

Host: Reed Pence

Producer: Kristen Farrah

Guests: Dr. Aaron Franklin, Professor of Electrical and Computer Engineering, Duke University; Dr. Roozbeh Jafari, Professor of Biomedical Engineering, Texas A&M University

Compliance issues: Patient Safety, Technology, Theragnostics, Consumerism, Nanotechnology, Health Care

Links for more info:

[Aaron D. Franklin | Duke Electrical and Computer Engineering Franklin Group](#)

[Roozbeh Jafari – Embedded Signal Processing Laboratory](#)

[Continuous cuffless monitoring of arterial blood pressure via graphene bioimpedance tattoos | Nature Nanotechnology](#)

SEGMENT 2: WHY BEATING CANCER DOESN'T MEAN THE BATTLE'S OVER

Time: 14:41

Duration: 7:47

Synopsis: Cancer treatments like radiation or chemotherapy elevate a patient's risk of fatal heart disease, even decades after beating the cancer itself. Fortunately, a new medical discipline called cardio-oncology is working to reduce this heart damage in cancer patients. An expert explains how this new role fits into cancer care.

Host: Nancy Benson

Producer: Grace Galante

Guests: Dr. Chris Fine, FACC Cardio-Oncologist, National Jewish Health and Intermountain Healthcare

Compliance issues: Cardiology, Chemotherapy, Cardio-oncology, Patient Safety, Oncology, Cancer, Multidisciplinary Care, Radiation, Fatal Heart Disease

Links for more info:

[Chris Fine, MD, FACC](#)

[Dr Chris Fine \(@DrChrisFine2\) / Twitter](#)

[Cardio-Oncology](#)

Program 22-32

Air Week: 8/7/2022

Executive Producer: Amirah Zaveri

Production Manager: Jason Dickey

SEGMENT 1: HOW MERCURY'S INVADING OUR AIR, WATER AND FOOD

Time: 1:50

Duration: 11:20

Synopsis: It's no secret mercury can harm our health, so why are dangerous exposures still prevalent? Well, it might be due to the unexpected contacts many people don't know about. Dr. Charles Driscoll explains how mercury's invaded all parts of our lives, and the government's erratic policies surrounding the element.

Host: Reed Pence

Producer: Grace Galante

Guests: Dr. Charles Driscoll, Professor in the Department of Civil and Environmental Engineering, Syracuse University; Dr. Michael Gochfeld, Professor Emeritus of Biomedical and Health Sciences, Rutgers University

Compliance issues: Food Safety, Vulnerable populations, Air Pollution, Skin Cancer, Environment, Federal Regulations, Public Health, Mining, Water Pollution, Federal Government, Mercury Poisoning

Links for more info:

[Charles T. Driscoll - ECS – Syracuse University](#)

[Charles Driscoll \(@ctdrisco\) / Twitter](#)

[Michael Gochfeld M.D., Ph.D. EOHSI Directory](#)

SEGMENT 2: MIND OVER MATTER: HOW SCIENCE IS UTILIZING THE PLACEBO EFFECT

Time: 14:12

Duration: 8:21

Synopsis: Though the placebo effect has been the downfall of much research, one scientist aims to change that. Dr. Emiliano Santarnecchi hopes to use it as a supplemental therapy to medicinal treatments. He discusses the potential applications, as well as the ethical dilemma behind this idea.

Host: Nancy Benson

Producer: Grace Galante

Guests: Dr. Emiliano Santarnecchi, Associate Professor of Radiology, Harvard Medical School, Research Director, Massachusetts General Hospital

Compliance issues: Health Care, Psychology, Neuroscience, Patient Safety, Ethics, Consumerism

Links for more info:

[Emiliano Santarnecchi | Mind Brain Behavior Interfaculty Initiative | Harvard University](#)

[Emiliano Santarnecchi \(@ESantarnecchi\) / Twitter](#)

Program 22-33

Air Week: 8/14/2022

Executive Producer: Amirah Zaveri

Production Manager: Jason Dickey

SEGMENT 1: WHAT YOU SHOULD KNOW ABOUT INGESTING MICROPLASTICS

Time: 1:50

Duration: 11:54

Synopsis: When broken down, plastic products create tiny particles called microplastics. These nearly invisible specks seep into our water, air, and have recently been found inside our bodies. Experts discuss how we ingest microplastics, and what potential effects they may have on our health.

Host: Reed Pence

Producer: Kristen Farrah

Guests: Dr. Phoebe Stapleton, Assistant Professor, Department of Pharmacology and Toxicology, Rutgers University; Dr. Laura Sadofsky, Senior Lecturer, Respiratory Medicine, Hull York Medical School

Compliance issues: Pollution, Water Pollution, Environment, Public Safety, Public Health, Food Safety, Microplastic, Consumerism, Drinking Water Safety, Plastic, Air Pollution

Links for more info:

[Laura Sadofsky | Hull York Medical School](#)

[Laura Sadofsky \(@LauraSadofsky\) / Twitter](#)

[Stapleton, Phoebe - Ernest Mario School of Pharmacy](#)

[Detection of microplastics in human lung tissue using \$\mu\$ FTIR spectroscopy - ScienceDirect](#)

[Nanopolystyrene translocation and fetal deposition after acute lung exposure during late-stage pregnancy | Particle and Fibre Toxicology](#)

SEGMENT 2: FIRST RESPONDERS HAVE A NEW ROBOTIC SIDEKICK

Time: 14:46

Duration: 7:42

Synopsis: While the public safety industry has slowly evolved, entrepreneur Doron Kempel says there hasn't been a large push for innovation in recent years. Kempel founded Bond – a private security company that's betting big on drones working alongside first responders in emergency situations. He explains how these robots can advance the field by improving response times, providing more on-scene information through video, and more.

Host: Nancy Benson

Producer: Kristen Farrah

Guests: Doron Kempel, Founder, Bond

Compliance issues: First Responders, Private Security, Public Safety, Drones, Surveillance, Public Health, Technology, Emergency Services, Robots, Public Security

Links for more info:

[Doron Kempel - Wikipedia](#)

[Bond Air Guardian](#)

Program 22-34

Air Week: 8/21/2022

Executive Producer: Amirah Zaveri

Production Manager: Jason Dickey

SEGMENT 1: 988: THE NEW NUMBER FOR SUICIDE AND CRISIS PREVENTION

Time: 1:50

Duration: 11:32

Synopsis: In many households, mental health isn't talked about until it's too late. Fortunately, the Substance Abuse and Mental Health Services Administration created a suicide and crisis hotline in 2005 to help those struggling. This year, the ten-digit number was changed to just three: 988. Experts explain how this change will help increase awareness and access to prevention resources.

Host: Reed Pence

Producer: Kristen Farrah

Guests: Colleen Carr, Director, National Action Alliance for Suicide Prevention; Eileen Davis, Vice President, Mass 211, Director, Call2Talk

Compliance issues: Public Safety, Public Health, Mental Health, Emergency Preparedness, Consumerism, Vulnerable populations, Mental Health Awareness, Prevention, Crisis, Suicide

Links for more info:

[The Lifeline and 988](#)

[Colleen Carr | National Action Alliance for Suicide Prevention](#)

[Eileen Davis \(@matildasu\) / Twitter](#)

[Mass 211](#)

SEGMENT 2: THE TATTOOS THAT GIVE BREAST CANCER SURVIVORS THEIR IDENTITY BACK

Time: 14:34

Duration: 8:11

Synopsis: Tattoos can be a sign of expression, but for survivors of breast cancer, the art means something different. Areola restoration is a subset of medical tattooing – an advanced form of cosmetic tattooing. It can provide a sense of closure for the women who've battled cancer and undergone mastectomies. Shana Irish discusses how medical tattooing can help these women finally feel comfortable in their own skin.

Host: Nancy Benson

Producer: Kristen Farrah

Guests: Shana Irish, Licensed and Certified Permanent Makeup Artist and Medical Tattooist, Owner, Skyn Studio

Compliance issues: Mastectomy, Vulnerable populations, Cancer Survivors, Patient Safety, Medical Tattooing, Mental Health, Scar Therapy, Areola Restoration, Breast Cancer

Links for more info:

[SKYN STUDIO](#)

[Shana Irish](#)

Program 22-35

Air Week: 8/28/2022

Executive Producer: Amirah Zaveri

Production Manager: Jason Dickey

SEGMENT 1: OFFSHORING MEDICATION: WHERE ARE YOUR GENERIC DRUGS BEING MADE?

Time: 1:50

Duration: 12:44

Synopsis: According to Georgetown University's Health Policy Institute, 66% of all U.S. adults use prescription drugs – and a majority of those are generic. So why don't we know where these products are made? Dr. Rena Conti shares non-public data to show where much of the medication Americans ingest every day are manufactured.

Host: Reed Pence

Producer: Kristen Farrah

Guests: Dr. Rena Conti, Associate Professor of Markets, Public Policy, and Law, Questrom School of Business, Boston University

Compliance issues: Trade Secret, Waste Disposal and Landfills, Generic Drugs, Patient Safety, Prescription Medication, Ethics, Public Health, Pharmaceutical Industry, Consumerism

Links for more info:

[Rena Conti - Professor Testimonial | Questrom School of Business](#)

[Dr. Rena Conti \(@contirena1\) / Twitter](#)

[Geography of prescription pharmaceuticals supplied to the USA: levels, trends, and implications | Journal of Law and the Biosciences](#)

[Generic Drug Facts | FDA](#)

SEGMENT 2: WHY CHEMOTHERAPY MAY NOT ALWAYS BE THE BEST OPTION

Time: 15:36

Duration: 7:05

Synopsis: Cancer is a ruthless disease, which is why the traditional treatment methods are so aggressive. But does everyone need chemo? Dr. Jeanne Tie doesn't think so. She's created a blood test that determines whether chemotherapy is necessary for patients living with colon cancer.

Host: Nancy Benson

Producer: Grace Galante

Guests: Dr. Jeanne Tie, Medical Oncologist, Peter MacCallum Cancer Centre; Sabrina Rojas, Stage Four Colon Cancer Patient

Compliance issues: Precision Medicine, Rare Conditions, Colon Cancer, Cancer Treatment, Patient Safety, Cancer Survivors, Chemotherapy, Colorectal Cancer

Links for more info:

[A/Prof Jeanne Tie | Peter MacCallum Cancer Centre](#)

[Jeanne Tie \(@JeanneTie\) / Twitter](#)

[Circulating Tumor DNA Analysis Guiding Adjuvant Therapy in Stage II Colon Cancer](#)

[My Book | INSPIRE QUEEN | 222 Mindset - Sabrina Rojas | Keynote Speaker | Author](#)

Program 22-36

Air Week: 9/4/2022

Executive Producer: Amirah Zaveri

Production Manager: Jason Dickey

SEGMENT 1: PARASOCIAL RELATIONSHIPS: HOW CELEBRITIES INFLUENCE YOUR DECISIONS

Time: 1:50

Duration: 11:39

Synopsis: If you've ever felt connected to a movie star or celebrity, you've experienced a parasocial relationship. This one-sided connection gives the celebrity influence over your daily decision making and creates a feeling of friendship with someone you've never met. An expert explains both the benefits and drawbacks of parasocial relationships.

Host: Reed Pence

Producer: Kristen Farrah

Guests: Bradley Bond, Associate Professor of Communications, University of San Diego; Victoria Paris, Social Media Influencer

Compliance issues: Mental Health, Consumerism, Interpersonal Relationships, Psychology, Social Media, Relationships, Public Safety, Technology

Links for more info:

[Parasocial relationships, social media, & well-being - ScienceDirect](#)

[Biography - Bradley Bond, PhD - University of San Diego](#)

[Bradley J. Bond \(@bradleyjbond\) / Twitter](#)

[victoria paris \(@victoriaparis\) • Instagram photos and videos](#)

[Victoria Paris \(@victoriaparis\) Official TikTok](#)

SEGMENT 2: ENDING THE TRIAL AND ERROR TREATMENT METHOD FOR RHEUMATOID ARTHRITIS

Time: 14:31

Duration: 8:39

Synopsis: Many patients with rheumatoid arthritis are forced to try numerous, expensive medications until they find one that works. Fortunately, Scipher Medicine's new blood test offers a precision approach, discovering what medication will work the first time. Dr. Sam Asgarian discusses how the blood test works and how it's helping to change the future of autoimmune disease treatment.

Host: Nancy Benson

Producer: Kristen Farrah

Guests: Dr. Sam Asgarian, Chief Medical Officer, Scipher Medicine; Emma Larson, Rheumatoid Arthritis Patient

Compliance issues: Autoimmune Diseases, Precision Medicine, Molecular Testing, Genetics, Rheumatoid Arthritis, Vulnerable populations, Trial and Error Medicine, Patient Safety, Consumerism

Links for more info:

[PrismRA - molecular signature test](#)

[Scipher Medicine](#)

[Emma Larson \(@eannlarson\) • Instagram photos and videos](#)

[Sam Asgarian, MD | LinkedIn](#)

[Sam Asgarian \(@SamAsgarian MD\) / Twitter](#)

Program 22-37

Air Week: 9/11/2022

Executive Producer: Amirah Zaveri

Production Manager: Jason Dickey

SEGMENT 1: IT'S ALL IN YOUR HEAD: THE SCIENCE BEHIND EMOTIONAL INTELLIGENCE

Time: 1:50

Duration: 12:33

Synopsis: The field of emotion research is flooded with more opinions than facts, however, one main theory says our emotions are an instant response to the world around us. But does that mean we have no control? Two experts discuss the role of emotions and how you can foster your emotional intelligence.

Host: Reed Pence

Producer: Kristen Farrah

Guests: Andrew Ortony, Professor Emeritus of Psychology, Education, and Computer Science, Northwestern University; Nadine Levitt, Author, Founder, Wurrly, LLC, Founder, Inspired Educ8ion Inc

Compliance issues: Parenting, Emotion, Education, Public Health, Consumerism, Neurology, Child Psychology, Psychology, Emotional Intelligence

Links for more info:

[Nadine Levitt - Founder, Book Author - NOTA BENE ENTERTAINMENT, LLC \(My Mama Says\) | LinkedIn](#)

[Nadine Levitt \(@mrswurrly\) • Instagram photos and videos](#)

[WURRLYedu](#)

[Emotion Wonderland](#)

[Andrew Ortony Northwestern University | School of Education & Social Policy](#)

[The Cognitive Structure of Emotions](#)

SEGMENT 2: THE UNCLAIMED BODIES OF AMERICA

Time: 15:25

Duration: 7:19

Synopsis: Funerals happen nearly every day and are typically organized and paid for by loved ones. But what happens to the bodies that are never claimed? Dr. Pamela Prickett explains how states handle the dead who are left without any relatives or loved ones to bury them.

Host: Nancy Benson

Producer: Kristen Farrah

Guests: Dr. Pamela Prickett, Assistant Professor of Sociology, University of Amsterdam

Compliance issues: State Government and Legislation, Funerals, Vulnerable populations, Cremation, Homelessness, Death, Gender Issues, Economy, Autopsy, Unclaimed Bodies

Links for more info:

[Dr P.J. \(Pamela\) Prickett - University of Amsterdam](#)

[Pamela J. Prickett / Twitter](#)

Program 22-38

Air Week: 9/18/2022

Executive Producer: Amirah Zaveri

Production Manager: Jason Dickey

SEGMENT 1: ESPORTS: VIRTUAL GAMEPLAY WITH REAL LIFE CONSEQUENCES

Time: 1:50

Duration: 11:52

Synopsis: Even though esport players compete online instead of on a field, the growing sport still requires the same team of trainers and medical staff as football or soccer. And given the intense practice schedules, injuries are thought to be unavoidable. Experts discuss both physical and ergonomic strategies to best prevent career-ending injuries.

Host: Reed Pence

Producer: Kristen Farrah

Guests: Joanne Donoghue, Esport Exercise Physiologist, New York Tech CyBears, Associate Professor, College of Osteopathic Medicine, New York Institute of Technology; Mark Gugliotti, Associate Professor of Physical Therapy, New York Institute of Technology, Physical Therapist, New York Tech Cybears; Matthew Pinto, Athlete, New York Tech Cybears

Compliance issues: Osteopathic Medicine, Ergonomics, Vulnerable populations, Injury Risk, Posture, Children and Youth at Risk, Athletics, Gamer Health, Public Health, Esports, Video Games, Consumerism, Gaming

Links for more info:

[Esports Research](#)

[Mark Gugliotti | Bio | New York Tech](#)

[Joanne Donoghue | Bio | New York Tech](#)

[Joanne Donoghue \(@JoanneDonoghue4\) / Twitter](#)

SEGMENT 2: A DROP IN VACCINATION RATES PUTS US ALL AT RISK

Time: 14:44

Duration: 8:19

Synopsis: The World Health Organization reports that the pandemic fueled the largest drop in childhood vaccination rates in the last thirty years. In fact, New York recently revealed the first case of polio America has seen in over three decades. Experts explain how vaccines are made and why parents need to update their children's vaccines as soon as possible.

Host: Nancy Benson

Producer: Kristen Farrah

Guests: Dr. Avery August, Professor of Immunology, Cornell University, Member, The American Association of Immunologists; Dr. Julie Morita, Executive Vice President, Robert Wood Johnson Foundation, Member, The Advisory Committee to the Director at the CDC

Compliance issues: Polio, Public Safety, Childhood Vaccinations, Covid-19 Pandemic, Public Health, Consumerism, Infectious Disease, State Legislation, Vaccination

Links for more info:

[The American Association of Immunologists - National Immunization Awareness Month](#)

[Avery August | Cornell Research](#)

[Julie Morita - RWJF](#)

[Julie Morita \(@DrJulieMorita\) / Twitter](#)

Program 22-39

Air Week: 9/25/2022

Executive Producer: Amirah Zaveri

Production Manager: Jason Dickey

SEGMENT 1: HOW OUR MIND'S NATURAL DEFENSE CAN BE DEADLY FOR SOCIETY

Time: 1:50

Duration: 10:51

Synopsis: Why are we able to function after mass tragedies? The answer is a defense mechanism in our mind that Dr. Paul Slovic calls the Arithmetic of Compassion. He explains how three components essentially numb our feelings to help us move on after traumatic experiences. Unfortunately, the Arithmetic of Compassion can also influence us to turn our backs on others who are suffering.

Host: Reed Pence

Producer: Kristen Farrah

Guests: Dr. Paul Slovic, Professor of Psychology, University of Oregon, President, Decision Research

Compliance issues: Psychology, Psychic Numbing, Neuroscience, Emotion, Genocide, Vulnerable populations, Trauma, Mass Tragedy, Evolution, Compassion, Military and War, Empathy

Links for more info:

[Paul Slovic | Department of Psychology](#)

[Decision Research](#)

[The Arithmetic of Compassion](#)

[Paul Slovic \(@PaulatDR\) / Twitter](#)

SEGMENT 2: OUR MEMORIES ARE LYING TO US: THE MANDELA EFFECT

Time: 13:42

Duration: 8:46

Synopsis: The Mandela Effect is a phenomenon where large groups of people falsely remember the same information. But how is this possible? Experts discuss the possible causes, as well as how these false memories lead to errors in fields such as education and criminal justice.

Host: Nancy Benson

Producer: Kristen Farrah

Guests: Dr. Wilma Bainbridge, Assistant Professor, Department of Psychology, University of Chicago; Deepasri Prasad, PhD Candidate, Dartmouth College

Compliance issues: Technology, Consumerism, Criminal Justice System, False Information, Psychology, Mandela Effect, Public Safety, Vulnerable populations, Memory, Education

Links for more info:

[Deepasri Prasad | Department of Psychological and Brain Sciences](#)

[The Visual Mandela Effect as evidence for shared and specific false memories across people](#)

[Wilma A. Bainbridge | Department of Psychology | The University of Chicago](#)

[Brain Bridge Lab](#)

[Wilma Bainbridge \(@WilmaBainbridge\) / Twitter](#)



VIEWPOINTS RADIO

WEEF SUN 7:00am
WKTA TUES 4:30am
WPJX SUN 6:00am

About Viewpoints

Viewpoints is an entertaining, highly produced, contemporary radio magazine with two major stories weekly. Each week, *Viewpoints* features interviews with guests that have expertise and real-world experience regarding current events, social commentary, entertainment and more. The program is currently airing on over 650 radio stations throughout the country.

Meet the hosts

Marty Peterson

Marty became co-host of *Viewpoints* in 2008 and brings a unique background to the program. After earning a bachelor's degree from Dartmouth College and an MBA from Northwestern University, Marty entered the broadcast field in 2003, and since then has done numerous projects for outlets including National Geographic, The History Channel and the Weather Channel. She also serves on the Women's Board of a variety of non-profit organizations including the Field Museum, the Lincoln Park Zoo, and Northwestern University.

Gary Price

Viewpoints co-host Gary Price is a veteran radio programmer and voice-over talent. He has been the program director of legendary stations such as WOKY Milwaukee and Chicago's WLS-FM, WCFL, WTMX, and WMET, as well as operations director for Infinity's WJJD-WJMK. Recently, Gary has done numerous projects for outlets including the United Nations, NASA, the Smithsonian Institution, and the New York Stock Exchange.



Quarterly Report of Compliancy Issues & Programs List 2022-Q3 (July - September) Viewpoints Radio

- Agriculture
- Armed Forces
- Athletics
- Attribution Science
- Business
- Career
- Child Development
- Childcare
- Civil Rights
- Climate Change
- Climate Economics
- Communication
- Community Affairs
- Community Revenue
- Conflict
- Consumerism
- Culture
- Death
- Diversity
- Economy
- Education
- Energy Production
- Engineering
- Environment
- Equality
- Exploration
- Extreme Weather
- Fashion
- Fashion Trends
- Federal Aid
- Film
- Food and Beverage
- Garment Production
- Gender Roles
- Global Issues
- Global Trends
- Government
- Government Funding
- Government Programs
- Health
- Higher Education
- History
- Hobby
- Housing
- Human Behavior
- Human Rights
- Immigration
- Inequality
- Infrastructure
- Innovation
- Labor Shortages
- Land Development
- Law
- Law Enforcement
- Literature
- Local Government
- Mathematics
- Media
- Mental Health
- Military
- Military Service
- Mobility
- Movie Business
- Music
- Natural Disaster
- Natural Resources
- News
- Oceanic Exploration
- Parenting
- Personal Finance
- Personal Growth & Development
- Police Reform
- Politics
- Poverty
- Psychology
- Public Education
- Public Resource
- Public Safety
- Race
- Race Relations
- Racial Inequality
- Racial Issues
- Relationships
- Renewable Energy
- Science
- Small Business
- Social Media
- Society
- Sports Culture & History
- Sustainability
- Technology
- Tourism
- Trade
- Transportation
- Travel
- TV
- War
- Waste Management
- Wealth Inequality

Program 22-27**Air Week:** 7/3/2022**Executive Producer:** Amirah Zaveri**Production Manager:** Jason Dickey**SEGMENT 1: GAINING A GREATER UNDERSTANDING OF MILITARY EXPERIENCE****Time:** 1:47**Duration:** 8:58

Synopsis: There are close to two million Americans serving in the U.S. Armed Forces, according to 2021 data from the Department of Defense. The U.S. is considered to have the world's strongest military, yet many Americans are disconnected from this subject of American culture. We speak with two experts about why this is and how the gap can be bridged between civilians and those who serve.

Host: Gary Price**Producer:** Amirah Zaveri

Guests: Phil Klay, veteran, writer, author of *Uncertain Ground: Citizenship in an Age of Endless, Invisible War*; Dr. Carl Castro, veteran, associate professor, School of Social Work, University of Southern California, director, Military and Veterans Programs, University of Southern California.

Compliance issues: Communication, Military Service, Culture, Armed Forces, Career, Military, Mental Health, Government, Psychology

Links for more info:

Phil Klay

Phil Klay (@PhilKlay) / Twitter

Uncertain Ground: Citizenship in an Age of Endless, Invisible War by Phil Klay

Military-Transition.org

Your VA Transition Assistance Program (TAP) - Outreach, Transition and Economic Development

SEGMENT 2: A PARENT'S PLIGHT**Time:** 12:47**Duration:** 10:16

Synopsis: With the Child Tax Credit coming to an end, many U.S. parents are finding it hard to make ends meet with little help from the government – especially amid rising inflation. We speak with Dr. Dana Suskind about how this lack of support severely impacts children during critical development years.

Host: Marty Peterson**Producer:** Amirah Zaveri

Guests: Dana Suskind, professor, surgery and pediatrics, University of Chicago Medical Center, co-director, TMW Center for Early Learning and Public Health, University of Chicago Medical Center, author of *Parenting Nation: Unlocking Every Child's Potential, Fulfilling Society's Promise*.

Compliance issues: Personal Finance, Politics, Child Development, Parenting, Childcare, Health, Government Funding

Links for more info:

Dana L. Suskind, MD | University of Chicago Department of Surgery

Dr. Dana Suskind (@DrDanaSuskind) / Twitter

Parent Nation: Unlocking Every Child's Potential, Fulfilling Society's Promise Hardcover – Amazon.com

Racial justice organizations call to reinstate the enhanced child tax credit: 'This really helped a lot of low-income families' - CNBC



CULTURE CRASH: THE NEWEST OFFERINGS OUT TO STREAM NOW

Time: 23:53

Duration: 2:35

Synopsis: We explore some of the latest TV shows and movies now available on streaming platforms from Netflix to HBO Max.

Host: Evan Rook

Producer: Evan Rook

Compliance issues: TV, Culture

Program 22-28**Air Week:** 7/10/2022**Executive Producer:** Amirah Zaveri**Production Manager:** Jason Dickey**SEGMENT 1: THE COST OF MORE FREQUENT WEATHER-RELATED DISASTERS****Time:** 1:47**Duration:** 10:42

Synopsis: In 2021, climate disasters cost the U.S. more than 145 billion dollars and led to the deaths of 688 people. Each year, these extreme weather events are growing to be more frequent as the climate shifts. We discuss the growing economic toll of these mass destruction events and what can be done to switch course.

Host: Gary Price**Producer:** Amirah Zaveri

Guests: Bob Keefe, executive director, Environmental Entrepreneurs, author of *Climatenomics: Washington, Wall Street and the Economic Battle to Save Our Planet*.

Compliance issues: Extreme Weather, Natural Disaster, Environment, Climate Economics, Climate Change, Federal Aid, Economy

Links for more info:

The world will need dozens of breakthrough climate technologies in the next decade

Climatenomics: Washington, Wall Street and the Economic Battle to Save Our Planet: Keefe, Bob
bkeefee2 / Twitter

2021's extreme weather cost 688 lives and \$145 billion in the US : NPR

SEGMENT 2: THE GIFT ECONOMY**Time:** 14:31**Duration:** 9:09

Synopsis: There's more spots to find secondhand items apart from Goodwill or a local antique store. Next time you're in the market for something specific, go online and search if your area has a Buy Nothing group. This week – we highlight the 'buy nothing' mentality and how the platform works.

Host: Marty Peterson**Producer:** Polly Hansen

Guests: Liesl Clark, co-founder, Buy Nothing Project; Maggie McMeekin, administrator, Buy Nothing Facebook Group, Arlington Heights, Ill.

Compliance issues: Personal Finance, Technology, Environment, Waste Management, Consumerism

Links for more info:

BNProject | About Us

Everything You Ever Wanted to Know About Buy Nothing Groups | Real Simple



CULTURE CRASH: THE BOX OFFICE BOOM

Time: 24:40

Duration: 1:42

Synopsis: We explore some of our favorite films at the box office that have struck gold so far this summer.

Host: Evan Rook

Producer: Evan Rook

Compliance issues: Culture, Movie Business, TV

Program 22-29**Air Week:** 7/17/2022**Executive Producer:** Amirah Zaveri**Production Manager:** Jason Dickey**SEGMENT 1: REIMAGINING BEACH TOURISM CULTURE****Time:** 1:47**Duration:** 9:56

Synopsis: Almost two-thirds of all Americans will be jetting away this summer. For some, this means traveling to a tropical paradise filled with relaxation. While the all-inclusive resort is an easy pick, it might be worth rethinking this choice. We cover the highly popular global beach tourism industry and the dark side of this foreign tourist-focused culture.

Host: Gary Price**Producer:** Amirah Zaveri

Guests: Sarah Stodola, writer, author of *The Last Resort: A Chronicle of Paradise, Profit, and Peril at the Beach*; Maile Meyer, Hawaii native, business owner, Native Books.

Compliance issues: Sustainability, Environment, Culture, Land Development, Travel

Links for more info:

The Last Resort: A Chronicle of Paradise, Profit, and Peril at the Beach Hardcover – June 28, 2022

Sustainable Travel International

Maile Meyer Long Story Short with Leslie Wilcox

SEGMENT 2: LEARNING ABOUT WINE**Time:** 13:45**Duration:** 9:00

Synopsis: Finding the right wine can be extremely intimidating if you don't know what you're looking for. Strolling through the wine aisle, it can sometimes be easier to give up and choose a bottle based off whether you like the label or not. It's true that wine is complex – after all it dates back to 6000 B.C. Expert sommelier Elizabeth Schneider joins Viewpoints this week to give us an introduction to all things wine.

Host: Marty Peterson**Producer:** Polly Hansen

Guests: Elizabeth Schneider, sommelier, podcast host, *Wine for Normal People*.

Compliance issues: Literature, Agriculture, Culture, Food and Beverage, History, Hobby, Business

Links for more info:

Elizabeth Schneider (@NormalWine) / Twitter

Wine Folly

History of Winemaking

CULTURE CRASH: THE WORLD OF HARRY POTTER**Time:** 23:45**Duration:** 2:43**Synopsis:** Are you more of a Harry Potter book fan or film fan? We discuss this expansive wizarding world this week on Culture Crash.**Host:** Evan Rook**Producer:** Evan Rook**Compliance issues:** Film, Culture, Literature

Program 22-30**Air Week:** 7/24/2022**Executive Producer:** Amirah Zaveri**Production Manager:** Jason Dickey**SEGMENT 1: LEFT IN THE DUST: FORGOTTEN BLUE-COLLAR U.S. CITIES & TOWNS****Time:** 1:47**Duration:** 9:41

Synopsis: Orick, California; Lawrence, Kansas; Detroit, Michigan. These are just a few of the towns and cities across the U.S. that have fallen off the map. Stanford University law professor and author Michelle Wilde Anderson joins us this week to explain why these areas have declined over time and how residents have suffered during this downturn.

Host: Gary Price**Producer:** Amirah Zaveri

Guests: Michelle Wilde Anderson, professor of property, local government, environmental justice, Stanford Law School, author of *The Fight to Save the Town: Reimagining Discarded America*.

Compliance issues: Tourism, Personal Finance, Wealth Inequality, Politics, Public Resource, Innovation, Small Business, Community Revenue, History, Local Government, Housing

Links for more info:

Michelle Wilde Anderson - Faculty - Stanford Law School

Michelle W. Anderson (@MWildeAnderson) / Twitter

The Fight to Save the Town | Book by Michelle Wilde Anderson | Official Publisher Page | Simon & Schuster

SEGMENT 2: PROGRESS IN POLICING INITIATIVES SINCE GEORGE FLOYD'S DEATH**Time:** 13:30**Duration:** 8:38

Synopsis: What's changed in policing since May of 2020 when George Floyd was murdered by Minneapolis police? Two experts in law and police policy join us this week to share some current statistics on police violence in the U.S. and some of the updated policies that have taken hold over the last two years.

Host: Marty Peterson**Producer:** Polly Hansen

Guests: Daniel Harawa, associate professor, law, Washington University at St. Louis; Janice Iwama, assistant professor, public affairs, American University in Washington D.C.

Compliance issues: Law Enforcement, Race, Public Safety, Law, Government, Police Reform

Links for more info:

Police Violence Report

Mapping Police Violence

Two Years After George Floyd, Black Leaders Reflect On Change | Forbes

CULTURE CRASH: OUR FAVORITE SCI-FI FILM PICKS**Time:** 24:27**Duration:** 2:00**Synopsis:** From “Interstellar” to “Solaris”, we love a good sci-fi movie that transports us to a new dimension and time. We highlight some of our favorites and why the genre continues to be popular.**Host:** Evan Rook**Producer:** Evan Rook**Compliance issues:** Film, Culture

Program 22-31**Air Week:** 7/31/2022**Executive Producer:** Amirah Zaveri**Production Manager:** Jason Dickey**SEGMENT 1: SUPPORTING REFUGEE RESETTLEMENT****Time:** 1:47**Duration:** 8:25**Synopsis:** There are more than 27 million refugees in the world. This population has lost their homes, their culture and their identities as a result of conflict, persecution, etc. We speak with two experts about the refugee experience and just how difficult it can be to start a new life somewhere else.**Host:** Gary Price**Producer:** Grace Galante**Guests:** Dr. Diya Abdo, author of *American Refugee: The Stories of the Refugee Experience*, founder, Every Campus a Refuge; Luma Mufleh, CEO & Founder, Fugees Family.**Compliance issues:** Diversity, Immigration, War, Human Rights, Government, Culture, Conflict**Links for more info:**

About the Global Refugee Crisis - EVERY CAMPUS A REFUGE®

Fugees Family

American Refugee by Diya Abdo | PenguinRandomHouse.com: Books**SEGMENT 2: AN UNTOLD NARRATIVE OF AFRICA & THE MODERN WORLD****Time:** 12:14**Duration:** 9:07**Synopsis:** Are you familiar with the African leader, Mansa Musa? Most people have never heard this name. However, he was an instrumental figure in early Europe's expansion. This week – we highlight a lesser-known narrative about how Europe exploited African gold and labor in order to fuel its expansion.**Host:** Maty Peterson**Producer:** Amirah Zaveri**Guests:** Howard French, historian, professor, journalism, Columbia University, author of *Born in Blackness: Africa, Africans, and the Making of the Modern World: 1471 to the Second World War*.**Compliance issues:** History, Racial Inequality, Trade, Economy, Natural Resources, Exploration**Links for more info:**

Howard W. French | Columbia Journalism School

Howard French (@hofrench) / Twitter

Born in Blackness: Africa, Africans, and the Making of the Modern World, 1471 to the Second World War
Hardcover

CULTURE CRASH: THIS YEAR'S SUMMER ANTHEM**Time:** 24:00**Duration:** 2:27**Synopsis:** This 1980's hit by artist Sophia Bush is making a resurgence thanks to a recent Stranger Things episode.**Host:** Evan Rook**Producer:** Evan Rook**Compliance issues:** Culture, Music

Program 22-32**Air Week:** 8/7/2022**Executive Producer:** Amirah Zaveri**Production Manager:** Jason Dickey**SEGMENT 1: THE EARLY HISTORY OF THE NBA****Time:** 1:47**Duration:** 8:50

Synopsis: The NBA was founded in 1946 in New York City. For many years, the organization was predominantly white. Today, more than 75 percent of its players are black. We speak with basketball expert and former NBA player and coach Ray Scott about the league's early years and its efforts to evolve in a time when segregation and discrimination ran rampant.

Host: Gary Price**Producer:** Grace Galante**Guests:** Ray Scott, former NBA player & coach, author of *The NBA in Black and White*.**Compliance issues:** Equality, Sports History, Media, Sports, Civil Rights, Business, Sports Culture, Career, History**Links for more info:**

The NBA in Black and White by Ray Scott | PenguinRandomHouse.com

NBA: Is Wilt Chamberlain the Most Undersold Superstar in NBA History? | News, Scores, Highlights, Stats, and Rumors | Bleacher Report

SEGMENT 2: THE STYLES THAT PERSIST TIME & FAST-FASHION TRENDS**Time:** 12:39**Duration:** 8:09

Synopsis: There are some items of clothing that truly never go out of style. Whether it's a pair of crisp blue jeans or a classic little black dress, these pieces persist time and seasonal trends. Fashion writer and author of *The Ten*, Lauren Cochrane joins us this week to highlight some of the most iconic clothes in fashion history and how these pieces shaped American style culture.

Host: Maty Peterson**Producer:** Amirah Zaveri**Guests:** Lauren Cochrane, senior fashion writer, *The Guardian*, author of *The Ten: How and Why We Wear the Fashion Classics*.**Compliance issues:** Culture, Global Trends, History, Garment Production, Fashion Trends, Fashion, Consumerism**Links for more info:**

The Story Behind That Little Black Dress Worn by Audrey Hepburn In 'Breakfast At Tiffany's' – Vogue Hong Kong

The Ten: How and why we wear the fashion classics

CULTURE CRASH: THE RACE TO STAY PRESENT FOR SOCIAL MEDIA SITES**Time:** 23:38**Duration:** 2:59**Synopsis:** With TikTok continuously adding new users, many platforms like Instagram and Facebook are fighting to stay current with new updates mimicking TikTok. But, what if some of us like these OG platforms the way they are?**Host:** Evan Rook**Producer:** Evan Rook**Compliance issues:** Culture, Music

Program 22-33**Air Week:** 8/14/2022**Executive Producer:** Amirah Zaveri**Production Manager:** Jason Dickey**SEGMENT 1: ELEVATING SOLAR ENERGY****Time:** 1:47**Duration:** 8:42

Synopsis: In the first quarter of 2022, solar power made up 50 percent of all new electricity-generating capacity in the country. On top of this, residential solar installations also had its biggest quarter ever, with a 30 percent increase in demand year-over-year, according to the Solar Energy Industries Association. While current solar energy relies on the sun, scientists are now developing new technology that would allow for 24/7 energy absorption. We speak with an expert about this exciting development and what lies ahead.

Host: Gary Price**Producer:** Alex Winton

Guests: Ned Ekins-Daukes, associate professor, School of Photovoltaic & Renewable Energy Engineering, University of New South Wales, Sydney, Australia.

Compliance issues: Energy Production, Engineering, Innovation, Sustainability, Climate Change, Renewable Energy

Links for more info:

Associate Professor N.J. Ekins-Daukes | UNSW Research
Invisible light can now be harnessed for solar power | Euronews

SEGMENT 2: THE WORSENING TEACHER SHORTAGE**Time:** 12:29**Duration:** 9:05

Synopsis: Over the last two years, 10% of teachers have left the field. That equates to 300,000 teachers gone. There are many reasons for this exodus, but with millions of students heading back to school this fall – what’s being done to get more teachers back in the classroom?

Host: Maty Peterson**Producer:** Grace Galante

Guests: Fedrick Ingram, teacher, Miami-Dade Public Schools, secretary-treasurer, American Federation of Teachers; Dr. Lynn Gangone, President, CEO, American Association of Colleges for Teacher Education.

Compliance issues: Infrastructure, Personal Finance, Education, Career, Mental Health, Public Education

Links for more info:

American Association of Colleges for Teacher Education (AACTE)
American Federation of Teachers
Resolution on Strengthening Support of Public School Teachers
How Can We Solve the Teacher Staffing Shortage?

CULTURE CRASH: SAYING YES TO JORDAN PEELE'S "NOPE"**Time:** 24:03**Duration:** 2:24**Synopsis:** We cover the release of "Nope" – a new film written, directed and produced by sketch comic turned superstar director Jordan Peele.**Host:** Evan Rook**Producer:** Evan Rook**Compliance issues:** Film, Culture

Program 22-34**Air Week:** 8/21/2022**Executive Producer:** Amirah Zaveri**Production Manager:** Jason Dickey**SEGMENT 1: THE RISE OF BOOKTOK****Time:** 1:47**Duration:** 9:41

Synopsis: More young people are reading these days thanks to one community on TikTok. We discuss the rise of BookTok and how publishers and authors are using this platform to better engage with consumers.

Host: Gary Price**Producer:** Polly Hansen

Guests: Cait Jacobs, TikTok account owner, Cait's Books; Claire Wallace, vice president, communications, Book Talk.

Compliance issues: Literature, Social Media**Links for more info:**

The Most Popular TikTok Books #BookTok | Barnes & Noble®

How TikTok Became a Best-Seller Machine - The New York Times

BookTalk (@BookTalkEvent) / Twitter

SEGMENT 2: DECISIONS, DECISIONS: UNDERSTANDING CONFORMITY BIAS**Time:** 13:30**Duration:** 8:03

Synopsis: Ever agree in the moment, but then look back and wish you spoke up and said something? This action of wanting to go with the flow is a very real phenomenon. We sit down with two experts to uncover how people's actions and opinions are altered by conformity bias.

Host: Maty Peterson**Producer:** Polly Hansen

Guests: Robert Prentice, professor, business ethics, business law, McCombs School of Business, University of Texas at Austin, faculty director, Unwrapped Video Project, Center for Leadership and Ethics, McCombs School of Business; Todd Rose, co-founder, president, Populace, author of *Collective Illusions: Conformity, Complicity and the Science of Why We Make Bad Decisions*.

Compliance issues: Culture, Career, Society, Human Behavior, Psychology, Communication**Links for more info:**

Robert Prentice | McCombs School of Business

Collective Illusions — Todd Rose

Todd Rose on why we shouldn't all just get along or conform | McKinsey

CULTURE CRASH: THE END OF "BETTER CALL SAUL"**Time:** 24:07**Duration:** 2:17**Synopsis:** We discuss the series finale of the six-season show "Better Call Saul" featuring actor Bob Odenkirk as attorney, Saul Goodman.**Host:** Evan Rook**Producer:** Evan Rook**Compliance issues:** TV, Culture

Program 22-35**Air Week:** 8/28/2022**Executive Producer:** Amirah Zaveri**Production Manager:** Jason Dickey**SEGMENT 1: ONE MAN, TWO PATHS: BUILDING A CAREER IN THE NFL AND APPLIED MATHEMATICS****Time:** 1:47**Duration:** 9:41

Synopsis: John Urschel is not your typical mathematician. Before earning his PhD in applied mathematics from MIT, Urschel played college football at Penn State and then went on to play in the NFL with the Baltimore Ravens. For several years, he was able to juggle both passions and reach the top echelons of both sport and academia. This week – we touch on his unique path and what he’s learned along the way.

Host: Gary Price**Producer:** Amirah Zaveri

Guests: John Urschel, former NFL offensive guard, Baltimore Ravens, junior fellow, mathematics, Harvard University, author of *Mind and Matter: A Life in Math and Football*.

Compliance issues: Career, Mathematics, Higher Education, Personal Growth and Development, Sports

Links for more info:

John Urschel quit the NFL for a career in math. It wasn’t just about the concussions. - The Washington Post

Mind and Matter: A Life in Math and Football Hardcover

SEGMENT 2: HAVE AMERICANS STOPPED KEEPING UP WITH THE NEWS?**Time:** 13:30**Duration:** 8:02

Synopsis: If you were to guess what the fastest growing news source for adults is what would you say? If you jokingly said TikTok...you’re right. More Americans are turning to social media for their news instead of seeking out information from established news outlets. This shift applies to both conservative and liberal consumers of news. We discuss what’s driving this push and how it’s affecting the accuracy of information.

Host: Marty Peterson**Producer:** Grace Galante

Guests: Joel Kaplan, professor, news, magazine, digital journalism, Syracuse University; Rolf Dobelli, author of *Stop Reading the News: A Manifesto for a Happier, Calmer and Wiser Life*.

Compliance issues: Politics, Mental Health, Global Issues, News, Media, Social Media

Links for more info:

Joel Kaplan | Newhouse School at Syracuse University

Stop Reading the News: A Manifesto for a Happier, Calmer and Wiser Life: Dobelli, Rolf: Amazon.com

TikTok preps for midterm misinformation chaos - The Verge

CULTURE CRASH: A REVIEW OF "THE BEAR"**Time:** 24:03**Duration:** 2:24**Synopsis:** We discuss the new Hulu series "The Bear" about a young fine dining chef who returns to his Chicago roots to run the Italian beef joint his brother left to him.**Host:** Evan Rook**Producer:** Evan Rook**Compliance issues:** TV, Culture

Program 22-36**Air Week:** 9/4/2022**Executive Producer:** Amirah Zaveri**Production Manager:** Jason Dickey**SEGMENT 1: THE INVISIBLE POWER OF PRIVILEGE****Time:** 1:47**Duration:** 9:07

Synopsis: How often do you think about the privileges you have in life? What life experiences may have looked a bit different if you had darker skin or lighter skin? This week – we highlight conversations about the role of white privilege in American society and how the average person can push for greater racial justice.

Host: Gary Price**Producer:** Polly Hansen

Guests: Baynard Woods, writer, author of *Inheritance: An Autobiography of Whiteness*; Dr. David Canton, professor, history & director, African American Studies, University of Florida.

Compliance issues: Poverty, Racial Issues, History, Race Relations, Inequality, Education

Links for more info:

Race & Justice | NAACP

Racial Justice and Voting | Every Vote Counts

Dr. David A. Canton, Director – African American Studies

baynardwoods / Twitter

Inheritance: An Autobiography of Whiteness Kindle Edition**SEGMENT 2: PUBLIC TRANSPORTATION: SEEING A RESURGENCE OR RUNNING ON EMPTY?****Time:** 12:56**Duration:** 8:56

Synopsis: Public transportation – from trains to buses to trams – took a big hit in ridership and profits during the COVID-19 pandemic. Now, as more people are back and relying on these community systems once again, the future is unclear as many municipalities face record challenges. We speak with two experts in the sector about the current state of public transit in the U.S.

Host: Marty Peterson**Producer:** Alex Winton | Amirah Zaveri

Guests: Bradley Lane, associate professor, School of Public Affairs & Administration, University of Kansas; Bobby Sisneros, deputy director, transit, Albuquerque Transit Department.

Compliance issues: Mobility, Transportation, Personal Finance, Labor Shortages, Environment, Community Affairs, Government Programs

Links for more info:

American public transport faces a post-pandemic reckoning | The Economist

Bradley Lane | School of Public Affairs and Administration

CULTURE CRASH: NATHAN FIELDER IS BACK**Time:** 24:29**Duration:** 2:00**Synopsis:** We explore the new docu-comedy series, "The Rehearsal" produced and directed by Canadian comedian Nathan Fielder who's best known for his parody reality show, "Nathan For You".**Host:** Evan Rook**Producer:** Evan Rook**Compliance issues:** TV, Culture

Program 22-37**Air Week:** 9/11/2022**Executive Producer:** Amirah Zaveri**Production Manager:** Jason Dickey**SEGMENT 1: CONVERSATIONS ABOUT LOSS AND DEATH****Time:** 1:47**Duration:** 10:01

Synopsis: Death is a natural part of life, yet we avoid talking about it in American society. We speak with a psychiatrist and expert in grief and trauma about how parents, caregivers and adults in general can best have conversations with young people about loss and death. How do you broach the subject? What shouldn't you say? We answer these questions and more this week on Viewpoints.

Host: Gary Price**Producer:** Amirah Zaveri

Guests: Dr. Elena Lister, psychiatrist, associate professor, Cornell University, Columbia University Medical Centers, author of Giving Hope Conversations with Children About Illness, Death and Loss.

Compliance issues: Death, Child Development, Parenting, Communication, Mental Health

Links for more info:elenalistermd.com

Elena G Lister, MD | Columbia University Department of Psychiatry

Elena Lister MD (@elenalistermd1) / Twitter

SEGMENT 2: THE MENTAL HEALTH EPIDEMIC PLAGUING COLLEGIATE SPORTS**Time:** 13:50**Duration:** 7:40

Synopsis: 35 percent of collegiate athletes have experienced a mental illness at some point in their lives. We speak with a sports psychologist this week about the rising prevalence of mental health disorders among young athletes and what's being done to improve support services and get rid of stigma both on campus and off-campus.

Host: Marty Peterson**Producer:** Grace Galante

Guests: Dr. Julie Amato, clinical and sports psychologist, Princeton University, Lafayette College.

Compliance issues: Athletics, Higher Education, Sports, Psychology, Mental Health

Links for more info:

Julie Amato - Sport Psychologist - Staff Directory - Princeton University Athletics

Mental Health Educational Resources - NCAA.org

National Suicide Prevention Lifeline

CULTURE CRASH: FALL MOVIE RELEASES**Time:** 24:01**Duration:** 2:27**Synopsis:** We cover some of the blockbuster films making their debut this fall at a theatre near you.**Host:** Evan Rook**Producer:** Evan Rook**Compliance issues:** TV, Culture

Program 22-38**Air Week:** 9/18/2022**Executive Producer:** Amirah Zaveri**Production Manager:** Jason Dickey**SEGMENT 1: BREAKING GENDERED ROLES IN THE HOUSEHOLD****Time:** 1:47**Duration:** 7:57

Synopsis: More men and women these days are both working full-time, yet household tasks are still unevenly handled predominantly by women. We sit down with gender expert Kate Mangino about this imbalance in cognitive labor and physical chores and how more of a balance can be carved out in current relationships and future generations.

Host: Gary Price**Producer:** Amirah Zaveri**Guests:** Kate Mangino, gender expert, author of *Equal Partners: Improving Gender Equality at Home*.**Compliance issues:** Gender Roles, Relationships, Parenting, Equality**Links for more info:**

Equal Partners: Improving Gender Equality at Home – Hardcover

Gender Equity Starts in the Home - Harvard Business Review

SEGMENT 2: THE LOST WORLD OF SHIPWRECKS**Time:** 11:46**Duration:** 9:41

Synopsis: There are an estimated three million shipwrecks lying under the ocean and underground. We speak with author Daniel Stone this week about these fascinating structures that give us a fascinating look into a past era.

Host: Marty Peterson**Producer:** Amirah Zaveri**Guests:** Daniel Stone, senior editor, National Geographic, author of *Sinkable: Obsession, The Deep Sea, and the Shipwreck of the Titanic*.**Compliance issues:** Science, Culture, History, Oceanic Exploration, Literature**Links for more info:**

Daniel Stone (@DanEnRoute) / Twitter

Sinkable: Obsession, the Deep Sea, and the Shipwreck of the Titanic - a book by Daniel Stone

CULTURE CRASH: A TRUE VIEWING EXPERIENCE**Time:** 23:38**Duration:** 2:49**Synopsis:** We cover the dilemma of cropping full-screen shows and films to fit our modern, widescreen TVs. Many who are against this edit argue that changing this format ruins the media's original form.**Host:** Evan Rook**Producer:** Evan Rook**Compliance issues:** Culture, TV

Program 22-39**Air Week:** 9/25/2022**Executive Producer:** Amirah Zaveri**Production Manager:** Jason Dickey**SEGMENT 1: THE INCREASING OCCURRENCE OF WEATHER CALAMITIES****Time:** 1:47**Duration:** 9:46

Synopsis: Record-breaking flooding hit Pakistan this summer resulting in 1,500 lives lost and an estimated 10 billion dollars in damages. Around the world, countries are seeing weather extremes from excess flooding to severe drought and higher than average heat. We speak with two climate experts about the correlation between climate change and these extreme weather events.

Host: Gary Price**Producer:** Amirah Zaveri

Guests: Daniel Swain, climate scientist, University of California – Los Angeles, California Climate Fellow, The Nature Conservancy; Jonathon Overpeck, climate scientist, Dean, School for Environment & Sustainability, University of Michigan.

Compliance issues: Extreme Weather, Engineering, Climate Change, Attribution Science

Links for more info:

Daniel Swain, PhD

Daniel Swain (@Weather_West) / Twitter

Jonathan Overpeck (@GreatLakesPeck) / Twitter

Jonathan T. Overpeck | University of Michigan School for Environment and Sustainability

Why are Pakistan's floods so extreme this year?

SEGMENT 2: THE RISE OF YOUTUBE**Time:** 13:35**Duration:** 8:09

Synopsis: YouTube was created by three friends in 2005 and, shortly after, was sold to Google in 2006 for 1.65 billion dollars. Since then, it's become the largest video-sharing platform in the world (with a quarter of the world's population on the site) and continues to thrive with revenue exceeding 28 billion dollars in 2021. We discuss some of the platform's shortcomings and where it's headed next.

Host: Marty Peterson**Producer:** Amirah Zaveri

Guests: Mark Bergen, journalist, Bloomberg, Businessweek, author of Like, Comment, Subscribe: Inside YouTube's Chaotic Rise to World Domination.

Compliance issues: Social Media, Technology, Consumerism, Career, Media, Business

Links for more info:

Mark Bergen (@mhbergen) / Twitter

Everyone knows what YouTube is — few know how it really works - The Verge

Like, Comment, Subscribe by Mark Bergen | PenguinRandomHouse.com

CULTURE CRASH: A LIGHT FRIGHT FOR FALL**Time:** 24:14**Duration:** 2:13**Synopsis:** We review the new Netflix series, "Devil in Ohio" which offers a less-scary take than your typical gore-filled, killer-at-every-corner horror show.**Host:** Evan Rook**Producer:** Evan Rook**Compliance issues:** TV, Culture

PSA – COMMUNITY ANNOUNCEMENTS – ALERT NOTIFICATIONS

As with all multi-language stations, there is a specific and unique audience that is supporting and listening to its airwaves. Our producers know that to keep their listeners “in the know” with events, programs, notifications, seminars, fairs... is a way to connect the audience and return the audience and in return, the audience stays in tune with the program.

All the programs broadcast these entities in the homeland language to make all information clear and timely to its audience.

Polnet Communications LTD, has always supported the PSA vendors such as the

AD COUNCIL

IBA

Lake County Health department and Lake County College

Along with other state and local non-for-profits organizations. Usually we are able to provide a 60 seconds spot on top of each hour along with the station legal I.D.

The following are a sample of resources and sources of materials used to provide our PSA and community announcement choices. We also do not manipulate our producers with announcement choices, we feel that they know what is concerning and is of importance to their listenership.

Also during our self produced programming (MUSICLINES) we run several spots of PSA material during these times.

Browse Campaigns

All Community Education Environment Health & Wellness Safety

SORT BY: Campaign Title (A-Z)



Adoption from Foster Care



Alzheimer's Awareness



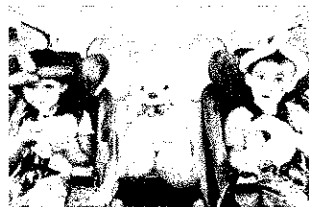
Belonging Begins With Us



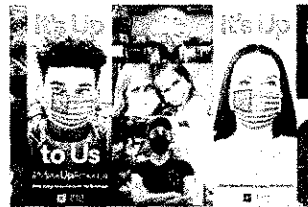
Buzzed Driving Prevention



Caregiver Assistance



Child Car Safety



Coronavirus Response



COVID-19 Vaccine Education



Disaster and Crisis Relief



Discovering Nature



Diversity & Inclusion



Drug-Impaired Driving Prevention



Emergency Preparedness



Emergency Preparedness - NYC

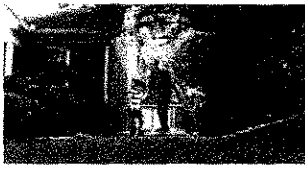


Empowering Girls in STEM

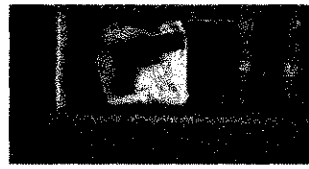


Ending Hunger





Fatherhood Involvement



Gun Safety



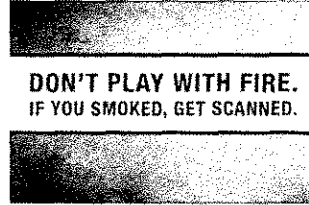
High Blood Pressure Control



High School Equivalency



LGBTQ+ Acceptance



Lung Cancer Screening



Middle School Mental Health



Racial Justice Series



Saving for Retirement



Shelter Pet Adoption



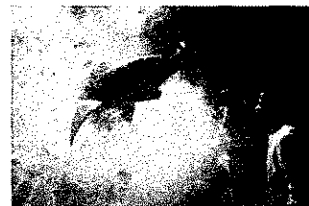
Suicide Prevention



Texting and Driving Prevention



Transforming Hiring & Diversifying Talent



Type 2 Diabetes Prevention



Veterans Crisis Prevention



Wildfire Prevention



Youth Vaping Prevention



©2022 The Ad Council

OUR STORY

[Our History](#)

[Our Team](#)

[Our Advisors](#)

[Our Partners](#)

OUR IMPACT

[Stories of Impact](#)

[Case Studies](#)

[Measuring Impact](#)

[Our Vaccine Equity](#)

OUR WORK

[All Campaigns](#)

[Download Center](#)

[Find Assets](#)

[FAQs](#)

LEARN WITH US

[Advertising Articles](#)

[News & Press Releases](#)

[AC Research Institute](#)

[Sign Up for Updates](#)

GET INVOLVED

[Partner With Us](#)

[Events](#)

[Join Our Team](#)

[Contact Us](#)