

2nd QUARTER TOP TEN ISSUES REPORT FOR 2022

WEEF 1430 AM and 99.1 FM

1. **ECONOMY** (Coronavirus, unemployment, cost of living, credit)
2. **HEALTH CARE** (Covid-19, vaccine, insurance coverage, cancer, hospital safety)
3. **PUBLIC SAFETY** (Ukraine War, Covid social distress, crime, environmental hazards)
4. **EDUCATION** (school openings, in home education)
5. **GOVERNMENT** (taxes, federal/state reforms, election concerns, women's rights)
6. **IMMIGRATION** (citizenship, deportation, borders, discrimination)
7. **AGING** (home care safety for elderly, social security, retirement plans)
8. **ENVIROMENT** (pollution, recycling, changing climate, traffic)
9. **TECHNOLOGIES** (privacy issues, cybercrime, costs of being connected)
10. **ARTS/CULTURE** (tolerance. issues, maintaining heritage beliefs, cost of arts)

The above list was compiled by the following methods. Views, opinions by brokers, producers. Letters, Calls and emails from listeners. Staff and management analyst. Local and national news media as well As social media.

During This report for the first quarter for the year of 2022, the escalated invasion of Ukraine by Russian militia is the world's main concern. The Chicagoland area having diverse populations of many cultures, those of direct decent are directly affected, while others understand this impact from history. Because of how immediate media can bring news and visuals at real time from many sources, everyone can feel the pain of being attacked on the grounds of your home.

All our international producers are updating the audience on latest developments and how the respected homelands are handling the crisis.

Pol net Communications are sponsoring/supporting events and funds to support The Ukraine. This tragedy places a spin on all the ten issues listed in this report. World disaster of war is felt world around.

Nationally and locally the situation with Inflation is hitting Americans hard with the high cost of gas and groceries. In part, because of the Ukraine crisis and the 3-year Covid situation, Inflation hit the United States hard, as well as the world in different ways. Supplies of certain materials are low while demand is high, the possibilities that interest rates may be on the increase make financial planning very difficult. Real-estate has To deal with uncertainty in all aspects of the industry.

Covid appears to be with the world also, it also appears that the world will have to learn to cope and live with it. While most mandates have been lifted and vaccines are still readily available, the future of covid is uncertain. We will continue any news from the CDC and notify our listeners of local government regulations and news to our listeners especially the elderly. Last year Covid was a high cause of death in America, behind heart disease and cancer.

The attention of violent crime has been an issue for all of the metropolitan area. The last quarter shopping malls have been hit with shootings (Northbrook Court, Rosemont and Oakbrook mail). As this report was being prepared, a gunman attacked the Highland Park parade, killing to date seven individuals and injuring dozens more. Gun violence is once front and center of communities in this area. We will always announce any safety updates and news on any expedited regulations on safety such as in local schools, business districts and all public areas.

Since the Supreme Court overturned Roe vs. Wade, women's rights have come in front and center for this year's election.

During any time of difficult times, there are scammers out there. Either hitting their victims door to door and most times internet scams are the ones that get most unsuspecting victims. If we're notified of such scams from the authorities, we will notify our listenership.

Polnet feels that the importance of localized programming when it comes to public/community issues really benefit the listener.

Media Tracks located in Des Plaines produces 2 localized programs (RADIO HEALTH JOURNAL and VIEWPOINTS). Both shows are syndicated nationwide and are nationally popular. But being based local, many guests are from local areas and information is of particular interest to this area. While these 2 programs not only fulfill the public issues needs for this period, the programs are of local origin and each program has multiple subjects being covered, just makes this an essential informative source to all our listeners.

Pol net is proud that all programming that originates from our Northbrook facility is locally based in the Chicagoland area. The Chicago Greek Hours as heard on WEEF based out of Morton Grove. K-Radio", the popular long running Korean program on WKTA is in Prospect Heights. The Entertaining and informative multiple Russian programming that airs on WKTA all originate in areas of Northbrook/Wheeling locations.

All these programs produce live news/community programming daily. Our brokers have the ability to inform of events and happenings in the home language of their broadcast. This is one of the reasons why free broadcast local radio is an essential broadcast tool to our specialized listening audience. Many of our producers have web streaming, publications and direct phone lines so listeners can connect multiple ways with their news source.

Local community institutions still provide many free services and events which we provide information to our audience in a public service announcement form. Sources such as the Northbrook Public Library provide many seminar types of services open to the public as well as the Lake County Health Department will on occasion have free health screenings on various concerns such as high blood pressure and diabetes.

Polnet is always looking to bring the best quality of sound and information to its listeners. Therefore, we encourage listeners to communicate back to us so we can be more informed of their interest, thoughts and concerns, as well as events. Communication is key to our business and to our listeners.

POLNET NORTHBROOK PRODUCER PUBLIC AFFAIR PROGRAMMING
WKTA PRODUCER BROADCAST PUBLIC AFFAIR

K-RADIO (9am-5pm M-F)

Broadcasts Mon-Fri appx 120 minutes of news and talk which covers local and international interest. Topics of economy, immigration, terrorism, health care, education, cultural and international affairs and are discussed daily and at times bilingually to broaden the understanding of the information that is being delivered. Programming is live and can prepare listeners of local alerts such as bad weather, traffic issues and amber alerts.

RUSSIAN PROGRAM "PrimeTime" (7am-9am and 5pm-7pm)

Broadcast 5 days a week. This program dedicates a good portion daily of its programming to news, politics and community interests. In the near future, WEEF will be able to present a roll sheet of topics and contacts of this program with the assistance of the producer

LA MEGA (VARIOUS TIMES)

In house production featuring Spanish music, News, Community interest of the greater Gurnee Lake County Area. Airs up to date, real time happenings that are concerns of the Hispanic area such as Immigration support and Corona Virus updates such as where testing is being held and where supplies are available. Interviews with community leaders where listeners can obtain support as to food pantries and employment opportunities.

WEEF PRODUCER BROADCAST PUBLIC AFFAIR

.CHICAGO GREEK HOURS – M – F 7:00am to Noon

This morning daily broadcast appx of 60 minutes of news and additional 30 minutes of community and PSA content which covers local and international interest. Topics of economy, immigration, terrorism, health care, education, cultural and international affairs and are discussed on a daily basis. Host Sam Rekoumis has been on the scene since the 80's when he took over the helm of producing duties from George Kafolapoulis. He also publishes a monthly paper with news of all interest.

36.6 - This Russian Health/Medical program is produced by Dr. E. Koles and airs on Saturdays from 10AM to 1PM.

LA MEGA (VARIOUS TIMES)


In house production featuring Spanish music, News, Community interest of the greater Gurnee Lake County Area. Airs up to date, real time happenings that are concerns of the Hispanic area such as Immigration support and Corona Virus updates such as where testing is being held and where supplies are available. Interviews with community leaders where listeners can obtain support as to food pantries and employment opportunities.

WPJX PRODUCER BROADCAST PUBLIC AFFAIR

REBEL RADIO 24/7 programming on WPJX participate in many local charity fundraisers and activities. A regular standard of daily PSA's air on this Heavy Metal program. Every Sunday WPJX airs MEDIA TRACKS programming that is locally produced in Des Plaines. Media Tracks provides 2 programs (RADIO HEALTH JOURNAL and VIEWPOINTS. Both shows are syndicated nationwide and are extremely popular coast to coast. But being locally based, many guests on the programs are from local areas and information is of particular interest to the community of the program's listenership.

WEEF, WKTA AND WPJX also when availability offers, will broadcast up to a minute of PSA product from the AD COUNCIL, IBA and other national and local non-for profits that have importance to the listening community. All stations air Media Track's Radio Health Journal and Viewpoint

RADIO HEALTH JOURNAL



The Latest in Health, Science & Technology

WEEF SUN 6:00am

WKTA MON 4:30am

WPJX SUN 7:00am

AboutRHJ

Radio Health Journal is an award-winning, contemporary radio magazine focusing on the latest in health, science, and technology. Featuring interviews with renowned medical experts, doctors, scientists, and professors, *Radio Health Journal* has a 25+ year track record of providing you with information you can trust. *Radio Health Journal* is currently airing on over 525 radio stations and available on your favorite podcast platform.

Meet the hosts

Nancy Benson was one of the founding hosts of *Radio Health Journal* when the program debuted in 1992. A former news reporter/anchor for WMAQ radio in Chicago, she has won numerous awards for reporting. Since joining the faculty of the University of Illinois, where she is Professor of Journalism, Benson has also become heavily involved in training journalists internationally. Previously, she worked in Rome as a public affairs consultant with the United Nations World Food Program.

Shel Lustig began his career in informational radio programming at Chicago's NPR affiliate, WBEZ, where he was a longtime host and producer of news magazine programs. At the PIA Radio Network, he produced Health Care and PIA Public Affairs before co-founding MediaTracks Communications, producer of *Radio Health Journal*. Lustig has won awards from organizations as varied as the Corporation for Public Broadcasting, the Education Writers Association and the International Radio Festival of New York.

Meet the producer

Reed PenceReed has been reporting on medicine since 1983, when he became host/producer of the Associated Press Radio Network's daily health feature. He later joined the PIA Radio Network as a producer of its programs Health Care and PIA Public Affairs. Since 1992, Pence has been host and lead producer of *Radio Health Journal*. He is a winner of numerous national and regional media awards from groups such as the Chicago Headline Club/Society of Professional Journalists, the Board of Directors of National Breast Cancer Awareness Month, MADD, and the National Hearing Conservation Association. Pence is a Kappa Tau Alpha honors graduate of the Medill School of Journalism at Northwestern University.

Quarterly Report of Compliancy Issues & Programs List 2022-Q2 (April - June) Radio Health Journal

- 911
- Abuse
- Addiction
- Aging & Senior Citizens
- Animal Safety
- Animal Testing
- Bereavement
- Biochemistry
- Biology
- Biomedical Technology
- Botox
- Brain Disorder
- Breast Cancer
- Breast Surgery
- Breastfeeding
- Cardiology
- Child Abuse
- Child Trafficking
- Children & Youth at Risk
- Chronic Pain
- Commercial Gestational Surrogacy
- Community Support
- Consumerism
- Counterfeit Medication
- Covid-19 Pandemic
- Criminal Justice System
- Death & Grief
- Death of a Child
- Depression
- Diagnoses
- Digital Programs
- Disabilities
- Discrimination
- Domestic Violence
- Drug Overdose
- Economic Security
- Education
- Emergency Services
- Environment
- Ethics
- Evolution
- Exploitation
- Family & Parenting
- Family Issues
- FDA Regulations
- Federal Drug Regulations
- Football
- Formula Shortage
- Gender Issues
- Grief Counseling
- Head Trauma
- Health Care
- Heart Defects
- Illegal Pharmacies
- Immunization
- Incarceration
- Inmate Safety
- Insurance
- Interpersonal Relationships
- Intervention & Harm Reduction
- Invasive Treatment
- Jails & Prisons
- Legislation & Policy
- Maltreatment
- Medical Debt
- Medical Innovation
- Medical Mysteries
- Medical Technology
- Mental Health
- Mental Health Diagnoses
- Mental Illness
- Mental Wellness Applications
- Mining
- Minority Issues
- Mother Safety
- Mouse Studies
- Natural Resources
- Neurology & Neuroscience
- Nicotine Use
- Non-invasive Treatment
- Overactive Bladder
- Pain Management
- Parenting & Parenting Issues
- Patient Safety
- Personal Information
- Pharmaceutical Companies & Pharmaceutical Research
- Pollution
- Pregnancy & Expecting Mothers
- Pregnancy Complications
- Prevention
- Prison Reform
- Private & Public Prisons
- Prolonged Grief
- Psychology
- Public Health
- Public Safety
- Racism & Discrimination
- Rare Conditions
- Rehabilitation
- Reproduction
- Research and Research Models & Methods
- Safety in Sports
- Skin Cancer
- Skin Damage
- Skin Safety
- State & Federal Regulations
- State Government & Legislation
- Substance & Drug Abuse
- Suicide
- Sun Exposure
- Systemic Racism
- Technology
- Therapy
- Traumatic Loss
- Vaginal Rejuvenation
- Vaping
- Venomous Animals & Venomics
- Virtual Reality
- Virtual Therapeutics
- Vulnerable populations
- Women at Risk

Program 22-14

Air Week: 4/3/22

Executive Producer: Amirah Zaveri

Production Manager: Jason Dickey

SEGMENT 1: HAVE PRIVATE PRISONS BECOME THE SCAPEGOAT FOR A LARGER ISSUE?

Time: 1:50

Duration: 12:33

Synopsis: Private prisons seemed to be the answer to America's overpopulated prisons in the 1980s. It's since become a controversial topic of debate. Experts discuss if the problem is with private prisons, or with our country's incarceration system as a whole.

Host: Reed Pence

Producer: Kristen Farrah

Guests: Sharon Dolovich, Professor of Law, UCLA, Director of the Prison Law and Policy Program, UCLA, Director of Covid-19 Behind Bars Project, UCLA; Sen. Robert Peters, State Senator, 13th District in Illinois; Alexandra Wilkes, National Spokeswoman, Day One Alliance; Rep. Jack McFarland, State Representative, 13th District in Louisiana

Compliance issues: State Government and Legislation, Inmate Safety, Criminal Justice System, Prison Reform, Public Safety, Mental Health, Private and Public Prisons, Prison and Criminal Justice, Incarceration, Legislation and Policy, Jails and Prisons, Rehabilitation, Ethics

Links for more info:

[Sharon Dolovich \(@SharonDolovich\)](#) / Twitter

[Sharon Dolovich](#) | Media Guide to UCLA Experts

[COVID Behind Bars Data Project](#) | UCLA Law

[Illinois State Senator Robert Peters](#)

[State Senator Robert Peters \(@senpetersil\)](#) / Twitter

[Alex Wilkes \(@AlexandraWilkes\)](#) / Twitter

[Day 1 Alliance](#)

[Jack G. McFarland](#) – Louisiana House of Representative

[Jack McFarland \(@RepMcFarland\)](#) / Twitter

SEGMENT 2: A LOOK AT THE NEW, NON-INVASIVE TREATMENT FOR ESSENTIAL TREMOR

Time: 15:25

Duration: 7:42

Synopsis: Essential Tremor has always been treated by medication that's not guaranteed to work, or brain surgery. A doctor explains the new, non-invasive treatment that can help those suffering with ET.

Host: Nancy Benson

Producer: Kristen Farrah

Guests: Dr. Rees Cosgrove, Director of Epilepsy and Functional Neurosurgery, Brigham and Women's Hospital; Jack Weingart, suffers from Essential Tremor

Compliance issues: Public Health, Medical Technology, Brain Disorder, Non-invasive Treatment, Consumerism

Links for more info:

Garth Rees Cosgrove, MD – Brigham and Women's Hospital

Program 22-15

Air Week: 4/10/22

Executive Producer: Amirah Zaveri

Production Manager: Jason Dickey

SEGMENT 1: ARE YOU ADDICTED TO LOVE?

Time: 1:50

Duration: 11:40

Synopsis: Researchers have discovered that love is a natural addiction. It lights up the same part of our brain that substance addiction does. We need to eat, we need to sleep, and we need to love. Experts discuss how love affects our brain and why we need it for our survival.

Host: Reed Pence

Producer: Kristen Farrah

Guests: Dr. Helen Fisher, Biological Anthropologist, Senior Research Fellow, The Kinsey Institute; Dr. Lucy Brown, Clinical Professor in Neurology, Albert Einstein College of Medicine; Dr. Bianca Acevedo, Researcher, University of California, Santa Barbara

Compliance issues: Biology, Neurology, Interpersonal Relationships, Mental Health, Evolution, Education, Addiction and Substance Abuse, Neuroscience, Psychology, Reproduction

Links for more info:

[Bianca Acevedo, PhD Author – Speaker – Scientist](#)

[Helen Fisher, PhD](#)

[The Anatomy of Love](#)

[Amazon.com: Helen E. Fisher: Books, Biography, Blog, Audiobooks, Kindle](#)

[Lucy L. Brown, Ph.D. | Faculty Directory | Albert Einstein College of Medicine](#)

SEGMENT 2: THE LASER TREATMENT THAT HARMS BREAST CANCER PATIENTS

Time: 14:32

Duration: 8:25

Synopsis: Just because it's FDA-approved, doesn't mean it's necessarily safe. A vaginal rejuvenation laser treatment has been accused of targeting breast cancer patients and not upholding its promises. An expert reveals how this treatment can cause worse harm and chronic pain to breast cancer patients.

Host: Nancy Benson

Producer: Kristen Farrah

Guests: Dr. Kristin Rojas, Board-Certified Gynecologist, Breast Cancer Surgeon, Sylvester Comprehensive Cancer Center at the University of Miami; Nancy, Breast Cancer Survivor, Victim of Vaginal Rejuvenation Treatment

Compliance issues: Public Health, Vulnerable populations, Women at Risk, FDA Regulations, Invasive Treatment, Breast Cancer, Vaginal Rejuvenation, Consumerism, Chronic Pain, Patient Safety

Links for more info:

[Kristin Rojas MD](#)

[Kristin E. Rojas MD, FACS, FACOG \(@kristinrojasmd\) / Twitter](#)

[Kristin E. Rojas MD, FACS \(@kristinrojasmd\) • Instagram photos and videos](#)

[Kristin E. Rojas, MD | University of Miami Health System](#)

Program 22-16

Air Week: 4/17/22

Executive Producer: Amirah Zaveri

Production Manager: Jason Dickey

SEGMENT 1: HOW HARM REDUCTION SERVICES HELP REDUCE RATES OF DRUG OVERDOSE

Time: 1:51

Duration: 12:11

Synopsis: The CDC reports May 2020 through April 2021 saw the most drug overdose deaths ever recorded in a single year. These deaths put into question how effective America’s efforts to reduce drug use have been. Experts discuss the use of harm reduction services and why drug addiction is a mental health issue.

Host: Reed Pence

Producer: Kristen Farrah

Guests: Regina LaBelle, Initiative Director, The Addiction and Public Policy Initiative at Georgetown University; Dr. Trent Hall, Assistant Professor of Addiction Medicine, The Ohio State University

Compliance issues: Mental Health, Public Health, Addiction and Substance Abuse, Substance and Drug Abuse, Rehabilitation, Drug Overdose, Children and Youth at Risk, Intervention and Harm Reduction, Health Care, Vulnerable populations

Links for more info:

[Regina LaBelle – O’Neill](#)

[Regina LaBelle \(@ReginaLabelle\) / Twitter](#)

[Assessment of Excess Mortality Associated With Drug Overdose in Ohio From 2009 to 2018 | Toxicology](#)

[JAMA Network Open](#)

[Orman Trent Hall DO | Ohio State University Wexner Medical Center](#)

SEGMENT 2: HOW SYSTEMIC RACISM FEEDS INTO LOW QUALITY HEALTH CARE

Time: 15:04

Duration: 7:55

Synopsis: As a black mother, Taylor Harris worries her child will be treated differently by medical professionals. A recent study reveals that some medical students believe pain thresholds vary by race. Dr. Ana Pujols McKee speaks on how proper education can help fix systemic racism in health care.

Host: Nancy Benson

Producer: Polly Hansen

Guests: Taylor Harris, Mother and Author; Dr. Ana Pujols McKee, Executive Vice President, The Joint Commission, Chief Medical Officer, The Joint Commission; Chief Diversity Equity and Inclusion Officer, The Joint Commission

Compliance issues: Health Care, Systemic Racism, Discrimination, Minority Issues, Patient Safety, Racism and Discrimination

Links for more info:

[TAYLOR HARRIS](#)

[Taylor Harris \(@tharris\) / Twitter](#)

[Taylor Harris \(@writingforicecreamduh\) • Instagram photos and videos](#)

[Ana Pujols McKee | The Joint Commission](#)

Program 22-17

Air Week: 4/24/22

Executive Producer: Amirah Zaveri

Production Manager: Jason Dickey

SEGMENT 1: HOW DID THE PANDEMIC AFFECT CHILD ABUSE?

Time: 1:51

Duration: 11:16

Synopsis: History has shown that financial stress increases rates of child abuse. As millions lost their jobs in 2020, experts feared for the worst. This week on RHJ - two medical experts who specialize in studying and uncovering child abuse discuss the contradicting evidence of how the pandemic affected rates of child maltreatment.

Host: Reed Pence

Producer: Kristen Farrah

Guests: Dr. Robert Sege, Director of the Center for Community-Engaged Medicine, Tufts Medical Center, Child Abuse Pediatrician, Tufts Medical Children’s Hospital; Ashley Rapp, Epidemiologist, Henry Ford Health System

Compliance issues: Maltreatment, Public Safety, Parenting Issues, Economic Security, Children and Youth at Risk, Parenting, Vulnerable populations, Public Health, Family and Parenting, Family Issues, Child Abuse

Links for more info:

[Robert Sege, MD, PhD](#)

[Dr. Bob Sege \(@BobSegeMD\) / Twitter](#)

[ashley rapp \(@ashleyrappmph\) / Twitter](#)

[Ashley Rapp – LinkedIn Page](#)

SEGMENT 2: REDUCING THE HARMFUL EFFECTS OF LITHIUM MINING

Time: 14:09

Duration: 8:23

Synopsis: Traditional lithium mining can ruin the surrounding environment, posing a risk to the health of local communities and wildlife. As production for a new mine in Nevada gears up, the company behind the project reveals how they're reducing the public health threats of lithium mining. A mining critic talks about how the new mine will operate and why he believes its construction is essential.

Host: Nancy Benson

Producer: Kristen Farrah

Guests: Dr. Glenn Miller, Semi-Retired Professor and Co-Chair of the Department of Natural Resources and Environmental Science, University of Nevada-Reno; Marko Paunović, former Serbian citizen

Compliance issues: Ethics, Consumerism, Environment, Natural Resources, Public Health, Mining

Links for more info:

[Glenn Miller | Dept. of Natural Resources & Environmental Science | University of Nevada, Reno](#)

[Thacker Pass](#)

Program 22-18

Air Week: 5/1/22

Executive Producer: Amirah Zaveri

Production Manager: Jason Dickey

SEGMENT 1: WHEN DOES GRIEF BECOME A DISORDER?

Time: 1:50

Duration: 11:40

Synopsis: Everyone grieves differently, but some can become completely debilitated by their sorrow for years. The American Psychiatric Association recently recognized this type of grief as a diagnosis called prolonged grief disorder. One doctor behind the decision talks about how this will help people find a way out of that cycle of grieving.

Host: Reed Pence

Producer: Kristen Farrah

Guests: Dr. Paul Appelbaum, Professor of Psychiatry, Columbia University, Chair of the Steering Committee, Diagnostic and Statistical Manual of Mental Disorders; Dr. Holly Prigerson, Professor of Geriatrics, Cornell University; Dr. Joanne Cacciatore, Associate Professor in the School of Social Work, Arizona State University, Traumatic Loss Expert

Compliance issues: Death and Grief, Mental Health Diagnoses, Vulnerable populations, Public Health, Mental Health, Traumatic Loss, Prolonged Grief

Links for more info:

[Paul S. Appelbaum, MD | Columbia University Department of Psychiatry](#)

[Paul Appelbaum \(@appelbap\) / Twitter](#)

[Holly G. Prigerson | Cornell Research](#)

[Joanne Cacciatore \(@dr_cacciatore\) / Twitter](#)

[Selah Carefarm | Animal Grief Therapy for Bereaved Families](#)

[Joanne Cacciatore | School of Social Work](#)

SEGMENT 2: CTE: THE MYSTERIOUS BRAIN DISORDER THAT'S TAKEN OVER THE NFL

Time: 14:32

Duration: 8:27

Synopsis: Chronic Traumatic Encephalopathy is a progressive brain disorder that can only be diagnosed after death. The condition is caused by repeated head trauma, but much of CTE is still a mystery. Dr. Michael Alosco discusses who he thinks is most at risk and the various obstacles researchers face while studying CTE.

Host: Nancy Benson

Producer: Kristen Farrah

Guests: Dr. Michael Alosco, Associate Professor of Neurology at Boston University School of Medicine, Lead Investigator at Boston University's CTE Center

Compliance issues: Safety in Sports, Football, Neuroscience, Head Trauma, Vulnerable populations, Brain Disorder, Public Health, Mental Health

Links for more info:

[Michael Alosco | CTE Center](#)

[Clinicopathological Evaluation of Chronic Traumatic Encephalopathy in Players of American Football |](#)

[JAMA](#)

[Evaluation of Chronic Traumatic Encephalopathy in Football Players | Neurology | JN Learning | AMA Ed](#)

[Hub](#)

Program 22-19

Air Week: 5/8/22

Executive Producer: Amirah Zaveri

Production Manager: Jason Dickey

SEGMENT 1: TETRALOGY OF FALLOT AND THE INCREDIBLE STORY OF A LIFE-SAVING SURGERY

Time: 1:50

Duration: 11:27

Synopsis: Tetralogy of Fallot is a rare heart condition that usually requires at least one open-heart surgery. However, two new self-expanding valves give up to 80 percent of patients the option of a catheterization procedure instead of surgery. Dr. Jeff Zampi explains how important this advancement is for patients with TOF.

Host: Reed Pence

Producer: Kristen Farrah

Guests: Dr. Jeff Zampi, Associate Professor of Pediatric Cardiology, University of Michigan, Director of Interventional Pediatric Cardiology, C.S. Mott Children's Hospital; Dr. Danielle Gottlieb Sen, Pediatric Cardiac Surgeon and Assistant Professor of Surgery, Johns Hopkins University; Latisha Wilborne, mother of TOF patient

Compliance issues: Medical Innovation, Rare Conditions, Children and Youth at Risk, Heart Defects, Cardiology

Links for more info:

[Jeffrey Dominick Zampi MD | CS Mott Children's Hospital | Michigan Medicine](#)

[Danielle Gottlieb Sen, MD, MPH, MS, Assistant Professor of Surgery | Johns Hopkins Medicine](#)

[A Heart Like Bella's Paperback – Wilborne, Latisha M](#)

SEGMENT 2: CAN YOU TRUST YOUR ONLINE PHARMACY?

Time: 14:19

Duration: 8:42

Synopsis: Experts estimate that only four percent of online pharmacies are legitimate. The rest are counterfeit operations that prey on customers by selling falsified medications. A scientist reveals a new technology that puts the power back into consumers' hands.

Host: Nancy Benson

Producer: Kristen Farrah

Guests: Dan Burke, Chief of Cyber Operations in the Office of Criminal Investigations, FDA; Dr. Young Kim, Associate Professor of Biomedical Engineering, Purdue University

Compliance issues: Criminal Justice System, Public Health, Counterfeit Medication, Consumerism, Biomedical Technology, Federal Drug Regulations, Illegal Pharmacies, Public Safety

Links for more info:

[Young Kim – Biomedical Engineering – Purdue University](#)

[Kim, Young L | Purdue OTC](#)

[Cyber Physical Watermarking with Inkjet Edible Bioprinting – Advanced Functional Materials – Wiley](#)

[I Am ORA Profile: Dan Burke | FDA](#)

Program 22-20

Air Week: 5/15/22

Executive Producer: Amirah Zaveri

Production Manager: Jason Dickey

SEGMENT 1: SHOULD YOU ALWAYS TRUST YOUR MENTAL HEALTH DIAGNOSIS?

Time: 1:50

Duration: 13:22

Synopsis: Sarah Fay was misdiagnosed six times throughout her life. Starting at age 12, Fay has battled with inaccurate and inadequate diagnoses that unfortunately shaped how she viewed herself. Fay details her journey and extensive research into mental health diagnoses in her new book Pathological.

Host: Reed Pence

Producer: Kristen Farrah

Guests: Sarah Fay, author of Pathological: The True Story of Six Misdiagnoses and Mental Health Advocate, Pathological: The Movement

Compliance issues: Mental Illness, Pharmaceutical Companies, Public Health, Diagnoses, Consumerism, Psychology, Mental Health

Links for more info:

[Sarah Fay](#)

[Pathological: The Movement](#)

[Sarah Fay \(@sarahfayauthor\) / Twitter](#)

SEGMENT 2: WHAT CAN WE ACTUALLY LEARN FROM ANIMAL STUDIES?

Time: 16:14

Duration: 6:53

Synopsis: In research, scientists aim to create an environment that reflects humans as closely as possible. Many times, these models are found in mice. But how accurate are mice at showing what will happen in humans? Dr. Donna Arnett discusses what we should keep in mind when reading about mice studies.

Host: Nancy Benson

Producer: Kristen Farrah

Guests: Dr. Donna Arnett, Dean of the College of Public Health, University of Kentucky; Dr. Loren Wold, Professor of Nursing and Medicine, The Ohio State University, Associate Dean for Research Operations and Compliance, The Ohio State University; Dr. Neal Benowitz, Professor of Medicine Emeritus, University of California, San Francisco

Compliance issues: Nicotine Use, Children and Youth at Risk, Vulnerable populations, Animal Testing, Vaping, Research Methods, Research, Mouse Studies, Research Models

Links for more info:

[Donna K. Arnett | UK College of Public Health](#)

[Donna K. Arnett, Dean \(@Donnakarnett\) / Twitter](#)

[Loren E. Wold | The Ohio State University College of Nursing](#)

[The Wold Lab \(@TheWoldLab\) / Twitter](#)

[Neal Benowitz | UCSF Profile](#)

Program 22-21

Air Week: 5/22/22

Executive Producer: Amirah Zaveri

Production Manager: Jason Dickey

SEGMENT 1: DOMESTIC VIOLENCE: THE TRAGIC SIDE-EFFECT OF STAY-AT-HOME ORDERS

Time: 1:50

Duration: 12:22

Synopsis: While stay-at-home orders were great for slowing the spread of Covid, they essentially trapped victims with their abusers. As numbers of domestic violence reports rose, women’s shelters were overwhelmed with people in need of safe housing. One shelter employee discusses the challenges in helping the growing number of victims.

Host: Reed Pence

Producer: Kristen Farrah

Guests: Dr. Alex Henke, Assistant Professor of Economics, Howard University; Melanie Asher, Children’s Program Coordinator, Saint Martha’s Hall

Compliance issues: Vulnerable populations, State and Federal Regulations, Women at Risk, Children and Youth at Risk, Covid-19 Pandemic, Domestic Violence, Public Safety, Abuse

Links for more info:

[COVID-19, staying at home, and domestic violence | SpringerLink](#)

[Alex Henke \(@Henkenomics\) / Twitter](#)

[Alex Henke](#)

[St. Martha’s Hall](#)

SEGMENT 2: NO SURPRISES ACT: NEW LAW PROTECTS PATIENTS FROM SURPRISE MEDICAL BILLS

Time: 15:14

Duration: 7:26

Synopsis: Surprise medical bills are payments you believe are covered by insurance, but ultimately land back on you. The No Surprises Act protects patients from having to pay for emergency services at out-of-network facilities and other similar situations. Katie Keith describes why this law is necessary to protect patients.

Host: Nancy Benson

Producer: Kristen Farrah

Guests: Katie Keith, Associate Research Professor, Center on Health Insurance Reforms at Georgetown University

Compliance issues: Public Health, Vulnerable populations, Health Care, Insurance, Emergency Services, Patient Safety, Medical Debt

Links for more info:

[Katie Keith, JD, MPH | Center on Health Insurance Reforms | Georgetown University](#)

[Katie Keith \(@Katie_Keith\) / Twitter](#)

[No Surprises: Understand your rights against surprise medical bills | CMS](#)

Program 22-22

Air Week: 5/29/22

Executive Producer: Amirah Zaveri

Production Manager: Jason Dickey

SEGMENT 1: EMPTY NOSE SYNDROME: WHEN A ROUTINE NOSE SURGERY GOES WRONG

Time: 1:50

Duration: 12:43

Synopsis: Empty Nose Syndrome is a rare condition that can develop after some of the most common nose procedures. Those affected are left in a constant feeling of suffocation – and there’s no cure. An ENS sufferer describes his experience living with the condition.

Host: Reed Pence

Producer: Kristen Farrah

Guests: Dr. Brent Senior, Chief of Rhinology, Allergy, and Endoscopic Skull Base Surgery, University of North Carolina – Chapel Hill; James R. Skinner, ENS patient

Compliance issues: Consumerism, Rare Conditions, Mental Health, Medical Mysteries, Prevention, Patient Safety, Disabilities, Vulnerable populations, Public Health

Links for more info:

[Brent A. Senior, MD, FACS, FARS | UNC Otolaryngology/Head and Neck Surgery](#)

[Brent Senior \(@ProfBrentSenior\) / Twitter](#)

[@iskinner / Twitter](#)

[James R. Skinner’s Empty Nose Syndrome Story | Nasal Cripple](#)

[Nasal Damage \(ENS\) Investigated – James R. Skinner](#)

SEGMENT 2: WHY DO ELDERLY MEN HAVE THE HIGHEST RATE OF SUICIDE?

Time: 15:35

Duration: 6:57

Synopsis: It's long been the case that men over 70 have the highest rate of suicide. This demographic is more likely to complete their first attempt than any other age group. Dr. Carrie Ditzel discusses some possible reasons as to what's driving elderly men to take their own lives.

Host: Nancy Benson

Producer: Kristen Farrah

Guests: Dr. Carrie Ditzel, Clinical Psychologist, Baker Street Behavioral Health

Compliance issues: Gender Issues, Suicide, Aging and Senior Citizens, Mental Health, Depression, Prevention, Public Safety, Vulnerable populations, Public Health

Links for more info:

[Baker Street Behavioral Health | About](#)

[Disparities in Suicide | CDC](#)

Program 22-23

Air Week: 6/5/22

Executive Producer: Amirah Zaveri

Production Manager: Jason Dickey

SEGMENT 1: HOW TO PROVIDE SUPPORT IN THE WAKE OF A TRAUMATIC LOSS

Time: 1:50

Duration: 12:54

Synopsis: It can be difficult to figure out how to comfort someone dealing with a traumatic loss. Often, there's a fear of not knowing what to say, which can leave the grieving person feeling more alone. Two bereaved mothers recount their experiences of losing their children, and detail what good support looks like.

Host: Reed Pence

Producer: Kristen Farrah

Guests: Dr. Joanne Cacciatore, Traumatic Loss Expert, The MISS Foundation; Liz Castleman, bereaved mother; Jesse Zilberstein, bereaved mother

Compliance issues: Bereavement, Grief Counseling, Death and Grief, Traumatic Loss, Death of a Child, Community Support

Links for more info:

[Center for Loss and Trauma](#)

[MISS Foundation](#)

[Gidi's Kindness Project](#)

[Gidi's Kindness Project – Facebook Page](#)

[Selah Carefarm | Animal Grief Therapy for Bereaved Families](#)

SEGMENT 2: NOT JUST FOR WRINKLES: HOW BOTOX CAN TREAT YOUR OVERACTIVE BLADDER

Time: 15:46

Duration: 6:40

Synopsis: Though now known for its anti-aging effects, Botox was first used to manage medical conditions like hyperhidrosis and migraines. Today, doctors are also using Botox to treat overactive bladder symptoms, a condition that plagues over 30 million Americans according to the National Association for Continence. A specialist discusses the benefits of the procedure.

Host: Nancy Benson

Producer: Kristen Farrah

Guests: Dr. Karyn Eilber, Professor of Urology, Associate Professor of Obstetrics and Gynecology, Cedars-Sinai Medical Center

Compliance issues: Consumerism, Botox, Patient Safety, Public Health, Overactive Bladder

Links for more info:

[Karyn S. Eilber, MD – Cedars-Sinai Medical Center Directory](#)

[BOTOX® treatment for OAB](#)

Program 22-24

Air Week: 6/12/22

Executive Producer: Amirah Zaveri

Production Manager: Jason Dickey

SEGMENT 1: WOMBS FOR RENT: THE LEGALIZATION OF COMMERCIAL SURROGACY

Time: 1:50

Duration: 12:36

Synopsis: Commercial gestational surrogacy allows parents to have a biological child that's carried and birthed by another woman who receives a salary. Though many countries have outlawed commercial surrogacy, states in America are beginning to legalize it. Experts weigh in on the ethical implications of commercialized surrogacy.

Host: Reed Pence

Producer: Kristen Farrah

Guests: Taina Bien-Aimé, Executive Director, Coalition Against Trafficking in Women; Dr. Linda Kahn, Assistant Professor, NYU Grossman School of Medicine; Ashley Mareko, Surrogate Program Director, Surrogate First, Surrogate Mother

Compliance issues: Exploitation, Pregnancy and Expecting Mothers, Public Health, Pregnancy Complications, Child Trafficking, Public Safety, Commercial Gestational Surrogacy, Children and Youth at Risk, Surrogacy, Family Issues, Women at Risk

Links for more info:

[Our Surrogacy Team – Why Choose SurrogateFirst](#)

[Coalition Against Trafficking in Women](#)

[Taina Bien-Aimé – Executive Director – Coalition Against Trafficking in Women \(CATW\) | LinkedIn](#)

[Linda G. Kahn, MPH, PhD](#)

[The Child-Parent Security Act: Gestational Surrogacy](#)

[Weareggdonors.com](#)

SEGMENT 2: BREASTFEEDING MAY BE NATURAL, BUT THAT DOESN'T MEAN IT'S EASY

Time: 15:28

Duration: 7:00

Synopsis: Mothers across the nation panicked when a major recall and supply chain issues caused a baby formula shortage. One response to the shortage told women to 'just start breastfeeding again,' but Dr. Karen Federici explains why that's not as simple as it sounds.

Host: Nancy Benson

Producer: Kristen Farrah

Guests: Dr. Karen Federici, Breastfeeding Medicine Specialist, Northwestern Medicine Kishwaukee Hospital; Dr. Susan Landers, Retired Neonatologist; Lesley Mondeaux, Executive Director, Northwest Mothers Milk Bank

Compliance issues: Breastfeeding, Public Health, Breast Surgery, Vulnerable populations, Formula Shortage, Mother Safety, Children and Youth at Risk

Links for more info:

[Family First – Women & Children's Healthcare](#)

[Karen M. Federici, MD | Northwestern Medicine](#)

[Health & Wellness | A Healthier You by Dr Karen Federici](#)

[Susan Landers, MD](#)

[Susan Landers, MD \(@susanlandersmd\) / Twitter](#)

[Our Mission - donatemilk.org](#)

[Human Milk Banking Association of North America](#)

Program 22-25

Air Week: 6/19/22

Executive Producer: Amirah Zaveri

Production Manager: Jason Dickey

SEGMENT 1: WHAT HAPPENS WHEN MEDICINE MEETS THE METAVERSE?

Time: 1:50

Duration: 11:10

Synopsis: Doctors can now treat chronic pain with the technology of virtual reality. Patient Tom Norris joins us to share his experience using a VR headset in place of sedatives when doctors removed three tumors from his bladder. Dr. Brennan Spiegel at Cedars-Sinai Medical Center reveals how VR treatment works and how virtual therapeutics will revolutionize medicine.

Host: Reed Pence

Producer: Kristen Farrah

Guests: Dr. Brennan Spiegel, Director of Health Services Research, Cedars-Sinai Medical Center, author; Tom Norris, VR Therapy Patient

Compliance issues: Virtual Therapeutics, Mental Health, Psychology, Virtual Reality, Health Care, Medical Technology, Pain Management, Technology, Chronic Pain, Consumerism, Public Health

Links for more info:

[Brennan M. Spiegel, MD, MSHS – Cedars-Sinai Medical Center Directory](#)

[Brennan Spiegel, MD, MSHS \(@BrennanSpiegel\) / Twitter](#)

[VRx by Brennan Spiegel | Basic Books](#)

[Tom Norris \(@itomnorris\) / Twitter](#)

SEGMENT 2: WHY DOCTORS SAY A "HEALTHY TAN" DOESN'T EXIST

Time: 14:02

Duration: 8:38

Synopsis: Summer's finally here, which means enjoying popsicles and pool days. But if you've been waiting all year for a summer tan, you may want to rethink that plan. Even a 'healthy glow' means our cells have already been damaged, and the sun isn't the only problem. Dr. Shadi Kourosh discusses how factors like air pollution and digital screens can also harm our skin.

Host: Nancy Benson

Producer: Kristen Farrah

Guests: Dr. Shadi Kourosh, Director of Community Health for Dermatology, Mass General Brigham

Compliance issues: Public Health, Patient Safety, Skin Safety, Pollution, Sun Exposure, Skin Damage, Technology, Skin Cancer

Links for more info:

[Shadi Kourosh, MD, MPH](#)

[Arienne Shadi Kourosh, MD, MPH \(@dr.shadi_derm\) • Instagram photos and videos](#)

[A. Shadi Kourosh, MD, MPH \(@DrShadi_\) / Twitter](#)

Program 22-26

Air Week: 6/26/22

Executive Producer: Amirah Zaveri

Producers: Kristen Farrah, Grace Galante

Production Manager: Jason Dickey

SEGMENT 1: VENOM: A LETHAL WEAPON OR MEDICAL MIRACLE?

Time: 1:50

Duration: 12:37

Synopsis: Researchers have discovered how to use evolution's deadliest and oldest weapon for good. But how can scientists create medicine from lethal venom? Dr. Leslie Boyer reveals the entire process and explains why horses are so valuable to the research.

Host: Reed Pence

Producer: Kristen Farrah

Guests: Dr. Leslie Boyer, Professor Emerita of Pathology, University of Arizona

Compliance issues: Biochemistry, Pharmaceutical Research, Public Safety, Venomics, Public Health, Venomous Animals, Venom, Immunization, Research Methods, Animal Safety

Links for more info:

[Leslie V Boyer | BIO5 Institute](#)

[LeslieBoyerMD](#)

[Leslie Boyer MD \(@lvboyer_md\) / Twitter](#)

SEGMENT 2: CAN WELLNESS APPS ACTUALLY IMPROVE YOUR HEALTH?

Time: 15:29

Duration: 7:26

Synopsis: The World Health Organization reports a 25% global increase in anxiety and depression throughout the pandemic. During the same time, the mental health app industry skyrocketed. But how helpful are these programs? Dr. Stephanie Collier discusses the dangers of using these apps, many of which have no scientific evidence of successfully treating mental health.

Host: Nancy Benson

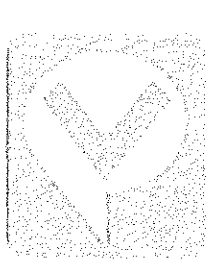
Producer: Kristen Farrah

Guests: Dr. Stephanie Collier, Director of Education in the Division of Geriatric Psychiatry, McLean Hospital

Compliance issues: Digital Programs, Public Safety, Therapy, Public Health, Mental Wellness Applications, Mental Health, Health Care, Personal Information, Psychology

Links for more info:

[Stephanie Collier, MD, MPH | McLean Hospital](#)



VIEWPOINTS
RADIO

WEEF SUN 7:00am
WKTA TUES 4:30am
WPJX SUN 6:00am

About Viewpoints

Viewpoints is an entertaining, highly produced, contemporary radio magazine with two major stories weekly. Each week, *Viewpoints* features interviews with guests that have expertise and real-world experience regarding current events, social commentary, entertainment and more. The program is currently airing on over 650 radio stations throughout the country.

Meet the hosts

Marty Peterson

Marty became co-host of *Viewpoints* in 2008 and brings a unique background to the program. After earning a bachelor's degree from Dartmouth College and an MBA from Northwestern University, Marty entered the broadcast field in 2003, and since then has done numerous projects for outlets including National Geographic, The History Channel and the Weather Channel. She also serves on the Women's Board of a variety of non-profit organizations including the Field Museum, the Lincoln Park Zoo, and Northwestern University.

Gary Price

Viewpoints co-host Gary Price is a veteran radio programmer and voice-over talent. He has been the program director of legendary stations such as WOKY Milwaukee and Chicago's WLS-FM, WCFL, WTMX, and WMET, as well as operations director for Infinity's WJJD-WJMK. Recently, Gary has done numerous projects for outlets including the United Nations, NASA, the Smithsonian Institution, and the New York Stock Exchange.

Quarterly Report of Compliancy Issues & Programs List 2022-Q2 (April - June) Viewpoints Radio

- Addiction & Addiction Treatment
- Adolescent Health
- Agriculture
- Architecture
- Arts
- Business & Business Management
- Career
- Charitable Giving
- Child Development
- Climate Change
- Climate Science
- Commerce
- Communication
- Conflict
- Consumerism
- Culture
- Disease
- Economy
- Economics
- Education
- Endangered Species
- Energy Production
- Entrepreneurship
- Environment
- Epidemiology
- Equality
- Fair Wages
- Farming
- Fashion
- Film
- Finance
- Food & Food Production
- Gaming
- Generational Inequality
- Global Issues
- Global Trade
- Government
- Health
- Higher Education
- History
- Hobby
- Home Improvement
- Human Resources
- Humanitarian Aid
- Immigration
- Inequality
- Information Technology
- Labor Rights & Labor Relations
- Land Development
- Language
- Law
- Literature
- Manufacturing
- Media
- Medical Research
- Mental Health
- Mining
- Motherhood
- Music
- Natural Resources
- Ocean Science
- Opioid Epidemic
- Parenting
- Personal Finance
- Personal Growth & Development
- Politics
- Pollution
- Poverty
- Professional Development
- Psychiatry
- Psychology
- Public Health
- Public Service
- Refugee Crisis
- Relationships
- Science
- Social Media
- Streaming
- Sustainability
- Technology
- Tourism
- Travel
- TV
- Urban Planning
- War
- Wealth Inequality
- Wildlife Protection
- Workers' Rights

Program 22-14**Air Date:** 4/3/22**Executive Producer:** Amirah Zaveri**Production Manager:** Jason Dickey**SEGMENT 1: RETHINKING WORK****Time:** 1:47**Duration:** 10:49

Synopsis: As the pandemic winds down and millions get back to a more normal routine, some employers are mandating for workers to return to the traditional office environment. But – some are pushing back, wondering why it's necessary to go back in if they can do the same tasks from home. Dr. Lynda Gratton breaks down how work has been forever changed by COVID-19 and the new models and technology that have taken hold instead of the traditional, in-person Monday-Friday routine.

Host: Gary Price**Producer:** Amirah Zaveri

Guests: Lynda Gratton, professor, management practice, London Business School; author of *Redesigning Work: How to Transform Your Organization and Make Hybrid Work for Everyone*.

Compliance issues: Career, Business Management, Human Resources, Technology

Links for more info:

Lynda Gratton | London Business School

Lynda Gratton (@lyndagrattton) / Twitter

Why It's So Hard to Keep and Recruit Employees Right Now

Goldman Sachs wants workers in office 5 days a week and other companies could follow – CNBC

SEGMENT 2: THE COMMUNICATION SIGNALS WE SEND**Time:** 14:38**Duration:** 9:48

Synopsis: All the signals we send, from the words we use to the gestures we make, form an impression on the people we interact with every day. Human behavior researcher Vanessa Van Edwards joins us this week to share some insight on the many different signal cues out there and how to put them into use to improve your communication skills.

Host: Marty Peterson**Producer:** Amirah Zaveri

Guests: Vanessa Van Edwards, human behavior researcher, author of *Cues: Master the Secret Language of Charismatic Communication*

Compliance issues: Language, Relationships, Psychology, Communication

Links for more info:

Cues by Vanessa Van Edwards | PenguinRandomHouse.com: Books

Vanessa Van Edwards (@vvanedwards) / Twitter

CULTURE CRASH: THE END OF BETTER CALL SAUL**Time:** 24:26**Duration:** 2:00**Synopsis:** Better Call Saul starring actor Bob Odenkirk is coming to an end after six seasons. We discuss how the spinoff of Breaking Bad carved out a name for itself with a strong storyline and stellar performances.**Host:** Evan Rook**Producer:** Evan Rook**Compliance issues:** TV, Culture

Program 22-15**Air Date:** 4/10/22**Executive Producer:** Amirah Zaveri**Production Manager:** Jason Dickey**SEGMENT 1: EXPLORING INNOVATIONS IN ADDICTION TREATMENT****Time:** 1:47**Duration:** 10:25

Synopsis: In the U.S., current overdose deaths of heroin, fentanyl and prescription opioids have increased over six times from rates seen in 1999, according to the CDC. With the opioid epidemic raging on into 2022, what's on the forefront of treatment research when it comes to better tackling substance use disorders? Dr. Anna Rose Childress, a professor and psychiatrist at the University of Pennsylvania Perelman School of Medicine, joins us this week to break down the decades-long epidemic, the challenges of treating addiction and share some new innovations in clinical research.

Host: Gary Price**Producer:** Amirah Zaveri

Guests: Dr. Anna Rose Childress, research professor, Department of Psychiatry, University of Pennsylvania Perelman School of Medicine, director, brain behavioral vulnerabilities division, Center for Studies on Addiction, University of Pennsylvania Perelman School of Medicine

Compliance issues: Science, Addiction, Mental Health, Opioid Epidemic, Addiction Treatment, Medical Research

Links for more info:

Anna Rose Childress | Faculty | Department of Psychiatry | Perelman School of Medicine at the University of Pennsylvania

SAMHSA

FindTreatment.gov

SEGMENT 2: THE EARLY HISTORY OF THE KENNEDY'S**Time:** 14:14**Duration:** 9:27

Synopsis: Many would argue that the Kennedy family is an American cultural and political dynasty. From former President John F. Kennedy to past Kennedy's that have served as senators, ambassadors and in other high-ranking government positions, the name today still signifies power and prestige. However, go back just three generations from JFK and the Kennedy's were poor, Irish refugees who had just arrived on the shores of America. This week – we discuss this historic ascent from rags to riches.

Host: Marty Peterson**Producer:** Amirah Zaveri

Guests: Neal Thompson, journalist, author of *The First Kennedy's: The Humble Roots of an American Dynasty*

Compliance issues: Government, Public Service, Career, History, Media, Immigration, Politics

Links for more info:

Neal Thompson

Neal Thompson (@nealthompson) / Twitter

The First Kennedys: The Humble Roots of an American Dynasty Kindle Edition

A Rise to Prominence: John F. Kennedy's Paternal Lineage (US National Park Service)

CULTURE CRASH: THE RETURN OF VINYL RECORDS

Time: 24:42

Duration: 1:45

Synopsis: In recent years, vinyl's have been making a big comeback. We discuss how old and new music alike is being played on this old musical medium.

Host: Evan Rook

Producer: Evan Rook

Compliance issues: Music, History, Culture

Program 22-16**Air Date:** 4/17/22**Executive Producer:** Amirah Zaveri**Production Manager:** Jason Dickey**SEGMENT 1: THE REFUGEE CRISIS: FINDING HELP AMIDST CONFLICT****Time:** 1:47**Duration:** 9:17

Synopsis: As of early April, Russia's invasion of Ukraine has displaced more than 4.2 million refugees, according to UNICEF. And the residents of Ukraine are not the only people who've become refugees due to war, persecution and natural disaster. On Viewpoints this week – we discuss the importance of helping migrants who need support in getting to safety and finding shelter, education, and more.

Host: Gary Price**Producer:** Amirah Zaveri**Guests:** Joe English, spokesperson, UNICEF; Diane Padilla, executive director, Miles 4 Migrants**Compliance issues:** Conflict, Charitable Giving, War, Global Issues, Humanitarian Aid, Refugee Crisis**Links for more info:**

UNICEF

Miles4Migrants

UNHCR

How the war in Ukraine compares to other refugee crises | The Economist

SEGMENT 2: A HISTORY OF FABRIC**Time:** 13:06**Duration:** 10:20

Synopsis: These days, it seems like the blouse or sweater that was bought last season has already disintegrated. When did quality-made clothes disappear, and the rise of new, cheaper fabrics take hold in the U.S.? Author Sofi Thanhauser joins us this week to shed some light on how the garment industry got to where it is today.

Host: Marty Peterson**Producer:** Polly Hansen**Guests:** Sofi Thanhauser, author of *Worn: A People's History of Clothing***Compliance issues:** Fashion Trends, Fashion, Consumerism, Environment, Workers' Rights, History, Manufacturing**Links for more info:***Worn: A People's History of Clothing*: Thanhauser, Sofi: 9781524748395: Amazon.com

Investors Love Fast-Fashion Shein — at Least For Now

A Long History of Exploitation in the Cotton Industry – The New York Times

CULTURE CRASH: THE SCI-FI FILM GENRE**Time:** 24:26**Duration:** 2:00**Synopsis:** From “Interstellar” to “Solaris”, we love a good sci-fi movie that transports us to a new dimension and time. We highlight some of our favorites and why the genre continues to be popular.**Host:** Evan Rook**Producer:** Evan Rook**Compliance issues:** Film, Culture

Program 22-17**Air Date:** 4/24/22**Executive Producer:** Amirah Zaveri**Production Manager:** Jason Dickey**SEGMENT 1: SAVING CORAL REEFS****Time:** 1:47**Duration:** 10:56

Synopsis: Coral reefs are home to 25% of all marine life – approximately 800,000 species. But these vibrant, colorful landscapes are more than just a home for life; coral reefs are animals themselves. Two ocean experts join us this week to share some interesting facts about these unique creatures and why people should care about their declining existence.

Host: Gary Price**Producer:** Amirah Zaveri

Guests: Dr. Helen Fox, conservation science director, Coral Reef Alliance; Dr. Juli Berwald, ocean expert, author of *Life on the Rocks: Building a Future for Coral Reefs*

Compliance issues: Climate Change, Ocean Science, Climate Science, Endangered Species, Environment

Links for more info:

Life on the Rocks: Building a Future for Coral Reefs Hardcover – April 5, 2022

Juli Berwald

The Race to Rebuild the World's Coral Reefs | WIRED

Are corals animals or plants?

SEGMENT 2: NEW YORK CITY: A NATIONAL TREASURE**Time:** 14:45**Duration:** 8:27

Synopsis: New York City is home to more than 8.4 million people. For many, the Big Apple is seen as the center of the universe; it's the most populous city in the U.S. and is a must-see destination for billions across the globe. But the metropolis is much more than its typical stereotypes. Look a little closer and you'll find many hidden gems throughout the city. Tour guide and author Laurie Lewis joins Viewpoints to shed some light on the stories behind some of the city's most famous buildings and parks.

Host: Marty Peterson**Producer:** Amirah Zaveri

Guests: Laurie Lewis, tour guide, owner, Take a Walk New York Tours, author of *New York City Firsts: Big Apple Innovations That Changed the Nation and the World*

Compliance issues: Urban Planning, Tourism, Architecture, Environment, History

Links for more info:

NYC tours that are beyond the standard fare, – TAKE A WALK NEW YORK

New York City Firsts – By Laurie Lewis (paperback): Target

The 40 Best New York City Landmarks to Visit

CULTURE CRASH: THE MANY MULTIVERSES

Time: 24:12

Duration: 2:11

Synopsis: This week on Culture Crash: we break down the new release from A24 in theaters now, titled Everything Everywhere All At Once.

Host: Evan Rook

Producer: Evan Rook

Compliancy issues: Film, Culture

Program 22-18**Air Date:** 5/1/22**Executive Producer:** Amirah Zaveri**Production Manager:** Jason Dickey**SEGMENT 1: THE IMPORTANCE OF SEEKING OUT MENTORS****Time:** 1:47**Duration:** 7:37

Synopsis: There's truth in the saying that the people you surround yourself with heavily impact your life. It alters the decisions you make and the goals and aspirations you set. That's why it's so important to find people who are invested in your success. We speak with two career and mentorship experts this week to break down the many benefits of mentorship and how to go about finding the right person for you.

Host: Gary Price**Producer:** Amirah Zaveri

Guests: Minda Harts, CEO, The Memo LLC, author of *You Are More Than Magic: The Black and Brown Girls' Guide to Finding Your Voice*; Abigail Ingram, executive director, The Polsky Exchange, University of Chicago

Compliance issues: Professional Development, Personal Growth and Development, Communication, Career

Links for more info:

What's the Right Way to Find a Mentor?

Find a Mentor. Search for a Local Program

Polsky Exchange – Polsky Center for Entrepreneurship and Innovation

SEGMENT 2: THE POST-PANDEMIC PUSH TO UNIONIZE**Time:** 11:26**Duration:** 12:05

Synopsis: What does Amazon, Apple, Kellogg and Starbucks all have in common? Workers at locations within these brands have unionized or are in the process of voting whether to form a union. Across the board, in various sectors, there seems to be a continuous stream of personnel calling a strike or moving to unionize. What's behind this big labor movement? What defines a union? We answer these questions and more this week on Viewpoints.

Host: Marty Peterson**Producer:** Amirah Zaveri

Guests: Mason Boykin, shift supervisor, Starbucks, Jacksonville, Florida; Daisy Pitkin, union organizer, Workers United, author of *On the Line: A Story of Class, Solidarity and Two Women's Epic Fight to Build a Union*

Compliance issues: Labor Relations, Wealth Inequality, Labor Rights, Business, Workers' Rights

Links for more info:

Daisy Pitkin – Workman Publishing

Daisy Pitkin (@daisypitkin) / Twitter

Workers United

Starbucks Workers United

Employer/Union Rights and Obligations | National Labor Relations Board

CULTURE CRASH: THE MID-TIER MOVIES

Time: 24:31

Duration: 1:57

Synopsis: We highlight some of the movies that aren't quite worthy of an Oscar nomination but are still entertaining and worth the watch.

Host: Evan Rook

Producer: Evan Rook

Compliance issues: Culture, Film

Program 22-19**Air Date:** 5/8/22**Executive Producer:** Amirah Zaveri**Production Manager:** Jason Dickey**SEGMENT 1: THE ADOLESCENT MENTAL HEALTH CRISIS****Time:** 1:48**Duration:** 10:52

Synopsis: Between 2001 and 2019, suicide rates for young people ages 10 to 19 jumped 40%. Between the same period, emergency room visits for self-harm increased 88%, according to the CDC. The pandemic has only exacerbated these numbers. What's driving this increase? What are experts in the field seeing firsthand? This week on Viewpoints.

Host: Gary Price**Producer:** Amirah Zaveri

Guests: Dr. John MacDonald, middle school guidance counselor, Brockton Public Schools; Dr. Mary Helen Immordino-Yang, professor, education, psychology, neuroscience, University of Southern California, director, USC Center for Affective Neuroscience, Development, Learning and Education

Compliance issues: Education, Mental Health, Psychiatry, Adolescent Health, Psychology

Links for more info:

NIMH » Digital Shareables on Child and Adolescent Mental Health

Mental Health Resources For Adolescents and Young Adults – SAHM

Resources – The Youth Mental Health Project

Find a Therapist, Psychologist, Counselor – Psychology Today

SEGMENT 2: THE CONTINUED GLOBAL INTAKE OF RUSSIA'S DIAMONDS**Time:** 14:42**Duration:** 7:37

Synopsis: Russia is a major exporter of diamonds, with the country supplying one-third of the world's diamonds. This is a notable amount as the large Russian diamond company, Alrosa has direct ties to the Russian government. This week – we cover the global diamond trade and what more needs to be done to ensure that the global diamond business is not funding Russia's invasion of Ukraine.

Host: Marty Peterson**Producer:** Kristen Farrah

Guests: Ian Smillie, conflict diamonds expert, international development consultant

Compliance issues: Law, Natural Resources, Commerce, Mining, Global Trade, War, Finance

Links for more info:

The Guardian – Major jewellers to cease buying Russian origin diamonds

Ban On Russian Diamonds Has Major Loophole. Congress Is Moving To Close It.

Crisis in Ukraine | UNICEF USA

CULTURE CRASH: THE LAST OF US & THE LAST OF US PART II

Time: 23:19

Duration: 3:05

Synopsis: The Last of Us and The Last of Us Part II both have intricate storylines set in a post-zombie apocalypse world that makes for adventurous and exciting gameplay. We dive into the creative development that sets this game apart.

Host: Evan Rook

Producer: Evan Rook

Compliance issues: Gaming, Culture

Program 22-20**Air Date:** 5/15/22**Executive Producer:** Amirah Zaveri**Production Manager:** Jason Dickey**SEGMENT 1: THE HIGHER EDUCATION CONUNDRUM****Time:** 1:48**Duration:** 12:26

Synopsis: Regretting that bachelor's degree in archaeology? Or still chipping away at \$50,000 in student loans from that private university? This week – we talk about why more young people aren't given greater direction when it comes to choosing post-secondary schooling. Two higher education experts join us to talk through some of the challenges facing programs and how students can make a more informed and cost-effective choice.

Host: Gary Price**Producer:** Amirah Zaveri

Guests: Dr. Deb Geller, higher education expert, former associate dean of students, University of California – Los Angeles; Dr. Anthony Carnevale, research professor, director, Center on Education and the Workforce, Georgetown University

Compliance issues: Wealth, Personal Finance, Government, Career, Higher Education**Links for more info:**

College Scorecard

Inside elite transfer admissions: From community college to U-Va. – Washington Post

40,000 Student Loan Borrowers Will Get 'Immediate Debt Cancellation' Automatically — But Questions Remain – Forbes

SEGMENT 2: THE FUTURE OF ETHANOL**Time:** 16:16**Duration:** 7:05

Synopsis: Each year, more than 91 million acres of corn are planted across the country. Currently, 40 percent of this harvest is refined into ethanol. This biofuel is a key additive in the gas that powers our cars and reduces greenhouse gas emissions. But with electric cars gaining popularity – how long will this massive ethanol market survive? How are producers making this process more environmentally friendly?

Host: Marty Peterson**Producer:** Polly Hansen

Guests: Robert Turner, organic farmer, author of *Lewis Mumford and the Food Fighters: A Food Revolution in America*; Ron Lamberty, senior vice president, chief marketing officer, American Coalition for Ethanol; Chris Hill, director, environment and permitting, Summit Carbon Solutions

Compliance issues: Global Trade, Energy Production, Economics, Science, Technology, Farming, Agriculture

Links for more info:

The future of ethanol in America's energy market – Farm and Dairy
Summit Carbon Solutions

CULTURE CRASH: PROUD OF POP

Time: 24:21

Duration: 2:06

Synopsis: Ashamed to blare pop music while driving? Us too. Why does the genre often get such a bad rep? We highlight some of the musicians that are prominent within pop.

Host: Evan Rook

Producer: Evan Rook

Compliance issues: Culture, Music

Program 22-21
Air Date: 5/22/22

Executive Producer: Amirah Zaveri

Production Manager: Jason Dickey

SEGMENT 1: MASKING UP PAST COVID
Time: 1:47

Duration: 10:51

Synopsis: Wondering what to do with all those face masks you've accumulated over the past two years? Well, these face coverings are good for more than just protecting against COVID-19. Long before the pandemic, millions of people in countries across East Asia were accustomed to wearing a mask when they had a cold, it was peak flu season or just in a crowded space. We speak with two experts about the future of face masks in the U.S.

Host: Gary Price

Producer: Amirah Zaveri

Guests: Doctor William Jankowiak, professor, anthropology, University of Nevada – Las Vegas; Dr. Linsey Marr, professor, civil and environmental engineering, Virginia Tech

Compliance issues: History, Epidemiology, Public Health, Disease, Government

Links for more info:

Flu Cases Decline Dramatically This Season

Will We Wear Face Masks Forever?

Why Face Masks Are Encouraged in Asia, but Shunned in the US | Time

SEGMENT 2: AMERICA'S CULTURAL TIES WITH FAST FOOD
Time: 14:40

Duration: 8:54

Synopsis: Most of us point to McDonald's as the founding of fast food as we know it. But the American staple began nearly a hundred years ago with two chains, White Castle and A&W. We speak with Adam Chandler, journalist and author of Drive-Thru Dreams: A Journey Through the Heart of America's Fast-Food Kingdom about the events that fed into the rapid rise of the fast-food industry and how different chains are fighting to stay present and on-trend in today's competitive restaurant landscape.

Host: Marty Peterson

Producer: Amirah Zaveri

Guests: Adam Chandler, journalist, author of Drive-Thru Dreams: A Journey Through the Heart of America's Fast-Food Kingdom

Compliance issues: Food Culture, Business, Culture, History, Health

Links for more info:

What McDonald's Does Right

Drive-Thru Dreams: A Journey Through the Heart of America's Fast-Food Kingdom: Chandler, Adam

CULTURE CRASH: A LONG-AWAITED SEQUEL TO "TOP GUN"

Time: 24:34

Duration: 1:53

Synopsis: Almost 40 years later, there's a sequel to the popular classic, "Top Gun". This time it's "Top Gun: Maverick" and still features Tom Cruise, but he's joined by an entourage of other well-known names in Hollywood. We discuss this highly anticipated theater release.

Host: Evan Rook

Producer: Evan Rook

Compliance issues: Film, Culture

Program 22-22**Air Date:** 5/29/22**Executive Producer:** Amirah Zaveri**Production Manager:** Jason Dickey**SEGMENT 1: JUMPING JOBS IN 2022****Time:** 1:47**Duration:** 9:37

Synopsis: In 2021, more than 40 million Americans left their jobs. Many of these people left their current roles for greener pastures. We analyze how the pandemic changed mindsets on work and discuss some strategies that people who are looking to switch jobs can use.

Host: Gary Price**Producer:** Amirah Zaveri

Guests: Jeremy Schifeling, career expert, director, consumer and product marketing, Khan Academy, author of *Linked: Conquer LinkedIn. Get Your Dream Job. Own Your Future*

Compliance issues: Personal Growth and Development, Social Media, Personal Finance, Technology, Career, Economy

Links for more info:

Jeremy Schifeling / Twitter

*Linked: Conquer LinkedIn. Get Your Dream Job. Own Your Future. Kindle Edition**What Gen Z and millennials want from employers amid Great Resignation***SEGMENT 2: SUPPORTING U.S. FARMERS****Time:** 13:26**Duration:** 9:13

Synopsis: The pandemic exposed the fragility of our global food system and just how much we rely on the many components that make up the food supply chain. At the height of the pandemic, when there were numerous food production and shipping delays, farmers across the U.S. stepped up and contributed to their local food supply. With domestic farms declining, America is extremely reliant on foreign shipments. We discuss the many challenges farmers are facing and the barriers to entry in agriculture.

Host: Marty Peterson**Producer:** Amirah Zaveri

Guests: Robert Tuner, organic farmer, North Carolina, author of *Lewis Mumford and the Food Fighters, A Food Revolution in America*; David Howard, policy campaign co-director, National Young Farmers Coalition; Mike Downey, farmer, Illinois, consultant, Next Gen Ag Advocates

Compliance issues: Land Development, Food Production, Business, Agriculture, Equality

Links for more info:

National Young Farmers Coalition
Next Gen Ag Advocates
Small and Mid-Sized Farmer Resources | USDA

CULTURE CRASH: THE FINAL CHAPTER OF "THIS IS US"

Time: 23:39

Duration: 2:48

Synopsis: We discuss the final season of the hit NBC primetime series, "This Is Us".

Host: Evan Rook

Producer: Evan Rook

Compliance issues: Culture, TV

Program 22-23**Air Date:** 6/5/22**Executive Producer:** Amirah Zaveri**Production Manager:** Jason Dickey**SEGMENT 1: HOW TO: GETTING INTO GARDENING THIS SUMMER****Time:** 1:48**Duration:** 10:26

Synopsis: Getting started in gardening can seem overwhelming - especially if you have trouble keeping a solo houseplant alive. But with some research and a small investment, the rewards of tending to a garden are life-long. We speak with two gardening experts about how to get started and be successful this season.

Host: Gary Price**Producer:** Amirah Zaveri**Guests:** Amy Enfield, horticulturist, Bonnie Plants; Brooke Morgan, urban gardener**Compliance issues:** Food Production, Sustainability, Home Improvement, Hobby, Personal Growth and Development**Links for more info:**

Bonnie Plants

How to Garden – Gardening Basics for Beginners

@whatbrookegrows on Instagram

SEGMENT 2: POST-PANDEMIC TRAVEL**Time:** 14:16**Duration:** 9:07

Synopsis: From long lines at the airport to hard-to-find reservations, people are traveling in full force this summer. Acclaimed TV host and European tour guide Rick Steves joins us this week on Viewpoints to share several traveling tips, including how to get around crowds and stay safe this season.

Host: Marty Peterson**Producer:** Amirah Zaveri**Guests:** Rick Steves, European tour guide, travel writer, PBS TV host**Compliance issues:** History, Public Health, Travel, Personal Finance, Culture**Links for more info:**

Rick Steves Europe

International Travel

TSA PreCheck® | Transportation Security Administration

CULTURE CRASH: THE NEW FLORENCE + THE MACHINE ALBUM**Time:** 24:23**Duration:** 2:04**Synopsis:** We highlight the long-awaited album “Dance Fever” by Florence + the Machine.**Host:** Evan Rook**Producer:** Evan Rook**Compliance issues:** Culture, Music

Program 22-24**Air Date:** 6/12/22**Executive Producer:** Amirah Zaveri**Production Manager:** Jason Dickey**SEGMENT 1: FINDING CALM THROUGH COLORING****Time:** 1:49**Duration:** 10:12

Synopsis: Remember how much fun it was to crack open a new coloring book and crayons when you were a kid? These days, adults are reliving that thrill in massive numbers. We talk to two of the most popular artists of these books about why and how they put them together, what the attraction is for adults and how it can benefit everyone to sit down, unwind and focus on the page in front of them.

Host: Gary Price**Producer:** Amirah Zaveri

Guests: Johanna Basford, artist, author, *Lost Ocean: An inky adventure and coloring book*; Jenean Morrison, artist, designer, author of *2016 Coloring Calendar*

Compliance issues: Hobby, Personal Growth and Development, Literature, Education, Arts, Mental Health

Links for more info:

Johanna Basford

Jenean Morrison Art & Design

SEGMENT 2: THE ENVIRONMENTAL DAMAGE CAUSED BY MILLIONS OF LITTERED CIGARETTES**Time:** 14:03**Duration:** 8:56

Synopsis: While many Americans have grown to be increasingly eco-conscious, some things remain the same. It seems like all too often it's common to see a driver chuck a cigarette butt out the window or throw one on the sidewalk. We speak with expert Thomas Novotny about how this type of littering affects the environment and the wildlife within it.

Host: Marty Peterson**Producer:** Amirah Zaveri

Guests: Dr. Thomas Novotny, professor emeritus of epidemiology and biostatistics, San Diego State University

Compliance issues: Wildlife, Pollution, Environment, Health, Wildlife Protection

Links for more info:

Thomas Novotny | SDSU School of Public Health

5 ways cigarette litter impacts the environment

Tobacco and the environment

CULTURE CRASH: POW! HBO MAX BATTLES SUPERHERO FATIGUE**Time:** 24:00**Duration:** 2:28**Synopsis:** Yearning for shows with that classic, comic book feeling? HBO Max is here to save the day. With its new additions of Batman Beyond and Batman: The Animated Series, you can get back to your superhero roots.**Host:** Evan Rook**Producer:** Evan Rook**Compliance issues:** TV, Culture

Program 22-25
Air Date: 6/19/22

Executive Producer: Amirah Zaveri

Production Manager: Jason Dickey

SEGMENT 1: FOOD, FINE DINING & MORE: A CONVERSATION WITH ILIANA REGAN
Time: 1:48

Duration: 9:18

Synopsis: Iliana Regan has worked in the restaurant biz in almost every position imaginable. From mid-tier service to high-end fine dining, she's a self-taught, Michelin-starred chef that's known for her ability to create masterful dishes using naturally sourced and foraged ingredients. However, as she's risen the ranks over the years and made a name for herself, she's also had several low points in her life that have shaped who she is today. We sit down in-person with Regan to talk about her fine dining career and her struggles with addiction.

Host: Gary Price

Producer: Amirah Zaveri

Guests: Iliana Regan, Michelin-starred chef, entrepreneur, author, Burn the Place

Compliance issues: Entrepreneurship, Business, Addiction, Career, Health, Personal Growth and Development

Links for more info:

Burn the Place: A Memoir Hardcover – Iliana Regan

After Culinary and Literary Acclaim, She's Moving to the Woods – NY Times

Elizabeth Restaurant

The Milkweed Inn

SEGMENT 2: THE ART OF DETECTING A LIE
Time: 13:08

Duration: 10:07

Synopsis: How do professionals question people in a way that uncovers the truth? What are some body gestures that show someone's lying? This week – we speak with one interrogation expert about the subtle signs that give people away and how the average person can use these tactics in day-to-day interactions.

Host: Marty Peterson

Producer: Amirah Zaveri

Guests: Maryann Karinch, a human behavior expert and author of the book, Nothing But the Truth: Secrets from Top Intelligence Experts to Control the Conversation and Get the Information You Need

Compliance issues: Literature, Psychology, Communication, Career, Information Technology

Links for more info:

Psychological sleuths—Detecting deception

How To Spot A Liar: Gregory Hartley, Maryann Karinch: Books: Amazon.com

CULTURE CRASH: THE EVOLUTION OF HARRY STYLES

Time: 24:16

Duration: 2:10

Synopsis: British superstar Harry Styles is out with a new album that's getting rave reviews. We discuss his evolution from boy band hunk to a respected solo artist and actor.

Host: Evan Rook

Producer: Evan Rook

Compliance issues: Culture, Music

Program 22-26**Air Date:** 6/26/22**Executive Producer:** Amirah Zaveri**Production Manager:** Jason Dickey**SEGMENT 1: WORKING IN CHILDCARE: THE HEAVY COST OF RAISING SOMEONE ELSE'S KIDS****Time:** 1:48**Duration:** 11:14

Synopsis: There are more than 438,000 employees working in childcare, according to the U.S. Bureau of Labor Statistics. As of May 2021, the median hourly wage in this sector is around \$13/hour. With rising costs and many other open jobs, many are leaving their positions in childcare. We speak with two experts about the growing early childcare gap in the U.S. and why bettering the sector starts with valuing these workers more.

Host: Gary Price**Producer:** Amirah Zaveri

Guests: Dr. Kaitlin Moran, assistant professor, early childhood education, St. Joseph's University; Dr. Elizabeth Cummins Munoz, lecturer, writing and communication, Rice University, author, *Mothercoin: The Story of Our Immigrant Nannies*

Compliance issues: Child Development, Inequity, Poverty, Parenting, Motherhood, Generational Inequality, Mental Health, Education

Links for more info:

Elizabeth Cummins Munoz | Program in Writing and Communication | Rice University
NAEYC

Kaitlin Moran Ph.D. | Saint Joseph's University

Beacon Press: *Mothercoin*

SEGMENT 2: BARELY SURVIVING: MAKING A LIVING AS A GARMENT WORKER**Time:** 15:04**Duration:** 7:30

Synopsis: The average garment worker in Bangladesh is paid about \$86/month. A livable wage in the country is around \$200/month. Even in the U.S., it's not much better. Most employees in U.S. garment factories work 60-70 hours per week and are paid \$300/week, totaling \$1,200/month, according to the Garment Worker Center. Longtime fashion writer and industry expert Dana Thomas joins us to help us understand the labor and environmental crisis plaguing the fashion industry.

Host: Marty Peterson**Producer:** Amirah Zaveri

Guests: Dana Thomas, writer, author, *Fashionopolis*

Compliance issues: Fashion, Manufacturing, Sustainability, Environment, Workers Rights, Inequity, Global Issues, Fair Wages

Links for more info:

Psychological sleuths–Detecting deception

How To Spot A Liar: Gregory Hartley, Maryann Karinch: Books: Amazon.com

CULTURE CRASH: THE TRUE VIEWING EXPERIENCE

Time: 23:34

Duration: 2:52

Synopsis: We discuss the dilemma of cropping full-screen shows and films to fit our modern, widescreen TVs. Many who are against this edit argue that changing the format ruins the originality and nostalgia of the media.

Host: Evan Rook

Producer: Evan Rook

Compliance issues: Culture, Film, History, Streaming, TV

PSA – COMMUNITY ANNOUNCEMENTS – ALERT NOTIFICATIONS

As with all multi-language stations, there is a specific and unique audience that is supporting and listening to its airwaves. Our producers know that to keep their listeners “in the know” with events, programs, notifications, seminars, fairs... is a way to connect the audience and return the audience and in return, the audience stays in tune with the program.

All the programs broadcast these entities in the homeland language to make all information clear and timely to its audience.

Polnet Communications LTD, has always supported the PSA vendors such as the

AD COUNCIL

IBA

Lake County Health department and Lake County College

Along with other state and local non-for-profits organizations. Usually we are able to provide a 60 seconds spot on top of each hour along with the station legal I.D.

The following are a sample of resources and sources of materials used to provide our PSA and community announcement choices. We also do not manipulate our producers with announcement choices, we feel that they know what is concerning and is of importance to their listenership.

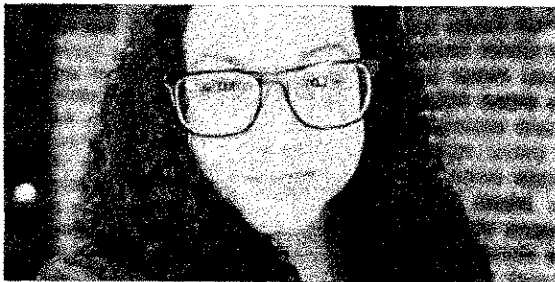
Also during our self produced programming (MUSICLINES) we run several spots of PSA material during these times.

Ad Council Search

All

SORT BY:

Newest



ARTICLE

Champion for Good: Rebecca Murga

Champions for Good

Rebecca Murga is a writer-producer-director and U.S. Army veteran who recently directed veteran-focused spots for two current Ad Council campaigns, End Family Fire and...



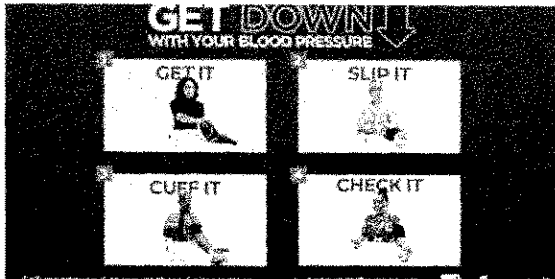
ARTICLE

National campaign launches new PSAs

consider adopting teens in foster care

News & Press Releases

Now in its 17th year, this successful campaign has contributed to the more than 900,000 children and youth that have been adopted from the U.S. foster care system.



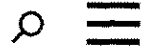
ARTICLE

Dance and Music Aim to Inspire U.S. Adults to Improve Blood Pressure in New PSAs from the American Heart Association, American Medical Association, and the Ad Council

News & Press Releases

The campaign encourages historically underserved communities to connect with a health care professional about self-monitoring their blood pressure





**ALZHEIMER'S ASSOCIATION
Honors and Empowers
Caregivers During
National Family
Caregivers Month and
National Alzheimer's
Disease Awareness
Month**

News & Press Releases

New PSAs from Ad Council and Alzheimer's Association Remind Families to Discuss Cognition Concerns Early



ARTICLE

**VA and the Ad Council
Launch National
Campaign to Reduce
Veteran Suicide**

News & Press Releases

Ahead of Veterans Day, New "Don't Wait, Reach Out" Effort Encourages Struggling Veterans to Seek Support Before They Get to a Crisis Point

**YOU MAKE MONEY.
NOW MAKE IT WORK FOR YOUR RETIREMENT.**

WeSaySaveIt.org



Women Find Inspiration to Reclaim Financial Independence in New PSAs from AARP and the Ad Council

News & Press Releases

New PSAs Work to Empower the Two-Thirds of American Women Who Believe They are Unlikely to Achieve Financial Security in Retirement



ARTICLE

Rural Americans Share Personal Stories to Inspire Confidence in COVID-19 Vaccines in Local Communities and Nationwide

News & Press Releases

New PSAs from the Ad Council and COVID Collaborative Speak to Those Still Hesitant About Vaccination Across Rural Communities



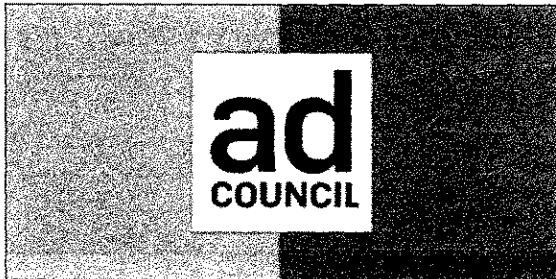


ARTICLE

With Veterans at Far Greater Risk of Gun Suicide, New National Campaign Promotes Safe Firearm Storage to Save Lives

News & Press Releases

This Suicide Prevention Month, Brady and the Ad Council Launch "Service Never Stops" PSAs from Facebook Creative Shop and Gig Line Media



ARTICLE

Young Adults and Parents are Focus of New Vaccine PSAs from the Ad Council and

COVID-19 Vaccine Education Initiative

News & Press Releases

25 Million Eligible Americans Still Undecided, Young Adults and Parents of Teens Are Critical to Vaccine Acceptance



ARTICLE

The Ad Council and the National Highway Traffic Safety Administration Encourage Parents to “Get the Big Things Right” When it Comes to Kids’ Safety in the Car

News & Press Releases

This Child Passenger Safety Week, New PSAs Highlight the Importance of Choosing the Right Car Seat or Booster Seat for a Child’s Age and Size



ARTICLE

Energy Coalition to put full national weight behind Science Moms climate campaign to accelerate action

News & Press Releases

On the heels of the IPCC's latest report, new campaign responds to research finding that 60% of Americans are concerned about climate change, but only 14% talk about it...

FOR IMMEDIATE RELEASE: Science Moms joins the Energy Coalition to put full national weight behind Science Moms climate campaign to accelerate action. The Energy Coalition will be a powerful force behind the Science Moms campaign. Through the leadership of the U.S. Department of Energy and the Energy Coalition.

###

FOR IMMEDIATE RELEASE: Science Moms joins the Energy Coalition to put full national weight behind Science Moms climate campaign to accelerate action. The Energy Coalition will be a powerful force behind the Science Moms campaign. Through the leadership of the U.S. Department of Energy and the Energy Coalition.

MEDIA ASSET

Dance Like a Dad

live-announcer-copy



ARTICLE

Pope Francis Joins the Ad Council and COVID Collaborative's "It's Up To You" Campaign to Inspire Confidence in the COVID-19 Vaccines

and Six Cardinals and Archbishops from North, Central and South America are Featured in a New PSA Reaching Global...



ARTICLE

Champion For Good: Julie Garner

Champions for Good

This year marks the 10th anniversary of the partnership between the Ad Council and Project Yellow Light, an organization that combats distracted driving through student-...



ARTICLE

Celebrating Smokey Bear's 77th Birthday

Impact

Smokey Bear turns 77 today, August 9th, 2021. His Ad Council Wildfire Prevention campaign in partnership with the U.S. Forest Service and the National Association of Stat...