

Federal Communications Commission

TELEVISION BROADCAST STATION LICENSE

Licensee/Permittee

WJCL Hearst Television LLC
P.O. Box 1800

Raleigh, NC, 27602

Call Sign	File Number
WJCL	000029019

Facility ID: 37174

NTSC TSID: 812

Digital TSID: 813

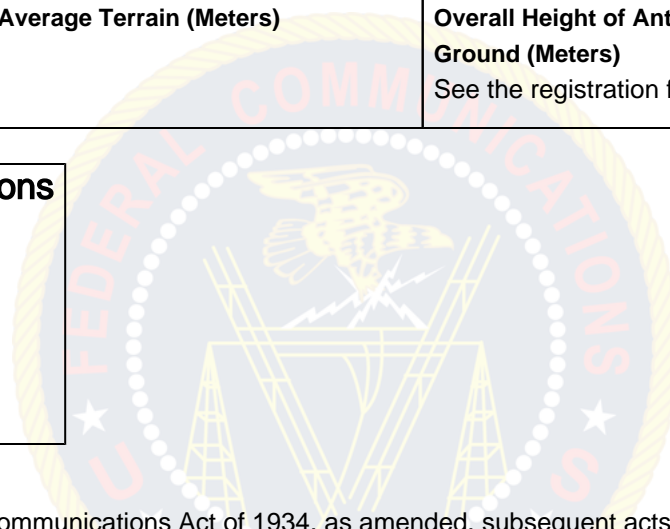
This License Modifies License No.: BLCDT-20091013AFS

Grant Date 08/01/2017		Expiration Date 04/01/2021	
Hours of Operation Unlimited			
Station Location City SAVANNAH State GA		Frequency (MHz) 518.0 - 524.0	Station Channel 22
Facility Type Commercial			
This authorization reissued to WJCL Hearst Television LLC on 08/01/2017. Reissued to correct the mechanical beam tilt.			

Antenna Structure Registration Number 1032655	
Transmitter Type Accepted. See Sections 73.1660, 73.1665 and 73.1670 of the Commission's Rules.	Transmitter Output Power(kW) As required to achieve authorized ERP.
Antenna Coordinates Latitude 32-3-30.0 N Longitude 81-20-18.0 W	Antenna Type Directional

Description of Antenna Make RCA Model TFU 45J	
Antenna Beam Tilt (Degrees Electrical) 0.75	Antenna Beam Tilt (Degrees Mechanical @ Degrees Azimuth) 0.25 @ 90.0
Major Lobe Directions 220.0 320.0	Maximum Effective Radiated Power (Average) 350 kW 25.44 DBK
Height of Radiated Center Above Ground (Meters) 437.2	Height of Radiated Center Above Mean Sea Level (Meters) 443.0
Height of Radiated Center Above Average Terrain (Meters) 436	Overall Height of Antenna Structure Above Ground (Meters) See the registration for this antenna structure.

Waivers/Special Conditions



Subject to the provisions of the Communications Act of 1934, as amended, subsequent acts and treaties, and all regulations heretofore or hereafter made by this Commission, and further subject to the conditions set forth in this permit, the permittee is hereby authorized to construct the radio transmitting apparatus herein described. Installation and adjustment of equipment not specifically set forth herein shall be in accordance with representations contained in the permittee's application for construction permit except for such modifications as are presently permitted, without application, by the Commission's Rules.

Equipment and program tests shall be conducted only pursuant to Sections 73.1610 and 73.1620 of the Commission's Rules.