

Commercial Limits in Children's Programs Certification

After due review of internal station records and documentation provided to us by program suppliers, the licensee hereby certifies that the station fully complied with the FCC's commercial limits in children's programs, as specified at 47 C.F.R. Section 73.670.

Station Call Sign: WOOD TV

Quarter: 4Q 2014

Signed: James DeHart

Date: 1/6/17

Title: Traffic Manager

January 3, 2017

Dear Affiliate Partner:

To assist you in complying with the reporting requirements for children's television and the requirement that stations air "core" educational and informational children's programming, we are providing you with episode-specific descriptions ("**The More You Know**" educational and informational programming block) as set forth in the attached Quarterly Children's Programming Report for the 4th quarter of 2016. The report includes information that will be helpful in preparing FCC Form 398. Please note that we have not included the specific dates and times for each of the programs as that information may be station-specific.

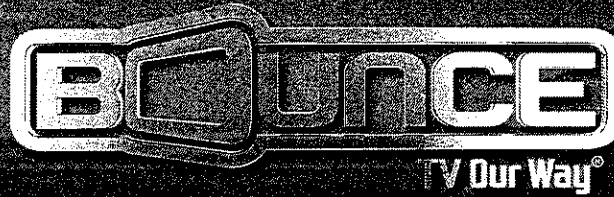
This report is divided into the following categories:

1. Educational Objectives and Show Summaries: **The More You Know** both for programs broadcast in the 4th quarter of 2016 and those planned for the 1st quarter of 2017.
2. Core Programming: Regularly scheduled programming furnished by the NBC Network that is specifically designed to serve the educational and informational needs of children ages 13-16. Each of these programs is identified on-air as educational and informational with the "E/I" icon and is similarly identified to the national listing services. To assist stations with the preemption report section of FCC Form 398, we have added specific episode numbers. Please note that the target age range for **The More You Know** programming is identified as 13-16 years old.
3. Other Programming: Programming furnished by the NBC Network that contributes to the educational and informational needs of children 16 and under, but is not specifically designed to meet the educational and informational needs of children.
4. Public service announcements targeted to children 16 and under.
5. Non-broadcast efforts that enhance the educational and informational value of NBC Network programming to children.

The regularly-scheduled children's programming and promotional content furnished to you by the NBC Network during the 4th quarter of 2016 complied with the commercial limits of the Children's Television Act, and 47 C.F.R. §§ 73.670(a)-(d), provided that you broadcast and distributed such programming as furnished to you by NBC, and did not add any promotional or advertising content thereto other than as directed by NBC via weekly postings on APT.

If you have any questions about these reporting requirements, please feel free to call us.

Karen Peled
NBCUniversal Media, LLC
Contracts Counsel, NBC Broadcasting, Affiliate Relations
(212) 664-6858
karen.peled@nbcuni.com



COMMERCIAL LIMITS AND WEBSITE RULE COMPLIANCE CERTIFICATION FOURTH QUARTER 2016

During the fourth quarter of 2016 (October 1, 2016 – December 31, 2016) the following Educational/ Informational programs tailored to meet the requirements for teens 13 – 16 years old appeared on the Bounce TV Network. As a result of these programs originally being created for and directed at teens 13 and above, the rules (47 C.F.R. § 73.670) for commercial limits and websites do not apply.

E/I Programs (series)

Program: All In With Laila Ali (October 1, 2016 – December 31, 2016)
Time: Saturdays 10:00 AM - 10:30 AM ET
Duration: 30 minutes
Rating: TV-PG E/I

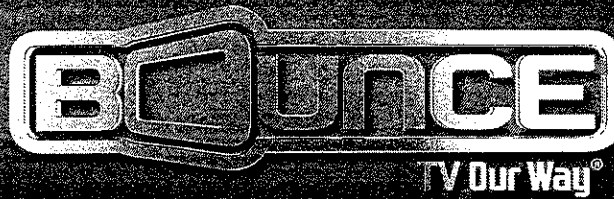
Program: All In With Laila Ali (October 1, 2016 – December 31, 2016)
Time: Saturdays 10:30 AM - 11:00 AM ET
Duration: 30 minutes
Rating: TV-PG E/I

Program: Culture Click (October 1, 2016 – December 31, 2016)
Time: Saturdays 11:00 AM – 11:30 AM ET
Duration: 30 minutes
Rating: TV-PG E/I

Program: Animal Tails (October 1, 2016 – December 31, 2016)
Time: Saturdays 11:30 AM - 12:00 PM ET
Duration: 30 minutes
Rating: TV-G E/I

Program: Everyday Health (October 1, 2016 – December 31, 2016)
Time: Saturdays 12:00 PM - 12:30 PM ET
Duration: 30 minutes
Rating: TV-PG E/I

Program: Everyday Health (October 1, 2016 – December 31, 2016)
Time: Saturdays 12:30 PM - 1:00 PM ET
Duration: 30 minutes
Rating: TV-PG E/I



COMMERCIAL LIMITS AND WEBSITE RULE COMPLIANCE CERTIFICATION FOURTH QUARTER 2016

During the fourth quarter of 2016 (October 1, 2016 – December 31, 2016) the following Educational/ Informational programs tailored to meet the requirements for teens 13 – 16 years old appeared on the Bounce TV Network. As a result of these programs originally being created for and directed at teens 13 and above, the rules (47 C.F.R. § 73.670) for commercial limits and websites do not apply.

E/I Programs (series)

Program: All In With Laila Ali (October 30, 2016 – November 27, 2016)

Time: Sundays 10:00 AM – 10:30 AM ET

Duration: 30 minutes

Rating: TV-PG E/I

Program: All In With Laila Ali (October 30, 2016)

Time: Sundays 10:30 AM – 11:00 AM ET

Duration: 30 minutes

Rating: TV-PG E/I

Program: All In With Laila Ali (November 27, 2016)

Time: Sundays 10:30 AM – 11:00 AM ET

Duration: 30 minutes

Rating: TV-PG E/I

Program: All In With Laila Ali (December 04, 2016)

Time: Sundays 11:00 AM – 11:30 AM ET

Duration: 30 minutes

Rating: TV-PG E/I

Program: All In With Laila Ali (December 04, 2016)

Time: Sundays 11:30 AM – 12:00 PM ET

Duration: 30 minutes

Rating: TV-PG E/I

Program: Culture Click (November 6, 2016- November 20, 2016)

Time: Sundays 10:30 AM – 11:00 AM ET

Duration: 30 minutes

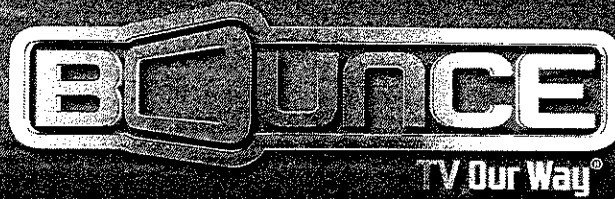
Rating: TV-PG E/I

Program: Culture Click (December 11, 2016)

Time: Sundays 10:30 AM – 11:00 AM ET

Duration: 30 minutes

Rating: TV-PG E/I



COMMERCIAL LIMITS AND WEBSITE RULE COMPLIANCE CERTIFICATION FOURTH QUARTER 2016

During the third quarter of 2016 (October 1, 2016 – December 31, 2016) the following Educational/Informational programs tailored to meet the requirements for teens 13 – 16 years old appeared on the Bounce TV Network. As a result of these programs originally being created for and directed at teens 13 and above, the rules (47 C.F.R. § 73.670) for commercial limits and websites do not apply.

E/I Programs (series)

Program: Everyday Health (November 6, 2016– November 27, 2016)
Time: Sundays 11:00 AM – 11:30 AM ET
Duration: 30 minutes
Rating: TV-PG E/I

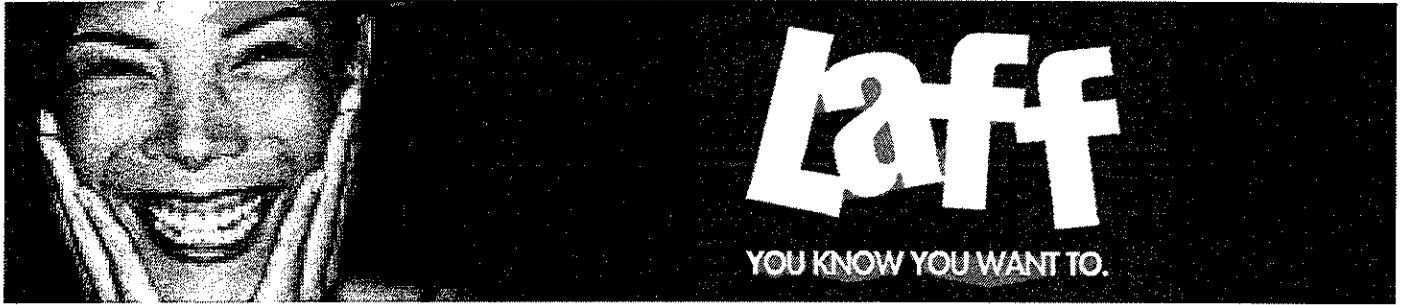
Program: Everyday Health (November 6, 2016– November 27, 2016)
Time: Sundays 11:30 AM - 12:00 PM ET
Duration: 30 minutes
Rating: TV-PG E/I

Program: Everyday Health (December 4, 2016)
Time: Sundays 10:00 AM – 10:30 AM ET
Duration: 30 minutes
Rating: TV-PG E/I

Program: Everyday Health (December 4, 2016)
Time: Sundays 10:30 AM – 11:00 AM ET
Duration: 30 minutes
Rating: TV-PG E/I

Program: Everyday Health (December 4, 2016)
Time: Sundays 12:00 PM – 12:30 PM ET
Duration: 30 minutes
Rating: TV-PG E/I

Program: Everyday Health (December 4, 2016)
Time: Sundays 12:30 PM – 1:00 PM ET
Duration: 30 minutes
Rating: TV-PG E/I



COMMERCIAL LIMITS AND WEBSITE RULE COMPLIANCE CERTIFICATION FOURTH QUARTER 2016

During the fourth quarter of 2016 (October 1, 2016 – December 31, 2016) the following Educational/ Informational programs tailored to meet the requirements for teens 13 – 16 years old appeared on the LAFF Network. As a result of these programs originally being created for and directed at teens 13 and above, the rules (47 C.F.R. § 73.670) for commercial limits and websites do not apply.

E/I Programs (series)

Program: Jack Hanna's Animal Adventures (October 1, 2016 – December 31, 2016)
Time: Saturdays 10:00- 10:30 AM ET
Duration: 30 minutes
Rating: TV-G E/I

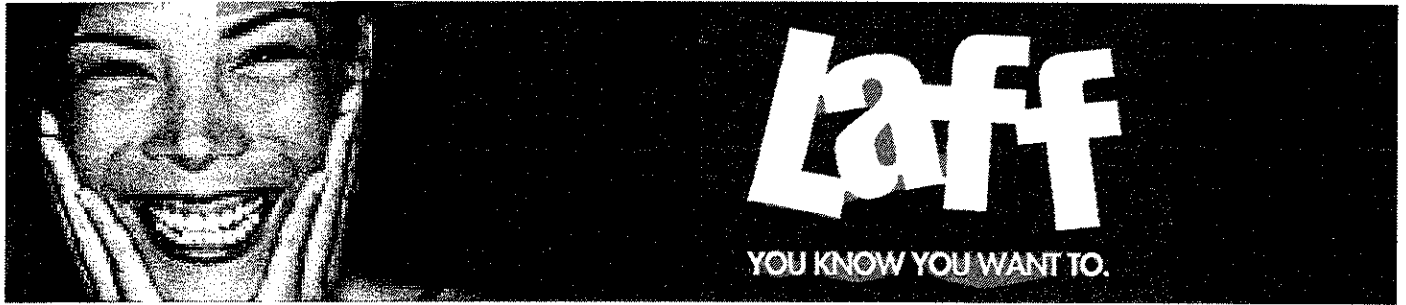
Program: Outback Adventures With Tim Faulkner (October 1, 2016 – December 31, 2016)
Time: Saturdays 10:30- 11:00 AM ET
Duration: 30 minutes
Rating: TV-G E/I

Program: Outback Adventures With Tim Faulkner (October 1, 2016 – December 31, 2016)
Time: Saturdays 11:00- 11:30 AM ET
Duration: 30 minutes
Rating: TV-G E/I

Program: Reluctantly Healthy (October 1, 2016 – December 31, 2016)
Time: Saturdays 11:30- 12:00 PM ET
Duration: 30 minutes
Rating: TV-PG E/I

Program: Food For Thought With Claire Thomas (October 1, 2016 – December 31, 2016)
Time: Saturdays 12:00- 12:30 PM ET
Duration: 30 minutes
Rating: TV-PG E/I

Program: Food For Thought With Claire Thomas (October 1, 2016 – December 31, 2016)
Time: Saturdays 12:30- 1:00 PM ET
Duration: 30 minutes
Rating: TV-PG E/I



COMMERCIAL LIMITS AND WEBSITE RULE COMPLIANCE CERTIFICATION FOURTH QUARTER 2016

During the fourth quarter of 2016 (October 1, 2016 – December 31, 2016) the following Educational/ Informational programs tailored to meet the requirements for teens 13 – 16 years old appeared on the LAFF Network. As a result of these programs originally being created for and directed at teens 13 and above, the rules (47 C.F.R. § 73.670) for commercial limits and websites do not apply.

E/I Programs (series)

Program: Jack Hanna's Animal Adventures (October 29, 2016 – November 12, 2016)
Time: Saturdays 1:00- 1:30 PM ET
Duration: 30 minutes
Rating: TV-G E/I

Program: Reluctantly Healthy (October 29, 2016 – November 19, 2016)
Time: Saturdays 2:00- 2:30 PM ET
Duration: 30 minutes
Rating: TV-PG E/I

Program: Food For Thought With Claire Thomas (October 29, 2016 – November 26, 2016)
Time: Saturdays 2:30- 3:00 PM ET
Duration: 30 minutes
Rating: TV-PG E/I

Program: Outback Adventures With Tim Faulkner (November 19, 2016)
Time: Saturdays 1:00- 1:30 PM ET
Duration: 30 minutes
Rating: TV-G E/I

Program: Outback Adventures With Tim Faulkner (October 29, 2016 – November 26, 2016)
Time: Saturdays 1:30- 2:00 PM ET
Duration: 30 minutes
Rating: TV-G E/I

Program: Reluctantly Healthy (December 3, 2016)
Time: Saturdays 1:00- 1:30 PM ET
Duration: 30 minutes
Rating: TV-PG E/I



COMMERCIAL LIMITS AND WEBSITE RULE COMPLIANCE CERTIFICATION FOURTH QUARTER 2016

During the fourth quarter of 2016 (October 1, 2016 – December 31, 2016) the following Educational/ Informational programs tailored to meet the requirements for teens 13 – 16 years old appeared on the LAFF Network. As a result of these programs originally being created for and directed at teens 13 and above, the rules (47 C.F.R. § 73.670) for commercial limits and websites do not apply.

E/I Programs (series)

Program: Food For Thought With Claire Thomas (November 26, 2016)
Time: Saturdays 2:00- 2:30 PM ET
Duration: 30 minutes
Rating: TV-PG E/I

Program: Jack Hanna's Animal Adventures (December 3, 2016)
Time: Saturdays 1:30- 2:00 PM ET
Duration: 30 minutes
Rating: TV-G E/I