

Commercial Limits in Children's Programs Certification

After due review of internal station records and documentation provided to us by program suppliers, the licensee hereby certifies that the station fully complied with the FCC's commercial limits in children's programs, as specified at 47 C.F.R. Section 73.670.

Station Call Sign: WOOD TV

Quarter: 2016 3Q

Signed: James Schultz

Date: 10/4/16

Title: Traffic Manager

October 3, 2016

Dear Affiliate Partner:

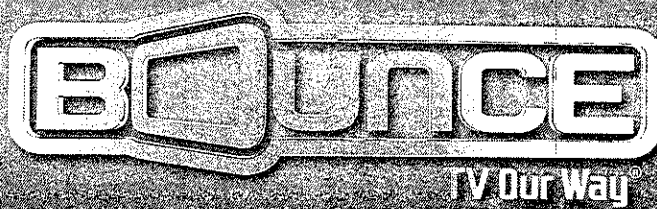
To assist you in complying with the reporting requirements for children's television and the requirement that stations air "core" children's programming, we are providing you with episode-specific descriptions (the "NBC Kids" educational and informational programming block) as set forth in the attached Community Relations Quarterly Children's Programming Report for the 3rd quarter of 2016. The report includes information to help prepare FCC Form 398.

Core programming: Regularly scheduled programming furnished by the NBC Network that is specifically designed to serve the educational and informational needs of children 16 and under. Each of these programs is identified on-air as educational and informational with the "E/I" icon, and is similarly identified to the national listing services. To assist stations with the preemption report section of FCC Form 398, we have added specific episode numbers. Please note that the age target for NBC Kids programming is identified as 2-5 years old.

The regularly-scheduled children's programming and promotional content furnished to you by the NBC Network during the 3rd quarter of 2016 complied with the commercial limits of the Children's Television Act, and 47 C.F.R. §§ 73.670(a)-(d), provided that you broadcast and distributed such programming as furnished to you by NBC, and did not add any promotional or advertising content thereto other than as directed by NBC via weekly postings on APT.

If you have any questions about these reporting requirements, please feel free to call us.

Karen Peled
NBCUniversal Media LLC
Contracts Counsel, NBC Broadcasting, Affiliate Relations
(212) 664-6858
karen.peled@nbcuni.com



COMMERCIAL LIMITS AND WEBSITE RULE COMPLIANCE CERTIFICATION THIRD QUARTER 2016

During the third quarter of 2016 (July 1, 2016 – September 30, 2016) the following Educational/Informational programs tailored to meet the requirements for teens 13 – 16 years old appeared on the Bounce TV Network. As a result of these programs originally being created for and directed at teens 13 and above, the rules (47 C.F.R. § 73.670) for commercial limits and websites do not apply.

E/I Programs (series)

Program: Awesome Adventures (July 1, 2016 – September 30, 2016)
Time: Saturdays 10:00 AM - 10:30 AM ET
Duration: 30 minutes
Rating: TV-G E/I

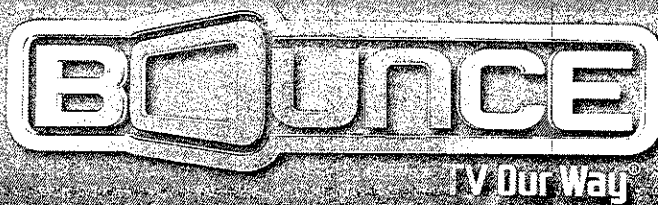
Program: Live Life and Win (July 1, 2016 – September 4, 2016)
Time: Saturdays 10:30 AM - 11:00 AM ET
Duration: 30 minutes
Rating: TV-G E/I

Program: All In With Laila Ali (September 5, 2016 - September 30, 2016)
Time: Saturdays 10:30 AM - 11:00 AM ET
Duration: 30 minutes
Rating: TV-PG E/I

Program: Animal Atlas (July 1, 2016 – September 30, 2016)
Time: Saturdays 11:00 AM - 11:30 AM ET
Duration: 30 minutes
Rating: TV-G E/I

Program: Awesome Adventures (July 1, 2016 – September 30, 2016)
Time: Saturdays 11:30 AM - 12:00 PM ET
Duration: 30 minutes
Rating: TV-G E/I

Program: Live Life and Win (July 1, 2016 – September 4, 2016)
Time: Sundays 10:00 AM - 10:30 AM ET
Duration: 30 minutes
Rating: TV-G E/I



COMMERCIAL LIMITS AND WEBSITE RULE COMPLIANCE CERTIFICATION THIRD QUARTER 2016

During the third quarter of 2016 (July 1, 2016 – September 30, 2016) the following Educational/Informational programs tailored to meet the requirements for teens 13 – 16 years old appeared on the Bounce TV Network. As a result of these programs originally being created for and directed at teens 13 and above, the rules (47 C.F.R. § 73.670) for commercial limits and websites do not apply.

E/I Programs (series)

Program: The Real Winning Edge (July 1, 2016 – September 4, 2016)

Time: Sundays 10:30 AM - 11:00 AM ET

Duration: 30 minutes

Rating: TV-PG E/I

Program: Everyday Health (September 5, 2016 - September 30, 2016)

Time: Sundays 10:00 AM - 10:30 AM ET

Duration: 30 minutes

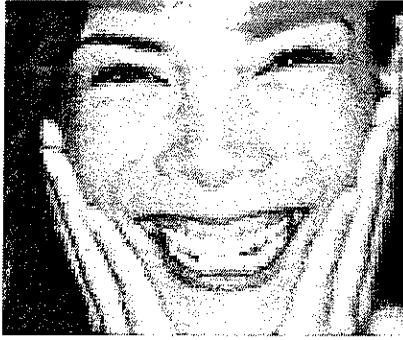
Rating: TV-PG E/I

Program: Everyday Health (September 5, 2016 - September 30, 2016)

Time: Sundays 10:30 AM - 11:00 AM ET

Duration: 30 minutes

Rating: TV-PG E/I



Laff

YOU KNOW YOU WANT TO.

COMMERCIAL LIMITS AND WEBSITE RULE COMPLIANCE CERTIFICATION THIRD QUARTER 2016

During the third quarter of 2016 (July 1, 2016 – September 30, 2016) the following Educational/Informational programs tailored to meet the requirements for teens 13 – 16 years old appeared on the LAFF Network. As a result of these programs originally being created for and directed at teens 13 and above, the rules (47 C.F.R. § 73.670) for commercial limits and websites do not apply.

E/I Programs (series)

Program: Eco Company (July 1, 2016 – September 30, 2016)
Time: Saturdays 12:00 - 12:30 PM ET
Duration: 30 minutes
Rating: TV-G E/I

Program: Swap TV (July 1, 2016 – September 30, 2016)
Time: Saturdays 12:30 - 1:00 PM ET
Duration: 30 minutes
Rating: TV-G E/I



Laff

YOU KNOW YOU WANT TO

COMMERCIAL LIMITS AND WEBSITE RULE COMPLIANCE CERTIFICATION THIRD QUARTER 2016

During the third quarter of 2016 (July 1, 2016 – September 30, 2016) the following Educational/Informational programs tailored to meet the requirements for teens 13 – 16 years old appeared on the LAFF Network. As a result of these programs originally being created for and directed at teens 13 and above, the rules (47 C.F.R. § 73.670) for commercial limits and websites do not apply.

E/I Programs (series)

Program: Eco Company (July 1, 2016 – September 30, 2016)
Time: Saturdays 10:00- 10:30 AM ET
Duration: 30 minutes
Rating: TV-G E/I

Program: Swap TV (July 1, 2016 – September 30, 2016)
Time: Saturdays 10:30- 11:00 AM ET
Duration: 30 minutes
Rating: TV-G E/I

Program: Make: television (July 1, 2016 – September 30, 2016)
Time: Saturdays 11:00 AM- 11:30 AM ET
Duration: 30 minutes
Rating: TV-G E/I

Program: Animal Outtakes (July 1, 2016 – September 4, 2016)
Time: Saturdays 11:30- 12:00 PM ET
Duration: 30 minutes
Rating: TV-PG E/I

Program: Reluctantly Healthy (September 5, 2016 – September 30, 2016)
Time: Saturdays 11:30- 12:00 PM ET
Duration: 30 minutes
Rating: TV-PG E/I