

Bluff City Radio LLC Programs to deal with Issues: October, November and December, 2016

Bluff City Radio LLC broadcast a program from eight until ten am every Monday through Friday titled South Arkansas Today.

The program is open to guest who are interested in promoting or discussing any issues or activities of general interest to residents of the Bluff City Radio coverage area. The program was aired KHUC and also used for PSA and on air talent discussion on KTPB, KPBA and KTRN. . Issues discussed are attached in the file. Some of the issues included:

Additionally, each Bluff City Radio Station Ran PSA's on a regular basis promoting these and other events and problems. A copy of many of these events and problems is included in the file.

- Helped the Star City, Arkansas Veterans of Foreign Wars, American Legion and the Lincoln County Veteran's Administration to publicize the open house of the Veteran's Museum.
- Helped the Redfield Chamber of Commerce and Community Center promote their events including a Founders Day and Halloween Carnival as well as the Miss Redfield Pagent sign up. Live Broadcast from the event to help increase attendance.
- Interviewed and aired PSA's about the Pumpkin Patch produced by the Hardin New Life church.
- Helped the Pine Bluff Police Department promote their annual Fall Festival.
- Broadcast over 30 Football games for White Hall High School, Pine Bluff High School and Watson Chapel High School.
- Several interviews about the Pine Bluff Festival Association " Enchanted Land of Lights" Christmas Festival
- Helped promote several Christmas Festivals, Parade's and other Christmas activities for area church's and organizations
- Interviewed and promoted the 2016 Komen Race for the Cure in Little Rock and Pine Bluff.
- Interviewed Political Candidates for the 2016 General Election. Equal time was given to any candidate that requested it.

In addition to South Arkansas Today all Bluff City Radio stations broadcast many public service announcements helping area organization promote their activities and money raising events.

The Star City area Veteran's of Foreign Wars, American Legion, and Lincoln County Veteran's Association, would like to invite everyone to attend their Veteran's Museum Open House which will be held **this Friday** from 3:00--5:00 P.M. A short Veterans Day program will be held afterward at 5:00 P.M.

The museum is located on Highway 425 just south of Star City. Just look for the big tank and two field howitzers parked out front! They have some interesting items on exhibit in the museum and are looking for anything military related to enhance Their displays and honor our veterans. They would greatly appreciate anyone willing to donate or loan relevant artifacts to the museum. For more information or if you have something you'd like to donate to the Veteran's Museum, please contact Chris McGee at 870-628-1730 or 870-370-2785

Thunder's Day & Halloween Carnival

Miss Redfield Beauty Pageant

10 am

Applications for the Pageant
can be picked up at
TrendSetters

Redfield Community Center

Providing Games
Also Will Be Selling
Food, Drinks, & Chips
Costume Contest at 4pm
Ages: Newborn to 15 years old

The Redfield Masons

Will Be Selling
Hamburgers, Hot Dogs,
and Chicken

Redfield Chamber of Commerce

Will be Hosting Bingo
Event Long Bingo
Cards \$10

The Hog 98.1 fm



Official Radio Station
With DJ Billy Coble

Bounce House & Obstacle Course



Redfield Friends of the Animals

Hosting a Dog Costume Contest
Contact Amy Strawn at
TrendSetters For More Info



Proudly Presented



Redfield Community Center
Saturday October 29th, 2pm - 6pm

Want to Become a Vendor
or Need More Info?
Contact Tyler Seaton

Tyler.RedfieldChamber@gmail.com

& The Redfield Community Center

Thank You to our 2016 Chamber Members

Arkansas Pet Cremation, LLC (501) 712-1115 / Best Pest Control (501) 397-5222

Big Red #121 (501) 397-6200 / B & U Leasing (501) 397-2594

Exterminating Service Company (870) 536-9609 / Family Church of Redfield (501) 397-2444

J & S Homebuilders - Park Lakes (501) 860-4667 / Mammoth Orange (501) 397-2347

Masonic Lodge #700 (501) 484-4463 / Mikki Stanley & Tyler Seaton Insurance (501) 397-5050

Oliver Furniture (501) 888-1704 / River Road Baptist Church (501) 397-2576

Adel Malvern Corp (Subway) (870) 413-9867 / Redfield Authentic Mexican Restaurant (501) 541-6161

Redfield Community Center (501) 590-9556 / Redfield Mini Storage (501) 944-5382

Redfield Pharmacy (501) 397-5400 / Redfield Security Storage (501) 397-5400

Redfield Veterinary Hospital (501) 397-7575 / Relyance Bank (501) 397-6500

R & S Gas and Garage (501) 397-5131 / ShopWise (501) 397-6680

Sew 'n So Creations (501) 249-1994 / The Refuge (870) 489-7584 / TrendSetters (501) 397-6822

Allison & Bobby Turner / Allison Beasley & Family

Donna Oates & Family / Jessica Thompson & Family / Linda Banks & Family

Steve and Tina Roscoe & Family / Shollmeir Family Limited Partnership

This year, [Redfield Chamber of Commerce](#) and [Redfield Community Center](#) are Teaming up to combine Founder's Day & A Halloween Carnival into one big event.

Saturday, October 29th, 2pm-6pm

- ~Entertainment: DJ [Billy Coble](#) with [98.1 The Hog](#)
- ~Inflatables: bounce house and obstacle course
- ~Food: hamburgers, hot dogs, chicken, chips, drinks, & desserts
- ~Miss Redfield Pageant
- ~Carnival games
- ~Bingo
- ~Face painting - [Art & Soul](#) - with [Lauren](#)
- ~Costume contests for kids & dogs
- ~Cake walk

Timeline of Events:

- 10am - [Miss Redfield Pageant](#), applications at [TrendSetters LLC](#)
- 1pm - Dog costume contest, [Redfield Friends of the Animals](#)
- 2pm - Bingo
- 4pm - Costume contest, ages newborn to 15 years.

For vendor/booth information, or if you have any questions, please email Tyler at tyler.redfieldchamber@gmail.com.

Contact Information:

Hardin New Life Apostolic Church
Linda Aldridge 870-543-0711

Hardin New Life Apostolic Church Presents HNLAC Annual Pumpkin Patch

FOR IMMEDIATE RELEASE

Pine Bluff, Arkansas – Hardin New Life Apostolic Church will present their annual Pumpkin's with a Purpose Patch, taking place at **10608 Hwy 270 West** on **October 15th – October 31st**, and featuring **photo ops, concession stand, face painting, kid's game, pumpkin rolls, and caramel apples.**

Hardin New Life Apostolic Church is proud to bring **Pumpkin's with a Purpose Patch** to the **Hardin Community and surrounding areas** for the first time!

Pumpkin's with a Purpose support the missions of our church such as the building fund, youth department, ladies ministries, etc. Through Pumpkins USA, our Pumpkin's with a Purpose Patch supports the Native American. Their unemployment rate is over 40% and this project and others like it create roughly 25 fulltime jobs and 550 seasonal jobs for Native Americans. Our pumpkins are helping a lot of folks along the way to you!

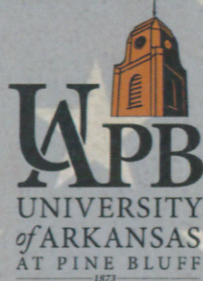
###

October 31 – PBPD Fall Festival

Bring the entire family to the Annual Fall Festival hosted by the Pine Bluff Police Department from 6:00 until 9:00PM at the Pine Bluff Convention Center.

There will be bounce houses, games, a hot dog eating contest, costume contest (for youth, teen and adults), cotton candy, snow-cones, popcorn, drinks, hot dogs, prizes and, of course, free candy!

This event is free and open to the public. For more information, call 870.730.2078.



WE HONOR THE
BRAVERY OF OUR
VETERANS

WHO WORE OUR NATION'S
UNIFORM.

WE HONOR THE MEMORY
OF THOSE WHO PAID THE
ULTIMATE
SACRIFICE.

WE HONOR THE
DEDICATION OF OUR
TROOPS WHO CONTINUE
TO PROTECT OUR
FREEDOM.

WE HONOR THE
STEADFASTNESS OF THE
FAMILIES WHO, THROUGH
THE AGES, HAVE GIVEN
SUPPORT, LOVE AND
TEARS.

MAY WE ALWAYS
REMEMBER.

~Author Unknown

YOU ARE CORDIALLY INVITED
TO ATTEND THE
UNIVERSITY OF ARKANSAS AT PINE BLUFF

VETERANS DAY *Celebration*

including an

**All American
PICNIC**

Thursday, November 10, 2016

2:00 P.M.

STEM Conference Center
1530 L.A. "Prexy" Davis Drive
Pine Bluff, Arkansas

R.S.V.P. 870-575-8216



HONORING ALL WHO SERVED
IN TIMES OF WAR - IN TIMES OF PEACE

October means the "Holiday Season" is just around the corner!

"Enchanted Land of Lights & Legends"

The Pine Bluff Festival Association, a not-for-profit that owns and operates the "Enchanted Land of Lights & Legends" is excited to announce that this Annual Award Winning Festival will be celebrating its **20th Season** this year with opening night festivities scheduled for Tuesday, November 15.

Greg Gustek, Executive Director, Will Smith, Park Coordinator and the Board of Directors want to thank all the sponsors and volunteers that have been part of the festival family for all these years. Obviously without the sponsors and the volunteers this festival would have not grown every year and became Arkansas' largest drive-thru of holiday lights ~~many years ago~~. Now recognized as one of the largest in the South it brings people from many cities in Arkansas and surrounding states to Pine Bluff, which by the way helps our economy.

It is not too late to become a sponsor and get your lighted sign by a great display for the over 100,000 annual attendance to see. Putting your name in front of that many people is good for businesses as well as organizations.

For those who still want to part of this festival but cannot afford a sponsorship we have the Memorial/Honor Star Campaign that people are already signing up for. For \$25.00 you can have a lighted Star tagged with a special person or organization name. You can tag that star either (In Honor Of) or (In Memory Of). We also put that name on a lighted billboard, list their name in the hand-out brochure that is passed out at the end of the drive-thru and we will send them an acknowledgement card if so request. Those forms are available by calling 870.536.7600 ~~and request one~~. Deadline is October 25th.

For more information on this awesome festival, becoming a sponsor or need a form you may contact Greg Gustek at 870.536.7600.

"African American Art"

Arts & Science Center for Southeast Arkansas

This is an exhibition of highlights from Permanent Collection of African American art. Features work from the Harlem Renaissance, Black Arts Movement, and contemporary work by nationally renowned African American artists such as Samella Lewis, Palmer Hayden, Romare Bearden, Elizabeth Catlett, and Benny Andrews and acclaimed faculty and students from the University of Arkansas at Pine Bluff such as John Miller Howard, Terrance Corbin, Kevin Cole, and Danny Campbell. The exhibition focuses on these artists' experiences here in America, here in the South, here in Arkansas, and here in Pine Bluff. For more information you may call the center at 870.536.3375, or visit their website at www.ASC701.org. Hurry though this show closes on October 15.

“Boo on the Bayou”

On Friday and Saturday October 28 & 29 from 6-9pm is the annual “Boo on the Bayou” at the Mike Huckabee Delta Rivers Nature Center in the Pine Bluff/Jefferson Regional Park. They will have games, inflatables, candy and prizes, the Scary Maze and the Trail of Terror. Don’t forget to wear your costume and bring the whole family for this safe, but scary two nights. Admission is free. There will be food vendors on-site.

This year, “Boo on the Bayou” is looking for community partners to help man the event. We are offering game booths to businesses, churches and organizations that want to come out and help with this free community event. Delta Rivers will provide the booth, games and prizes. All the Community Partner has to do is provide the person-power to run it. Each business, church or organization can wear their t-shirts with their logos and put up a banner to advertise their organization in the booth. They can pass out information about their group to the adults if they like. Everything to run the games will be provided; you just need 3-4 people each night to operate your game booth.

For more information on this exciting, but scary event please visit their website at www.deltarivers.com or call 870.534.0011

The 2016 Komen Race for the Cure is coming up Saturday, October 22nd in downtown Little Rock, and registration is now underway for Team JRM! Join us in showing our support for the fight against breast cancer. As an added bonus, Team JRM members will receive a JRM Race shirt along with the national Komen tshirt. Register at the Pine Bluff Wellness Center or online at www.komenarkansas.org.

PSA

OCT 18

45

8th

- Billy Dean - 8 -

SUZAN COC OCT 8th

MOD WRIGHT

WRIGHT

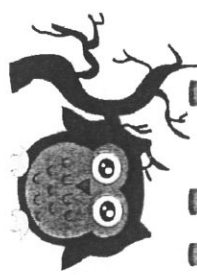
JAN'S Bath stores 8th -

October 1 – Lake Saracen Fall Festival & Sweet Potato Pie Bake-Off

Come out and enjoy a beautiful fall day on Saturday, October 1 from 10:00AM until 2:00PM at Saracen Landing, 200 Lake Saracen Drive. There will be pumpkin carving, face painting, hula hoop & double Dutch contest and arts & crafts. Also featured will be the 5th Annual Sweet Potato Pie Bake-Off in memory of Ms. Jimmie Lee Edwards. Judging for the bake-off begins at 10:30AM.

For more information, call the Pine Bluff Parks & Recreation Department at 870.536.0920.

PINE BLUFF POLICE FALL FESTIVAL



FUN ACTIVITIES FOR THE WHOLE FAMILY.
COME OUT IN YOUR FAVORITE COSTUME & HAVE A
TRICK OR TREATING GOOD TIME WITH
YOUR FRIENDS & POLICE OFFICERS.

GAMES, PRIZES, BOUNCE HOUSES, POPCORN, HOT DOGS, COTTON CANDY,
DRINKS, COSTUME CONTESTS & PLENTY OF CANDY!

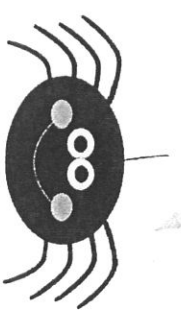
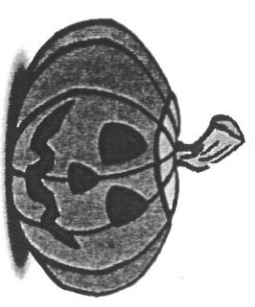


PINE BLUFF CONVENTION CENTER

MONDAY

October 31, 2016

6:00 P.M. – 9:00 P.M.



If your business or organization would like a free booth or table at the event...

13th ANNUAL



SEPTEMBER 24, 2016
SHERIDAN, ARKANSAS

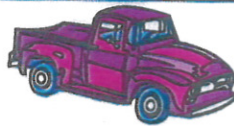
THE CAR SHOW WILL BE HELD IN THE MIDDLE SCHOOL PARKING LOT ON HWY.167 NORTH ACROSS FROM THE VALERO.

REGISTRATION IS 8:00am-NOON. ENTRY FEE IS \$20 FOR THE 1st CAR AND \$10 FOR EACH ADDITIONAL CAR. ALL PROCEEDS WILL BENEFIT CHARITIES IN GRANT COUNTY AND SURROUNDING AREA.

CONCESSIONS FOR FOOD AND DRINKS WILL BE PROVIDED BY THE LOCAL ROTC.

THERE WILL BE GAMES GOING ON AT THE SHOW.THERE WILL ALSO BE A 50/50 POT AND SILENT AUCTION. IT WILL BE A FUN DAY FOR THE WHOLE FAMILY.

MANY TROPHIES and CASH PRIZES will be awarded,including a \$50 GIFT CARD for the longest distance driven by entry.There will also be GOODIE BAGS and DASH PLAQUES (for the first 100 entrants.)



FOR MORE INFORMATION CONTACT
Jerry Cotton@ [870-942-3212](tel:870-942-3212)
Bill Gravenmire @ [501-888-1205](tel:501-888-1205)
Donna Hazzard @ [870-917-7967](tel:870-917-7967)
LIKE US ON FACEBOOK @MID-SOUTH CAR CLUB



September 26 - October 1

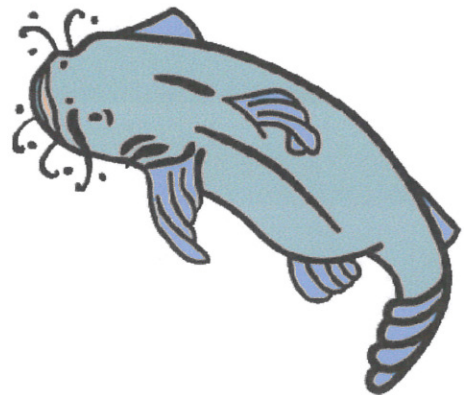
Southeast Arkansas District Fair & Rodeo.

Gates open to the general public at 5:00PM during Fair Week, starting Monday, September 26. The downtown parade will take place on Thursday, September 29 at 4:45PM, beginning at the intersection of 5th Avenue and Convention Center Drive and ending at Cherry Street.

Thursday, September 29, is Family Night at the Carnival, with "Armband Night," from 6:00 to 10:00PM. Thursday is also "Student & Senior Citizens Day," Gates open at 9:00AM. Friday, September 30, "Midnite Madness" from 10:00PM to 2:00AM. The Southeast Arkansas District Youth Talent Show, plus the Southeast Arkansas District Jr. Miss Fair Queen and Southeast District Miss Fair Queen pageants are scheduled for Saturday, October 1 at 7:00PM.

For more information, call Hestand Stadium at 870.535.2900.

Make plans now to join us at The Chamber's **64th Annual Farmers Appreciation Fish Fry** as we honor Jefferson County's agribusinesses and Jefferson County 201 Farm Family of the Year, the Steve Pharr family.



Thursday, October 20

Gates open @ 5 p.m.

Dinner served from 5:30 - 7:00 p.m.

@ Hestand Stadium (Highway 365 North)

Tickets: \$15 per person

Fish Fry Sponsorships are available for \$300, and you will receive:

- 5 complimentary tickets
- Your business name in the Fish Fry flyer and in all advertising materials
- Your own banner displayed at Hestand Stadium during the event

For more information about Fish Fry, contact Mandy Owens at 870-535-0110 or email mowens@pinebluffchamber.com.

Greg Gustek

From: "Thom Brown" <thom5162@gmail.com>
Date: Thursday, September 15, 2016 9:17 AM
To: <ggustek@pinebluff.com>

The Children's Advocacy Center of Pine Bluff is having a monthly drawing for a 30 oz Yeti rambler with the Center's logo. There will be a drawing each month for the next 11 months. Tickets are \$2 and can be purchased from any board member. For further information, contact Thom Brown @ 870-536-3347.

Really appreciate this Greg.

9/15/2016

We have two new museums committees that are looking for memorabilia and artifacts to fill their new museums. The first is called the Pine Bluff Grider Field Aviation Museum Committee, and their museum will be located at Grider Field. This museum will be taking us back into history of our famous Grider Field where over 10,000 WWII pilots were trained. Their contact number is 870.727.1317.

The other exciting museum is the Pine Bluff Military & Veterans Museum that needs memorabilia from all the different military services from World War I & II, Korean Conflict, Vietnam War and to the present. You may contact them at either 870.879.5321 or 870.883.0294.

*For Additional info you may contact the PBCMB at
870, 536, 7600*

In Concert

Jitters Morgan/ White Hall Community Ctr.
9801 Dollarway Rd. - 247-6964

Free Admission - Love Our Lord

Featuring



**Program
Emcee**



Saturday, Oct. 29th - 6:00pm

Enjoy an Evening of "Southern Gospel Music"



Save the Date

FALL FESTIVAL

1st Assembly of God in White Hall
801 W. Hoadley Rd

~FREE ADMISSION~
~FREE CANDY~FREE FUN AND GAMES~

SAT OCT 29TH 2016
5-8PM

~ACTIVITIES~

8 different inflatables, including an obstacle course, carnival games,
picture booth, cake walk, pumpkin painting, face painting,
temporary tattoo booth
Local contemporary Christian Band "A New Sound" will be playing
from 6-8pm

~FOOD~

Concession Available in the Fellowship Hall
Nacho's, Hot Dogs, cotton candy, popcorn and soda's
for sale





For more information, contact:

Lisa Grigg 870-883-0294

Oct. 7, 2016

FOR IMMEDIATE RELEASE

Museum sets barbeque

The new Pine Bluff Military and Veteran's Museum has scheduled a fund-raiser barbeque for Saturday, October 29, from 11:00 a.m. through 3:00 p.m. in the Oak Park Village parking lot in the 2500 block of West 28th Avenue in Pine Bluff. "We've received a lot of encouragement for success from our community as we get this museum underway," says Jack Jones, president of the museum's board of directors. "This barbeque gives folks the opportunity to come forward to support and take part in our startup."

The meal includes a smoked chicken leg quarter, potato salad, baked beans and bread and goes for \$10.00. Community donors supporting the event include Tyson Foods, Pine Bluff Foods; DAV Chapter 12, the Pine Bluff Daughters of the American Revolution, Oudin Properties and Wal-mart. "If folks are unable to attend the barbecue and want to make a donation, our mailing address is P.O. Box 2113, Pine Bluff AR 71613," said Lisa Grigg, member of the museum board.

Members of the museum fundraising committee are: Lisa Grigg, James House, Patsy Milligan, Carolyn DeVos, Kar Lynn Roberts, Travis Chisom, Lawrence Strickland, Larry Daniels and Darryl Sumaker.

#



200 East 8th Avenue
Pine Bluff, Arkansas
870-730-2000
chines@cityofpinebluff.com

Press Release

Monday, October 24, 2016

For More Information Contact:

Cynthia Hines

Phone: 870-730-2004

Fax: 870-730-2174

Email: chines@cityofpinebluff.com

Pine Bluff Animal Control will host the Howl'o'ween Spooktacular on Thursday, October 27th from 6:00 p.m. to 9:00 p.m. The event will have food, fun and games as well as a costume contest for kids and pets. A King and Queen will be selected from the best costumes. Sons of Solomon Lodge #5 will also be present for the scream seekers. This event is for both children and pets! If you don't have a pet, Animal Control has fur babies in need of forever homes.

###

For further information, please contact Cynthia Hines (870) 730-2004.



200 East 8th Avenue
Pine Bluff, Arkansas
870-730-2000
chines@cityofpinebluff.com

Press Release

September 30, 2016

For More Information Contact:

Cynthia Hines
Phone: 870-730-2004
Fax: 870-730-2174
Email: chines@cityofpinebluff.com

City Wide Clean Sweep

Pine Bluff, AR (September 30, 2016) – The City of Pine Bluff will have a City Wide Clean Sweep on Thursday, October 6, 2016. Citizens interested in participating in the sweep should contact the city by calling 870-730-2000 ext. 7 or by emailing frontdesk@cityofpinebluff.com. The sweep will begin at the Old Food King parking lot located at 16th and Cherry. Teams will disperse throughout the city and end the morning at the Pine Bluff Convention Center at 12:15. The target of the sweep is all major thoroughfares in the City. Lunch for registered volunteers will be served following the event beginning at 12:30.

###

For further information, please contact Cynthia Hines (870) 730-2004.