

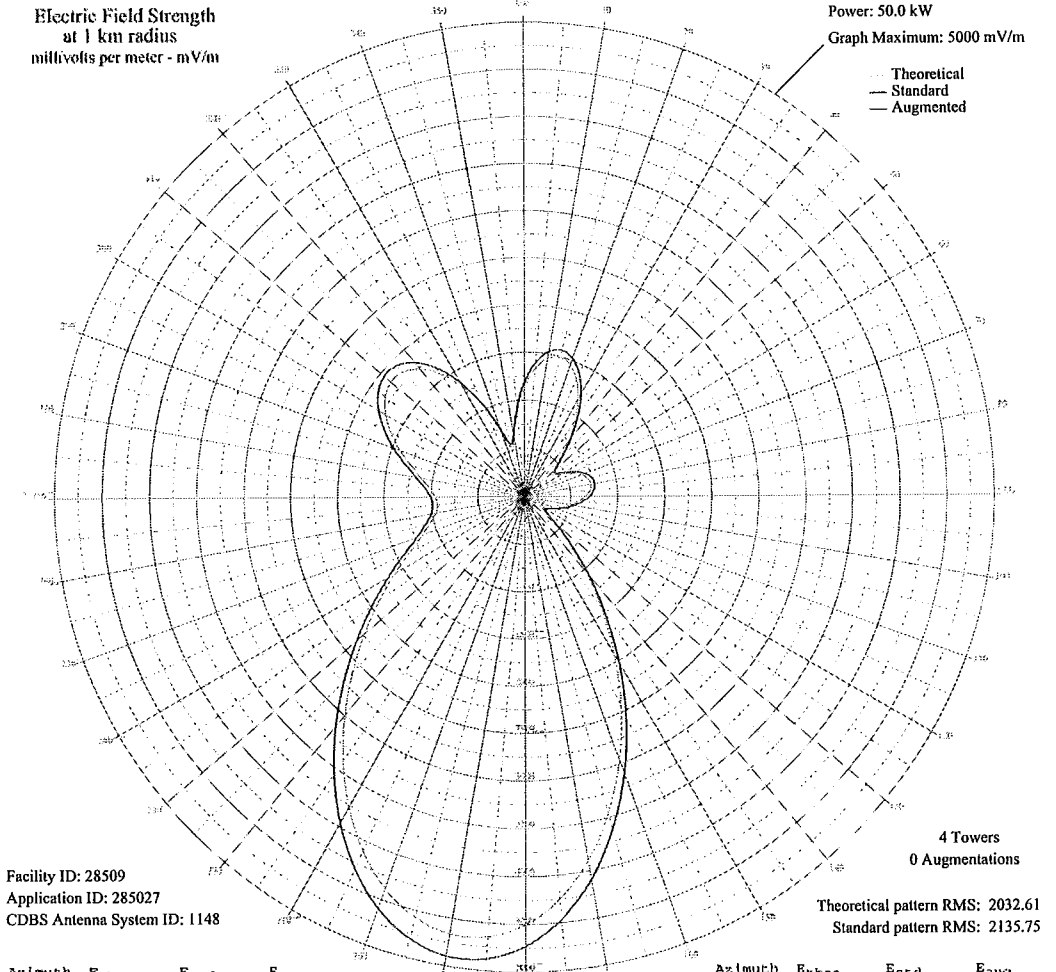
WKNR CLEVELAND, OH BL-19990512DC 850 kHz

Daytime

Electric Field Strength  
at 1 km radius  
millivolts per meter - mV/m

Power: 50.0 kW  
Graph Maximum: 5000 mV/m

--- Theoretical  
— Standard  
— Augmented



Facility ID: 28509  
Application ID: 285027  
CDBS Antenna System ID: 1148

4 Towers  
0 Augmentations

Theoretical pattern RMS: 2032.61  
Standard pattern RMS: 2135.75

Azimuth	E <sub>theo</sub>	E <sub>std</sub>	E <sub>aug</sub>
0	1124.79	1183.76	
5	1327.41	1396.09	
10	1452.84	1527.60	
15	1493.16	1569.88	
20	1450.89	1525.56	
25	1336.26	1405.37	
30	1165.12	1226.01	
35	957.47	1008.55	
40	737.33	778.36	
45	536.24	568.76	
50	403.32	431.04	
55	391.31	418.66	
60	472.68	502.77	
65	574.79	608.85	
70	658.62	696.20	
75	709.85	749.66	
80	724.84	765.31	
85	705.42	745.04	
90	657.05	694.57	
95	587.86	622.46	
100	507.53	538.94	
105	425.57	454.02	
110	348.74	374.89	
115	280.79	305.59	
120	234.69	259.20	
125	262.47	287.07	
130	412.72	440.74	
135	671.54	709.68	
140	1020.07	1074.09	
145	1444.01	1518.34	
150	1925.38	2023.24	
155	2440.42	2563.70	
160	2960.61	3109.68	
165	3455.08	3628.72	
170	3893.60	4089.07	
175	4249.71	4462.92	

The theoretical pattern is used to create the standard pattern. Augmentations (if any) expand the standard pattern in specified directions. See Sections 73.150 and 73.152 of the FCC's Rules.

AM coverage may not mirror the pattern shown here. Additional factors such as ground conductivity or skywave propagation affect how far the AM signal will travel.

Patterns for stations outside the USA are based on notified parameters.

AM directional patterns created before 1982 used units of 1 mV/m at 1 mile, not one kilometer. The pattern values on such plots at 1 mile will be 0.62137 of the values listed here. Measured pattern values may vary from values shown here.

Plot is best printed on 11" by 17" or larger paper.

24 Dec 2007

Prepared by Audio Division, Media Bureau  
Federal Communications Commission

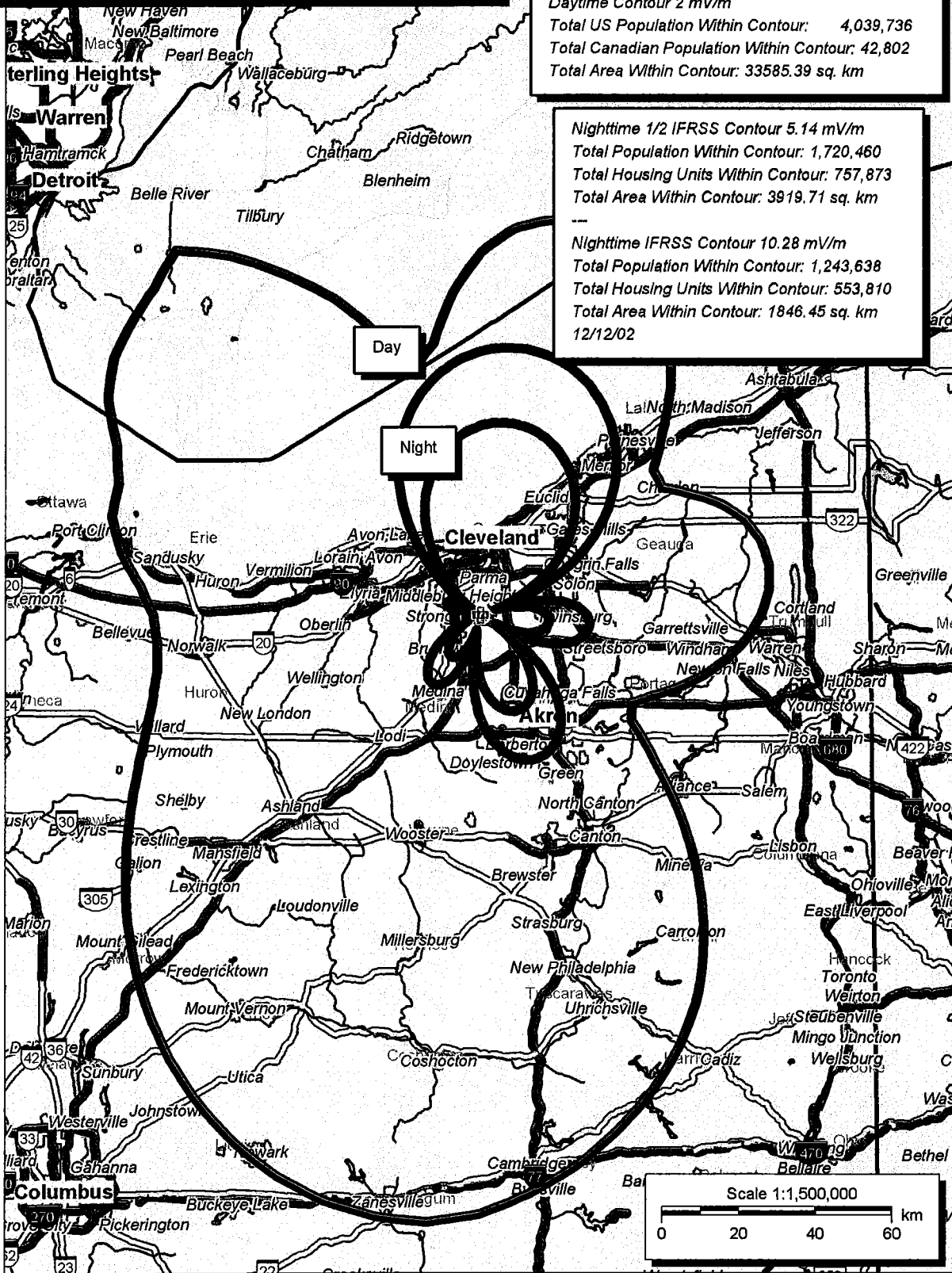
Azimuth	E <sub>theo</sub>	E <sub>std</sub>	E <sub>aug</sub>
180	4503.25	4729.10	
185	4642.16	4874.93	
190	4663.15	4896.97	
195	4571.36	4800.60	
200	4379.14	4598.80	
205	4104.19	4310.15	
210	3767.49	3956.68	
215	3391.25	3561.72	
220	2997.22	3148.10	
225	2605.32	2736.77	
230	2232.87	2345.89	
235	1894.08	1990.40	
240	1599.80	1681.71	
245	1357.36	1427.49	
250	1170.40	1231.54	
255	1038.96	1093.87	
260	960.49	1011.72	
265	931.76	981.64	
270	950.38	1001.13	
275	1014.20	1067.94	
280	1118.82	1177.50	
285	1255.44	1320.66	
290	1410.65	1483.36	
295	1567.45	1647.78	
300	1706.73	1793.86	
305	1808.96	1901.11	
310	1856.10	1950.56	
315	1833.62	1926.98	
320	1732.67	1821.08	
325	1552.19	1631.78	
330	1301.14	1368.55	
335	1002.35	1055.53	
340	705.50	745.32	
345	530.20	562.48	
350	621.16	657.15	
355	869.16	916.15	

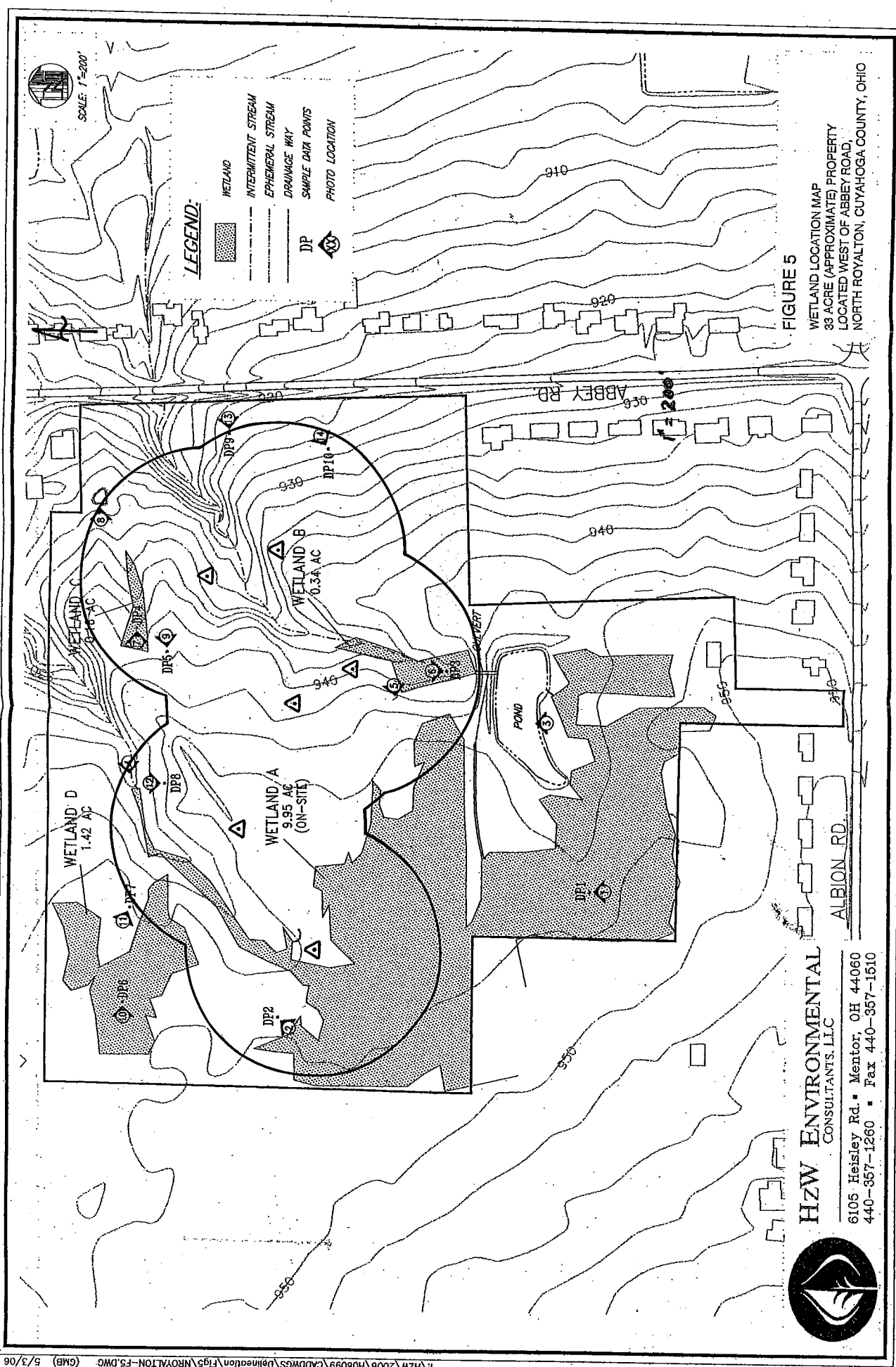
# WKNR 850 AM, Cleveland, OH.

Population Databases: 2000 US Census  
1996 Canadian Census

Daytime Contour 2 mV/m  
Total US Population Within Contour: 4,039,736  
Total Canadian Population Within Contour: 42,802  
Total Area Within Contour: 33585.39 sq. km

Nighttime 1/2 IFRSS Contour 5.14 mV/m  
Total Population Within Contour: 1,720,460  
Total Housing Units Within Contour: 757,873  
Total Area Within Contour: 3919.71 sq. km  
---  
Nighttime IFRSS Contour 10.28 mV/m  
Total Population Within Contour: 1,243,638  
Total Housing Units Within Contour: 553,810  
Total Area Within Contour: 1846.45 sq. km  
12/12/02





**HZW ENVIRONMENTAL**  
CONSULTANTS, LLC

6105 Heisley Rd. • Mentor, OH 44060  
440-367-1260 • Fax 440-367-1510

