



INTEROFFICE MEMORANDUM

DATE: October 5, 2017
TO: PUBLIC FILE
FROM: Kathleen Kramer, Research Analyst/Program Director
SUBJECT: FCC Commercial Limits within Children's Programming

As a general rule, the Children's Television Act and the FCC's rules impose the following commercial limits:

1. Programming produced and broadcast primarily for children 12 years old and younger may not contain more than 10.5 minutes of total commercial matter per clock hour on weekends, and no more than 12.0 minutes of total commercial matter per clock hour on weekdays.
2. Children's programming may not direct viewers to an internet website unless the website offers a substantial amount of bona fide program-related or other non-commercial purposes (that is, e-commerce or advertising); the website's home page and other menu pages clearly distinguish between the website's commercial and non-commercial sections; and the pages of the website to which viewers are directed is not used for e-commerce, advertising, or other commercial purposes (that is, the page has no link labeled "store" or direct links to other pages with commercial material).
3. Neither children's programming nor commercials aired during children's programming may display internet website addresses that direct the viewer to internet websites that utilize the program's characters to advertise, promote, or sell products or services, or that sell products that feature a character appearing in the program.

After review of internal channel records and documentation provided by program suppliers, KTNV hereby certifies that it complied fully with the FCC's commercial limits with respect to all children's programs broadcast during this quarter that are subject to those requirements. Details are below.

KTNV-TV did not include programming produced and broadcast primarily for children 12 years old and younger on Channel 13.1.

Laff TV Network which KTNV-TV broadcasts on Channel 13.2 did not include any programming produced and broadcast primarily for children 12 years old and younger.

Grit TV Network which KTNV-TV broadcasts on Channel 13.3 did not include any programming produced and broadcast primarily for children 12 years old and younger.

Signed: Kathleen Kramer
Kathleen Kramer



LITTON'S WEEKEND ADVENTURE

COMMERCIAL LOAD AND WEB SITE REPORT

3rd QUARTER 2017

THE FOLLOWING IS A LIST OF ALL LITTON'S WEEKEND ADVENTURE PROGRAMS PROVIDED TO ABC AFFILIATES DESIGNED TO MEET THE EDUCATIONAL/INFORMATIONAL REQUIREMENT FOR CHILDREN THIRTEEN TO SIXTEEN YEARS OLD DURING THE THIRD QUARTER OF 2017. BECAUSE THESE PROGRAMS ARE ORIGINALLY PRODUCED FOR AND DIRECTED AT CHILDREN THIRTEEN TO SIXTEEN YEARS OLD, NEITHER THE COMMERCIAL LIMITS NOR THE WEBSITE RULE APPLY (SEE 47 C.F.R. § 73.670 (Note 2)). THIS CERTIFIES THAT ALL OF THESE PROGRAMS WERE FORMATTED (IN THE ORDER AND AT THE TIMES INDICATED) WITH THE FOLLOWING COMMERCIAL LOADS.

Children's Weekend Programs (series)

1. Program: Jack Hanna's Wild Countdown
Duration: Half-hour
Number of Network Commercial Minutes: 8:00
2. Program: Ocean Treks with Jeff Corwin
Duration: Half-hour
Number of Network Commercial Minutes: 8:00

3. Program: Sea Rescue

Duration: Half-hour

Number of Network Commercial Minutes: 8:00

4. Program: The Wildlife Docs

Duration: Half-hour

Number of Network Commercial Minutes: 8:00

5. Program: Rock the Park

Duration: Half-hour

Number of Network Commercial Minutes: 8:00

6. Program: Outback Adventures with Tim Faulkner

Duration: Half-hour

Number of Network Commercial Minutes: 8:00

Children's Weekend Specials

None

Children's Weekday Programs

None

Children's Weekday Specials

None

* * * * *

ALTHOUGH THESE PROGRAMS ARE NOT SUBJECT TO THE WEBSITE RULE BECAUSE THEY ARE PRODUCED FOR AND AIMED AT CHILDREN 13-16, NONETHELESS LITTON HAS ENDEAVORED TO COMPLY WITH THE RESTRICTION ON URLs DISPLAYED WITHIN SHOWS (SEE SECTIONS 73.670(b), (c) AND (d) OF THE RULES OF THE FEDERAL COMMUNICATIONS COMMISSION, 47 C.F.R. § 73.670(b), (c) AND (d)).

NONE OF THESE PROGRAMS CONTAINED ANY URLs, WITH THE POSSIBLE EXCEPTION OF (a) FICTIONAL URLs IN PROGRAMMING, (b) URLs OF COMMERCIAL-FREE WEBSITES THAT SATISFY 47 C.F.R. § 73.670(b), OR (c) URLs, NOT UNDER THE CONTROL OF THE LICENSEE, OF NON-PROFIT OR GOVERNMENT ENTITIES WITHIN PUBLIC SERVICE ANNOUNCEMENTS AIRED ON BEHALF OF THOSE ENTITIES, OR MEDIA COMPANIES IN PARTNERSHIP WITH THOSE ENTITIES.

Litton Entertainment
9/1/17



COMMERCIAL LIMITS AND WEBSITE RULES COMPLIANCE CERTIFICATION THIRD QUARTER 2017

During the third quarter of 2017 (July 1, 2017 – September 30, 2017), the following Educational/Informational programs tailored to meet the requirements for teens 13 – 16 years old appeared on the Grit Network. As a result of these programs originally being created for and directed at teens 13 and above, the rules (47 C.F.R. § 73.670) for commercial limits and websites do not apply.

E/I Programs (series)

Program: Jack Hanna's Wild Countdown (July 1, 2017 – September 30, 2017)

Time: Saturdays 10:00 AM - 10:30 AM ET

Duration: 30 minutes

Rating: TV-PG E/I

Program: Jack Hanna's Wild Countdown (July 1, 2017 – September 30, 2017)

Time: Saturdays 10:30 AM – 11:00 AM ET

Duration: 30 minutes

Rating: TV-PG E/I

Program: The Brady Barr Experience (July 1, 2017 – September 30, 2017)

Time: Saturdays 11:00 AM - 11:30 AM ET

Duration: 30 minutes

Rating: TV-G E/I

Program: Sea Rescue (July 1, 2017 – September 30, 2017)

Time: Saturdays 11:30 AM – 12:00 PM ET

Duration: 30 minutes

Rating: TV-PG E/I

Program: Sea Rescue (July 1, 2017 – September 30, 2017)

Time: Saturdays 12:00 PM – 12:30 PM ET

Duration: 30 minutes

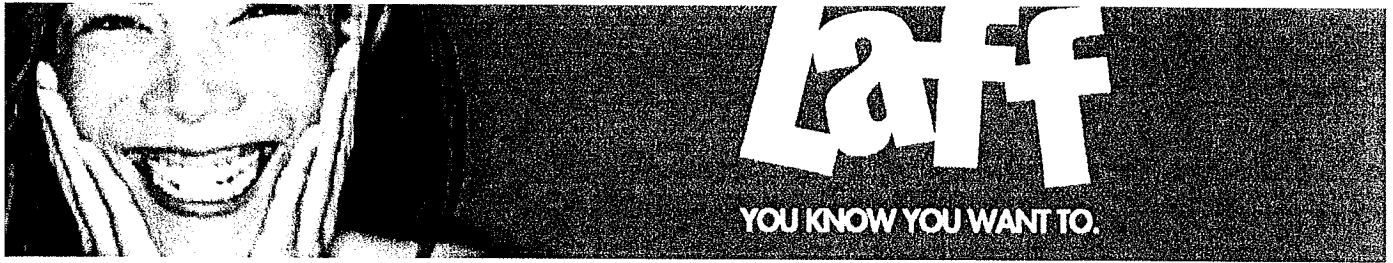
Rating: TV-PG E/I

Program: Rock The Park (July 1, 2017 – September 30, 2017)

Time: Saturdays 12:30 PM – 1:00 PM ET

Duration: 30 minutes

Rating: TV-PG E/I



COMMERCIAL LIMITS AND WEBSITE RULES COMPLIANCE CERTIFICATION THIRD QUARTER 2017

During the third quarter of 2017 (July 1, 2017 – September 30, 2017), the following Educational/Informational programs tailored to meet the requirements for teens 13 – 16 years old appeared on the LAFF Network. As a result of these programs originally being created for and directed at teens 13 and above, the rules (47 C.F.R. § 73.670) for commercial limits and websites do not apply.

E/I Programs (series)

Program: Jack Hanna's Animal Adventures (July 1, 2017 – September 30, 2017)
Time: Saturdays 10:00 AM - 10:30 AM ET
Duration: 30 minutes
Rating: TV-G E/I

Program: Outback Adventures With Tim Faulkner (July 1, 2017 – September 30, 2017)
Time: Saturdays 10:30 AM - 11:00 AM ET
Duration: 30 minutes
Rating: TV-G E/I

Program: Outback Adventures With Tim Faulkner (July 1, 2017 – September 30, 2017)
Time: Saturdays 11:00 AM - 11:30 AM ET
Duration: 30 minutes
Rating: TV-G E/I

Program: Rescue Me With Dr. Lisa (July 1, 2017 – September 30, 2017)
Time: Saturdays 11:30 AM - 12:00 PM ET
Duration: 30 minutes
Rating: TV-PG E/I

Program: Food For Thought With Claire Thomas (July 1, 2017 – September 30, 2017)
Time: Saturdays 12:00 PM - 12:30 PM ET
Duration: 30 minutes
Rating: TV-G E/I

Program: Food For Thought With Claire Thomas (July 1, 2017 – September 30, 2017)
Time: Saturdays 12:30 PM - 1:00 PM ET
Duration: 30 minutes
Rating: TV-G E/I