



SDPB
Magazine

January 2016



GOING OUT IN STYLE

THE FINAL SEASON
DOWNTON ABBEY

SUN JAN 3, 8/7 MT
MASTERPIECE



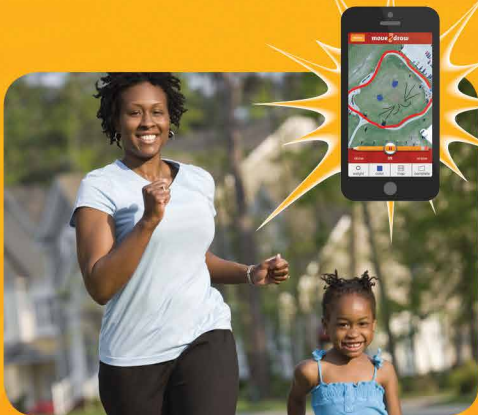
Get ready to get *fit*!

Through *fit*, you can access and experience a suite of resources for parents and kids, all designed to help families make *fit* choices and stay healthy.



For parents

The Sanford *fit*/WebMD website gives parents the tools and resources they need to become healthy role models. Log on to explore healthy recipes, *fit* family challenges and connect with a community of parents and experts for support. Go to webmd.com/parenting/raising-fit-kids.



For kids

The website also offers an experience just for kids. Let them log on and discover entertaining and educational games, videos and challenges. No matter their age, the site has something for all kids to help them make *fit* choices every day and stay *fit* for life. Go to fit.sanfordhealth.org.



On the go

Take *fit* with you wherever you go! Though a series of free and engaging apps, you are never far away from *fit* activities. MOVE2Draw connects fun, friends and *fit* and is a simple and interactive way for kids to move and create their own unique drawings. eMOODicam helps not only capture the moment but also the emotion by allowing kids to bring their feelings to life and share with their friends in an easy-to-use app. Download in your app store today!

Visit us at sanfordhealth.org,
Keyword: *fit*



OPENING GOVERNMENT & INFORMING CITIZENS

SDPB'S OMNICHANNEL STATE LEGISLATIVE COVERAGE



The 91st South Dakota Legislative Session opens Tuesday, January 12 at 1pm CT (Noon MT) with the Governor's State of the State Address in Pierre. Once again, SDPB will offer the most comprehensive legislative coverage in the state, reporting via SDPB Television, Radio and Online from start-to-finish of this year's lawmaking session.

SDPB Radio

SDPB Radio will be on hand for the opening of the legislative session. Throughout the session SDPB Capitol Reporter Jenifer Jones will be on-hand in Pierre for daily updates and reports. In addition, the SDPB Radio News Team, including News Director Cara Hetland and reporters Gary Ellenbolt, Kealey Bultena and Charles Michael Ray, will file stories about legislative happenings, and new **Dakota Midday** host Lori Walsh will regularly feature conversations with lawmakers and South Dakotans impacted by legislation.

SDPB Television

Watch **Statehouse** on SDPB1 each Friday at 9pm (8 MT) for a legislative wrap-up of news and events from the week in Pierre.

Meanwhile, SDPB2 airs **Statehouse House** – live coverage from the House Floor each day of the legislative session at 2pm (1 MT) and at 1pm (Noon MT) the last day of the legislative week. Directly following Statehouse House on SDPB2, viewers can tune in for **Statehouse Senate** – recorded coverage from the afternoon's session on the Senate Floor. Finally, SDPB2 broadcasts live **State Press Briefings** when Republicans, Democrats and the Governor address the media and constituents. The press briefings air on the last day of the legislative week, starting at 9:30am (8:30 MT). Check listings for details.

South Dakota Focus

Host Stephanie Rissler is joined by legislative leaders live in Pierre Thursday, Jan. 14, at 8pm (7 MT) on SDPB1. Viewers are encouraged to join the live program discussion with their comments and questions by calling 877-825-5788 or by emailing sdfocus@sdpb.org.

SDPB's legislative coverage is supported by the South Dakota Bar Foundation and by the Credit Union Association of the Dakotas, Missouri River Energy Services and SDN Communications.



Stephanie Rissler and Cara Hetland report from the Capitol.

State of the State - Governor Dennis Daugaard
Tuesday, January 12, 1pm (Noon MT)
Live on SDPB1, SDPB Radio and streaming online at SDPB.org
Encore Presentation on SDPB1: Tuesday, January 12, 10 pm (9 MT)

State of the Judiciary - Chief Justice David E. Gilbertson, South Dakota Supreme Court
Wednesday, Jan. 13, Noon (11 MT)
Live on SDPB2 and online at SDPB.org

South Dakota Focus with Legislative Leaders
SDPB1: Thursday, Jan. 14, 8pm (7 MT)

DECONSTRUCTING DOWNTON ABBEY

THE HOUSE THAT MASTERPIECE BUILT

It's the moment Masterpiece devotees have been waiting for. **Downton Abbey** enters its final season with the premiere of Season 6 on Sunday, January 3 at 8pm (7 MT) on SDPB1.

The final season comes not a minute too soon for legions of faithful viewers who have longingly awaited a return to the dramatic, decorous universe of the aristocratic Crawley family and their contingent of (mostly) dutiful servants. Since its British premiere in 2010 and its 2011 stateside debut, *Downton Abbey* has achieved a level of critical and popular success by which forthcoming period dramas are destined to be measured. The production has amassed dozens of BAFTA, Emmy and Golden Globe nominations and awards and copped the Guinness World Record for television's "Highest Critical Review Ratings." In the U.S., the English entertainment import was the second most-watched program on Super Bowl Sunday and is the most-watched PBS program ever.

Yankee fervor for *Downton* runs wide and deep. The Edwardian-era world of Lord and Lady Grantham, their adult daughters and their personal attendants has inspired in certain U.S. circles a revival of the high-society 20th century British aesthetic. From demure sets of "Lady Mary Pajamas," to manor house replica lamps, online outfitters proffer early 1900s apparel and household furnishings. Self-professed American fans of the show include rapper P. Diddy, who confesses to crying at the deaths of favorite characters, and comedian Patton Oswalt, who hosts *Downton Abbey* viewing parties. And while



Photos: BBC and MASTERPIECE

Ladies Edith, Cora, and Mary Crawley make and break social codes.

American football may not yet rank as a national sport in the U.K., the series will be redolently represented in Pasadena, CA as a florally festooned model of Highclere Castle (the real-life setting for *Downton Abbey*) floats its way down the 2016 Rose Bowl parade route.

Americans are simply mad for *Downton Abbey*. But as Carson himself might inquire, ample eyebrows vaulted toward the estate's 50-foot ceilings: "Why on Earth all the fluff and hullabaloo?"

Callie Hisek, who teaches acting, directing, and theatre history in the Department of Theatre at the University of South Dakota, suggests *Downton Abbey's* main appeal is in its twin offering of escapism and relatable characters. According to Hisek, "*Downton Abbey* is historical, fictional, honest, and portrays a life that many of us dream about being a part of – even if only for a moment. Each of the characters in this show represents the best and worst of what it means to be human, but again, they are honest."

Like its popular 1970s Masterpiece predecessor, *Upstairs Downstairs*, *Downton Abbey* dramatizes, to great voyeuristic success, the interdependent lives of the gentry and the men and women who dress, feed, and, at times, collude and couple with them. "The show also capitalizes on the vicarious pleasures of seeing how the other half lives—both the luxury of the Crawleys and their milieu and the secret lives



Nicole Flynn.



Callie Hisek.

of the underclass," says Assistant Professor of English Nicole Flynn, who specializes in twentieth century British literature and theatre at South Dakota State University. "We get to occupy both positions in the class structure simultaneously while being transported back to a beautiful and exciting moment in history. What's not to love?"

The blurring of the societal delineations that separate the elite from the staff at *Downton*, set amidst the historical scrim of a rapidly modernizing England, provide an agile plot device and lend irresistible tension to the narrative frame. Storylines sparkle with mischief and possibility when social order runs askew and longstanding class boundaries are busted: Tom Branson marries Sybil Crawley and no longer chauffeurs the family car but drives business decisions for the estate. Dirty secrets are divulged and amorous capers compacted as maids and ladies conspire in dressing room mirrors. Some British critics have chided



Mr. Carson and Miss Hughes help manage the manor house upstairs and down.

writer and creator Julian Fellowes for distorting an entrenched class system by portraying implausibly sympathetic upper-class characters colluding with servants. While Hisek says she understands the point, ultimately the theme of shared humanity trumps social class divisions. “This idea can be seen in the relationship between Robert and Bates,” says Hisek. “They served together in the war and even though class and rank still play a part in service, when someone saves your life, is there for you in a time of need or crisis, you don’t forget that. Robert believed in Bates because of Bates’ character. That is at the core of all of this. Yes, there is rank, class, wealth, and power – but in the end all of these characters are humans. You can never overlook loyalty, faith, love, and companionship.”

For Flynn, the vanishing Victorian era and emerging modernism make for especially engaging television. “The dramatic changes that occurred in England in the early twentieth century make it one of the most exciting periods to explore,” says Flynn. “In only a few decades, everything changed. All the new technologies—electricity, cars, trains, telegraphs, telephones, gramophones, moving pictures, birth control, penicillin, ammonium nitrate (for fertilizer to feed the world or chemical weapons to destroy it)—created shockwaves throughout the culture, revolutionizing the way people communicated, thought, and lived.”

Moreover, according to Flynn, *Downton Abbey* captures the early 20th



Who’s serving whom? Valet Mr. Bates, Robert Crawley, Earl of Grantham; former chauffeur Mr. Tom Branson, and butler-of-all-trades Mr. Mosely.

century spirit of breaching convention. “Questioning the unquestionable is a theme introduced at the very beginning of the show and this is the heart of modernization,” says Flynn. “The show constructs many situations that beckon this kind of questioning: Mary, after eluding her arranged marriage to Patrick, embarks on a five season quest to choose her own mate; when Rose’s parents choose to divorce, we sense the social and professional devastation that this decision could usher in. The show repeatedly demonstrates why such changes occurred and the effect they had on a variety of individuals within society.”

Additionally, as a contemporary television production, *Downton Abbey* defies some outmoded storytelling tropes by normalizing characters often overlooked or exaggerated for effect. Elders have emotional lives: dethroned Russian prince Igor Kuragin carries a long-standing torch for the Dowager Countess; Dr. Clarkson yearns for Isobel Crawley. Meanwhile, underbutler Thomas Barrow possesses dimension and motivation beyond his sexuality. “Everyone knows ‘what’ he is and though they dislike him, this is, on the surface anyway, unrelated to his sexuality,” says Flynn. In a sense, the contemporary production mirrors mores unraveling during the period it depicts. “The Edwardian

Era could be seen as progressive, or at least the new ruling class was less severe in their moral conduct,” says Hisek. “It is because of this that when issues of race, gender, LGBT, and class emerged they were handled differently.”

Both Hisek and Flynn appreciate *Downton Abbey*’s stagecraft and attention to the finer points of the era. “Something that audiences have come to love about *Downton Abbey* is its authentic nature and believability,” says Hisek. “When working on period shows, actors, directors, and designers take great care in creating that life.” Flynn adds: “In particular, I think the fashion draws the viewer in with its breadth and detail, deftly adds dimension to characters, and presents a tidy metaphor for the social and economic divisions and transformations of the period.”

Julian Fellowes has remarked, “the spine of the story is love,” and executive producer Gareth Neame has said, “Relationships [in *Downton Abbey*] are more straightforward. There was no texting or Tinder.” As the lords, ladies, maids and manservants of the house go forth into a future world uncertain to them but known to us, viewers have one last season to admire them in all their finery and avarice, adversity and courage.

SDPB-TV Daytime Programming


Primetime listings on pages 8-15

SDPB1	WEEKDAYS	SATURDAYS	SUNDAYS
5am / 4 MT	Newsline	Beads, Baubles & Jewels	Dakota Life ▼
5:30/4:30 MT	Yoga	Dakota Life ▼	Dinosaur Train
6am / 5 MT	BBC World News	Barney & Friends	Sesame Street
6:30/5:30 MT	Wild Kratts	Caillou	Daniel Tiger's Neighborhood
7am / 6 MT	Curious George	Curious George	Curious George
7:30/6:30 MT	Curious George	Curious George	Curious George
8am / 7 MT	Daniel Tiger's Neighborhood	Wild Kratts	Wild Kratts
8:30/7:30 MT	Daniel Tiger's Neighborhood	Wild Kratts	Wild Kratts
9am / 8 MT	Arthur	Clifford's Puppy Days	Sid the Science Kid
9:30/8:30 MT	Peg + Cat	Bob the Builder	WordGirl
10am / 9 MT	Dinosaur Train	It's Sew Easy	Arthur
10:30/9:30 MT	Dinosaur Train	Fons & Porter's Love of Quilting	Religion & Ethics Newsweekly
11am / 10 MT	Super Why!	Quilt in a Day	McLaughlin Group
11:30/10:30MT	Thomas & Friends	Sewing with Nancy	Market to Market
Noon / 11 MT	Sesame Street	Quilting Arts	Contours/Ain't it Cool w/ Harry Knowles
12:30/11:30MT	Cat in the Hat Knows a Lot about That	Rough Cut – Woodworking	Motorweek
1pm / Noon MT	Curious George	Woodsmith Shop	Repeat of previous Thursday 8pm (7 MT)
1:30/12:30 MT	Curious George	This Old House Hour	
2pm / 1 MT	Educational Program		
2:30/1:30 MT	Arthur	Martha Bakes	Documentary, news, science, nature
3pm / 2 MT	Odd Squad	Cook's Country	
3:30/2:30MT	Odd Squad	The Victory Garden's Edible Feast	
4pm / 3 MT	Wild Kratts	Prairie Yard & Garden	Rick Steves' Europe
4:30 / 3:30 MT	Cyberchase	America's Heartland	Nature Adventures ▼
5pm / 4 MT	Martha Speaks		
5:30 / 4:30 MT	Nightly Business Report	Classic Gospel	Antiques Roadshow

SDPB2	MONDAYS	TUESDAYS	WEDNESDAYS	THURSDAYS	FRIDAYS	SATURDAYS	SUNDAYS					
5am / 4 MT	Washington Week	Global 3000	To the Contrary	Scully/World Show	Well Read	Religion & Ethics	To the Contrary					
5:30/4:30 MT	Religion & Ethics	Focus on Europe	American Forum	Second Opinion	Closer to Truth	Wealthtrack	Washington Week					
6am / 5 MT	Newsroom Tokyo	Newsroom Tokyo	Newsroom Tokyo	Newsroom Tokyo	Newsroom Tokyo	To the Contrary	McLaughlin Group					
6:30/5:30 MT						McLaughlin Group	Open Mind					
7am / 6 MT	Documentary, news, science, nature & repeats of previous day's SDPB2 primetime programming	Documentary, news, science, nature & repeats of previous day's SDPB2 primetime programming	America ReFramed followed by documentary, news, science, nature & repeats of previous day's SDPB2 primetime programming	Documentary, news, science, nature & repeats of previous day's SDPB2 primetime programming	Documentary, news, science, nature & repeats of previous day's SDPB2 primetime.	Documentary, news, science, nature & repeats of previous day's SDPB2 primetime programming	Focus on Europe					
7:30/6:30 MT							Global 3000					
8am / 7 MT							America ReFramed					
8:30/7:30 MT												
9am / 8 MT												
9:30/8:30 MT												
10am / 9 MT							Local USA	Wealthtrack				
10:30/9:30 MT	News/ Documentary	Religion & Ethics										
11am / 10 MT	Tavis Smiley	Tavis Smiley	Tavis Smiley	Tavis Smiley	Tavis Smiley		Documentary, news, science, nature					
11:30/10:30MT												
Noon / 11 MT	Washington Week	Global 3000	To the Contrary	Scully/World Show	Well Read	History, Documentary & repeats of top programming from previous week						
12:30/11:30MT	Religion & Ethics	Focus on Europe	American Forum	Second Opinion	Closer to Truth		To the Contrary					
1pm / Noon MT	Local documentaries ▼	Local documentaries ▼	Local documentaries ▼	Local documentaries ▼	Local documentaries ▼		Washington Week					
1:30/12:30 MT							Statehouse House (Live) ▼	Statehouse House (Live) ▼	Statehouse House (Live) ▼	Statehouse House (Live) ▼	Statehouse House (Live) ▼	Washington Week
2pm / 1 MT							Statehouse Senate (Recorded) ▼	Statehouse Senate (Recorded) ▼	Statehouse Senate (Recorded) ▼	Statehouse Senate (Recorded) ▼	Statehouse Senate (Recorded) ▼	McLaughlin Group
2:30/1:30 MT								Open Mind				
3pm/2 MT								Focus on Europe				
3:30/2:30MT							Global 3000					
4pm / 3 MT	Newsline	Newsline	Newsline	Newsline	Newsline	To The Contrary						
4:30/ 3:30 MT	DW News	DW News	DW News	DW News	DW News	Washington Week	Documentary					
5pm / 4 MT	Local USA	Documentary	Documentary	Documentary	Documentary	NewsHour Wkend	NewsHour Wkend					
5:30/ 4:30 MT	On Story					Charlie Rose	Dakota Life ▼					

Create – SDPB3 Programming

SDPB3	SUNDAY & WEDNESDAY		MONDAY & FRIDAY	TUESDAY & THURSDAY	SATURDAY THEME DAYS
5am / 4 MT	Fit 2 Stitch		Quilting Arts	Knit & Crochet Now!	January 2 "Eat the Right Thing"
5:30/4:30 MT	Grand View		Paint This with Jerry Yarnell	Joy of Painting	
6am / 5 MT	One Plate at a Time/ Pati's Mex. Table		Sara's Weeknight Meals	Taste the Islands w/ Chef Irie	January 9 "Sprouting Up Flavor"
6:30/5:30 MT	Secrets of a Chef		Modern Irish Food/ Seafood Cook-Off	Home Chef/ Garden to the Table (1/19)	
7am / 6 MT	Moveable Feast		John Besh's Family Table	Dining with the Chef	January 16 "Craft Your Kitchen"
7:30/6:30 MT	Ciao Italia		New Scandinavian Cooking	Christina Cooks	
8am / 7 MT	Curious Traveler		Grannies On Safari	Travels & Traditions	January 23 "Cold Weather Comfort"
8:30/7:30 MT	Travels to the Edge		Travelscope	Painting the Town with Eric Dowdle	
9am / 8 MT	Berenstain Bears/Ask This House		This Old House	Woodwright's Shop	January 30 "Winter Out, Cruise In"
9:30/8:30 MT	American Woodshop		Rough Cut – Woodworking	Woodsmith Shop	
10am / 9 MT	Growing Greener World/Garden Smart		P. Allen Smith's Garden Home	Victory Garden's Ediblefeast	January 30 "Winter Out, Cruise In"
10:30/9:30 MT	Scrapbook Soup		Craftsman's Legacy	For Your Home	
11am / 10 MT	Various	Fit 2 Stitch	Quilting Arts	Knit & Crochet Now!	Signing Time!
11:30/10:30MT	Various	Grand View	Paint This with Jerry Yarnell	Joy of Painting	
Noon/ 11 MT	Odd Squad	Pati's Mexican Table	Sara's Weeknight Meals	Taste the Islands w/ Chef Irie	Biz Kid\$
12:30/11:30MT	Odd Squad	Secrets of a Chef	Modern Irish Food/ Seafood Cook-off	Home Chef	Zula Patrol
1pm/ Noon MT	Arthur	Moveable Feast	John Besh's Family Table	Dining with the Chef	Space Racers
1:30/12:30 MT	Cyberchase	Ciao Italia	Scandinavian Cooking	Christina Cooks	DragonflyTV
2pm/ 1 MT	Word Girl	Curious Traveler	Grannies On Safari	Travels & Traditions	Arthur
2:30/1:30 MT	Sesame Street	Travels to the Edge	Travelscope	Painting the Town with Eric Dowdle	Wordgirl
3pm/2 MT	Peg + Cat	Rick Steves'	Rick Steves' Europe	Rick Steves' Europe	Wild Kratts
3:30/2:30MT	Barney & Friends	Amer. Woodshop	Rough Cut – Woodworking	Woodsmith Shop	Little Amadeus
4pm/ 3 MT	Mister Rogers	Garden Smart	P. Allen Smith's Garden Home	The Victory Garden's Edible Feast	Zoboomafoo
4:30/3:30MT	Berenstain Bears	Scrapbook Soup	Craftsman's Legacy	For Your Home	Martha Speaks
5pm / 4 MT	Clifford	Ask This Old House	This Old House	Woodwright's Shop	Nature Adven. 
5:30/4:30 MT	Hands on Crafts	Moveable Feast	The Free Range/Moveable Feast	The Free Range/ Moveable Feast (1/19)	January 2 "Eat the Right Thing"
6pm / 5 MT	BBQ with Franklin		Simply Ming	JoAnne Weir Gets Fresh	
6:30/5:30 MT	Essential Pepin		French Chef/Jacques Pepin (1/18)	Baking with Julia	January 9 "Sprouting Up Flavor"
7pm / 6 MT	Cooking School	Lidia's Kitchen	Lidia's Kitchen	Martha Stewart's Cooking School	January 16 "Craft Your Kitchen"
7:30/6:30 MT	Amer. Test Kitchen	Cook's Country	Cook's Country	America's Test Kitchen	
8pm / 7 MT	Chef's Life	Project Smoke	Project Smoke	Chef's Life	January 23 "Cold Weather Comfort"
8:30/7:30 MT	The Free Range/ Moveable Feast		The Free Range/Moveable Feast (1/18)	The Free Range/ Moveable Feast	
9pm / 8 MT	Ask This Old House		This Old House	Woodwright's Shop	January 30 "Winter Out, Cruise In"
9:30/8:30 MT	Rick Steves' Europe		Globe Trekker	Travelscope	
10pm / 9 MT	Music Voyager			In the Americas	Test Kitchen
10:30/9:30 MT	Cooking School	Lidia's Kitchen	Lidia's Kitchen	Martha Stewart's Cooking School	
11pm / 10 MT	Amer. Test Kitchen	Cook's Country	Cook's Country	America's Test Kitchen	Simply Ming
11:30/10:30MT	BBQ with Franklin		Simply Ming	JoAnne Weir Gets Fresh	Taste the Islands
Mid./ 11 MT	Pati's Mexican Table		Sara's Weeknight Meals	Taste the Islands w/ Chef Irie	Peregrine Dame
12:30/11:30MT	Dream of Italy		Equitrekking	Peregrine Dame	Lidia's Kitchen
1am/Mid. MT	Cooking School	Lidia's Kitchen	Lidia's Kitchen	Martha Stewart's Cooking School	Test Kitchen
1:30/12:30 MT	Amer. Test Kitchen	Cook's Country	Cook's Country	America's Test Kitchen	Project Smoke
2am/ 1 MT	Chef's Life	Project Smoke	Project Smoke	Chef's Life	The Free Range
2:30/1:30 MT	The Free Range/ Moveable Feast		Free Range/Moveable Feast (1/18)	The Free Range/Moveable Feast (1/19)	This Old House
3am/2 MT	Ask This Old House		This Old House	Woodwright's Shop	Globe Trekker
3:30/2:30MT	Rick Steves' Europe		Globe Trekker	Travelscope	Globe Trekker
4am/3 MT	Music Voyager			In the Americas	
4:30/3:30 MT	Cooking School	Lidia's Kitchen	Lidia's Kitchen	Martha Stewart's Cooking School	Lidia's Kitchen

- SDPB Television programs are Closed Captioned for the Hearing Impaired.
- Schedule is subject to change. Visit SDPB.org/tvschedules for program details and schedule changes.
-  Indicates locally produced programming.
- SDPB2 and SDPB3 are available free over-the-air via antenna and on most cable systems. Call your local provider to find out where you can find them on your cable system.

FRIDAY – JANUARY 1

SDPB1

- 6:30 (5:30 MT) **Great Performances From Vienna: The New Year's Celebration**
- 8:00 (7:00 MT) **Masterpiece: Sherlock The Abominable Bride**
- 9:32 (8:32 MT) **Salute to Downton Abbey**
- 10:00 (9:00 MT) **Night of the Proms**
- 10:30 (9:30 MT) **BBC World News**
- 11:00 (10:00 MT) **Charlie Rose**
- Midnight (11:00 MT) **Tavis Smiley**

SDPB2

- 6:00 (5:00 MT) **In Defense of Food**
- 8:00 (7:00 MT) **Craft in America**
- 9:00 (8:00 MT) **PBS NewsHour**
- 10:00 (9:00 MT) **Nightly Business Report**
- 10:30 (9:30 MT) **DW News**
- 11:00 (10:00 MT) **In Defense of Food**

SATURDAY – JANUARY 2

SDPB1

- 6:00 (5:00 MT) **Lawrence Welk Show**
- 7:00 (6:00 MT) **Doc Martin**
- 8:00 (7:00 MT) **Keeping up Appearances**
- 8:30 (7:30 MT) **As Time Goes By**
- 9:00 (8:00 MT) **Father Brown**
- 9:54 (8:54 MT) **Stargazers**
- 10:00 (9:00 MT) **Fiddles and Friends** ▼
- 11:00 (10:00 MT) **Austin City Limits Alabama Shakes/Vintage Trouble**
- Midnight (11:00 MT) **Front and Center Sara Evans and Martina McBride**

SDPB2

- Noon (11:00 MT) **Masterpiece: Downton Abbey** Season 5, Episode 2 of 9
- 1:00 (Noon MT) **Masterpiece: Downton Abbey** Season 5, Episode 3 of 9
- 2:00 (1:00 MT) **Masterpiece: Downton Abbey** Season 5, Episode 4 of 9
- 3:00 (2:00 MT) **Masterpiece: Downton Abbey** Season 5, Episode 5 of 9



Photo: Michael Forsberg

Julie Andrews hosts **Great Performances From Vienna: New Year's Celebration 2016** from the opulent Musikverein concert hall. Guest conductor Zubin Mehta leads the Vienna Philharmonic Orchestra. The performance includes favorite Strauss Family waltzes accompanied by the beautiful dancing of the Vienna City Ballet. The broadcast also features many picturesque Vienna landmarks.

SDPB1: Friday, Jan. 1, 6:30pm (5:30 MT)



Martin Freeman and Benedict Cumberbatch return as Dr. Watson and Sherlock Holmes in the acclaimed modern retelling of Arthur Conan Doyle's classic stories. This time our heroes find themselves in 1890s London in the 90-minute special **Sherlock: The Abominable Bride**. Beloved characters Mary Morstan (Amanda Abbington), Inspector Lestrade (Rupert Graves) and Mrs. Hudson (Una Stubbs) also turn up at 221B Baker Street.

SDPB1: Friday, Jan. 1, 8pm (7 MT) & Sunday, Jan. 10, 9pm (8 MT)

Photo: Robert Vigglesby/Hartswood Films and BBC Wales for BBC One and MASTERPIECE

4:00 (3:00 MT) **Masterpiece: Downton Abbey** Season 5, Episode 6 of 9

- 5:00 (4:00 MT) **PBS NewsHour Weekend**
- 5:30 (4:30 MT) **Scully/The World Show**
- 6:00 (5:00 MT) **Focus On Europe**
- 6:30 (5:30 MT) **Global 3000**
- 7:00 (6:00 MT) **Everest: A Climb for Peace**
- 8:00 (7:00 MT) **Practicing Peace with Burt Wolf**
- 9:00 (8:00 MT) **America ReFramed A Will for the Woods**
- 10:03 (9:03 MT) **American Masters: A Fierce Green Fire**
- 11:00 (10:00 MT) **Everest: A Climb for Peace**
- Midnight (11:00 MT) **Practicing Peace with Burt Wolf**

SUNDAY – JANUARY 3

SDPB1

- 3:00 (2:00 MT) **Everyone Has a Place**
- 3:30 (2:30 MT) **Twirl Girls**
- 4:00 (3:00 MT) **Rick Steves' Europe**
- 4:30 (3:30 MT) **Nature Adventures** ▼ *The Living Coast*
- 5:00 (4:00 MT) **Antiques Roadshow Treasures on the Move**
- 6:00 (5:00 MT) **Great Fire** Episode 4 of 4
- 7:00 (6:00 MT) **Countdown to Downton Abbey**
- 8:00 (7:00 MT) **Masterpiece: Downton Abbey** Season 6, Episode 1 of 9
- 9:15 (8:15 MT) **Celebration of Downton Abbey**
- 10:00 (9:00 MT) **Manor of Speaking**
- 10:30 (9:30 MT) **Detectorists**
- 11:00 (10:00 MT) **Globe Trekker**
- Midnight (11:00 MT) **Dakota Life** ▼

SDPB2

- 12:30 (11:30 MT) **Masterpiece: Downton Abbey** Season 5, Episode 7 of 9
- 1:30 (12:30 MT) **Masterpiece: Downton Abbey** Season 5, Episode 8 of 9
- 3:00 (2:00 MT) **Masterpiece: Downton Abbey** Season 5, Episode 9 of 9
- 5:00 (4:00 MT) **PBS NewsHour Weekend**
- 5:30 (4:30 MT) **Dakota Life** ▼ *Young People Exploring Their Dreams*
- 6:00 (5:00 MT) **Our Statehouse – A Capitol Idea** ▼
- 7:00 (6:00 MT) **Prohibition**

MONDAY – JANUARY 4

SDPB1

- 6:00 (5:00 MT) **PBS NewsHour**
- 7:00 (6:00 MT) **Antiques Roadshow Spokane, Hour 1/Pittsburgh, Hour 2**
- 9:00 (8:00 MT) **Independent Lens Chuck Norris vs. Communism**
- 10:00 (9:00 MT) **Red Green Show**
- 10:24 (9:24 MT) **Stargazers**
- 10:30 (9:30 MT) **BBC World News**
- 11:00 (10:00 MT) **Charlie Rose**
- Midnight (11:00 MT) **Tavis Smiley**

SDPB2

- 6:00 (5:00 MT) **Banjo Romantika: American Bluegrass**
- 7:00 (6:00 MT) **Dear Albania**
- 8:00 (7:00 MT) **Local USA Breadfruit & Open Space**
- 8:30 (7:30 MT) **On Story A Conversation with Chris Carter, Creator of The X-Files**
- 9:00 (8:00 MT) **PBS NewsHour**
- 10:00 (9:00 MT) **Nightly Business Report**
- 10:30 (9:30 MT) **DW News**
- 11:00 (10:00 MT) **Banjo Romantika: American Bluegrass**
- Midnight (11:00 MT) **Dear Albania**

TUESDAY – JANUARY 5

SDPB1

- 6:00 (5:00 MT) **PBS NewsHour**
- 7:00 (6:00 MT) **Finding Your Roots**
- 8:00 (7:00 MT) **Frontline Netanyahu at War**
- 10:00 (9:00 MT) **Keeping Up Appearances**
- 10:30 (9:30 MT) **BBC World News**
- 11:00 (10:00 MT) **Charlie Rose**
- Midnight (11:00 MT) **Tavis Smiley**

SDPB2

- 6:00 (5:00 MT) **Life on the Line**
- 7:00 (6:00 MT) **America ReFramed Drivers Wanted**
- 8:00 (7:00 MT) **POV Ping Pong**
- 9:00 (8:00 MT) **PBS NewsHour**
- 10:00 (9:00 MT) **Nightly Business Report**
- 10:30 (9:30 MT) **DW News**
- 11:00 (10:00 MT) **America ReFramed Drivers Wanted**
- Midnight (11:00 MT) **POV Ping Pong**

WEDNESDAY – JANUARY 6

SDPB1

6:00 (5:00 MT) **PBS NewsHour**
 7:00 (6:00 MT) **Nature Animal Odd Couples**
 8:00 (7:00 MT) **NOVA Secret Tunnel Warfare**
 9:00 (8:00 MT) **Particle Fever**
 11:00 (10:00 MT) **Charlie Rose**
 Midnight (11:00 MT) **Tavis Smiley**

SDPB2

6:00 (5:00 MT) **Frontline Netanyahu at War**
 8:00 (7:00 MT) **Independent Lens Chuck Norris vs. Communism**
 9:00 (8:00 MT) **PBS NewsHour**
 10:00 (9:00 MT) **Nightly Business Report**
 10:30 (9:30 MT) **DW News**
 11:00 (10:00 MT) **Frontline Netanyahu at War**

THURSDAY – JANUARY 7

SDPB1

6:00 (5:00 MT) **PBS NewsHour**
 7:00 (6:00 MT) **On Call** *Dialogue with Sen. Tom Daschle on US Healthcare Policy*
 8:00 (7:00 MT) **Dakota Life** *Museums, Relics and Heritage*
 9:00 (8:00 MT) **Doc Martin**
 9:54 (8:54 MT) **Stargazers**
 10:00 (9:00 MT) **Detectorists**
 10:30 (9:30 MT) **BBC World News**
 11:00 (10:00 MT) **Charlie Rose**
 Midnight (11:00 MT) **Tavis Smiley**

SDPB2

6:00 (5:00 MT) **NOVA Secret Tunnel Welfare**
 7:00 (6:00 MT) **Particle Fever**
 9:00 (8:00 MT) **PBS NewsHour**
 10:00 (9:00 MT) **Nightly Business Report**
 10:30 (9:30 MT) **DW News**
 11:00 (10:00 MT) **NOVA Secret Tunnel Welfare**
 Midnight (11:00 MT) **Particle Fever**

FRIDAY – JANUARY 8

SDPB1

6:00 (5:00 MT) **PBS NewsHour**
 7:00 (6:00 MT) **Washington Week with Gwen Ifill**
 7:30 (6:30 MT) **Charlie Rose – The Week**
 8:00 (7:00 MT) **McLaughlin Group**
 8:30 (7:30 MT) **Market to Market**
 9:00 (8:00 MT) **In Performance at the White House A Celebration of American Creativity**
 10:00 (9:00 MT) **Night of the Proms**
 10:30 (9:30 MT) **BBC World News**
 11:00 (10:00 MT) **Charlie Rose**



Photo: National Geographic

Kasi the cheetah and Mtani the retriever met at Busch Gardens theme park in Tampa, Florida when both animals were only a few months old. The unlikely couple spent their earliest days together, discovering how to communicate and play with one another and have been lifelong companions since. Watch more unusual animal pairings on **Nature Animal Odd Couples**.

SDPB1: Wednesday, Jan. 6, 7pm (6 MT)
 SDPB2: Sunday, Jan. 10, 7 & 10pm (6 & 9 MT)
 Monday, Jan. 11, Noon (11 MT)

Midnight (11:00 MT) **Tavis Smiley**

SDPB2

6:00 (5:00 MT) **To Catch a Dollar: Muhammad Yunus**
 7:00 (6:00 MT) **Power to the People with Johan Norberg**
 8:00 (7:00 MT) **India Awakes**
 9:00 (8:00 MT) **PBS NewsHour**
 10:00 (9:00 MT) **Nightly Business Report**
 10:30 (9:30 MT) **DW News**
 11:00 (10:00 MT) **To Catch a Dollar: Muhammad Yunus**
 Midnight (11:00 MT) **Power to the People with Johan Norberg**

SATURDAY – JANUARY 9

SDPB1

6:00 (5:00 MT) **Lawrence Welk Show**
 7:00 (6:00 MT) **Doc Martin**
 8:00 (7:00 MT) **Keeping Up Appearances**
 8:30 (7:30 MT) **As Time Goes By**
 9:00 (8:00 MT) **Father Brown**
 9:54 (8:54 MT) **Stargazers**
 10:00 (9:00 MT) **No Cover, No Minimum** *Jami Lynn*
 11:00 (10:00 MT) **Austin City Limits Kendrick Lamar**
 Midnight (11:00 MT) **Front and Center Little Big Town**

SDPB2

1:00 (Noon MT) **To Catch a Dollar: Muhammad Yunus**
 2:00 (1:00 MT) **Power to the People with Johan Norberg**
 3:00 (2:00 MT) **India Awakes**
 4:00 (3:00 MT) **To the Contrary with Bonnie Erbe**
 4:30 (3:30 MT) **Washington Week with Gwen Ifill**

5:00 (4:00 MT) **PBS NewsHour Weekend**
 5:30 (4:30 MT) **Charlie Rose – The Week**
 6:00 (5:00 MT) **Focus on Europe**
 6:30 (5:30 MT) **Global 3000**
 7:00 (6:00 MT) **POV The Overnights**
 9:00 (8:00 MT) **America ReFramed Drivers Wanted**
 10:00 (9:00 MT) **Independent Lens Powerless**
 11:00 (10:00 MT) **POV The Overnights**

SUNDAY – JANUARY 10

SDPB1

2:00 (1:00 MT) **We Served Too: The Story of the Women's Airforce Service Pilots**
 3:00 (2:00 MT) **Finding Traction**
 4:00 (3:00 MT) **Rick Steves' Europe**
 4:30 (3:30 MT) **Nature Adventures** *Exploring Mobile, Alabama*
 5:00 (4:00 MT) **Antiques Roadshow Spokane, Hour 1**
 6:00 (5:00 MT) **Into the Wild: Edison, Ford & Friends**
 6:30 (5:30 MT) **Masterpiece: Downton Abbey Season 6, Episode 1 of 9**
 8:00 (7:00 MT) **Masterpiece: Downton Abbey Season 6, Episode 2 of 9**
 9:00 (8:00 MT) **Masterpiece: Sherlock The Abominable Bride**
 10:32 (9:32 MT) **Manor of Speaking**
 11:00 (10:00 MT) **Globe Trekker**
 Midnight (11:00 MT) **Washington Week with Gwen Ifill**

SDPB2

2:30 (1:30 MT) **Open Mind The Human Genome App**
 3:00 (2:00 MT) **Focus on Europe**
 3:30 (2:30 MT) **Global 3000**
 4:00 (3:00 MT) **America ReFramed Drivers Wanted**
 5:00 (4:00 MT) **PBS NewsHour Weekend**



Photo: Official White House Photo by Chuck Kennedy

MC Lyte performs as President Barack Obama and First Lady Michelle Obama host an all-star music tribute celebrating the cultural resonance of art and literature in unique American musical forms in **In Performance at the White House: A Celebration of American Creativity**.

The program features performances by Buddy Guy, Queen Latifah, Audra McDonald, Keb' Mo', Smokey Robinson, Trombone Shorty, Esperanza Spalding, Brian Stokes Mitchell, James Taylor, Usher, and Carol Burnett. The event commemorates the 50th anniversary of the National Foundation on the Arts and the Humanities Act, signed into law by President Lyndon Johnson in 1965. The act called for the creation of the National Endowment for the Humanities (NEH) and the National Endowment for the Arts (NEA) as separate, independent agencies, the culmination of a movement calling for the federal government to invest in culture.

SDPB1: Friday, Jan. 8, 9pm (8 MT)



Photo: BBC/Chaadden Hunter

Scientists believe that because Mmamoriri, the maned lioness, mimics a male, rivals believe there are more males in the pride than there actually are. Get to know the cheats, sneaks and masters of disguise in the animal world. Double-crossing cuttlefish, rattlesnake-mimicking owls, and gangster monkeys are but a few of the remarkable animals going to elaborate lengths to claw their way to the top in the three-part-series **Nature Natural Born Hustlers**.

SDPB1: Wednesdays, Jan. 13, 20 & 27, 7pm (6 MT)

SDPB2: Sundays, Jan. 17, 24, & 31, 8pm (9 MT)

(January 10, continued)

5:30 (4:30 MT) **Dakota Life** ▼

6:00 (5:00 MT) **Revolutionaries Driving Innovation: Detroit Comes to Silicone Valley**

7:00 (6:00 MT) **Nature Animal Odd Couples**

8:00 (7:00 MT) **Wild Horses of the West**

9:00 (8:00 MT) **Global Voices**

11:28 (10:28 MT) **Nature Animal Odd Couples**

MONDAY – JANUARY 11

SDPB1

6:00 (5:00 MT) **PBS NewsHour**

7:00 (6:00 MT) **Antiques Roadshow Spokane, Hour 2/Pittsburgh, Hour 3**

9:00 (8:00 MT) **Independent Lens Autism in Love**

10:30 (9:30 MT) **BBC World News**

11:00 (10:00 MT) **Charlie Rose**

Midnight (11:00 MT) **Tavis Smiley**

SDPB2

6:00 (5:00 MT) **Finding Your Roots**

7:00 (6:00 MT) **Eyes on the Prize: Then and Now**

7:30 (6:30 MT) **Education of Harvey Gantt**

8:00 (7:00 MT) **Local USA Immigration: Language**

8:30 (7:30 MT) **On Story Raising Stakes, Reversals, and Payoffs**

9:00 (8:00 MT) **PBS NewsHour**

10:00 (9:00 MT) **Nightly Business Report**

10:30 (9:30 MT) **DW News**

11:00 (10:00 MT) **Finding Your Roots**

Midnight (11:00 MT) **Eyes on the Prize: Then and Now**

TUESDAY – JANUARY 12

SDPB1

6:00 (5:00 MT) **PBS NewsHour**

7:00 (6:00 MT) **Finding Your Roots**

8:00 (7:00 MT) **State of the Union Address**

10:00 (9:00 MT) **State of the State Address**

Midnight (11:00 MT) **Tavis Smiley**

SDPB2

6:00 (5:00 MT) **Life on the Line**

7:00 (6:00 MT) **America ReFramed Dignity Harbor**

8:00 (7:00 MT) **State of the Union Address**

10:00 (9:00 MT) **Nightly Business Report**

10:30 (9:30 MT) **DW News**

11:00 (10:00 MT) **America ReFramed Dignity Harbor**

Midnight (11:00 MT) **@Home**

WEDNESDAY – JANUARY 13

SDPB1

6:00 (5:00 MT) **PBS NewsHour**

7:00 (6:00 MT) **Nature Natural Born Hustlers: Staying Alive**

8:00 (7:00 MT) **NOVA Life's Rocky Start**

9:00 (8:00 MT) **Earth's Natural Wonders**

10:00 (9:00 MT) **Vicious**

10:30 (9:30 MT) **BBC World News**

11:00 (10:00 MT) **Charlie Rose**

Midnight (11:00 MT) **Tavis Smiley**

SDPB2

6:00 (5:00 MT) **Eyes on the Prize: Then and Now**

6:30 (5:30 MT) **Independent Lens Autism in Love**

8:00 (7:00 MT) **Frontline The Retirement Gamble**

9:00 (8:00 MT) **PBS NewsHour**

10:00 (9:00 MT) **Nightly Business Report**

10:30 (9:30 MT) **DW News**

11:00 (10:00 MT) **Eyes on the Prize: Then and Now**

11:30 (10:30 MT) **Independent Lens Autism in Love**

THURSDAY – JANUARY 14

SDPB1

6:00 (5:00 MT) **PBS NewsHour**

7:00 (6:00 MT) **On Call** ▼ *The Heart and The Rhythm of Life*

9:00 (8:00 MT) **Doc Martin**

9:54 (8:54 MT) **Stargazers**

10:00 (9:00 MT) **Detectorists**
10:30 (9:30 MT) **BBC World News**
11:00 (10:00 MT) **Charlie Rose**
Midnight (11:00 MT) **Tavis Smiley**

SDPB2

6:00 (5:00 MT) **NOVA Life's Rocky Start**

7:00 (6:00 MT) **Humanity from Space**

9:00 (8:00 MT) **PBS NewsHour**

10:00 (9:00 MT) **Nightly Business Report**

10:30 (9:30 MT) **DW News**

11:00 (10:00 MT) **NOVA Life's Rocky Start**

Midnight (11:00 MT) **Humanity from Space**

FRIDAY – JANUARY 15

SDPB1

6:00 (5:00 MT) **PBS NewsHour**

7:00 (6:00 MT) **Washington Week with Gwen Ifill**

7:30 (6:30 MT) **Charlie Rose – The Week**

8:00 (7:00 MT) **McLaughlin Group**

8:30 (7:30 MT) **Market to Market**

9:00 (8:00 MT) **Statehouse** ▼

10:00 (9:00 MT) **Willie Nelson: The Library of Congress Gershwin Prize**

10:30 (9:30 MT) **BBC World News**

11:00 (10:00 MT) **Charlie Rose**

Midnight (11:00 MT) **Tavis Smiley**

SDPB2

6:00 (5:00 MT) **American Experience: Death and the Civil War**

8:00 (7:00 MT) **Shift Change**

9:00 (8:00 MT) **PBS NewsHour**

10:00 (9:00 MT) **Nightly Business Report**

10:30 (9:30 MT) **DW News**

11:00 (10:00 MT) **American Experience: Death and the Civil War**

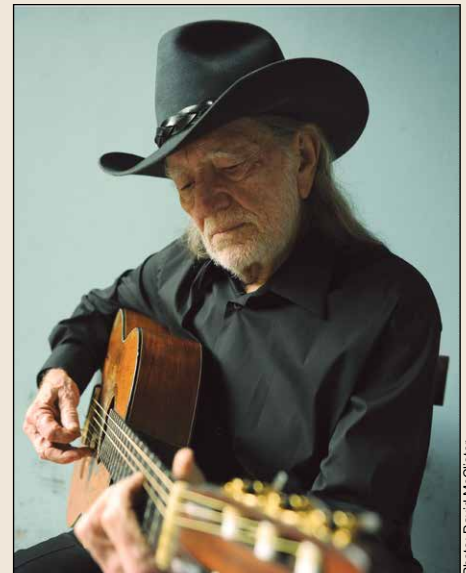
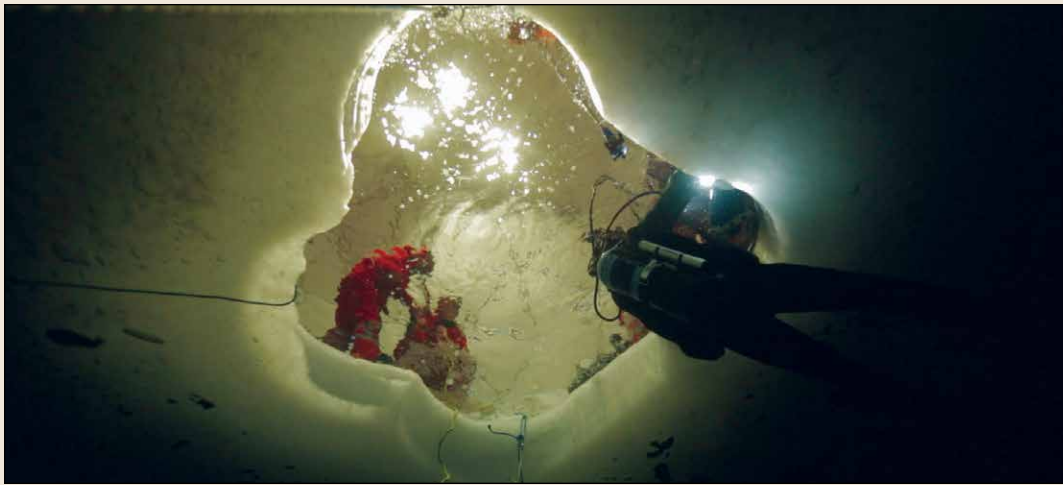


Photo: David McClister

Willie Nelson, the songwriter whose lyrics give voice to America's heartland and whose music pushes genre boundaries, is the recipient of the 2015 Library of Congress Gershwin Prize. Join Rosanne Cash, Edie Brickell, Paul Simon, Alison Krauss, Raul Malo, Neil Young and more as they pay tribute in **Willie Nelson: The Library of Congress Gershwin Prize for Popular Song**.

SDPB1: Friday, Jan. 15, 10pm (9 MT)



Dive under the ice in **NOVA** *Mystery Beneath the Ice* to explore Antarctica's under-ice landscape with a team of scientists as they search for the mystery killer that's decimating the population of delicate shrimp-like creatures at the foundation of the Antarctic food chain.

SDPB1: Wednesday, Jan. 20, 8pm (7 MT)
SDPB2: Thursday, Jan. 21, 6 & 11pm (5 & 10 MT)

SATURDAY – JANUARY 16

SDPB1

6:00 (5:00 MT) **Lawrence Welk Show**
7:00 (6:00 MT) **Doc Martin**
8:00 (7:00 MT) **Keeping Up Appearances**
8:30 (7:30 MT) **As Time Goes By**
9:00 (8:00 MT) **Father Brown**
9:54 (8:54 MT) **Stargazers**
10:00 (9:00 MT) **No Cover, No Minimum** ▼
Hank Harris
11:00 (10:00 MT) **Austin City Limits** *Ryan Adams/Shakey Graves*
Midnight (11:00 MT) **Front and Center** *Zakk Wyld*

SDPB2

1:00 (Noon MT) **American Experience: Death and the Civil War**
3:00 (2:00 MT) **Shift Change**
4:00 (3:00 MT) **To the Contrary with Bonnie Erbe**
4:30 (3:30 MT) **Washington Week with Gwen Ifill**
5:00 (4:00 MT) **PBS NewsHour Weekend**
5:30 (4:30 MT) **Charlie Rose – The Week**
6:00 (5:00 MT) **Focus on Europe**
6:30 (5:30 MT) **Global 3000**
7:00 (6:00 MT) **Independent Lens** *Rich Hill*
8:30 (7:30 MT) **Eyes on the Prize: Then and Now**
9:00 (8:00 MT) **America ReFramed** *If You Build It*
10:30 (9:30 MT) **Outside the Box**
11:00 (10:00 MT) **Independent Lens** *Rich Hill*
12:30 (11:30 MT) **Eyes on the Prize: Then and Now**

SUNDAY – JANUARY 17

SDPB1

3:00 (2:00 MT) **Mr. Civil Rights: Thurgood Marshall and the NAACP**
4:00 (3:00 MT) **Rick Steves' Europe**
4:30 (3:30 MT) **Nature Adventures** ▼ *Best of Florida*
5:00 (4:00 MT) **Antiques Roadshow** *Spokane, Hour 2*
6:00 (5:00 MT) **Midsomer Murders**
7:00 (6:00 MT) **Masterpiece: Downton Abbey** Season 6, Episode 2 of 9
8:00 (7:00 MT) **Masterpiece: Downton Abbey** Season 6, Episode 3 of 9
9:00 (8:00 MT) **Mercy Street**
10:00 (9:00 MT) **Manor of Speaking**
10:30 (9:30 MT) **Detectorists**

11:00 (10:00 MT) **Globe Trekker**
Midnight (11:00 MT) **Washington Week with Gwen Ifill**

SDPB2

1:00 (Noon MT) **To the Contrary with Bonnie Erbe**
1:30 (12:30 MT) **Washington Week with Gwen Ifill**
2:00 (1:00 MT) **McLaughlin Group**
2:30 (1:30 MT) **Open Mind**
3:00 (2:00 MT) **Focus on Europe**
3:30 (2:30 MT) **Global 3000**
4:00 (3:00 MT) **Light of the Prairie: Stained Glass in South Dakota** ▼
5:00 (4:00 MT) **PBS NewsHour Weekend**
5:30 (4:30 MT) **Outside the Box**
6:00 (5:00 MT) **Education of Harvey Gantt**
6:30 (5:30 MT) **Eyes on the Prize: Then and Now**
7:00 (6:00 MT) **Eyes on the Prize: World Channel Special**
8:00 (7:00 MT) **Nature** *Natural Born Hustlers: Staying Alive*
9:00 (8:00 MT) **Global Voices**
10:30 (9:30 MT) **Eyes on the Prize Then and Now**
11:00 (10:00 MT) **Eyes on the Prize: World Channel Special**
Midnight (11:00 MT) **Nature** *Natural Born Hustlers: Staying Alive*

MONDAY – JANUARY 18

SDPB1

6:00 (5:00 MT) **PBS NewsHour**
7:00 (6:00 MT) **Antiques Roadshow** *Spokane, Hour 3/ El Paso, Hour 1*
9:00 (8:00 MT) **Independent Lens** *Little White Lie*
10:00 (9:00 MT) **Red Green Show**
10:24 (9:24 MT) **Stargazers**
10:30 (9:30 MT) **BBC World News**
11:00 (10:00 MT) **Charlie Rose**
Midnight (11:00 MT) **Tavis Smiley**

SDPB2

6:00 (5:00 MT) **Finding Your Roots**
7:00 (6:00 MT) **Afropop: The Ultimate Cultural Exchange**
8:00 (7:00 MT) **Local USA** *Stories From the Classroom*
8:30 (7:30 MT) **On Story** *Explosive Action!*
9:00 (8:00 MT) **PBS NewsHour**
10:00 (9:00 MT) **Nightly Business Report**

10:30 (9:30 MT) **DW News**
11:00 (10:00 MT) **Finding Your Roots**
Midnight (11:00 MT) **Afropop: The Ultimate Cultural Exchange**

TUESDAY – JANUARY 19

SDPB1

6:00 (5:00 MT) **PBS NewsHour**
7:00 (6:00 MT) **Finding Your Roots**
8:00 (7:00 MT) **American Experience: Bonnie & Clyde**
9:00 (8:00 MT) **Frontline** *Supplements and Safety*
10:00 (9:00 MT) **Keeping Up Appearances**
10:30 (9:30 MT) **BBC World News**
11:00 (10:00 MT) **Charlie Rose**
Midnight (11:00 MT) **Tavis Smiley**

SDPB2

6:00 (5:00 MT) **Life on the Line**
7:00 (6:00 MT) **America ReFramed**
8:30 (7:30 MT) **One Night in March**
9:00 (8:00 MT) **PBS NewsHour**
10:00 (9:00 MT) **Nightly Business Report**
10:30 (9:30 MT) **DW News**
11:00 (10:00 MT) **America ReFramed**
12:30 (11:30 MT) **One Night in March**

WEDNESDAY – JANUARY 20

SDPB1

6:00 (5:00 MT) **PBS NewsHour**
7:00 (6:00 MT) **Nature** *Natural Born Hustler: The Hunger Hustle*
8:00 (7:00 MT) **NOVA** *Mystery Beneath the Ice*
9:00 (8:00 MT) **Earth's Natural Wonders**
10:00 (9:00 MT) **Vicious**
10:30 (9:30 MT) **BBC World News**
11:00 (10:00 MT) **Charlie Rose**
Midnight (11:00 MT) **Tavis Smiley**

SDPB2

6:00 (5:00 MT) **Independent Lens** *The Homestretch/Little White Lie*
8:00 (7:00 MT) **Frontline**
9:00 (8:00 MT) **PBS NewsHour**
10:00 (9:00 MT) **Nightly Business Report**
10:30 (9:30 MT) **DW News**
11:00 (10:00 MT) **Independent Lens** *The Homestretch/Little White Lie*

(continued on page 14)

Life, Death, and the American Civil War

Two productions on SDPB present the fascinating early years of health and funeral practices in America.



Aurelia Johnson (Shalita Grant) and Samuel Diggs (McKinley Belcher III) in **Mercy Street**.

Mercy Street

Based on real events, **Mercy Street**, PBS's new Civil War medical drama, takes viewers beyond the battlefield and into the lives of Americans on the Civil War home front as they face the unprecedented challenges of one of the most turbulent times in our nation's history.

Set in Virginia in 1862, **Mercy Street** follows the lives of two volunteer nurses on opposite sides of the conflict: Mary Phinney, (Mary Elizabeth Winstead), a staunch New England abolitionist, and Emma Green, (Hannah James), a naive young Confederate belle.

The nurses collide at Mansion House, the Green family's luxury hotel taken over and transformed into a Union Army Hospital in Alexandria, VA, a border town between North and South and the longest-occupied Confederate city of the war. Ruled under martial law, Alexandria is now the melting pot of the region, filled with soldiers, runaway slaves, female volunteer nurses, doctors, wounded fighting men prostitutes, speculators and spies.

This series is not about battles and glory, but the drama and unexpected humor of everyday life behind the front lines. It's a fresh twist on an iconic story, one that resonates with larger themes we still struggle with today. **Mercy Street** premieres on SDPB1, Sunday, January 17, 9pm (8 MT).

American Experience: Death and the Civil War

From its outbreak in 1861 until the Confederate surrender in 1865, the toll of disease, death and destruction wrought during the Civil War was enormous. Over 620,000 of 2.4 million soldiers were reported killed and an estimated 1.5 million others were injured in combat or ill from disease. For every three soldiers who died in battle, five more perished from sicknesses such as smallpox, measles, and tuberculosis spread and exacerbated due to horrific living conditions and nascent medical practices. The film examines the increasingly lethal years of the war, focusing primarily on several key battles and their corpse-strewn aftermaths, and concludes with a section on the postwar efforts toward reburial and remembrance. Tune in for **American Experience: Death and the Civil War** on SDPB2 Friday, Jan 15, 6pm (5 MT) & 11pm (10 MT) and Saturday, January 16, 1pm (Noon MT). Rebroadcasts on SDPB1 Tuesday, Jan. 26, 8pm (7 MT).



Mercy Street's Emma Green (Hannah James) and Jedediah Foster (Josh Radnor).



Unidentified girl in mourning dress holding framed photograph of her father as a cavalryman with sword and Hardee hat. (1861)

DISCOVER ALASKA...

ITS ALL INCLUDED.



2016 ALASKAN SUMMER OFFER

MAY THROUGH AUGUST 2016 VOYAGES

2-FOR-1 ALL-INCLUSIVE FARES FROM \$4,799

Enjoy NEW EXCLUSIVE OFFERS
\$300 Shipboard Credit • Kids Sail for \$999

Connect WITH FRIENDS & FAMILY BACK HOME
FREE Unlimited WiFi

Share YOUR EXPERIENCE WITH THE ENTIRE FAMILY
Club Mariner Youth Program • Terry Breen — Alaska Expert



803 St. Patrick St.
Rapid City, SD
605.342.2700 or 800.658.3348
www.burschtravel.com

Regent
SEVEN SEAS CRUISES®

THE MOST INCLUSIVE
LUXURY EXPERIENCE™

2-FOR-1 ALL-INCLUSIVE FARES

FREE
UNLIMITED WIFI **NEW**

FREE
ROUNDRIP AIR*

FREE
UNLIMITED SHORE EXCURSIONS

FREE
LUXURY HOTEL PACKAGE*

FREE
SPECIALTY RESTAURANTS

FREE
UNLIMITED BEVERAGES INCLUDING
FINE WINES AND PREMIUM SPIRITS

FREE
PRE-PAID GRATUITIES

FREE
TRANSFERS BETWEEN
AIRPORT AND SHIP

*Fares are subject to increase January 1, 2016. All fares are per person in U.S. dollars, valid for residents of U.S. & Canada, based on double occupancy, for new bookings only and may be withdrawn at any time. Not all promotions are combinable. 2-For-1 Fares and Early Booking Savings are based on published Full Brochure Fares; such fares may not have resulted in actual sales in all suite categories and do not include optional charges as detailed in the Guest Ticket Contract. Single Supplement savings are capacity-controlled and are available on select voyages and categories. "Alaskan Summer Offer" promotion of FREE Unlimited WiFi is throughout the ship and available for all suite categories and \$300 shipboard credit is per suite based on NEW bookings made through December 31, 2015 on select voyages. "Alaskan Summer Offer" is capacity controlled and may be withdrawn at any time without notice. You must mention promo code "ASO2016" at the time of booking to receive this offer. Kids sail fares are per person and include cruise-only fares and FREE Unlimited Shore Excursions. FREE Roundtrip Air includes ground transfers and applies to coach, roundtrip flights only from the following airports: ATL, BOS, CLT, DEN, DFW, DTW, EWR, FLL, IAD, IAH, JFK, LAX, LGA, MCO, MDW, MIA, MSP, ORD, PBI, PHL, PHX, SAN, SEA, SFO, TPA, YUL, YVR, YYZ. FREE Roundtrip Air is also available from YOW and YYC when a new booking is made by December 31, 2015. Airfare is available from all other U.S. & Canadian gateways for an additional charge. FREE Roundtrip Air includes all airline fees, surcharges and government taxes, however, airline-imposed personal charges such as baggage fees may apply. For details, visit exploreflightfees.com. FREE 1-Night Pre-Cruise Luxury Hotel Package applies to guests 1 and 2 in Concierge Suites and higher and is not available for new bookings made within 60 days of departure. For complete Terms & Conditions contact Bursch Travel. Ships' Registry: Bahamas. ©2015 Regent Seven Seas Cruises®

SA_DEC15958



Photo: Scott Newton

The “Queen of African Music,” Grammy Award winning singer-songwriter Angélique Kidjo brings one of the most energetic and danceable performances ever to the famed Texas stage in **Austin City Limits** Angélique Kidjo. Songs include “Ebile,” Kulumbu,” the jazzy, call-and-response “Batonga,” the Swahili “Malaika,” and a soulful cover of Bob Marley’s “Redemption Song.”

SDPB1: Saturday, Jan. 23, 11pm (10 MT)

THURSDAY – JANUARY 21

SDPB1

- 6:00 (5:00 MT) **PBS NewsHour**
- 7:00 (6:00 MT) **On Call** ▼ *How to Deal with Congestion*
- 8:00 (7:00 MT) **South Dakota Focus** ▼ *Elderly Abuse Taskforce*
- 9:00 (8:00 MT) **Doc Martin**
- 9:54 (8:54 MT) **Stargazers**
- 10:00 (9:00 MT) **Detectorists**
- 10:30 (9:30 MT) **BBC World News**
- 11:00 (10:00 MT) **Charlie Rose**
- Midnight (11:00 MT) **Tavis Smiley**

SDPB2

- 6:00 (5:00 MT) **NOVA** *Mystery Beneath the Ice*
- 7:00 (6:00 MT) **Uranium – Twisting the Dragon’s Tail**
- 9:00 (8:00 MT) **PBS NewsHour**
- 10:00 (9:00 MT) **Nightly Business Report**
- 10:30 (9:30 MT) **DW News**
- 11:00 (10:00 MT) **NOVA** *Mystery Beneath the Ice*

FRIDAY – JANUARY 22

SDPB1

- 6:00 (5:00 MT) **PBS NewsHour**
- 7:00 (6:00 MT) **Washington Week with Gwen Ifill**
- 7:30 (6:30 MT) **Charlie Rose – The Week**
- 8:00 (7:00 MT) **McLaughlin Group**
- 8:30 (7:30 MT) **Market to Market**
- 9:00 (8:00 MT) **Statehouse** ▼
- 10:00 (9:00 MT) **Great Performances at the Met II** *Trovatore*
- Midnight (11:00 MT) **Tavis Smiley**

SDPB2

- 6:00 (5:00 MT) **Independent Lens** *Detropia/ Medora*
- 9:00 (8:00 MT) **PBS NewsHour**
- 10:00 (9:00 MT) **Nightly Business Report**
- 10:30 (9:30 MT) **DW News**
- 11:00 (10:00 MT) **Independent Lens** *Detropia/ Medora*

SATURDAY – JANUARY 23

SDPB1

- 6:00 (5:00 MT) **Lawrence Welk Show**
- 7:00 (6:00 MT) **Doc Martin**
- 8:00 (7:00 MT) **Keeping up Appearances**
- 8:30 (7:30 MT) **As Time Goes By**
- 9:00 (8:00 MT) **Father Brown**
- 9:54 (8:54 MT) **Stargazers**
- 10:00 (9:00 MT) **No Cover, No Minimum** ▼ *Billy Lurken*
- 11:00 (10:00 MT) **Austin City Limits** *Angélique Kidjo*
- Midnight (11:00 MT) **Front and Center** *Train*

SDPB2

- 1:00 (Noon MT) **Independent Lens** *Detropia/ Medora*
- 4:00 (3:00 MT) **To the Contrary with Bonnie Erbe**
- 4:30 (3:30 MT) **Washington Week with Gwen Ifill**
- 5:00 (4:00 MT) **PBS NewsHour Weekend**
- 5:30 (4:30 MT) **Charlie Rose – The Week**
- 6:00 (5:00 MT) **Focus on Europe**
- 6:30 (5:30 MT) **Global 3000**
- 7:00 (6:00 MT) **POV** *Getting Back to Abnormal*
- 8:30 (7:30 MT) **Local USA** *Hunger in America*
- 9:00 (8:00 MT) **America ReFramed** *Downeast*
- 10:30 (9:30 MT) **Eyes on the Prize: Then and Now**
- 11:00 (10:00 MT) **POV** *Getting Back to Abnormal*
- 12:30 (11:30 MT) **Local USA** *Hunger in America*

SUNDAY – JANUARY 24

SDPB1

- 2:00 (1:00 MT) **Statehouse** ▼
- 3:00 (2:00 MT) **First Language** *The Race to Save Cherokee*
- 4:00 (3:00 MT) **Rick Steves’ Europe**
- 4:30 (3:30 MT) **Nature Adventures** ▼ *Black Hills Favorite Places*
- 5:00 (4:00 MT) **Antiques Roadshow** *Spokane, Hour Three*
- 6:00 (5:00 MT) **Midsomer Murders**
- 7:00 (6:00 MT) **Masterpiece: Downton Abbey** *Season 6, Episode 3 of 9*
- 8:00 (7:00 MT) **Masterpiece: Downton Abbey** *Season 6, Episode 4 of 9*
- 9:00 (8:00 MT) **Mercy Street**
- 10:00 (9:00 MT) **Manor of Speaking**
- 10:30 (9:30 MT) **Detectorists**
- 11:00 (10:00 MT) **Globe Trekker**
- Midnight (11:00 MT) **Washington Week with Gwen Ifill**

SDPB2

- 1:00 (Noon MT) **To the Contrary with Bonnie Erbe**
- 1:30 (12:30 MT) **Washington Week with Gwen Ifill**
- 2:00 (1:00 MT) **McLaughlin Group**
- 2:30 (1:30 MT) **Open Mind**
- 3:00 (2:00 MT) **Focus on Europe**
- 3:30 (2:30 MT) **Global 3000**
- 4:00 (3:00 MT) **Badlands: Nature’s Time Capsule** ▼
- 5:00 (4:00 MT) **PBS NewsHour Weekend**
- 5:30 (4:30 MT) **Eyes on the Prize Then and Now**
- 6:00 (5:00 MT) **Eyes on the Prize: World Channel Special**
- 8:00 (7:00 MT) **Nature** *Natural Born Hustlers: The Hunger Hustle*
- 9:00 (8:00 MT) **Global Voices**

- 10:00 (9:00 MT) **Independent Lens** *The Homestretch*
- 11:00 (10:00 MT) **Eyes on the Prize: World Channel Special**
- Midnight (11:00 MT) **Nature** *Natural Born Hustlers: The Hunger Hustle*

MONDAY – JANUARY 25

SDPB1

- 6:00 (5:00 MT) **PBS NewsHour**
- 7:00 (6:00 MT) **Antiques Roadshow** *Little Rock, Hour 1/ El Paso, Hour 2*
- 9:00 (8:00 MT) **Independent Lens** *No Más Bebés (No More Babies)*
- 10:00 (9:00 MT) **Red Green Show**
- 10:24 (9:24 MT) **Stargazers**
- 10:30 (9:30 MT) **BBC World News**
- 11:00 (10:00 MT) **Charlie Rose**
- Midnight (11:00 MT) **Tavis Smiley**

SDPB2

- 6:00 (5:00 MT) **Finding Your Roots**
- 7:00 (6:00 MT) **Afropop: The Ultimate Cultural Exchange**
- 8:00 (7:00 MT) **Local USA** *Through the Past*
- 8:30 (7:30 MT) **On Story** *The Humor and Heart of Animation*
- 9:00 (8:00 MT) **PBS NewsHour**
- 10:00 (9:00 MT) **Nightly Business Report**
- 10:30 (9:30 MT) **DW News**
- 11:00 (10:00 MT) **Finding Your Roots**
- Midnight (11:00 MT) **Afropop: The Ultimate Cultural Exchange**

TUESDAY – JANUARY 26

SDPB1

- 6:00 (5:00 MT) **PBS NewsHour**
- 7:00 (6:00 MT) **Finding Your Roots**
- 8:00 (7:00 MT) **American Experience: The Mining Wars**
- 10:00 (9:00 MT) **Keeping Up Appearances**
- 10:30 (9:30 MT) **BBC World News**
- 11:00 (10:00 MT) **Charlie Rose**
- Midnight (11:00 MT) **Tavis Smiley**

SDPB2

- 6:00 (5:00 MT) **Life on the Line**
- 7:00 (6:00 MT) **America ReFramed** *The Prep School Negro*



Photo: Marty SchiMetropolitan Opera

Yonghoon Lee as Manrico in **Great Performances** at the Met II *Trovatore*. Giuseppe Verdi’s *Il Trovatore*, or *The Troubadour*, debuted to wildly popular success in 1893 and is based on a play by Spanish dramatist Antonio García Gutiérrez. Taking place in 15th century Spain, the four-act opera features impassioned nobles, armies, gypsies and warriors and is beloved for its gorgeous arias and famous “Anvil Chorus.”

SDPB1: Friday, Jan. 22, 10pm (9 MT)

8:30 (7:30 MT) **Eyes on the Prize: Then and Now**
 9:00 (8:00 MT) **PBS NewsHour**
 10:00 (9:00 MT) **Nightly Business Report**
 10:30 (9:30 MT) **DW News**
 11:00 (10:00 MT) **America ReFramed *The Prep School Negro***
 Midnight (11:00 MT) **Eyes on the Prize: Then and Now**

WEDNESDAY – JANUARY 27

SDPB1
 6:00 (5:00 MT) **PBS NewsHour**
 7:00 (6:00 MT) **Nature *Natural Born Hustlers: Sex, Lies & Dirty Tricks***
 8:00 (7:00 MT) **NOVA *Himalayan Megaquake***
 9:00 (8:00 MT) **Earth's Natural Wonders**
 10:00 (9:00 MT) **Vicious**
 10:30 (9:30 MT) **BBC World News**
 11:00 (10:00 MT) **Charlie Rose**
 Midnight (11:00 MT) **Tavis Smiley**

SDPB2

6:00 (5:00 MT) **Independent Lens *American Denial/ No Más Bebés (No More Babies)***
 8:00 (7:00 MT) **Afropop: The Ultimate Cultural Exchange**
 9:00 (8:00 MT) **PBS NewsHour**
 10:00 (9:00 MT) **Nightly Business Report**
 10:30 (9:30 MT) **DW News**
 11:00 (10:00 MT) **Independent Lens *American Denial/ No Más Bebés (No More Babies)***

THURSDAY – JANUARY 28

SDPB1
 6:00 (5:00 MT) **PBS NewsHour**
 7:00 (6:00 MT) **On Call *Multiple Sclerosis***
 8:00 (7:00 MT) **South Dakota Focus *TBA***
 9:00 (8:00 MT) **Doc Martin**
 9:54 (8:54 MT) **Stargazers**
 10:00 (9:00 MT) **Detectorists**
 10:30 (9:30 MT) **BBC World News**
 11:00 (10:00 MT) **Charlie Rose**
 Midnight (11:00 MT) **Tavis Smiley**

SDPB2

6:00 (5:00 MT) **NOVA *Himalayan Megaquake***
 7:00 (6:00 MT) **Secrets of the Dead *Ultimate Tut***
 9:00 (8:00 MT) **PBS NewsHour**
 10:00 (9:00 MT) **Nightly Business Report**
 10:30 (9:30 MT) **DW News**
 11:00 (10:00 MT) **NOVA *Himalayan Megaquake***
 Midnight (11:00 MT) **Secrets of the Dead *Ultimate Tut***

FRIDAY – JANUARY 29

SDPB1
 6:00 (5:00 MT) **PBS NewsHour**
 7:00 (6:00 MT) **Washington Week with Gwen Ifill**
 7:30 (6:30 MT) **Charlie Rose – The Week**
 8:00 (7:00 MT) **McLaughlin Group**
 8:30 (7:30 MT) **Market to Market**
 9:00 (8:00 MT) **Statehouse *▼***
 10:00 (9:00 MT) **American Masters: *Mike Nichols***
 11:00 (10:00 MT) **Charlie Rose**
 Midnight (11:00 MT) **Tavis Smiley**

SDPB2

6:00 (5:00 MT) **American Experience: *The Mine Wars***



Photo: Dale Payne

Miners pose with guns in Eskdale, West Virginia in 1912. **American Experience *The Mine Wars*** goes inside the bitter battle to unionize coal miners at the dawn of the 20th century. The struggle over the power that fueled America led to the largest armed insurrection since the Civil War, and turned parts of West Virginia into a bloody war zone.

SDPB1: Tuesday, Jan. 26, 8pm (7 MT)

SDPB2: Friday, Jan. 29, 6pm & 11pm (5 & 10 MT); Saturday, Jan. 30, 7am & 1pm (6am & Noon MT)

8:00 (7:00 MT) **American Experience: *Bonnie & Clyde***

9:00 (8:00 MT) **PBS NewsHour**
 10:00 (9:00 MT) **Nightly Business Report**
 10:30 (9:30 MT) **DW News**

11:00 (10:00 MT) **American Experience: *The Mine Wars***

SATURDAY – JANUARY 30

SDPB1
 6:00 (5:00 MT) **Lawrence Welk Show**
 7:00 (6:00 MT) **Doc Martin**
 8:00 (7:00 MT) **Keeping Up Appearances**
 9:00 (8:00 MT) **Father Brown**
 9:54 (8:54 MT) **Stargazers**
 10:00 (9:00 MT) **No Cover, No Minimum *▼***
Ted and Alice Miller
 11:00 (10:00 MT) **Austin City Limits *Sleater-Kinney/Hearless***
 Midnight (11:00 MT) **Front and Center *The Rides***

SDPB2

1:00 (Noon MT) **American Experience: *The Mine Wars***
 3:00 (2:00 MT) **American Experience: *Bonnie & Clyde***
 4:00 (3:00 MT) **To the Contrary with Bonnie Erbe**
 4:30 (3:30 MT) **Washington Week with Gwen Ifill**
 5:00 (4:00 MT) **PBS NewsHour Weekend**
 5:30 (4:30 MT) **Charlie Rose – The Week**
 6:00 (5:00 MT) **Focus on Europe**
 6:30 (5:30 MT) **Global 3000**
 7:00 (6:00 MT) **American Masters: *Mike Nichols***
 8:00 (7:00 MT) **A Celebration: *Mary Tyler Moore***
 9:00 (8:00 MT) **America ReFramed *The Hill/ Stable Life***
 11:00 (10:00 MT) **American Masters: *Mike Nichols***
 Midnight (11:00 MT) **A Celebration: *Mary Tyler Moore***

SUNDAY – JANUARY 31

SDPB1
 2:00 (1:00 MT) **Statehouse *▼***
 3:00 (2:00 MT) **Banjo Romantika *American Bluegrass & The Czech Imagination***
 4:00 (3:00 MT) **Rick Steves' Europe**
 4:30 (3:30 MT) **Nature Adventures *▼ Pacific Coast of California***
 5:00 (4:00 MT) **Antiques Roadshow *Little Rock, Hour 1***
 6:00 (5:00 MT) **Midsomer Murders**
 7:00 (6:00 MT) **Masterpiece: *Downton Abbey* Season 6, Episode 4 of 9**
 8:00 (7:00 MT) **Masterpiece: *Downton Abbey* Season 6, Episode 5 of 9**
 9:00 (8:00 MT) **Mercy Street**
 10:00 (9:00 MT) **Manor of Speaking**
 10:30 (9:30 MT) **Detectorists**
 11:00 (10:00 MT) **Globe Trekker**
 Midnight (11:00 MT) **Washington Week with Gwen Ifill**

SDPB2

1:00 (Noon MT) **To the Contrary with Bonnie Erbe**
 1:30 (12:30 MT) **Washington Week with Gwen Ifill**
 2:00 (1:00 MT) **McLaughlin Group**
 2:30 (1:30 MT) **Open Mind**
 3:00 (2:00 MT) **Focus on Europe**
 3:30 (2:30 MT) **Global 3000**
 4:00 (3:00 MT) **Play Like a Girl**
 5:00 (4:00 MT) **PBS NewsHour Weekend**
 5:30 (4:30 MT) **Dakota Life *▼***
 6:00 (5:00 MT) **Eyes on the Prize: *World Channel Special***
 8:00 (7:00 MT) **Nature *Natural Born Hustlers: Sex, Lies & Dirty Tricks***
 9:00 (8:00 MT) **Global Voices**
 10:00 (9:00 MT) **Independent Lens *American Denial***
 11:00 (10:00 MT) **Eyes on the Prize: *World Channel Special***
 Midnight (11:00 MT) **Nature *Natural Born Hustlers: Sex, Lies & Dirty Tricks***



YOU REALLY **CAN** HAVE IT **ALL!**

Planning your future is as easy as making one call to Westhills Village. Set your goals on a lifestyle you can enjoy in a community designed around your needs. The Westhills Village waiting list is engineered to make sure we're ready for you when you're ready for us. And best of all, once your plans are set you can enjoy all the amenities at Westhills Village before you make the move. Take advantage of the indoor swimming pool, fitness center, library and of course a dining experience second to none. Think of Westhills Village as a little slice of heaven right here in your hometown. Look forward to a lifestyle of comfort with friends where professional staff handle the heavy lifting.

**THE FUTURE DEPENDS ON YOU...
AT WESTHILLS VILLAGE,
YOU REALLY CAN HAVE IT ALL.**



Meet Lori Walsh: New *Dakota Midday* Host

SDPB is pleased to welcome Lori Walsh as the new host of **Dakota Midday**. A graduate of Sioux Falls Lincoln High School and Augustana University, Lori also served in the United States Marine Corps. A blogger, a book critic, a children's book writer, a photographer, and a poet, Lori has most recently worked as a freelance journalist for the *Sioux Falls Argus Leader* and as a Humanities Scholar for the South Dakota Humanities Council, leading veterans writing groups.

SDPB: What did you do after you graduated from Sioux Falls-Lincoln?

Lori Walsh: When I was a junior in high school, I joined the Marine Corps. My senior year was spent in the Delayed Entry Program. I signed up to be a journalist. I wanted to be a war correspondent. But they switched me, because I had studied Spanish and based on my aptitude, they changed my job and I became a cryptologic Korean linguist. It just wasn't a difficult decision for me. It almost sounds like a cliché now, but I honestly wanted to serve my country. And I felt that was the way that I could do it, and get the benefits of seeing the world and going to college. There were personal benefits, but I really did it because I wanted to serve my country and do significant work that would last a lifetime. I feel like that was a successful decision.

What things learned during your military service have lasted a lifetime for you thus far?

LW: Creativity. It doesn't seem like that would come from the Marine Corps, but there are a lot of things thrown at you when you're in the Marines and in the field. A situation never goes like you planned. So, I learned that ability to adapt and overcome things. The ability to know that you can work hard beyond what you thought you were capable of. And that there is an intrinsic reward to that kind of sacrifice and that kind of hard work. And I learned about friendships. I learned how to be vulnerable with other people in close quarters. And you learn what you're capable of. And you learn



Lori Walsh joins SDPB as the new host of *Dakota Midday*.

that you can't do everything. And you learn that you can't do anything by yourself. It's all about the team. There's so much I learned from those six years. It's hard to overstate the significance of it.

After completing your service and travelling the world, you settled back in South Dakota. Why?

LW: When I was done with the Marine Corps, I came home. And I wanted to come home. I wanted to finish college. I had been able to get a couple of years of college under my belt between deployments, but I came home and enrolled at Augustana. I still wanted to be a journalist, after six years of not being a journalist, so I

enrolled in their journalism program. And I minored in modern foreign language. After that, I really did want to stay here. I think, like many other people, you see what the rest of the world is like and then you want to come home. South Dakota is the best place to raise children. The most difficult thing about raising a child in South Dakota is convincing them that it's a place worthy of staying. My daughter and her peer group are so bright, creative, intelligent. They know so much. They have so many great ideas for the future. The challenging thing is convincing them that they can launch those ideas right

(continued on page 19)

Mining the Origins of Life

On any given day, most of us unconsciously use or come into contact with minerals mined right here in South Dakota. Paddling to the bathroom in the morning, we may find bentonite clay from northwest of Belle Fourche in both our toothpaste and our porcelain. The cement we walk and drive on likely contains South Dakota shale, gypsum, quartzite or calcite. Sit down to your computer and chances are the circuits (and the ring finger on your keyboard) contain Black Hills Gold. The mica in your lip gloss may hail from Keystone, while granite mined from Milbank fortifies our buildings, kitchen counters and, ultimately, marks our graves.

According to Colin Paterson, Professor Emeritus of Geology and Geological Engineering at the School of Mines and Technology, mineral resources like iron oxide are the backbone of civilization, comprising important components of society and infrastructure.

Now scientists are advancing a startling theory that the rocks and minerals upon which we have come to depend also helped jump-start life on Earth. *NOVA: Life's Rocky Start* goes around the world and back in time to investigate how minerals are

vital to the origins and evolution of life. According to Paterson, "The theory involves geological processes which result in formation of the varieties of rocks and minerals, where the physics and chemistry of the process dictates what kinds of minerals will form." In the program, **NOVA** joins mineralogist Robert Hazen on the rocky trail to discover how the rocks beneath our feet were essential to establishing life. In turn, as microbes flourished and took over the biosphere, life helped give birth to hundreds of minerals we know and depend on today. "At all stages of this cycle," says Paterson, "there are opportunities for new minerals to form and for elements to be concentrated, in some places concentrated enough that the elements may be extracted economically from a mine – for example, gold at Homestake or lithium at the Etta mine near Keystone." This intriguing perspective of the co-evolution of Earth and life is reshaping the grand-narrative of our planet's story and lending appreciation for the intricate, epochal processes necessary to form our precious and finite resources.

SDPB1: Wednesday, Jan. 13, 8pm (7 MT)

SDPB2: Thursday, Jan. 14, 6 & 11pm (5 & 10 MT)



Variscite.

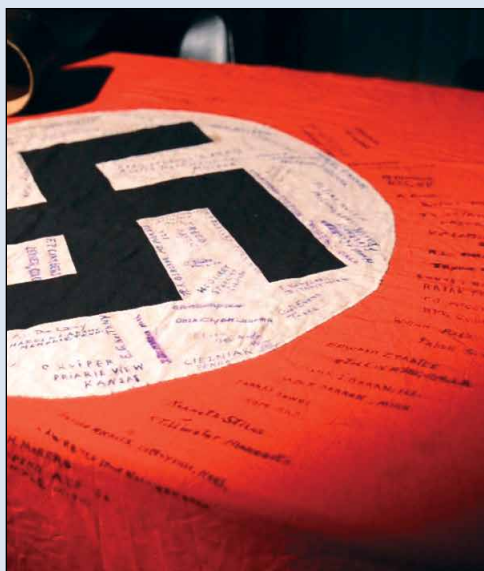


Geothite.



Calcite.

All Photos: Rob Tinworth



The flag Gigi Hickey is using to track down information about her mother's first husband.

Dakota Life: Museums, Relics and Heritage

This month **Dakota Life** takes a look at artifacts and people making history in South Dakota.

After discovering in her mother's attic a 12-foot Nazi banner signed by 84 American soldiers from Cannon Company, 358th, 90th Division, Gigi Hickey is tracking down the men and their families behind the names to find answers about her mother's first husband, Maurice Clifton "Pete" Henrichsen, who died in the Battle of the Bulge in January, 1945.

The program will visit the Pettigrew Home and Museum in Sioux Falls, an 1889 Queen Anne and home of South Dakota's first senator, R.F. Pettigrew, which is filled with items that tell the story of our state's history.

Photographer Stanley J. Morrow documented 1870s military expeditions against the Lakota as well as Native American portraits and village scenes. *Dakota Life* visits the W. H. Over Museum in Vermillion, home to some of Morrow's original photographs.

And we visit the Capitol Building in Pierre to learn the story behind the stunning holiday display of Christmas trees.

Tune in to **Dakota Life**, Thursday, Jan. 7, 8pm (7 MT) on SDPB1.

RADIO	WEEKDAYS	SATURDAYS	SUNDAYS	
5am / 4 MT	Morning Edition NPR news. Star Date 9am (8 MT)	BBC World Service Overnight.	BBC World Service Overnight.	
5:30/4:30 MT		The People's Pharmacy Health news & alternatives.	TED Radio Hour Ideas, inventions and original thinking.	
6am / 5 MT		Weekend Edition News and features from NPR.	Weekend Edition News and features from NPR.	
6:30/5:30 MT				
7am / 6 MT		Morning Classics with Owen DeJong ▼ "South Dakota Season Ticket" w/ local performance on Wed. "Request Day" on Fridays.	The Best of Car Talk Real advice, zany hosts.	Krista Tippett on Being Philosophical discussions.
7:30/6:30 MT			Wait, Wait ... Don't Tell Me Trivia, humor from week's news.	Travel with Rick Steves America's top travel expert.
8am / 7 MT			This American Life Portraits of all kinds of Americans.	America's Test Kitchen Recipes, tips, and information.
8:30/7:30 MT			Radiolab Science and life.	A Prairie Home Companion Garrison Keillor with music, humor, skits and more.
9am / 8 MT				
9:30/8:30 MT	Dakota Midday ▼ "Computer Guys" & "Innovation" on Fridays.	Ask Me Another Test your wits in this lively quiz show.	Wait, Wait ... Don't Tell Me Trivia, humor from week's news.	
10am / 9 MT	Here & Now Mondays-Thursdays News, features, conversations and more from NPR.			
10:30/9:30 MT	Science Friday on Fridays.			
11am / 10 MT	PRI's The World Global news.	The Dinner Party Download Pop culture, food & conversation.	On the Media News analysis and journalistic journeys.	
11:30/10:30MT		All Things Considered NPR	All Things Considered NPR	
Noon / 11 MT	A Prairie Home Companion Garrison Keillor with music, humor, skits and more.			Fresh Air Weekend Best features from the week.
12:30/11:30MT		National Native News 4:30 (3:30 MT)	Radiolab Science and life.	
1pm / Noon MT	Marketplace			American Routes Roots music, stories behind sounds/ artists. Rock Garden Tour ▼ Last Sat. of month, 8pm (7 MT)
1:30/12:30 MT		Fresh Air with Terry Gross Celeb, newsmaker interviews.	No Cover, No Minimum Radio ▼ South Dakota performance.	
2pm / 1 MT	Jazz Nightly with Karl Gehrke ▼ Karl features jazz artists & styles, as well as South Dakota Jazz Stars.			On Record with Matt Weesner ▼ Adult alternative music.
2:30/1:30 MT		World Café Music from around the globe.	No Cover, No Minimum Radio ▼ South Dakota performance.	
3pm / 2 MT	BBC World Service Overnight.			BBC World Service Overnight.
3:30/2:30 MT		BBC World Service Overnight.		
4pm / 3 MT	BBC World Service Overnight.			
4:30/3:30 MT		BBC World Service Overnight.		
5pm / 4 MT	BBC World Service Overnight.			
5:30/4:30 MT		BBC World Service Overnight.		
6pm / 5 MT	BBC World Service Overnight.			
6:30/5:30 MT		BBC World Service Overnight.		
7pm / 6 MT	BBC World Service Overnight.			
7:30/6:30 MT		BBC World Service Overnight.		
8pm / 7 MT	BBC World Service Overnight.			
8:30/7:30 MT		BBC World Service Overnight.		
9pm / 8 MT	BBC World Service Overnight.			
9:30/8:30 MT		BBC World Service Overnight.		
10pm / 9 MT	BBC World Service Overnight.			
10:30/9:30 MT		BBC World Service Overnight.		
11pm / 10 MT	BBC World Service Overnight.			
11:30/10:30MT		BBC World Service Overnight.		
Mid. / 11 MT	BBC World Service Overnight.			
12:30/11:30MT		BBC World Service Overnight.		
1am / Mid. MT	BBC World Service Overnight.			
		BBC World Service Overnight.		
	BBC World Service Overnight.			

(Lori Walsh, continued from page 17)

here in their home state.

You have a great early memory about public broadcasting. Can you tell us about that?

LW: My first memory of public broadcasting is when they had the membership drives on TV. When my mom would pledge for the year, she would always give our names and we kids would rush to the TV, and as soon as they said our names we would jump around and dance. We thought it was the greatest thing in the world. My mom was teaching us at that early age that it was important to support public broadcasting. That it was important to support local content. And that local content was

demonstrated when they would say our names and where we were from. We were part of the show then. It was a lesson. I don't know if it was intentional or not, but we learned the importance of public broadcasting early. We didn't have a lot of money, we didn't do a lot of donating, but I remember her donating to SDPB.

What about taking over Dakota Midday excites or challenges you?

LW: It's a huge responsibility to take the helm of something that is so well-established, successful, trusted. It's a great comfort to come into something and know I don't have to re-invent anything. On the other hand, I can look to the future

and say, "where is this going next." It's a great honor, responsibility, and privilege. It's a little terrifying, to be perfectly honest, because it's something that has been done so very, very well. But it's also exciting to say it can continue to get better, to grow. The conversation can continue. I'm thrilled to be a part of it. I'm a listener and now I'm a host.



Shaking the Family Tree

The groundbreaking genealogy series **Finding Your Roots** returns for its highly anticipated third season, premiering on SDPB1 Tuesday, Jan. 5, 7pm (6 MT).

This season the program traces the familial predecessors of 28 new guests including actors Julianne Moore (*Still Alice*), Maya Rudolph (*Saturday Night Live*, *Sisters*), Patricia Arquette (*Medium*, *CSI: Cyber*), Ty Burrell (*Modern Family*), Julianna Margulies (*The Good Wife*), Bill Hader (*Saturday Night Live*, *Documentary Now!*), Neil Patrick Harris (*How I Met Your Mother*, *Best Time Ever*); actors/directors Keenen Ivory Wayans and Dustin Hoffman; actress and activist Mia Farrow; chef and restaurateur Lidia Bastianich; businessman Richard Branson; Democratic National Committee Vice Chairwoman Donna Brazile; actor and recording artist LL Cool J; talk show hosts Jimmy Kimmel, Bill O'Reilly, and Bill Maher; TV writers and producers Shonda Rhimes (*Grey's Anatomy*, *Scandal*) and Norman Lear (*All in the Family*, *Sanford and Son*); artists Maya Lin and Kara Walker; writer Azar Nafisi; journalist and activist Gloria Steinem, and Senator John McCain.

Finding Your Roots is hosted

by Harvard University professor Henry Louis Gates, Jr., who also directs Harvard's Hutchins Center for African and African American Research. The series undertakes genealogical research and genetic testing on famous and not-so-famous Americans. Typically, Gates presents the ancestral findings personally to each guest in a so-called "book of life," and often uses his own intriguing genealogical background as points of reference. This year the program returns with heightened fact-checking and two new genealogists.

Finding Your Roots also hosts an interactive companion website, where genealogy enthusiasts can upload personal family histories and photos, as well as view submissions by other participants. To learn more or share your genealogical heritage, visit www.pbs.org/weta/finding-your-roots/



Photo: Kara Walker Sari Goodfriend Photography

Artist Kara Walker.

Photo: Mary Ellen



Actor Bill Hader and *Finding Your Roots* host Henry Louis Gates Jr.

Thank You for Your Gifts to Friends of SDPB

Friends of SDPB has received the following memorial gifts.

In memory of Rev. Judeen Johnson of Volga from Gayle Grothe, Brookings, and Joanne Pesicka, Sioux Falls. Judeen found equal joy in classical music and studying the stock market. He was active in the Sons of Norway and Master Gardeners of SD. He had been an active member in Friends of SDPB since 1979.

Charlotte Carver of Sioux Falls provided a gift in memory of Jon Hart.

The following gifts were made in memory of Dwane Ellis, of Lead: Joseph & Laurie Anglin, Carla Caneva, Dora Jean Garlick, Kris Garlick, Joy & Dirk Trowbridge, and

Bob & Elizabeth Young of Spearfish. Priscilla Potts, Donald & Regena Thrall, Kahler Financial Group, and the Rapid City Kennel Club of Rapid City. Loyal & Colleen Brezny, Wendy Lowe, and Susan Orwick of Piedmont. Jacquelyn Fuller and Judith Kennedy of Lead. Marilyn Bates of Sturgis. James & Mindy Moore of Sioux Falls. Rebecca Moore of Moorhead, MN.

Colleen Paulson, Garden City, provided a gift in memory of Shirley Hess, Sioux Falls.

Darrel & Karen Westerman of Chancellor gave in memory of Luverne Mechels.

Ronald & Duska LaCount of Minot, ND gave a gift in memory of Henry

Solsaa, Aurora.

Linda McGrillies & Frank Alesantrino of Boonsboro, MD gave in memory of Walter Pederson, Clark.

New Visionary Society Members:
Paul Thorstenson, Rapid City
Malcom & Cheryl Chapman, Rapid City

Miles & Lisa Beacom, Sioux Falls
Dorothy A. Johnson, Sioux Falls
Marie Ann Ben, Vermillion

New Heritage Circle Heritage Circle members have generously included SDPB in their estate giving.

Bruce Rinehart, Mobridge

To learn how you can support SDPB with your gifts, call Friends of SDPB at 800-333-0789.

Independent Lens Shines in January

Airing Monday nights on SDPB1, **Independent Lens** is television's largest showcase of independent documentary films. For the third year in a row, **Independent Lens** has won **Best Curated Series** from the International Documentary Association. The series has also received 10 News & Documentary Emmy Awards, two Primetime Emmys, 15 George Foster Peabody Awards, five Alfred I. duPont-Columbia Journalism Awards, and seven Academy Award nominations.

Throughout January, SDPB presents more provocative programming from **Independent Lens**:



Rapt Romanians watch bootleg action flicks.

Monday, Jan. 4, 9pm (8 MT) - *Chuck Norris vs. Communism*

In 1980s Romania, thousands of Western films, mostly Hollywood action movies, smashed through the Iron Curtain, opening a window into the free world. A black market VHS racketeer and a courageous female translator brought the magic of film to the people and helped fuel a revolution. Directed by Ilinca Calugareanu.



Lindsey and Dave celebrate their relationship.

Monday, Jan. 11, 9pm (8 MT) - *Autism in Love*

Finding love can be hard enough for anyone, but for those with an autism spectrum disorder, the challenges may seem overwhelming. The disorder can jeopardize communication and social interaction — the core characteristics of a successful relationship. *Autism in Love* offers a warm and stereotype-shattering look at four people as they pursue and manage romantic relationships. Directed by Matt Fuller.



A journey of discovery for a filmmaker who learns her biological father was black.

Monday, Jan. 18, 9pm (8 MT) - *Little White Lie*

Both the bonds and the lies told between family members can run deep. When filmmaker Lacey Schwartz, raised by loving Jewish parents who told her she was white, learns the man she thought was her father is not, she tries to reconcile her newfound African American heritage with her upbringing. But first, she must resolve her feelings about her parents' choice to keep the truth from her.



Maria Hurtado in the abandoned maternity ward of the Los Angeles County-USC Medical Center.

Monday, Jan. 25, 9pm (8 MT) - *No Más Bebés (No More Babies)*

They came to have their babies. They went home sterilized. This is the story of immigrant mothers who sued county doctors, the state, and the U.S. government after they were prodded into sterilizations while giving birth at the Los Angeles County-USC Medical Center during the 1960s and 70s, often based on little more than the question "More babies?" Led by an intrepid, 26-year-old Chicana lawyer and armed with hospital records secretly gathered by a whistle-blowing young doctor, the mothers faced public exposure and stood up to powerful institutions in the name of justice. Directed by Renee Tajima-Peña.

Corporate Support *Our corporate partners continue to support the excellent Television and Radio programming you have come to expect and love from SDPB.*

Aberdeen Parks, Recreation & Forestry Department	Credit Union Association of the Dakotas	Paul Horsted, Dakota Photographic, LLC	Presentation Sisters of Aberdeen Puetz Corporation	South Dakota State Fair
Abourezk Law Firm	Dacotah Bank	Horton Incorporated	Quilters Headquarters	South Dakota State Historical Society
Acupuncture 4 Health	Dacotah Prairie Museum—Granary Rural Cultural Center	Howes Oil	Rapid City Arts Council	South Dakota State Quilt Guild
All Souls Church	Dakota Plains New Holland	Hy-Vee Food Stores	Rapid City Sculpture Project	South Dakota State University
ArtForms Gallery	Dakota State University	IFAM Capital	Regional Health	South Dakota State University – Woodbine Productions
Arts Rapid City	Daktronics	IMED Mobility	Regional Heart Doctors	South Dakota Symphony
Associated General Contractors of South Dakota	Davenport Evans Lawyers	Independent Insurance Agents of SD	Reptile Gardens	South Dakotans for the Arts
Avera Health	Deadwood History (Adams Museum & House/Days of '76/Adams Research & Cultural Center)	Ingalls Homestead	Dr. Aaron Rumpca, Murdo Dental	Southeastern Dental Center – Dr. Daniel Goede
BankWest	Delta Dental of South Dakota	Institute of Lutheran Theology	Sanford Health	Spearfish GMC Cadillac
Bay Leaf Café, Inc.	DeMersseman Jensen Tellinghuisen & Huffman, LLP	Interim HealthCare	SDN Communications	Sunset Pawn, Inc.
Bethesda	East River Electric Power Cooperative	James Szana Trio	Sioux Falls Area Community Foundation	Tabor Czech Days
Black Hills Area Community Foundation	Exceptional Artists	Jerry Sanftner Insurance	Sioux Falls Seminary	Touchstone Energy
Black Hills Blues Society	Family Dentistry of Sioux Falls	Jolly Lane Greenhouse	Siouxland Museums	Turbak Law Office, PC
Black Hills Federal Credit Union	Farmers Union Insurance Companies	Jorgensen Log Homes, Inc. (The) Journey Museum	South Dakota Affiliate of the American College of Nurse Midwives	University of Sioux Falls
Black Hills Film Festival	First Bank and Trust	Keller Williams Realty – Jeff Nelson	South Dakota Agricultural Heritage Museum	University of South Dakota
Black Hills Knowledge Network	First Dakota National Bank	Koch Hazard Architects	South Dakota Art Museum	Vance Thompson Vision
Black Hills Playhouse	Fischer, Rounds & Associates	Lamps and Shades	South Dakota Arts Council	Viken & Riggins Law Firm
Black Hills Regional Eye Institute	Flooring America	Landscape Garden Centers	South Dakota Bar Foundation	Warne Chemical & Equipment Company
Black Hills State University	Founding Fathers	Mr. James Leach, Attorney at Law	South Dakota Community Foundation	Washington Pavilion
Black Hills Symphony	Four Seasons Fabric	LIW Pageant Society	South Dakota Corn	Weigum's Great Plains Landscape Arboretum
Black Hills Unitarian Universalist Fellowship	Gene Hufford Agency	Madison Farmers Elevator	South Dakota Crop Improvement Association	West River Dermatology Clinic – Dr. Roger Knutsen & Dr. Siri Knutsen Larson
Bursch Travel	Great Plains Zoo & Delbridge Museum	Mahlander's	South Dakota Film Festival	Westhills Village Retirement Community
Bush Foundation	Chet Groseclose, Prof. LLC	McCrory Gardens	South Dakota Humanities Council	Wilson, Olson & Nash, PC - Attorneys at Law
Capital Services	Hill City Arts Council	Media One Advertising	South Dakota Space Grant Consortium	World Bicycle Relief
Carter County Museum	Hill City Mercantile	Missouri River Energy Services	South Dakota Speech-Language-Hearing Association	Xcel Energy
Catholic United Financial (The) Center for Western Studies	Hill City Mercantile	National Music Museum		
Children's Museum of South Dakota	Home Federal Bank	North Country Fiber Fair		
CO-OP Architecture		Northern State University		
		NorthWestern Energy		
		Ophthalmology Associates		
		Ophthalmology LTD		
		Prairie Repertory Theatre		

Join us in telling South Dakota's stories. Be an underwriter.

Contact the Corporate Development Manager nearest you.

<p>Ned Gavlick, East River 800-333-0789</p>	<p>Terrie Koehne, West River 800-456-1266</p>
--	--

Volume 47 No. 1

Friends of SDPB Office
PO Box 5000
Brookings, SD 57006
(605) 688-4191 or (800) 333-0789

Ryan Howlett, Friends CEO
(800) 456-0556

SDPB Administrative Office
PO Box 5000
Vermillion, SD 57069
(605) 677-5861 or (800) 456-0766

SDPB Home Page
<http://www.SDPB.org>
press@SDPB.org

SDPB Magazine & Promotion Staff
Katy Beem, Editor
Matti Smith, Marketing Manager
Amber Anders, Continuity Director
Dave Foote, Promotion Producer
Michael Zimny, Social Media
Arianne Wunder, Marketing Intern

Friends of SDPB Board
President Daniel Leikvold, Lead
Vice President Janelle Krause Toman, Pierre
Tom Manzer, Treasurer, Brookings
Greg Blomberg, Secretary, Sioux Falls
Wayne Carney, Fort Pierre
Malcom "Chap" Chapman, Rapid City
Scott German, Peever
Thomas E. Graslie, Rapid City
Marcia Hendrickson, Chancellor
Rebecca Jirava, Brookings
Julie M. Johnson, Aberdeen
Lizabeth Manning, Spearfish
Katrina Lehr-McKinney, Sioux Falls
Waneen Polly, Watertown
Prof. Tim Schorn, Vermillion
John Charles Sternquist, Yankton
Cheryl Eagan Taylor, Sioux Falls

South Dakota Educational Telecommunications Board
Mark Shlanta, Chair, Sioux Falls
Doyle Estes, Hill City
Kay Jorgensen, Spearfish
Rick Knobe, Sioux Falls
Julie Mathiesen, Sturgis
Gerry Schlenker, Canistota
Michael G. Rush, Regents, Pierre

Julie Overgaard, SDPB, Vermillion
David Zolnowsky, BIT, Pierre

SDPB Management Team
Julie Overgaard, Executive Director
Larry Rohrer, Director of Content
SeVern Ashes, Engineering Director
Bob Bosse, Television Director
Fritz Miller, Marketing Director
Kent Osborne, Online Director

– South Dakota Public Broadcasting is a division of the South Dakota Bureau of Information and Telecommunications.
– Friends of SDPB is a 501(c)3 organization.
– SDPB Magazine is printed by Midstates Printing, Aberdeen, SD. Approximately 14,500 copies of the document were printed at an approximate cost of \$.36 per copy. SDPB Magazine (ISSN 1529-1596) is published and mailed monthly for \$10 per year for Friends of SDPB, 815 Medary, Brookings, SD 57006. Periodical postage paid at Brookings, SD, and additional mailing offices.

Postmaster: Send address changes to Friends of SDPB, Box 5000, Brookings, SD 57006. USPS 0764-400



ARE YOUR DUCKS IN A ROW?

Whatever your stage in life, it is a good idea to think about and plan for how your affairs will be handled.

A few simple steps can help ensure your loved ones are protected and that the charitable causes that mean the most to you are remembered.

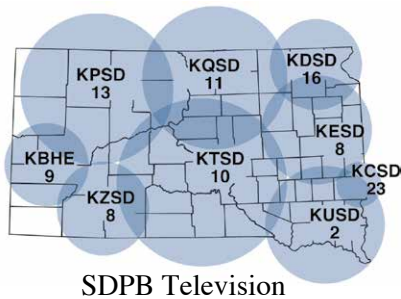
Join the more than 75 families who have made Friends of South Dakota Public Broadcasting part of their estate plans. They will teach children, inform citizens and entertain the people of South Dakota for many years to come.

CONTACT THE FRIENDS OFFICE TO CREATE A LEGACY

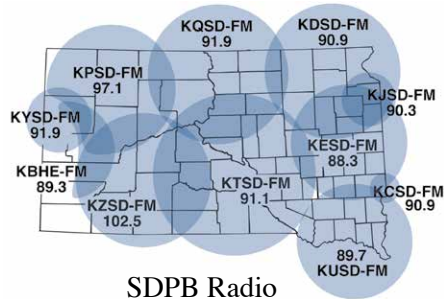
For information on estate planning that includes the Friends of SDPB:
Contact Friends CEO Ryan Howlett
or visit SDPB.org/HeritageCircle



Ryan.Howlett@SDPB.org • 800-456-0556
Friends of SDPB, 300 N. Dakota Ave. Suite 413, Sioux Falls, SD 57104.



SDPB Television



SDPB Radio

Live and on-demand audio and video at SDPB.org



The number on the top of your address is your membership expiration date. The number on the left is your identification. Please use for membership renewals. This will reduce our processing time and speed up your service.

Printed on Recycled Paper



FRONTLINE: Netanyahu at War

Trace Netanyahu's rise to power and his high-stakes fight with the president over Iran's nuclear program.

SDPB1: Tuesday, Jan. 5, 8pm (7 MT)

FRONTLINE®