



SDPB

Magazine

May 2015



DAKOTA



TA

LIFE

INTERESTING PEOPLE, PLACES, & THINGS

Get ready to get *fit*!

Through *fit*, you can access and experience a suite of resources for parents and kids, all designed to help families make *fit* choices and stay healthy.

For parents

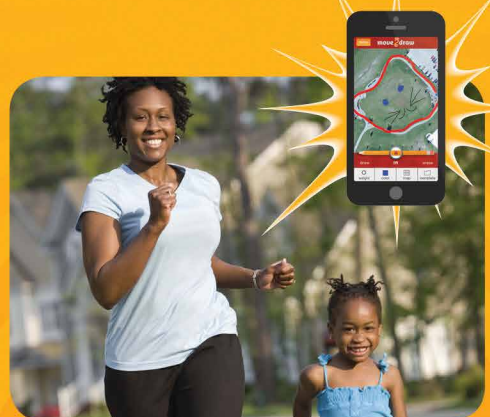
The Sanford *fit*/WebMD website gives parents the tools and resources they need to become healthy role models. Log on to explore healthy recipes, *fit* family challenges and connect with a community of parents and experts for support. Go to webmd.com/parenting/raising-fit-kids.

For kids

The website also offers an experience just for kids. Let them log on and discover entertaining and educational games, videos and challenges. No matter their age, the site has something for all kids to help them make *fit* choices every day and stay *fit* for life. Go to fit.sanfordhealth.org.

On the go

Take *fit* with you wherever you go! Though a series of free and engaging apps, you are never far away from *fit* activities. MOVE2Draw connects fun, friends and *fit* and is a simple and interactive way for kids to move and create their own unique drawings. eMOODicam helps not only capture the moment but also the emotion by allowing kids to bring their feelings to life and share with their friends in an easy-to-use app. Download in your app store today!



Visit us at sanfordhealth.org,
Keyword: *fit*





LAST HURRAH

Jazz Band, Golf, Tennis, and Track Close Out HS Achievement Year

SDPB Online and SDPB Television head across the state this month as the high school championship events season closes with music and athletic events.

All-State Jazz Band musicians meet at Rapid City Central High School May 7-9 to present a concert on May 9. Check in online for photos and tune in online on May 9 to see the final concert live at 8pm (7 MT). The concert airs on SDPB1 Television at 8pm (7 MT) on Saturday, May 23.

On May 18-19:

- Boys and Girls Class B Golf hits the links in Yankton.
- Girls A Golf tees off in Madison.
- Girls AA Golf swings into action in Rapid City.

SDPB Online will be on the scene with results, photos and stats.

Boys Tennis takes to the courts in Brandon and Sioux Falls on May 21-23. SDPB Online will provide photos, stats and results.

The top athletes in Track & Field will meet May 29-30 and SDPB Online will offer photos, stats and results on both days. The preliminary events are May 29 with Class B in Rapid City, Class A in Spearfish and Class AA in Sturgis. On Saturday, May 30, SDPB2 Television, one of the network's three channels, will feature a day of track finals – 10am-5pm (9-4 MT) – from O'Harra Stadium at the South Dakota School of Mines & Technology in Rapid City. Coverage will also stream live online at SDPB.org.

High school achievement events are presented in partnership with the South Dakota High School Activities Association.

Major sponsors of high school activities coverage include Dacotah Bank and Midcontinent Communications. Additional sponsors include Farmers Union Insurance, Independent Insurance Agents of South Dakota and SDN Communications. Also, Sanford Health, Touchstone Energy Cooperatives and Spearfish GMC Cadillac. Also, Dakota Plains New Holland; Delta Dental of South Dakota; Fischer, Rounds & Associates; South Dakota State University; and Vance Thompson Vision. And South Dakota Crop Improvement Association, Subway and Taco John's.

All-State Jazz Band

Rapid City Central High School

SDPB Online Live

Saturday, May 9, 8pm (7 MT)

SDPB1 Television:

Saturday, May 23, 8pm (7 MT)

Boys & Girls B Golf

SDPB Online: May 18-19

Hillcrest Golf & Country Club, Yankton

Girls A Golf

SDPB Online, May 18-19

Madison Country Club, Madison

Girls AA Golf

SDPB Online, May 18-19

Meadowbrook Golf Course, Rapid City

Boys Tennis

Brandon Valley Middle School

McKenna Park & Washington High School,

Sioux Falls

SDPB Online, May 21-23

All-State Band

SDPB1 TV: Sunday, May 24, 2pm (1 MT)

State Track & Field Finals

May 29 – SDPB Online: photos, results, stats

Class B - O'Harra Stadium (SDSM&T), Rapid City

Class A - Lyle Hare Stadium (BHSU), Spearfish

Class AA - Woodle Field, Sturgis

May 30 – Finals, O'Harra Stadium

SDPB Online: live streaming online from the event, photos, results, stats

SDPB2 TV; Track events, awards

Saturday, May 30, 10am-5pm (9am-4pm MT)



The open cut in Lead dominated the landscape in the early 1900s. Today, it's a tourist stop.



Treasure Hunting

An Archive of Rare Media Journeys into South Dakota's Past

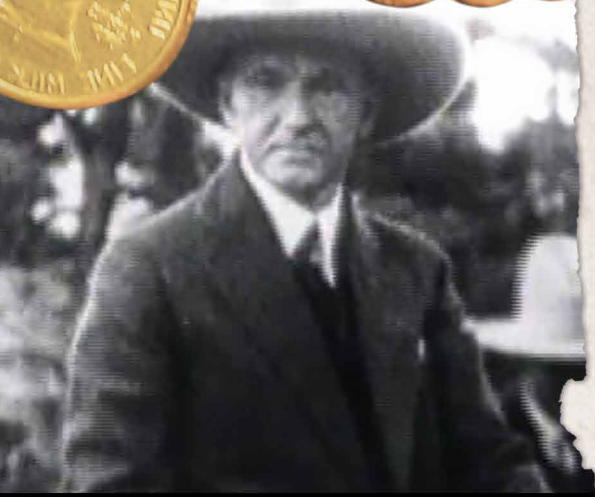
What do Calvin Coolidge, Franklin Roosevelt, Dwight Eisenhower and John F. Kennedy have in common? Each President's visit to South Dakota is documented in an SDPB treasure trove – **Images of the Past**.

The online archive – at SPDB.org/ImagesOfThePast – offers glimpses into South Dakota's history.

Images of the Past is a South

Dakota Public Broadcasting project that brings historical films, photos and other media to the web. The rare archives, and the short video stories that help bring them alive, are available as online features and occasionally, as programs on SDPB Television.

The archive offers a new take on our state's fascinating past. Volumes have been written about South Dakota history, but in **Images of the**



In 1927, President Calvin Coolidge visited the site where the Mount Rushmore carvings would be created.



Franklin D. Roosevelt stopped by Mount Rushmore in 1936 for the dedication of the Jefferson sculpture. At right is sculptor Gutzon Borglum. At left is South Dakota Governor Tom Berry.



JFK visited South Dakota in 1962 to dedicate the Oahe Dam.

Past, the state's story is also told in drawings, photographs, film, video and more. **Images of the Past** offers a fresh look at images of South Dakota's iconic destinations and people, as well as some little-known places, events, and people in South Dakota's past.

The **Images** archive comes alive for classrooms, too, with a database and lesson-planning information for teachers at SDPB's digital library, accessible through a link at the **Images** web site. The site includes classroom or homeschool activities and lesson plans for various online short features.

Most of the film, video, and photos seen in SDPB's **Images of the Past** are from the collection of Wayne Paanenen, owner of Historical Footprints in Lead. Paanenen's collection contains some of the earliest film shot in South Dakota, as well as more recently created images from still pictures and video. All together, the collection represents one of the deepest archives of South Dakota historical media.

The web features range from the early 20th century to the present. Most are less than 5 minutes long. Here are a few of the highlights:

- Building Oahe Dam – 1948-1959
- Mount Rushmore Carvers
- JFK in South Dakota – 1962
- Dwight Eisenhower at Mount Rushmore – June 11, 1953
- FDR at Mount Rushmore – 1936
- Calvin Coolidge at Mount Rushmore – 1937

Take a journey with **Images** and explore the past.

TV Specials

SDPB1: Sunday, May 3, 3pm (2 MT)

Images of the Past *The South Dakota State Fair*

Step back a century into Huron of 1912. **Images of the Past** *The South Dakota State Fair* takes us to a time when people dressed up for the State Fair and our agricultural roots were a far larger part of South Dakota life. The 17 minutes of silent film included in the program was provided by the South Dakota State Historical Society. You'll learn how the historic film was discovered and look at some of the same locations a century later.

SDPB1: Sunday, May 3, 3:30pm (2:30 MT)

Images of the Past *The Historical Footprints Collection*

Tune in for a half-hour overview overview of the **Images of the Past** online content library, with a focus on some compelling video artifacts. Some of the images recall people and places we know and recognize, while others provide rare views of South Dakota landscapes and communities much changed over time or lost altogether.

SDPB1: Thursday, May 7, 8:30pm (7:30 MT)

Images of the Past *Deadwood's Days of '76*

A new half-hour SDPB Television production, **Images of the Past** *Deadwood's Days of '76* features photographs and video of the famed celebration and rodeo in the Northern Black Hills, with images ranging from 1924 to the present. The program premieres on Thursday, May 7, at 8:30pm (7:30 MT) with an encore on Sunday, May 10, at 1:30pm (12:30 MT).

President Dwight D. Eisenhower made a speech at Mount Rushmore in 1953.



The Mammoth Site near Hot Springs was discovered during a construction project in 1974.



SDPB-TV Daytime Programming


Primetime listings on pages 8-15

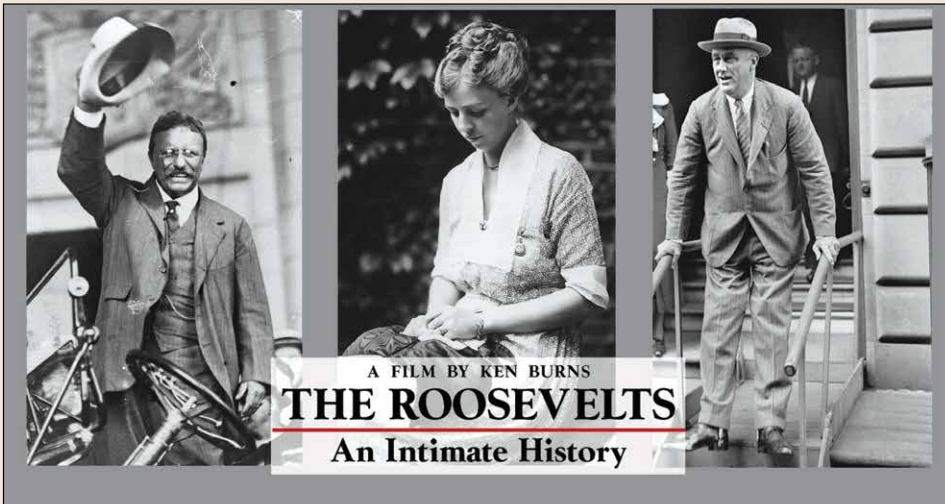
SDPB1	WEEKDAYS	SATURDAYS	SUNDAYS
5am / 4 MT	Newsline	Knitting Daily	Dakota Life ▼
5:30/4:30 MT	Yoga	Dakota Life ▼	Peep & the Big Wide World
6am / 5 MT	BBC World News	Barney & Friends	Curious George
6:30/5:30 MT	Caillou	Angelina Ballerina	Curious George
7am / 6 MT	Curious George	Curious George	Daniel Tiger's Neighborhood
7:30/6:30 MT	Curious George	Curious George	Daniel Tiger's Neighborhood
8am / 7 MT	Daniel Tiger's Neighborhood	Daniel Tiger's Neighborhood	Sesame Street Shorts
8:30/7:30 MT	Daniel Tiger's Neighborhood	Daniel Tiger's Neighborhood	Super Why!
9am / 8 MT	Clifford the Big Red Dog	WordWorld	Dinosaur Train
9:30/8:30 MT	Thomas & Friends	Bob the Builder	WordGirl
10am / 9 MT	Dinosaur Train	It's Sew Easy	Cat in the Hat Knows a Lot about That
10:30/9:30 MT	Dinosaur Train	Fons & Porter's Love of Quilting	Religion & Ethics Newsweekly
11am / 10 MT	Peg + Cat	Quilt in a Day	McLaughlin Group
11:30/10:30MT	Sid the Science Kid	Sewing with Nancy	Market to Market
Noon / 11 MT	Sesame Street	Quilting Arts	Native Report
12:30/11:30MT		Rough Cut – Woodworking	Motorweek
1pm / Noon MT	Sesame Street Shorts	Woodsmith Shop	Repeat of previous Thursday 8pm (7 MT)
1:30/12:30 MT	Cat in the Hat Knows a Lot about That	This Old House Hour	
2pm / 1 MT	Curious George		Documentary, news, science, nature
2:30/1:30 MT	Educational programming	Martha Bakes	
3pm / 2 MT	Arthur	America's Test Kitchen	
3:30/2:30MT	Odd Squad	The Victory Garden's Edible Feast	
4pm / 3 MT	Wild Kratts	Prairie Yard & Garden	Rick Steves' Europe
4:30 / 3:30 MT	Cyberchase	America's Heartland	Nature Adventures ▼
5pm / 4 MT	Martha Speaks		Antiques Roadshow
5:30 / 4:30 MT	Nightly Business Report	Classic Gospel	

SDPB2	MONDAYS	TUESDAYS	WEDNESDAYS	THURSDAYS	FRIDAYS	SATURDAYS	SUNDAYS
5am / 4 MT	Newsline	Newsline	Newsline	Newsline	Newsline	Religion & Ethics	To the Contrary
5:30/4:30 MT	Tavis Smiley	Tavis Smiley	Tavis Smiley	Tavis Smiley	Tavis Smiley	Wealthtrack	Washington Week
6am / 5 MT	Washington Week	Global 3000	To the Contrary	Scully/World Show	Well Read	To the Contrary	McLaughlin Group
6:30/5:30 MT	Religion & Ethics	Focus on Europe	Wealthtrack	Second Opinion	Closer to Truth	McLaughlin Group	Charlie Rose
7am / 6 MT			America ReFramed				Focus on Europe
7:30/6:30 MT	Documentary, news, science, nature & repeats of previous day's SDPB2 primetime programming	Documentary, news, science, nature & repeats of previous day's SDPB2 primetime programming	followed by documentary, news, science, nature & repeats of previous day's SDPB2 primetime programming	Documentary, news, science, nature & repeats of previous day's SDPB2 primetime programming	Documentary, news, science, nature & repeats of previous day's SDPB2 primetime.	Documentary, news, science, nature & repeats of previous day's SDPB2 primetime programming	Global 3000
8am / 7 MT							America ReFramed
8:30/7:30 MT							
9am / 8 MT							
9:30/8:30 MT							
10am / 9 MT					Local USA	Wealthtrack	
10:30/9:30 MT					Forsaken Fields	Religion & Ethics	
11am / 10 MT							Documentary, news, science, nature
11:30/10:30MT	On Call ▼	Tavis Smiley	South Dakota Focus ▼	Tavis Smiley	Tavis Smiley		
Noon / 11 MT	Washington Week	Global 3000	To the Contrary	Scully/World Show	Well Read		
12:30/11:30MT	Religion & Ethics	Focus on Europe	Wealthtrack	Second Opinion	Closer to Truth	History, Documentary & repeats of top programming from previous week	
1pm / Noon MT		Documentary, news, science, nature & repeats of previous day's SDPB2 primetime programming	America ReFramed followed by documentary, news, science, nature & repeats of previous day's SDPB2 primetime programming	Documentary, news, science, nature & repeats of previous day's SDPB2 primetime programming	Documentary, news, science, nature & repeats of previous day's SDPB2 primetime programming		To the Contrary
1:30/12:30 MT	Documentary, news, science, nature						Washington Week
2pm / 1 MT							McLaughlin Group
2:30/1:30 MT							Charlie Rose
3pm/2 MT							Focus on Europe
3:30/2:30MT							Global 3000
4pm / 3 MT	South Dakota Focus ▼	Newsline		Newsline	Newsline	To The Contrary	
4:30 / 3:30 MT		Journal	On Call ▼	Journal	Journal	Washington Week	Documentary
5pm / 4 MT						NewsHour Wkend	NewsHour Wkend
5:30 / 4:30 MT	Documentary	Documentary	Documentary	Documentary	Documentary	Charlie Rose	Dakota Life ▼

Create – SDPB3 Programming

SDPB3	SUNDAY & WEDNESDAY		MONDAY & FRIDAY	TUESDAY & THURSDAY	SATURDAY THEME DAYS	
5am / 4 MT	Knitting Daily		Quilting Arts	Knit & Crochet Now!	May 2 "Mexican Fiesta" May 9 "Celebrate Mom" May 16 "Spring Garden" May 23 "Red, White And BBQ" May 30 "Pretty as a Picture" Photography.	
5:30/4:30 MT	Beauty of Oil Painting		Paint This	Joy of Painting		
6am / 5 MT	Pati's Mexican Table		Perfect Day/ Seafood Cookoff (5/15)	Chef John Besh's Family Table		
6:30/5:30 MT	Mexico – One Plate at a Time		Caprial & John's Kitchen	P. Allen Smith's Garden to Table		
7am / 6 MT	Modern Irish Food/ Barbeque U (5/20)		Ciao Italia	Bringing It Home		
7:30/6:30 MT	Cooking w/ Nick/Moveable Feast (5/6)		Cooking Confidence/ Chef's Life (5/15)	Christina		
8am / 7 MT	OpenRoad/ Islands without Cars (5/20)		Richard Bangs' Adventures with Purpose	Travel with Rudy Maxa		
8:30/7:30 MT	Family Travel		Richard Bangs' Adventures with Purpose	In the Americas/ Equitrekking (5/5)		
9am / 8 MT	Lakota Berenstain	Ask This Old House	This Old House	Hometime		
9:30/8:30 MT	American Woodshop		Rough Cut – Woodworking	Woodsmith Shop		
10am / 9 MT	Greener World	Garden Smart	P. Allen Smith's Garden Home	The Victory Garden's Edible Feast		
10:30/9:30 MT	Katie Brown Workshop		Beads, Baubles and Jewels	For Your Home		
11am / 10 MT	Various	Knitting Daily	Quilting Arts	Knit & Crochet Now!		
11:30/10:30MT	Various	Oil Painting	Paint This	Joy of Painting		
Noon/ 11 MT	Dinosaur Train	Mexican Table	Perfect Day/ Seafood Cookoff (5/15)	Chef John Besh's Family Table		Signing Time!
12:30/11:30MT	Peg + Cat	Mexico – One Plate	Caprial & John's Kitchen	P. Allen Smith's Garden to Table		Biz Kid\$
1pm/ Noon MT	Cat in the Hat	Cooking	Ciao Italia	Bringing It Home		Zula Patrol
1:30/12:30 MT	Odd Squad	Cooking	Cooking Confidence/ Chef's Life (5/15)	Christina		Space Racers
2pm/ 1 MT	Wild Kratts	Travel	Richard Bangs' Adventures with Purpose	Travel with Rudy Maxa		SciGirls
2:30/1:30 MT	Arthur	Family Travel	Richard Bangs' Adventures with Purpose	In the Americas/ Equitrekking (5/5)		Arthur
3pm/2 MT	Cyberchase	Rick Steves	Rick Steves' Europe	Rick Steves' Europe		WordGirl
3:30/2:30MT	Barney & Friends	Amer. Woodshop	Rough Cut – Woodworking	Woodsmith Shop		Wild Kratts
4pm/ 3 MT	Mister Rogers	Garden Smart	P. Allen Smith's Garden Home	The Victory Garden's Edible Feast		Little Amadeus
4:30/3:30MT	Maya & Miguel	Katie Brown	Beads, Baubles and Jewels	For Your Home		Zoboomafoo
5pm / 4 MT	Berenstain Bears	Ask This Old House	This Old House	Hometime		Martha Speaks
5:30/4:30 MT	Clifford	Cooking	Cooking with Nick Stellino	Cooking with Nick Stellino		Nature Adven. 
6pm / 5 MT	Mexico – One Plate at a Time		Simply Ming	Sara's Weeknight Meals		May 2 "Mexican Fiesta" May 9 "Celebrate Mom" May 16 "Spring Garden" May 23 "Red, White And BBQ" May 30 "Pretty as a Picture" Photography.
6:30/5:30 MT	Hubert Keller: Secrets of a Chef		Essential Pepin	Baking with Julia		
7pm / 6 MT	Martha Stewart	Lidia's Kitchen	Lidia's Kitchen	Martha Bakes		
7:30/6:30 MT	America's Test Kitchen		America's Test Kitchen	America's Test Kitchen		
8pm / 7 MT	Taste of Vietnam	Cooking	New Scandinavian/Back to Basics (5/25)	Taste of Vietnam		
8:30/7:30 MT	Back to Basics	Cooking	Cooking with Nick Stellino	Cooking with Nick Stellino		
9pm / 8 MT	Ask This Old House		This Old House	Hometime		
9:30/8:30 MT	Rick Steves' Europe		Rick Steves' Europe	Rick Steves' Europe		
10pm / 9 MT	Music Voyager		Travelscope	Burt Wolf: Travels and Traditions		
10:30/9:30 MT	Martha Stewart	Lidia's Kitchen	Lidia's Kitchen	Martha Bakes		
11pm / 10 MT	America's Test Kitchen		America's Test Kitchen	America's Test Kitchen		
11:30/10:30MT	Mexico – One Plate at a Time		Simply Ming	Sara's Weeknight Meals		
Mid./ 11 MT	Pati's Mexican Table		Perfect Day/ Seafood Cookoff (5/15)	Chef John Besh's Family Table		
12:30/11:30MT	Rick Steves' Europe		Rick Steves' Europe	Rick Steves' Europe		
1am/Mid. MT	Martha Stewart	Lidia's Kitchen	Lidia's Kitchen	Martha Bakes		
1:30/12:30 MT	America's Test Kitchen		America's Test Kitchen	America's Test Kitchen		
2am/ 1 MT	Taste of Vietnam	Cooking	New Scandinavian/Back to Basics (5/25)	Taste of Vietnam		
2:30/1:30 MT	Cooking w/ Nick	Cooking	Cooking with Nick Stellino	Cooking with Nick Stellino		
3am/2 MT	Ask This Old House		This Old House	Hometime		
3:30/2:30MT	Rick Steves' Europe		Rick Steves' Europe	Rick Steves' Europe		
4am/3 MT	Music Voyager		Travelscope	Burt Wolf: Travels & Traditions		
4:30/3:30 MT	Martha Stewart	Lidia's Kitchen	Lidia's Kitchen	Martha Bakes		

- SDPB Television programs are Closed Captioned for the Hearing Impaired.
- Schedule is subject to change. Visit SDPB.org/tvschedules for program details and schedule changes.
-  Indicates locally produced programming.
- SDPB2 and SDPB3 are available free over-the-air via antenna and on most cable systems. Call your local provider to find out where you can find them on your cable system.



Tune in for an encore of **The Roosevelts**. The ground-breaking seven-part series airs over seven weeks, with one episode a week. The series, created by master filmmaker Ken Burns, examines the history and accomplishments of Theodore Roosevelt, Eleanor Roosevelt and Franklin Roosevelt.

SDPB1: Tuesdays, May 5-June 16, 7pm (6 MT)

SDPB2: Fridays, May 15-June 26, 6 & 11pm (5 & 10 MT)

FRIDAY – MAY 1

SDPB1

- 6:00 (5:00 MT) **PBS NewsHour**
- 7:00 (6:00 MT) **Washington Week**
- 7:30 (6:30 MT) **Charlie Rose** *The Week*
- 8:00 (7:00 MT) **McLaughlin Group**
- 8:30 (7:30 MT) **Market to Market**
- 9:00 (8:00 MT) **America's Ballroom Challenge**
Part 2 of 3
- 10:00 (9:00 MT) **Night of the Proms**
- 10:30 (9:30 MT) **BBC World News**
- 11:00 (10:00 MT) **Charlie Rose**
- Midnight (11:00 MT) **Tavis Smiley**

SDPB2

- 6:00 (5:00 MT) **The Day the '60s Died**
- 7:00 (6:00 MT) **The Draft**
- 8:00 (7:00 MT) **American Experience** *My Lai*
- 9:00 (8:00 MT) **PBS NewsHour**
- 10:00 (9:00 MT) **Nightly Business Report**
- 10:30 (9:30 MT) **Journal**
- 11:00 (10:00 MT) **The Day the '60s Died**
- Midnight (11:00 MT) **The Draft**

SATURDAY – MAY 2

SDPB1

- 6:00 (5:00 MT) **Lawrence Welk**
- 7:00 (6:00 MT) **Doc Martin**
- 8:00 (7:00 MT) **Keeping Up Appearances**
- 8:30 (7:30 MT) **As Time Goes By**
- 9:00 (8:00 MT) **Last of the Summer Wine**
- 9:30 (8:30 MT) **Red Green Show**
- 9:54 (8:54 MT) **Star Gazers**
- 10:00 (9:00 MT) **No Cover, No Minimum** ▼
Billy Lurken
- 11:00 (10:00 MT) **Austin City Limits** *Beck*

SDPB2

- 1:00 (Noon MT) **The Day the '60s Died**
- 2:00 (1:00 MT) **The Draft**
- 3:00 (2:00 MT) **American Experience** *My Lai*
- 4:00 (3:00 MT) **To the Contrary**
- 4:30 (3:30 MT) **Washington Week**
- 5:00 (4:00 MT) **PBS NewsHour Weekend**
- 5:30 (4:30 MT) **Charlie Rose** *The Week*
- 6:00 (5:00 MT) **Focus on Europe**
- 6:30 (5:30 MT) **Global 3000**

7:00 (6:00 MT) Japanese American Lives

Mrs. Judo: Be Strong, Be Gentle, Be Beautiful/ Mrs. Judo: Don't Lose Your Soul/Honor & Sacrifice

9:00 (8:00 MT) America ReFramed *Perfect Strangers*

10:30 (9:30 MT) Take 2

11:00 (10:00 MT) Japanese American Lives

Mrs. Judo: Be Strong, Be Gentle, Be Beautiful/ Mrs. Judo: Don't Lose Your Soul/Honor & Sacrifice

SUNDAY – MAY 3

SDPB1

- 1:00 (Noon MT) **South Dakota Focus** ▼
Invasive Species
- 2:00 (1:00 MT) **South Dakota Symphony's Young People's Concert** ▼ *Holst's "The Planets"*
- 3:00 (2:00 MT) **Images of the Past** ▼ *The South Dakota State Fair*
- 3:30 (2:30 MT) **Images of the Past** ▼ An overview of the archive
- 4:00 (3:00 MT) **Rick Steves' Europe**
- 4:30 (3:30 MT) **Nature Adventures** ▼ *Baby Animals*
- 5:00 (4:00 MT) **Antiques Roadshow** *Santa Clara – Hour Two*
- 6:00 (5:00 MT) **Lawrence Welk**
- 7:00 (6:00 MT) **Call the Midwife** Season 4, Part 6 of 8
- 8:05 (7:05 MT) **Masterpiece Classic** *Mr. Selfridge* Season 3, Part 6 of 8
- 9:00 (8:00 MT) **Masterpiece Classic** *Wolf Hall* Part 5 of 6
- 10:04 (9:04 MT) **Hidden Killers of the Tudor Home**
- 11:04 (10:04 MT) **Globe Trekker** *Myanmar*
- Midnight (11:00 MT) **Washington Week**

SDPB2

- 4:00 (3:00 MT) **Survival: Lives in the Balance**
The Plant that Cures Malaria (Uganda)
- 5:00 (4:00 MT) **PBS NewsHour Weekend**
- 5:30 (4:30 MT) **Images of the Past** ▼
- 6:00 (5:00 MT) **Great Conversations** *Timothy Geithner and James Surowiec*

- 7:00 (6:00 MT) **Nature Mystery Monkeys of Shangri-La**
- 8:00 (7:00 MT) **Voces on PBS Now en Espanol**
- 9:00 (8:00 MT) **Global Voices Before the Revolution**
- 10:00 (9:00 MT) **This Is My Home Now**
- 10:30 (9:30 MT) **Our American Family: The Furutas**
- 11:00 (10:00 MT) **Nature Mystery Monkeys of Shangri-La**
- Midnight (11:00 MT) **Voces on PBS Now en Espanol**

MONDAY – MAY 4

SDPB1

- 6:00 (5:00 MT) **PBS NewsHour**
- 7:00 (6:00 MT) **Antiques Roadshow** *Santa Clara III / Biloxi III*
- 9:00 (8:00 MT) **Independent Lens** *Kumu Hina*
- 10:00 (9:00 MT) **Red Green Show**
- 10:24 (9:24 MT) **Star Gazers**
- 10:30 (9:30 MT) **BBC World News**
- 11:00 (10:00 MT) **Charlie Rose**
- Midnight (11:00 MT) **Tavis Smiley**

SDPB2

- 6:00 (5:00 MT) **Filipino American Lives**
Harana: The Search for the Lost Art/ Delano Manongs: Forgotten Heroes of the United Farm Workers
- 8:00 (7:00 MT) **Local USA Immigration: Home**
- 8:30 (7:30 MT) **Film School Shorts** *Sugar and Spice*
- 9:00 (8:00 MT) **PBS NewsHour**
- 10:00 (9:00 MT) **Nightly Business Report**
- 10:30 (9:30 MT) **Journal**
- 11:00 (10:00 MT) **Filipino American Lives**
Harana: The Search for the Lost Art/ Delano Manongs: Forgotten Heroes of the United Farm Workers

TUESDAY – MAY 5

SDPB1

- 6:00 (5:00 MT) **PBS NewsHour**
- 7:00 (6:00 MT) **The Roosevelts: An Intimate History** *Get Action (1858-1901)* Part 1 of 7
- 9:00 (8:00 MT) **Frontline** *Outbreak*
- 10:00 (9:00 MT) **Keeping Up Appearances**
- 10:30 (9:30 MT) **BBC World News**
- 11:00 (10:00 MT) **Charlie Rose**
- Midnight (11:00 MT) **Tavis Smiley**



During World War II, an assault on the U.S. East Coast lasted three-and-a-half years and claimed 5,000 lives. **NOVA** *Nazi Attack on America* follows undersea explorer Bob Ballard to the wreck of one of the attack craft, a German submarine that lies at the bottom of the gulf just a few miles off New Orleans.

SDPB1: Wednesday, May 6, 8pm (7 MT)

SDPB2: Thursday, May 7, 6 & 11pm (5 & 10 MT)



Take a trip to the 1950s Great Britain and the fictional Cotswold village of Kembleford, where the parish priest, Father Brown, takes on matters spiritual and criminal, much to the chagrin of the local police. The series of one-hour mysteries is based on the character created by novelist G.K. Chesterton.

SDPB1: Thursdays, beginning May 7, 9pm (8 MT)
Saturdays, beginning May 9, 7pm (6 MT)

(May 5, continued)

SDPB2

6:00 (5:00 MT) **War for Guam**
7:00 (6:00 MT) **America ReFramed 9-Man**
9:00 (8:00 MT) **PBS NewsHour**
10:00 (9:00 MT) **Nightly Business Report**
10:30 (9:30 MT) **Journal**
11:00 (10:00 MT) **America ReFramed 9-Man**

WEDNESDAY – MAY 6

SDPB1

6:00 (5:00 MT) **PBS NewsHour**
7:00 (6:00 MT) **Nature Parrot Confidential**
8:00 (7:00 MT) **NOVA Nazi Attack on America**
9:00 (8:00 MT) **Super Skyscrapers Building the Future**
10:00 (9:00 MT) **Last of the Summer Wine**
10:30 (9:30 MT) **BBC World News**
11:00 (10:00 MT) **Charlie Rose**
Midnight (11:00 MT) **Tavis Smiley**

SDPB2

6:00 (5:00 MT) **Quietest Place on Earth**
7:00 (6:00 MT) **Independent Lens Kumu Hina**
8:00 (7:00 MT) **Frontline Outbreak**
9:00 (8:00 MT) **PBS NewsHour**
10:00 (9:00 MT) **Nightly Business Report**
10:30 (9:30 MT) **Journal**
11:00 (10:00 MT) **Quietest Place on Earth**
Midnight (11:00 MT) **Independent Lens Kumu Hina**

THURSDAY – MAY 7

SDPB1

6:00 (5:00 MT) **PBS NewsHour**
7:00 (6:00 MT) **On Call** **Orthopedics**
8:00 (7:00 MT) **Dakota Life**
8:30 (7:30 MT) **Images of the Past**
Deadwood's Days of '76
9:00 (8:00 MT) **Father Brown** A new British mystery series featuring a crime-solving priest.
9:54 (8:54 MT) **Star Gazers**
10:00 (9:00 MT) **As Time Goes By**
10:30 (9:30 MT) **BBC World News**

11:00 (10:00 MT) **Charlie Rose**
Midnight (11:00 MT) **Tavis Smiley**

SDPB2

6:00 (5:00 MT) **NOVA Nazi Attack on America**
7:00 (6:00 MT) **Operation Maneater Great White Shark**
8:00 (7:00 MT) **Secrets of the Dead The Mona Lisa Mystery**
9:00 (8:00 MT) **PBS NewsHour**
10:00 (9:00 MT) **Nightly Business Report**
10:30 (9:30 MT) **Journal**
11:00 (10:00 MT) **NOVA Nazi Attack on America**
Midnight (11:00 MT) **Operation Maneater Great White Shark**

FRIDAY – MAY 8

SDPB1

6:00 (5:00 MT) **PBS NewsHour**
7:00 (6:00 MT) **Washington Week**
7:30 (6:30 MT) **Charlie Rose The Week**
8:00 (7:00 MT) **McLaughlin Group**
8:30 (7:30 MT) **Market to Market**
9:00 (8:00 MT) **America's Ballroom Challenge Part 3 of 3**
10:00 (9:00 MT) **Night of the Proms**
10:30 (9:30 MT) **BBC World News**
11:00 (10:00 MT) **Charlie Rose**
Midnight (11:00 MT) **Tavis Smiley**

SDPB2

6:00 (5:00 MT) **E Haku Inoa To Weave a Name**
7:00 (6:00 MT) **Independent Lens Left by the Ship**
8:00 (7:00 MT) **Penelope**
9:00 (8:00 MT) **PBS NewsHour**
10:00 (9:00 MT) **Nightly Business Report**
10:30 (9:30 MT) **Journal**

11:00 (10:00 MT) **E Haku Inoa To Weave a Name**

Midnight (11:00 MT) **Independent Lens Left by the Ship**

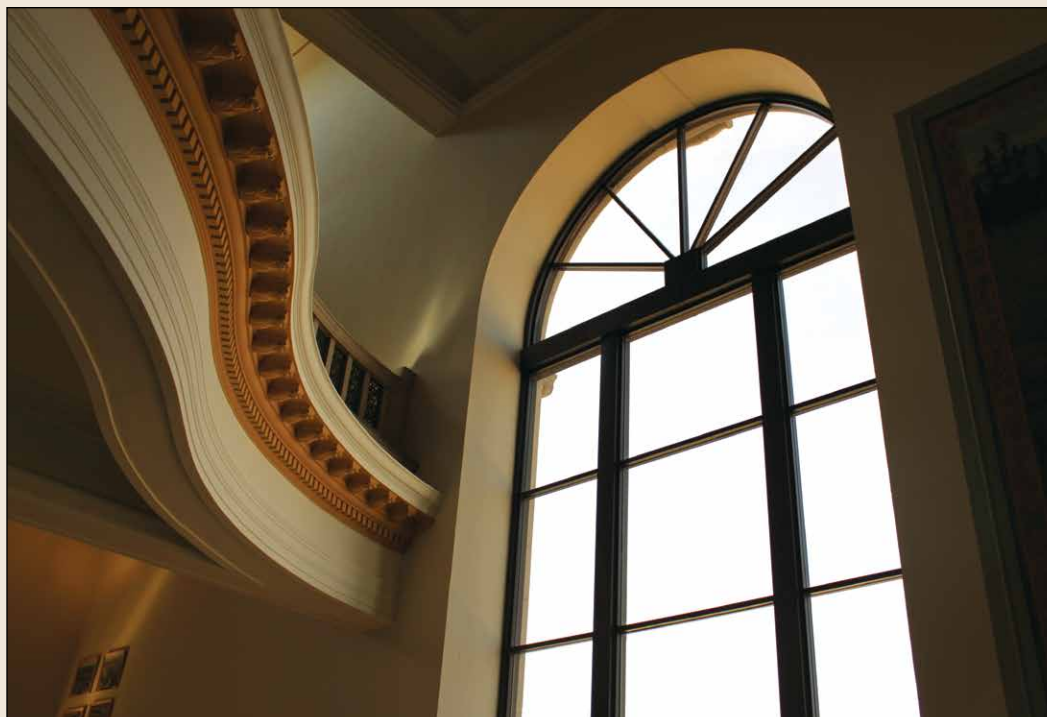
SATURDAY – MAY 9

SDPB1

6:00 (5:00 MT) **Lawrence Welk**
7:00 (6:00 MT) **Father Brown** A new British mystery series featuring a crime-solving priest.
8:00 (7:00 MT) **Keeping Up Appearances**
8:30 (7:30 MT) **As Time Goes By**
9:00 (8:00 MT) **Last of the Summer Wine**
9:30 (8:30 MT) **Red Green Show**
9:54 (8:54 MT) **Star Gazers**
10:00 (9:00 MT) **No Cover, No Minimum**
Sena Ehrhardt
11:00 (10:00 MT) **Austin City Limits Bonnie Raitt/ Mavis Staples**

SDPB2

1:00 (Noon MT) **E Haku Inoa To Weave a Name**
2:00 (1:00 MT) **Independent Lens Left by the Ship**
3:00 (2:00 MT) **Penelope**
4:00 (3:00 MT) **To the Contrary**
4:30 (3:30 MT) **Washington Week**
5:00 (4:00 MT) **PBS NewsHour Weekend**
5:30 (4:30 MT) **Charlie Rose The Week**
6:00 (5:00 MT) **Focus on Europe**
6:30 (5:30 MT) **Global 3000**
7:00 (6:00 MT) **Japanese American Lives Stories from Tohoku**
8:00 (7:00 MT) **Mr. Cao Goes to Washington**
9:00 (8:00 MT) **America ReFramed 9-Man**
11:00 (10:00 MT) **Japanese American Lives Stories from Tohoku**



Journey into South Dakota's colorful past with **Temples of Justice**. The SDPB Television documentary explores the history of the state's county courthouses, and uncovers amazing architecture and the stories of some scalawags and swindlers in the process.

SDPB1: Sunday, May 10, 2pm (1 MT)

SDPB2: Sunday, May 17, 4pm (3 MT)

SUNDAY – MAY 10

SDPB1

- 1:00 (Noon MT) **Dakota Life** ▼
- 1:30 (12:30 MT) **Images of the Past** ▼
Deadwood's Days of '76
- 2:00 (1:00 MT) **Temples of Justice** ▼
- 3:00 (2:00 MT) **Caring for Mom & Dad**
- 4:00 (3:00 MT) **Rick Steves' Europe**
- 4:30 (3:30 MT) **Nature Adventures** ▼ *Things with Wings*
- 5:00 (4:00 MT) **Antiques Roadshow** *Santa Clara III*
- 6:00 (5:00 MT) **Lawrence Welk**
- 7:00 (6:00 MT) **Call the Midwife** Season 4, Part 7 of 8
- 8:05 (7:05 MT) **Masterpiece Classic** *Mr. Selfridge* Season 3, Part 7 of 8
- 9:00 (8:00 MT) **Masterpiece Classic** *Wolf Hall* Part 6 of 6
- 10:04 (9:04 MT) **Wing and a Prayer**
- 11:02 (10:02 MT) **Globe Trekker** *Antarctica*
- Midnight (11:00 MT) **Washington Week**

SDPB2

- 5:00 (4:00 MT) **PBS NewsHour Weekend**
- 5:30 (4:30 MT) **Images of the Past** ▼ *The South Dakota State Fair*
- 6:00 (5:00 MT) **Great Conversations** *Jessye Norman and Gloria Steinem*
- 7:00 (6:00 MT) **Nature** *Parrot Confidential*
- 8:00 (7:00 MT) **Voces on PBS** *El Poeta*
- 9:00 (8:00 MT) **Global Voices** *Here Comes Uncle Joe*
- 10:00 (9:00 MT) **Global Voices** *A Village Called Versailles*
- 11:00 (10:00 MT) **Nature** *Parrot Confidential*
- Midnight (11:00 MT) **Voces on PBS** *El Poeta*

MONDAY – MAY 11

SDPB1

- 6:00 (5:00 MT) **PBS NewsHour**

- 7:00 (6:00 MT) **Antiques Roadshow** *Charleston I / Washington, DC I*
- 9:00 (8:00 MT) **Independent Lens** *Born to Fly: Elizabeth Streb vs. Gravity*
- 10:00 (9:00 MT) **Red Green Show**
- 10:24 (9:24 MT) **Star Gazers**
- 10:30 (9:30 MT) **BBC World News**
- 11:00 (10:00 MT) **Charlie Rose**
- Midnight (11:00 MT) **Tavis Smiley**

SDPB2

- 6:00 (5:00 MT) **Pacific Heartbeat** *Under a Jarvis Moon/ The Illness & The Odyssey*
- 8:00 (7:00 MT) **Local USA** *Immigration: On the Border*
- 8:30 (7:30 MT) **Film School Shorts** *Final Ascent*
- 9:00 (8:00 MT) **PBS NewsHour**
- 10:00 (9:00 MT) **Nightly Business Report**
- 10:30 (9:30 MT) **Journal**
- 11:00 (10:00 MT) **Pacific Heartbeat** *Under a Jarvis Moon/ The Illness & The Odyssey*

TUESDAY – MAY 12

SDPB1

- 6:00 (5:00 MT) **PBS NewsHour**
- 7:00 (6:00 MT) **The Roosevelts: An Intimate History** *In the Arena (1901-1910)* Part 2 of 7
- 9:00 (8:00 MT) **Frontline** *The Trouble with Chicken*
- 10:00 (9:00 MT) **Keeping Up Appearances**
- 10:30 (9:30 MT) **BBC World News**
- 11:00 (10:00 MT) **Charlie Rose**
- Midnight (11:00 MT) **Tavis Smiley**

SDPB2

- 6:00 (5:00 MT) **Lost Child** *Sayon's Journey*
- 7:00 (6:00 MT) **America ReFramed** *Winning Girl*



Photo © iStock.com

Frontline investigates the spread of dangerous pathogens in our meat – particularly poultry – and why the food-safety system isn't stopping the threat in *The Trouble with Chicken*. Focusing on an outbreak of salmonella Heidelberg at one of the nation's largest poultry processors, the film shows how contaminants are evading regulators and causing more severe illnesses at a time when Americans are consuming more chicken than ever.

SDPB1: Tuesday, May 12, 9pm (8 MT)
SDPB2: Wednesday, May 13, 8pm (7 MT)

- 9:00 (8:00 MT) **PBS NewsHour**
- 10:00 (9:00 MT) **Nightly Business Report**
- 10:30 (9:30 MT) **Journal**
- 11:00 (10:00 MT) **America ReFramed** *Winning Girl*

WEDNESDAY – MAY 13

SDPB1

- 6:00 (5:00 MT) **PBS NewsHour**
- 7:00 (6:00 MT) **Nature** *Animal Childhood*
- 8:00 (7:00 MT) **NOVA** *Lethal Seas*
- 9:00 (8:00 MT) **Super Skyscrapers** *The Vertical City*
- 10:00 (9:00 MT) **Last of the Summer Wine**
- 10:30 (9:30 MT) **BBC World News**
- 11:00 (10:00 MT) **Charlie Rose**
- Midnight (11:00 MT) **Tavis Smiley**

SDPB2

- 6:00 (5:00 MT) **Among B-Boys**
- 7:00 (6:00 MT) **Independent Lens** *Born to Fly: Elizabeth Streb vs. Gravity*
- 8:00 (7:00 MT) **Frontline** *The Trouble with Chicken*
- 9:00 (8:00 MT) **PBS NewsHour**
- 10:00 (9:00 MT) **Nightly Business Report**
- 10:30 (9:30 MT) **Journal**
- 11:00 (10:00 MT) **Among B-Boys**
- Midnight (11:00 MT) **Independent Lens** *Born to Fly: Elizabeth Streb vs. Gravity*

THURSDAY – MAY 14

SDPB1

- 6:00 (5:00 MT) **PBS NewsHour**
- 7:00 (6:00 MT) **On Call** ▼ *Ask Anything*
- 8:00 (7:00 MT) **South Dakota Focus** ▼ *Rural Economic Growth*
- 9:00 (8:00 MT) **Father Brown** A new British mystery series featuring a crime-solving priest.
- 9:54 (8:54 MT) **Star Gazers**
- 10:00 (9:00 MT) **As Time Goes By**
- 10:30 (9:30 MT) **BBC World News**
- 11:00 (10:00 MT) **Charlie Rose**
- Midnight (11:00 MT) **Tavis Smiley**



Photo: Andy Rouse/naturepl.com

In every animal's life, there comes a time when it must stand on its own and face the world alone. For a few, this happens just moments after birth, with no life lessons from parents to help them. Others have the advantage of home schooling under the watchful eye of a mentor or family member. But growing up is never easy. Join **Nature** for *Animal Childhood*.

SDPB1: Wednesday, May 13, 7pm (6 MT)
SDPB2: Sunday, May 17, 7 & 11pm (6 & 10 MT)



Photo: Buddy Squires

Delve into the rich, 75-year history of one of the world's preeminent ballet companies. Ric Burns' documentary – **American Masters American Ballet Theatre: A History** – combines intimate rehearsal footage, virtuoso performances and interviews with American Ballet Theatre's key figures.
SDPB1: Friday, May 15, 9pm (8 MT)

(May 14, continued)

SDPB2

- 6:00 (5:00 MT) **NOVA Lethal Seas**
- 7:00 (6:00 MT) **Operation Maneater Polar Bear**
- 8:00 (7:00 MT) **Secrets of the Dead**
Resurrecting Richard III
- 9:00 (8:00 MT) **PBS NewsHour**
- 10:00 (9:00 MT) **Nightly Business Report**
- 10:30 (9:30 MT) **Journal**
- 11:00 (10:00 MT) **NOVA Lethal Seas**
- Midnight (11:00 MT) **Operation Maneater Polar Bear**

FRIDAY – MAY 15

SDPB1

- 6:00 (5:00 MT) **PBS NewsHour**
- 7:00 (6:00 MT) **Washington Week**
- 7:30 (6:30 MT) **Charlie Rose The Week**
- 8:00 (7:00 MT) **McLaughlin Group**
- 8:30 (7:30 MT) **Market to Market**
- 9:00 (8:00 MT) **American Masters American Ballet Theatre: A History**
- 10:30 (9:30 MT) **BBC World News**
- 11:00 (10:00 MT) **Charlie Rose**
- Midnight (11:00 MT) **Tavis Smiley**

SDPB2

- 6:00 (5:00 MT) **The Roosevelts: An Intimate History Get Action (1858-1901) Part 1 of 7**
- 8:00 (7:00 MT) **Soul of a Banquet**
- 9:00 (8:00 MT) **PBS NewsHour**
- 10:00 (9:00 MT) **Nightly Business Report**
- 10:30 (9:30 MT) **Journal**
- 11:00 (10:00 MT) **Roosevelts: An Intimate History Get Action (1858-1901) Part 1 of 7**

SATURDAY – MAY 16

SDPB1

- 6:00 (5:00 MT) **Lawrence Welk**
- 7:00 (6:00 MT) **Father Brown** A new British mystery series featuring a crime-solving priest.
- 8:00 (7:00 MT) **Keeping Up Appearances**
- 8:30 (7:30 MT) **As Time Goes By**
- 9:00 (8:00 MT) **Last of the Summer Wine**
- 9:30 (8:30 MT) **Red Green Show**
- 9:54 (8:54 MT) **Star Gazers**
- 10:00 (9:00 MT) **No Cover, No Minimum** ▼
Gordy Pratt
- 11:00 (10:00 MT) **Austin City Limits Bon Iver**

SDPB2

- 1:00 (Noon MT) **The Roosevelts: An Intimate History Get Action (1858-1901) Part 1 of 7**
- 3:00 (2:00 MT) **Soul of a Banquet**
- 4:00 (3:00 MT) **To the Contrary**
- 4:30 (3:30 MT) **Washington Week**
- 5:00 (4:00 MT) **PBS NewsHour Weekend**
- 5:30 (4:30 MT) **Charlie Rose The Week**
- 6:00 (5:00 MT) **Focus on Europe**
- 6:30 (5:30 MT) **Global 3000**
- 7:00 (6:00 MT) **Eisenhower's Secret War**
From Warrior to President/ Building Weapons, Talking Peace
- 9:00 (8:00 MT) **America ReFramed Winning Girl**
- 11:00 (10:00 MT) **Eisenhower's Secret War**
From Warrior to President/ Building Weapons, Talking Peace

SUNDAY – MAY 17

SDPB1

- 1:00 (Noon MT) **South Dakota Focus** ▼ *Rural Economic Growth*

- 2:00 (1:00 MT) **Homecoming** *The Impact on our Veterans*
- 2:30 (1:30 MT) **Into Harm's Way**
- 4:00 (3:00 MT) **Rick Steves' Europe**
- 4:30 (3:30 MT) **Nature Adventures** ▼
Conservation Angels
- 5:00 (4:00 MT) **Antiques Roadshow**
Charleston I
- 6:00 (5:00 MT) **Lawrence Welk**
- 7:00 (6:00 MT) **Call the Midwife** Season 4, Part 8 of 8
- 8:05 (7:05 MT) **Masterpiece Classic** *Mr. Selfridge* Season 3, Part 8 of 8
- 10:03 (9:03 MT) **Above and Beyond**
- 11:02 (10:02 MT) **Globe Trekker Tough Trains:**
Siberia
- Midnight (11:00 MT) **Washington Week**

SDPB2

- 4:00 (3:00 MT) **Temples of Justice** ▼
- 5:00 (4:00 MT) **PBS NewsHour Weekend**
- 5:30 (4:30 MT) **Dakota Life** ▼
- 6:00 (5:00 MT) **Great Conversations** *David Boies and Jeffrey Toobin*
- 7:00 (6:00 MT) **Nature Animal Childhood**
- 8:00 (7:00 MT) **Standing on Sacred Ground**
Pilgrims & Tourists
- 9:00 (8:00 MT) **The Grace Lee Project**
- 10:30 (9:30 MT) **Forsaken Fields**
- 11:00 (10:00 MT) **Nature Animal Childhood**
- Midnight (11:00 MT) **Standing on Sacred Ground** *Pilgrims & Tourists*

MONDAY – MAY 18

SDPB1

- 6:00 (5:00 MT) **PBS NewsHour**
 - 7:00 (6:00 MT) **Antiques Roadshow**
Charleston II / Washington, DC II
- (continued on page 14)



The U.S. Army Herald Trumpets will be part of the **National Memorial Day Concert**.

Courage and Sacrifice

Memorial Day Specials Honor Those in Service

Memorial Day, May 25, is a day for Americans to remember and honor those who have served our country in the Armed Forces.

The 26th annual **National Memorial Day Concert** marks the holiday with music, remembrances and more – live on Sunday, May 24, at 7pm (6 MT), with an encore at 8:30pm (7:30 MT).

The annual concert pays tribute to the service and sacrifice of our men and women in uniform, their families at home and all those who have given their lives for our country. Joe Mantegna and Gary Sinise co-host the 26th annual broadcast of this night of remembrance that airs live from the West Lawn of the U.S. Capitol before an audience of hundreds of thousands, millions at home and to our troops around the world via American Forces Network.

SDPB Radio will look at the legalities of our present conflicts with an **Intelligence Squared** debate – *Has the President Exceeded His Authority by Waging War without Congress?* – on Monday, May 25, at Noon (11 MT).

Specials coming up on SDPB1 Television include:

Sunday, May 17

2:00 (1:00 MT) **Homecoming** *The Impact on our Veterans* How vets cope with returning from war.

2:30 (1:30 MT) **Into Harm's Way** Vietnam's effect on one West Point class.

Friday, May 22

9:00 (8:00 MT) **Lincoln Awards** *A Concert for Veterans & the Military Family*

Sunday, May 24

7:00 (6:00 MT) **National Memorial Day Concert**

8:30 (7:30 MT) **National Memorial Day Concert**

10:00 (9:00 MT) **Omaha Beach** *Honor and Sacrifice*

Monday, May 25

8:00 (7:00 MT) **Homefront** A look inside the challenges faced by America's military families.



A Color Guard featuring all the services is part of the annual concert.



Joe Mantegna and Gary Sinise host the concert.

Experience Incredible Theatre
in a Stunning Setting



SEASON WARMERS

Tatanka Teaser • May 31

A Couple of Blaguards • June 3-7

To Kill A Mockingbird

Classic Drama • June 12-28

She Loves Me

Romantic Musical • July 3-19

Shrek the Musical

Must-See Musical • July 24-August 9

Moonlight & Magnolias

Dynamic Comedy • August 14-23



**CONTACT THE BOX OFFICE TO
PURCHASE TICKETS**

605-255-4141 • 855-584-4141

tickets@blackhillspayhouse.com

www.blackhillspayhouse.com

Get \$3.00 off individual
tickets using code
SDPBMAG15

(cannot be combined with other discounts)

Buffalo Pass Sale
(4 discounted flex tickets)
ends June 7

(May 18, continued from page 11)
9:00 (8:00 MT) **Independent Lens 1971**
10:30 (9:30 MT) **BBC World News**
11:00 (10:00 MT) **Charlie Rose**
Midnight (11:00 MT) **Tavis Smiley**

SDPB2

6:00 (5:00 MT) **Pacific Heartbeat Papa Mau: The Wayfinder/ There Once was an Island – Te Henua e Nnoho**
8:00 (7:00 MT) **Local USA Caring at the End**
8:30 (7:30 MT) **Film School Shorts Separation Anxiety**
9:00 (8:00 MT) **PBS NewsHour**
10:00 (9:00 MT) **Nightly Business Report**
10:30 (9:30 MT) **Journal**
11:00 (10:00 MT) **Pacific Heartbeat Papa Mau: The Wayfinder/ There Once was an Island – Te Henua e Nnoho**

TUESDAY – MAY 19

SDPB1

6:00 (5:00 MT) **PBS NewsHour**
7:00 (6:00 MT) **The Roosevelts: An Intimate History The Fire of Life (1910-1919) Part 3 of 7**
9:00 (8:00 MT) **Frontline Secrets, Politics and Torture**
10:00 (9:00 MT) **Keeping Up Appearances**
10:30 (9:30 MT) **BBC World News**
11:00 (10:00 MT) **Charlie Rose**
Midnight (11:00 MT) **Tavis Smiley**

SDPB2

7:00 (6:00 MT) **America ReFramed**
9:00 (8:00 MT) **PBS NewsHour**
10:00 (9:00 MT) **Nightly Business Report**
10:30 (9:30 MT) **Journal**
11:00 (10:00 MT) **America ReFramed**

WEDNESDAY – MAY 20

SDPB1

6:00 (5:00 MT) **PBS NewsHour**
7:00 (6:00 MT) **Nature The Sagebrush Sea**
8:00 (7:00 MT) **NOVA Rise of the Hackers**
9:00 (8:00 MT) **Super Skyscrapers Billionaire Building**
10:00 (9:00 MT) **Last of the Summer Wine**
10:30 (9:30 MT) **BBC World News**
11:00 (10:00 MT) **Charlie Rose**
Midnight (11:00 MT) **Tavis Smiley**

SDPB2

6:00 (5:00 MT) **Our American Family: The Furutas**
6:30 (5:30 MT) **Independent Lens 1971**
8:00 (7:00 MT) **Frontline Secrets, Politics and Torture**
9:00 (8:00 MT) **PBS NewsHour**
10:00 (9:00 MT) **Nightly Business Report**
10:30 (9:30 MT) **Journal**
11:00 (10:00 MT) **Our American Family: The Furutas**
Midnight (11:00 MT) **Independent Lens 1971**

THURSDAY – MAY 21

SDPB1

6:00 (5:00 MT) **PBS NewsHour**
7:00 (6:00 MT) **On Call** ▼ *Supplements: Facts and Fictions*
8:00 (7:00 MT) **South Dakota Focus** ▼ *Elderly Healthcare*
9:00 (8:00 MT) **Father Brown**
9:54 (8:54 MT) **Star Gazers**
10:00 (9:00 MT) **As Time Goes By**
10:30 (9:30 MT) **BBC World News**
11:00 (10:00 MT) **Charlie Rose**
Midnight (11:00 MT) **Tavis Smiley**

SDPB2

6:00 (5:00 MT) **NOVA Rise of the Hackers**
7:00 (6:00 MT) **Operation Maneater Crocodile**
8:00 (7:00 MT) **Angle of Attack Part 1 of 2**
9:00 (8:00 MT) **PBS NewsHour**
10:00 (9:00 MT) **Nightly Business Report**
10:30 (9:30 MT) **Journal**
11:00 (10:00 MT) **NOVA Rise of the Hackers**
Midnight (11:00 MT) **Operation Maneater Crocodile**

FRIDAY – MAY 22

SDPB1

6:00 (5:00 MT) **PBS NewsHour**
7:00 (6:00 MT) **Washington Week**
7:30 (6:30 MT) **Charlie Rose The Week**
8:00 (7:00 MT) **McLaughlin Group**
8:30 (7:30 MT) **Market to Market**
9:00 (8:00 MT) **Lincoln Awards A Concert for Veterans & the Military Family**
10:00 (9:00 MT) **Night of the Proms**
10:30 (9:30 MT) **BBC World News**
11:00 (10:00 MT) **Charlie Rose**
Midnight (11:00 MT) **Tavis Smiley**

SDPB2

6:00 (5:00 MT) **The Roosevelts: An Intimate History In the Arena (1901-1910) Part 2 of 7**
8:00 (7:00 MT) **Mulberry Child**
9:00 (8:00 MT) **PBS NewsHour**
10:00 (9:00 MT) **Nightly Business Report**
10:30 (9:30 MT) **Journal**
11:00 (10:00 MT) **The Roosevelts: An Intimate History In the Arena (1901-1910)**

SATURDAY – MAY 23

SDPB1

6:00 (5:00 MT) **Lawrence Welk**
7:00 (6:00 MT) **Father Brown**
8:00 (7:00 MT) **South Dakota High School All-State Jazz Band** ▼
10:00 (9:00 MT) **No Cover, No Minimum** ▼ *Josh Hoyer and The Shadowboxers*
11:00 (10:00 MT) **Austin City Limits The Lumineers/ Shovels & Rope**

SDPB2

1:00 (Noon MT) **The Roosevelts: An Intimate History In the Arena (1901-1910) Part 2 of 7**
3:00 (2:00 MT) **Mulberry Child**
4:00 (3:00 MT) **To the Contrary**
4:30 (3:30 MT) **Washington Week**
5:00 (4:00 MT) **PBS NewsHour Weekend**
5:30 (4:30 MT) **Charlie Rose The Week**
6:00 (5:00 MT) **Focus on Europe**
6:30 (5:30 MT) **Global 3000**
7:00 (6:00 MT) **Above and Beyond**
8:00 (7:00 MT) **Omaha Beach Honor and Sacrifice**
9:00 (8:00 MT) **America ReFramed**
11:00 (10:00 MT) **Above and Beyond**

SUNDAY – MAY 24

SDPB1

1:00 (Noon MT) **South Dakota Focus** ▼ *Elderly Healthcare*
2:00 (1:00 MT) **South Dakota High School All-State Band** ▼
4:00 (3:00 MT) **Rick Steves' Europe**
4:30 (3:30 MT) **Nature Adventures** ▼ *All Creatures Great and Small*
5:00 (4:00 MT) **Antiques Roadshow Charlestown II**
6:00 (5:00 MT) **Lawrence Welk**
7:00 (6:00 MT) **National Memorial Day Concert**
8:30 (7:30 MT) **National Memorial Day Concert**
10:00 (9:00 MT) **Omaha Beach Honor and Sacrifice**
11:00 (10:00 MT) **Globe Trekker Food Hour: Deep South USA**
Midnight (11:00 MT) **Washington Week**

SDPB2

4:00 (3:00 MT) **Light of the Prairie** ▼ *Stained Glass in South Dakota*
5:00 (4:00 MT) **PBS NewsHour Weekend**
5:30 (4:30 MT) **Dakota Life** ▼
6:00 (5:00 MT) **Great Conversations Congressman John Lewis**
7:00 (6:00 MT) **Nature The Sagebrush Sea**
8:00 (7:00 MT) **Standing on Sacred Ground Profit & Loss**
9:00 (8:00 MT) **Global Voices Oil & Water**
10:00 (9:00 MT) **Memory of a Forgotten War**
10:30 (9:30 MT) **Four-Four-Two, F Company at War**



Join some of the state's most talented instrumentalists as SDPB Television presents the 2015 **South Dakota High School All-State Jazz Band** performances. A big band and various combos come together to create a first-class concert.
SDPB1: Saturday, May 23, 8pm (7 MT)

(May 24, continued)

11:00 (10:00 MT) **Nature** *The Sagebrush Sea*
Midnight (11:00 MT) **Standing on Sacred Ground** *Profit & Loss*

MONDAY – MAY 25

SDPB1

6:00 (5:00 MT) **PBS NewsHour**
7:00 (6:00 MT) **Antiques Roadshow**
Charleston III
8:00 (7:00 MT) **Homefront**
10:00 (9:00 MT) **Red Green Show**
10:24 (9:24 MT) **Star Gazers**
10:30 (9:30 MT) **BBC World News**
11:00 (10:00 MT) **Charlie Rose**
Midnight (11:00 MT) **Tavis Smiley**

SDPB2

6:00 (5:00 MT) **Homes on the Range** *The New Pioneers*
7:00 (6:00 MT) **Caring for Mom & Dad**
8:00 (7:00 MT) **Local USA** *Harnessing the Sun*
8:30 (7:30 MT) **Film School Shorts** *On the Prowl*
9:00 (8:00 MT) **PBS NewsHour**
10:00 (9:00 MT) **Nightly Business Report**
10:30 (9:30 MT) **Journal**
11:00 (10:00 MT) **Homes on the Range** *The New Pioneers*
Midnight (11:00 MT) **Caring for Mom & Dad**

TUESDAY – MAY 26

SDPB1

6:00 (5:00 MT) **PBS NewsHour**
7:00 (6:00 MT) **The Roosevelts: The Storm**
(1920-1933) Part 4 of 7
9:00 (8:00 MT) **Frontline** *Obama at War*
10:00 (9:00 MT) **Keeping Up Appearances**
10:30 (9:30 MT) **BBC World News**
11:00 (10:00 MT) **Charlie Rose**
Midnight (11:00 MT) **Tavis Smiley**

SDPB2

6:00 (5:00 MT) **Long Road Home**
7:00 (6:00 MT) **America ReFramed** *Endless Abilities*
9:00 (8:00 MT) **PBS NewsHour**
10:00 (9:00 MT) **Nightly Business Report**
10:30 (9:30 MT) **Journal**
11:00 (10:00 MT) **America ReFramed** *Endless Abilities*

WEDNESDAY – MAY 27

SDPB1

6:00 (5:00 MT) **PBS NewsHour**
7:00 (6:00 MT) **Nature** *My Bionic Pet*
8:00 (7:00 MT) **NOVA** *First Man on the Moon*
9:00 (8:00 MT) **Secrets of the Dead** *The Man who Saved the World*
10:00 (9:00 MT) **Last of the Summer Wine**
10:30 (9:30 MT) **BBC World News**
11:00 (10:00 MT) **Charlie Rose**
Midnight (11:00 MT) **Tavis Smiley**

SDPB2

6:00 (5:00 MT) **Homefront**
8:00 (7:00 MT) **Frontline** *Obama at War*
9:00 (8:00 MT) **PBS NewsHour**
10:00 (9:00 MT) **Nightly Business Report**
10:30 (9:30 MT) **Journal**
11:00 (10:00 MT) **Homefront**

THURSDAY – MAY 28

SDPB1

6:00 (5:00 MT) **PBS NewsHour**



Four young Canadians bring a new look to music in **The Tenors Under One Sky**. Their latest presentation combines pop and classical crossover songs like “Lean on Me,” “You Are So Beautiful” and “Besame Mucho” plus original songs.

SDPB1: Sunday, May 31, 11pm (10 MT)

7:00 (6:00 MT) **On Call** *A Non-Political Look at the A.C.A.*

8:00 (7:00 MT) **South Dakota Focus** *▼*

9:00 (8:00 MT) **Father Brown**

9:54 (8:54 MT) **Star Gazers**

10:00 (9:00 MT) **As Time Goes By**

10:30 (9:30 MT) **BBC World News**

11:00 (10:00 MT) **Charlie Rose**

Midnight (11:00 MT) **Tavis Smiley**

SDPB2

6:00 (5:00 MT) **NOVA** *First Man on the Moon*

7:00 (6:00 MT) **Pioneers in Aviation: The Race to the Moon**

8:00 (7:00 MT) **Angle of Attack** Part 2 of 2

9:00 (8:00 MT) **PBS NewsHour**

10:00 (9:00 MT) **Nightly Business Report**

10:30 (9:30 MT) **Journal**

11:00 (10:00 MT) **NOVA** *First Man on the Moon*

Midnight (11:00 MT) **Pioneers in Aviation: The Race to the Moon**

FRIDAY – MAY 29

SDPB1

6:00 (5:00 MT) **PBS NewsHour**

7:00 (6:00 MT) **Washington Week**

7:30 (6:30 MT) **Charlie Rose** *The Week*

8:00 (7:00 MT) **McLaughlin Group**

8:30 (7:30 MT) **Market to Market**

9:00 (8:00 MT) **Great Performances** *Boston Symphony Orchestra: Andris Nelsons Inaugural Concert*

11:00 (10:00 MT) **Charlie Rose**

Midnight (11:00 MT) **Tavis Smiley**

SDPB2

6:00 (5:00 MT) **The Roosevelts: The Fire of Life** *(1910-1919) Part 3 of 7*

8:00 (7:00 MT) **Passing Poston** *An American Story*

9:00 (8:00 MT) **PBS NewsHour**

10:00 (9:00 MT) **Nightly Business Report**

10:30 (9:30 MT) **Journal**

11:00 (10:00 MT) **The Roosevelts: An Intimate History** *The Fire of Life (1910-1919)*

SATURDAY – MAY 30

SDPB1

10:30am (9:30 MT) **Sewing with Nancy** *Sew Simple with Rectangles and Squares*

Noon (11 MT) **Easy Yoga for Easing Pain**

1pm (Noon MT) **Aging Backwards**

2pm (1 MT) **Dr. Christiane Northrup – Glorious Women Never Age**

3:30 (2:30 MT) **My Yearbook: 1960-1963**

5:00 (4:00 MT) **Sister Acts**

6:30 (5:30 MT) **Lawrence Welk's TV Treasures**

8:30 (7:30 MT) **Country Pop Legends**

10:30 (9:30 MT) **Great Performances** *Annie Lennox*

Midnight (11:00 MT) **Front and Center** *Grouplove*

SDPB2

10:00am (9:00 MT) **South Dakota High School Track and Field Championships** *▼*

5:00pm (4:00 MT) **PBS NewsHour Weekend**

5:30 (4:30 MT) **Charlie Rose** *The Week*

6:00 (5:00 MT) **Focus on Europe**

6:30 (5:30 MT) **Global 3000**

7:00 (6:00 MT) **Company of Heroes**

8:00 (7:00 MT) **Dick Winters** *Hang Tough*

9:00 (8:00 MT) **America ReFramed** *Endless Abilities*

11:00 (10:00 MT) **Company of Heroes**

SUNDAY – MAY 31

SDPB1

9:30am (8:30 MT) **Dr. Wayne Dyer** *I Can See Clearly Now*

12:30 (11:30 MT) **Great Broadway Musical Moments from the Ed Sullivan Show**

2:00 (1:00 MT) **John Denver** *Country Boy*

3:30 (2:30 MT) **Dr. Fuhrman's End Dieting Forever**

5:00 (4:00 MT) **Daniel O'Donnell** *Stand Beside Me*

6:30 (5:30 MT) **Aging Backwards**

7:30 (6:30 MT) **Suze Orman's Financial Solutions for You**

9:30 (8:30 MT) **Celtic Woman Fan Favorites**

11:00 (10:00 MT) **The Tenors Under One Sky**

SDPB2

4:00 (3:00 MT) **Our Statehouse – A Capitol Idea** *▼*

5:00 (4:00 MT) **PBS NewsHour Weekend**

5:30 (4:30 MT) **Dakota Life** *▼*

6:00 (5:00 MT) **Great Conversations** *Ahmed Rashid/ Clarissa Ward*

7:00 (6:00 MT) **Nature** *My Bionic Pet*

8:00 (7:00 MT) **Standing on Sacred Ground** *Fire & Ice*

9:00 (8:00 MT) **Global Voices** *Last Train Home*

10:30 (9:30 MT) **Calling Tokyo**

11:00 (10:00 MT) **Nature** *My Bionic Pet*

Midnight (11:00 MT) **Standing on Sacred Ground** *Fire & Ice*



Come Join the FUN!

Make Memories with a Day of Play at the Children's Museum of South Dakota

Welcoming
soon our
500,000th
Visitor!

Fun for the whole family! The award-winning Children's Museum of South Dakota offers a unique opportunity to truly let your imagination run wild with hands-on, interactive exhibits. Create new experiences with every visit to our 44,000 sq. ft. of space and 4 acres of prairie.

DAILY ADMISSION
\$6/per person. Children under one year old are free.
A 1 to 5 adult to child ratio required.

MUSEUM HOURS
Tues-Sat 10am-5pm; Sun 12-5pm
Closed Mondays



Café Coteau
Refuel with delicious breakfast & lunch meals or snacks, including gluten free items and famous SDSU Ice Cream!

LOCATION
521 4th Street
Downtown Brookings



- Sing.
- Dance.
- Paint.
- Play.
- Learn.
- Splash.
- Create.
- Imagine!



Children's
Museum
of South Dakota

www.PrairiePlay.org



Tune in for Music, Advice and More

Music, lifestyle and financial advice and biography are part of the schedule as SDPB Television begins a week of special programming May 30-June 7. Check the listings for SDPB1 specials on May 30 and 31.

Lifestyle guru **Dr. Wayne Dyer** explains how our experiences and choices weave the tapestry of our lives in *I Can See Clearly Now* (5/31). And investments, retirement, insurance and more are on the menu with **Suze Orman's Financial Solutions for You** (5/31).

The public triumphs and personal tragedies of one of America's most famed singer/songwriters are explored in **John Denver Country Boy** (5/31). Nostalgia reigns as **Lawrence Welk's TV Treasures** collects some of the finest moments from 50 years of performances (5/30).

The week of special programming includes musical journeys into the past with **My Yearbook: 1960-1963**, **Sister Acts** and **Country Pop Legends** (all 5/30). Plus some



Photo: The Welk Group

The maestro himself – Lawrence Welk – takes a turn behind the camera.

contemporary favorites perform in **Daniel O'Donnell Stand Beside Me** and **Celtic Woman Fan Favorites** (both 5/31).

These specials and more, plus the regular programming you see every

day on SDPB Television, are brought to you, courtesy of you. Your support makes public broadcasting possible. Thank you.



Photo: John Denver Estate

Singer/songwriter John Denver experienced triumph and challenge in his life.

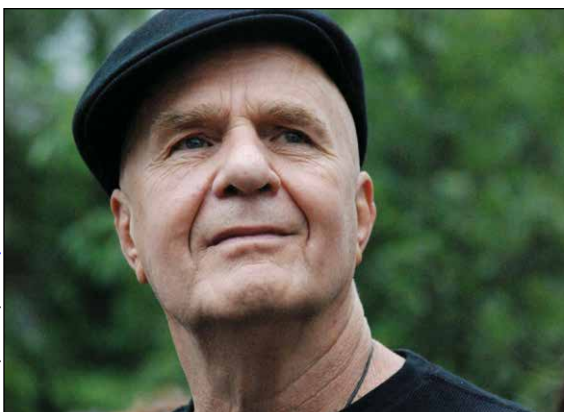


Photo: My Life Italy www.MyLife.it

Dr. Wayne Dyer offers his guidance on seeing our life path.

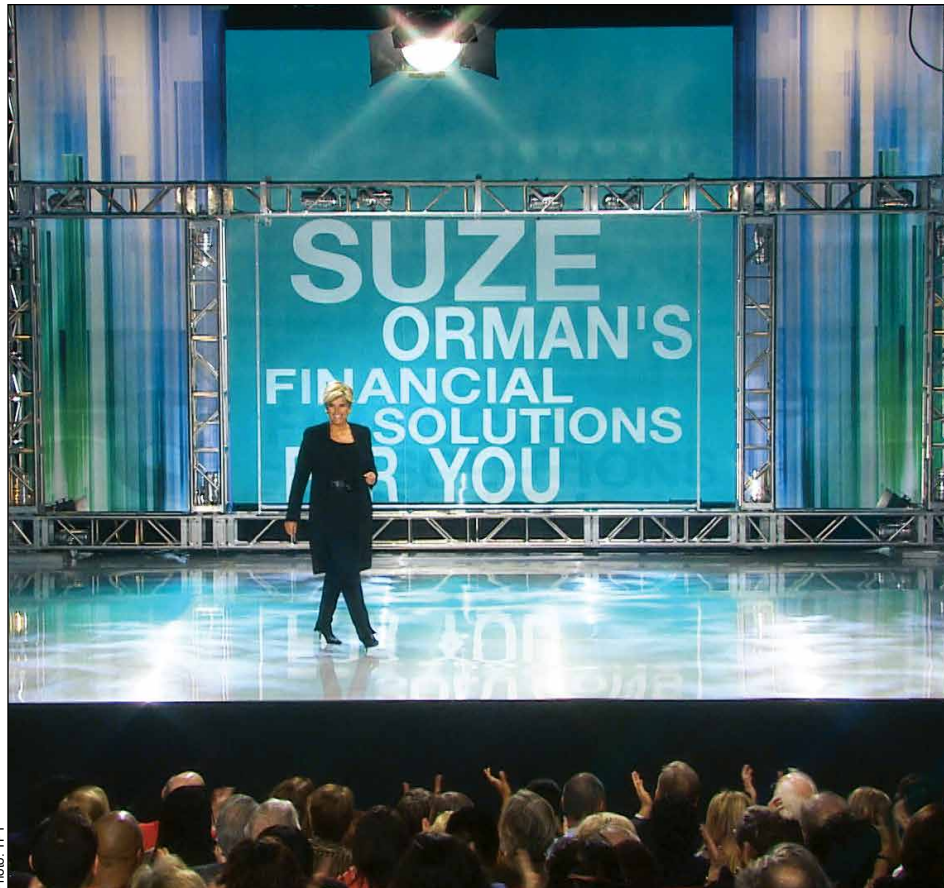


Photo: TPT

Financial adviser Suze Orman offers tips and advice.



Photo: Kelly Preheim

Lake Andes is a great place for bald eagle-watching.

Exploring Eagles, Asian Carp, Craft Brews

Dakota Life takes us to one of the best spots in the state for eagle watching, examines the challenges caused by an invasive species in our waterways, and finds that the beer brewing business in South Dakota is hopping.

The May episode premieres on SDPB1 Thursday, May 7, at 8pm (7 MT), with an encore on Sunday, May 10, at 1pm (Noon MT).

The monthly half-hour program, the signature features magazine for SDPB Television, looks at the fascinating people, places and things that make up our great state. Here are some of the highlights for May:

- **Eagle Watching** – Our national bird is a common sight along the Missouri River and other waterways throughout South Dakota, but the Lake Andes National Wildlife Refuge may be one of the best spots in the state for eagle watching.

- **Fishing for Trouble** – Fishing is one of South Dakota’s most treasured outdoor activities. However in recent years boaters and anglers in the rivers of southeastern South Dakota are learning that “defensive driving” may be a required skill when navigating the waterways. Asian carp are expanding their territory, making it dangerous for boaters.
- **Beer Business** – South Dakota brewers are taking advantage of a strong and growing thirst for hand-crafted beer. Craft brewing ranges from the smallest of hobby operations to the largest commercial brewery in the state.

Dakota Life airs several times during the month to give viewers a chance to tune in. Past episodes are available at SDPB.org/DakotaLife. The program airs statewide on SDPB and nationwide on RFD-TV.



Craft brews range from commercial (above) to small home operations.

Concert Takes Students on Journey in Space

The South Dakota Symphony Orchestra and Music Director Delta David Gier unravel the meaning of classical music each year in the **South Dakota Symphony Orchestra’s Young People’s Concert**. This year’s concert, airing on SDPB1 Television on Sunday, May 3, at 2pm (1 MT), features portions of Holst’s “The Planets.”

Classical music tells a story, but sometimes the nuances are not clear to novice listeners. The lesson on “The Planets” includes some fanciful views of various planets in the solar system, developed to match the music by visual artist Adrian Wyard. In addition, Gier helps the audience see how the music matches the ancient personnas of the planets.

Three concerts in a single day were presented live for 5,158 elementary-school-aged students and chaperones, with 88 regional schools represented. Via SDPB Television, the educational concert reaches a statewide audience. The concerts were recorded on March 30 at the Washington Pavilion in Sioux Falls.



A fanciful view of our solar system accompanied Holst’s “The Planets.”



Delta David Gier asks audience members about their take on the music.

Photos: SDSCO

RADIO	WEEKDAYS	SATURDAYS	SUNDAYS	
5am / 4 MT	Morning Edition NPR news. Star Date 9am (8 MT)	BBC World Service Overnight.	BBC World Service Overnight.	
5:30/4:30 MT		The People's Pharmacy Health news & alternatives.	TED Radio Hour Ideas, inventions and original thinking.	
6am / 5 MT		Weekend Edition News and features from NPR.	Weekend Edition News and features from NPR.	
6:30/5:30 MT				
7am / 6 MT		Morning Classics with Owen DeJong ▼ "South Dakota Season Ticket" w/ local performance on Wed. "Request Day" on Fridays.	The Best of Car Talk Real advice, zany hosts.	Krista Tippett on Being Philosophical discussions.
7:30/6:30 MT			Wait, Wait ... Don't Tell Me Trivia, humor from week's news.	Travel with Rick Steves America's top travel expert.
8am / 7 MT			Radiolab Science and life.	America's Test Kitchen Recipes, tips, and information.
8:30/7:30 MT			This American Life Portraits of all kinds of Americans.	A Prairie Home Companion Garrison Keillor with music, humor, skits and more.
9am / 8 MT	Here & Now , Mondays-Thursdays News, features, conversations and more from NPR.		TED Radio Hour Ideas, inventions and original thinking.	SymphonyCast Top orchestras.
9:30/8:30 MT		Wits America's best contemporary music and comedy.		
10am / 9 MT	Science Friday on Fridays.	The Dinner Party Download Pop culture, food & conversation.	All Things Considered NPR	
10:30/9:30 MT				
11am / 10 MT	PRI's The World Global news.	All Things Considered NPR	All Things Considered NPR	
11:30/10:30MT				
Noon / 11 MT	All Things Considered NPR National Native News 4:30 (3:30 MT)	A Prairie Home Companion Garrison Keillor with music, humor, skits and more.	On the Media News analysis and journalistic journeys.	
12:30/11:30MT			This American Life Portraits of all kinds of Americans.	
1pm / Noon MT	Marketplace	American Routes Roots music, stories behind sounds/ artists.	Ask Me Another Test your wits in this lively quiz show.	
1:30/12:30 MT			Rock Garden Tour ▼ Last Sat. of month, 8pm (7 MT)	
2pm / 1 MT	Jazz Nightly with Jim Clark ▼ "Uncle Jimmo" features jazz artists & styles, as well as South Dakota Jazz Stars.	On Record with Matt Weesner ▼ Adult alternative music.	Big Band Spotlight with Karl Gehrke ▼ Music of '30s & '40s.	
2:30/1:30 MT			Jazz Night in America	
3pm / 2 MT		No Cover, No Minimum Radio ▼ South Dakota performance.	Selected Shorts Readings of fiction by top actors.	
3:30/2:30 MT			The Moth Radio Hour Compelling real-life stories.	
4pm / 3 MT			Fresh Air Weekend Best features from the week.	
4:30/3:30 MT	World Café Music from around the globe.	Blue Dimensions Blues music & artists explored.	BBC World Service Overnight.	
5pm / 4 MT			BBC World Service Overnight.	
5:30/4:30 MT	BBC World Service Overnight	BBC World Service Overnight.	BBC World Service Overnight.	
6pm / 5 MT				

SDPB Radio Program Features Dan O'Brien Book

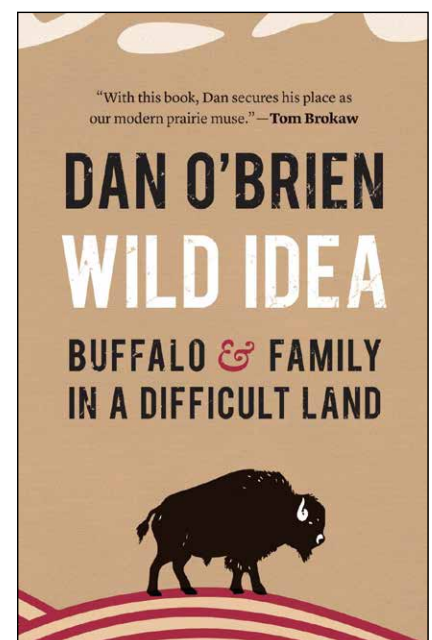
SDPB.org/BookClub

SDPB Radio's **Dakota Midday Book Club** recently featured author, rancher and environmentalist Dan O'Brien. The interview, planned for April 30, featured O'Brien's book **Wild Idea: Buffalo and Family in a Difficult Land**. **Wild Idea** is O'Brien's account of efforts to raise buffalo with dignity and respect as a sustainable enterprise. It's also a love story – of family and friends and the often-harsh landscape of western South Dakota. O'Brien is a South Dakota writer, wildlife biologist, falconer and buffalo rancher.

The **Dakota Midday Book Club** is open to Friends of SDPB supporters

who donate \$300 annually, or \$25 per month. When you choose the book club as your thank you gift, you receive four books over the course of a year. You can even become an Evergreen Member, with automatic monthly donations, and be a member. Go to SDPB.org/BookClub or call 800-333-0789 to join and to access the interview with O'Brien.

Four times a year, SDPB Radio's **Dakota Midday** Host Karl Gehrke features a regional author and/or story during the one-hour program, which airs on SDPB Radio on weekdays at Noon (11 MT).



Thank You for Your Memorial Gifts to Friends of SDPB

Friends of SDPB has received several memorial gifts honoring the life of Matilda "Mimi" Damba. Thank You.

Memorials include one from Karla Damba in memory of her mother, as well as gifts from:

Richard & Rayola Anderson, Black Hawk; Toni & Dennis Beeson, Rapid City; Raymond Damba, Box Elder; Gary & Barb Fish, Brandon; Bryce & Mary Vee Knauer, Rapid City; Ervin & Rita Read, Rapid City; and Robert & Linda Schaffner, Sturgis.

Other memorials include a gift from Jo Young of Rapid City in honor of Martin Busch, the former Executive Director of SDPB.

Dorothy Schmidt of Yankton presented a gift in memory of J.P. Schmidt.

A donor also made a gift in memory of Lewis Gomer of Maple Grove, Minn.

A gift was received to honor the memory of Rachel Westgaard of Clear Lake.

Carol Johnson of Watertown offered a donation in honor of Ruth Olson Aldridge.

Marlys Schmitz of Aberdeen honored the memory of Jerome Schmitz with a gift.

Karen and Darrel Westerman of Chancellor remembered Ed Griffin with a memorial donation.

The Friends of SDPB is grateful for these gifts.

Donors may make memorial gifts or gifts to honor a special person or occasion.

Memorial gifts may be made by calling 800-333-0789 or may be mailed to Friends of SDPB, P.O. Box 5000, Brookings, SD, 57006.



Huron Teacher Earns PBS Honor

SDPB is pleased to announce that teacher Lori Keleher of Huron has been selected as one of 100 educators nationwide to join the 2015 PBS LearningMedia Digital Innovators program. The program, which is in its third year, recognizes tech-savvy K-12 educators who are serving as leaders in using educational technology and using digital media in classrooms.

"I know it will be great!" Keleher said. "PBS LearningMedia resources are some of the best out there."

Keleher is a geometry and earth science teacher at Huron High School. She is also an instructor for the DIAL (Dakota Interactive Academic Link) Virtual High School. As South Dakota's first National Board Certified Teacher in the area of adolescent and young adulthood mathematics, Keleher mentors fellow teachers. She says the best part of her job is the 1-to-1 iPad initiative at her high school and finding apps to help her students achieve.

According to the PBS program, "Keleher stood out from the crowd as an educator who is not only embracing digital media in the classroom, but truly paving the way in innovation and creative thinking."



Lori Keleher

In 2009, she earned a Presidential Award for Excellence in Mathematics and Science Teaching.

The 2015 PBS LearningMedia Digital Innovators will receive year-long professional development opportunities that include virtual training, access to exclusive PBS resources, invitations to special events, and more.

SDPB Governing Boards Meeting in May

The SDPB governing boards meet on Friday, May 1, in Chamberlain at the Cedar Shore Resort.

Friends of SDPB, the network's fundraising and advocacy arm, will meet at 11am. For more information

call 1-800-333-0789.

The network's governing board, the South Dakota Board of Directors for Educational Telecommunications, will meet at 2pm. For more information call 1-800-456-0766.

Board meetings are open to the public.

The Visionary Society

The SDPB Visionary Society offers annual donors of \$1,000 or more unique opportunities and a leadership role in supporting South Dakota's network: SDPB.

Cornerstone Club

(contributors of \$25,000 or more)

Brookings

Van D. & Barbara B. Fishback

Pierre

South Dakota Department of Tourism

Washington, D.C.

Corporation for Public Broadcasting

Broadcast Club

(contributors of \$10,000 to \$24,999)

Pierre

South Dakota Arts Council

South Dakota Bar Foundation

Rapid City

John T. Vucurevich Foundation

Tower Club

(contributors of \$5,000 to \$9,999)

Aberdeen

Northern State University

Brookings

South Dakota Humanities Council

Huron

Nordby Family Foundation

Sioux Falls

Dakota Sky

Harold's Photo Experts

Rapid City

Anonymous (1)

Tyndall

Hoch Drug Foundation

San Mateo, CA

Lawrence Bowman

Family Foundation

Spotlight Club

(contributors of \$2,500 to \$4,999)

Aberdeen

Sisters of Presentation

Brookings

Anonymous (1)

Rapid City

Jason & Betsy Groves

Sandra J. Honke, MD

Michelle Lamberty

Shirley Sackman

Roscoe

John R. Beyers, LaVerna Fenner

& Alan Stuckle

Sioux Falls

Mary McQuillen

Spearfish

Mike & Liz Manning

Washington, D.C.

WETA

Naples, FL

Anonymous (1)

Executive Producers

(contributors of \$1,000 to \$2,499)

Aberdeen

Limerick Lounge

Gail Malsom

Drs. James Smith & Connie Ruhl-

Smith

Anonymous (1)

Avon

Rev. Daniel F. Brandt

Bath

Jan & Gordon Locken

Beresford

Gini Finger

Bobbie J. Gudmestad-Maher

Brandon

Barbara Lynch

Brookings

Lyle Bowes

David & Marcia Chicoine

Sally Damm

Don & Carol Evenson

Joanie & Rick Holm

Mildred K. Huggins

Tom & Jeanne Manzer

Harvey & Midge Mills

James & Dorothy Morgan

Bernadette & Stewart Olson

Duane & Phyllis Sander

Richard & LaRayne Wahlstrom

Cancellor

Chuck & Marcia Hendrickson

Custer

Wanda & Jon Dahlstrom

Elnor Hartpence Estate

Deadwood

Peggy Norris

Florence

Ms. Victoria Kingslien

Fort Pierre

Wayne & Carol Carney

Mortenson Law Offices

Groton

Dick Ruden

Anonymous (1)

Hartford

Kay Bahnson

Hermosa

Anonymous (1)

Hill City

1880 Train

Hot Springs

Glen & Deanne Reaser

Howard

Vincent & Mary Protsch

Norman Andenas & Cecelia

Wittmayer

Huron

Jeanne L. Bauder

Marilyn J. Hoyt

Lake Preston

Christena Beck

Lead

Dan Leikvold

Lily

Barb & Frank James

Milbank

Max Gonzenbach

Tom Pagel

Mitchell

Gladys Baldwin, Baldwin Rentals

Norma Cameron

Dale & Marla Holm

Charlyns Randall

Mobridge

Steven Jacobs

Pierre

Ann Fingerson

Cash & Julie R. Hogen

Russell E. Nash

Bob & Carolyn Riter

Tessier Family Foundation, Inc.

Dan & Janelle Toman

Anonymous (1)

Presho

Yvonne Taylor

Rapid City

Duane & Karen Abata

James Anderson & Steve Fossum

Dr. & Mrs. John Barlow

David & Mary Boyer

Ruth Brennan

Harry & Barbara Christianson

Fredric R. & Luella Cozad

Mike & Kathy DeMersseman

Randal & Rebecca Fisher

Charles & Kathryn Hart

James & Kathleen Hastings

Dr. Briana & Ron Hill

William Howard

Kamalynn Hurd & family

Dr. Roger & Janice Knutsen

Suzanne Koehler

Drs. Ashok & Kaushalya Kumar

L. B. Lane Family Foundation

Richard & Karen Latchie

Ted & Mary Linda McBride

Liz & Steve McCarthy

Kelli McCormick

Erma Fiedler Mikkelsen

Barry & Kathy Muxen

Joan & Donald Perdue

Gregg Peterman

Perry & Mely Rahn

Susan Rodriguez

Mr. & Mrs. Brian Smith

Jon & Jean Stenberg

Steven & Nancy Stephenson

Dr. Willis & Patricia Sutliff

Brian Tschida

Anonymous (2)

Sioux Falls

Loren & Mavis Amundson

Anesthesiology Associates, Inc.

Jack & Linda Barker

Dr. James Barker

Donna Bauer

Greg Blomberg

Richard Blundell

Lilo Bucknell

Eleanor & Henry Carlson

Joan & Phil Clark

Paul & Mary Ellen Connelly

Don & Jo Dougherty

Bill & Rosemary Draeger

Larry & Suzanne Fuller

Yvette M. Geraets

Emelie Haigh

Susan & Ken Hasseler

Boyd & Dody Hopkins

Ryan & Stacy Howlett

Dorothy L. Johnson

Jerri Johnson & Robert Gripp

Paula Johnson

Dan & Arlene Kirby

De & Dave Knudson

Jason Knudson & Tiffany

Von Wald

David Larsen & Karen Heiling

Michael & Beth MacDonald

David & Linda Marquardt

Nancy McCahren

Judith & Mark Meierhenry

Randy Meister

Gayle & Angie Nelson

Rod & Ruth Parry

Tate Profilet & Mary DeJong

Ruth Schmidt

Karen E. Schreier & Tim

Dougherty

Mark & Peggy Shlanta

Sioux Falls Tower &

Communications

South Dakota Rock 'n' Roll Music

Association

Cheryl & William Taylor

David & Mary Tidwell

Anonymous (4)

Sisseton

Marlin & Cheryl Jenner

Anonymous (1)

Spearfish

Greg & Ellie Cooch

Gene & Yvonne Ficek

Robert & Linda Meyer

Jo Nugent

Howard Owens

Sue White & Larry Landis

Leonard Wormstadt Memorial

Sturgis

Dr. Carl Johnson

Tea

Loren & Julie Overgaard

Tyndall

Steve & Brenda Koenig

Utica

Myles & Valary Tieszen

Vermillion

James W. & Collette Abbott

Tim. P & Barbara Johnson

Dr. Elizabeth R. Moore, Westin

and Weber

Ted & Karen Muenster

Tim, Ilmira & Kamil Schorn

Gary & Jan Small

Julie Stewart & Kevin Bliss

Douglas & Susan Tuve

Anonymous (1)

Viborg

Sorlien Electric, Inc.

Watertown

First PREMIER Bank/PREMIER

Bankcard

Brad & Carol Johnson

Jan & Mike Mullin

Waneen Polly

Reliabank Dakota

Webster

Joan S. Trygstad & M. Michael

Carpenter

Wessington Springs

Tom & Kathy Dean

Anonymous (1)

White

Harriet & Harvey Svec

Yankton

Mardell Antes

Benedictine Sisters, Sacred Heart

Monastery

Marv & Karin Ehlers

Nancy & John Sternquist

Norman & Kathleen West

Washington, D.C.

Tom & Linda Daschle

Akron, IA

Mary Lucken

Alta, IA

Ted & Ruth Lindeman

Fairmont, MN

Paul & Kay Schellpeper

Corporate Support *Our corporate partners continue to support the excellent Television and Radio programming you have come to expect and love from SDPB.*

Abourezk Law Firm
Acupuncture 4 Health
All Souls Church
ArtForms Gallery
Arts Rapid City
Associated General Contractors of South Dakota
Augustana College
BankWest
Bartlett & West
Bay Leaf Café, Inc.
Black Hills Area Community Foundation
Black Hills Federal Credit Union
Black Hills Film Festival
Black Hills Knowledge Network
Black Hills Playhouse
Black Hills Regional Eye Institute
Black Hills State University
Black Hills Symphony
Bush Foundation
Capital Services
(The) Center for Western Studies
Children's Museum of South Dakota
Colorado Children's Hospital
CO-OP Architecture
Credit Union Association of the Dakotas
Dacotah Bank
Dakota Plains New Holland
Daktronics
Davenport Evans Lawyers

Deadwood History (Adams Museum & House/Days of '76/Adams Research & Cultural Center)
Delta Dental of South Dakota
DeMersseman Jensen Tellinghuisen & Huffman, LLP
East River Electric Power Cooperative
Emmanuel Episcopal Church
Family Dentistry of Sioux Falls
Farmers Union Insurance Companies
First Bank and Trust
First Dakota National Bank
Fischer, Rounds & Associates
Flooring America
Four Bands Community Fund
Four Seasons Fabric
Gene Hufford Agency
Great Plains Zoo
Chet Groseclose, Prof. LLC
Hill City Arts Council
Hill City Mercantile
Home Federal Bank
Paul Horsted, Dakota Photographic, LLC
Horton Incorporated
Howes Oil
Hy-Vee Food Stores
IFAM Capital
Independent Insurance Agents of SD
Ingalls Homestead
Institute of Lutheran Theology
Interim HealthCare

Jerry Sanftner Insurance
Jolly Lane Greenhouse
Jorgensen Log Homes, Inc.
(The) Journey Museum
Keller Williams Realty – Jeff Nelson
Koch Hazard Architects
Lamps and Shades
Landscape Garden Centers
Mr. James Leach, Attorney at Law
LifeScape
LIW Pageant Society
Madison Farmers Elevator
Mahlander's
McCrary Gardens
Media One Advertising
Midcontinent Communications
Missouri River Energy Services
Mount Marty College
National Shows
Northern State University
NorthWestern Energy
Ophthalmology Associates
Ophthalmology LTD
Orlando Chamber Soloists
POET
Prairie Repertory Theatre
Presentation Sisters of Aberdeen
Puetz Corporation
Quilters Headquarters
Rapid City Arts Council
Rapid City Sculpture Project
Regional Health

Regional Heart Doctors
Reptile Gardens
Sanford Health
SDN Communications
Sioux Falls Area Community Foundation
Sioux Falls Seminary
Siouxland Museums
South Dakota Affiliate of the American College of Nurse Midwives
South Dakota Agricultural Heritage Museum
South Dakota Art Museum
South Dakota Arts Council
South Dakota Bar Foundation
South Dakota Crop Improvement Association
South Dakota Film Festival
South Dakota Humanities Council
South Dakota Magazine
South Dakota Space Grant Consortium
South Dakota Speech-Language-Hearing Association
South Dakota State Historical Society
South Dakota State Quilt Guild
South Dakota State University
South Dakota State University – Woodbine Productions
South Dakota Symphony
South Dakotans for the Arts

Southeastern Dental Center – Dr. Daniel Goede
Spearfish GMC Cadillac
Subway
Sunset Pawn, Inc.
Dr. James Szana
Tabor Czech Days
Taco John's
Touchstone Energy
Turbak Law Office, PC
University of Sioux Falls
University of South Dakota
Valiant Vineyards
Vance Thompson Vision
Viken & Riggins Law Firm
Warne Chemical & Equipment Company
Washington Pavilion
Weigum's Great Plains Landscape Arboretum
West River Dermatology Clinic – Dr. Roger Knutsen
Westhills Village Retirement Community
Wilson, Olson & Nash, PC - Attorneys at Law
Woods, Fuller, Shultz & Smith
World Bicycle Relief
Xcel Energy

**Join us in telling South Dakota's stories.
Be an underwriter.**

Contact the Corporate Development Manager nearest you.

Ned Gavlick, East River
800-333-0789

Terrie Koehne, West River
800-456-1266



Volume 46 No. 5

Friends of SDPB Office

PO Box 5000
Brookings, SD 57006
(605) 688-4191 or (800) 333-0789

Ryan Howlett, Friends CEO

(800) 456-0556

SDPB Administrative Office

PO Box 5000
Vermillion, SD 57069
(605) 677-5861 or (800) 456-0766

SDPB Home Page

<http://www.SDPB.org>
press@SDPB.org

SDPB Magazine & Promotion Staff

Ruth Bylander, Editor
Carol Robertson, Marketing Manager
Matti Smith, Marketing Manager
Amber Anders, Continuity Director
Dave Foote, Promotion Producer
Michael Zimny, Social Media
Kortny Sterrett, Marketing Intern

Friends of SDPB Board

President Tim Dougherty, Sioux Falls
Vice President Daniel Leikvold, Lead
Treasurer Marcia Hendrickson, Chancellor
Secretary Nancy McCahren, Sioux Falls
Greg Blomberg, Sioux Falls
Wayne Carney, Fort Pierre
Malcom "Chap" Chapman, Rapid City
Harry W. Christianson, Rapid City
Laura Hofer, Sioux Falls
Rebecca Jirava, Brookings
Jeri Johnson, Sioux Falls
Julie M. Johnson, Aberdeen
Katrina Lehr-McKinney, Sioux Falls
Lizabeth Manning, Spearfish
Tom Manzer, Brookings
Thomas Pagel, Milbank
John Charles Sternquist, Yankton
Janelle Krause Toman, Pierre

South Dakota Educational Telecommunications Board

Mark Shlanta, Chair, Sioux Falls
Doyle Estes, Hill City
Kay Jorgensen, Spearfish
Rick Knobe, Sioux Falls
Julie Mathiesen, Sturgis
Gerry Schlenker, Canistota

Jack R. Warner, Regents, Pierre
Julie Overgaard, SDPB, Vermillion
David Zolnowsky, BIT, Pierre

SDPB Management Team

Julie Overgaard, Executive Director
Larry Rohrer, Director of Content
SeVern Ashes, Engineering Director
Bob Bosse, Television Director
Fritz Miller, Marketing Director
Kent Osborne, Online Director
Joe Tlustos, Radio Director

– South Dakota Public Broadcasting is a division of the South Dakota Bureau of Information and Telecommunications.

– Friends of SDPB is a 501(c)3 organization.

– SDPB Magazine is printed by Midstates Printing, Aberdeen, SD. Approximately 14,500 copies of the document were printed at an approximate cost of \$.36 per copy. SDPB Magazine (ISSN 1529-1596) is published and mailed monthly for \$10 per year for Friends of SDPB, 815 Medary, Brookings, SD 57006. Periodical postage paid at Brookings, SD, and additional mailing offices.

Postmaster: Send address changes to Friends of SDPB, Box 5000, Brookings, SD 57006. USPS 0764-400



Prairie Rep

Prairie Repertory Theatre's 45th Season!

Shrek, The Musical
2014



Unlike *Shrek's*
Lord Farquaad,
PRT has something
everyone will want!

*We Make Summer
Better in Brookings
and Brandon!*

S•E•N•A•T•E
South Dakota State University

SOUTH DAKOTA
ARTS COUNCIL



BROOKINGS
RADIO
Your Right Connection

The Marvelous Wonderettes

"One irresistible musical! An utter charm bomb!" *The New York Times*

BOEING BOEING

French farce at its best! "Classic physical comedy." *The New York Times*

Dial "M" for Murder

"Quiet in style but tingling with excitement underneath." *The New York Times*

The SOUND OF MUSIC

The beloved musical returns! "An irresistible score." *Entertainment Weekly*

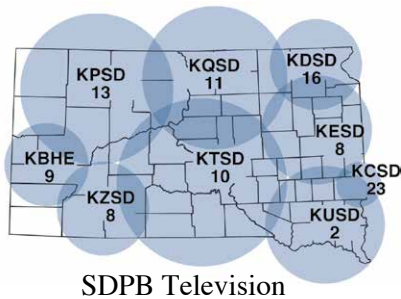
f
prairierep

t
@prairierep

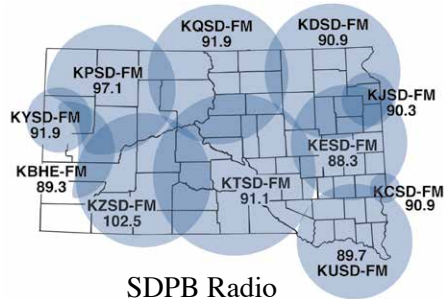
YouTube
prairierep

PRT
WE BELONG
TO YOU!

Brookings and Brandon tickets go on sale June 2 — call 605-688-6045.
Brandon show tickets only go on sale after July 12 — call 605-582-8039.
Tickets and information are also available on www.PrairieRep.org.



SDPB Television



SDPB Radio

Live and on-demand audio and video at SDPB.org



The number on the top of your address is your membership expiration date. The number on the left is your identification. Please use for membership renewals. This will reduce our processing time and speed up your service.

Printed on Recycled Paper

WHAT CHANGED SINCE THE
LAST TIME YOU WOKE UP?



morning edition
NPR NEWS

Listen every weekday



SDPB Radio

Weekdays 5-9am (4-8 MT)