

SDPB

Magazine

June 2016

DAKOTA LIFE:
GLASSBLOWING,
ROAD SIGNS &
TROLLEY TRIPS





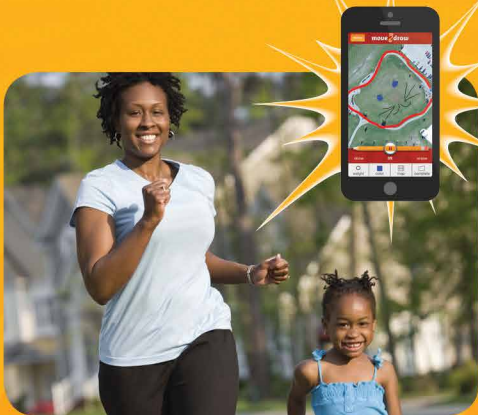
Get ready to get *fit*!

Through *fit*, you can access and experience a suite of resources for parents and kids, all designed to help families make *fit* choices and stay healthy.



For parents

The Sanford *fit*/WebMD website gives parents the tools and resources they need to become healthy role models. Log on to explore healthy recipes, *fit* family challenges and connect with a community of parents and experts for support. Go to webmd.com/parenting/raising-fit-kids.



For kids

The website also offers an experience just for kids. Let them log on and discover entertaining and educational games, videos and challenges. No matter their age, the site has something for all kids to help them make *fit* choices every day and stay *fit* for life. Go to fit.sanfordhealth.org.



On the go

Take *fit* with you wherever you go! Though a series of free and engaging apps, you are never far away from *fit* activities. MOVE2Draw connects fun, friends and *fit* and is a simple and interactive way for kids to move and create their own unique drawings. eMOODicam helps not only capture the moment but also the emotion by allowing kids to bring their feelings to life and share with their friends in an easy-to-use app. Download in your app store today!

Visit us at sanfordhealth.org,
Keyword: *fit*





DAKOTA LIFE - GLASSBLOWING, ROAD SIGNS & TROLLEY TRIPS



Photo: Al Meitzer

Toni Gerlach teaches the art of glassblowing at her studio in Deadwood.



Photo: Al Meitzer

Toni Gerlach's Mind Blown studio is housed in an historic Texaco station.

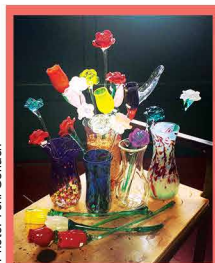


Photo: Toni Gerlach

(Left) Finished glass flowers on display. (Right) Toni teaches glassblowing classes. Spectators are welcome!



This June **Dakota Life** takes a summer road trip to bring you the stories behind South Dakota icons.

Wall Drug billboards are world-renowned, but do you know how the South Dakota symbols come to grace roadsides near and far? **Dakota Life** introduces you to the family behind the Wall Drug signs when we travel to Barr Signs in Philip, where the ubiquitous highway billboards are designed, hand-painted, then sent out and posted.

And we'll venture to Mind Blown Hot Glass Studio and Pump House Coffee & Deli, housed in an historic Texaco station in downtown Deadwood, to meet glassblowing artist Toni Gerlach. Originally from Las Vegas, Gerlach relocated to her parents' home state to create and teach glassblown art. Watch as Gerlach takes heated silica and transforms it step-by-mesmerizing-step from molten glass to colorful bowl.

While we're in Deadwood, we'll board the Trolley on the Trail, the mobility program from the South Dakota Game, Fish & Parks, City of Deadwood, and Neighborhood Housing of the Northern Hills to provide access to the Mickelson Trail for elderly and disabled people. Free-of-charge, the trolleys run once-monthly June through September and reservations are required for the guided tours.

Dakota Life also follows Lynn Briggs of Midland, SD, who is undertaking the restoration of the approximately 300 homemade historic markers researched, built and posted by volunteer historians Roy and Edith Norman of Fort Pierre. The Norman Signs, created in the mid-1970s, are comprised of wood, paint and burned lettering and provide the history of the old Deadwood Trail west of Fort Pierre as well as Native, army, and stagecoach trails.

Tune in for an all new **Dakota Life** on SDPB1, Thursday, June 2, at 8:00 pm (7:00 MT).

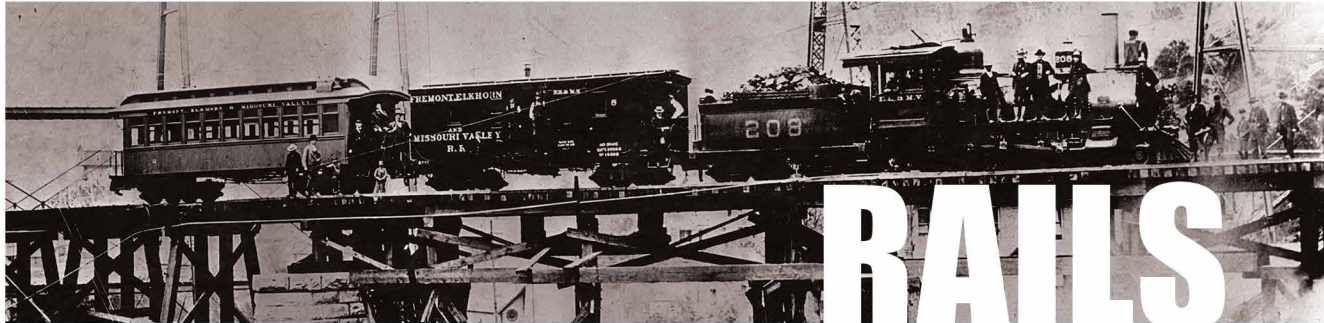
Cover Photo: Chad Coppess. South Dakota Department of Tourism



Photo: Grabill Collection, Library of Congress

TRAILS

Freighting in the Black Hills, c. 1887.



Center of three-level rail trestle, Lead, 1902.

Photo: Historic Black Hills Studios

RAILS

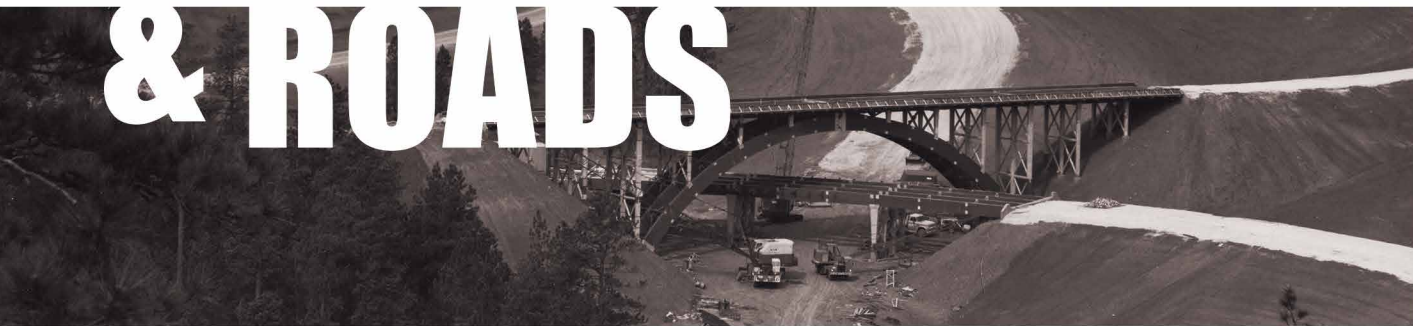
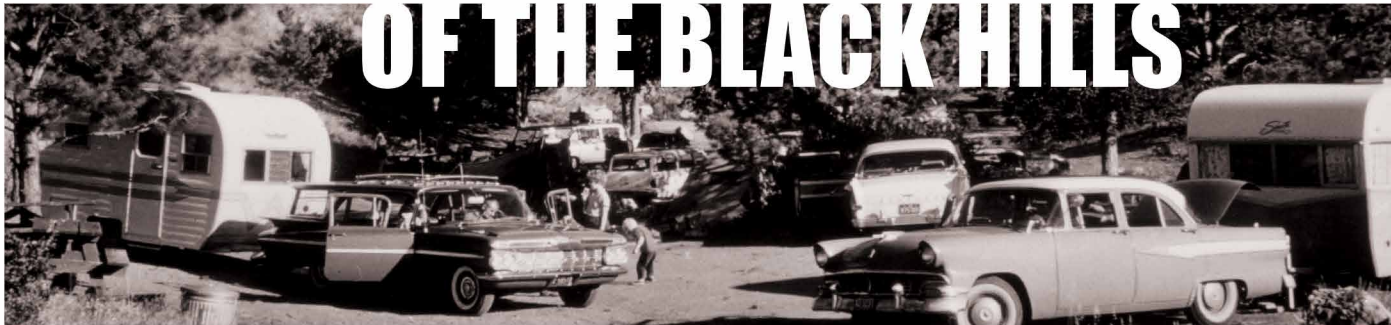


Photo: South Dakota Department of Transportation

Keystone Wye Construction c. 1967.

& ROADS



Wind Cave NP, c. 1959.

Photo: Library of Congress

OF THE BLACK HILLS

Trails, Rails, and Roads of the Black Hills is the latest television installment of SDPB’s **Images of the Past**, a multi-platform documentary project that knits compelling narratives about South Dakota history from rare historical films, photos, diaries and documents.

SDPB’s Brian Gevik has produced **Images of the Past** television episodes and weekly online posts since its inception in 2014. Topics range from the history of the Great Plains buffalo and accounts at Wounded Knee to the crippling 1909 Sioux Falls snowstorm. Working with local historians and museums, Gevik reviews hundreds

of pictures and documents for each TV episode and blog entry. Gevik says topics have a way of presenting themselves during the sifting process, whether it’s a focus on the Thoen Stone, whose cursive scratches account the harrowing final days of ill-fated Black Hills gold prospectors, or a historical view of modes of passage through hill and grassland terrain, as in the episode premiering Thursday, June 16 at 8pm (7MT). “We noticed how much of the material features people on the move,” says Gevik. “People posing with stagecoaches, trains, cars, and planes. People on horseback or driving wagons or waving hello from the window of a train or just standing

by the car while they’re on vacation. The theme could be people on the move, but what ties it all together is being able to move about at will. For that you need roads and bridges and all the rest of it.”

The origins of Black Hills byways may not be top-of-mind for most folks driving Highway 79 for work or pleasure. A closer look reveals we traverse paths originally trod in a natural logic to navigate tricky topography in search of water, food and worship. For example, native inhabitants followed bison from the plains into the Hills via a low pass at Buffalo Gap. The same is true of sacred sites like Bear Butte and Inyan

Interpretive site, Wind Cave NP, 1959.



Photo: Library of Congress

Kara Mountain. “Many of the pre-settlement trails in and around the Black Hills got a lot of use because they connected sites that had religious or spiritual significance,” says Gevik. “Others were well-traveled for purely practical reasons – they provided access to water or other resources. What all trails and roads have in common is that they connect particularly important places. They are where they are because it’s probably the easiest possible way to get from point A to point B.”

In time, competition for natural resources and thoroughfares came as explorers, fur traders and military expeditions moved into the area in the mid-1700 and 1800s. “The military expeditions in the 1850s were all about documentation,” says Gevik. “That was their primary purpose. It sounds fairly benign, but this was not exploration. They were gathering intel for military action against the Indians. At times that was their actual purpose and the mapping and documentation was secondary. They had professional mapmakers traveling with them, sketching it all out for what was then known as the War Department.” Later, fortune-seeking settlers followed trails leading to Custer City and Deadwood from Bismarck, ND, Cheyenne, WY, and Sidney, NE. “Those trails served as stage lines for people moving in, but they were also very significant freight lines for the oxen and mule trains that supplied the gold camps,” says Gevik.

The first locomotive arrived to the Hills (via wagon) in 1879 to haul ore for Homestake Mine, and rail lines multiplied to meet demands for hauling ore, timber, and freight, as well as workers and sightseers. “Rail transportation really endured a long, slow demise,” says Gevik. “The last passenger train out of Deadwood ran in 1949 but it took another 20 years for passenger service to die out entirely in the Black Hills region.

Roads, of course, replaced rails as primary transport and a period of patch-worked country road systems supervened before state and federal highway building ramped up around 1915. “Roads got better and safer as engineers learned more and policy-makers made good roads a political priority,” says Gevik.

It’s the sort of history thousands of people – quite literally – pass on an average day that, when assembled by historians, provides a long view of our connection to the area’s original inhabitants and early immigrants.

Gevik undertakes each **Images of the Past** installment with a mix of pleasure and worry. “I am genuinely fascinated by historical images and film, especially when they show people or places I’m familiar with,” says Gevik. “To be able to look at a landscape or building today and compare what’s here now to what was here a hundred years ago just really opens up your imagination.” Locating images and getting permission to use them can be concerning, Gevik says, but is helped along by contributors like the 1881 Courthouse Museum, Deadwood History, Inc., and the South Dakota Railroad Museum. “For *Trails, Rails, and Roads*, we also have film from the South Dakota State Historical Society showing the construction of the 3-level wooden bridge near Keystone on the road to Mount Rushmore,” says Gevik. “I had the privilege of speaking with the two men who designed it and I think people will be interested in the stories they have to tell.”

(Images of the Past curriculum resources are available SDPB.org/Learn and [PBS LearningMedia](http://PBS.org/LearningMedia), as well as via Online and Education department’s newsletter. Contact steven.rokusek@sdpb.org)



Photo: Grabill Collection, Library of Congress

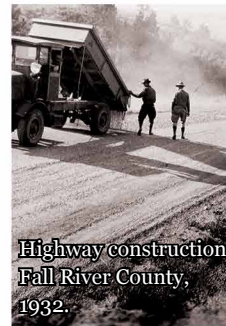


Photo: Library of Congress

“To be able to look at a landscape or building today and compare what’s here now to what was here a hundred years ago just really opens up your imagination.”
-Brian Gevik



Photo: Grabill Collection, Library of Congress

Trails, Rails and Roads premieres
 Thursday, June 16 at
 8pm (7 MT) on SDPB1.
 Catch a live conversation
 about the program with
 producer Brian Gevik and
 Lori Walsh on Dakota
 Midday on June 13.

Photo: Devereaux Library, SDSM&T
 Cedar Pass, Badlands.



SDPB-TV Daytime Programming

Primetime listings on pages 8-15

SDPB1	WEEKDAYS	SATURDAYS	SUNDAYS
5am / 4 MT	Newsline	Beads, Baubles & Jewels	Dakota Life ▼
5:30/4:30 MT	Classical Stretch	Dakota Life ▼	Dinosaur Train
6am / 5 MT	BBC World News	Barney & Friends	Sesame Street
6:30/5:30 MT	Ready Jet Go!	Caillou	Daniel Tiger's Neighborhood
7am / 6 MT	Nature Cat	Curious George	Curious George
7:30/6:30 MT	Curious George	Nature Cat	Nature Cat
8am / 7 MT	Daniel Tiger's Neighborhood	Ready Jet Go!	Ready Jet Go!
8:30/7:30 MT	Daniel Tiger's Neighborhood	Wild Kratts	Wild Kratts
9am / 8 MT	Arthur	Clifford the Big Red Dog	Sid the Science Kid
9:30/8:30 MT	Peg + Cat	Bob the Builder	Word Girl
10am / 9 MT	Dinosaur Train	It's Sew Easy	Arthur
10:30/9:30 MT	Dinosaur Train	Fons & Porter's Love of Quilting	Religion & Ethics Newsweekly
11am / 10 MT	Super Why!	Quilt in a Day	McLaughlin Group
11:30/10:30MT	Thomas & Friends	Sewing with Nancy	Market to Market
Noon / 11 MT	Sesame Street	Quilting Arts	Various
12:30/11:30MT	Cat in the Hat Knows a Lot about That	Rough Cut – Woodworking	Motorweek
1pm / Noon MT	Curious George	Woodsmith Shop	Repeat of previous Thursday 8pm (7 MT)
1:30/12:30 MT	Curious George	This Old House Hour	
2pm / 1 MT	Educational Program	Martha Bakes	Documentary, news, science, nature
2:30/1:30 MT	Nature Cat		
3pm / 2 MT	Ready Jet Go!	America's Test Kitchen	
3:30/2:30MT	Odd Squad	The Victory Garden's Edible Feast	Rick Steves' Europe
4pm / 3 MT	Wild Kratts	Garden Smart	
4:30 / 3:30 MT	Cyberchase	America's Heartland	Nature Adventures ▼
5pm / 4 MT	Martha Speaks	Classic Gospel	Antiques Roadshow
5:30 / 4:30 MT	Nightly Business Report		

SDPB2	MONDAYS	TUESDAYS	WEDNESDAYS	THURSDAYS	FRIDAYS	SATURDAYS	SUNDAYS		
5am / 4 MT	Overhead w/ Smith	Global 3000	To the Contrary	Scully/World Show	Well Read	Religion & Ethics	To the Contrary		
5:30/4:30 MT	Religion & Ethics	Focus on Europe	American Forum	Second Opinion	Closer to Truth	Wealthtrack	Washington Week		
6am / 5 MT	Newsroom Tokyo	Newsroom Tokyo	Newsroom Tokyo	Newsroom Tokyo	Newsroom Tokyo	To the Contrary	McLaughlin Group		
6:30/5:30 MT						McLaughlin Group	Open Mind		
7am / 6 MT	Documentary, news, science, nature & repeats of previous day's SDPB2 primetime programming	Documentary, news, science, nature & repeats of previous day's SDPB2 primetime programming	America ReFramed followed by documentary, news, science, nature & repeats of previous day's SDPB2 primetime programming	Documentary, news, science, nature & repeats of previous day's SDPB2 primetime.	Documentary, news, science, nature & repeats of previous day's SDPB2 primetime.	Documentary, news, science, nature & repeats of previous day's SDPB2 primetime programming	Focus on Europe		
7:30/6:30 MT							Global 3000		
8am / 7 MT							America ReFramed		
8:30/7:30 MT									
9am / 8 MT									
9:30/8:30 MT							Local USA	Wealthtrack	
10am / 9 MT								Religion & Ethics	
10:30/9:30 MT	On Call ▼	Tavis Smiley	Tavis Smiley	Tavis Smiley	Tavis Smiley	History, Documentary & repeats of top programming from previous week	Documentary, news, science, nature		
11am / 10 MT		Tavis Smiley	Tavis Smiley	Tavis Smiley	Tavis Smiley				
11:30/10:30MT	Overhead w/ Smith	Global 3000	To the Contrary	Scully/World Show	Well Read	History, Documentary & repeats of top programming from previous week	Documentary, news, science, nature		
Noon/ 11 MT	Religion & Ethics	Focus on Europe	American Forum	Second Opinion	Closer to Truth				
12:30/11:30MT	Documentary, news, science, nature & repeats of previous day's SDPB2 primetime programming	Documentary	America ReFramed	Documentary, news, science, nature & repeats of previous day's SDPB2 primetime.	Documentary, news, science, nature & repeats of previous day's SDPB2 primetime.		Documentary, news, science, nature & repeats of previous day's SDPB2 primetime.	Point Taken	
1pm/ Noon MT								Pacific Heartbeat/ Jeremiah	Washington Week
1:30/12:30 MT								Local USA	McLaughlin Group
2pm / 1 MT								On Story	Open Mind
2:30/1:30 MT								On Story	Focus on Europe
3pm/2 MT	Newsline	Newsline	On Call ▼	Newsline	Newsline	To The Contrary	Global 3000		
3:30/2:30MT		SD Focus ▼	DW News	On Call ▼	DW News	DW News	Washington Week		
4pm / 3 MT	Local USA	Documentary	Documentary	Documentary	Documentary	NewsHour Wkend	Documentary		
5pm / 4 MT	On Story	Documentary	Documentary	Documentary	Documentary	Point Taken	NewsHour Wkend		
5:30/ 4:30 MT	On Story	Documentary	Documentary	Documentary	Documentary	Point Taken	Documentary		

Create – SDPB3 Programming*

*SDPB3 program grid has changed to reflect 24 hour programming starting at 1:00am CT/ Midnight MT.

	SDPB3	SUNDAY & WEDNESDAY		MONDAY & FRIDAY		TUESDAY & THURSDAY		SATURDAY THEME DAYS
OVERNIGHT	1am/Mid.MT	Lidia's Kitchen	Martha Bakes	Martha Bakes		Lidia's Kitchen		Lidia's Kitchen
	1:30/12:30MT	America's Test Kitchen		America's Test Kitchen		Cook's Country		Cook's Country
	2am/1 MT	Pati's Mexican Table	Chef's Life	Chef's Life		Pati's Mexican Table		Mexican Table
	2:30/1:30 MT	Sara's Weeknight Meals		Sara's Weeknight Meals		Sara's Weeknight Meals		Weeknight Meals
	3am/ 2 MT	This Old House	Hometime	Ask This Old House	Home repair	This Old House		This Old House
	3:30/2:30MT	Richard Bang's Adventures	Travelscope	Rick Steves' Europe	Travel	Richard Bangs' Adventures	Rick Steves Pedal America	Richard Bangs' Adventures
	4am/3 MT		Wild Photo Adventures	Pedal America	Wild Photo Adv.			
4:30/3:30MT	Lidia's Kitchen	Martha Bakes	Martha Bakes	Martha Cooks	Lidia's Kitchen		Lidia's Kitchen	
5am / 4 MT	Fit 2 Stitch		F&P's Love of Quilting		Knit & Crochet Now!		<p>June 4 "Wedded Bliss"</p> <p>June 11 "Midwest Swing"</p> <p>June 18 "Men of Leisure"</p> <p>June 25 "Outdoor Bites"</p>	
5:30/4:30 MT	Scheewe Art Workshpp		Paint This with Jerry Yarnell		Joy of Painting			
6am / 5 MT	Bake! Decorate! Celebrate!		BBQ with Franklin		Cooking w/ Nick Stellino			
6:30/5:30 MT	Mexico One Plate at a Time		Project Smoke		P. Allen Smith's Garden to Table			
7am / 6 MT	Healthful Indian Flavors		Chef John Besh's New Orleans		Dining with the Chef			
7:30/6:30 MT	Jazzy Vegetarian		Taste the Islands		Joanne Weir's Cooking Confidence			
8am / 7 MT	Travel w/ Kids		Dream of Italy		Smart Travels			
8:30/7:30 MT	Journeys in Japan		Travelscope		Travels with Darley			
9am / 8 MT	Lakota Berenstain Bears		This Old House		Hometime			
9:30/8:30 MT	American Woodshop		Rough Cut – Woodworking		Woodsmith Shop			
10am / 9 MT	Grow a Greener World	Garden Smart	P. Allen Smith's Garden Home		The Victory Garden's Edible Feast			
10:30/9:30 MT	Beads, Baubles & Jewels		Start Up		In Pursuit of Passion			
11am / 10 MT	Cooking	Fit 2 Stitch	F&P's Love of Quilting		Knit & Crochet Now!			
11:30/10:30MT	Cooking	Scheewe Art Workshop	Paint This with Jerry Yarnell		Joy of Painting			
12:30/11:30MT	Odd Squad	Bake! Decorate! Celebrate!	BBQ with Franklin		Cooking w/ Nick Stellino			Signing Time!
1pm/ Noon MT	Odd Squad	Mexico One Plate at a Time	Project Smoke		P. Allen Smith's Garden to Table			Biz Kid\$
1:30/12:30 MT	Arthur	Healthful Indian Flavors	Chef John Besh's New Orleans		Dining with the Chef		Zula Patrol	
2pm/ 1 MT	Cyberchase	Jazzy Vegetarian	Taste the Islands		Joanne Weir's Cooking Confidence		Space Racers	
2:30/1:30 MT	Word Girl	Travel Kids	Dream of Italy		Smart Travels		SciGirls	
3pm/2 MT	Sesame Street	Journeys in Japan	Travelscope		Travels with Darley		Arthur	
3:30/2:30MT	Peg + Cat	Rick Steves' Europe	Rick Steves' Europe		Rick Steves' Europe		WordGirl	
4pm/ 3 MT	Barney & Friends	American Woodshop	Rough Cut – Woodworking		Woodsmith Shop		Wild Kratts	
4:30/3:30MT	Mister Rogers	Garden Smart	P. Allen Smith's Garden Home		The Victory Garden's Edible Feast		Little Amadeus	
5pm / 4 MT	Berenstain Bears	Beads, Baubles, & Jewels	Start Up		In Pursuit of Passion		Zoboomafoo	
5:30/4:30 MT	Clifford	This Old House	This Old House		Hometime		Martha Speaks	
6pm / 5 MT	Hands on Crafts	Sara's Weeknight Meals	Sara's Weeknight Meals		Sara's Weeknight Meals		Nature Adv. ▼	
6:30/5:30 MT	Annabel Langbein: The Free Range		Simply Ming		JoAnne Weir Gets Fresh		June 4 "Wedded Bliss"	
7pm / 6 MT	Essential Pepin		Jacques Pepin: More Fast Food		Jacques Pepin: Heart & Soul			
7:30/6:30 MT	Martha Bakes	Lidia's Kitchen	Lidia's Kitchen		Martha Stewart		June 11 "Midwest Swing"	
8pm / 7 MT	America's Test Kitchen	Cook's Country	Cook's Country		America's Test Kitchen			
8:30/7:30 MT	Chef's Life	Moveable Feast	Pati's Mexican Table		Martin Yan's Taste of Vietnam			
9pm / 8 MT	Sara's Weeknight Meals		Sara's Weeknight Meals		Sara's Weeknight Meals		June 18 "Men of Leisure"	
9:30/8:30 MT	This Old House		This Old House		Woodwright's Shop			
10pm / 9 MT	Rick Steves' Europe		Richard Bangs' Adventures		Travelscope		June 25 "Outdoor Bites"	
10:30/9:30 MT	Pedal America		Wild Photo Adventures		Martha Stewart			
11pm / 10 MT	Martha Bakes	Lidia's Kitchen	Lidia's Kitchen		America's Test Kitchen		Test Kitchen	
11:30/10:30MT	America's Test Kitchen	Cook's Country	Cook's Country		America's Test Kitchen		Simply Ming	
Midnight/11 MT	Annabel Langbein: The Free Range		Simply Ming		JoAnne Weir Gets Fresh		Stellino	
12:30/11:30MT	Bake! Decorate! Celebrate!		BBQ with Franklin		Cooking with Nick Stellino		Journeys Africa	
	Curious Traveler		Painting the Town		Journeys in Africa			

- SDPB Television programs are Closed Captioned for the Hearing Impaired.
- Schedule is subject to change. Visit SDPB.org/tvschedules for program details and schedule changes.
- ▼ Indicates locally produced programming.
- SDPB2 and SDPB3 are available free over-the-air via antenna and on most cable systems. Call your local provider to find out where you can find them on your cable system.

WEDNESDAY – JUNE 1

SDPB1

- 6:00 (5:00 MT) **PBS NewsHour**
- 7:00 (6:00 MT) **NOVA** *Invisible Universe Revealed*
- 8:00 (7:00 MT) **Genius by Stephen Hawking** *What Are We?*
- 9:00 (8:00 MT) **Genius by Stephen Hawking** *Where Are We?*
- 10:00 (9:00 MT) **Vicious**
- 10:30 (9:30 MT) **BBC World News**
- 11:00 (10:00 MT) **Charlie Rose**
- Midnight (11:00 MT) **Tavis Smiley**

SDPB2

- 6:00 (5:00 MT) **Unexpected Justice: The Rise of John Paul Stevens**
- 6:30 (5:30 MT) **POV** *Of Men & War*
- 8:00 (7:00 MT) **Frontline** *The Fantasy Sports Gamble*
- 9:00 (8:00 MT) **PBS NewsHour**
- 10:00 (9:00 MT) **Nightly Business Report**
- 10:30 (9:30 MT) **Focus on Europe**
- 11:00 (10:00 MT) **Unexpected Justice: The Rise of John Paul Stevens**
- 11:30 (10:30 MT) **POV** *Of Men & War*

THURSDAY – JUNE 2

SDPB1

- 6:00 (5:00 MT) **PBS NewsHour**
- 7:00 (6:00 MT) **On Call** *Ask Anything*
- 8:00 (7:00 MT) **Dakota Life** *Signs*
- 8:30 (7:30 MT) **Dakota Life** *Spokes People: Two Wheel Transportation*
- 9:00 (8:00 MT) **Doc Martin**
- 10:00 (9:00 MT) **Detectorists**
- 10:30 (9:30 MT) **BBC World News**
- 11:00 (10:00 MT) **Charlie Rose**
- Midnight (11:00 MT) **Tavis Smiley**

SDPB2

- 6:00 (5:00 MT) **Genius by Stephen Hawking** *What Are We?*
- 7:00 (6:00 MT) **Genius by Stephen Hawking** *Where Are We?*
- 8:00 (7:00 MT) **NOVA** *Invisible Universe Revealed*



Photo: TUL

On **Carol Burnett's Favorite Sketches**, join the beloved performer as she presents her personally selected favorite moments from her long-running comedy series, including sketches from the first five years of the show not seen in decades.

SDPB1: Friday, June 3, 9pm (8 MT); Saturday, June 4, 5:30pm (4:30 MT); Saturday, June 11, 2pm (1 MT)
SDPB3: Wednesday, June 8, 7pm (6 MT)

Join Daniel, Mary Duff, and the gang for **Daniel O'Donnell: Stand Beside Me**, their 13th PBS concert featuring new recordings and cherished favorites like "Whatever Will Be, Will Be (Que Sera, Sera)," "How Great Thou Art," and "Stand Beside Me."

SDPB1: Sunday, June 5, 6:30pm (5:30 MT)

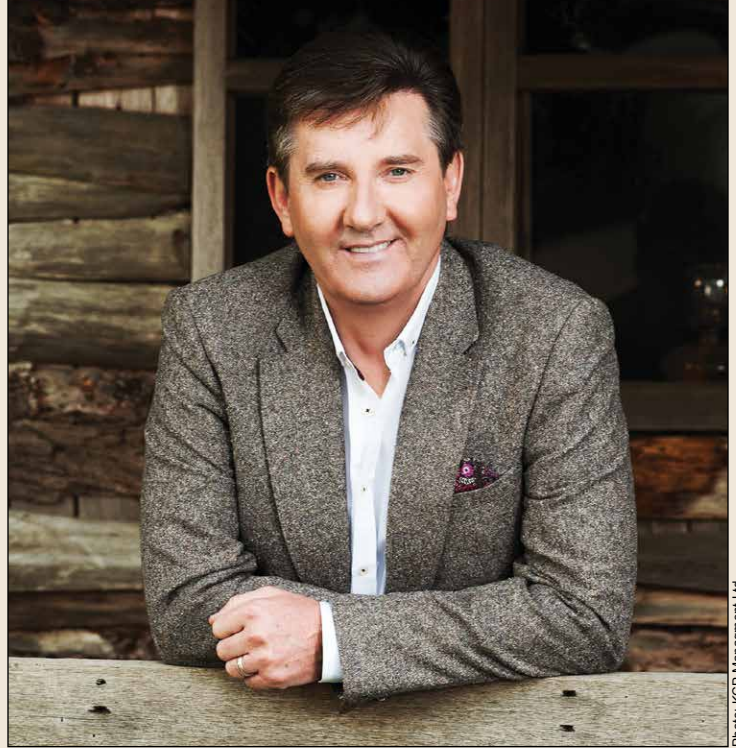


Photo: KCP Management Ltd.

- 9:00 (8:00 MT) **PBS NewsHour**
- 10:00 (9:00 MT) **Nightly Business Report**
- 10:30 (9:30 MT) **Scully/The World Show**
- 11:00 (10:00 MT) **Genius by Stephen Hawking** *What Are We?*
- Midnight (11:00 MT) **Genius by Stephen Hawking** *Where Are We?*

FRIDAY – JUNE 3

SDPB1

- 6:00 (5:00 MT) **PBS NewsHour**
- 7:00 (6:00 MT) **Washington Week**
- 7:30 (6:30 MT) **Charlie Rose –The Week**
- 8:00 (7:00 MT) **McLaughlin Group**
- 8:30 (7:30 MT) **Market to Market**
- 9:00 (8:00 MT) **Carol Burnett's Favorite Sketches**
- 10:00 (9:00 MT) **Keeping Up Appearances**
- 10:30 (9:30 MT) **BBC World News**
- 11:00 (10:00 MT) **Charlie Rose**
- Midnight (11:00 MT) **Tavis Smiley**

SDPB2

- 6:00 (5:00 MT) **Day It Snowed in Miami**
- 7:30 (6:30 MT) **Frontline** *Growing Up Trans*
- 9:00 (8:00 MT) **PBS NewsHour**
- 10:00 (9:00 MT) **Nightly Business Report**
- 10:30 (9:30 MT) **Asia Insight**
- 11:00 (10:00 MT) **Day It Snowed in Miami**
- 12:30 (11:30 MT) **Frontline** *Growing Up Trans*

SATURDAY – JUNE 4

SDPB1

- 10:00am (9:00 MT) **Sewing with Nancy**
- 11:30am (10:30 MT) **FarmHer: The Documentary**
- 1:00 (Noon MT) **Timeless Tractors: The Collectors**
- 2:30 (1:30 MT) **Aging Backwards**
- 3:30 (2:30 MT) **Eat Fat Get Thin**
- 5:30 (4:30 MT) **Carol Burnett's Favorite Sketches**
- 7:00 (6:00 MT) **Lawrence Welk: God Bless America**
- 9:30 (8:30 MT) **Highwaymen Live at Nassau Coliseum**

- 11:00 (10:00 MT) **Great Performances** *Joan Baez 75th Birthday Celebration*

SDPB2

- 1:00 (Noon MT) **Day It Snowed in Miami**
- 2:30 (1:30 MT) **POV** *Of Men & War*
- 4:00 (3:00 MT) **To the Contrary**
- 4:30 (3:30 MT) **Washington Week**
- 5:00 (4:00 MT) **PBS NewsHour Weekend**
- 5:30 (4:30 MT) **Point Taken**
- 6:00 (5:00 MT) **Focus on Europe**
- 6:30 (5:30 MT) **Global 3000**
- 7:00 (6:00 MT) **D-Day 360**
- 8:00 (7:00 MT) **D-Day: The Price of Freedom**
- 9:00 (8:00 MT) **America ReFramed** *The Last Season*
- 10:30 (9:30 MT) **Unexpected Justice: The Rise of John Paul Stevens**
- 11:00 (10:00 MT) **D-Day 360**
- Midnight (11:00 MT) **D-Day: The Price of Freedom**

SDPB3

- 6:00 (5:00 MT) **Ed Slott's Retirement Roadmap**
- 8:00 (7:00 MT) **On the Psychiatrist's Couch**
- 9:30 (8:30 MT) **Quilts of Valor II**
- 11:00 (10:00 MT) **Stronger Bones, Stronger Life**

SUNDAY – JUNE 5

SDPB1

- 10:00am (9:00 MT) **Ed Slott's Retirement Roadmap**
- 11:30 am (10:30 MT) **Stronger Bones, Stronger Life**
- 1:00 (Noon MT) **Suze Orman's Financial Solutions for You**
- 3:00 (2:00 MT) **21 Days to a Slimmer, Younger You**
- 5:00 (4:00 MT) **This Land Is Your Land**
- 6:30 (5:30 MT) **Daniel O'Donnell: Stand Beside Me**
- 8:00 (7:00 MT) **Celtic Thunder** *Legacy*
- 10:00 (9:00 MT) **Josh Groban: Stages Live**
- 11:30 (10:30 MT) **Aging Backwards**



Watch **Celtic Thunder** *Legacy* and get seats to see the Irish singing group in concert in Sioux Falls. This powerful concert reunites Colm Keegan, Keith Harkin, Ryan Kelly, Emmett O'Hanlon and Neil Byrne with guest artist Damian McGinty, an original member of *Celtic Thunder* who went on to win Fox's *The Glee Project* before landing the role of Rory Flanagan on the series *Glee*! SDPB1: Tuesday, June 7, 7pm (6 MT) & Saturday, June 11, 7pm (6 MT)

(June 5, continued)

SDPB2

1:00 (Noon MT) **Point Taken**
 1:30 (12:30 MT) **Washington Week**
 2:00 (1:00 MT) **McLaughlin Group**
 2:30 (1:30 MT) **Open Mind**
 3:00 (2:00 MT) **Focus on Europe**
 3:30 (2:30 MT) **Global 3000**
 4:00 (3:00 MT) **Taming Shakespeare**
 5:00 (4:00 MT) **PBS NewsHour Weekend**
 5:30 (4:30 MT) **Unexpected Justice: The Rise of John Paul Stevens**
 6:00 (5:00 MT) **Great Conversations Philippe de Montebello & Michael Kimmelman**
 7:00 (6:00 MT) **Nature Animal Childhood**
 8:00 (7:00 MT) **Secrets of the Dead Tales of the Waria**
 9:00 (8:00 MT) **Global Voices**
 10:00 (9:00 MT) **POV Web Junkie**
 10:30 (9:30 MT) **Focus on Europe**
 11:00 (10:00 MT) **Nature Animal Childhood**
 Midnight (11:00 MT) **Secrets of the Dead Jamestown's Dark Winter**

SDPB3

6:00 (5:00 MT) **Suze Orman's Financial Solutions for You**
 8:00 (7:00 MT) **Eat to Live w/Dr. Joel Fuhrman**
 10:00 (9:00 MT) **Aging Backwards**
 11:00 (10:00 MT) **Eat Fat Get Thin**

MONDAY – JUNE 6

SDPB1

6:00 (5:00 MT) **PBS NewsHour**
 7:00 (6:00 MT) **Carol Burnett's Favorite Sketches**
 8:30 (7:30 MT) **Nitty Gritty Dirt Band: 50 Years and Circlin' Back**
 10:00 (9:00 MT) **Over South Dakota** 🦅
 11:30 (10:30 MT) **Ken Burns: The Civil War**

SDPB2

6:00 (5:00 MT) **National Parks: America's Best Idea**
 8:00 (7:00 MT) **Local USA American Graduate Week**
 8:30 (7:30 MT) **On Story**
 9:00 (8:00 MT) **PBS NewsHour**
 10:00 (9:00 MT) **Nightly Business Report**
 10:30 (9:30 MT) **Religion & Ethics Newsweekly**
 11:00 (10:00 MT) **National Parks: America's Best Idea**

SDPB3

7:00 (6:00 MT) **Jackie Robinson Part 1**
 9:30 (8:30 MT) **Jackie Robinson Part 2**

TUESDAY – JUNE 7

SDPB1

6:00 (5:00 MT) **PBS NewsHour**
 7:00 (6:00 MT) **Celtic Thunder Legacy**
 9:00 (8:00 MT) **Celtic Woman Destiny**
 11:00 (10:00 MT) **Josh Groban: Stages Live**

SDPB2

7:00 (6:00 MT) **America ReFramed College Week**
 8:30 (7:30 MT) **Local USA Stories from the Classroom**
 9:00 (8:00 MT) **PBS NewsHour**
 10:00 (9:00 MT) **Nightly Business Report**
 10:30 (9:30 MT) **Global 3000**
 11:00 (10:00 MT) **America ReFramed College Week**

SDPB3

7:00 (6:00 MT) **Ken Burns: The Civil War**
 8:30 (7:30 MT) **Genealogy Roadshow**
 9:30 (8:30 MT) **Brain Maker w/Dr. David Perlmutter**

WEDNESDAY – JUNE 8

SDPB1

6:00 (5:00 MT) **PBS NewsHour**
 7:00 (6:00 MT) **On the Psychiatrist's Couch**
 8:30 (7:30 MT) **Carpenters: Close to You**
 10:00 (9:00 MT) **Ken Burns: The Civil War**
 11:30 (10:30 MT) **Easy Yoga for Arthritis**

SDPB2

6:00 (5:00 MT) **Anyone & Everyone**
 7:00 (6:00 MT) **POV Out in the Night**
 8:00 (7:00 MT) **AfroPoP: The Ultimate Cultural Exchange**
 9:00 (8:00 MT) **PBS NewsHour**
 10:00 (9:00 MT) **Nightly Business Report**
 10:30 (9:30 MT) **Focus on Europe**
 11:00 (10:00 MT) **Anyone & Everyone**
 Midnight (11:00 MT) **POV Out in the Night**

SDPB3

7:00 (6:00 MT) **Carol Burnett's Favorite Sketches**
 8:30 (7:30 MT) **Easy Yoga for Diabetes**
 10:30 (9:30 MT) **21 Days to a Slimmer, Younger You**



Nitty Gritty Dirt Band: 50 Years and Circlin' Back celebrates five decades of rocking. Filmed in Nashville's Ryman Auditorium, the NGDB is joined on stage by John Prine, Vince Gill, Rodney Crowell, Jerry Jeff Walker, and Alison Krause as well as former members Jimmy Ibbotson and Jackson Browne. Features hits like "Fishin' in the Dark" and "Mr. Bojangles."

SDPB1: Monday, June 6, 8:30pm (7:30 MT) & Thursday, June 9, 10pm (9 MT)



Photo: Sun and Sky Entertainment

Ethan Bortnick has moved international audiences since stunning the world as a child piano prodigy at just three years of age. Join the accomplished pianist, composer, singer, entertainer, and humanitarian for **Ethan Bortnick Live in Concert: The Power of Music**. Accompanied by a 50-piece orchestra, a four-piece band, and a 120-member Kids Choir, Ethan is also joined by Damian McGinty of *Glee* and Celtic Thunder, and Grammy-nominated vocalist Jane Monheit.

SDPB1: Sunday, June 12, 5:30pm (4:30 MT)

THURSDAY – JUNE 9

SDPB1

- 6:00 (5:00 MT) **PBS NewsHour**
- 7:00 (6:00 MT) **Highwaymen Live at Nassau Coliseum**
- 8:30 (7:30 MT) **This Land Is Your Land**
- 10:00 (9:00 MT) **Nitty Gritty Dirt Band: 50 Years and Circlin' Back**
- 11:30 (10:30 MT) **Simon & Garfunkel: The Concert in Central Park**

SDPB2

- 6:00 (5:00 MT) **NOVA Cyberwar Threat**
- 7:00 (6:00 MT) **Human Face of Big Data**
- 8:00 (7:00 MT) **Ted Talks War & Peace**
- 9:00 (8:00 MT) **PBS NewsHour**
- 10:00 (9:00 MT) **Nightly Business Report**
- 10:30 (9:30 MT) **Scully/The World Show**
- 11:00 (10:00 MT) **NOVA Cyberwar Threat**
- Midnight (11:00 MT) **Human Face of Big Data**

SDPB3

- 7:00 (6:00 MT) **Aging Backwards**
- 8:00 (7:00 MT) **Celtic Thunder Legacy**
- 8:30 (7:30 MT) **Easy Yoga for Diabetes**
- 10:00 (9:00 MT) **Kingston Trio**

FRIDAY – JUNE 10

SDPB1

- 6:00 (5:00 MT) **PBS NewsHour**
- 7:00 (6:00 MT) **Aging Backwards**
- 8:00 (7:00 MT) **On the Psychiatrist's Couch**
- 10:00 (9:00 MT) **Simon & Garfunkel: The Concert in Central Park**
- 11:30 (10:30 MT) **Nitty Gritty Dirt Band: 50 Years and Circlin' Back**

SDPB2

- 6:00 (5:00 MT) **Independent Lens How to Survive a Plague**

- 7:30 (6:30 MT) **Independent Lens God Loves Uganda**
- 9:00 (8:00 MT) **PBS NewsHour**
- 10:00 (9:00 MT) **Nightly Business Report**
- 10:30 (9:30 MT) **Asia Insight**
- 11:00 (10:00 MT) **Independent Lens How to Survive a Plague**
- 12:30 (11:30 MT) **Independent Lens God Loves Uganda**

SDPB3

- 7:00 (6:00 MT) **Rick Steves' Europe Travel Skills**
- 9:00 (8:00 MT) **Rick Steves' Special The Holy Land: Israelis & Palestinians Today**
- 11:00 (10:00 MT) **Aging Backwards**

SATURDAY – JUNE 11

SDPB1

- 10:00am (9:00 MT) **Easy Yoga for Diabetes**
- 11:00am (10:00 MT) **On the Psychiatrist's Couch**
- 1:00 (Noon MT) **Rick Steves' Dynamic Europe**
- 2:00 (1:00 MT) **Carol Burnett's Favorite Sketches**
- 3:30 (2:30 MT) **Suze Orman's Financial Solutions for You**
- 5:30 (4:30 MT) **This Land Is Your Land**
- 7:00 (6:00 MT) **Celtic Thunder Legacy**
- 9:00 (8:00 MT) **Rhythm & Blues 40: A Soul Spectacular**
- 11:00 (10:00 MT) **Great Performances Joan Baez 75th Birthday**

SDPB2

- 1:00 (Noon MT) **Independent Lens How to Survive a Plague**
- 2:30 (1:30 MT) **Rule**
- 4:00 (3:00 MT) **To the Contrary**
- 4:30 (3:30 MT) **Washington Week**

- 5:00 (4:00 MT) **PBS NewsHour Weekend**
- 5:30 (4:30 MT) **Charlie Rose—The Week**
- 6:00 (5:00 MT) **Focus on Europe**
- 6:30 (5:30 MT) **Global 3000**
- 7:00 (6:00 MT) **Operation Maneater**
- 9:00 (8:00 MT) **America ReFramed College Week**
- 10:30 (9:30 MT) **Local USA Stories from the Classroom**
- 11:00 (10:00 MT) **Operation Maneater**

SDPB3

- 7:00 (6:00 MT) **Stronger Bones, Stronger Life**
- 8:30 (7:30 MT) **Dr. Fuhrman's End Dieting Forever**
- 9:00 (8:00 MT) **Rick Steves' Special The Holy Land: Israelis & Palestinians Today**
- 10:30 (9:30 MT) **On the Psychiatrist's Couch**

SUNDAY – JUNE 12

SDPB1

- 10:30am (9:30 MT) **On the Psychiatrist's Couch**
- Noon (11:00 MT) **Celtic Thunder: Legacy**
- 2:00 (1:00 MT) **Over South Dakota**
- 3:30 (2:30 MT) **Big Band Years**
- 5:30 (4:30 MT) **Ethan Bortnick Live in Concert: The Power of Music**
- 7:00 (6:00 MT) **Best of Festival**
- 11:00 (10:00 MT) **On the Psychiatrist's Couch**

SDPB2

- 7:00 (6:00 MT) **Nature Animal Homes: The Nest**
- 8:00 (7:00 MT) **Skeletons of the Sahara**
- 9:00 (8:00 MT) **Global Voices**
- 10:00 (9:00 MT) **AfroPoP: The Ultimate Cultural Exchange**
- 11:00 (10:00 MT) **Nature Animal Homes: The Nest**
- Midnight (11:00 MT) **Skeletons of the Sahara**

SDPB3

- 8:30 (7:30 MT) **Power of Purpose**
- 10:00 (9:00 MT) **Ken Burns: The Civil War**

MONDAY – JUNE 13

SDPB1

- 6:00 (5:00 MT) **PBS NewsHour**
- 7:00 (6:00 MT) **Antiques Roadshow Kansas City, Hour 2**
- 8:00 (7:00 MT) **Antiques Roadshow Kansas City, Hour 3**
- 9:00 (8:00 MT) **Treblinka's Last Witness**
- 10:30 (9:30 MT) **BBC World News**
- 11:00 (10:00 MT) **Charlie Rose**
- Midnight (11:00 MT) **Tavis Smiley**

SDPB2

- 6:00 (5:00 MT) **National Parks: America's Best Idea**
- 8:30 (7:30 MT) **On Story**
- 9:00 (8:00 MT) **PBS NewsHour**
- 10:00 (9:00 MT) **Nightly Business Report**
- 10:30 (9:30 MT) **Religion & Ethics Newsweek**
- 11:00 (10:00 MT) **National Parks: America's Best Idea**

TUESDAY – JUNE 14

SDPB1

- 6:00 (5:00 MT) **PBS NewsHour**
- 7:00 (6:00 MT) **Genealogy Roadshow Boston**
- 8:00 (7:00 MT) **The Draft**
- 9:00 (8:00 MT) **Frontline Gunned Down: The Power of the NRA**
- 10:00 (9:00 MT) **Keeping Up Appearances**

(June 14, continued)

10:30 (9:30 MT) **BBC World News**
11:00 (10:00 MT) **Charlie Rose**
Midnight (11:00 MT) **Tavis Smiley**

SDPB2

6:00 (5:00 MT) **Big Joy: The Adventures of James Broughton**
7:00 (6:00 MT) **America ReFramed Before You Know It**
9:00 (8:00 MT) **PBS NewsHour**
10:00 (9:00 MT) **Nightly Business Report**
10:30 (9:30 MT) **Global 3000**
11:00 (10:00 MT) **America ReFramed Before You Know It**

WEDNESDAY – JUNE 15

SDPB1

6:00 (5:00 MT) **PBS NewsHour**
7:00 (6:00 MT) **Best of Big Blue Live**
8:00 (7:00 MT) **NOVA Deadliest Earthquakes**
9:00 (8:00 MT) **Life on Fire Phoenix Temple**
10:30 (9:30 MT) **BBC World News**
11:00 (10:00 MT) **Charlie Rose**
Midnight (11:00 MT) **Tavis Smiley**

SDPB2

6:00 (5:00 MT) **Committee**
6:30 (5:30 MT) **POV After Tiller**
8:00 (7:00 MT) **Frontline Gunned Down: The Power of the NRA**
9:00 (8:00 MT) **PBS NewsHour**
10:00 (9:00 MT) **Nightly Business Report**
10:30 (9:30 MT) **Focus on Europe**
11:00 (10:00 MT) **Committee**
11:30 (10:30 MT) **POV After Tiller**

THURSDAY – JUNE 16

SDPB1

6:00 (5:00 MT) **PBS NewsHour**
7:00 (6:00 MT) **On Call** *Pain Medication: Use & Abuse*
8:00 (7:00 MT) **Images of the Past** *Trails, Rails & Roads of the Black Hills*
8:30 (7:30 MT) **Amazing Grace: The Grace Day Story**
9:00 (8:00 MT) **Doc Martin**
10:00 (9:00 MT) **Detectorists**
10:30 (9:30 MT) **BBC World News**
11:00 (10:00 MT) **Charlie Rose**
Midnight (11:00 MT) **Tavis Smiley**

SDPB2

6:00 (5:00 MT) **NOVA Deadliest Earthquakes**
7:00 (6:00 MT) **Secrets of the Dead** *Vampire Legend*
8:00 (7:00 MT) **Time Scanners**
9:00 (8:00 MT) **PBS NewsHour**
10:00 (9:00 MT) **Nightly Business Report**
10:30 (9:30 MT) **Scully/The World**
11:00 (10:00 MT) **NOVA Deadliest Earthquakes**
Midnight (11:00 MT) **Secrets of the Dead** *Vampire Legend*

FRIDAY – JUNE 17

SDPB1

6:00 (5:00 MT) **PBS NewsHour**
7:00 (6:00 MT) **Washington Week**
7:30 (6:30 MT) **Charlie Rose –The Week**
8:00 (7:00 MT) **McLaughlin Group**
8:30 (7:30 MT) **Market to Market**
9:00 (8:00 MT) **Johnny Cash's Bitter Tears**
10:00 (9:00 MT) **Workin' Man Blues**
10:30 (9:30 MT) **BBC World News**

11:00 (10:00 MT) **Charlie Rose**
Midnight (11:00 MT) **Point Taken**

SDPB2

6:00 (5:00 MT) **Independent Lens** *The New Black/Limited Partnership/Kumu Hina*
9:00 (8:00 MT) **PBS NewsHour**
10:00 (9:00 MT) **Nightly Business Report**
10:30 (9:30 MT) **Asia Insight**
11:00 (10:00 MT) **Independent Lens** *The New Black/Limited Partnership*

SATURDAY – JUNE 18

SDPB1

6:00 (5:00 MT) **Lawrence Welk**
7:00 (6:00 MT) **Doc Martin**
8:00 (7:00 MT) **Keeping Up Appearances**
8:30 (7:30 MT) **As Time Goes By**
9:00 (8:00 MT) **Father Brown**
10:00 (9:00 MT) **No Cover, No Minimum** *Dakota Jazz Collective*
10:30 (9:30 MT) **BBC World News**
11:00 (10:00 MT) **Austin City Limits** *Nick Cave & The Bad Seeds*
Midnight (11:00 MT) **Live from the Artists Den** *Gary Clarke Jr.*

SDPB2

6:00 (5:00 MT) **Focus on Europe**
6:30 (5:30 MT) **Global 3000**
7:00 (6:00 MT) **Paving the Way: The National Park-to-Park Highway**
9:00 (8:00 MT) **America ReFramed Before You Know It**
11:00 (10:00 MT) **Paving the Way: The National Park-to-Park Highway**

SUNDAY – JUNE 19

SDPB1

1:00 (Noon MT) **Images of the Past** *Trails, Rails & Roads of the Black Hills*
1:30 (12:30 MT) **Amazing Grace: The Grace Day Story**
2:00 (1:00 MT) **Liberating a Continent: John Paul II & the Fall of Communism**
3:30 (2:30 MT) **Finding Kalman**
4:00 (3:00 MT) **Rick Steves' Europe**
4:30 (3:30 MT) **Nature Adventures** *Top 10 Favorite Animals*
5:00 (4:00 MT) **Antiques Roadshow** *Kansas City, Hour 2*
6:00 (5:00 MT) **Midsomer Murders**
7:00 (6:00 MT) **Vicious**
8:00 (7:00 MT) **Masterpiece Endeavour**
9:30 (8:30 MT) **The Tunnel**
10:30 (9:30 MT) **Great Vacation Squeeze**
11:00 (10:00 MT) **Globe Trekker**
Midnight (11:00 MT) **Washington Week**

SDPB2

6:00 (5:00 MT) **Great Conversations** *Jessye Norman & Gloria Steinem*
7:00 (6:00 MT) **Nature Animal Homes: Location, Location, Location**
8:00 (7:00 MT) **Heart of the World: Colorado's Natural Parks**
9:00 (8:00 MT) **Global Voices**
10:00 (9:00 MT) **Big Joy: The Adventures of James Broughton**
11:00 (10:00 MT) **Nature Animal Homes: Location, Location, Location**
Midnight (11:00 MT) **Heart of the World: Colorado's Natural Parks**



Photo: WETA

Shaun Evans (*The Take, The Last Weekend, Silk*), charms audiences with his portrayal of the cerebral and solitary Detective Constable Morse in the third season of **Masterpiece Endeavour**. Set in 1960s Oxford, this *Inspector Morse* prequel follows Endeavour Morse as he confronts the aftermath of the events that left him in prison and his senior officer, DI Thursday (Roger Allam), with a life-threatening injury.

SDPB1: Sundays, June 19 & 26, 8pm (7 MT)

(continued on page 14)



Catch breathtaking views of our home state in **Over South Dakota**.

June TV: Americana and Imported Intrigue

Tune in for some American treasures and compelling British drama this June on SDPB.

The natural beauty of South Dakota is on full display in **Over South Dakota**, a high-def television documentary that takes viewers on a birds-eye journey from the cities to the plains to the mountains. South Dakota singer and songwriter Boyd Bristow narrates, and the production features poetry from Sioux Falls-based writer Patrick Hicks and the late cowboy poet Badger Clark. **Over South Dakota** airs on SDPB1 Monday, June 6 at 10pm (9 MT) and Sunday, June 12 at 2pm (3 MT).

Join the legendary Joan Baez in her very own birthday folk fest on **Great Performances Joan Baez 75th Birthday Celebration**. Joining Baez to sing her hits of peace and protest are David Crosby, Mavis Staples, Judy Collins, Jackson Browne, Damien Rice, Paul Simon and the Indigo Girls. Tune in Saturdays, June 4 & 11 at 11pm (10 MT) on SDPB1.

The beat goes on with **The Carpenters: Close to You** – a music-filled documentary that traces the Carpenters’ career through the eyes

of Richard Carpenter and the group’s friends in the music business. Watch on SDPB1, Wednesday, June 8 at 8:30 (7:30 MT).

Also coming in June:

Lovers of British and Nordic noir will delight in **The Tunnel**, the new English/French detective drama adapted from Scandinavian crime series *The Bridge*. **The Tunnel** stars Stephen Dillane (Stannis Baratheon from *Game of Thrones*) and Clémence Poésy (*Harry Potter*) as British and French police detectives investigating crimes of international intrigue. Watch on SDPB1, Sundays, June 19 & 26, 9:30 pm (8:30 MT).

Follow **Dancing on the Edge**, the drama about a black jazz band’s experiences in London in the 1930s. Composed of talented musicians, the band achieves success and secures record deals. But tragedy strikes, setting off a chain of events that threatens the band’s survival. From director Stephen Poliakoff (*Perfect Strangers, Friends and Crocodiles*) and starring Chiwetel Ejiofor (*12 Years a Slave, The Martian*) and Angel Coulby (*Merlin*). Premieres on SDPB1, Sunday, June 26 at 7pm (6 MT).



Joan Baez sings on SDPB Saturdays, June 4 & 11.



Catch **The Carpenters: Close to You** on SDPB1, Wednesday, June 8 at 8:30pm (7:30 MT).



The Tunnel, a new British detective drama premieres on SDPB in June.



Premiering Sunday, June 26, **Dancing on the Edge** will have you on the edge of your seat.



Exclusive Escorted Tours!

Bursch Travel has taken care of all the details on these exclusive trips.
All you have to do is sit back and enjoy!



BEST OF ITALY

Oct 14-26, 2016

Escorted by Donna Strommen

Bursch Travel Alexandria

PANAMA CANAL WITH PRINCESS CRUISES

April 17 – May 2, 2017

Join Fred and Terri Bursch on the Coral Princess as it sails through the Panama Canal.

CANADA & NEW ENGLAND FALL FOLIAGE CRUISE

October 5 – 14, 2017

Onboard Regal Princess

Escorted by Dan & Melinda Mansfield

Includes 2 pre-cruise nights in New York City

For complete details of each of these trips and others visit
www.burschtravel.com

Bursch Travel

803 Saint Patrick Street, Rapid City SD

605-342-2700 or 800-658-3348

15-day panama canal — ocean to ocean

Coral Princess® | Fort Lauderdale to Los Angeles | 4/17/17 - 5/2/17



© 2016 Princess Cruise Lines, Ltd. Ships of Bermudan and British registry.



Join Fred and Terri Bursch on Coral Princess as it sails through the epic engineering marvel of the Panama Canal

Contact Bursch Travel
803 Saint Patrick St. Rapid City, SD | 605.342.2700 or 800.658.3348
www.burschtravel.com



(continued from page 11)

MONDAY – JUNE 20

SDPB1

- 6:00 (5:00 MT) **PBS NewsHour**
- 7:00 (6:00 MT) **Antiques Roadshow** *Vintage Tucson*
- 8:00 (7:00 MT) **Antiques Roadshow** *Vintage Phoenix*
- 9:00 (8:00 MT) **Independent Lens** *Trapped*
- 10:30 (9:30 MT) **BBC World News**
- 11:00 (10:00 MT) **Charlie Rose**
- Midnight (11:00 MT) **Tavis Smiley**

SDPB2

- 6:00 (5:00 MT) **National Parks: America's Best Idea**
- 8:00 (7:00 MT) **Local USA** *Through the Past*
- 8:30 (7:30 MT) **On Story**
- 9:00 (8:00 MT) **PBS NewsHour**
- 10:00 (9:00 MT) **Nightly Business Report**
- 10:30 (9:30 MT) **Religion & Ethics Newsweekly**
- 11:00 (10:00 MT) **National Parks: America's Best Idea**

TUESDAY – JUNE 21

SDPB1

- 6:00 (5:00 MT) **PBS NewsHour**
- 7:00 (6:00 MT) **Genealogy Roadshow** *Providence*
- 8:00 (7:00 MT) **Greeks** *Cavemen to Kings*
- 9:00 (8:00 MT) **Frontline** *Being Mortal*
- 10:00 (9:00 MT) **Keeping Up Appearances**
- 10:30 (9:30 MT) **BBC World News**
- 11:00 (10:00 MT) **Charlie Rose**
- Midnight (11:00 MT) **Point Taken**

SDPB2

- 6:00 (5:00 MT) **Campaign**
- 7:00 (6:00 MT) **America ReFramed** *The Hand That Feeds*

- 8:30 (7:30 MT) **Facing Fear**
- 9:00 (8:00 MT) **PBS NewsHour**
- 10:00 (9:00 MT) **Nightly Business Report**
- 10:30 (9:30 MT) **Global 3000**
- 11:00 (10:00 MT) **America ReFramed** *The Hand That Feeds*

WEDNESDAY – JUNE 22

SDPB1

- 6:00 (5:00 MT) **PBS NewsHour**
- 7:00 (6:00 MT) **Great Polar Bear Feast**
- 8:00 (7:00 MT) **NOVA** *Nazi Attack on America*
- 9:00 (8:00 MT) **Nazi Mega Weapons** *Hitler's Killer Subs*
- 10:00 (9:00 MT) **Vicious**
- 10:30 (9:30 MT) **BBC World News**
- 11:00 (10:00 MT) **Charlie Rose**
- Midnight (11:00 MT) **Tavis Smiley**

SDPB2

- 6:00 (5:00 MT) **Forensics: Beyond the CSI Effect**
- 6:30 (5:30 MT) **Independent Lens** *Trapped*
- 8:00 (7:00 MT) **Frontline** *Being Mortal*
- 9:00 (8:00 MT) **PBS NewsHour**
- 10:00 (9:00 MT) **Nightly Business Report**
- 10:30 (9:30 MT) **Focus on Europe**
- 11:00 (10:00 MT) **Forensics: Beyond the CSI Effect**
- 11:30 (10:30 MT) **Independent Lens** *Trapped*

THURSDAY – JUNE 23

SDPB1

- 6:00 (5:00 MT) **PBS NewsHour**
- 7:00 (6:00 MT) **On Call** *Stump the Doctor and Ask Anything*
- 8:00 (7:00 MT) **Dakota Life** *Young People Exploring Their Dreams*
- 8:30 (7:30 MT) **Dakota Life** *Cowboy Up!*
- 9:00 (8:00 MT) **Doc Martin**
- 10:00 (9:00 MT) **Detectorists**



Photo: Steve Morgan

In a quest for world domination, the Nazis built some of the biggest and deadliest pieces of military hardware and malevolent technology in history. **Nazi Mega Weapons** tells the story of Germany's engagement in World War II from a unique perspective, uncovering the engineering secrets of iconic megastructures, telling the stories of the engineers who designed them and revealing how these structures sparked a technological revolution that changed warfare forever.

SDPB1: Wednesday, June 22, 9pm (8 MT)
SDPB2: Thursday, June 23, 7pm (6 MT) & Midnight (11 MT)

- 10:30 (9:30 MT) **BBC World News**
- 11:00 (10:00 MT) **Charlie Rose**
- Midnight (11:00 MT) **Tavis Smiley**

SDPB2

- 6:00 (5:00 MT) **NOVA** *Nazi Attack on America*
- 7:00 (6:00 MT) **Nazi Mega Weapons**
- 9:00 (8:00 MT) **PBS NewsHour**
- 10:00 (9:00 MT) **Nightly Business Report**
- 10:30 (9:30 MT) **Scully/The World Show**
- 11:00 (10:00 MT) **NOVA** *Nazi Attack on America*
- Midnight (11:00 MT) **Nazi Mega Weapons**

FRIDAY – JUNE 24

SDPB1

- 6:00 (5:00 MT) **PBS NewsHour**
- 7:00 (6:00 MT) **Washington Week**
- 7:30 (6:30 MT) **Charlie Rose—The Week**
- 8:00 (7:00 MT) **McLaughlin Group**
- 8:30 (7:30 MT) **Market to Market**
- 9:00 (8:00 MT) **Hitmakers**
- 10:00 (9:00 MT) **MN Original**
- 10:30 (9:30 MT) **BBC World News**
- 11:00 (10:00 MT) **Charlie Rose**
- Midnight (11:00 MT) **Tavis Smiley**

SDPB2

- 6:00 (5:00 MT) **Twice Born—Stories from the Special Delivery Unit**
- 9:00 (8:00 MT) **PBS NewsHour**
- 10:00 (9:00 MT) **Nightly Business Report**
- 10:30 (9:30 MT) **Asia Insight**
- 11:00 (10:00 MT) **Twice Born—Stories from the Special Delivery Unit**

SATURDAY – JUNE 25

SDPB1

- 6:00 (5:00 MT) **Lawrence Welk**
- 6:30 (5:30 MT) **Global 3000**
- 7:00 (6:00 MT) **Doc Martin**
- 8:00 (7:00 MT) **Keeping Up Appearances**
- 8:30 (7:30 MT) **As Time Goes By**
- 9:00 (8:00 MT) **Father Brown**
- 10:00 (9:00 MT) **No Cover, No Minimum** *Alicia Olatujah*
- 11:00 (10:00 MT) **Austin City Limits** *The Black Keys/J. Roddy Walston & The Business*
- Midnight (11:00 MT) **Soundstage** *Toby Keith*



On **The Great Polar Bear Feast**, investigate the problems facing a unique population of polar bears due to climate change. At the heart is an extraordinary event — the annual gathering of up to 80 polar bears on Barter Island in the Arctic Ocean each September.
SDPB1: Wednesday, June 22, 7pm (6 MT)

Photo: Andrew Graham Renegade Pictures Ltd.

(June 26, continued)

SDPB2

- 6:00 (5:00 MT) **Focus on Europe**
- 6:30 (5:30 MT) **Global 3000**
- 7:00 (6:00 MT) **Great Polar Bear Feast**
- 8:00 (7:00 MT) **Operation Maneater Polar Bear**
- 9:00 (8:00 MT) **America ReFramed The Hand That Feeds**
- 10:30 (9:30 MT) **Facing Fear**
- 11:00 (10:00 MT) **Great Polar Bear Feast**
- Midnight (11:00 MT) **Operation Maneater Polar Bear**

SUNDAY – JUNE 26

SDPB1

- 1:00 (Noon MT) **Dakota Life**  *Young People Exploring Their Dreams*
- 1:30 (12:30 MT) **Dakota Life**  *Cowboy Up!*
- 2:00 (1:00 MT) **Taming Shakespeare**
- 3:00 (2:00 MT) **Chihuly Outside**
- 4:00 (3:00 MT) **Rick Steves' Europe**
- 4:30 (3:30 MT) **Nature Adventures**  *Fall in the Black Hills*
- 5:00 (4:00 MT) **Antiques Roadshow Vintage Tucson**
- 6:00 (5:00 MT) **Midsomer Murders**
- 7:00 (6:00 MT) **Dancing on the Edge**
- 8:00 (7:00 MT) **Masterpiece Endeavour**
- 9:30 (8:30 MT) **The Tunnel**
- 10:30 (9:30 MT) **Finding Elizabeth's Soldiers**
- 11:00 (10:00 MT) **Globe Trekker**
- Midnight (11:00 MT) **Washington Week**

SDPB2

- 6:00 (5:00 MT) **Great Conversations David Boies & Jeffrey Toobin**
- 7:00 (6:00 MT) **Nature Animal Homes: Animal Cities**
- 8:00 (7:00 MT) **Greeks Cavemen to Kings**
- 9:00 (8:00 MT) **Global Voices**
- 10:00 (9:00 MT) **Campaign**
- 11:00 (10:00 MT) **Nature Animal Homes: Animal Cities**
- Midnight (11:00 MT) **Greeks Cavemen to Kings**

MONDAY – JUNE 27

SDPB1

- 6:00 (5:00 MT) **PBS NewsHour**
- 7:00 (6:00 MT) **Antiques Roadshow Vintage New York**
- 8:00 (7:00 MT) **Antiques Roadshow Vintage Secaucus**
- 9:00 (8:00 MT) **POV The Look of Silence**
- 11:00 (10:00 MT) **Charlie Rose**
- Midnight (11:00 MT) **Tavis Smiley**

SDPB2

- 6:00 (5:00 MT) **National Parks: America's Best Idea**
- 8:00 (7:00 MT) **Local USA Sense of Place**
- 9:00 (8:00 MT) **PBS NewsHour**
- 10:00 (9:00 MT) **Nightly Business Report**
- 10:30 (9:30 MT) **Religion & Ethics Newsweekly**
- 11:00 (10:00 MT) **National Parks: America's Best Idea**

TUESDAY – JUNE 28

SDPB1

- 6:00 (5:00 MT) **PBS NewsHour**
- 7:00 (6:00 MT) **Genealogy Roadshow Los Angeles**
- 8:00 (7:00 MT) **Greeks The Good Strife**
- 9:00 (8:00 MT) **Frontline Policing the Police**
- 10:00 (9:00 MT) **Keeping Up Appearances**
- 10:30 (9:30 MT) **BBC World News**

- 11:00 (10:00 MT) **Charlie Rose**
- Midnight (11:00 MT) **Point Taken**

SDPB2

- 6:00 (5:00 MT) **Not Yet Begun to Fight**
- 7:00 (6:00 MT) **America ReFramed Buried Above Ground**
- 8:30 (7:30 MT) **Committee**
- 9:00 (8:00 MT) **PBS NewsHour**
- 10:00 (9:00 MT) **Nightly Business Report**
- 10:30 (9:30 MT) **Global 3000**
- 11:00 (10:00 MT) **America ReFramed Buried Above Ground**

WEDNESDAY – JUNE 29

SDPB1

- 6:00 (5:00 MT) **PBS NewsHour**
- 7:00 (6:00 MT) **Supernature: Wild Flyers Defying Gravity**
- 8:00 (7:00 MT) **NOVA Making North America: Origins**
- 9:00 (8:00 MT) **9 Months That Made You The First 8 Weeks**
- 10:00 (9:00 MT) **Vicious**
- 10:30 (9:30 MT) **BBC World News**
- 11:00 (10:00 MT) **Charlie Rose**
- Midnight (11:00 MT) **Tavis Smiley**

SDPB2

- 6:00 (5:00 MT) **POV The Look of Silence**
- 8:00 (7:00 MT) **Frontline Policing the Police**
- 9:00 (8:00 MT) **PBS NewsHour**

- 10:00 (9:00 MT) **Nightly Business Report**
- 10:30 (9:30 MT) **Focus on Europe**
- 11:00 (10:00 MT) **POV The Look of Silence**

THURSDAY – JUNE 30

SDPB1

- 6:00 (5:00 MT) **PBS NewsHour**
- 7:00 (6:00 MT) **On Call**  *The Human-Animal Disease Connection*
- 8:00 (7:00 MT) **Dakota Life**  *Sustainable Trends*
- 8:30 (7:30 MT) **Dakota Life**  *Museums, Relics & Heritage*
- 9:00 (8:00 MT) **Doc Martin**
- 10:00 (9:00 MT) **Detectorists**
- 10:30 (9:30 MT) **BBC World News**
- 11:00 (10:00 MT) **Charlie Rose**
- Midnight (11:00 MT) **Tavis Smiley**

SDPB2

- 6:00 (5:00 MT) **NOVA Making North America: Origins**
- 7:00 (6:00 MT) **9 Months That Made You The First 8 Weeks**
- 8:00 (7:00 MT) **Time Scanners**
- 9:00 (8:00 MT) **PBS NewsHour**
- 10:00 (9:00 MT) **Nightly Business Report**
- 10:30 (9:30 MT) **Scully/The World Show**
- 11:00 (10:00 MT) **NOVA Making North America: Origins**
- Midnight (11:00 MT) **9 Months That Made You The First 8 Weeks**



Photo: BBC

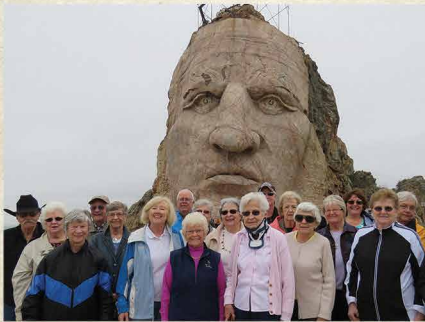
On **9 Months That Made You**, discover the thrilling story of how you were made, from the moment of conception to the moment of birth 280 days later. Follow the gestation process, the most exquisite biological choreography found in nature. Using the latest research and advances in medicine, we can reveal this hidden world in forensic detail. Zeroing in on milestones along the road to creation--where critical events can change your life.

SDPB1: Wednesday, June 29, 9pm (8 MT)

SDPB2: Thursday, June 30, 7pm (6 MT)



**No matter our age,
we never lose our *spirit*
and *zest* for life**



Planning your future is as easy as making one call to **Westhills Village**. Set your goals on a lifestyle you can enjoy in a **community designed around your wishes**. The Westhills Village waiting list is designed to make sure we're ready for you when you're ready for us. Whether it's **playing cards, watching a movie, sharing a cup of coffee, a hiking excursion in the Hills, or simply having dinner with new friends**, Westhills offers many possibilities for engaging social opportunities. Think of Westhills Village as a little slice of heaven right here in your hometown. You can look forward to a **lifestyle of comfort** where a professional staff takes care of all the details.



225 Texas Street
Rapid City, SD 57701
(605) 342-0255

westhillsvillage.com



Grace Day visits her alma mater.

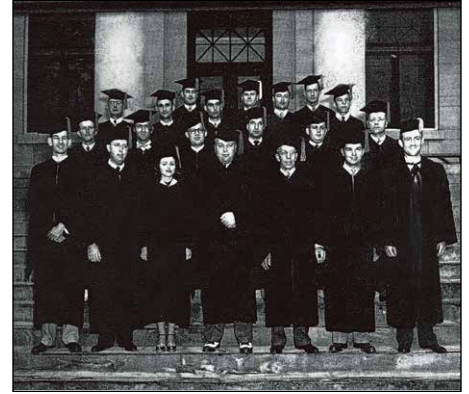
Photo: Heather McMichael

Amazing Grace: Legal Pioneer

Amazing Grace, a new documentary premiering this month, profiles Grace Steinberg Day – the lone woman among 175 men attending the University of South Dakota Law School in the late 1940s.

Enduring taunts and unwanted “whisker rubs” from male classmates, 19-year-old Day attended law school during an era when many fellows came to campus on the GI Bill. “It was well-known around campus that any woman who started law school was not going to be there long,” says Day. “She’d get flunked out.” Bucking trends in a style that would become her fashion, Day graduated one semester ahead of schedule.

Post-graduation, Day faced similar resistance to female lawyers in the professional world. “There wasn’t acceptance of women in the school and then there wasn’t acceptance in the practice,” says Day. When law firms refused to hire her based on her gender, Day started her own practice in Missouri, where she and her husband raised their children. She became an expert in family law when divorce courts routinely awarded women custody of children and little else. Day retired in her late 80s but today at 90 continues to



Grace Day (bottom row, 3rd from left) on graduation day, 1949.

work as a court-appointed volunteer representing children in divorce and custody cases. “With divorce and custody there is so much at stake,” says Day. “Some people treat it so lightly, but it takes a lot of doing and thinking. There are so many problems to resolve. So much is at stake. You are affecting the whole lifetime of a child.”

Amazing Grace airs Thursday, June 16 at 8:30pm (7:30 MT) and Sunday June 19 at 1:30 pm (12:30 MT) on SDPB1.

And tune in when host Lori Walsh interviews Grace Day on **Dakota Middy**, Thursday, June 16 at noon (11 MT) on SDPB Radio.



Grace Day at USD in 1949.

Special Broadcast: Eyes on the Prize

Educators and appreciators of PBS’s landmark **Eyes on the Prize** series will want to set devices to record as SDPB1 rebroadcasts the 14-hour series in its entirety this summer. The program, which spans over three decades of African American history, will air Saturdays at 4am (3 MT) starting June 4.

Educators around the country have used **Eyes on the Prize** to teach civil rights history since the series debuted in the 1980s. Find a rich digital resource of **Eyes on the Prize** classroom activities, lesson plans and printable study guides for elementary, middle and high school teachers at sdpbne.ws/sdpbEyesOnThePrize.



Photo: PBS

Governor’s Ag Summit

SDPB.org webcasts the 2016 South Dakota Governor’s Agricultural Summit from the Swiftel Center in Brookings, June 2 beginning at 7:30am CT. Tune in for panels on policy, weather, and producers as well as Governor Daugaard’s State of Agriculture keynote address. Log on at SDPB.org/live.

SDPB NEWS WINS SEVEN

EDWARD R. MURROW AWARDS

SDPB is pleased to announce SDPB Radio News has won seven regional Edward R. Murrow Awards.

The following reporters and news stories are recipients of the awards:

- **Newscast** – Gary Ellenbolt & Kealey Bultena for “Noon Newscast for September, 30, 2015.” Live coverage of shooting at Harrisburg (SD) High School.
- **Continuing Coverage** – Victoria Wicks for “Keystone XL Pipeline in South Dakota.” Nearly 40 stories following the KXL permitting process through 2015.
- **Feature Reporting** – Jim Kent for “Take to the Skies in a B-17 with WWII Pilot Chuck Childs.”
- **Sports Reporting** – Gary Ellenbolt for “State’s Smaller Schools Find Difficulty Fielding Football Teams.”
- **Use of Sound** – Charles Michael Ray for “50 Years of Buffalo, Adrenalin and Bullwhips.”
- **Writing** – Victoria Wicks for “Juveniles No Longer Face Mandatory Life without Parole: Retroactivity Still at Issue.”
- **Overall Excellence** – SDPB Radio News staff for newscast and stories within 40-minute time limit.

The Radio Television Digital News Association has been honoring outstanding achievements in electronic journalism with the Edward R. Murrow Awards since 1971. Murrow’s pursuit of excellence in journalism embodies the spirit of the awards that carry his name. Murrow Award recipients demonstrate the spirit of excellence that Edward R. Murrow made a standard for the broadcast news profession.

Links to the winning stories can be found at SDPB.org.



SDPB covers South Dakota High School sports championships.



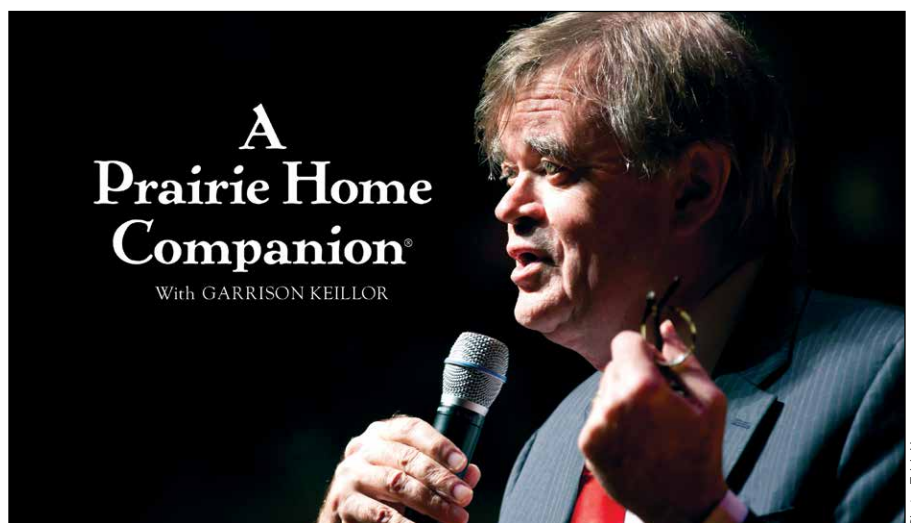
SDPB and delighted spectators follow the Custer State Park Buffalo Round Up every year. 2015 marked the 50th anniversary of the annual event.

RADIO	WEEKDAYS	SATURDAYS	SUNDAYS		
5am / 4 MT	Morning Edition NPR news. Star Date 9am (8 MT)	BBC World Service Overnight.	BBC World Service Overnight.		
5:30/4:30 MT		The People's Pharmacy Health news & alternatives.	TED Radio Hour Ideas, inventions and original thinking.		
6am / 5 MT		Weekend Edition News and features from NPR.	Weekend Edition News and features from NPR.		
6:30/5:30 MT					
7am / 6 MT		Morning Classics with Owen DeJong ▼ "South Dakota Season Ticket" w/ local performance on Wed. "Request Day" on Fridays.	The Best of Car Talk Real advice, zany hosts.	Krista Tippett on Being Philosophical discussions.	
7:30/6:30 MT			Wait, Wait ... Don't Tell Me! Trivia, humor from week's news.	Travel with Rick Steves America's top travel expert.	
8am / 7 MT			This American Life Portraits of all kinds of Americans.	America's Test Kitchen Recipes, tips, and information.	
8:30/7:30 MT			Radiolab Science and life.	A Prairie Home Companion Garrison Keillor with music, humor, skits and more.	
9am / 8 MT					
9:30/8:30 MT	Dakota MIDDAY ▼ "Computer Guys" & "Innovation" on Fridays.	TED Radio Hour Ideas, inventions and original thinking.	Wait, Wait ... Don't Tell Me! Trivia, humor from week's news.		
10am / 9 MT		Ask Me Another Test your wits in this lively quiz show.	On the Media News analysis and journalistic journeys.		
10:30/9:30 MT	Here & Now Mondays-Thursdays News, features, conversations and more from NPR.	The Dinner Party Download Pop culture, food & conversation.	All Things Considered NPR		
11am / 10 MT		All Things Considered NPR			
11:30/10:30MT	Science Friday on Fridays.	All Things Considered NPR	Fresh Air Weekend Best features from the week.		
Noon / 11 MT					
12:30/11:30MT	PRI's The World Global news.	A Prairie Home Companion Garrison Keillor with music, humor, skits and more.	Radiolab Science and life.		
1pm / Noon MT		All Things Considered NPR National Native News 4:30 (3:30 MT)	American Routes Roots music, stories behind sounds/ artists.	This American Life Portraits of all kinds of Americans.	
12:30/11:30MT					
1:30/12:30 MT	Marketplace	No Cover, No Minimum Radio ▼ South Dakota performance.	The Moth Radio Hour Compelling real-life stories.		
2pm / 1 MT					
2:30/1:30 MT	Fresh Air with Terry Gross Celeb, newsmaker interviews.	On Record with Matt Weesner ▼ Adult alternative music.	Big Band Spotlight with Karl Gehrke ▼ Music of '30s & '40s.		
3pm / 2 MT					
3:30/2:30 MT	Jazz Nightly with Karl Gehrke ▼ Karl features jazz artists & styles, as well as South Dakota Jazz Stars.	On Record with Matt Weesner ▼ Adult alternative music.	Jazz Nightly Extra ▼ More jazz from SDPB's vast library.		
4pm / 3 MT					
4:30/3:30 MT				World Café Music from around the globe.	No Cover, No Minimum Radio ▼ South Dakota performance.
5pm / 4 MT					
5:30/4:30 MT				BBC World Service Overnight.	BBC World Service Overnight.
6pm / 5 MT					
6:30/5:30 MT	BBC World Service Overnight.	BBC World Service Overnight.			
7pm / 6 MT					
7:30/6:30 MT	BBC World Service Overnight.	BBC World Service Overnight.			
8pm / 7 MT					
8:30/7:30 MT	BBC World Service Overnight.	BBC World Service Overnight.			
9pm / 8 MT					
9:30/8:30 MT	BBC World Service Overnight.	BBC World Service Overnight.			
10pm / 9 MT					
10:30/9:30 MT	BBC World Service Overnight.	BBC World Service Overnight.			
11pm / 10 MT					
11:30/10:30MT	BBC World Service Overnight.	BBC World Service Overnight.			
Mid. / 11 MT					
12:30/11:30MT	BBC World Service Overnight.	BBC World Service Overnight.			
1am / Mid. MT					

A Prairie Home Listening Party

Gather your friends and throw a listening party to commemorate Garrison Keillor's last two shows as host of **A Prairie Home Companion**. Before Keillor passes the torch to new host Chris Thile, he'll mark the end of an era with two special send-offs as APHC broadcasts live from Tanglewood, summer home of the Boston Symphony Orchestra, on Saturday, June 25 at 5pm (4 MT). His final show airs live from the Hollywood Bowl in Los Angeles on Saturday, July 2, at 5pm (4 MT).

The Tanglewood show will also be webcast so you and your party can watch live at SDPB.org. Suggested party menu? Ketchup and Powdermilk Biscuits, of course!



Garrison Keillor.

Photo: Erick Hagness

Filming Begins: Drawing Series with Dick Termes

With major funding from Rapid City-based John T. Vucurevich Foundation, SDPB has begun filming a video series featuring art lessons from internationally acclaimed artist Dick Termes. **The Basic Elements of Drawing: From Simple to Complex** is a multi-part series designed to teach basic drawing skills. The series is currently being filmed on-location at the Termesphere Gallery, Termes' geodesic dome studio in Spearfish. Termes is best known for his "Termespheres" – large, colorful spheres painted in six-point perspective that rotate to produce the illusion of perfect proportion.

The new video series is designed specifically for beginning artists of all ages. Surrounded by his signature orbs and armed with a Sharpie and an easel pad, Termes guides students through the creation of cubes, cylinders, and spheres while demonstrating techniques for turning basic shapes into life-like images. The series also combines animation with Termes' instruction in basic line drawing, contour surface lines, and shading techniques – all in accessible, easy-to-understand terms.



SDPB filming in Dick Termes' studio.

To accompany the new video series, SDPB's Online and Education Department is developing a teacher's guide, lesson plans, and activity ideas which will be accessible at SDPB.org and PBS LearningMedia. Further plans for the series include teacher trainings at education conferences throughout the state as well as instruction at centers for older adults.

The planned premiere for **The Basic Elements of Drawing: From Simple to Complex** is January, 2017.

Major funding for the project comes from

the John T. Vucurevich Foundation. Other donors include:

Pioneer Bank & Trust and F. L. Clarkson Family Fund, Wells Fargo-Spearfish, Rand and Gayla Williams, Yvonne and Gene Ficek, Best Western Black Hills Lodge, Everette and Joann Follette, Ben and Carol Henry, Jim and Katie Hood, Kay Jorgensen, Harvey Krautschun, Anita McCord and Tom Keiner, Tom Matthews, Robert and Linda Meyer, Dr. Kathleen Parrow, and Elizabeth Smock, Spearfish. Also, Nancy and Steve Babbitt, Marrelyce Seaman and Karen Miller of Rapid City; Kathleen and Norman West of Yankton; Rod and Glenna Fouberg of Aberdeen, and Stephen and Judy Haas of Hermosa.



High School Golf: On Par with the Champions

Tee off when SDPB.org uploads photos and results from the South Dakota High School Girls Class AA, A and B and Boys Class B Golf championship meets, **June 6-7, 2016**. For photos and results check out SDPB.org/golf or follow the conversation at [#SDGolf16](https://twitter.com/SDGolf16).

Boys Class B - Hart Ranch Golf Course, Rapid City

Girls Class AA - Lakeview Golf Course, Mitchell

Girls Class A - Southern Hills Golf Course, Hot Springs

Girls Class B - Elks Golf Course, Rapid City

Thank You for Your Gifts to Friends of SDPB

Friends of SDPB has received the following gifts:

Lavonne Peterson of Aberdeen provided a gift in memory of her husband, Harold Peterson.

Dennis & Maxine Johnston, Pierre, gave a gift in memory of Carolyn L. Green.

New Visionary Society members:

Gene & Melinda Ellenson, Huron Anonymous, Rapid City

Heritage Circle:

Catherine G. Ratliff, Hot Springs
Norman Christensen, Milbank
Anonymous, Rapid City

Thank you. We are grateful for your generous support.

To learn how you can support SDPB with your gifts, please call Friends of SDPB at 800-333-0789.

Calling all SDPB Kids and Families!



Kids making bird feeders for their feathered friends.



Join SDPB at the Peach Festival, June 25-26, for two days of fun!



See Science Steve on June 11 at the It's All About Science Festival.

Explore the outdoors with SDPB this month. SDPB will be at the following events:

Saturday, June 11 – Outdoor University, Pierre, presented by SD Game, Fish & Parks Outdoor Campus.

Saturday, June 25 & Sunday, June 26 – South Dakota Peach Festival, Yankton Trail Park, Sioux Falls. Buddy the SDPB Bird will be along too!

Activities include:

- Learn how to identify South Dakota birds and birdcalls
- Make fun, simple bird feeders
- Color your favorite PBS KIDS character
- Grab a goody bag

We'll also be at the 605 Summer Classic, Friday, June 24 and Saturday, June 25, Cherapa Place, Sioux Falls. Stop by and say hi and register for fun give-aways.

See Science Steve on Saturday, June 11 - Join Steve in Sioux Falls at the It's All About Science Festival, in the Sanford Research Center.

Science Steve will also be at Science Happy Hour in Sioux Falls, June 10, and at the Yankton Public Library, June 29.



Stop by and visit SDPB at the 605 Summer Classic, June 24-25.

Friends of SDPB National Parks of America Tour September 02 – September 14, 2016 • 13 Days • 17 Meals

Travel with fellow public media lovers and experience the grandeur of the American West as you explore five fantastic national parks on this exciting journey.

Relish overnight stays in a lodge nestled in the heart of Yellowstone and in a National Historic Landmark inside the Grand Canyon. Enjoy a breakfast cruise on Lake Powell in Arizona. Marvel at the magnitude and color of Zion's cliffs. Enjoy two-night stays in Salt Lake City, Springdale and Jackson Hole. Drive through the incredible Bighorn Mountains and beautiful Black Hills en route to Mt. Rushmore and Crazy Horse Monument.

Highlights include: Scottsdale,



Visit amazing national parks like the Grand Canyon with your fellow South Dakotans.

Lake Powell, Grand Canyon, Bryce Canyon, Zion, Salt Lake City, Grand Teton & Yellowstone National Parks, Old Faithful, Sheridan, Bighorn Mountains, Mount Rushmore, Crazy Horse Memorial.

Pricing: Double / \$4,299pp
Single / \$5,699pp
Triple \$4,249pp

* Included in Price: Round Trip Air from Joe Foss Field, Air Taxes and Fees/Surcharges, Hotel Transfers

* Not Included in Price: Cancellation Waiver and Insurance of \$240 per person

For more information, contact **Pam Pfeifer** (605)271-0140 / ptpfeifer@aol.com

Corporate Support *Our corporate partners continue to support the excellent Television and Radio programming you have come to expect and love from SDPB.*

Aberdeen Parks, Recreation & Forestry Department	Dacotah Prairie Museum—Granary Rural Cultural Center	Paul Horsted, Dakota Photographic, LLC	Presentation Sisters of Aberdeen Puetz Corporation	South Dakota State Historical Society
Abourezk Law Firm	Dakota Plains New Holland	Horton Incorporated	Quilters Headquarters	South Dakota State Quilt Guild
Acupuncture 4 Health	Dakota State University	Howes Oil	Rapid City Arts Council	South Dakota State University
All Souls Church	Daktronics	Hy-Vee Food Stores	Regional Health	South Dakota State University Continuing & Distance Education
ArtForms Gallery	Davenport Evans Lawyers	IFAM Capital	Reptile Gardens	South Dakota State University Foundation – Woodbine Productions
Arts Rapid City	Deadwood History (Adams Museum & House/Days of '76/Adams Research & Cultural Center)	Independent Insurance Agents of SD	Rocklands Entertainment	South Dakota State University Foundation – Woodbine Productions
Associated General Contractors of South Dakota	Delta Dental of South Dakota	Ingalls Homestead	Dr. Aaron Rumpca, Murdo Dental	South Dakota State University Foundation – Woodbine Productions
Avera Health	DeMersseman, Jensen, Tellinghuisen & Huffman, LLP	Inside Out	Sanford Health	South Dakota State University Foundation – Woodbine Productions
BankWest	East River Electric Power Cooperative	Interim HealthCare	SDN Communications	South Dakota State University Foundation – Woodbine Productions
Bay Leaf Café	Emmanuel Episcopal Church	Jim Szana Trio	Sioux Falls Area Community Foundation	South Dakota State University Foundation – Woodbine Productions
Bethesda	Estes Campbell Law	Jolly Lane Greenhouse (The) Journey Museum	Sioux Falls Seminary	South Dakota State University Foundation – Woodbine Productions
Black Hills Area Community Foundation	Exceptional Artists	Keller Williams Realty – Jeff Nelson	Siouxland Museums	South Dakota State University Foundation – Woodbine Productions
Black Hills Blues Society	Family Dentistry of Sioux Falls	Koch Hazard Architects	South Dakota Affiliate of the American College of Nurse Midwives	South Dakota State University Foundation – Woodbine Productions
Black Hills Federal Credit Union	Farmers Union Insurance Companies	Landscape Garden Centers	South Dakota Agricultural Heritage Museum	South Dakota State University Foundation – Woodbine Productions
Black Hills Film Festival	First Bank and Trust	Lamps and Shades	South Dakota Art Museum	South Dakota State University Foundation – Woodbine Productions
Black Hills Playhouse	First Dakota National Bank	LIW Pageant Society	South Dakota Arts Council	South Dakota State University Foundation – Woodbine Productions
Black Hills State University	Fischer, Rounds & Associates	Madison Farmers Elevator	South Dakota Bar Foundation	South Dakota State University Foundation – Woodbine Productions
Black Hills Symphony	Flooring America	Mahlander's	South Dakota Community Foundation	South Dakota State University Foundation – Woodbine Productions
Black Hills Unitarian Universalist Fellowship	Four Seasons Fabric	Main Street Market	South Dakota Corn	South Dakota State University Foundation – Woodbine Productions
Bursch Travel	Friends of Aberdeen University/Civic Symphony	McCrory Gardens	South Dakota Crop Improvement Association	South Dakota State University Foundation – Woodbine Productions
Bush Foundation	Freedom Forum	Media One Advertising	South Dakota Film Festival	South Dakota State University Foundation – Woodbine Productions
Capital Services	Gene Hufford Agency, Inc.	Missouri River Energy Services	South Dakota Humanities Council	South Dakota State University Foundation – Woodbine Productions
Catholic United Financial	Great Plains Zoo & Delbridge Museum	National Music Museum	South Dakota Space Grant Consortium	South Dakota State University Foundation – Woodbine Productions
(The) Center for Western Studies	Chet Groseclose, Prof. LLC	North County Fiber Fair	South Dakota Speech-Language-Hearing Association	South Dakota State University Foundation – Woodbine Productions
Children's Museum of South Dakota	Hands Around the World	Northern State University	South Dakota State Fair	South Dakota State University Foundation – Woodbine Productions
CO-OP Architecture	Hill City Arts Council	NorthWestern Energy		South Dakota State University Foundation – Woodbine Productions
Credit Union Association of the Dakotas	Home Federal Bank	Ophthalmology Associates		South Dakota State University Foundation – Woodbine Productions
Dacotah Bank		Ophthalmology LTD		South Dakota State University Foundation – Woodbine Productions
		Orlando Chamber Soloists		South Dakota State University Foundation – Woodbine Productions
		Pathway Investment		South Dakota State University Foundation – Woodbine Productions
		Prairie Repertory Theatre		South Dakota State University Foundation – Woodbine Productions

**Join us in telling South Dakota's stories.
Be an underwriter.**

Contact the Corporate Development Manager nearest you.

Michele Slott, West River
800-456-1266

Liz Larkin, East River
800-456-0556



Volume 47 No. 6

Friends of SDPB Office

PO Box 5000
Brookings, SD 57006
(605) 688-4191 or (800) 333-0789

Ryan Howlett, Friends CEO
(800) 456-0556

SDPB Administrative Office

PO Box 5000
Vermillion, SD 57069
(605) 677-5861 or (800) 456-0766

SDPB Home Page

<http://www.SDPB.org>
press@SDPB.org

SDPB Magazine & Promotion Staff

Katy Beem, Editor
Matti Smith, Marketing Manager
Amber Anders, Continuity Director
Dave Foote, Promotion Producer
Michael Zimny, Social Media
Kara Brodsky, Marketing Intern
James Hagedorn, Marketing Intern

Friends of SDPB Board

President Daniel Leikvold, Lead
Vice President Janelle Krause Toman, Pierre
Tom Manzer, Treasurer, Brookings
Greg Blomberg, Secretary, Sioux Falls
Wayne Carney, Fort Pierre
Malcom "Chap" Chapman, Rapid City
Scott German, Peever
Thomas E. Graslie, Rapid City
Marcia Hendrickson, Chancellor
Rebecca Jirava, Brookings
Lizabeth Manning, Spearfish
Katrina Lehr-McKinney, Sioux Falls
Waneen Polly, Watertown
Prof. Tim Schorn, Vermillion
John Charles Sternquist, Yankton
Cheryl Eagan Taylor, Sioux Falls
South Dakota Educational Telecommunications Board
Mark Shlanta, Chair, Sioux Falls
Doyle Estes, Hill City
Kay Jorgensen, Spearfish
Rick Knobe, Sioux Falls
Julie Mathiesen, Sturgis
Gerry Schlenker, Canistota
Michael G. Rush, Regents, Pierre
Julie Overgaard, SDPB, Vermillion
David Zolnowsky, BIT, Pierre

SDPB Management Team

Julie Overgaard, Executive Director
Larry Rohrer, Director of Content
SeVern Ashes, Engineering Director
Bob Bosse, Television Director
Cara Hetland, Radio Director
Fritz Miller, Marketing Director
Kent Osborne, Online Director
Charles Michael Ray, News Director

– South Dakota Public Broadcasting is a division of the South Dakota Bureau of Information and Telecommunications.

– Friends of SDPB is a 501(c)3 organization.
– SDPB Magazine is printed by Midstates Printing, Aberdeen, SD. Approximately 14,500 copies of the document were printed at an approximate cost of \$.36 per copy. SDPB Magazine (ISSN 1529-1596) is published and mailed monthly for \$10 per year for Friends of SDPB, 815 Medary, Brookings, SD 57006. Periodical postage paid at Brookings, SD, and additional mailing offices.

Postmaster: Send address changes to Friends of SDPB, Box 5000, Brookings, SD 57006. USPS 0764-400





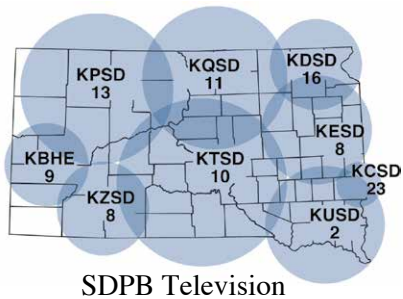
To see the world for the first time.
Again.

The world's most advanced cataract surgery.

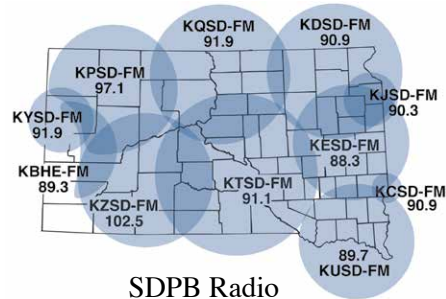
Memories old and new begin with beautiful vision. **ReLACS**, and don't miss them. **Refractive Laser-Assisted Cataract Surgery** combines the world's most advanced diagnostic, laser, and lens technology in a procedure that affects your vision for the rest of your life. Understanding your options to treat cataracts means confidence and clarity about your decision. So, if you suffer from compromised vision due to cataracts, **ReLACS**. Call to schedule an informative cataract consultation at Vance Thompson Vision.

(877) 522-3937
vancethompsonvision.com

VANCE THOMPSON
VISION



SDPB Television



SDPB Radio

Live and on-demand audio and video at SDPB.org



The number on the top of your address is your membership expiration date. The number on the left is your identification. Please use for membership renewals. This will reduce our processing time and speed up your service.

Printed on Recycled Paper



Photo: James Minchin

Josh Groban: Stages Live

SDPB1: Sunday, June 5 at 10pm (9 MT)

Singer-songwriter Josh Groban brings some of the most iconic songs in the Broadway musical songbook to life. Features hits from *Les Misérables*, *A Chorus Line*, a duet of "All I Ask of You" from *Phantom of the Opera* with Kelly Clarkson and many more.