

"Ice Fishing Sunset" - Waubay, SD
by Spencer Neuharth



SDPB

Magazine

April 2017



PICTURE *South Dakota* PHOTO CONTEST WINNERS

Inside: Our Favorite Local Tiny Desk Concert Contestants

MCCRORY GARDENS

tulPALCOZA 2017

Experience *spring* at South Dakota's
premiere

Botanical Garden.

Showcasing 8,500 tulips choreographed to bloom en masse
and 15,000 additional spring bulbs ready to unfurl throughout the
25 acres of our garden sanctuary.

April

Monday - Saturday 9am - 5pm

*Sunday 12pm - 5pm *when tulips are in bloom*

May - September

Monday - Saturday 9am - 8pm

Sunday 12pm - 6pm

*Visit our website or call for current hours and events.

Support

tulPALCOZA 2017

\$150 sponsorship
funds 300 tulips

within a 60 square foot plot.

McCrorryGardens.com

631 22nd Ave | Brookings, SD 57007 | 605-688-6707





STEALING THE SHOW

Back for a second, show-stopping year, SDPB presents area high school stars singing and dancing their way through the state **Show Choir** competitions. Eleven schools gather for glitter and glee at the Johnson Fine Arts Center at Northern State University in Aberdeen on April 8.

Watch SDPB Digital for center-stage photos and red carpet results as we update SDPB's Twitter, Facebook, and SDPB.org feeds at #SDShowChoir17.

Next, the **67th Annual South Dakota All-State Band Concert** brings more high school musical talent to SDPB's platforms. Recorded March 25 at the Lorang Theatre at Sioux Falls O'Gorman, the concert airs on SDPB1 Saturday, April 22, at 8pm (7 MT) and again on Sunday, April 23, at 2pm (1 MT).

The concert features high school musicians selected during competitive auditions held throughout the state in January. At each audition, four adjudicators evaluated students on the quality of their solos, scale techniques, and sight reading as well as a music terminology test.

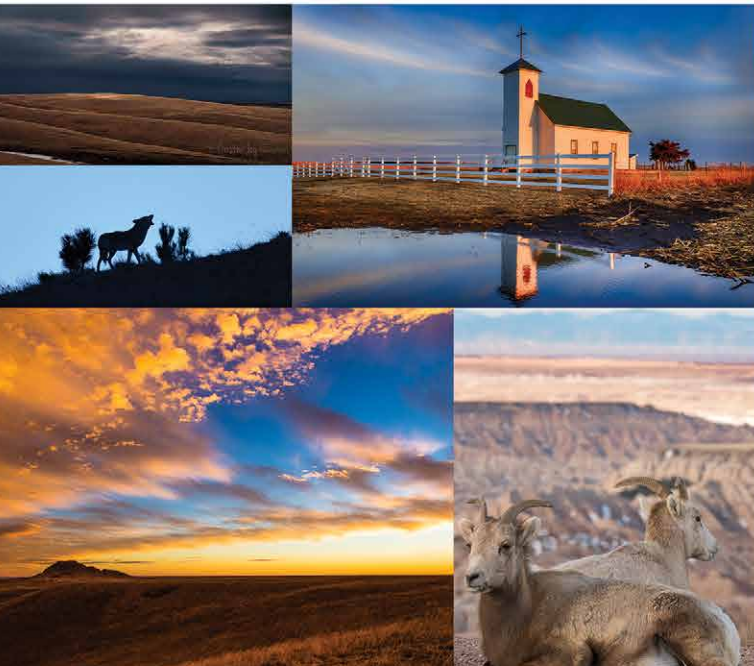
The resulting All-State Band Concert is comprised of selected students who are placed in two groups with two repertoires. Students work with guest conductors for three days to present the concert. This year, Dr. Elva Kaye Lance, Director of Bands and the Wind Ensemble at Mississippi State University, conducts the "Clark Band," while the "Lewis Band" is led by Dr. Myron Welch, emeritus professor and former director of bands at The University of Iowa where he also conducted the



Performers sing their hearts out at the State Show Choir Competition.

Symphony Band and Chamber Wind Ensemble.

Major sponsors of high school activities coverage include Dacotah Bank and SD Corn. Additional sponsors include SDN Communications, Independent Insurance Agents of South Dakota, SDSU and the SD Dept. of Education. And by Touchstone Energy, Sanford Health, and Lake Area Tech. And by Delta Dental, Dakota Plains New Holland, Fischer Rounds, Farmer's Union, Catholic United Financial and SD Ethanol.



SDPB'S 2017 PICTURE *South Dakota* PHOTO CONTEST

The results are in!

Professional and hobbyist photographers throughout the state captured captivating images of the people and places that make up South Dakota.

To see the winning photos, go to **SDPB.org/photocontest**.

Winners will be published in the 2018 Picture South Dakota Calendar.

SDPB'S FAVORITE LOCAL tiny desk concerts



by Katy Beem



Thank you, South Dakota music makers! You really represented!

This year, NPR received 22 videos from South Dakota musicians for the 2017 Tiny Desk Concert Contest. From Bison to Elk Point and many points between, you sang, strummed, and plucked your hearts out for a chance to perform live on NPR and tour nationally.

NPR judges gave the national nod to New Orleans group Tank and the Bangas for “Quick” – a funky soul/hip hop/rock jam. Back home, SDPB staffers chose a few home-grown Tiny Desk Concert favorites. We were soothed by Burlap Wolf King’s SoDakian serenade “Strawberries & Sage,” scooted our boots to Dear John Doe’s “I Woke Up Late,” loved the pure-hearted guitar of Heath Johnson and Shorthand Charlie, and grooved to the mellow garage rock of The Beards.

Below is a Q&A with some of our favorite area Tiny Deskers both new and familiar to local music fans.

The Darning Hearts

from *Rapid City*

Song: “Spoon”

The Darning Hearts are wife-and-husband NaTasha Lee Lewis and Dylan James Lewis. The duo are based in Rapid City, where NaTasha is an R.N. at Rapid City Regional Hospital, Dylan studies chemical engineering at SDSM&T, and they moonlight as bookers of DIY shows for local venues. Interestingly, the couple resides at Crystal Cave – a former tourist attraction now closed to the public.

How did you start performing?

Dylan: “I was inspired by the music of my uncle Rich who played old country music and my flatpicking idol Doc Watson, so I decided to submerge myself in bluegrass jam circles in the Black Hills when I was a teenager.”

NaTasha: “I started singing at fairs at the age of six to make Grandpa happy.”

How is performing in SD?

NaTasha: “The benefits of playing shows in South Dakota are that they are farther and fewer between than they are in other areas and people pay more attention to them than they do where music is over-saturated. People here tend to appreciate music more because of this. This can also be a challenge, but bands travelling through appreciate the energy as our music scene has not been over-saturated.”

Why did you choose to record “Spoon” for the contest?

Dylan: “Because we co-wrote it on our last tour and it has become one of our favorites to play ever since. It was also a song we haven’t recorded on any other videos yet.”

Describe your sound.

Dylan: “A mesh of folk, gypsy-jazz and bluegrass with a modern twist. I am influenced by too many to list here, but among the most important are Doc

Watson, Tony Rice, Hank Williams Sr., The Tallest Man on Earth, and Larry Keel.”

NaTasha: “I have an obsessive-compulsive harmonizing disorder and Dylan’s guitar is the only cure. I’m also just a sucker for old-timey things. I’m not calling Dylan old.”

What can the audience listen for to hear the influence of South Dakota in your songs?

Dylan: “Many of my songs are influenced by South Dakota. The landscape of the Black Hills and the experiences that I have here shape the lyrics of many of my songs. I sometimes write in nature as well. I reference South Dakota and the Black Hills in our songs “Liza Ray” and “Vines.” NaTasha and I co-wrote “Black Crow Sky” while making the drive between Newcastle, WY and Lead. I like to play the mandolin while riding in the car and compose songs

while on long road trips. NaTasha and I also get some of our best practicing in that way.”

What’s the story behind the name “The Darning Hearts”?

NaTasha: “The Darning Hearts symbolizes mending things that are broken instead of throwing them away. i.e. “darning socks” instead of buying new ones. This especially applies to relationships between people.”

At what Black Hills venues do you enjoy performing?

Dylan & Natasha: “1) House shows. We love playing and hosting house shows at our house or elsewhere. 2) Black Hills Vinyl because they have done so much to contribute to DIY, all-ages shows, which we really appreciate. We like to think of them as the West River version of Total Drag Records in Sioux Falls. 3) The Dahl Fine Arts Center because the staff there has been a big supporter of us and do a great job of promoting our shows. Also, it is a place where people sit down and really listen to the music. 4) It’s hard to stick to just a few because there are too many great venues to name out here including Miner Brewing Company, Killian’s Tavern, The Seed Theater, Main Street Square, and Pure Bean Coffee.”

What else do you want South Dakotans to know about you?

NaTasha: “Everywhere can have a music scene!! Take it out into nature! Make friends with your neighbors!”

Maddie Todd

from Sioux Falls Song: “Paradox”

Originally from Columbia, MO, singer-guitarist Maddie Todd studies Religion and Sociology at Augustana University. She got her musical start performing in church.

Describe your sound.

“My style of accompaniment is folk-rock, but vocally, I am more soulful. I’ve been told my voice resembles Loren North, Halsey, and Lauren Daigle. I love the ways in which artists like Julien Baker, Ryn Weaver and Halsey write music. They use metaphor to project emotion, which is

something I hope to do through my own songwriting.”

Are your songs influenced by South Dakota?

“The majority of my songs are influenced by people who have impacted me greatly. Obligatorily, a large portion is about South Dakotan people. In many ways, songwriting is a valuable and healthy means of making sense of things that don’t make sense to me. When I need to process something it most likely will become a song.”

How is performing in South Dakota?

“South Dakota has proved to be a very nurturing community. The people value live music. During the summer of 2016, I was overwhelmed with opportunities to perform at several locations in Sioux Falls, ranging from restaurants to the 605 Music Festival. The people of South Dakota have emboldened me to keep performing, and for that I will always be in their debt.”

Why did you choose your song “Paradox” for the Tiny Desk Concert?

“As a Religion and Sociology student, it’s impossible not to be perplexed by the way our country is responding to outsiders in need. It is so simple to allow fear to justify the dehumanization of people, which in turn makes it simpler to discriminate, ostracize, and speak prejudice against them. The recent actions of America’s executive branch of government, in my opinion, have proven exactly this. ‘Paradox’ is not only a way to express my desire to make sense of the seemingly chaotic decisions made by America’s leadership, but also to infuse humanity back into a very controversial area. At the end of the day, people are people.”

The Nesters

from Perkins County & Spearfish

Song: “Cowboss”

Mutual fans even before they met, Americana/plains folkies Eliza Blue and Jami Lynn formed The Nesters after convening musically to see where playing together would lead.

Do you get out and perform as

The Nesters or is it more an intimate, creative collaboration?

“Both! Eliza just had a baby in December, so after playing a few shows last summer and fall, we took a little break. We are starting to play out again now, and even have a few short tours in the works.”

Tell us how the song and the video for “Cowboss” came about.

“We knew a barn would be a great place to film since the song is set in a barn, and we also thought it was a very appropriate location for a South Dakota group. Of course, the day we got together to do it, the temperature was barely above zero, and the barn is not heated. Fortunately, we are pretty tough – especially Jami, since she had to go mitten-less to play the banjo part.”

Yours is a long-distance musical relationship. How do you stay in creative communication?

“Email, texts, and the old fashion standby of getting together around the kitchen table to chat and play. We send each other voice memo song ideas a lot too.”

Do you two ever sit around and sing for fun – just harmonize together for no other reason than you can and you sound beautiful together?

“Not as much as we’d like! But it sure is fun when we can.”

Will you be performing as The Nesters or individually anywhere this spring or summer?

“The Nesters will be in Minneapolis at the Warming House on April 8th, and playing the Canyon Acoustic Series in Spearfish, August 2. There will be more dates on the calendar soon. We are also both playing in and around Black Hills with our solo work, and Jami will be performing the part of Billie Holiday with the JAS Quintet in Sioux Falls, May 11 & 12.”

Any new albums coming out?

“Eliza is currently recording a solo album of original material, and Jami Lynn is recording an album of jazz standards this summer, but we are plotting something for The Nesters as well!”

Watch all the South Dakota entries for the NPR Tiny Desk Concert Contest on SDPB’s Living Blog: SDPB.org/blogs/arts-and-culture/ 🐦

SDPB-TV Daytime Programming

Primetime listings on pages 8-15


SDPB1	WEEKDAYS	SATURDAYS	SUNDAYS
5am / 4 MT	Newsline	Beads, Baubles & Jewels	Dakota Life ▼
5:30 / 4:30 MT	Fitness program	Dakota Life ▼	Dinosaur Train
6am / 5 MT	BBC World News	Daniel Tiger's Neighborhood	Sesame Street
6:30 / 5:30 MT	Ready Jet Go!	Caillou	Daniel Tiger's Neighborhood
7am / 6 MT	Nature Cat	Splash and Bubbles	Splash and Bubbles
7:30 / 6:30 MT	Curious George	Curious George	Curious George
8am / 7 MT	Daniel Tiger's Neighborhood	Nature Cat	Nature Cat
8:30 / 7:30 MT	Daniel Tiger's Neighborhood	Ready Jet Go!	Ready Jet Go!
9am / 8 MT	Arthur	Clifford the Big Red Dog	Sid the Science Kid
9:30 / 8:30 MT	Cat in the Hat Knows a Lot About That	Bob the Builder	WordGirl
10am / 9 MT	Dinosaur Train	Fons & Porter's Love of Quilting	Wild Kratts
10:30 / 9:30 MT	Peg + Cat	Fresh Quilting	On Call ▼
11am / 10 MT	Super Why!	Quilt in a Day	
11:30/10:30MT	Thomas & Friends	Sewing with Nancy	Market to Market
Noon / 11 MT	Sesame Street	It's Sew Easy	Various
12:30 / 11:30MT	Dinosaur Train	Rough Cut – Woodworking	Motorweek
1pm / Noon MT	Splash and Bubbles	Woodsmith Shop	Repeat of previous Thursday 8pm (7 MT)
1:30 / 12:30 MT	Curious George	This Old House Hour	
2pm / 1 MT	Educational Program		
2:30 / 1:30 MT	Ready Jet Go!	Chef's Life	Documentary, news, science, nature (see listings online at SDPB.org/TVSchedules)
3pm / 2 MT	Nature Cat	America's Test Kitchen	
3:30 / 2:30MT	Odd Squad	The Mind of a Chef	
4pm / 3 MT	Wild Kratts	Garden Smart	Rick Steves' Europe
4:30 / 3:30 MT	Cyberchase	America's Heartland	Nature Adventures ▼
5pm / 4 MT	Martha Speaks		
5:30 / 4:30 MT	Nightly Business Report	Classic Gospel	Antiques Roadshow

SDPB2	MONDAYS	TUESDAYS	WEDNESDAYS	THURSDAYS	FRIDAYS	SATURDAYS	SUNDAYS						
5am / 4 MT	Overheard w/ Smith	Global 3000	To the Contrary	Scully/World Show	Well Read	Second Opinion	To the Contrary						
5:30 / 4:30 MT	Open Mind	Focus on Europe	American Forum	Second Opinion	Closer to Truth	Wealthtrack	Washington Week						
6am / 5 MT	Newsroom Tokyo	Newsroom Tokyo	Newsroom Tokyo	Newsroom Tokyo	Newsroom Tokyo	To the Contrary	Scully/World Show						
6:30 / 5:30 MT						Washington Week	Open Mind						
7am / 6 MT	Various history, documentary, news, science & nature.	Various history, documentary, news, science & nature.	Various history, documentary, news, science & nature.	Various history, documentary, news, science & nature.	Various history, documentary, news, science & nature.	Various history, documentary, news, science & nature.	Focus on Europe						
7:30 / 6:30 MT							Global 3000						
8am / 7 MT							America ReFramed						
8:30 / 7:30 MT													
9am / 8 MT													
9:30 / 8:30 MT							Wealthtrack						
10am / 9 MT							Second Opinion						
10:30 / 9:30 MT							Various history, documentary & public affairs programming.	Various history, documentary, news, science & nature.					
11am / 10 MT									On Call ▼	Tavis Smiley	Tavis Smiley / SD Focus ▼	Tavis Smiley	Tavis Smiley
11:30 / 10:30MT									Overheard w/ Smith	Global 3000	To the Contrary	Scully/World Show	Well Read
Noon / 11 MT	Open Mind	Focus on Europe	American Forum	Second Opinion	Closer to Truth								
12:30 / 11:30MT	Documentary, news & science.	Documentary, news & science.	Documentary, news & science.	Documentary, news & science.	Documentary, news & science.	Various history, documentary & public affairs programming.			To the Contrary				
1pm / Noon MT									Washington Week				
1:30 / 12:30 MT									American Forum				
2pm / 1 MT									Open Mind				
2:30 / 1:30 MT									Focus on Europe				
3pm / 2 MT									Global 3000				
3:30 / 2:30MT							South Dakota Focus ▼	Newsline	Newsline	Newsline	Newsline	To the Contrary	SDPB Documentary
4pm / 3 MT							DW News	DW News	DW News	DW News	DW News	Washington Week	& various
4:30 / 3:30 MT	Life on the Line	Documentary	Documentary	Documentary	Documentary	Documentary	PBS NewsHour						
5pm / 4 MT							PBS NewsHour						
5:30 / 4:30 MT							On Story	Charlie Rose	Documentary				

Create – SDPB3 Programming

	SDPB3	SUNDAY & WEDNESDAY	MONDAY & FRIDAY	TUESDAY & THURSDAY	SATURDAY THEME DAYS		
OVERNIGHT	1am / Mid.MT	Lidia's Kitchen	Martha's Cooking School	Martha Bakes	Lidia's Kitchen	Lidia's Kitchen	
	1:30 / 12:30MT	America's Test Kitchen		America's Test Kitchen	Cook's Country	Cook's Country	
	2am / 1 MT	Mexican Table	New Orleans Cooking	New Orleans Cooking	Pati's Mexican Table	Mexican Table	
	2:30 / 1:30 MT	Cooking (various)		Mexico One Plate at a Time	Cooking (various)	One Plate	
	3am / 2 MT	This Old House	Woodwright's Shop	Ask This Old House	Woodwright's Shop	This Old House	
	3:30 / 2:30MT	Globe Trekker	Travelscope	Rick Steves' Europe	Travelscope	Richard Bangs	
	4am / 3 MT		Travels w/Darley	Wild Photo	Equitrekking		Wild Photo
4:30 / 3:30MT	Lidia's Kitchen	Martha's Cooking School	Martha Stewart's Cooking School	Lidia's Kitchen	Lidia's Kitchen		
MORNING	5am / 4 MT	Knit and Crochet Now!		Quilting Arts	Sewing w/Nancy	April 1 "April in Paris" April 8 "On the Farm" April 15 "Boston Strong" April 22 "Shrimp Delight" April 29 "Pati's Cinco de Mayo Party"	
	5:30 / 4:30 MT	Frank Clarke Simply Painting		Paint This with Jerry Yarnell	Joy of Painting		
	6am / 5 MT	Great American Seafood Cook-Off		BBQ with Franklin	Taste of Louisiana		
	6:30 / 5:30 MT	Ciao Italia		Ellie's Real Good Food	Sara's Weeknight Meals		
	7am / 6 MT	Mike Colameco's Real Food		Garden to Table	Dining with the Chef		
	7:30 / 6:30 MT	Taste the Islands w/ Chef Irie		The Free Range	More Fast Food My Way		
	8am / 7 MT	Dream of Italy		Painting the Town	Family Travel		
	8:30 / 7:30 MT	Journeys in Japan		Travelscope	In the Americas		
	9am / 8 MT	This Old House		This Old House	Woodwright's Shop		
	9:30 / 8:30 MT	American Woodshop		Rough Cut – Woodworking	Woodsmith Shop		
	10am / 9 MT	Garden Smart		P. Allen Smith's Garden Home	Growing a Greener World		
	10:30 / 9:30 MT	For Your Home		Make Your Mark	Craftsman's Legacy		
	11am / 10 MT		Knit and Crochet Now!	Quilting Arts	Sewing w/Nancy		
	11:30 / 10:30MT		Frank Clarke Painting	Paint This with Jerry Yarnell	Joy of Painting		
AFTERNOON	Noon / 11 MT	Various cooking, travel and crafts programming	Cooking (various)	BBQ with Franklin	The Taste of Louisiana	Secrets of a Chef	
	12:30 / 11:30MT		Ciao Italia	Real Good Food	Sara's Weeknight Meals	Lidia's Kitchen	
	1pm / Noon MT		Real Food	Garden to Table	Dining with the Chef	Cook's Country	
	1:30 / 12:30 MT		Taste the Islands	The Free Range	More Fast Food My Way	Mexican Table	
	2pm / 1 MT		Dream of Italy	Painting the Town	Family Travel	One Plate	
	2:30 / 1:30 MT		Journeys in Japan	Travelscope	In the Americas	This Old House	
	3pm / 2 MT		Rick Steves' Europe	Rick Steves' Europe	Rick Steves' Europe	Richard Bangs	
	3:30 / 2:30MT		American Woodshop	Rough Cut – Woodworking	Woodsmith Shop		
	4pm / 3 MT		Garden Smart	P. Allen Smith's Garden Home	Growing a Greener World	Lidia's Kitchen	
	4:30 / 3:30MT		For Your Home	Make Your Mark	Craftsman's Legacy	Cook's Country	
EVENING	5pm / 4 MT	Ask This Old House		This Old House	Woodwright's Shop	Martha Bakes	
	5:30/4:30 MT	Cooking (various)	One Plate at a Time	Pati's Mexican Table	One Plate at a Time	Cooking w/ Friend	
	6pm / 5 MT	Chef's Life		Simply Ming	Joanne Weir Gets Fresh	April 1 "April in Paris" April 8 "On the Farm" April 15 "Boston Strong" April 22 "Shrimp Delight" April 29 "Pati's Cinco de Mayo Party"	
	6:30 / 5:30 MT	Jacques Pepin: Heart & Soul		Secrets of a Chef	Jacques Pepin: Heart & Soul		
	7pm / 6 MT	Martha Bakes	Lidia's Kitchen	Lidia's Kitchen	Martha's Cooking School		
	7:30 / 6:30 MT	America's Test Kitchen	Cook's Country	Cook's Country	America's Test Kitchen		
	8pm / 7 MT	New Orleans	Pati's Mexican Table	Pati's Mexican Table	New Orleans Cooking		
	8:30 / 7:30 MT	Cooking (various)	One Plate at a Time	One Plate at a Time	One Plate at a Time		
	9pm / 8 MT	This Old House		This Old House	Woodwright's Shop		
	9:30 / 8:30 MT	Rick Steves' Europe		Richard Bangs' Adventures	Travelscope		
	10pm / 9 MT	Wild Photo Adventures			Equitrekking		
	10:30 / 9:30 MT	Cooking (various)	Lidia's Kitchen	Lidia's Kitchen	Martha's Cooking School		
	11pm / 10 MT	America's Test Kitchen	Cook's Country	Cook's Country	America's Test Kitchen		Test Kitchen
	11:30 / 10:30MT	Chef's Life		Simply Ming	Joanne Weir Gets Fresh		Greener World
Mid. / 11 MT	Great American Seafood Cook-Off		Project Smoke	Taste of Louisiana	Louisiana		
12:30 / 11:30MT	Burt Wolf: Travels & Traditions		Islands without Cars	Rudy Maxa's World	Rudy Maxa		

SDPB Kids is a new channel with PBS Kids shows 24/7! Details and schedule at SDPB.org/kids24.

- SDPB Television programs are Closed Captioned for the Hearing Impaired.
- Schedule is subject to change. Visit SDPB.org/tvschedules for program details and schedule changes.
-  Indicates locally produced programming.
- SDPB1, SDPB2, SDPB3 and SDPB Kids are available free over-the-air via antenna and on most cable systems. Call your local provider to find out where you can find them on your cable system.

SATURDAY – APRIL 1

SDPB1

6:00 (5:00 MT) **The Lawrence Welk Show**
 7:00 (6:00 MT) **Doc Martin**
 8:00 (7:00 MT) **Keeping Up Appearances**
 8:30 (7:30 MT) **As Time Goes By**
 9:00 (8:00 MT) **Father Brown**
 10:00 (9:00 MT) **No Cover, No Minimum**
Davina Magness
 11:00 (10:00 MT) **Austin City Limits**
 Midnight (11:00 MT) **Front and Center** *CMA Songwriters Series*

SDPB2

1:00 (Noon MT) **Dead Reckoning: War & Justice** *The General's Ghost*
 2:00 (1:00 MT) **Dead Reckoning: War & Justice** *The Blind Eye*
 3:00 (2:00 MT) **Dead Reckoning: War & Justice** *In Our Time*
 4:00 (3:00 MT) **To the Contrary**
 4:30 (3:30 MT) **Washington Week**
 5:00 (4:00 MT) **PBS NewsHour**
 5:30 (4:30 MT) **Charlie Rose: The Week**
 6:00 (5:00 MT) **Focus on Europe**
 6:30 (5:30 MT) **Global 3000**
 7:00 (6:00 MT) **Eisenhower's Secret War** *From Warrior to President*
 8:00 (7:00 MT) **Eisenhower's Secret War** *Building Weapons, Talking Peace*
 9:00 (8:00 MT) **America ReFramed** *Enter the Faun*
 10:30 (9:30 MT) **Georgia O'Keeffe: A Woman on Paper**
 11:00 (10:00 MT) **Eisenhower's Secret War** *From Warrior to President*
 Midnight (11:00 MT) **Eisenhower's Secret War** *Building Weapons, Talking Peace*

SUNDAY – APRIL 2

SDPB1

Noon (11:00 MT) **Life on the Line**
 12:30 (11:30 MT) **Motorweek**
 1:00 (Noon MT) **South Dakota Focus**

2:00 (1:00 MT) **Prison Dogs**
 3:00 (2:00 MT) **Audubon**
 4:00 (3:00 MT) **Rick Steves' Europe**
 4:30 (3:30 MT) **Nature Adventures** *Wildlife of Puerto Rico*
 5:00 (4:00 MT) **Antiques Roadshow** *Palm Springs*
 6:00 (5:00 MT) **Midsomer Murders**
 7:00 (6:00 MT) **Call the Midwife**
 8:00 (7:00 MT) **Masterpiece Home Fires**
 9:00 (8:00 MT) **Masterpiece Wolf Hall**
 10:00 (9:00 MT) **Elizabeth I: War on Terror**
 11:00 (10:00 MT) **Globe Trekker**
 Midnight (11:00 MT) **Washington Week**

SDPB2

1:00 (Noon MT) **To the Contrary**
 1:30 (12:30 MT) **Washington Week**
 2:00 (1:00 MT) **American Forum**
 2:30 (1:30 MT) **Great Performances at the Met** *L'Amour de Loin*
 5:00 (4:00 MT) **PBS NewsHour Weekend**
 5:30 (4:30 MT) **Georgia O'Keeffe: A Woman on Paper**
 6:00 (5:00 MT) **Young Voices for the Planet**
 6:30 (5:30 MT) **Young Voices for the Planet**
 7:00 (6:00 MT) **Nature Yosemite**
 8:00 (7:00 MT) **Shifting Sands: On the Path to Sustainability**
 9:00 (8:00 MT) **Racing to Zero: In Pursuit of Zero Waste**
 10:00 (9:00 MT) **Turning the Tide**
 11:00 (10:00 MT) **Nature Yosemite**
 Midnight (11:00 MT) **Shifting Sands: On the Path to Sustainability**

MONDAY – APRIL 3

SDPB1

6:00 (5:00 MT) **PBS NewsHour**
 7:00 (6:00 MT) **Antiques Roadshow** *Salt Lake City*
 8:00 (7:00 MT) **Independent Lens** *Newtown*
 9:30 (8:30 MT) **Perfect 36: When Women Won the Vote**



Photo: Jim Urquhart/Reuters

Frontline American Patriot goes inside the violent battle between a ranching family in the West and the federal government, examining how a simmering fight over land in Nevada and Oregon became deadly, invigorated a wider right-wing anti-government movement, and continues to challenge prosecutors and law enforcement. With deep access to key people on all sides of the battle, the film investigates the standoffs that propelled the Bundy family into the national spotlight and the crosshairs of the federal government, the armed right-wing groups that have rallied to their cause, and what happens next.

SDPB1: Tuesday, April 4, 9pm (8 MT)
 SDPB2: Wednesday, April 5, 8pm (7 MT)

10:00 (9:00 MT) **Dakota Life**
 10:30 (9:30 MT) **BBC World News**
 11:00 (10:00 MT) **Charlie Rose**
 Midnight (11:00 MT) **Tavis Smiley**

SDPB2

6:00 (5:00 MT) **Jens Jensen The Living Green**
 7:00 (6:00 MT) **America's First Forest**
 8:00 (7:00 MT) **Life on the Line** *Against All Odds*
 8:30 (7:30 MT) **On Story** *Rodrigo Garcia on Writing Relations*
 9:00 (8:00 MT) **PBS NewsHour**
 10:00 (9:00 MT) **Nightly Business Report**
 10:30 (9:30 MT) **To the Contrary**
 11:00 (10:00 MT) **Jens Jensen The Living Green**
 Midnight (11:00 MT) **America's First Forest**

TUESDAY – APRIL 4

SDPB1

6:00 (5:00 MT) **PBS NewsHour**
 7:00 (6:00 MT) **Last Days of Jesus**
 9:00 (8:00 MT) **Frontline American Patriot**
 10:00 (9:00 MT) **Dakota Life** *Young People Exploring Their Dreams*
 10:30 (9:30 MT) **BBC World News**
 11:00 (10:00 MT) **Charlie Rose**
 Midnight (11:00 MT) **Tavis Smiley**

SDPB2

6:00 (5:00 MT) **Standing on Sacred Ground** *Pilgrims & Tourists*
 7:00 (6:00 MT) **America ReFramed** *If You Build It*
 8:30 (7:30 MT) **Spectrum: A Story of the Mind**
 9:00 (8:00 MT) **PBS NewsHour**
 10:00 (9:00 MT) **Nightly Business Report**
 10:30 (9:30 MT) **Global 3000**
 11:00 (10:00 MT) **America ReFramed** *If You Build It*

WEDNESDAY – APRIL 5

SDPB1

6:00 (5:00 MT) **PBS NewsHour**
 7:00 (6:00 MT) **Nature Owl Power**
 8:00 (7:00 MT) **NOVA Himalayan Megaquake**



Photo: Neal Street Productions 2016

The critically acclaimed British drama **Call the Midwife** returns to SDPB for a sixth season. It's now 1962 and times are changing. As they strive to help mothers and families cope with the demands of childbearing, disability, disease and social prejudice, the Poplar medics must make choices – and fight battles – of their own.

SDPB1: Sundays, April 2, 9, 16, 23 & 30, 7pm (6 MT)

(April 5, continued)

- 9:00 (8:00 MT) **Secrets of the Dead** *Leonardo, The Man Who Saved Science*
- 10:00 (9:00 MT) **Dakota Life** *Cowboy Up!*
- 10:30 (9:30 MT) **BBC World News**
- 11:00 (10:00 MT) **Charlie Rose**
- Midnight (11:00 MT) **Tavis Smiley**

SDPB2

- 6:00 (5:00 MT) **Trees in Trouble**
- 6:30 (5:30 MT) **Independent Lens** *Newtown*
- 8:00 (7:00 MT) **Frontline** *American Patriot*
- 9:00 (8:00 MT) **PBS NewsHour**
- 10:00 (9:00 MT) **Nightly Business Report**
- 10:30 (9:30 MT) **Focus on Europe**
- 11:00 (10:00 MT) **Trees in Trouble**
- 11:30 (10:30 MT) **Independent Lens** *Newtown*

THURSDAY – APRIL 6

SDPB1

- 6:00 (5:00 MT) **PBS NewsHour**
- 7:00 (6:00 MT) **On Call** *Bringing Balance to Obesity*
- 8:00 (7:00 MT) **Dakota Life**
- 8:30 (7:30 MT) **Dakota Life** *Darkrooms and Abandoned Towns*
- 9:00 (8:00 MT) **Doc Martin**
- 10:00 (9:00 MT) **Dakota Life** *Sustainable Trends*
- 10:30 (9:30 MT) **BBC World News**
- 11:00 (10:00 MT) **Charlie Rose**
- Midnight (11:00 MT) **Tavis Smiley**

SDPB2

- 6:00 (5:00 MT) **NOVA** *Himalayan Megaquake*
- 7:00 (6:00 MT) **Secrets of the Dead** *Leonardo, The Man Who Saved Science*
- 8:00 (7:00 MT) **Crowd & The Cloud** *Even Big Data Starts Small*
- 9:00 (8:00 MT) **PBS NewsHour**
- 10:00 (9:00 MT) **Nightly Business Report**
- 10:30 (9:30 MT) **Scully: The World**
- 11:00 (10:00 MT) **NOVA** *Himalayan Megaquake*
- Midnight (11:00 MT) **Secrets of the Dead** *Leonardo, The Man Who Saved Science*

FRIDAY – APRIL 7

SDPB1

- 6:00 (5:00 MT) **PBS NewsHour**
- 7:00 (6:00 MT) **Washington Week**
- 7:30 (6:30 MT) **Charlie Rose: The Week**
- 8:00 (7:00 MT) **Market to Market**



Photo: IVY Studios and Masterpiece

The final season of **Masterpiece Home Fires** follows a rural English village on the verge of World War II. As the separation from their husbands, fathers, sons and brothers becomes more painful, the women rely on one another and the friendships forged through village life. It will take calm, fortitude, and creativity to bring the diverse women of the village together, and to help the community survive what is to come. Samantha Bond (*Downton Abbey*) and Francesca Annis (*Reckless*) head the extraordinary cast.

SDPB1: Sundays, April 2, 9, 16, 23 & 30, 8pm (7 MT)

8:30 (7:30 MT) **Dakota Life**

- 9:00 (8:00 MT) **Great Performances** *Young Men*
- 10:30 (9:30 MT) **BBC World News**
- 11:00 (10:00 MT) **Charlie Rose**
- Midnight (11:00 MT) **Tavis Smiley**

SDPB2

- 6:00 (5:00 MT) **Last Days of Jesus**
- 8:00 (7:00 MT) **Mysteries of the Jesus Prayer**
- 9:00 (8:00 MT) **PBS NewsHour**
- 10:00 (9:00 MT) **Nightly Business Report**
- 10:30 (9:30 MT) **Asia Insight**
- 11:00 (10:00 MT) **Last Days of Jesus**

SATURDAY – APRIL 8

SDPB1

- 6:00 (5:00 MT) **The Lawrence Welk Show**
- 7:00 (6:00 MT) **Doc Martin**
- 8:00 (7:00 MT) **Keeping up Appearances**
- 8:30 (7:30 MT) **As Time Goes By**
- 9:00 (8:00 MT) **Father Brown**
- 10:00 (9:00 MT) **No Cover, No Minimum** *Harper & Midwest Kind*
- 11:00 (10:00 MT) **Austin City Limits** *The Avett Brothers/Nickel Creek*
- Midnight (11:00 MT) **Front and Center** *Rob Thomas*

SDPB2

- 1:00 (Noon MT) **Last Days of Jesus**
- 3:00 (2:00 MT) **Mysteries of the Jesus Prayer**
- 4:00 (3:00 MT) **To the Contrary**
- 4:30 (3:30 MT) **Washington Week**
- 5:00 (4:00 MT) **PBS NewsHour**
- 5:30 (4:30 MT) **Charlie Rose: The Week**
- 6:00 (5:00 MT) **Focus on Europe**
- 6:30 (5:30 MT) **Global 3000**
- 7:00 (6:00 MT) **Frederick Law Olmsted: Designing America**
- 8:00 (7:00 MT) **Olmsted and America's Urban Parks**
- 9:00 (8:00 MT) **America ReFramed** *If You Build It*
- 10:30 (9:30 MT) **Spectrum: A Story of the Mind**
- 11:00 (10:00 MT) **Frederick Law Olmsted: Designing America**
- Midnight (11:00 MT) **Olmsted and America's Urban Parks**

SUNDAY – APRIL 9

SDPB1

- 1:00 (Noon MT) **Dakota Life**
- 1:30 (12:30 MT) **Dakota Life** *Darkrooms and Abandoned Towns*
- 2:00 (1:00 MT) **Violins of Hope: Strings of the Holocaust**
- 3:00 (2:00 MT) **A Promise to My Father**
- 4:00 (3:00 MT) **Rick Steves' Europe**
- 4:30 (3:30 MT) **Nature Adventures** *Creatures of the Night*
- 5:00 (4:00 MT) **Antiques Roadshow** *Salt Lake City*
- 6:00 (5:00 MT) **Midsomer Murders**
- 7:00 (6:00 MT) **Call the Midwife**
- 8:00 (7:00 MT) **Masterpiece Home Fires**
- 9:00 (8:00 MT) **Masterpiece Wolf Hall**
- 10:05 (9:05 MT) **Bletchley Circle**
- 11:00 (10:00 MT) **Globe Trekker**
- Midnight (11:00 MT) **Washington Week**

SDPB2

- 1:00 (Noon MT) **To the Contrary**
- 1:30 (12:30 MT) **Washington Week**
- 2:00 (1:00 MT) **American Forum**
- 2:30 (1:30 MT) **Open Mind**
- 3:00 (2:00 MT) **Focus on Europe**
- 3:30 (2:30 MT) **Global 3000**
- 4:00 (3:00 MT) **Temples of Justice**



Photo: Library of Congress

American Experience *The Great War* is a six-hour, three-night event that tells the rich and complex story of World War I through the voices of nurses, journalists, aviators and the American troops who came to be known as "doughboys." The series explores the experiences of African-American and Latino soldiers, suffragists, Native-American "code talkers" and others whose participation in the war to "make the world safe for democracy" has been largely forgotten. (See p. 20 for more information.)

SDPB1: Monday-Wednesday, April 10-12, 8pm (9 MT)
 SDPB2: Thursday-Saturday, April 13-15, 6 & 11pm (5 & 10 MT)



Photo: Ken Howard/ Metropolitan Opera

The electrifying team of Vittorio Grigolo and Diana Damrau reunites for **Great Performances: *Romeo et Juliette*** – Bartlett Sher’s new production of Gounod’s opera based on the Shakespeare play. Conducted by Gianandrea Noseda, Damrau makes her role debut as Juliette. Elliot Madore sings Mercutio and Mikhail Petrenko sings Frère Laurent.
SDPB1: Friday, April 14, 9pm (8 MT)

(April 9, continued)

- 5:00 (4:00 MT) **PBS NewsHour Weekend**
- 5:30 (4:30 MT) **Spectrum: A Story of the Mind**
- 6:00 (5:00 MT) **Doing the Reptile Rumba**
- 7:00 (6:00 MT) **Nature Owl Power**
- 8:00 (7:00 MT) **Summer of Birds**
- 9:00 (8:00 MT) **Lost Bird Project**
- 10:00 (9:00 MT) **Plight of the Grassland Birds**
- 11:00 (10:00 MT) **Nature Owl Power**
- Midnight (11:00 MT) **Summer of Birds**

MONDAY – APRIL 10

SDPB1

- 6:00 (5:00 MT) **PBS NewsHour**
- 7:00 (6:00 MT) **Antiques Roadshow Salt Lake City**
- 8:00 (7:00 MT) **American Experience The Great War**
- 10:00 (9:00 MT) **Dakota Life** 📺
- 10:30 (9:30 MT) **BBC World News**
- 11:00 (10:00 MT) **Charlie Rose**
- Midnight (11:00 MT) **Tavis Smiley**

SDPB2

- 6:00 (5:00 MT) **School, Inc.**
- 7:00 (6:00 MT) **W. S. Merwin: To Plant a Tree**
- 8:00 (7:00 MT) **Life on the Line Heart to Heart**

- 8:30 (7:30 MT) **On Story Breaking Bad: A Conversation with Vince Gilligan**
- 9:00 (8:00 MT) **PBS NewsHour**
- 10:00 (9:00 MT) **Nightly Business Report**
- 10:30 (9:30 MT) **To the Contrary**
- 11:00 (10:00 MT) **School, Inc.**
- Midnight (11:00 MT) **W. S. Merwin: To Plant a Tree**

TUESDAY – APRIL 11

SDPB1

- 6:00 (5:00 MT) **PBS NewsHour**
- 7:00 (6:00 MT) **Nazi Mega Weapons Hitler’s Island Megafortress**
- 8:00 (7:00 MT) **American Experience The Great War**
- 10:00 (9:00 MT) **Dakota Life** 📺 *Water Ways*
- 10:30 (9:30 MT) **BBC World News**
- 11:00 (10:00 MT) **Charlie Rose**
- Midnight (11:00 MT) **Tavis Smiley**

SDPB2

- 6:00 (5:00 MT) **Standing on Sacred Ground Profit & Loss**
- 7:00 (6:00 MT) **America ReFramed Reversing the Mississippi**
- 8:00 (7:00 MT) **Beyond the Mirage: The Future of Water**
- 9:00 (8:00 MT) **PBS NewsHour**
- 10:00 (9:00 MT) **Nightly Business Report**
- 10:30 (9:30 MT) **Global 3000**
- 11:00 (10:00 MT) **America ReFramed Reversing the Mississippi**
- Midnight (11:00 MT) **Beyond the Mirage: The Future of Water**

WEDNESDAY – APRIL 12

SDPB1

- 6:00 (5:00 MT) **PBS NewsHour**
- 7:00 (6:00 MT) **Nature Viva Puerto Rico**
- 8:00 (7:00 MT) **American Experience The Great War**
- 10:00 (9:00 MT) **Dakota Life** 📺 *Women’s History*
- 10:30 (9:30 MT) **BBC World News**
- 11:00 (10:00 MT) **Charlie Rose**
- Midnight (11:00 MT) **Tavis Smiley**

SDPB2

- 6:00 (5:00 MT) **Liquid Assets: The Story of Our Water Infrastructure**
- 7:30 (6:30 MT) **Independent Lens The Great Invisible**
- 9:00 (8:00 MT) **PBS NewsHour**
- 10:00 (9:00 MT) **Nightly Business Report**
- 10:30 (9:30 MT) **Focus on Europe**
- 11:00 (10:00 MT) **Liquid Assets: The Story of Our Water Infrastructure**
- 12:30 (11:30 MT) **Independent Lens The Great Invisible**

THURSDAY – APRIL 13

SDPB1

- 6:00 (5:00 MT) **PBS NewsHour**
- 7:00 (6:00 MT) **On Call** 📺 *Dancers, Kickers, Gout and Foot Pain*
- 8:00 (7:00 MT) **South Dakota Focus** 📺 *The Shift*
- 9:00 (8:00 MT) **Doc Martin**
- 10:00 (9:00 MT) **Dakota Life** 📺 *Food & Fun in South Dakota*
- 10:30 (9:30 MT) **BBC World News**
- 11:00 (10:00 MT) **Charlie Rose**
- Midnight (11:00 MT) **Tavis Smiley**

SDPB2

- 6:00 (5:00 MT) **American Experience The Great War**
- 8:00 (7:00 MT) **Crowd & The Cloud Citizens & Scientists**
- 9:00 (8:00 MT) **PBS NewsHour**
- 10:00 (9:00 MT) **Nightly Business Report**
- 10:30 (9:30 MT) **Scully: The World Show**
- 11:00 (10:00 MT) **American Experience The Great War**

FRIDAY – APRIL 14

SDPB1

- 6:00 (5:00 MT) **PBS NewsHour**
- 7:00 (6:00 MT) **Washington Week**
- 7:30 (6:30 MT) **Charlie Rose**
- 8:00 (7:00 MT) **Market to Market**
- 8:30 (7:30 MT) **Dakota Life** 📺 *Summertime Activities*
- 9:00 (8:00 MT) **Great Performances Romeo et Juliette**
- Midnight (11:00 MT) **Tavis Smiley**

SDPB2

- 6:00 (5:00 MT) **American Experience The Great War**
- 8:00 (7:00 MT) **Model T’s to War: American Ambulances on the Western Front**
- 9:00 (8:00 MT) **PBS NewsHour**
- 10:00 (9:00 MT) **Nightly Business Report**
- 10:30 (9:30 MT) **Asia Insight**
- 11:00 (10:00 MT) **American Experience The Great War**

SATURDAY – APRIL 15

SDPB1

- 6:00 (5:00 MT) **The Lawrence Welk Show**
- 7:00 (6:00 MT) **Doc Martin**
- 8:00 (7:00 MT) **Keeping Up Appearances**
- 8:30 (7:30 MT) **As Time Goes By**
- 9:00 (8:00 MT) **Father Brown**
- 10:00 (9:00 MT) **No Cover, No Minimum** 📺 *Tweed Funk*
- 11:00 (10:00 MT) **Austin City Limits Spoon/White Denim**
- Midnight (11:00 MT) **Front and Center Shawn Mendes**



Photo: Getty/BBC/Windfall Films

On **Nature Viva Puerto Rico**, visit the tropical island infused with unique natural wonders but where the native wildlife is threatened with extinction. Meet the charismatic scientists dedicated to restoring Puerto Rico’s rich biological heritage, including manatees, parrots and turtles.

SDPB1: Wednesday, April 12, 7pm (6 MT)
SDPB2: Sunday, April 16, 7 & 11pm (6 & 10 MT)

(April 15, continued)

SDPB2

- 1:00 (Noon MT) **W. S. Merwin: To Plant a Tree**
- 2:00 (1:00 MT) **Doing the Reptile Rumba**
- 3:00 (2:00 MT) **Model T's to War: American Ambulances on the Western Front**
- 4:00 (3:00 MT) **To the Contrary**
- 4:30 (3:30 MT) **Washington Week**
- 5:00 (4:00 MT) **PBS NewsHour Weekend**
- 5:30 (4:30 MT) **Charlie Rose: The Week**
- 6:00 (5:00 MT) **American Experience *The Great War***
- 8:00 (7:00 MT) **Yanks Fight the Kaiser**
- 9:00 (8:00 MT) **America ReFramed *Reversing the Mississippi***
- 10:00 (9:00 MT) **Beyond the Mirage: The Future of Water**
- 11:00 (10:00 MT) **American Experience *The Great War***

SUNDAY – APRIL 16

SDPB1

- 1:00 (Noon MT) **South Dakota Focus**
- 2:00 (1:00 MT) **American Conscience: The Reinhold Niebuhr Story**
- 3:00 (2:00 MT) **Rick Steves Special *European Easter***
- 4:00 (3:00 MT) **Rick Steves' Europe *Germany's Hamburg***
- 4:30 (3:30 MT) **Nature Adventures** *Wings*
- 5:00 (4:00 MT) **Antiques Roadshow *Salt Lake City***
- 6:00 (5:00 MT) **Midsomer Murders**
- 7:00 (6:00 MT) **Call the Midwife**
- 8:00 (7:00 MT) **Masterpiece *Home Fires***
- 9:00 (8:00 MT) **Masterpiece *Wolf Hall***
- 10:05 (9:05 MT) **Bletchley Circle**
- 11:00 (10:00 MT) **Globe Trekker**
- Midnight (11:00 MT) **Washington Week**

SDPB2

- 1:00 (Noon MT) **To the Contrary**
- 1:30 (12:30 MT) **Washington Week**
- 2:00 (1:00 MT) **American Forum**
- 2:30 (1:30 MT) **Open Mind**
- 3:00 (2:00 MT) **Focus on Europe**
- 3:30 (2:30 MT) **Global 3000**
- 4:00 (3:00 MT) **America ReFramed *Reversing the Mississippi***
- 5:00 (4:00 MT) **PBS NewsHour Weekend**
- 5:30 (4:30 MT) **Dakota Life**
- 6:00 (5:00 MT) **Trailblazers: The New Zealand Story**
- 7:00 (6:00 MT) **Nature *Viva Puerto Rico***
- 8:00 (7:00 MT) **American Conscience: The Reinhold Neibuhr Story**
- 9:00 (8:00 MT) **Let There Be Light**
- 10:00 (9:00 MT) **Mysteries of the Jesus Prayer**
- 11:00 (10:00 MT) **Nature *Viva Puerto Rico***
- Midnight (11:00 MT) **American Conscience: The Reinhold Neibuhr Story**

MONDAY – APRIL 17

SDPB1

- 6:00 (5:00 MT) **PBS NewsHour**
- 7:00 (6:00 MT) **Antiques Roadshow *Salt Lake City***
- 8:00 (7:00 MT) **Antiques Roadshow *Chicago***
- 9:00 (8:00 MT) **Independent Lens *Seed: The Untold Story***
- 10:00 (9:00 MT) **Dakota Life** *Spokes People: Two Wheel Transportation*
- 10:30 (9:30 MT) **BBC World News**
- 11:00 (10:00 MT) **Charlie Rose**
- Midnight (11:00 MT) **Tavis Smiley**



Photo: Yac Vashern

What is now a peaceful forest in Ponar, Lithuania, was once Ground Zero for Hitler's Final Solution, where the Nazis shot as many as 100,000 people – mostly Jews – in systematic executions, then hid evidence of the mass murder. For **NOVA: Holocaust Escape Tunnel**, PBS joined an international team of archeologists to locate the last traces of a vanished people: the Jews of Vilnius. In the process, they made an extraordinary find—a hidden escape tunnel dug by Jewish prisoners at the Ponar death pits. This powerful new film reveals the dramatic discovery and shares incredible stories from the descendants of this unique group of Holocaust survivors, taking viewers on a scientific quest to unveil the secret history of Vilna and shed light on a nearly forgotten chapter of the Holocaust.

SDPB1: Wednesday, April 19, 8pm (7 MT)
SDPB2: Thursday, April 20, 6 & 11pm (5 & 10 MT)

SDPB2

- 6:00 (5:00 MT) **School, Inc. *Push or Pull***
- 7:00 (6:00 MT) **Pacific Heartbeat *Na Loea: The Masters II***
- 8:00 (7:00 MT) **Life on the Line *Out of the Rubble***
- 8:30 (7:30 MT) **On Story *Queens of Comedy***
- 9:00 (8:00 MT) **PBS NewsHour**
- 10:00 (9:00 MT) **Nightly Business Report**
- 10:30 (9:30 MT) **To the Contrary**
- 11:00 (10:00 MT) **School, Inc. *Push or Pull***
- Midnight (11:00 MT) **Pacific Heartbeat *Na Loea: The Masters II***

TUESDAY – APRIL 18

SDPB1

- 6:00 (5:00 MT) **PBS NewsHour**
- 7:00 (6:00 MT) **American Experience *Grand Coulee Dam***
- 8:00 (7:00 MT) **Frontline *Last Days of Solitary***
- 10:00 (9:00 MT) **Dakota Life** *Glassblowing, Road Signs and Trolley Trips*
- 10:30 (9:30 MT) **BBC World News**

- 11:00 (10:00 MT) **Charlie Rose**
- Midnight (11:00 MT) **Tavis Smiley**

SDPB2

- 6:00 (5:00 MT) **Standing on Sacred Ground *Fire & Ice***
- 7:00 (6:00 MT) **America ReFramed *Kivalina***
- 8:30 (7:30 MT) **Far Afield: A Conservation Love Story**
- 9:00 (8:00 MT) **PBS NewsHour**
- 10:00 (9:00 MT) **Nightly Business Report**
- 10:30 (9:30 MT) **Global 3000**
- 11:00 (10:00 MT) **America ReFramed *Kivalina***
- 12:30 (11:30 MT) **Far Afield: A Conservation Love Story**

WEDNESDAY – APRIL 19

SDPB1

- 6:00 (5:00 MT) **PBS NewsHour**
- 7:00 (6:00 MT) **Nature *Hotel Armadillo***
- 8:00 (7:00 MT) **NOVA *Holocaust Escape Tunnel***
- 9:00 (8:00 MT) **Escape from a Nazi Death Camp**
- 10:00 (9:00 MT) **Dakota Life** *Big Celebrations in Small Towns*
- 10:30 (9:30 MT) **BBC World News**
- 11:00 (10:00 MT) **Charlie Rose**
- Midnight (11:00 MT) **Tavis Smiley**

SDPB2

- 6:00 (5:00 MT) **Independent Lens *Seed: The Untold Story***
- 7:00 (6:00 MT) **Frontline *Last Days of Solitary***
- 9:00 (8:00 MT) **PBS NewsHour**
- 10:00 (9:00 MT) **Nightly Business Report**
- 10:30 (9:30 MT) **Focus on Europe**
- 11:00 (10:00 MT) **Independent Lens *Seed: The Untold Story***
- Midnight (11:00 MT) **Frontline *Last Days of Solitary***

THURSDAY – APRIL 20

SDPB1

- 6:00 (5:00 MT) **PBS NewsHour**
- 7:00 (6:00 MT) **On Call** *Headaches: Causes, Effects and Treatments*
- 8:00 (7:00 MT) **South Dakota Focus** *The Shift*
- 9:00 (8:00 MT) **Doc Martin**
- 10:00 (9:00 MT) **Dakota Life** *Passionate Pursuits*
- 10:30 (9:30 MT) **BBC World News**
- 11:00 (10:00 MT) **Charlie Rose**
- Midnight (11:00 MT) **Tavis Smiley**



Photo: FRONTLINE

Frontline *Last Days of Solitary* follows what happens to recently released prisoners when they go from solitary to the streets. With extraordinary access to the Maine State Prison, this compelling film examines the long-term effects of solitary confinement and efforts to reduce its use.

SDPB1: Tuesday, April 18, 8pm (7 MT)
SDPB2: Wednesday, April 19, 7pm (6 MT)

April Dakota Life

April's episode of **Dakota Life** celebrates living history in South Dakota – particularly the individuals and events that work to keep time-honored traditions alive.

We visit Pierre to meet author and illustrator Betsey DeLoache. Owner of Red Bird Studio, an art and framing store, DeLoache wrote and illustrated the book *Country Schools: Past and Present*, which also contains interviews with former and current students of South Dakota's country schools. She is currently at work on a second volume.

Next we take a wee bonnie trip to Aberdeen for the Northeast South Dakota Celtic Faire and Games. Held the third weekend of September, the popular festival hosts Irish and Scottish music, dancing, and food –

including a baking competition for tastiest scones and Irish soda bread. You *canna*e miss it!

We also venture south of Sioux Falls to ride with members of the Sioux Falls Polo Club. Polo enthusiasts like Jeff Schneekloth, who played polo professionally in New York before moving back to South Dakota, are working to expand and professionalize the sport in the state.

And we visit several towns in South Dakota that are working to help revitalize downtowns by renovating their local theatres.

The latest episode of **Dakota Life** premieres Thursday, April 6, at 8pm (7 MT) and rebroadcasts Sunday, April 9, at 1pm (Noon MT).



Two riders face off at a polo match in Sioux Falls.



The Sioux Falls Polo Club competes against the Madison, WI club.



Bagpipers at the Celtic Faire and Games in Aberdeen.



Children experience a one-room schoolhouse.



Participants toss the "caber" in the traditional Scottish Highland game of Caber Toss.

Exclusive Escorted Tours!

Bursch Travel has taken care of all the details on these exclusive trips.
All you have to do is sit back and enjoy!

Lutherland & Switzerland

September 11-23, 2017

TOUR HOST: Pastor Greg Billberg, Senior Pastor at
First Lutheran Church – Alexandria, MN



Iceland Explorer

featuring 6 nights in Reykjavik
October 4 - 11, 2017
Escorted by Donna Strommen

Amazing Portugal

Oct. 21 - Nov. 1, 2017

Sun-drenched beaches,
vine-filled valleys and
wild remote mountains
Portugal has it all!

Escorted by Jennifer Nangle



Costa Rica Adventure

Feb 21 -
Mar 2, 2018

Onboard Regal Princess
Escorted by Donna Strommen
Costa Rica is Central America's
greatest hidden gem.

For complete details of
each of these trips and
others visit

www.burschtravel.com

Bursch Travel

803 Saint Patrick St.
Rapid City, South Dakota

605-342-2700 or

1-800-658-3348



2016 Best Premium
Cruise Line
*Travel Weekly's 14th Annual
Readers' Choice Awards*

ISLAND TIME ALL THE TIME

On Celebrity Equinox.SM

You can soak up some golden sunshine and turquoise waters with the only premium cruise line sailing the Caribbean year-round. Revel in our inspired cuisine, stylish staterooms, and intuitive service, from 7 to 11 nights. Plus, in 2018 we're adding new itineraries, shore excursions, and destinations, including Punta Cana.

Bursch Travel
803 Saint Patrick St.
Rapid City, SD 57701
605-342-2700 or 800-658-3348
www.burschtravel.com



Celebrity **X** Cruises[®]

SAIL BEYOND BORDERS

(April 20, continued from page 11)

SDPB2

- 6:00 (5:00 MT) **NOVA Holocaust Escape Tunnel**
- 7:00 (6:00 MT) **Escape from a Nazi Death Camp**
- 8:00 (7:00 MT) **Crowd & The Cloud Viral vs. Virus**
- 9:00 (8:00 MT) **PBS NewsHour**
- 10:00 (9:00 MT) **Nightly Business Report**
- 10:30 (9:30 MT) **Scully: The World Show**
- 11:00 (10:00 MT) **NOVA Holocaust Escape Tunnel**
- Midnight (11:00 MT) Escape from a Nazi Death Camp**

FRIDAY – APRIL 21

SDPB1

- 6:00 (5:00 MT) **PBS NewsHour**
- 7:00 (6:00 MT) **Washington Week**
- 7:30 (6:30 MT) **Charlie Rose: The Week**
- 8:00 (7:00 MT) **Market to Market**
- 8:30 (7:30 MT) **Dakota Life** *Play Ball!*
- 9:00 (8:00 MT) **Craft in America**
- 10:00 (9:00 MT) **MN Original**
- 10:30 (9:30 MT) **BBC World News**
- 11:00 (10:00 MT) **Charlie Rose**
- Midnight (11:00 MT) Tavis Smiley**

SDPB2

- 6:00 (5:00 MT) **New Metropolis A Crack in the Pavement**
- 6:30 (5:30 MT) **New Metropolis The New Neighbors**
- 7:00 (6:00 MT) **Eating Alabama**
- 8:00 (7:00 MT) **Growing Cities**
- 9:00 (8:00 MT) **PBS NewsHour**
- 10:00 (9:00 MT) **Nightly Business Report**
- 10:30 (9:30 MT) **Asia Insight**
- 11:00 (10:00 MT) **New Metropolis A Crack in the Pavement**
- 11:30 (10:30 MT) **New Metropolis The New Neighbors**
- Midnight (11:00 MT) Eating Alabama**

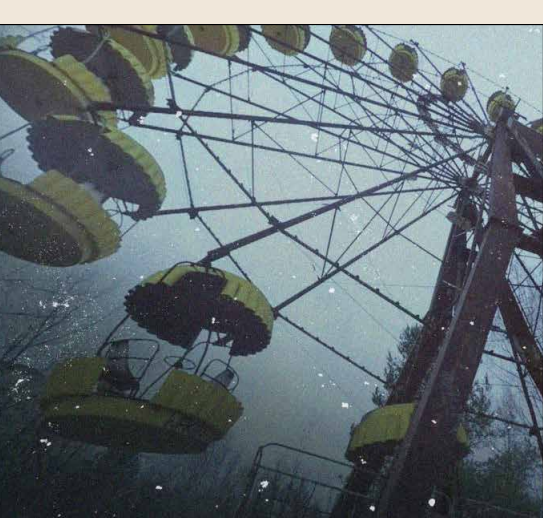


Photo: pbs.org

NOVA Building Chernobyl's Mega Tomb captures an international team of engineers racing to construct a gargantuan dome to contain the lingering radioactive materials and crumbling remains of the Chernobyl nuclear reactor, decades after being the site of the world's worst nuclear disaster.

SDPB1: Wednesday, April 26, 8pm (7 MT)

SDPB2: Thursday, April 27, 6 & 11pm (5 & 10 MT)

Photo: Playground and Co. Pictures/Masterpiece



Emmy® and Golden Globe® Award-winner Damian Lewis (*Homeland*) and Tony® Award-winning actor Mark Rylance (*Twelfth Night*) star in **Masterpiece Wolf Hall** – a six-hour television miniseries adapted from Hilary Mantel's best-selling Booker Prize-winning novels: *Wolf Hall* and its sequel, *Bring Up the Bodies*. The television event presents an intimate and provocative portrait of Thomas Cromwell, the brilliant and enigmatic consigliere to King Henry VIII, as he maneuvers the corridors of power at the Tudor court.

SDPB1: Sundays, April 2, 9, 16, 23 & 30

SATURDAY – APRIL 22

SDPB1

- 6:00 (5:00 MT) **The Lawrence Welk Show**
- 7:00 (6:00 MT) **Doc Martin**
- 8:00 (7:00 MT) **SD High School All-State Band**
-
- 10:00 (9:00 MT) **No Cover, No Minimum**
Jack Brass Band
- 11:00 (10:00 MT) **Austin City Limits** *Cassandra Wilson*
- Midnight (11:00 MT) Front and Center** *Cheap Trick*

SDPB2

- 6:00 (5:00 MT) **Focus on Europe**
- 6:30 (5:30 MT) **Global 3000**
- 7:00 (6:00 MT) **American Masters A Fierce Green Fire**
- 8:00 (7:00 MT) **Rebels with a Cause**
- 9:00 (8:00 MT) **America ReFramed Kivalina**
- 10:30 (9:30 MT) **Far Afield: A Conservation Love Story**
- 11:00 (10:00 MT) **American Masters A Fierce Green Fire**
- Midnight (11:00 MT) Rebels with a Cause**

SUNDAY – APRIL 23

SDPB1

- 1:00 (Noon MT) **South Dakota Focus**
- 2:00 (1:00 MT) **SD High School All State Band**
-
- 4:00 (3:00 MT) **Rick Steves' Europe Germany's Dresden and Leipzig**
- 4:30 (3:30 MT) **Nature Adventures** *Hoofed Animals*
- 5:00 (4:00 MT) **Antiques Roadshow Salt Lake City**
- 6:00 (5:00 MT) **Midsomer Murders**
- 7:00 (6:00 MT) **Call the Midwife**
- 8:00 (7:00 MT) **Masterpiece Home Fires**
- 9:00 (8:00 MT) **Masterpiece Wolf Hall**
- 10:05 (9:05 MT) **Bletchley Circle**
- 11:00 (10:00 MT) **Globe Trekker**
- Midnight (11:00 MT) Washington Week**

SDPB2

- 1:00 (12:00 MT) **To the Contrary**
- 1:30 (12:30 MT) **Eyes on the Prize Then and Now**
- 2:00 (1:00 MT) **Eyes on the Prize The Time Has Come (1964-1966)**
- 3:00 (2:00 MT) **Eyes on the Prize Two Societies (1965-68)**

- 4:00 (3:00 MT) **Eyes on the Prize Power!** (1966-68)
- 5:00 (4:00 MT) **Eyes on the Prize The Promised Land (1967-68)**
- 6:00 (5:00 MT) **Images of the Past** *The South Dakota State Fair*
- 6:30 (5:30 MT) **PBS NewsHour Weekend**
- 7:00 (6:00 MT) **Nature Hotel Armadillo**
- 8:00 (7:00 MT) **Violins of Hope: Strings of the Holocaust**
- 9:00 (8:00 MT) **Making Light in Terezin**
- 10:00 (9:00 MT) **Refuge: Stories of the Selfhelp Home**
- 11:00 (10:00 MT) **Nature Hotel Armadillo**
- Midnight (11:00 MT) Violins of Hope: Strings of the Holocaust**

MONDAY – APRIL 24

SDPB1

- 6:00 (5:00 MT) **PBS NewsHour**
- 7:00 (6:00 MT) **Antiques Roadshow Virginia Beach**
- 8:00 (7:00 MT) **Antiques Roadshow Chicago**
- 9:00 (8:00 MT) **Independent Lens The Last Laugh**
- 10:30 (9:30 MT) **BBC World News**
- 11:00 (10:00 MT) **Charlie Rose**
- Midnight (11:00 MT) Tavis Smiley**

SDPB2

- 6:00 (5:00 MT) **School, Inc. Forces and Choices**
- 7:00 (6:00 MT) **Pacific Heartbeat Mele Murals**
- 8:00 (7:00 MT) **Local USA Portrait of Harry**
- 8:30 (7:30 MT) **On Story Jeff Nichols/Loving Q&A**
- 9:00 (8:00 MT) **PBS NewsHour**
- 10:00 (9:00 MT) **Nightly Business Report**
- 10:30 (9:30 MT) **To the Contrary**
- 11:00 (10:00 MT) **School, Inc. Forces and Choices**
- Midnight (11:00 MT) Pacific Heartbeat Mele Murals**

TUESDAY – APRIL 25

SDPB1

- 6:00 (5:00 MT) **PBS NewsWeek**
- 7:00 (6:00 MT) **American Experience Command and Control**
- 9:00 (8:00 MT) **Frontline The Fish on My Plate**
- 10:30 (9:30 MT) **BBC World News**
- 11:00 (10:00 MT) **Charlie Rose**
- Midnight (11:00 MT) Tavis Smiley**

(April 25, continued)

SDPB2

- 6:00** (5:00 MT) **Standing on Sacred Ground**
Islands of Sanctuary
- 7:00** (6:00 MT) **America ReFramed Class**
of '27
- 8:00** (7:00 MT) **Against All Odds: The Fight**
for a Black Middle Class
- 9:00** (8:00 MT) **PBS NewsHour**
- 10:00** (9:00 MT) **Nightly Business Report**
- 10:30** (9:30 MT) **Global 3000**
- 11:00** (10:00 MT) **America ReFramed Class**
of '27

WEDNESDAY – APRIL 26

SDPB1

- 6:00** (5:00 MT) **PBS NewsHour**
- 7:00** (6:00 MT) **Nature Forest of the Lynx**
- 8:00** (7:00 MT) **NOVA Building Chernobyl's**
Mega Tomb
- 9:00** (8:00 MT) **Wild Weather**
- 10:00** (9:00 MT) **Dakota Life** ♡ *Arts and*
Artisans
- 10:30** (9:30 MT) **BBC World News**
- 11:00** (10:00 MT) **Charlie Rose**
- Midnight** (11:00 MT) **Tavis Smiley**

SDPB2

- 6:00** (5:00 MT) **Independent Lens** *The Last*
Laugh
- 7:30** (6:30 MT) **Frontline** *The Fish on My Plate*
- 9:00** (8:00 MT) **PBS NewsHour**
- 10:00** (9:00 MT) **Nightly Business Report**
- 10:30** (9:30 MT) **Focus on Europe**
- 11:00** (10:00 MT) **Independent Lens** *The Last*
Laugh
- Midnight** (11:00 MT) **Independent Lens** *The*
Fish on My Plate

THURSDAY – APRIL 27

SDPB1

- 6:00** (5:00 MT) **PBS NewsHour**
- 7:00** (6:00 MT) **On Call** ♡ *Ask Anything*
- 8:00** (7:00 MT) **South Dakota Focus** ♡
- 9:00** (8:00 MT) **Doc Martin**
- 10:00** (9:00 MT) **Dakota Life** ♡
- 10:30** (9:30 MT) **BBC World News**
- 11:00** (10:00 MT) **Charlie Rose**
- Midnight** (11:00 MT) **Tavis Smiley**

SDPB2

- 6:00** (5:00 MT) **NOVA Building Chernobyl's**
Mega Tomb
- 7:00** (6:00 MT) **Wild Weather**
- 8:00** (7:00 MT) **Crowd & The Cloud**
Citizens4Earth
- 9:00** (8:00 MT) **PBS NewsHour**
- 10:00** (9:00 MT) **Nightly Business Report**
- 10:30** (9:30 MT) **Scully: The World Show**
- 11:00** (10:00 MT) **NOVA Building Chernobyl's**
Mega Tomb
- Midnight** (11:00 MT) **Wild Weather**

FRIDAY – APRIL 28

SDPB1

- 6:00** (5:00 MT) **PBS NewsHour**
- 7:00** (6:00 MT) **Washington Week**
- 7:30** (6:30 MT) **Charlie Rose**
- 8:00** (7:00 MT) **Market to Market**
- 8:30** (7:30 MT) **Dakota Life** ♡ *Honoring*
Heroes
- 9:00** (8:00 MT) **Latin Music USA**
- 11:00** (10:00 MT) **Charlie Rose**
- Midnight** (11:00 MT) **Tavis Smiley**

SDPB2

- 6:00** (5:00 MT) **American Experience**
Command and Control
- 8:00** (7:00 MT) **Nuclear Requiem**
- 9:00** (8:00 MT) **PBS NewsHour**
- 10:00** (9:00 MT) **Nightly Business Report**
- 10:30** (9:30 MT) **Asia Insight**
- 11:00** (10:00 MT) **American Experience**
Command and Control

SATURDAY – APRIL 29

SDPB1

- 6:00** (5:00 MT) **The Lawrence Welk Show**
- 7:00** (6:00 MT) **Doc Martin**
- 8:00** (7:00 MT) **Keeping up Appearances**
- 8:30** (7:30 MT) **As Time Goes By**
- 9:00** (8:00 MT) **Father Brown**
- 10:00** (9:00 MT) **No Cover, No Minimum** ♡
Brian Masek and Friends
- 11:00** (10:00 MT) **Austin City Limits** *Natalia*
Lafourcade/Grupo Fantasma
- Midnight** (11:00 MT) **Front and Center**
Southside Johnny

SDPB2

- 1:00** (Noon MT) **American Experience**
Command and Control
- 3:00** (2:00 MT) **Nuclear Requiem**
- 4:00** (3:00 MT) **To the Contrary**
- 4:30** (3:30 MT) **Washington Week**
- 5:00** (4:00 MT) **PBS NewsHour Weekend**
- 5:30** (4:30 MT) **Charlie Rose: The Week**
- 6:00** (5:00 MT) **Focus on Europe**
- 6:30** (5:30 MT) **Global 3000**
- 7:00** (6:00 MT) **Paving the Way: The National**
Park-to-Park Highway *See America*
First
- 8:00** (7:00 MT) **Paving the Way: The National**
Park-to-Park Highway *Welcome*
Home
- 9:00** (8:00 MT) **America ReFramed Class of '27**
- 10:00** (9:00 MT) **Against All Odds: The Fight**
for a Black Middle Class
- 11:00** (10:00 MT) **Paving the Way: The**
National Park-to-Park Highway *See*
America First
- Midnight** (11:00 MT) **Paving the Way: The**
National Park-to-Park Highway
Welcome Home

SUNDAY – APRIL 30

SDPB1

- 1:00** (Noon MT) **South Dakota Focus** ♡
- 2:00** (1:00 MT) **Magic of the Diary of Anne**
Frank
- 3:00** (2:00 MT) **Enemy of the Reich: The Noor**
Inayat Khan Story
- 4:00** (3:00 MT) **Rick Steves' Europe** *Germany's*
Frankfurt and Nurnberg
- 4:30** (3:30 MT) **Nature Adventures** ♡ *The*
Beauty of Puerto Rico
- 5:00** (4:00 MT) **Antiques Roadshow** *Virginia*
Beach
- 6:00** (5:00 MT) **Midsomer Murders**
- 7:00** (6:00 MT) **Call the Midwife**
- 8:00** (7:00 MT) **Masterpiece Home Fires**
- 9:00** (8:00 MT) **Masterpiece Wolf Hall**
- 10:00** (9:00 MT) **Bletchley Circle**
- 11:00** (10:00 MT) **Globe Trekker**
- Midnight** (11:00 MT) **Washington Week**

SDPB2

- 1:00** (Noon MT) **To the Contrary**
- 1:30** (12:30 MT) **Washington Week**
- 2:00** (1:00 MT) **Eyes on the Prize** *Ain't Gonna*
Shuffle (1964-70)
- 3:00** (2:00 MT) **Eyes on the Prize** *A Nation of*
Law? (1968-71)
- 4:00** (3:00 MT) **Eyes on the Prize** *The Keys to*
the Kingdom (1974-80)
- 5:00** (4:00 MT) **Eyes on the Prize** *Back to the*
Movement (1979-mid 80s)
- 6:00** (5:00 MT) **Images of the Past** ♡ *The*
Historical Footprints Collection
- 6:30** (5:30 MT) **PBS NewsHour Weekend**
- 7:00** (6:00 MT) **Nature Forest of the Lynx**
- 8:00** (7:00 MT) **Making Sense of Place:**
Portland
- 9:00** (8:00 MT) **One Day in the American City**
The Love of City
- 9:30** (8:30 MT) **One Day in the American City**
The Struggles of our Cities
- 10:00** (9:00 MT) **One Day in the American City**
The Hope for our Cities
- 10:30** (9:30 MT) **Keeping up the Potomac**
- 11:00** (10:00 MT) **Nature Forest of the Lynx**
- Midnight** (11:00 MT) **Making Sense of Place**



Photo: Scott Newton/KLIRU

On **Austin City Limits**, Mexican superstar Natalia Lafourcade performs an infectious mix of rock, pop, folk and bossa nova songs from her Grammy-winning album *Hasta la Ruiz (To the Root)*. The nine-piece orchestra Grupo Fantasma wows with their seamless performance of funk, mambo, merengue and cumbia. They've entertained troops overseas and served as a backing band for Prince, who praised them as "real musicians playing real music."

SDPB1: Saturday, April 29, 11pm (10 MT)

Gene Hufford

Your Professional Insurance Team on Jackson Blvd. Since 1989.



Insure carefully, dream fearlessly[®]

2127 Jackson Blvd., Rapid City
605.342.7757 • GeneHufford.com

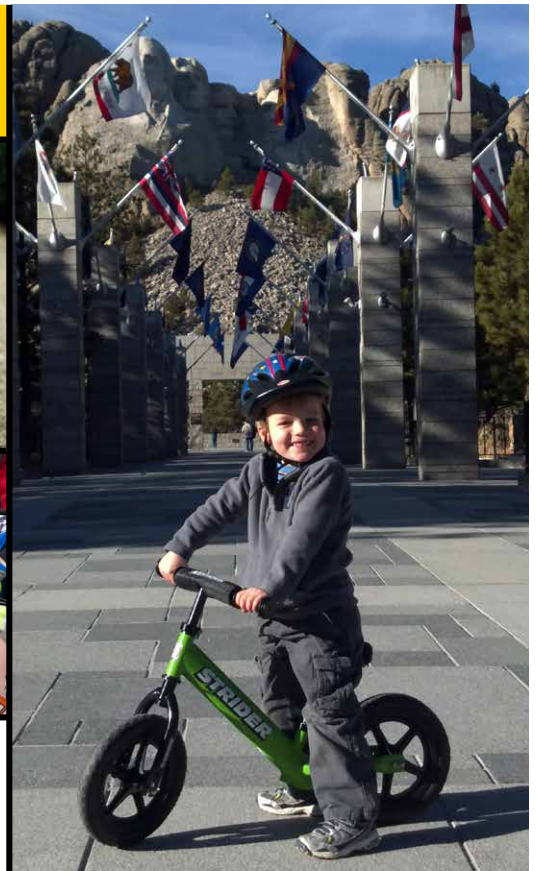
Gene Hufford Agency Inc.



American Family Insurance Mutual Insurance Company
6000 American Parkway, Madison, WI 53783

Left to Right: Bob Chalberg, Customer Sales Representative;
Darla Spies, Customer Sales Representative;
Gene Hufford, Agent; Jodie Pooler, Office Manager;
and Jeremy Uphoff, Customer Sales Representative.

©2017 006441 03/17



Ryan McFarland's passion for spending time with his family, riding on two wheels, and teaching children how to ride using the Strider Bike was the genesis for what is now known as Strider Sports International, Inc., formed January 9, 2007 in Rapid City, South Dakota. Join us in celebrating 10 years and over 1.5 million bikes sold worldwide!



Learn more at
www.StriderBikes.com

IT'S SPRING! IT'S SPRING!

Buddy's on the Wing!



Buddy the SDPB Bird is refreshed from his winter rest and ready to meet and greet his avid followers at events throughout South Dakota.

With generous funding from Liv Hospitality/WaTiki Indoor Water Park, SDPB has been able to retire the original Buddy mascot costume, which – after hundreds of public appearances and thousands of hugs and high fives from adoring young fans – had grown love-worn and threadbare.

The new, improved Buddy makes his debut **April 28-30 at the Youth & Family Services Kids Fair at the Rushmore Plaza Civic Center in Rapid City.** Kids and families are invited to meet Buddy, see amazing science demonstrations from SDPB's "Science Steve," and take in over 70 booths featuring fun, hands-on educational activities.

Thank you to:



Buddy will fly in to greet fans at these upcoming events. Visit SDPB's booth to meet Buddy, learn about bees, and sign up to win a Strider Bike! We'll give bikes away at events throughout the summer!

YFS Kids Fair - Rushmore Plaza Civic Center, Rapid City on Friday, April 28 - Sunday, April 30

The BIG Event (Believe in Girls) - Ramkota Exhibit Hall, Sioux Falls on Saturday, May 6, 10am-noon

Kids Art Fest - Riverside Park, Yankton on Tuesday, May 30

Outdoor University West - Outdoor Campus, Rapid City on Saturday, July 8

Storybook Land Festival - Aberdeen on Friday, July 21 - Saturday, July 22

Outdoor University East - Outdoor Campus, Sioux Falls on Saturday, August 5

To follow Buddy, receive PBS KIDS activities, and get your birthday announced on SDPB-TV, join Buddy's Birdhouse at SDPB.org/Buddy.



SDPB Opens Black Hills Bureau



The exterior of the new SDPB Black Hills Bureau, which will be located in the former Parts Central building at 415 Main Street, Rapid City.

SDPB is excited to announce the establishment of an SDPB Black Hills Bureau. Opening in 2017, the bureau will serve as a reporting and storytelling production center for original media content created in the

Black Hills and a public gathering space for program tapings, premieres, public events, and audience-participation discussions.

SDPB's Black Hills Bureau is part of our intentional effort to expand

community and audience engagement in the Black Hills region.

To this end, SDPB has secured the Parts Central Building in downtown Rapid City for the bureau. SDPB will build on existing West River radio and development staff to increase the community's access to our services and to expand the impact of our programs.

The Black Hills Bureau will serve primarily as a radio station and compact television station. The radio station will permit broadcasts of SDPB's statewide programs from Rapid City, reducing the need for an on-site Radio Operator at SDPB's main studios in Vermillion. The Black Hills Bureau will support smaller-scale live and pre-recorded television programming and digital-first production for SDPB.org.

The Black Hills Bureau will also be a gathering space for community engagement. It will accommodate seating for 50 participants in roundtable discussions and up to 135 in theatre-seating for premier parties, speakers, and events.

PBS — America's Most Trusted Institution

Nationwide survey confirms public trust for 14th consecutive year.

For the 14th year in a row, a nationwide study recently confirmed that PBS and its member stations are rated #1 in public trust among nationally known institutions. The same survey found that parents rank PBS KIDS as the #1 educational media brand for children, significantly outscoring cable and commercial broadcast television networks.

"Over 61% of kids ages 3-4 in South Dakota do not attend pre-school*," says Julie Overgaard, Executive Director, SDPB. "The mission of SDPB's educational programming and resources is to ensure that early learning opportunities reach all children throughout our state. We're proud

that Americans hold our children's programming in such high regard. This trust is essential to SDPB's mission to ensure all our kids have the skills they need now to succeed later – particularly those who are most in need of our services and programs."

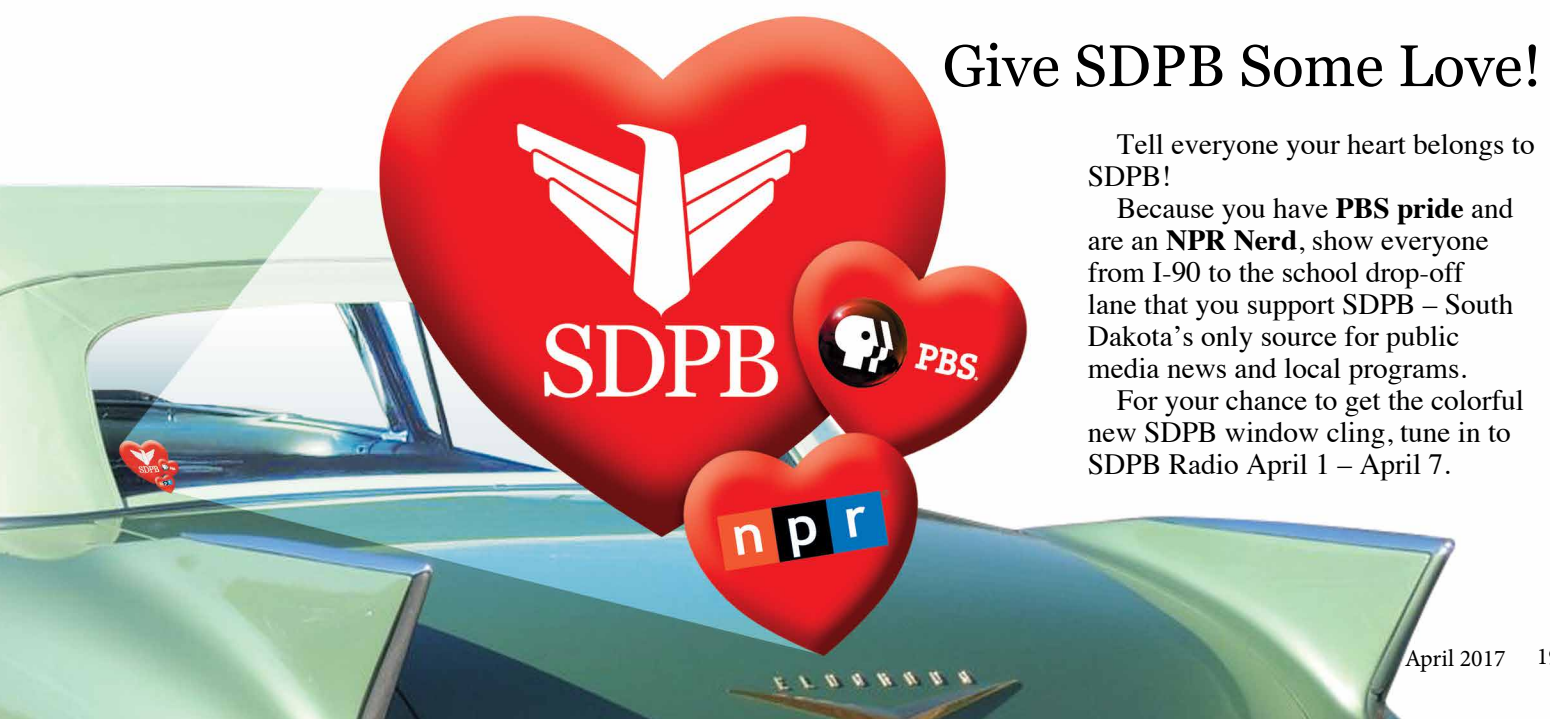
Nearly 8 in 10 people trust PBS (76% "trust a great deal" or "trust somewhat"). The 2017 study marks the 14th time in a row that PBS was called the nation's most-trusted institution among a consideration set that includes courts of law, commercial cable and broadcast television, newspapers, digital platforms and others. The study found that respondents had a significantly higher level of trust in PBS (42%

"trust a great deal") over the nearest institutions, including commercial cable television (24% "trust a great deal") and courts of law (22% "trust a great deal").

Sixty-two percent (62%) of respondents with kids age 18 and under named PBS KIDS the most educational media brand, significantly outscoring the second most highly rated kids brand, Sprout, which was considered most educational by 11%. The national poll was created by the research team at PBS and was conducted by telephone in January 2017 by Marketing & Research Resources Inc. (M&RR). Each year, PBS commissions research to measure its performance and value as judged by its most important stakeholder – the American people.

*2016 South Dakota Kids Count Factbook, Beacom School of Business, University of South Dakota.

RADIO	WEEKDAYS	SATURDAYS	SUNDAYS
5am / 4 MT	Morning Edition News and more from NPR's Steve Inskeep, Rachel Martin & David Greene and SDPB's Gary Ellenbolt.	BBC World Service Overnight.	BBC World Service Overnight.
5:30/4:30 MT		The People's Pharmacy Health news & alternatives.	TED Radio Hour Ideas, inventions and original thinking.
6am / 5 MT		Weekend Edition News and features from NPR.	Weekend Edition News and features from NPR.
6:30/5:30 MT			
7am / 6 MT			
7:30/6:30 MT	On Point with Tom Ashbrook Lively conversations about issues and the arts.	The Best of Car Talk Real advice, zany hosts.	On Being with Krista Tippett Philosophical discussions.
8am / 7 MT		Wait, Wait ... Don't Tell Me! Trivia, humor from week's news.	Travel with Rick Steves America's top travel expert.
8:30/7:30 MT	In the Moment with Lori Walsh ▼ SDPB's daily news & culture magazine program. Tech Radio & Innovation on Fridays.	This American Life Portraits of all kinds of Americans.	Milk Street Kitchen Recipes, tips, and information.
9am / 8 MT		Radiolab Science and life.	A Prairie Home Companion Music, humor, skits and more with Chris Thile.
9:30/8:30 MT	Here & Now News, features, conversations and more from NPR.	TED Radio Hour Ideas, inventions and original thinking.	Wait, Wait ... Don't Tell Me! Trivia, humor from week's news.
10am / 9 MT		Ask Me Another Test your wits in this lively quiz show.	
10:30/9:30 MT	Science Friday on Fridays.	The Dinner Party Download Pop culture, food & conversation.	On the Media News analysis and journalistic journeys.
11am / 10 MT		All Things Considered NPR	All Things Considered NPR
11:30/10:30MT	All Things Considered News, interviews & features with NPR's Robert Siegel, Audie Cornish, Ari Shapiro & Kelly McEvers.	A Prairie Home Companion Music, humor, skits and more with Chris Thile.	Fresh Air Weekend Best features from the week.
Noon / 11 MT			National Native News 4:30 (3:30 MT)
12:30/11:30MT	Marketplace	American Routes Roots music, stories behind sounds & artists.	This American Life Portraits of all kinds of Americans.
1pm / Noon MT			No Cover, No Minimum Radio ▼ South Dakota performance.
1:30/12:30 MT	Fresh Air with Terry Gross Celeb & newsmaker interviews.	On Record with Matt Weesner ▼ Adult alternative music.	Big Band Spotlight with Karl Gehrke ▼ Music of '30s & '40s.
2pm / 1 MT			Jazz Nightly with Karl Gehrke ▼ Karl features jazz artists & styles, as well as South Dakota Jazz Stars.
2:30/1:30 MT	World Café Music from around the globe.	BBC World Service Overnight.	No Cover, No Minimum Radio ▼ South Dakota performance.
3pm / 2 MT			BBC World Service Overnight.
3:30/2:30 MT	BBC World Service Overnight.	BBC World Service Overnight.	BBC World Service Overnight.
4pm / 3 MT			



Give SDPB Some Love!

Tell everyone your heart belongs to SDPB!

Because you have **PBS pride** and are an **NPR Nerd**, show everyone from I-90 to the school drop-off lane that you support SDPB – South Dakota's only source for public media news and local programs.

For your chance to get the colorful new SDPB window cling, tune in to SDPB Radio April 1 – April 7.

SDPB Brings *The Wall That Heals* to Chamberlain in August

In conjunction with **The Vietnam War**, a new film by Ken Burns and Lynn Novick premiering this fall on SDPB, South Dakota Public Broadcasting has arranged to bring *The Wall That Heals*, a 250-foot replica of the Vietnam Veterans Memorial, to Chamberlain on August 10-13, 2017.

The Wall That Heals, a half-scale replica of the “The Wall” in Washington, D.C., will be on display at the I-90 Information Center and Rest Area at Chamberlain, near the Dignity sculpture. The exhibit is part of SDPB’s statewide outreach effort to honor veterans from the Vietnam era, Gold Star families, and others affected by the Vietnam War.

The Wall That Heals, and its accompanying Education Center, honors the more than three million Americans who served in the U.S. Armed Forces in the Vietnam War. It bears the names of the more than 58,000 men and women who made the ultimate sacrifice in Vietnam.

“South Dakota has a long tradition of honoring its veterans and others involved in war. Being able to bring

The Wall That Heals to South Dakota is a thrill and an honor for South Dakota Public Broadcasting,” said Julie Overgaard, Executive Director of SDPB. “We’re grateful to have a scenic location that will make *The Wall That Heals* accessible to thousands of South Dakotans and visitors to our state.”

The Vietnam Veterans Memorial is one of the most visited memorials in our nation’s capital, with more than 5.6 million visitors each year. However, many Americans have not been able to visit what has become known to many as “The Wall.” The Vietnam Veterans Memorial Fund (VVMF), the organization that built The Wall in 1982, wants to give all veterans and their family members all across America an opportunity to see the Memorial. Hosting *The Wall That Heals* provides South Dakota with a multi-day experience that includes an educational experience for local educators and organizations on the history of the Vietnam era and The Wall.

Plans for the display of the replica will include arrival and departure

ceremonies. Local residents and retired and active military personnel will staff *The Wall That Heals* 24-hours a day during its time in Chamberlain.

More details will be announced in the August issue of *SDPB Magazine* and on SDPB.org.

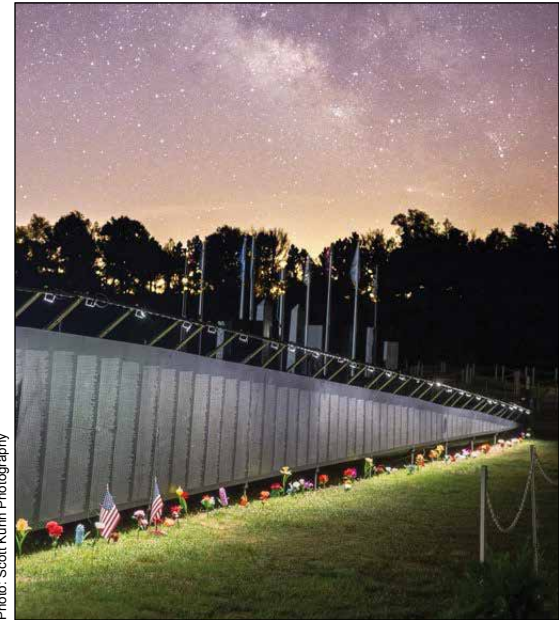


Photo: Scott Kuhn Photography

SDPB brings *The Wall That Heals* to Chamberlain August 10-13.

American Experience: The Great War

Discover through personal stories how WWI transformed America.

Drawing on the latest scholarship, including unpublished diaries, memoirs and letters, **American Experience** *The Great War* tells the rich and complex story of World War I through the voices of nurses, journalists, aviators and the American troops who came to be known as “doughboys.” The series explores the experiences of African-American and Latino soldiers, suffragists, Native-American “code talkers” and others whose participation in the war to “make the world safe for democracy” has been largely forgotten.

The series also explores how a brilliant PR man bolstered support for the war in a country hesitant to put lives on the line for a foreign conflict; how President Woodrow Wilson steered the nation through three-

and-a-half years of neutrality, only to reluctantly lead America into the bloodiest conflict the world had ever seen, thereby transforming the United States into a dominant player on the international stage; and how the ardent patriotism and determination to support America’s crusade for liberty abroad led to one of the most oppressive crackdowns on civil liberties at home in American history.

It is also a story of little-known heroism and sacrifice (including the deadliest battle in American history) that would leave more than 53,000 men dead on the battlefield and more than 60,000 dead from disease. American fatalities would come at a critical time in the war, but they would be dwarfed by a cataclysm of violence that would ultimately claim 15 million lives.

“There’s one America before the

Great War, and another America after,” said *American Experience* producer Mark Samels. “The war marked the first time that the U.S. stepped onto the world stage and became the pre-eminent world power of the 20th century. It changed not only our role in the world but changed us at home. It was a time of stark choices — between pacifism and building up our military, between equal rights for everyone or for only a few. What unfolded was not only extremely important politically, socially and culturally, it was also incredibly dramatic. By examining the war through the lives of individuals — some famous, most forgotten — we hope to have created a film that does justice to this incredibly rich story.”

SDPB1: Monday-Wednesday, April 10-12, 8pm (9 MT)

SDPB2: Thursday-Saturday, April 13-15, 6 & 11pm (5 & 10 MT)

Thank You for Your Gifts to Friends of SDPB

Joyce Bergan, Florence, gave a gift in memory of Ruth Olson, Watertown.

Gloria Hensley, Vermillion, provided a gift in honor of her mother, Gladys Baldwin.

Brad & Carol Johnson, Watertown, gave a gift in memory of Maria McCarthy Anderson, who loved NPR.

Waneen Polly, Watertown, gave a gift in memory of Ruth Olson, Watertown.



New Visionary Society Members

Tower Club

(\$5,000 to \$9,999)

John & Yvonne Adrion, Spearfish

Executive Producers Club

(\$1,000 to \$4,999)

Milt & Chris Carter, Watertown

Lola Dixon, Aberdeen

Boyd & Dody Hopkins, Sioux Falls

Steve Miller & Jennifer May, Rapid City

Norm & Linda Peterson, Rapid City

George A. Rahm, Doland

Richard K. & Marlene Tobias, Rapid City

Thank you for your generous gifts.

To learn how you can support SDPB with your gifts, please call Friends of SDPB at 800-333-0789 or visit SDPB.org and click on "Support SDPB."



Karen Mortimer Joins Friends of SDPB Board



Karen Mortimer.

Friends of SDPB is pleased to announce Karen Mortimer as the newest board member. Mortimer directs the Mniluzahan Okolakiciyapi Ambassadors (MOA). MOA is a project of a John T. Vucurevich Foundation grant, with the support of the Bush Foundation, that works to bridge cultures between Native and non-Native people in the Black Hills region. She has worked in K-12

education and higher education, and currently works with the Rapid City Public School Foundation. "I'm grateful to serve on the Friends of SDPB Board," says Mortimer. "I believe SDPB makes South Dakota a better place to live. I've always been a public broadcasting fan and I've experienced many 'driveway moments.'"

Mortimer holds an undergraduate degree from the University of Minnesota and a graduate degree from the University of Arizona. A mother and grandmother, she lives in Rapid City with her spouse, Sam.



Host Stephanie Rissler meets with panelists from across South Dakota to discuss important issues.

The Shift

How Changing Populations Affect Schools, Businesses, and Hometown Life.

This month, SDPB examines how the effects of shifting populations impact communities and individuals throughout South Dakota. As South Dakotans age and migrate from the countryside to cities like Rapid City and Sioux Falls, metropolitan areas and nearby communities tend to boom while more rural and remote towns slowly bust. SDPB looks at how the institutions that comprise the cornerstones of our communities are altered, including our kids' classrooms and sports teams, as well as main street businesses and organizations.

South Dakota Focus dedicates two shows to the topic of shifting populations in South Dakota. Tune in Thursday, April 13, and Thursday, April 20, at 8pm (7 MT) as host Stephanie Rissler and guests discuss the changing demographic landscape of South Dakota's cities and towns.

And tune in to **In the Moment** on SDPB Radio in April as individuals from around the state discuss how population shrinkage and growth is changing how they live, work, and play in their communities.

Follow the discussion on Facebook and Twitter #sdshift.

SDPB Board Meeting in April

The South Dakota Educational Telecommunications Board meets Wednesday, April 5, at 11:15am at Bracco World Café, 5001 South Western Avenue, Sioux Falls.

The public is invited to attend.

Corporate Support *Our corporate partners continue to support the excellent Television and Radio programming you have come to expect and love from SDPB.*

3M Aberdeen	Dakota Plains New Holland	Hands Around the World	Presentation Sisters of Aberdeen	South Dakota State University
3M Brookings	Dakota State University	Horton Incorporated	Puetz Corporation	South Dakota State University –
Aberdeen Parks, Recreation & Forestry Department	Davenport Evans Lawyers	Hy-Vee Food Stores	Quilters Headquarters	Continuing & Distance Education
Abourezk Law Firm	Deadwood History (Adams Museum & House/Days of '76/Adams Research & Cultural Center)	Independent Insurance Agents of SD	Rapid City Arts Council	South Dakota State University Foundation – Woodbine Productions
Acupuncture 4 Health	Delta Dental of South Dakota	Ingalls Homestead	Rapid City Medical Center	South Dakota Symphony
All Souls Church	DeMersseman, Jensen, Tellinghuisen & Huffman, LLP	Insideout	Regional Health	Southeastern Dental Center – Dr. Daniel Goede
Always Your Design	East Pierre Landscape & Garden Center	Interim HealthCare	Reptile Gardens	Sunset Strip Pawn, Inc.
ArtForms Gallery	East River Electric Power Cooperative	James Leach, Attorney at Law	Rocklands Entertainment	Termosphere Gallery
Arts Rapid City	Emmanuel Episcopal Church	Jim Szana Trio	Sanford Health	The Center for Western Studies
Arts South Dakota	Estes Campbell Law	Jolly Lane Greenhouse	Schmeckfest	The Journey Museum
Bank West	Exceptional Artists	Lake Area Technical Institute	SDN Communications	The Market
Bay Leaf Café	Family Dentistry of Sioux Falls	Lamps and Shades	Sioux Falls Area Community Foundation	Touchstone Energy
Bethesda	Farmers Union Insurance Companies	Laura Ingalls Wilder Pageant Society	Sioux Falls Seminary	Tri-State Livestock News
Black Hills Chamber Music Society	First Bank and Trust	Madison Farmers Elevator	Siouxland Heritage Museums	Turbak Law Office, PC
Black Hills Community Theatre	First Dakota National Bank	Mahlander's	South Dakota Affiliate of the American College of Nurse Midwives	University of Sioux Falls
Black Hills Federal Credit Union	Fischer, Rounds & Associates	McCroly Gardens	South Dakota Agricultural Heritage Museum	University of South Dakota
Black Hills Film Festival	Flooring America	Media One Advertising	South Dakota Art Museum	Vance Thompson Vision
Black Hills Playhouse	Four Bands Community Fund	Missouri River Energy Services	South Dakota Bar Foundation	Viken & Riggins Law Firm
Black Hills State University	Four Seasons Fabric	Murdo Dental – Dr. Aaron Rumpca	South Dakota Community Foundation	Warne Chemical & Equipment Company
Black Hills Symphony	Freedom Forum	National Music Museum	South Dakota Corn	Washington Pavilion
Blackwing Elite Builders	Freeman Academy	North County Fiber Fair	South Dakota Department of Education	Weigum's Great Plains Landscape Arboretum
Bursch Travel	Friends of Aberdeen University/ Civic Symphony	Northern State University	South Dakota Ethanol Producers Association	Westhills Village Retirement Community
Bush Foundation	Gene Hufford Agency, Inc.	NorthWestern Energy	South Dakota Quilters Guild	Xanterra
Capital Services	Good Earth Natural Foods	Ophthalmology Associates	South Dakota Space Grant Consortium	
Catholic United Financial	Gordy Pratt	Ophthalmology LTD	South Dakota State Historical Society	
Chet Groseclose, Prof. LLC	Great Plains Zoo & Delbridge Museum	Orlando Chamber Soloists		
Children's Museum of South Dakota	Habitat for Humanity	Orpheum Theatre		
CO-OP Architecture		Pathway Investment		
Dacotah Bank		Paul Horsted, Dakota Photographic, LLC		
Dacotah Prairie Museum—Granary Rural Cultural Center		Performing Arts Center of Rapid City		
		Prairie Repertory Theatre		

Join us in telling South Dakota's stories. Be an underwriter.

Contact the Corporate Development Manager nearest you.

Michele Slott, West River
800-456-1266

Liz Larkin, East River
800-456-0556



Volume 48 No. 4

Friends of SDPB Office

PO Box 5000
Brookings, SD 57006
(605) 688-4191 or (800) 333-0789

Ryan Howlett, Friends CEO
(800) 456-0556

SDPB Administrative Office

PO Box 5000
Vermillion, SD 57069
(605) 677-5861 or (800) 456-0766

SDPB Home Page

<http://www.SDPB.org>
press@SDPB.org

SDPB Magazine & Promotion Staff

Katy Beem, Editor
Matti Smith, Marketing Manager
Amber Anders, Continuity Director
Dave Foote, Promotion Producer
Heather Benson, Social Media
Kara Brodsky, Intern
Krystal Schoenbauer, Intern

Friends of SDPB Board

President Daniel Leikvold, Lead
Vice President Janelle Krause Toman, Pierre
Tom Manzer, Treasurer, Brookings
Greg Blomberg, Secretary, Sioux Falls
Wayne Carney, Fort Pierre
Sue Gates, Aberdeen
Michael Goodroad, Lead
Thomas E. Graslie, Rapid City
Rebecca Jirava, Brookings
Lizabeth Manning, Spearfish
Katrina Lehr-McKinney, Sioux Falls
Karen Mortimer, Rapid City
Waneen Polly, Watertown
Ron Roehr, Milbank
Prof. Tim Schorn, Vermillion
John Charles Sternquist, Yankton
Lon E. Stroshein, Sioux Falls
Cheryl Eagan Taylor, Sioux Falls
**South Dakota Educational
Telecommunications Board**
Mark Shlanta, Chair, Sioux Falls
Doyle Estes, Hill City
Kay Jorgensen, Spearfish
Rick Knobe, Sioux Falls
Julie Mathiesen, Sturgis
Gerry Schlenker, Canistota
Michael G. Rush, Regents, Pierre

Julie Overgaard, SDPB, Vermillion

David Zolnowsky, BIT, Pierre
SDPB Management Team

Julie Overgaard, Executive Director
Larry Rohrer, Director of Content
SeVern Ashes, Engineering Director
Bob Bosse, Television Director
Cara Hetland, Radio Director
Fritz Miller, Marketing Director
Kent Osborne, Digital Director

– South Dakota Public Broadcasting is a division of the South Dakota Bureau of Information and Telecommunications.

– Friends of SDPB is a 501(c)3 organization.

– SDPB Magazine is printed by Midstates Printing, Aberdeen, SD. Approximately 14,500 copies of the document were printed at an approximate cost of \$.36 per copy. SDPB Magazine (ISSN 1529-1596) is published and mailed monthly for \$10 per year for Friends of SDPB, 815 Medary, Brookings, SD 57006. Periodical postage paid at Brookings, SD, and additional mailing offices.

Postmaster: Send address changes to Friends of SDPB, Box 5000, Brookings, SD 57006. USPS 0764-400





ETHAN BORTNICK

GENERATIONS OF MUSIC

Join piano virtuoso **Ethan Bortnick** with guests the SDSU Concert Choir and Brookings High School Choir – plus a couple of other surprises.

SDPB will record the event which will be produced as a **national PBS special**.

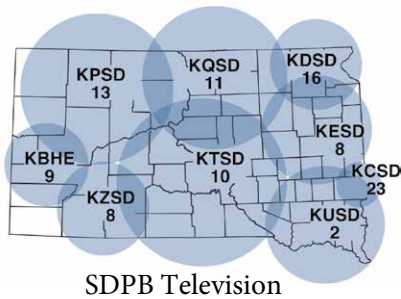
Wednesday, April 26 at 7:00 p.m.

Mary W. Sommervold Hall
Washington Pavilion • Sioux Falls

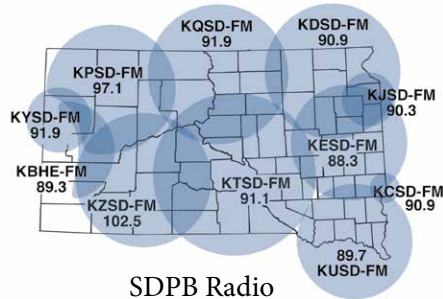


Tickets available at the Washington Pavilion box office
(605) 367-6000 or online at **WashingtonPavilion.org**.

Proceeds benefit Friends of SDPB.



SDPB Television



SDPB Radio

Live and on-demand audio and video at SDPB.org



The number on the top of your address is your membership expiration date. The number on the left is your identification. Please use for membership renewals. This will reduce our processing time and speed up your service.

Printed on Recycled Paper



Independent Lens: Newtown

The story of the aftermath of the deadliest mass shooting of school children and educators in American history. *Newtown* explores what happens to a community after it becomes the epicenter of a national discussion, and what it must cope with after the cameras leave.

SDPB1: Monday, April 3, 8pm (7 MT)

SDPB2: Wednesday, April 5, 6:30 & 11:30pm (5:30 & 10:30 MT)