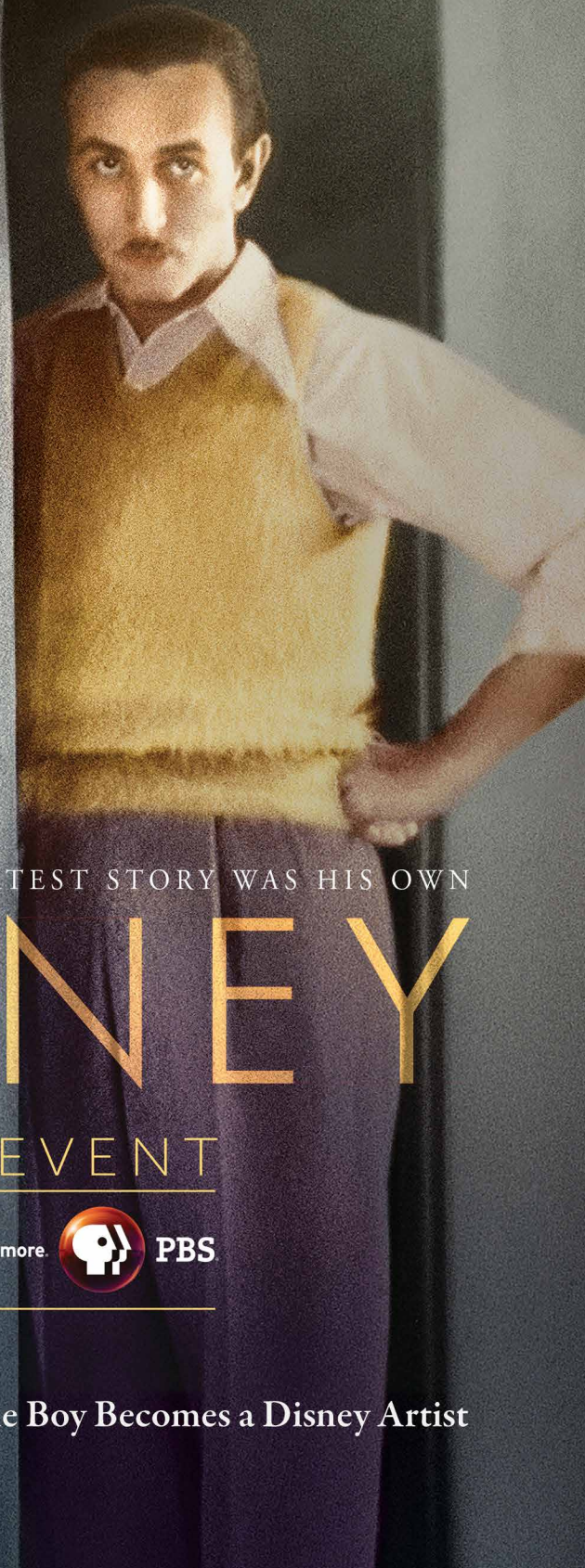


SDPB

Magazine

September 2015



AMERICAN EXPERIENCE

WALT

HIS GREATEST STORY WAS HIS OWN

DISNEY

TWO NIGHT EVENT

MONDAY-TUESDAY

SEPT 14-15 8/7^{MT}

Be more.



PBS

Feature Story: It's a Small World, After All: A Keystone Boy Becomes a Disney Artist



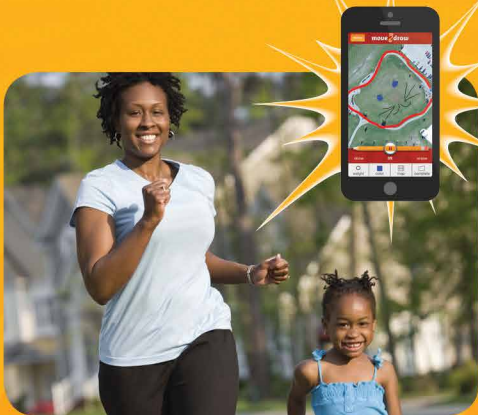
Get ready to get *fit*!

Through *fit*, you can access and experience a suite of resources for parents and kids, all designed to help families make *fit* choices and stay healthy.



For parents

The Sanford *fit*/WebMD website gives parents the tools and resources they need to become healthy role models. Log on to explore healthy recipes, *fit* family challenges and connect with a community of parents and experts for support. Go to webmd.com/parenting/raising-fit-kids.



For kids

The website also offers an experience just for kids. Let them log on and discover entertaining and educational games, videos and challenges. No matter their age, the site has something for all kids to help them make *fit* choices every day and stay *fit* for life. Go to fit.sanfordhealth.org.



On the go

Take *fit* with you wherever you go! Though a series of free and engaging apps, you are never far away from *fit* activities. MOVE2Draw connects fun, friends and *fit* and is a simple and interactive way for kids to move and create their own unique drawings. eMOODicam helps not only capture the moment but also the emotion by allowing kids to bring their feelings to life and share with their friends in an easy-to-use app. Download in your app store today!

Visit us at sanfordhealth.org,
Keyword: *fit*





Student Jennie Hegge films Dr. Holm on-set.

SDPB's medical advice program **On Call with the Prairie Doc** is now in its 14th season. The popular live call-in show is hosted by Dr. Rick Holm, a general internist who practices with Avera Medical Group in Brookings. Dr. Holm graduated from DeSmet High School in 1967 and attended medical school at the University of South Dakota and Emory University in Atlanta. Dr. Holm's quest to provide sound medical advice to the public began in 1989 with the radio show *Holm Spun Medicine*.

Dr. Holm is passionate about providing science-based medical information in the interest of public health. His hope is that the program helps counter what he views as a surplus of misleading or inaccurate information promoted through ads and the internet. "There is so much misinformation about healthcare and it is right to bring cutting-edge information to our viewers," says Dr. Holm. All of the doctors, including Dr. Holm, who appear on the show to share their areas of expertise are volunteers. "Our mission is to support science," says Dr. Holm, "and volunteering our time is how we've been able to do it." As moderator, Dr. Holm says he enjoys the fringe benefit of learning from his colleagues. "Our show on headaches is a great example. I'm a general internist and I feel like I know about a topic and then I learn a lot. A lot of physicians watch the show and use it to gain informa-

tion. I hear that all the time," says Dr. Holm. "My role as moderator is to make the doctors on-camera comfortable and to help them realize that what they are doing is of great value."

The staff and crew who produce the show and screen the on-air calls are also volunteers.

Journalism & Mass Communications students from SDSU work the cameras and studio, while SDSU students in pre-professional programs like Pre-Medicine, Pre-Physician Assistant, and Pre-Pharmacy answer viewers' calls, assisted by Dr. Holm's wife Joanie, a pediatric nurse practitioner. Before each broadcast, the pre-professional students interview the guest doctors to learn more about their areas of specialization.

By design, program topics address common medical ailments such as rashes, signs of a heart attack, or abdominal pain. "Ask anything" shows air at least three times a year. While the show is supported by Avera and DakotaCare, no funding is received from pharmaceutical companies or entities that could jeopardize the program's mission to advance useful, evidence-based medical information. "I receive tremendous reward for it," says Dr. Holm. "It's doing the right thing."

On Call with the Prairie Doc airs on SDPB1 Thursdays at 7pm (6 MT) and on SDPB2 Mondays at 11am (10 MT) and Wednesdays at 4pm (3 MT).



Dr. Larissa Bennis, Dr. Ellen Hopper and Dr. Rick Holm discuss women's health issues.



"Prairie Doc Assistant" and graduate student Kyle Hain answers a phone call during a live episode of *On Call*.

September program topics:

Sept 3 – *Heart Wisdom* with Dr. Mike Hibbard, Cardiologist

Sept 10 – *Suicide Prevention* with Dr. Shawn VanGerpen, Child Psychiatrist

Sept 17 – *Dental & Oral Health Issues* with Dr. Mark Bubak & Dr. Erin Diers

Sept 24 - *The Human - Animal Disease Connection* with Lon Kightlinger, State Epidemiologist & Mary Nettleman

It's a Small World After All: A Keystone Boy Becomes a Disney Artist

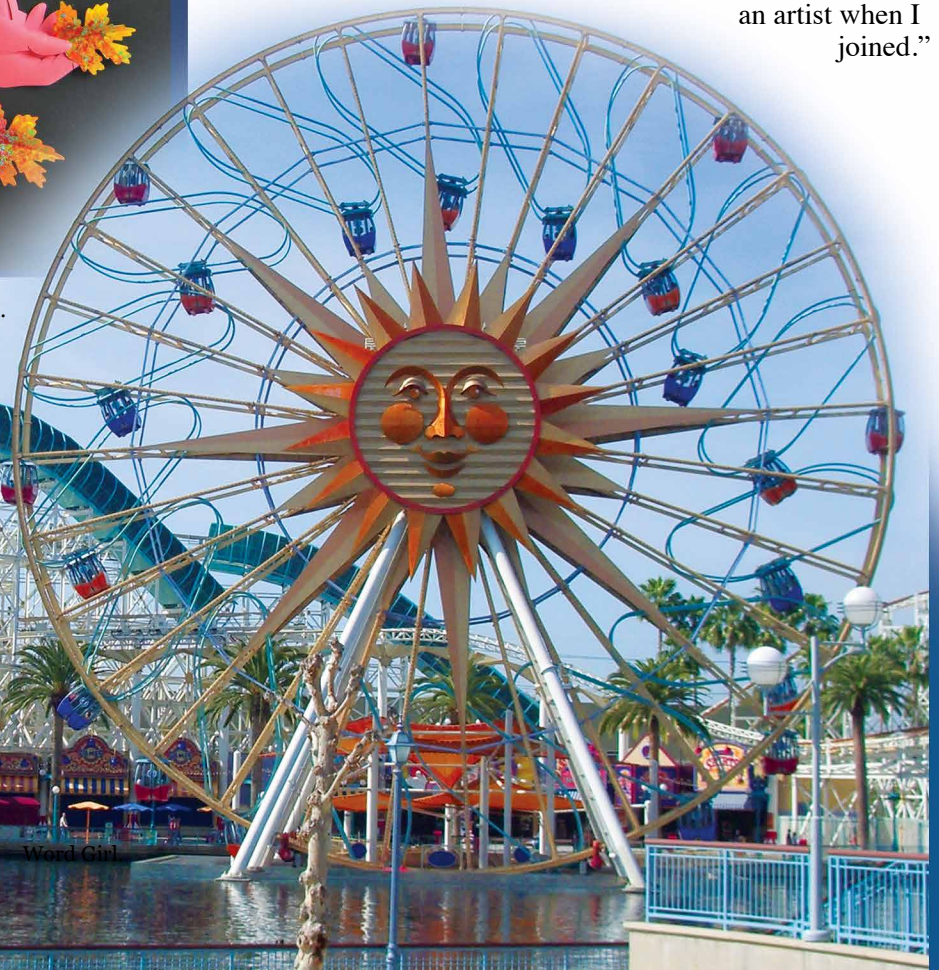
On September 14, PBS premieres **American Experience: Walt Disney**, a two-part, four-hour documentary profiling Disney's ascendancy from unknown cartoonist to global entertainment mogul. Today, animated films like *Minions* and *Inside Out* often dominate box office sales. Millions of families travel to studio theme parks for Harry Potter-themed vacations or for simulated high-speed car chases like the Fast and Furious Ride. But once upon a time, a youthful

and enterprising Walt Disney had to convince film distributors and investors that cartoons can be artful and fantasy-based family vacations could be lucrative. Film Historian Sarah Nilsen in the Disney documentary notes, "All of those animators thrived because Disney sets it up as a legitimate profession. [He said] 'I will recognize your talent, I will pay you well.'"

It can be easy to forget it was not always a small world, after all, for artists and consumers of commercial art. But artist Leo Monahan, who spent his childhood in Keystone, SD and graduated from Lead in 1950, can recall an era when art, design, and animation were initially merging to help create the entertainment industry with which we are so familiar today. After serving in Korea, Monahan enrolled as an art student at the Chouinard Art Institute in Los Angeles. "I spent a lot of time alone drawing as a little boy during the snowstorms in the Black Hills," says Monahan, whose grandfather and uncle, Oscar and Bud Sagdalen, were carvers on Mount Rushmore. "And I did cartoons of other sailors in the Navy, but I never expected to be an artist when I joined."



(Above) "Leaf Hands Color Wheel" by Leo Monahan.
(Right) Ferris Wheel at Disney's California Adventure, designed by Monahan.





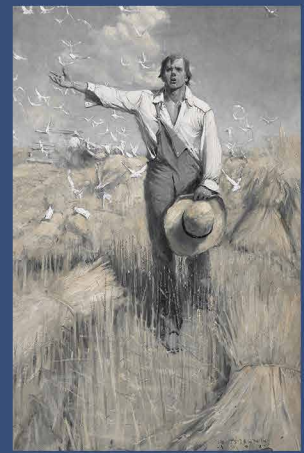
Entrance to It's a Small World at Disneyland.



Leo Monahan.



"Art Noveau Orchid" by Leo Monahan.



"Harvest Orator" by Harvey Dunn.

At Chouinard, Monahan was named the first recipient of the prestigious Disney Scholarship – an award he went on to win four times in a row. “I went over to Disney Studios every semester and thanked Walt Disney for the scholarship,” says Monahan. “He knew what he wanted,” Monahan says of Disney. “He was a very strong individual. He was a legend in his own time.” Disney and his brother Roy later merged Chouinard and the Los Angeles Conservatory of Music to form the California Institute of Arts, which was integral to the expansion of Disney’s film and theme park industry. Experts from CalArts were invited to Disney to lecture on expressionism, impressionism, cubism, and the Mexican muralists. This included Monahan, who worked as an instructor teaching basic design and color to Disney engineers. “My students were not necessarily artists,” says Monahan. “They were the Imagineers who built the parks. They needed to know the language, how to talk about elements and principles and how to use color.”

Monahan was soon hired as a contractor at Disney for his talents as an illustrator, graphic designer and paper sculptor. His designs and sculptures have been realized into attractions at Disney theme parks in California, Florida, Paris and Japan. “I made 3D models out of paper,” says Monahan. “What I could do in paper, the engineers could do in steel. Disney bought me for ideas for 20-some years.” Monahan’s countless contributions to Disney’s theme parks include the entrance to It’s A Small

World at Disneyland as well as the ferris wheel at California Adventure.

The U. S. government also enlisted Monahan’s creative talents. Monahan was among artists flown to Vietnam during the war there to document air force activities with drawings and paintings featuring subjects like air patrols and downtown Saigon. Like South Dakota-born Harvey Dunn before him, Monahan used illustration to depict the events and emotions of an exceptional period in history. In this way, Monahan and Dunn serve as reminders of the role of artists not only in entertainment but in historical storytelling and sense-making. Jodi Lundgren, Curator & Coordinator of Exhibitions at the South Dakota Art Museum, home to the Harvey Dunn collection, sees parallels between Dunn and Walt Disney. “Dunn was an important part of the history of illustration at the end of its peak before animation took off in film and television – which are basically animated illustrations – in Disney’s time,” says Lundgren. “Dunn took an artful approach to his work. He is a classic example of illustrators being artists in the work that they do and that work being rightfully called both illustration and art.” Monahan echoes the opinion that art has significance and application in the everyday world. “Everything you see around you has been touched by an artist,” says Monahan. “From advertisements, to cups, logos, even things that are farmed and mined that we buy in stores – ultimately, the advertising, design, and packaging has been done by an artist or colored by a colorist.

It’s one of the biggest professions in the world.”

After a successful, life-long career as a commercial artist, including going out on patrols to draw illustrations for the L.A. County Sheriff’s documentary art program, Monahan now concentrates on his fine art and paper sculpture. According to Monahan, some of his art and sculptures are inspired by Black Hills nature and medicine bundles, which he learned about over 70 years ago from Ben Black Elk, the famous Lakota storyteller and greeter at Mount Rushmore. Monahan cites Black Elk as a mentor and neighbor during his childhood in Keystone.

Reflecting on Disney’s legacy, Monahan points to the profound effect the once-struggling cartoonist and dreamer has had on the world. “Disney brought a fantasy element to the U.S. that has become an integral part of our culture,” says Monahan. “They are fantasy, but beautifully done. The submarine ride is a fantasy ride. How many people ever get to actually go on a submarine? Disney invented a cultural event.” A cultural event that continues to influence the world – helped along by a budding young artist from South Dakota.

American Experience: Walt Disney

SDPB1:

Part 1 - Monday, Sept 14, 8 pm (7 MT)

Part 2 - Tuesday, Sept 15, 8 pm (7 MT)

SDPB-TV Daytime Programming

Primetime listings on pages 8-15

SDPB1	WEEKDAYS	SATURDAYS	SUNDAYS
5am / 4 MT	Newsline	Knitting Daily	Dakota Life ▼
5:30/4:30 MT	Yoga	Dakota Life ▼	Peep & the Big Wide World
6am / 5 MT	BBC World News	Barney & Friends	Curious George
6:30/5:30 MT	Caillou	Angelina Ballerina	Curious George
7am / 6 MT	Curious George	Curious George	Daniel Tiger's Neighborhood
7:30/6:30 MT	Curious George	Curious George	Daniel Tiger's Neighborhood
8am / 7 MT	Daniel Tiger's Neighborhood	Daniel Tiger's Neighborhood	Sesame Street Shorts
8:30/7:30 MT	Daniel Tiger's Neighborhood	Daniel Tiger's Neighborhood	Super Why!
9am / 8 MT	Clifford the Big Red Dog	WordWorld	Dinosaur Train
9:30/8:30 MT	Thomas & Friends	Bob the Builder	WordGirl
10am / 9 MT	Dinosaur Train	It's Sew Easy	Cat in the Hat Knows a Lot About That
10:30/9:30 MT	Dinosaur Train	Fons & Porter's Love of Quilting	Religion & Ethics Newsweekly
11am / 10 MT	Peg + Cat	Quilt in a Day	McLaughlin Group
11:30/10:30MT	Sid the Science Kid	Sewing with Nancy	Market to Market
Noon / 11 MT	Sesame Street	Quilting Arts	Native Report
12:30/11:30MT		Rough Cut – Woodworking	Motorweek
1pm / Noon MT	Sesame Street Shorts	Woodsmith Shop	Repeat of previous Thursday 8pm (7 MT)
1:30/12:30 MT	Cat in the Hat Knows a Lot about That	This Old House Hour	
2pm / 1 MT	Curious George	BBQ With Franklin	Documentary, news, science, nature
2:30/1:30 MT	Educational programming		
3pm / 2 MT	Arthur		
3:30/2:30MT	Odd Squad	The Victory Garden's Edible Feast	Rick Steves' Europe
4pm / 3 MT	Wild Kratts	Prairie Yard & Garden	
4:30 / 3:30 MT	Cyberchase	America's Heartland	Nature Adventures ▼
5pm / 4 MT	Martha Speaks	Classic Gospel	Antiques Roadshow
5:30 / 4:30 MT	Nightly Business Report		

SDPB2	MONDAYS	TUESDAYS	WEDNESDAYS	THURSDAYS	FRIDAYS	SATURDAYS	SUNDAYS	
5am / 4 MT	Newsline	Newsline	Newsline	Newsline	Newsline	Religion & Ethics	To the Contrary	
5:30/4:30 MT	Tavis Smiley	Tavis Smiley	Tavis Smiley	Tavis Smiley	Tavis Smiley	Wealthtrack	Washington Week	
6am / 5 MT	Washington Week	Global 3000	To the Contrary	Scully/World Show	Well Read	To the Contrary	McLaughlin Group	
6:30/5:30 MT	Religion & Ethics	Focus on Europe	Wealthtrack	Second Opinion	Closer to Truth	McLaughlin Group	Charlie Rose	
7am / 6 MT	Documentary, news, science, nature & repeats of previous day's SDPB2 primetime programming	Documentary, news, science, nature & repeats of previous day's SDPB2 primetime programming	America ReFramed followed by documentary, news, science, nature & repeats of previous day's SDPB2 primetime programming	Documentary, news, science, nature & repeats of previous day's SDPB2 primetime programming	Documentary, news, science, nature & repeats of previous day's SDPB2 primetime.	Documentary, news, science, nature & repeats of previous day's SDPB2 primetime programming	Focus on Europe	
7:30/6:30 MT							Global 3000	
8am / 7 MT							America ReFramed	
8:30/7:30 MT								
9am / 8 MT							Local USA	
9:30/8:30 MT								
10am / 9 MT							Wealthtrack	
10:30/9:30 MT							Religion & Ethics	
11am / 10 MT							Documentary, news, science, nature	
11:30/10:30MT								
Noon / 11 MT	Washington Week	Global 3000	To the Contrary	Scully/World Show	Well Read	History, Documentary & repeats of top programming from previous week	To the Contrary	
12:30/11:30MT	Religion & Ethics	Focus on Europe	Wealthtrack	Second Opinion	Closer to Truth		Washington Week	
1pm / Noon MT	Documentary, news, science, nature	Documentary, news, science, nature & repeats of previous day's SDPB2 primetime programming	America ReFramed followed by documentary, news, science, nature & repeats of previous day's SDPB2 primetime programming	Documentary, news, science, nature & repeats of previous day's SDPB2 primetime programming	Documentary, news, science, nature & repeats of previous day's SDPB2 primetime programming		McLaughlin Group	
1:30/12:30 MT								Charlie Rose
2pm / 1 MT								Focus on Europe
2:30/1:30 MT								Global 3000
3pm/2 MT								Washington Week
3:30/2:30MT								Global 3000
4pm / 3 MT	Newsline	Newsline	On Call ▼	Newsline	Newsline		To The Contrary	Documentary
4:30 / 3:30 MT	DW News	DW News	Frontline	DW News	DW News		Washington Week	
5pm / 4 MT	Local USA	Documentary		Documentary	Documentary	NewsHour Wkend	NewsHour Wkend	
5:30 / 4:30 MT	Film School Shorts		Charlie Rose				Dakota Life ▼	

Create – SDPB3 Programming

SDPB3	SUNDAY & WEDNESDAY		MONDAY & FRIDAY	TUESDAY & THURSDAY	SATURDAY THEME DAYS	
5am / 4 MT	It's Sew Easy		Quilting Arts	Knit & Crochet Now!	September 5 "Franklin's Que"	
5:30/4:30 MT	Simply Painting Around the World		Painting the Town	Joy of Painting		
6am / 5 MT	Mexico – One Plate at a Time		Sara's Weeknight Meals	Chef John/Cooking with Nick (9/8)		
6:30/5:30 MT	Primal Grill		Healthful Indian Flavors with Ala	George Hirsch Lifestyle		
7am / 6 MT	Barbeque University		Martin Yan's Taste of Vietnam	Dining with the Chef		
7:30/6:30 MT	Ciao Italia		Taste Islands/Scandinavian Cooking (9/11)	Christina Cooks		
8am / 7 MT	Pedal America		Various	Travels & Trad./Rudy Maxa's (9/17)		
8:30/7:30 MT	Family Travel			Mineral Exp/Rhythm Abroad (9/10)		
9am / 8 MT	Lakota Berenstain	Ask This Old House	This Old House	Woodwright's Shop		September 12 "New York: Foods of the World"
9:30/8:30 MT	American Woodshop		Rough Cut – Woodworking	Woodturning Workshop		
10am / 9 MT	Growing A Greener World/Garden Smart		P. Allen Smith's Garden Home	The Victory Garden's Edible Feast		
10:30/9:30 MT	Vintage		Beads, Baubles & Jewels/Craftsman (9/21)	For Your Home		
11am / 10 MT	Various	It's Sew Easy	Quilting Arts	Knit & Crochet Now!	September 19 "Hispanic Heritage"	
11:30/10:30MT	Various	Simply Painting	Painting the Town	Joy of Painting		
Noon/ 11 MT	Dinosaur Train	One Plate at a Time	Sara's Weeknight Meals	Chef John/Cooking with Nick Stellino		
12:30/11:30MT	Peg + Cat	Primal Grill	Healthful Indian Flavors with Ala	George Hirsch Lifestyle		
1pm/ Noon MT	Cat in the Hat	Barbeque U	Martin Yan's Tasts of Vietnam	Dining with the Chef		
1:30/12:30 MT	Odd Squad	Ciao Italia	Taste the Islands/Scandinavian Cooking	Christina Cooks		
2pm/ 1 MT	Wild Kratts	Pedal America	Various	Travel & Trad./Rudy Maxa's World		
2:30/1:30 MT	Arthur	Family Travel		Mineral Explorers/Rhythm Abroad		
3pm/2 MT	Cyberchase	Rick Steves	Rick Steves' Europe	Rick Steves' Europe		
3:30/2:30MT	Barney & Friends	Amer. Woodshop	Rough Cut – Woodworking	Woodturning Workshop		
4pm/ 3 MT	Mister Rogers	Garden Smart	P. Allen Smith's Garden Home	The Victory Garden's Edible Feast		
4:30/3:30MT	Maya & Miguel	Vintage	Beads, Baubles & Jewels/Craftsman	For Your Home		
5pm / 4 MT	Berenstain Bears	Ask This Old House	This Old House	Woodwright's Shop		
5:30/4:30 MT	Clifford	BBQ With Franklin	BBQ with Franklin/Project Smoke (9/18)	BBQ w/ Franklin/ Project Smoke (9/22)		
6pm / 5 MT	Pati's Mexican Table		Simply Ming	Moveable Feast	September 26 "On Safari"	
6:30/5:30 MT	Essential Pepin		Essential Pepin	Baking with Julia		
7pm / 6 MT	Martha Bakes	Lidia's Kitchen	Lidia's Kitchen	Martha Bakes		
7:30/6:30 MT	Amer. Test Kitchen	Cook's Country	Cook's Country	America's Test Kitchen		
8pm / 7 MT	Chef's Life	JoAnne Weir	Joanne Weir Gets Fresh	Chef's Life		
8:30/7:30 MT	BBQ with Franklin		BBQ with Franklin/Project Smoke	BBQ with Franklin/Project Smoke		
9pm / 8 MT	Ask This Old House		This Old House	Woodwright's Shop		
9:30/8:30 MT	Rick Steves' Europe		Rick Steves' Europe	Rick Steves' Europe		
10pm / 9 MT	Music Voyager		Travelscope	In the Americas		
10:30/9:30 MT	Martha Bakes	Lidia's Kitchen	Lidia's Kitchen	Martha Bakes		
11pm / 10 MT	Amer. Test Kitchen	Cook's Country	Cook's Country	America's Test Kitchen		
11:30/10:30MT	Pati's Mexican Table		Simply Ming	Moveable Feast		
Mid./ 11 MT	Mexico – One Plate at a Time		Sara's Weeknight Meals	Chef John/Cooking with Nick Stellino		
12:30/11:30MT	Rick Steves' Europe		Rick Steves' Europe	Rick Steves' Europe		
1am/Mid. MT	Martha Bakes	Lidia's Kitchen	Lidia's Kitchen	Martha Bakes		
1:30/12:30 MT	America's Test Kitchen/ Cook's Country		Cook's Country	America's Test Kitchen		
2am/ 1 MT	Taste of Vietnam	JoAnne Weir	JoAnne Weir Gets Fresh	Chef's Life		
2:30/1:30 MT	BBQ With Franklin		BBQ with Franklin/Project Smoke	BBQ With Franklin/Project Smoke		
3am/2 MT	Ask This Old House		This Old House	Woodwright's Shop		
3:30/2:30MT	Rick Steves' Europe		Rick Steves' Europe	Rick Steves' Europe		
4am/3 MT	Music Voyager		Travelscope	In the Americas		
4:30/3:30 MT	Martha Bakes	Lidia's Kitchen	Lidia's Kitchen	Martha Bakes		


- SDPB Television programs are Closed Captioned for the Hearing Impaired.
- Schedule is subject to change. Visit SDPB.org/tvschedules for program details and schedule changes.
-  Indicates locally produced programming.
- SDPB2 and SDPB3 are available free over-the-air via antenna and on most cable systems. Call your local provider to find out where you can find them on your cable system.



Photo: WGBH

Almost a century ago, paleontologists found fossil bones from a dinosaur that was bigger than Tyrannosaurus rex. The Spinosaurus fossils were destroyed in a WWII bombing raid. Now, the discovery of new bones in Morocco is reopening the investigation into this epic beast. On **NOVA: Bigger Than T. Rex**, follow the paleontologists who are reconstructing this terrifying carnivore, a 53-foot-long behemoth with a huge dorsal sail, scimitar-like claws and superjaws. Bringing together experts in paleontology, geology, climatology and paleobotany, this special brings to life the lost world over which Spinosaurus reigned more than 65 million years ago.

SDPB1: Wednesday, Sept 2, 8pm (7 MT)
SDPB2: Thursday, Sept 3, 6pm (5 MT)

TUESDAY – SEPTEMBER 1

SDPB1
6:00 (5:00 MT) PBS NewsHour
6:58 (5:58 MT) Business News Brief
7:00 (6:00 MT) Big Blue Live
8:00 (7:00 MT) In Their Own Words
9:00 (8:00 MT) Frontline *Putin's Way*
10:00 (9:00 MT) Keeping Up Appearances
10:30 (9:30 MT) BBC World News
11:00 (10:00 MT) Charlie Rose
Midnight (11:00 MT) Tavis Smiley

SDPB2
6:00 (5:00 MT) 1964: The Fight for a Right
7:00 (6:00 MT) America ReFramed *Downeast*
8:30 (7:30 MT) New Environmentalists
9:00 (8:00 MT) PBS NewsHour
10:00 (9:00 MT) Nightly Business Report
10:30 (9:30 MT) DW News
11:00 (10:00 MT) America ReFramed *Downeast*

WEDNESDAY – SEPTEMBER 2

SDPB1
6:00 (5:00 MT) PBS NewsHour
6:58 (5:58 MT) Business News Brief
7:00 (6:00 MT) Big Blue Live
8:00 (7:00 MT) NOVA *Bigger Than T. Rex*
9:00 (8:00 MT) Earth A New Wild
10:00 (9:00 MT) Vicious
10:30 (9:30 MT) BBC World News
11:00 (10:00 MT) Charlie Rose
Midnight (11:00 MT) Tavis Smiley

SDPB2
6:00 (5:00 MT) India Awakes
7:00 (6:00 MT) POV *The Storm Makers*

8:00 (7:00 MT) Frontline *Putin's Way*
9:00 (8:00 MT) PBS NewsHour
10:00 (9:00 MT) Nightly Business Report
11:00 (10:00 MT) India Awakes
Midnight (11:00 MT) POV *The Storm Makers*

THURSDAY – SEPTEMBER 3

SDPB1
6:00 (5:00 MT) PBS NewsHour
6:58 (5:58 MT) Business News Brief
7:00 (6:00 MT) On Call ▼
8:00 (7:00 MT) Dakota Life ▼
9:00 (8:00 MT) Father Brown
9:54 (8:54 MT) Stargazers
10:00 (9:00 MT) As Time Goes By
10:30 (9:30 MT) BBC World News
11:00 (10:00 MT) Charlie Rose
Midnight (11:00 MT) Tavis Smiley

SDPB2
6:00 (5:00 MT) NOVA *Bigger Than T. Rex*
7:00 (6:00 MT) Skeletons of the Sahara
8:00 (7:00 MT) Rise of the Black Pharaohs
9:00 (8:00 MT) PBS NewsHour



Photo: Corbis

On **American Masters: Althea**, uncover the story of Althea Gibson (1927-2003), who emerged as the unlikely queen of the segregated tennis world of the 1950s. She was the first African American to win Wimbledon and the U.S. Nationals (precursor of the U.S. Open) — a decade before Arthur Ashe. The documentary explores her mentoring by boxer Sugar Ray Robinson, former New York City mayor David Dinkins and others. Interviewees include Dinkins, Wimbledon champion Dick Savitt and Billie Jean King.

SDPB1: Friday, Sept 4, 9pm (8 MT)
SDPB2: Sunday, Sept 6, 7:30pm (6:30 MT)

10:00 (9:00 MT) Nightly Business Report
10:30 (9:30 MT) DW News
11:00 (10:00 MT) NOVA *Bigger Than T. Rex*
Midnight (11:00 MT) Skeletons of the Sahara

FRIDAY – SEPTEMBER 4

SDPB1
6:00 (5:00 MT) PBS NewsHour
6:58 (5:58 MT) Business News Brief
7:00 (6:00 MT) Washington Week
7:30 (6:30 MT) Charlie Rose – The Week
8:00 (7:00 MT) McLaughlin Group
8:30 (7:30 MT) Market to Market
9:00 (8:00 MT) American Masters *Althea*
10:30 (9:30 MT) BBC World News
11:00 (10:00 MT) Charlie Rose
Midnight (11:00 MT) Tavis Smiley

SDPB2
6:00 (5:00 MT) Secrets of Westminster
7:00 (6:00 MT) In Their Own Words *Queen Elizabeth II*
8:00 (7:00 MT) Secrets of Althorp – The Spencers
9:00 (8:00 MT) PBS NewsHour
10:00 (9:00 MT) Nightly Business Report
10:30 (9:30 MT) DW News
11:00 (10:00 MT) Secrets of Westminster
Midnight (11:00 MT) In Their Own Words *Queen Elizabeth II*

SATURDAY – SEPTEMBER 5

SDPB1
6:00 (5:00 MT) Lawrence Welk Show
7:00 (6:00 MT) Doc Martin
8:00 (7:00 MT) Best of Jazzfest ▼
10:00 (9:00 MT) No Cover, No Minimum ▼
Big Head Todd & the Monsters
11:00 (10:00 MT) Austin City Limits *The Black Keys/ J. Roddy Walston & The Business*
Midnight (11:00 MT) Front and Center *Richie Sambora*

SDPB2
1:00 (Noon MT) Secrets of Westminster
2:00 (1:00 MT) In Their Own Words *Queen Elizabeth II*
3:00 (2:00 MT) Secrets of Althorp – The Spencers
4:00 (3:00 MT) To the Contrary
4:30 (3:30 MT) Washington Week with Gwen Ifill
5:00 (4:00 MT) PBS NewsHour Weekend
5:30 (4:30 MT) Charlie Rose – The Week
6:00 (5:00 MT) Focus On Europe
6:30 (5:30 MT) Global 3000
7:00 (6:00 MT) Pioneers of Television
9:00 (8:00 MT) America ReFramed *Downeast*
10:30 (9:30 MT) New Environmentalists
11:00 (10:00 MT) Pioneers of Television



Photo: Glanna Saviole

Legend paints the wolverine as a solitary, blood-thirsty killer that roams the icy heart of the frozen north, taking down prey as large as moose, crushing bones to powder with its powerful jaws. But there is another image of the wolverine that is just beginning to emerge, one that is far more complex than its reputation suggests. **NATURE Wolverine: Chasing the Phantom** takes viewers into the secretive world of the largest and least-known member of the weasel family to reveal who this dynamic little devil truly is. Hard-wired to endure an environment of scarcity, the wolverine is one of the most efficient and resourceful carnivores on Earth.
SDPB1: Wednesday, Sept 9, 7pm (6 MT)
SDPB2: Sunday, Sept 13, 7pm (6 MT)

SUNDAY – SEPTEMBER 6

SDPB1

- 1:00 (Noon MT) **Dakota Life** ▼
- 2:00 (1:00 MT) **Civil War: The Untold Story**
- 4:00 (3:00 MT) **Rick Steves' Europe**
- 4:30 (3:30 MT) **Nature Adventures** ▼
- 5:00 (4:00 MT) **Antiques Roadshow** *Myrtle Beach, Hour Two*
- 6:00 (5:00 MT) **Great British Baking Show** *Cakes*
- 7:00 (6:00 MT) **Arthur & George on Masterpiece**
- 8:00 (7:00 MT) **Masterpiece Mystery! Sherlock: the Empty Hearse**
- 9:30 (8:30 MT) **Vicious**
- 10:00 (9:00 MT) **Richard Bangs' Adventures with Purpose**
- 11:00 (10:00 MT) **Globe Trekker**
- Midnight (11:00 MT) **Washington Week with Gwen Ifill**

SDPB2

- 2:00 (1:00 MT) **Great Performances at the Met** *Cavalleria Rusticana/Pagliacci*
- 5:00 (4:00 MT) **PBS NewsHour Weekend**
- 5:30 (4:30 MT) **New Environmentalists**
- 6:00 (5:00 MT) **American Masters** *Billie Jean King/Althea*
- 9:00 (8:00 MT) **African Americans: Many Rivers To Cross**
- 10:00 (9:00 MT) **India Awakes**
- 11:00 (10:00 MT) **One Night in March**
- 11:30 (10:30 MT) **American Masters** *Althea*

MONDAY – SEPTEMBER 7

SDPB1

- 6:00 (5:00 MT) **PBS NewsHour**
- 7:00 (6:00 MT) **Antiques Roadshow** *Myrtle Beach, Hour Three*
- 8:00 (7:00 MT) **The Civil War**
- 10:00 (9:00 MT) **Red Green Show**
- 10:24 (9:24 MT) **Stargazers**

- 10:30 (9:30 MT) **BBC World News**
- 11:00 (10:00 MT) **Charlie Rose**
- Midnight (11:00 MT) **Tavis Smiley**

SDPB2

- 6:00 (5:00 MT) **How We Got to Now**
- 8:00 (7:00 MT) **Local USA**
- 8:30 (7:30 MT) **Film School Shorts**
- 9:00 (8:00 MT) **PBS NewsHour**
- 10:00 (9:00 MT) **Nightly Business Report**
- 10:30 (9:30 MT) **DW News**
- 11:00 (10:00 MT) **How We Got to Now**

TUESDAY – SEPTEMBER 8

SDPB1

- 6:00 (5:00 MT) **PBS NewsHour**
- 6:58 (5:58 MT) **Business News Brief**
- 7:00 (6:00 MT) **In Their Own Words** *Muhammad Ali*
- 8:00 (7:00 MT) **The Civil War**
- 10:30 (9:30 MT) **BBC World News**
- 11:00 (10:00 MT) **Charlie Rose**
- Midnight (11:00 MT) **Tavis Smiley**

SDPB2

- 6:00 (5:00 MT) **Independent Lens** *Powerless*
- 7:00 (6:00 MT) **America ReFramed** *9-Man*
- 9:00 (8:00 MT) **PBS NewsHour**
- 10:00 (9:00 MT) **Nightly Business Report**
- 10:30 (9:30 MT) **DW News**
- 11:00 (10:00 MT) **American ReFramed** *9-Man*

WEDNESDAY – SEPTEMBER 9

SDPB1

- 6:00 (5:00 MT) **PBS NewsHour**
- 6:58 (5:58 MT) **Business News Brief**
- 7:00 (6:00 MT) **Nature** *Wolverine: Chasing the Phantom*
- 8:00 (7:00 MT) **The Civil War**
- 11:00 (10:00 MT) **Charlie Rose**
- Midnight (11:00 MT) **Tavis Smiley**

SDPB2

- 5:00 (4:00 MT) **Independent Lens** *Powerless*
- 6:00 (5:00 MT) **Independent Lens** *Blood Brother*
- 7:30 (6:30 MT) **Independent Lens** *Bully*

- 9:00 (8:00 MT) **PBS NewsHour**
- 10:00 (9:00 MT) **Nightly Business Report**
- 10:30 (9:30 MT) **DW News**
- 11:00 (10:00 MT) **America ReFramed** *9-Man*

THURSDAY – SEPTEMBER 10

SDPB1

- 6:00 (5:00 MT) **PBS NewsHour**
- 6:58 (5:58 MT) **Business News Brief**
- 7:00 (6:00 MT) **On Call** ▼
- 8:00 (7:00 MT) **The Civil War**
- 10:30 (9:30 MT) **BBC World News**
- 11:00 (10:00 MT) **Charlie Rose**
- Midnight (11:00 MT) **Tavis Smiley**

SDPB2

- 6:00 (5:00 MT) **Chasing Shackleton**
- 9:00 (8:00 MT) **PBS NewsHour**
- 10:00 (9:00 MT) **Nightly Business Report**
- 10:30 (9:30 MT) **DW News**
- 11:00 (10:00 MT) **Chasing Shackleton**

FRIDAY – SEPTEMBER 11

SDPB1

- 6:00 (5:00 MT) **PBS NewsHour**
- 6:58 (5:58 MT) **Business News Brief**
- 7:00 (6:00 MT) **Washington Week with Gwen Ifill**
- 7:30 (6:30 MT) **Charlie Rose – The Week**
- 8:00 (7:00 MT) **The Civil War**
- 10:30 (9:30 MT) **BBC World News**
- 11:00 (10:00 MT) **Charlie Rose**
- Midnight (11:00 MT) **Tavis Smiley**

SDPB2

- 6:30 (5:30 MT) **In Their Own Words** *Muhammad Ali*
- 7:30 (6:30 MT) **Independent Lens** *The Trials of Muhammad Ali*
- 9:00 (8:00 MT) **PBS NewsHour**
- 10:00 (9:00 MT) **Nightly Business Report**
- 10:30 (9:30 MT) **DW News**
- 11:00 (10:00 MT) **In Their Own Words** *Muhammad Ali*
- Midnight (11:00 MT) **Independent Lens** *The Trials of Muhammad Ali*

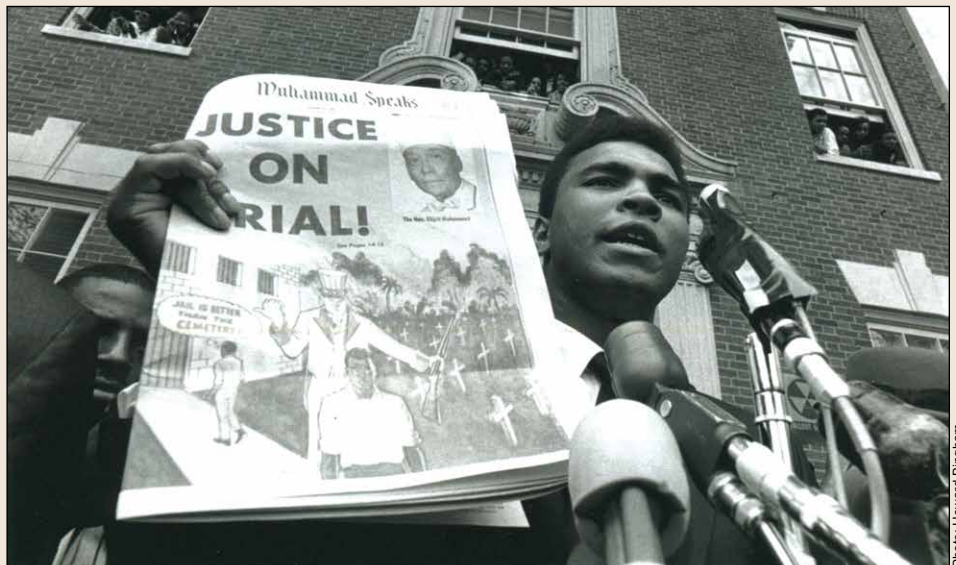


Photo: Howard Bingham

On **In Their Own Words: Muhammad Ali**, follow the great fighter's path from a gym in Louisville to boxing successes, conversion to Islam, opposition to the draft, exile from the ring, comeback fights, Parkinson's disease and his inspirational re-emergence at the Atlanta Olympics.

- SDPB1: Tuesday, Sept 8, 7pm (6 MT)
- SDPB2: Friday, Sept 11, 6:30pm (5:30 MT); 11pm (10 MT)

SATURDAY – SEPTEMBER 12

SDPB1

- 6:00 (5:00 MT) **Lawrence Welk Show**
- 7:00 (6:00 MT) **Doc Martin**
- 8:00 (7:00 MT) **Keeping Up Appearances**
- 8:30 (7:30 MT) **As Time Goes By**
- 9:00 (8:00 MT) **Father Brown**
- 9:54 (8:54 MT) **Stargazers**
- 10:00 (9:00 MT) **No Cover, No Minimum** ▼
Joe Bonamassa
- 11:00 (10:00 MT) **Austin City Limits Sam Smith/Future Islands**
- Midnight (11:00 MT) Bluegrass Underground**
Leftover Salmon

SDPB2

- 1:00 (Noon MT) **In Their Own Words**
- 2:00 (1:00 MT) **Independent Lens** *The Trials of Muhammad Ali*
- 3:30 (2:30 MT) **Local USA**
- 4:00 (3:00 MT) **To the Contrary with Bonnie Erbe**
- 4:30 (3:30 MT) **Washington Week with Gwen Ifill**
- 5:00 (4:00 MT) **PBS NewsHour Weekend**
- 5:30 (4:30 MT) **Charlie Rose – The Week**
- 6:00 (5:00 MT) **Focus on Europe**
- 6:30 (5:30 MT) **Global 3000**
- 7:00 (6:00 MT) **Pioneers of Television**
- 9:00 (8:00 MT) **America ReFramed 9-Man**
- 11:00 (10:00 MT) **Pioneers of Television**

SUNDAY – SEPTEMBER 13

SDPB1

- 1:00 (Noon MT) **Stavig Letters** ▼
- 2:00 (1:00 MT) **Civil War: The Untold Story**
- 4:00 (3:00 MT) **Rick Steves' Europe**
- 4:30 (3:30 MT) **Nature Adventures** ▼
Conservation Angels



Photo: Florentine Films

The Civil War, the award-winning film produced and directed by Ken Burns, will be rebroadcast over five consecutive nights. The broadcast, which coincides with the 25th anniversary of the series' initial broadcast in September 1990, will present for the first time a newly restored high-definition version. This is also the first time the film will be seen with the same fidelity and framing as the negative that Burns and his co-cinematographers Allen Moore and Buddy Squires shot more than 25 years ago.

SDPB1: Monday, Sept 7 – Friday, Sept 11, 8pm (7 MT)



Photo: Neil Genowen/Bufalo Pictures

Martin Clunes of *Doc Martin* fame (right) stars as Sir Arthur Conan Doyle, creator of Sherlock Holmes, in the three-part **MASTERPIECE Mystery! Arthur & George** – an adaptation of a Julian Barnes-novel based on an actual event. Outraged by injustice to an Anglo-Indian solicitor, Doyle uses the methods of his own fictional detective to get at the truth. Also starring Charles Edwards (left) of *Downton Abbey* as Alfred Wood.

SDPB1: Sundays, 8 pm (7 MT) Sept 6, 13, & 20

- 5:00 (4:00 MT) **Antiques Roadshow** *Myrtle Beach, Hour Three*
- 6:00 (5:00 MT) **Great British Baking Show**
Bread
- 7:00 (6:00 MT) **Arthur & George On Masterpiece Part 2 of 3**
- 8:00 (7:00 MT) **Masterpiece Mystery! Sherlock, Series III: The Sign of Three**
- 9:30 (8:30 MT) **Vicious**
- 10:00 (9:00 MT) **Richard Bangs' Adventures with Purpose**
- 11:00 (10:00 MT) **Globe Trekker**
- Midnight (11:00 MT) Washington Week with Gwen Ifill**

SDPB2

- 4:00 (3:00 MT) **100 Yards, 100 Years** ▼
- 5:00 (4:00 MT) **PBS NewsHour Weekend**
- 5:30 (4:30 MT) **Dakota Life** ▼
- 6:00 (5:00 MT) **Revolutionaries**
- 7:00 (6:00 MT) **Nature**
- 8:00 (7:00 MT) **Hava Nagila**
- 9:00 (8:00 MT) **African Americans: Many Rivers to Cross**
- 10:00 (9:00 MT) **Independent Lens** *Brakeless*
- 11:00 (10:00 MT) **Nature** *Wolverine: Chasing the Phantom*
- Midnight (11:00 MT) Hava Nagila**

MONDAY – SEPTEMBER 14

SDPB1

- 6:00 (5:00 MT) **PBS NewsHour**
- 6:58 (5:58 MT) **Business News Brief**
- 7:00 (6:00 MT) **Antiques Roadshow** *Survivors*
- 8:00 (7:00 MT) **American Experience** *Walt Disney, Part 1 of 2*
- 10:00 (9:00 MT) **Red Green Show**
- 10:24 (9:24 MT) **Stargazers**
- 10:30 (9:30 MT) **BBC World News**
- 11:00 (10:00 MT) **Charlie Rose**
- Midnight (11:00 MT) Tavis Smiley**

SDPB2

- 6:00 (5:00 MT) **How We Got to Now**

- 8:00 (7:00 MT) **Local USA**
- 8:30 (7:30 MT) **Film School Shorts**
- 9:00 (8:00 MT) **PBS NewsHour**
- 10:00 (9:00 MT) **Nightly Business Report**
- 10:30 (9:30 MT) **DW News**
- 11:00 (10:00 MT) **How We Got to Now**

TUESDAY – SEPTEMBER 15

SDPB1

- 6:00 (5:00 MT) **PBS NewsHour**
- 6:58 (5:58 MT) **Business News Brief**
- 7:00 (6:00 MT) **In Their Own Words** *Jim Henson*
- 8:00 (7:00 MT) **American Experience** *Walt Disney, Part 2 of 2*
- 10:00 (9:00 MT) **Keeping up Appearances**
- 10:30 (9:30 MT) **BBC World News**
- 11:00 (10:00 MT) **Charlie Rose**
- Midnight (11:00 MT) Tavis Smiley**

SDPB2

- 6:00 (5:00 MT) **25,000 Mile Love Story**
- 7:00 (6:00 MT) **American ReFramed** *Purgatorio*
- 8:30 (7:30 MT) **Compadre Huashayo**
- 9:00 (8:00 MT) **PBS NewsHour**
- 10:00 (9:00 MT) **Nightly Business Report**
- 10:30 (9:30 MT) **DW News**
- 11:00 (10:00 MT) **America ReFramed**
Purgatorio
- 12:30 (11:30 MT) **Compadre Huashayo**

WEDNESDAY – SEPTEMBER 16

SDPB1

- 6:00 (5:00 MT) **PBS NewsHour**
- 6:58 (5:58 MT) **Business News Brief**
- 7:00 (6:00 MT) **Nature** *The Sagebrush Sea*
- 8:00 (7:00 MT) **NOVA** *Dawn of Humanity*
- 10:00 (9:00 MT) **Vicious**
- 10:30 (9:30 MT) **BBC World News**
- Midnight (11:00 MT) Tavis Smiley**

SDPB2

- 6:00 (5:00 MT) **Independent Lens** *Reporter/ The Undocumented*

(September 16, continued)

9:00 (8:00 MT) **PBS NewsHour**
10:00 (9:00 MT) **Nightly Business Report**
10:30 (9:30 MT) **DW News**
11:00 (10:00 MT) **Independent Lens** *The Undocumented/The State of Arizona*

THURSDAY – SEPTEMBER 17

SDPB1
6:00 (5:00 MT) **PBS NewsHour**
6:58 (5:58 MT) **Business News Brief**
7:00 (6:00 MT) **On Call** ▼
8:00 (7:00 MT) **South Dakota Focus** ▼ *Future Farmers*
9:00 (8:00 MT) **Father Brown**
9:54 (8:54 MT) **Stargazers**
10:00 (9:00 MT) **As Time Goes By**
10:30 (9:30 MT) **BBC World News**
11:00 (10:00 MT) **Charlie Rose**
Midnight (11:00 MT) **Tavis Smiley**

SDPB2
6:00 (5:00 MT) **Secrets of the Dead**
7:00 (6:00 MT) **NOVA** *Dawn of Humanity*
9:00 (8:00 MT) **PBS NewsHour**
10:00 (9:00 MT) **Nightly Business Report**
10:30 (9:30 MT) **DW News**
11:00 (10:00 MT) **Secrets of the Dead**
Midnight (11:00 MT) **NOVA** *Dawn of Humanity*

FRIDAY – SEPTEMBER 18

SDPB1
6:00 (5:00 MT) **PBS NewsHour**
6:58 (5:58 MT) **Business News Brief**
7:00 (6:00 MT) **Washington Week with Gwen Ifill**
7:30 (6:30 MT) **Charlie Rose – The Week**
8:00 (7:00 MT) **McLaughlin Group**



Photo: Pedro E. Guerrero Archives

On **American Masters**: **Pedro E. Guerrero**, discover the life and work of Mexican-American photographer Guerrero, who collaborated with Frank Lloyd Wright and sculptors Alexander Calder and Louise Nevelson.

SDPB1: Friday, Sept 18, 9pm (8 MT)
SDPB2: Wednesday, Sept 23, 7pm (6 MT)

8:30 (7:30 MT) **Market to Market**
9:00 (8:00 MT) **American Masters**
10:00 (9:00 MT) **POV** *Cutie and the Boxer*
11:30 (10:30 MT) **Dakota Life** ▼
Midnight (11:00 MT) **Tavis Smiley**

SDPB2
6:00 (5:00 MT) **Great Museums**
7:00 (6:00 MT) **American Experience** *Walt Disney, Part 1 of 2*
9:00 (8:00 MT) **PBS NewsHour**
10:00 (9:00 MT) **Nightly Business Report**
10:30 (9:30 MT) **DW News**
11:00 (10:00 MT) **American Experience** *Walt Disney, Part 1 of 2*

SATURDAY – SEPTEMBER 19

SDPB1
6:00 (5:00 MT) **Lawrence Welk Show**
7:00 (6:00 MT) **Doc Martin**
8:00 (7:00 MT) **Keeping Up Appearances**
8:30 (7:30 MT) **As Time Goes By**
9:00 (8:00 MT) **Father Brown**
9:54 (8:54 MT) **Stargazers**
10:00 (9:00 MT) **No Cover, No Minimum** ▼ *Dwight Lamb with Jensen & Bugge*
11:00 (10:00 MT) **Austin City Limits** *Foo Fighters*
Midnight (11:00 MT) **Bluegrass Underground** *Earls of Leicester*

SDPB2
1:00 (Noon MT) **Great Museums**
3:00 (2:00 MT) **Hawking**
4:00 (3:00 MT) **To the Contrary with Bonnie Erbe**
4:30 (3:30 MT) **Washington Week with Gwen Ifill**
5:00 (4:00 MT) **PBS NewsHour Weekend**
5:30 (4:30 MT) **Charlie Rose – The Week**
6:00 (5:00 MT) **Focus on Europe**
6:30 (5:30 MT) **Global 3000**
7:00 (6:00 MT) **American Experience** *Walt Disney, Part 2 of 2*
9:00 (8:00 MT) **America ReFramed** *Purgatorio*
10:30 (9:30 MT) **Compadre Huashayo**
11:00 (10:00 MT) **American Experience** *Walt Disney, Part 2 of 2*

SUNDAY – SEPTEMBER 20

SDPB1
1:00 (Noon MT) **South Dakota Focus** ▼ *Future Farmers*
2:00 (1:00 MT) **Civil War: The Untold Story**
3:00 (2:00 MT) **Civil War Songs and Stories**
4:00 (3:00 MT) **Rick Steves' Europe**
4:30 (3:30 MT) **Nature Adventures** ▼ *All Creatures Great and Small*
5:00 (4:00 MT) **Antiques Roadshow** *Survivors*
6:00 (5:00 MT) **Great British Baking Show** *Desserts*
7:00 (6:00 MT) **Arthur & George on Masterpiece** *Part 3 of 3*
8:00 (7:00 MT) **Masterpiece Mystery!** *Sherlock, Series III: His Last Vow*
9:35 (8:35 MT) **Vicious**
10:00 (9:00 MT) **Richard Bangs' Adventures with Purpose**
11:00 (10:00 MT) **Globe Trekker**
Midnight (11:00 MT) **Washington Week with Gwen Ifill**

SDPB2
4:00 (3:00 MT) **Stavig Letters** ▼
5:00 (4:00 MT) **PBS NewsHour Weekend**
5:30 (4:30 MT) **Compadre Huashayo**

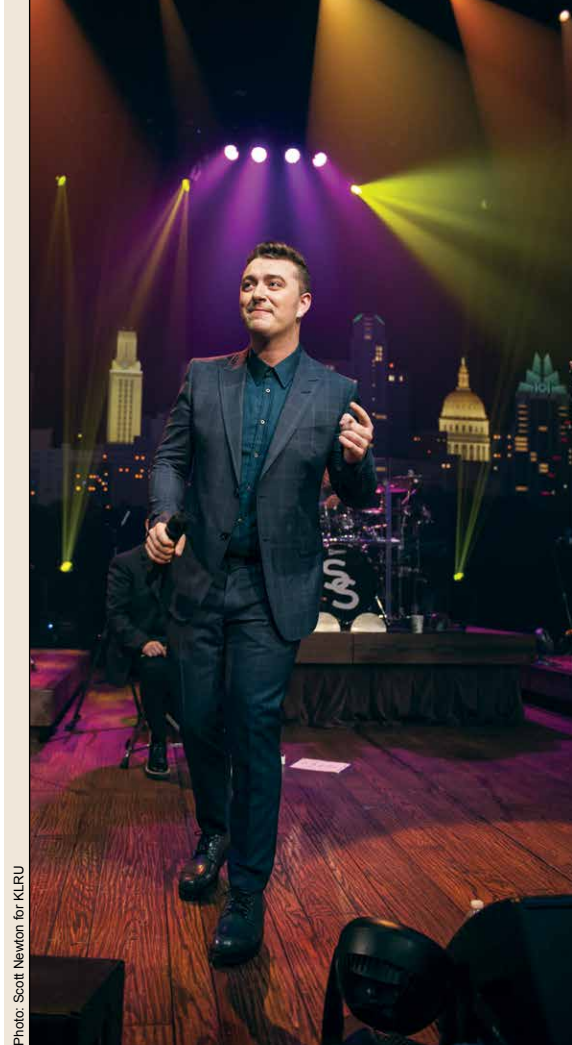


Photo: Scott Newton for KLRU

Austin City Limits features soulful pop from Sam Smith and Future Islands. UK sensation Smith sings "Stay With Me" and others from his debut. Future Islands features their single "Seasons (Waiting on You)" as well as other tunes from *Singles*.

SDPB1: Sunday, Sept 13, 11pm (10 MT)

6:00 (5:00 MT) **Revolutionists**
7:00 (6:00 MT) **Nature** *The Sagebrush Sea*
8:00 (7:00 MT) **In Their Own Words** *Jim Henson*
9:00 (8:00 MT) **POV** *Tea Time/Reporter*
11:00 (10:00 MT) **Nature** *The Sagebrush Sea*
Midnight (11:00 MT) **In Their Own Words** *Jim Henson*

MONDAY – SEPTEMBER 21

SDPB1
6:00 (5:00 MT) **PBS NewsHour**
6:58 (5:58 MT) **Business News Brief**
7:00 (6:00 MT) **Antiques Roadshow** *Rapid City, Hour One/Hour Two*
9:00 (8:00 MT) **POV** *Don't Tell Anyone*
10:30 (9:30 MT) **BBC World News**
11:00 (10:00 MT) **Charlie Rose**
Midnight (11:00 MT) **Tavis Smiley**

SDPB2
6:00 (5:00 MT) **How We Got to Now**
8:00 (7:00 MT) **Local USA**
8:30 (7:30 MT) **Film School Shorts**
9:00 (8:00 MT) **PBS NewsHour**
10:00 (9:00 MT) **Nightly Business Report**
10:30 (9:30 MT) **DW News**
11:00 (10:00 MT) **How We Got to Now**

(continued on page 14)



Anna Lena Wonnenberg models traditional Kosovar bridal decoration.



Anna Lena Wonnenberg with children in Kosovo.



World Archery Youth Championships were held in Yankton in June.

Dakota Life: Pursuing Dreams in South Dakota

Dakota Life, SDPB TV's newsfeatu- res magazine, returns in September for its 18th season, with a focus on South Dakota youth pursuing their dreams. The SDPB-produced series premieres Thursday, Sept. 3, at 8pm (7 MT), when Stephanie Rissler visits South Dakota Farmer's Union Camps, whose mission is to bring agriculture into the lives of today's youth. SDPB joins kids ages 6-to-13 at day camps in Aurora and Brookings counties, as well as older kids at the Aberdeen district camp, which took place in July. The camps include hands-on activities that show- case the importance of agriculture as well as the many jobs available in the ag industry.

Next, **Dakota Life** profiles Anna Lena Wonnenberg, of Wakonda, who recently returned from Kosovo where she was a Peace Corps volunteer. Wonnenberg is a past winner of the *Reading Rainbow* Young Writers and Illustrators Contest, in which she discussed wanting to travel the world. We visit with Wonnenberg to see how she made that dream come true.

In June, the World Archery Youth Championships were held in Yankton and hosted young archers from over

52 countries. Tune in for a front row seat to the crossbow competition as well as interviews with the kids and teens who traveled from around the world to South Dakota to compete for the first place title.

Catfish Bay, the private water- ski park on the edge of Sioux Falls, is well-known for its waterskiing performance "The Greatest Show on H2O," but its main mission is to build youth, strengthen families, and create leaders. **Dakota Life** explores the Catfish Bay weeklong summer camp that introduces young kids to water sports, teaches water safety, and helps to develop confidence around the water.

Finally, SDPB catches up with Train on Time, a Vermillion company that has restored two types of person- powered handcars from the 1950's. Known as the Hodges Handcar and the Ottaway Pump-It, the self- propelled vintage cars provide a glimpse into old-fashioned fun.

Dakota Life airs several times through the month to give viewers multiple opportunities to tune in. Past programs are available on demand at SDPB.org/DakotaLife.



Children participate in activities at South Dakota Farmer's Union Camps.



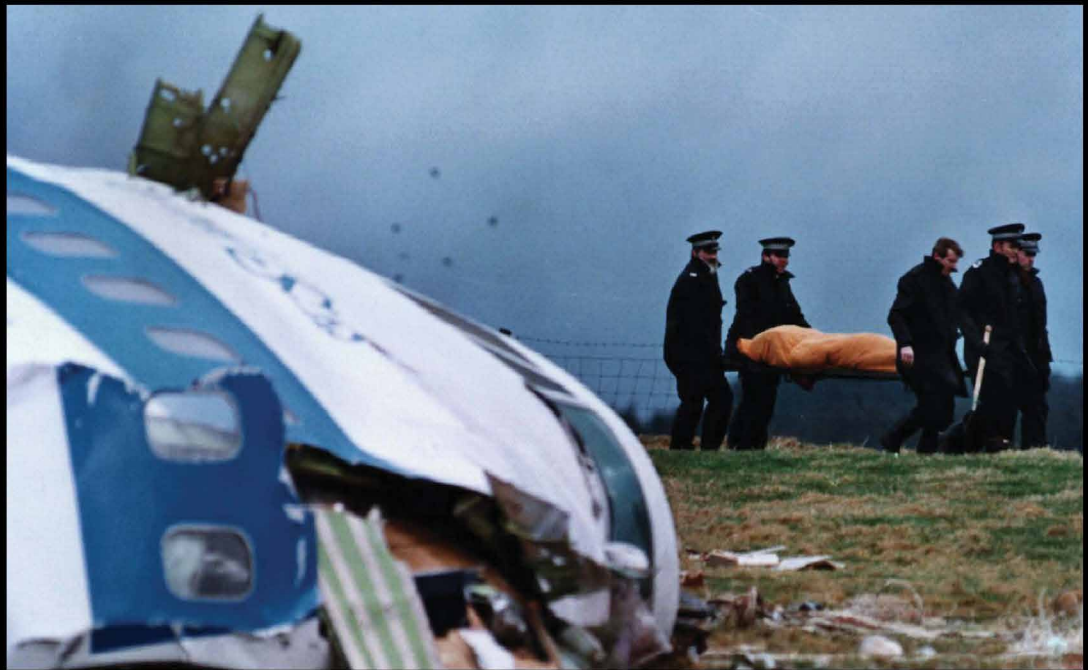
Jayce Pugh and Kaihlyn Anderberg of Miller sort seeds at Hand County Farmer's Union camp.



MY BROTHER'S BOMBER

A THREE-PART INVESTIGATIVE SERIES

Follow a brother's gripping search for the terrorists who blew up Pan Am Flight 103 over Lockerbie, Scotland. Filmmaker Ken Dornstein goes on a five-year trek through the Middle East in search of the men who killed 270 people, including his brother, in 1988.



SDPB1:
Tuesdays, 9pm (8 MT)
Sept 29, Oct 6, Oct 13



FRONTLINE

(continued from page 11)

TUESDAY – SEPTEMBER 22

SDPB1

- 6:00 (5:00 MT) **PBS NewsHour**
- 6:58 (5:58 MT) **Business News Brief**
- 7:00 (6:00 MT) **Gorongosa Park – Rebirth of Paradise**
- 9:00 (8:00 MT) **On Two Fronts: Latinos & Vietnam**
- 10:30 (9:30 MT) **BBC World News**
- 11:00 (10:00 MT) **Charlie Rose**
- Midnight (11:00 MT) **Tavis Smiley**

SDPB2

- 6:00 (5:00 MT) **Global Voices**
- 7:00 (6:00 MT) **America ReFramed *Gaucha Del Norte***
- 8:00 (7:00 MT) **Global Voices**
- 9:00 (8:00 MT) **PBS NewsHour**
- 10:00 (9:00 MT) **Nightly Business Report**
- 10:30 (9:30 MT) **DW News**
- 11:00 (10:00 MT) **America ReFramed *Gaucha Del Norte***
- Midnight (11:00 MT) **Global Voices**

WEDNESDAY – SEPTEMBER 23

SDPB1

- 6:00 (5:00 MT) **PBS NewsHour**
- 6:58 (5:58 MT) **Business News Brief**
- 7:00 (6:00 MT) **Nature *Nature's Miracle Orphans: Second Chances***
- 8:00 (7:00 MT) **NOVA *Arctic Ghost***
- 9:00 (8:00 MT) **Return to the Wild – The Chris McCandless Story**
- 10:00 (9:00 MT) **Vicious**
- 10:30 (9:30 MT) **BBC World News**
- 11:00 (10:00 MT) **Charlie Rose**
- Midnight (11:00 MT) **Tavis Smiley**

SDPB2

- 5:30 (4:30 MT) **POV *Don't Tell Anyone***
- 7:00 (6:00 MT) **American Masters *Pedro E. Guerrero: A Photographer's Journey***
- 8:00 (7:00 MT) **Salinas Project**
- 9:00 (8:00 MT) **PBS NewsHour**
- 10:00 (9:00 MT) **Nightly Business Report**
- 10:30 (9:30 MT) **DW News**
- 11:00 (10:00 MT) **Life on the Line**
- 11:30 (10:30 MT) **Visa Dream**
- Midnight (11:00 MT) **American Masters *Pedro E. Guerrero: A Photographer's Journey***



Discover some fantastic frontier finds with **Antiques Roadshow** in Rapid City. Treasures include Elvis Presley's army pass, a Samurai firearm, iconic furniture by Thomas Molesworth, and a 1944 Martin D-28 Herringbone Guitar valued between \$35,000- \$45,000.

SDPB1: Monday, Sept 21, 7pm, (6 MT) & Monday, Sept 28, 7pm (6 MT)

THURSDAY – SEPTEMBER 24

SDPB1

- 6:00 (5:00 MT) **PBS NewsHour**
- 6:58 (5:58 MT) **Business News Brief**
- 7:00 (6:00 MT) **On Call** ▼
- 8:00 (7:00 MT) **South Dakota Focus** ▼
Climate Change
- 9:00 (8:00 MT) **Father Brown**
- 9:54 (8:54 MT) **Stargazers**
- 10:00 (9:00 MT) **As Time Goes By**
- 10:30 (9:30 MT) **BBC World News**
- 11:00 (10:00 MT) **Charlie Rose**
- Midnight (11:00 MT) **Tavis Smiley**

SDPB2

- 6:00 (5:00 MT) **NOVA *Arctic Ghost Ship***
- 7:00 (6:00 MT) **Voces on PBS**
- 8:30 (7:30 MT) **Life on the Line**
- 9:00 (8:00 MT) **PBS NewsHour**
- 10:00 (9:00 MT) **Nightly Business Report**
- 10:30 (9:30 MT) **DW News**
- 11:00 (10:00 MT) **Secrets of the Dead**
- Midnight (11:00 MT) **Voces on PBS**

FRIDAY – SEPTEMBER 25

SDPB1

- 6:00 (5:00 MT) **PBS NewsHour**
- 6:58 (5:58 MT) **Business News Brief**
- 7:00 (6:00 MT) **Washington Week with Gwen Ifill**
- 7:30 (6:30 MT) **Charlie Rose – The Week**
- 8:00 (7:00 MT) **McLaughlin Group**
- 8:30 (7:30 MT) **Market to Market**
- 9:00 (8:00 MT) **Women's List: American Masters**
- 10:00 (9:00 MT) **POV *Art and Craft***
- 11:30 (10:30 MT) **Dakota Life** ▼
- Midnight (11:00 MT) **Tavis Smiley**

SDPB2

- 6:00 (5:00 MT) **Pioneers of Television**
- 7:00 (6:00 MT) **Voces on PBS**
- 9:00 (8:00 MT) **PBS NewsHour**
- 10:00 (9:00 MT) **Nightly Business Report**
- 10:30 (9:30 MT) **DW News**
- 11:00 (10:00 MT) **Pioneers of Television**
- Midnight (11:00 MT) **Voces on PBS**



Photo: Joyce Poole / Off the Fence B.V.

Years of extreme ivory poaching have left a large portion of Gorongosa's elephants tuskless. Experience the inspiring rebirth of an African wilderness through the eyes of Emmy Award-winning wildlife cameraman Bob Poole on **Gorongosa Park: Rebirth of Paradise**. Darting lions, wrestling crocs, facing down angry elephants – it's all part of a day's work as he joins the battle to re-wild a legendary national park.

SDPB1: Tuesdays, Sept 22 & 29, 7pm (6 MT)

SDPB2: Saturday, Sept 26, 7pm (6 MT)

SATURDAY – SEPTEMBER 26

SDPB1

- 6:00 (5:00 MT) **Lawrence Welk Show**
- 7:00 (6:00 MT) **Doc Martin**
- 8:00 (7:00 MT) **Keeping Up Appearances**
- 8:30 (7:30 MT) **As Time Goes By**
- 9:00 (8:00 MT) **Father Brown**
- 9:54 (8:54 MT) **Stargazers**
- 10:00 (9:00 MT) **No Cover, No Minimum** ▼
Tweed Funk
- 11:00 (10:00 MT) **Austin City Limits Vampire Weekend/Grizzly Bear**
- Midnight (11:00 MT) **Bluegrass Underground**
Amos Lee

SDPB2

- 1:00 (Noon MT) **Pioneers of Television**
- 2:00 (1:00 MT) **Voces on PBS**
- 4:00 (3:00 MT) **To the Contrary with Bonnie Erbe**
- 4:30 (3:30 MT) **Washington Week with Gwen Ifill**
- 5:00 (4:00 MT) **PBS NewsHour Weekend**
- 5:30 (4:30 MT) **Charlie Rose – The Week**
- 6:00 (5:00 MT) **Focus on Europe**
- 6:30 (5:30 MT) **Global 3000**
- 7:00 (6:00 MT) **Gorgongosa Park – Rebirth of Paradise**
- 9:00 (8:00 MT) **POV Don't Tell Anyone**
- 10:30 (9:30 MT) **Life on the Line: Coming of Age Between Nations**
- 11:00 (10:00 MT) **Gorgongosa Park – Rebirth of Paradise**

SUNDAY – SEPTEMBER 27

SDPB1

- 1:00 (Noon MT) **South Dakota Focus** ▼
Climate Change
- 2:00 (1:00 MT) **Live from Lincoln Center**
- 4:00 (3:00 MT) **Rick Steves' Europe**
- 4:30 (3:30 MT) **Nature Adventures** ▼ *Our Gulf Coast Wildlife Adventure*
- 5:00 (4:00 MT) **Antiques Roadshow Rapid City, Hour One**
- 6:00 (5:00 MT) **Great British Baking Show Pies & Tarts**
- 7:00 (6:00 MT) **Secrets of Westminster**
- 8:00 (7:00 MT) **Indian Summers on Masterpiece Part 1 of 10**
- 9:30 (8:30 MT) **Vicious**
- 10:00 (9:00 MT) **Richard Bangs' Adventures with Purpose**
- 11:00 (10:00 MT) **Globe Trekker**
- Midnight (11:00 MT) **Washington Week with Gwen Ifill**

SDPB2

- 4:00 (3:00 MT) **Dropping Back In**
- 5:00 (4:00 MT) **PBS NewsHour Weekend**
- 5:30 (4:30 MT) **Dropping Back In**
- 7:00 (6:00 MT) **Nature Nature's Miracle Orphans**
- 8:00 (7:00 MT) **On Two Fronts: Latinos & Vietnam**
- 9:30 (8:30 MT) **POV Art and Craft**
- 11:00 (10:00 MT) **Nature Nature's Miracle Orphans**
- Midnight (11:00 MT) **On Two Fronts: Latinos & Vietnam**

MONDAY – SEPTEMBER 28

SDPB1

- 6:00 (5:00 MT) **PBS NewsHour**
- 7:00 (6:00 MT) **Antiques Roadshow Rapid City, Hour Three**



Photo: Des Willie ©Love Productions

Watch the battle to be named the U.K.'s best amateur baker on the **Great British Baking Show**. Mel Giedroyc and Sue Perkins coax participants through their Signature, Technical and Showstopper challenges, under the scrutiny of judges Mary Berry and Paul Hollywood. With 13 bakers — from space engineer to student, teacher to dentist, psychologist to carpenter — Mary and Paul may decide at any time to banish not one but two bakers. After 10 weeks of whisking, crimping and piping, only one can emerge victorious.

SDPB1: Sundays, 6pm (5 MT) Sept. 6, 13, 20 & 27

- 8:00 (7:00 MT) **Antiques Roadshow Albuquerque, Hour One**
- 9:00 (8:00 MT) **I'll Have What Phil's Having Tokyo**
- 10:00 (9:00 MT) **Red Green Show**
- 10:24 (9:24 MT) **Stargazers**
- 10:30 (9:30 MT) **BBC World News**
- 11:00 (10:00 MT) **Charlie Rose**
- Midnight (11:00 MT) **Tavis Smiley**

SDPB2

- 6:00 (5:00 MT) **Independent Lens The Graduates**
- 8:00 (7:00 MT) **Local USA**
- 8:30 (7:30 MT) **On Story**
- 9:00 (8:00 MT) **PBS NewsHour**
- 10:00 (9:00 MT) **Nightly Business Report**
- 10:30 (9:30 MT) **DW News**
- 11:00 (10:00 MT) **Independent Lens The Graduates**

TUESDAY – SEPTEMBER 29

SDPB1

- 6:00 (5:00 MT) **PBS NewsHour**
- 6:58 (5:58 MT) **Business News Brief**
- 7:00 (6:00 MT) **Gorgongosa Park – Rebirth of Paradise**
- 9:00 (8:00 MT) **Frontline My Brother's Bomber, Part 1 of 3**
- 10:00 (9:00 MT) **Keeping Up Appearances**
- 10:30 (9:30 MT) **BBC World News**
- 11:00 (10:00 MT) **Charlie Rose**
- Midnight (11:00 MT) **Tavis Smiley**

SDPB2

- 5:30 (4:30 MT) **Go Public: A Day in the Life of an American School District**
- 7:00 (6:00 MT) **America ReFramed If You Build It**
- 8:30 (7:30 MT) **Dropping Back In**
- 9:00 (8:00 MT) **PBS NewsHour**
- 10:00 (9:00 MT) **Nightly Business Report**
- 10:30 (9:30 MT) **DW News**
- 11:00 (10:00 MT) **America ReFramed If You Build It**

WEDNESDAY – SEPTEMBER 30

SDPB1

- 6:00 (5:00 MT) **PBS NewsHour**
- 6:58 (5:58 MT) **Business News Brief**
- 7:00 (6:00 MT) **Nature Nature's Miracle Orphans: Wild Lessons**
- 8:00 (7:00 MT) **E.O. Wilson – Of Ants and Men**
- 10:00 (9:00 MT) **Vicious**
- 10:30 (9:30 MT) **BBC World News**
- 11:00 (10:00 MT) **Charlie Rose**
- Midnight (11:00 MT) **Tavis Smiley**

SDPB2

- 6:04 (5:04 MT) **180 Days: Hartsville**
- 8:01 (7:01 MT) **Schools That Change Communities**
- 9:00 (8:00 MT) **PBS NewsHour**
- 10:00 (9:00 MT) **Nightly Business Report**
- 10:30 (9:30 MT) **DW News**
- 11:00 (10:00 MT) **180 Days: Hartsville**

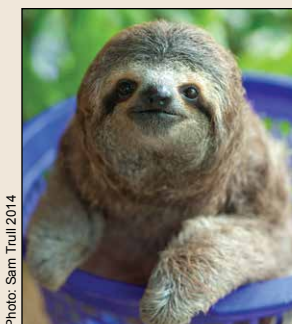


Photo: Sam Tuill 2014

A baby three-toed sloth is weighed in a plastic basket at an animal rescue center in Costa Rica. How do young animals survive when they've lost their mothers? The heartwarming and emotional series **NATURE: Nature's Miracle Orphans** follows the work of extraordinary people who have devoted their lives to helping all sorts of wild orphans get back on their feet. It follows the different stages of caring for these little heroes, from rescuing and tending to young babies in the early stages of life, to teaching them how to look after themselves, and finally looking to the future when, hopefully, they will one day be released back into the wild.

SDPB1: Wednesdays, Sept 23 & 30, 7pm (6 MT)

SDPB2: Sunday, Sept 27, 7pm (6 MT)

**SEE PAULA POUNDSTONE
LIVE!**

**FRIDAY, OCTOBER 16, 8:00PM
WASHINGTON PAVILION**



PAULA POUNDSTONE

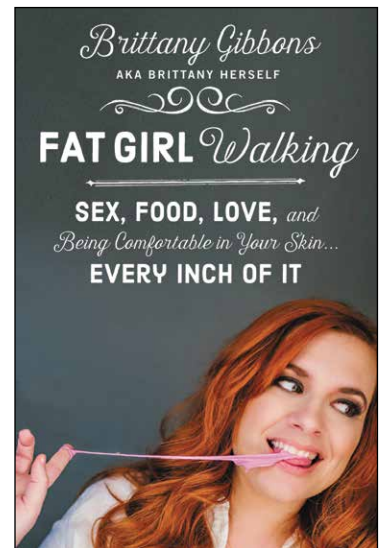
**TICKETS ON
SALE NOW!**

WashingtonPavilion.org or at the Box Office

Photo: Andy Gibbons



Brittany Gibbons, author of *Fat Girl Walking: Sex, Food, Love, and Being Comfortable in Your Skin...Every Inch of It*



Authors on the Air

Dakota MIDDAY will broadcast live from the South Dakota Book Festival in Deadwood, Friday, September 25th at Noon (11 MT). The annual festival takes place September 24-27. Host Karl Gehrke will interview authors from Deadwood Mountain Grand. Authors include:

Ron Capps, founder and director of the Veterans Writing Project, a non-profit that provides no-cost writing seminars for veterans and their adult family members. Capps served 25 years in the U.S. Army and Army Reserve and is a retired Foreign Service officer for the Department of State. *Publisher's Weekly* said his book, *Seriously Not All Right: Five Wars in Ten Years*, "recounts the horrors Capps encountered and their devastating effects on his psyche and soul. Capps's telling of his story of war and bearing witness is vitally important for "the 99% of Americans who sat out the wars in Afghanistan and Iraq."

Richard Etulain, author of *The Life and Legends of Calamity Jane* (2014) and *Calamity Jane: A Reader's Guide* (2015), both from the University of Oklahoma Press. Etulain is professor

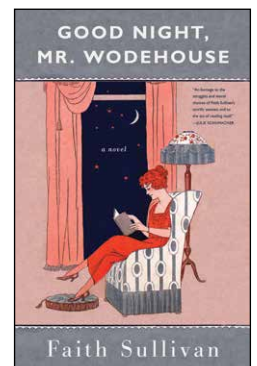
emeritus of history and former director of the Center for the American West at the University of New Mexico.

Brittany Gibbons, author of the *New York Times* Best Seller *Fat Girl Walking: Sex, Food, Love, and Being Comfortable in Your Skin...Every Inch of It* (HarperCollins). Gibbons is a popular blogger and recognized positive body image advocate.

James McLaird, author of *Calamity Jane: The Woman and the Legend* (University of Oklahoma Press). McLaird is a specialist in South

Dakota and American West history who taught at Dakota Wesleyan University for 37 years.

Faith Sullivan, author of *Good Night, Mr. Wodehouse: A Novel* (Milkweed Editions). A native Minnesotan, Sullivan has written seven award-winning novels, including the national bestseller *The Cape Ann*. *Good Night, Mr. Wodehouse* spans the first half of the twentieth century and tells the story of a likeable, resilient protagonist who finds comfort and guidance in great novels.

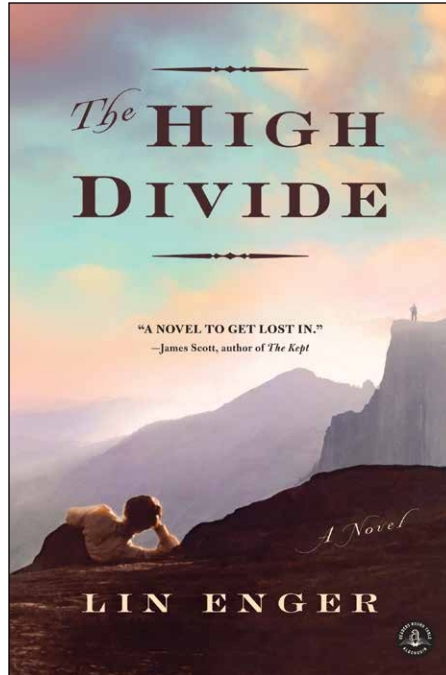


Faith Sullivan, author of *Good Night Mr. Wodehouse: A Novel*

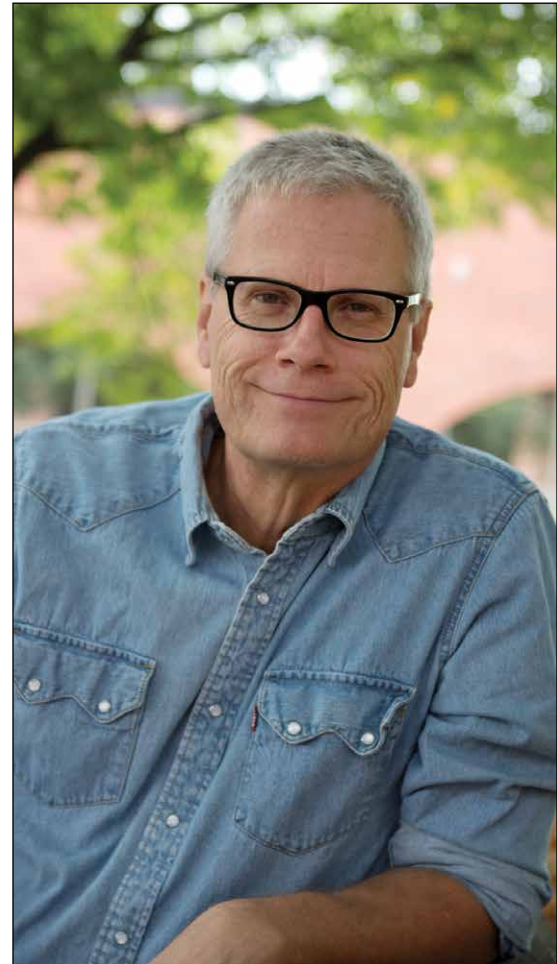
Dakota Midday Book Club

Upcoming selections for the Dakota Midday Book Club include *The Red Bird All-Indian Traveling Band* (University of Arizona Press) by Frances Washburn. Washburn, who grew up on and around the Pine Ridge Indian Reservation, is associate professor of American Indian studies and English at the University of Arizona. Characterized as “part mystery, part community chronicle,” the story follows wry, 20-something Sissy Roberts as she unravels the mystery of a death on the rez and confronts issues of her own future.

The next Book Club selection is Lin Enger’s novel *The High Divide* (Algonquin Press). Set in the Great Plains in the 19th century, *The High Divide* tells the story of Gretta Pope and her young sons who go in search of the husband and father who abandoned them on the far edge of Minnesota’s western prairie. *Library Journal* said: “Enger’s novel is told in beautifully exact, liquid language that wastes no time, just as one cannot afford to waste time when making a journey such as the Pope family’s. Highly recommended.”



Tune into **Dakota Midday** on SDPB Radio for interviews with Dakota Midday Book Club authors Frances Washburn and Lin Enger. More information about the Dakota Midday Book Club is available online at SDPB.org/bookclub.



Lin Enger, author of *The High Divide*.



Karl Gehrke, host for **Dakota Midday**.

RADIO	WEEKDAYS	SATURDAYS	SUNDAYS	
5am / 4 MT	Morning Edition NPR news. Star Date 9am (8 MT)	BBC World Service Overnight.	BBC World Service Overnight.	
5:30/4:30 MT		The People's Pharmacy Health news & alternatives.	TED Radio Hour Ideas, inventions and original thinking.	
6am / 5 MT		Weekend Edition News and features from NPR.	Weekend Edition News and features from NPR.	
6:30/5:30 MT				
7am / 6 MT		Morning Classics with Owen DeJong ▼ "South Dakota Season Ticket" w/ local performance on Wed. "Request Day" on Fridays.	The Best of Car Talk Real advice, zany hosts.	Krista Tippett on Being Philosophical discussions.
7:30/6:30 MT			Wait, Wait ... Don't Tell Me Trivia, humor from week's news.	Travel with Rick Steves America's top travel expert.
8am / 7 MT			*Radiolab Science and life.	America's Test Kitchen Recipes, tips, and information.
8:30/7:30 MT			*This American Life Portraits of all kinds of Americans.	A Prairie Home Companion Garrison Keillor with music, humor, skits and more.
9am / 8 MT	Here & Now , Mondays-Thursdays News, features, conversations and more from NPR.		TED Radio Hour Ideas, inventions and original thinking.	
9:30/8:30 MT	Science Friday on Fridays.	*Wits America's best contemporary music and comedy.	*SymphonyCast Top orchestras.	
10am / 9 MT		The Dinner Party Download Pop culture, food & conversation.		
10:30/9:30 MT	PRI's The World Global news.	All Things Considered NPR	All Things Considered NPR	
11am / 10 MT		A Prairie Home Companion Garrison Keillor with music, humor, skits and more.	*On the Media News analysis and journalistic journeys.	
11:30/10:30MT	Marketplace	American Routes Roots music, stories behind sounds/ artists.	*This American Life Portraits of all kinds of Americans.	
Noon / 11 MT		Rock Garden Tour ▼ Last Sat. of month, 8pm (7 MT)	*Ask Me Another Test your wits in this lively quiz show.	
12:30/11:30MT	Various jazz, big band and blues music.	*On Record with Matt Weesner ▼ Adult alternative music.	*Big Band Spotlight with Karl Gehrke ▼ Music of '30s & '40s.	
1pm / Noon MT		*No Cover, No Minimum Radio ▼ South Dakota performance.	*Jazz Night in America	
1:30/12:30 MT	World Café Music from around the globe.	Blue Dimensions Blues music & artists explored.	*Selected Shorts Readings of fiction by top actors.	
2pm / 1 MT		BBC World Service Overnight.	*The Moth Radio Hour Compelling real-life stories.	
2:30/1:30 MT	BBC World Service Overnight.	BBC World Service Overnight.	Fresh Air Weekend Best features from the week.	
3pm / 2 MT		BBC World Service Overnight.	BBC World Service Overnight.	

*American Public Media has cancelled the radio variety show *Wits* and SDPB Radio is now offering more chances to tune-in to your favorite weekend shows. The following changes to weekend programming are effective Sept 19-20:

Saturday (Central Time):

11am- Noon – This American Life
 Noon-1pm – Radiolab
 2-3pm – Ask Me Another
 9-10pm – No Cover No Minimum Radio
 10pm-Mid. – On Record

Sunday (Central Time):

2-3pm –Wait, Wait... Don't Tell Me
 3-4pm – On the Media
 5-6pm –Fresh Air Weekend
 6-7pm –Radiolab
 7-8pm –This American Life

8-9pm – The Moth Radio Hour

9-10pm – Big Band Spotlight
 10-11pm – The New Jazz Archive
 11pm- Mid. – No Cover No Minimum Radio



Changes on the Air

The lineup of hosts on NPR's **All Things Considered** is expanding. Kelly McEvers and Ari Shapiro join Audie Cornish and Robert Siegel weekdays, and Michel Martin is moving to a new role as host of weekend *ATC*. Kelly McEvers most recently was National Desk correspondent on the West Coast. McEvers also reported for several years from the Middle East and ran NPR's Beirut bureau. Ari Shapiro served as NPR's London correspondent and has also reported from the White House and the Justice Department. Melissa Block, who hosted *ATC* for 12 years, will now produce profiles, long-form stories, and series as an NPR Special Correspondent.

All Things Considered is heard on more than 700 radio stations and is the most listened-to afternoon drive-time radio news program in the country. The program airs weekdays on SDPB Radio at 4pm (3 MT).

Picture South Dakota

SDPB Photo Contest

SDPB invites you to photograph where you work, live, and play in South Dakota. From Saturday, Oct. 1 through Friday, Oct. 7, photograph what being South Dakotan means to you, and share the images with us. Deadline for submissions is Friday, Oct. 7.

Enter any of the four categories:

- 1) **South Dakota:** What “being South Dakotan” means to you.
- 2) **Home:** Photos related to where and how we live.
- 3) **Work:** Photos related to where and how we work.
- 4) **Connections:** Photos related to all that connects us to each other like community, technology, family, energy, faith, cultures, politics and lifestyle.

Prizes in each of the four categories include:

First Place - \$250; Second Place - \$150; Third place - \$100

In addition, \$250 will be awarded to the photography chosen as “People’s Choice” based on online voting.

Entries can be submitted at SDPB.org/photocontest

Judges include John Banasiak, USD Professor of Art; Bonny Fleming, multimedia artist; Katie Hunhoff, editor of *South Dakota Magazine*, and Paul Schiller, founding co-partner of Lawrence & Schiller and “Acts of Nature.”

Winners will be published in the *2016 Picture South Dakota Calendar*, produced by SDPB.

For more information contact Kent.Osborne@SDPB.org or 605-677-6454.



2015 South Dakota category winner, “Starry Night” by Christian Begeman.



2015 photo contest calendar cover.

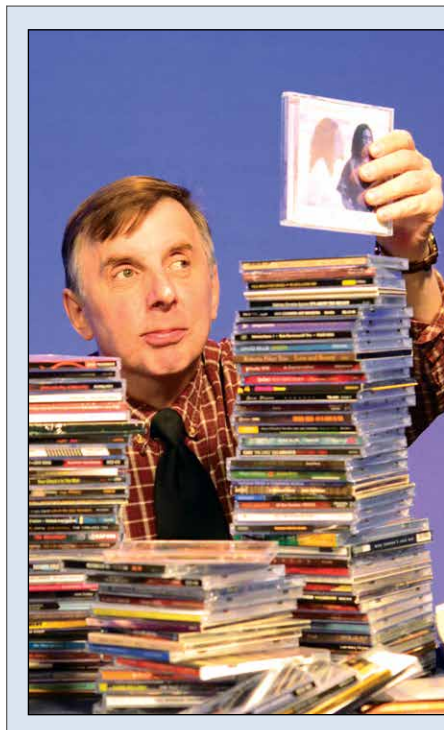


Luke Groskin, *Science Friday* Producer/Director of “4850 Below,” at the Sanford Underground Research Facility.

Deep, Dark Matters on *Science Friday*

Science Friday’s Luke Groskin and crew recently visited the Sanford Underground Research Facility near Lead for an upcoming episode on the LUX (Large Underground Xenon) experiment. Titled “4850 Below,” the segment showcases the research on the delicate, mysterious substance known as “dark matter” being conducted 4850 feet underground in the former Homestake Mine. Deep labs at the 8,000-foot deep mine protect sensitive physics experiments from cosmic radiation.

Science Friday, a weekly science, technology, and environment news program, airs Fridays at 2:30pm (1:30 MT) on SDPB Radio.



Farewell and Thank You, Jim Clark

SDPB says goodbye to **Jazz Nightly** radio host Jim “Uncle Jimmo” Clark, who recently resigned. Clark hosted SDPB’s jazz program since March, 2001 with his trademark encyclopedic passion for Jazz and its musicians. We wish Jim the best in his future endeavors.

Jazz Nightly premiered on SDPB Radio in June, 1982. SDPB recognizes the dedication of **Jazz Nightly** listeners and will continue to feature jazz artists and styles in the weekday evening program schedule. We thank you for your faithful support as we remain committed to providing quality nightly music programming.

Thank You for Your Memorial Gifts to Friends of SDPB

Friends of SDPB has received the following memorial gifts. Thank you.

Darrel and Karen Westerman of Chancellor provided a donation in memory of Doris Westerman.

Ronald Johnson of Centerville made a gift in memory of his mother, Virginia.

The Friends of SDPB is grateful for these gifts. Donors may make memorial gifts to honor a special person or occasion. Gifts may be made by calling 800-333-0789 or may be mailed to Friends of SDPB, PO Box 5000, Brookings, SD, 57006.

Wide Sagebrush Sea

Saving the Sage-Grouse in South Dakota

On Wednesday, Sept 16, 7pm (6 MT), SDPB1 airs **Nature: The Sagebrush Sea**, named for the open expanse of sagebrush and grassland that once extended 500,000 square miles across North America, including northwestern South Dakota. The Greater Sage-Grouse makes its home year-round in this sparse landscape, relying on sagebrush as its only food in winter and enduring scorching temperatures in the summer. Mostly grey-brown and often inconspicuous in the native prairie side, sage-grouse males perform ostentatious mating rituals when mating or “at lek.” In spring, males strut, dance, fight, and puff out starburst tail-feathers and yellow chest-sacs to entice nearby females.

Today, the sagebrush sea has decreased to approximately 250,000 square miles. Fire and demands for water, oil, and housing in the region are fragmenting the sage-grouse home and migratory corridors so that they have lost half of their historic range. Increasing concern about declining sage-grouse populations has prompted action at the state and



A male sage-grouse puts on a display to attract females.

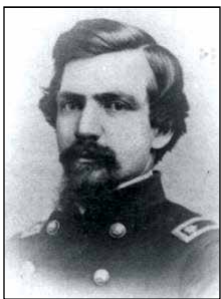
federal level, including the Sage-Grouse Management Plan from the South Dakota Department of Game, Fish and Parks (SD GFP). The SD GFP has prohibited the hunting of sage-grouse based on the low numbers of males observed during spring’s lek season. Currently, sage-grouse are a candidate for the endangered species list, with a final decision to be determined in 2015.

Human inhabitants of the grasslands region, like Joe Painter, a rancher near Buffalo, are teaming up with government and wildlife officials to undertake conservation efforts to help preserve and restore the bird’s only habitat. Throughout the past several years, Painter has voluntarily enrolled some 20,000 acres in the

Sage Grouse Initiative’s (SGI) preservation program, via the Natural Resources Conservation Service. “It’s going well,” says Painter. “It’s a good mix between rancher and wildlife. We like to do a good job of trying to protect the birds.”

Painter says he personally sees the conservation efforts paying off on his rangeland. “From my own visual opinion, it sure seems to be helping – not only sage grouse but all the other birds,” says Painter. “If you’re out in those pastures haying, and know where they live and nest, you’ll see sage-grouse. We sure like having all the birds around. I think anything we do to help protect them as long as it’s not over the top is important.”

Revisiting Ken Burns’s *The Civil War*



General Beadle

SDPB TV will broadcast a restored, high-definition version of Ken Burns’s groundbreaking documentary *The Civil War*, which originally aired 25 years

ago. As inveterate fans and new viewers sit down to watch Burns’s influential film, SDPB asked Civil War historian at the University of South Dakota, Kurt Hackemer, for a brief discussion of the seminal work.

SDPB: Can you discuss the relevance of Burns’s documentary as an icon of Civil War-era storytelling?

Kurt Hackemer: There are explanations and conclusions in the Burns

documentary that Civil War historians took issue with when it was originally aired in 1990, and Civil War scholarship has advanced significantly in the intervening 25 years. Despite its potential flaws, Burns’s work remains important because it is a very accessible introduction to the Civil War, this country’s most destructive and influential conflict. The stories and photographs Burns assembled bring the war to life in a way that is both easy to follow and memorable.

SDPB: What is the impact of Civil War veterans on native lands and Dakota Territory? How and where do we see that today?

KH: Civil War veterans played an important role in defining the social, cultural and political character of both Dakota Territory and the state of

South Dakota. Veterans like William Henry Harrison Beadle had a lasting impact on public education, while others served the territory and state as governors, legislators, and judges. What may be more important though, are the thousands of Civil War veterans who flooded into Dakota Territory in the decades following the war. They settled in every county, sometimes very conspicuously in places like Gettysburg, South Dakota, and were a prominent fixture of public life with their participation in more than a hundred local chapters of the Grand Army of the Republic, a veteran’s organization.

Ken Burns’s **The Civil War** runs five consecutive nights, Monday, Sept 7 through Friday, Sept 11, on SDPB1.

Corporate Support *Our corporate partners continue to support the excellent Television and Radio programming you have come to expect and love from SDPB.*

Aberdeen Parks, Recreation & Forestry Department	Dacotah Bank	Howes Oil	Quilters Headquarters	South Dakota State Quilt Guild
Abourezk Law Firm	Dacotah Prairie Museum—Granary Rural Cultural Center	Hy-Vee Food Stores	Rapid City Arts Council	South Dakota State University
Acupuncture 4 Health	Dakota Plains New Holland	IFAM Capital	Rapid City Sculpture Project	South Dakota State University – Woodbine Productions
All Souls Church	Daktronics	Independent Insurance Agents of SD	Regional Health	South Dakota Symphony
ArtForms Gallery	Davenport Evans Lawyers	Ingalls Homestead	Regional Heart Doctors	South Dakotans for the Arts
Arts Rapid City	Deadwood History (Adams Museum & House/Days of '76/Adams Research & Cultural Center)	Institute of Lutheran Theology	Reptile Gardens	Southeastern Dental Center – Dr. Daniel Goede
Associated General Contractors of South Dakota	Delta Dental of South Dakota	Interim HealthCare	Sanford Health	Spearfish GMC Cadillac Subway
Augustana College	DeMersseman Jensen Tellinghuisen & Huffman, LLP	James Szana Trio	SDN Communications	Sunset Pawn, Inc.
BankWest	East River Electric Power Cooperative	Jerry Sanftner Insurance	Sioux Falls Area Community Foundation	Tabor Czech Days
Bartlett & West	Exceptional Artists	Jolly Lane Greenhouse	Sioux Falls Seminary	Touchstone Energy
Bay Leaf Café, Inc.	Family Dentistry of Sioux Falls	Jorgensen Log Homes, Inc. (The) Journey Museum	Siouxland Museums	Turbak Law Office, PC
Bethesda	Farmers Union Insurance Companies First Bank and Trust	Koch Hazard Architects	South Dakota Affiliate of the American College of Nurse Midwives	University of Sioux Falls
Black Hills Area Community Foundation	First Dakota National Bank	Landscape Garden Centers	South Dakota Agricultural Heritage Museum	University of South Dakota
Black Hills Blues Society	Fischer, Rounds & Associates	LifeScape	South Dakota Bar Foundation	Vance Thompson Vision
Black Hills Federal Credit Union	Flooring America	LIW Pageant Society	South Dakota Community Foundation	Viken & Riggins Law Firm
Black Hills Film Festival	Founding Fathers	Madison Farmers Elevator	South Dakota Crop Improvement Association	Warne Chemical & Equipment Company
Black Hills Knowledge Network	Four Seasons Fabric	Mahlander's	South Dakota Film Festival	Washington Pavilion
Black Hills Playhouse	Gene Hufford Agency	McCrary Gardens	South Dakota Humanities Council	Weigum's Great Plains Landscape Arboretum
Black Hills Regional Eye Institute	Great Plains Zoo & Delbridge Museum	Media One Advertising	South Dakota Space Grant Consortium	West River Dermatology Clinic – Dr. Roger Knutsen
Black Hills State University	Chet Groseclose, Prof. LLC	Missouri River Energy Services	South Dakota Speech-Language-Hearing Association	Westhills Village Retirement Community
Black Hills Symphony	Hill City Arts Council	Mount Marty College	South Dakota State Fair	Wilson, Olson & Nash, PC - Attorneys at Law
Bush Foundation	Hill City Mercantile	North Country Fiber Fair	South Dakota State Historical Society	World Bicycle Relief
Capital Services	Home Federal Bank	Northern State University		Xcel Energy
Carter County Museum	Horton Incorporated	NorthWestern Energy		
(The) Center for Western Studies		Ophthalmology Associates		
Children's Museum of South Dakota		Ophthalmology LTD		
CO-OP Architecture		Prairie Repertory Theatre		
Credit Union Association of the Dakotas		Presentation Sisters of Aberdeen		
		Puetz Corporation		

Join us in telling South Dakota's stories. Be an underwriter.

Contact the Corporate Development Manager nearest you.

<p>Ned Gavlick, East River 800-333-0789</p>	<p>Terrie Koehne, West River 800-456-1266</p>
--------------------------------------------------------	----------------------------------------------------------

Volume 46 No. 9

Friends of SDPB Office
PO Box 5000
Brookings, SD 57006
(605) 688-4191 or (800) 333-0789

Ryan Howlett, Friends CEO
(800) 456-0556

SDPB Administrative Office
PO Box 5000
Vermillion, SD 57069
(605) 677-5861 or (800) 456-0766

SDPB Home Page
<http://www.SDPB.org>
press@SDPB.org

SDPB Magazine & Promotion Staff
Katy Beem, Editor
Matti Smith, Marketing Manager
Amber Anders, Continuity Director
Dave Foote, Promotion Producer
Michael Zimny, Social Media
Makenna Thompson, Marketing Intern

Friends of SDPB Board
President Daniel Leikvold, Lead
Vice President Janelle Krause Toman, Pierre
Tom Manzer, Treasurer, Brookings
Greg Blomberg, Secretary, Sioux Falls
Wayne Carney, Fort Pierre
Malcom "Chap" Chapman, Rapid City
Scott German, Peever
Thomas E. Graslie, Rapid City
Marcia Hendrickson, Chancellor
Laura Hofer, Sioux Falls
Rebecca Jirava, Brookings
Julie M. Johnson, Aberdeen
Lizabeth Manning, Spearfish
Katrina Lehr-McKinney, Sioux Falls
Waneen Polly, Watertown
Prof. Tim Schorn, Vermillion
John Charles Sternquist, Yankton
Cheryl Eagan Taylor, Sioux Falls

South Dakota Educational Telecommunications Board
Mark Shlanta, Chair, Sioux Falls
Doyle Estes, Hill City
Kay Jorgensen, Spearfish
Rick Knobe, Sioux Falls
Julie Mathiesen, Sturgis
Gerry Schlenker, Canistota

Michael G. Rush, Regents, Pierre
Julie Overgaard, SDPB, Vermillion
David Zolnowsky, BIT, Pierre

SDPB Management Team
Julie Overgaard, Executive Director
Larry Rohrer, Director of Content
SeVern Ashes, Engineering Director
Bob Bosse, Television Director
Fritz Miller, Marketing Director
Kent Osborne, Online Director
Joe Tlustos, Radio Director

– South Dakota Public Broadcasting is a division of the South Dakota Bureau of Information and Telecommunications.
– Friends of SDPB is a 501(c)3 organization.
– SDPB Magazine is printed by Midstates Printing, Aberdeen, SD. Approximately 14,500 copies of the document were printed at an approximate cost of \$.36 per copy. SDPB Magazine (ISSN 1529-1596) is published and mailed monthly for \$10 per year for Friends of SDPB, 815 Medary, Brookings, SD 57006. Periodical postage paid at Brookings, SD, and additional mailing offices.

Postmaster: Send address changes to Friends of SDPB, Box 5000, Brookings, SD 57006. USPS 0764-400



SOUTH DAKOTA'S CERTIFIED NURSE-MIDWIVES
PROUDLY SUPPORT

"CALL THE MIDWIFE"
AIRING ON SDPB TV.

CALL THE MIDWIFE HOLIDAY SPECIAL COMING
IN DECEMBER AND WATCH FOR
SEASON 5 NEXT SPRING.

SOUTH DAKOTA
AFFILIATE



South Dakota's Certified Nurse-Midwives

Nurse-Midwives have been providing pregnancy and women's health care services throughout the lifespan to South Dakota women and their families since 1978.

Find a midwife by visiting
www.ourmomentoftruth.com

Contact information for individual regions listed below:

Hot Springs

Black Hills Family
Health Clinic
605-745-5118

Pine Ridge

Pine Ridge Hospital
Nurse-Midwives
605-867-3128

Brookings

Avera Medical Group
Certified Nurse-Midwifery,
Coming Fall 2015
605-697-9500

Sioux Falls

Sanford Women's Health
605-328-7700

Avera Group Certified
Nurse-Midwifery
605-322-8946

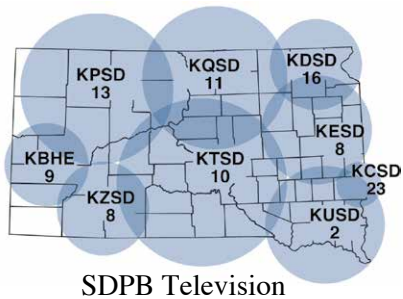
Rapid City

Rushmore OB/GYN
605-342-7295

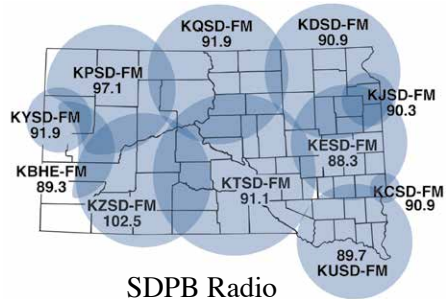
Native Women's Health
605-342-7400

Mobridge

Mobridge Medical Clinic
605-845-8225



SDPB Television



SDPB Radio

Live and on-demand audio and video at SDPB.org



The number on the top of your address is your membership expiration date. The number on the left is your identification. Please use for membership renewals. This will reduce our processing time and speed up your service.

Printed on Recycled Paper

INDIAN SUMMERS
 MASTERPIECE
 PREMIERES **SUN SEPT 27 8/7MT**

SDPB South Dakota Public Broadcasting | Be more. PBS