



SDPB

Magazine

April 2018



THE MOTH

True Stories Told Live

Sioux Falls • April 12

See p. 21 for details.



INSIDE: Decoding South Dakota's Weather Machine

MCCRORY  GARDENS

tulPALCOZA

2018

Experience *spring* at South Dakota's
premiere

Botanical Garden.

Showcasing 8,500 tulips choreographed to bloom en masse
and 15,000 additional spring bulbs ready to unfurl throughout the
25 acres of our garden sanctuary.

Support
tulPALCOZA
2018

\$150 sponsorship
funds 300 tulips
within a 60 square foot plot.

April hours are extended:
Monday - Saturday 9am - 5pm
*Sunday 12pm - 5pm

May - September
Monday - Saturday 9am - 8pm
Sunday 12pm - 6pm

*Visit our website or call for current hours and events.



McCraryGardens.com

631 22nd Ave | Brookings, SD 57007 | 605-688-6707



Morning Edition's Gary Ellenbolt.

WE (DON'T) INTERRUPT THIS PROGRAM



Lori Walsh.



ATC host Jeremy Ludemann.

CARA HETLAND DISCUSSES CHANGE, CALM CONVERSATIONS, AND SDPB'S FIRST INTERRUPTION-FREE RADIO DRIVE.



Cara Hetland.



Stephanie Rissler and Cara Hetland.

It's been two years since Cara Hetland was named SDPB's Director of Radio, during which listeners have heard an appreciable increase in news programming.

Now expect another programming shift. For the first half of April, SDPB will launch a radio drive that will sound nothing like a radio drive. Known as a "silent" or "warp" drive in public radio parlance, SDPB is asking new and returning members for support in half-minute bursts that won't disrupt **Morning Edition** or break Terry Gross's momentum. It's a fundraising strategy that's been adopted by other NPR member stations around the country. It places great faith in SDPB members – not only to vote their appreciation with their financial support, but also to encourage friends, family, and neighbors to make the move from listener to supporter.

Katy Beem: Tell us why SDPB is trying a new approach to radio fundraising.

Cara Hetland: "I joke that I don't like to do things the same old way they've always been done because I can't remember what we did. *(laughs)* Actually, I'm the person asking why we do things the way we do. Looking at the numbers it takes to pay for SDPB programming, it hit us that about half of those dollars come from our sustaining members, meaning we could raise the rest without

interrupting programming. Other public radio stations have done this with great success.

We're respecting our listeners. We're saying, you know listeners pay for the programs, now's the time to do it. When we hit our goal of \$180,000, we'll have what we need, and we'll stop asking. Of course, if it doesn't work in two weeks of just having 30 second messages, then we're going to have to interrupt programming. But I believe our listeners will appreciate this change and will embrace it and support the great programming.

KB: What have been some of your greatest surprises since you moved from News Director to Director of Radio?

CH: "My greatest surprises have been how this awesome team of radio professionals embraces change and really rallies behind each other. We have experienced quite a lot of change in my two years – from staff changes to program changes, to building new studios. Owen DeJong retired, Lori Walsh was asked to take an hour talk show to two hours. **[In the Moment producers]** Chris Laughery and Steve Zwemke left the comfort of the jobs they knew and joined the two-hour talk show. We brought Jeremy Ludemann on as host of **All Things Considered** and added an extra hour of the show. Lee Strubinger, Chynna Lockett and Jackie Hendry all joined as outstanding

young reporters. Pretty much Gary Ellenbolt, Susan Hanson and Karl Gehrke remained in their same positions."

KB: Tell us about the changes you've helped engineer.

CH: "We added more news programming and focused classical music on our second channel web stream [SDPB Classical 24.] The construction of the Black Hills Bureau has offered more programming opportunities and I look forward to repeating that in Sioux Falls. All in all, the staff has risen to the challenge and are always willing to try new things. We're a small staff, but we're filled with passion and determination for the programming we deliver every day."

KB: Larger news organizations and journalism schools are stressing how local news and local voices are more important than ever. The Des Moines Register won a Pulitzer last year for its editorial writing. How do you see SDPB News's role in today's political and digital media climate?

CH: "We are the calm and thoughtful conversations that bring a level of knowledge, acceptance and tolerance in a turbulent world. That's what we do – we bring voices and perspectives to our listeners they don't get anywhere else. We give people

(continued on page 21)

Farm kids waterski flooded ditches after warm February temps in South Dakota, 2017.



NASA simulation of the polar jet stream.

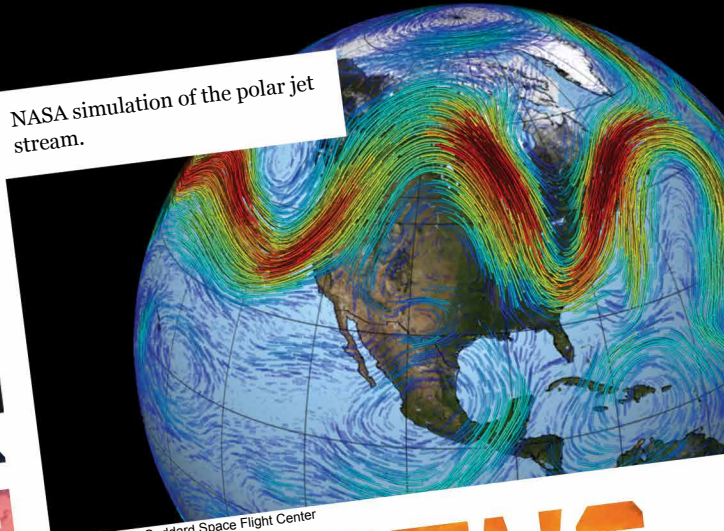
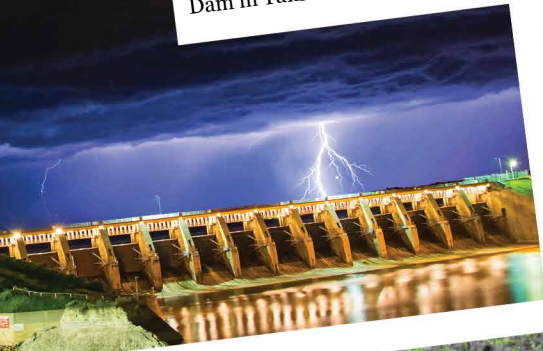


Photo: NASA's Goddard Space Flight Center

Lightning over Gavin's Point Dam in Yankton.



South Dakota producers continue to report drought impacts from dry soils.



DECODING SOUTH DAKOTA'S WEATHER MACHINE

by Katy Beem

This month, SDPB premieres **NOVA's Decoding the Weather Machine**, a candid examination of global climate change. Promising to cut through the confusion, and reluctant attitudes, around climate change, the documentary demystifies complex events in terms South Dakotans can readily apprehend and love to discuss: the weather.

As with many of her scientific colleagues, climate change is not really a matter of debate with South Dakota's State Climatologist Laura Edwards. Raised in the Twin Cities, Edwards holds a master's in meteorology from the University of Maryland and spent 8 years as a research climatologist at Reno's Desert Research Institute. She moved back to the Great Plains in 2011 to work as SDSU Extension's Climate Field Specialist and has been state climatologist since 2017.

Edwards is chagrined that climate change is often situated as a political rather than scientific phenomenon. "That's the

heart of the discussion, you know?" says Edwards. "It's a challenge in that it's so tied to political motivations. For better or worse, Al Gore was out there early on, telling the story. So, there's a political connotation. And a recent survey showed that, based on your political affiliation and what church you go to, you can guess with better than two-thirds accuracy what your belief in climate change is. But the science shows changes in climate for going on 30 years."

Stationed in SDSU's College of Agriculture and Biological Sciences and married into a South Dakota farming family, Edwards works with farmers and ranchers on programs that mitigate hazards posed by making a living from the land, such as weed and disease control and pesticide education, but her expertise lies in how weather impacts decisions on the farm and ranch.

Edwards says climate change primarily manifests in South Dakota as rising temperatures and increased precipitation. "If we look at a whole year, annual temperatures are rising, but not the same in every season. Our winters are warming faster than any other season. Which is not to say we're going to be 40-degrees every



State Climatologist Laura Edwards.



Scientists land a helicopter on Greenland's Jakobshavn Glacier to study melting.

Photo: WGBH

winter. Meanwhile, North and South Dakota are getting wetter, faster, than almost anywhere else in the country. That's happening in the spring and fall seasons. We are 20-30% wetter than we saw 30-50 years ago."

Eyeballing the impact of climate change can be tricky in a climate as variable as South Dakota's. We don't have dramatic glacial melting or coastal flooding. "People can mix weather and climate up," says Edwards. "Folks may joke that it's been so cold – what happened to global warming? But it's more than just warming. We still have ups and downs. We still have El Niño and La Niña affecting us up here, but we're looking at longer term trends."

Another challenge is lexical imprecision. "The language people use makes it sound like a step change when it's really more of a gradual change," says Edwards. Global "warming" connotes scorched earth and doesn't account for fluctuations. "But in our summers, temperatures are about level or even slightly cooler in eastern South Dakota," says Edwards. "Research and discussion wonders if this is linked to a change in land use, going from wheat and fallow to more corn and soybeans? Is converting pasture and range into row crops changing temperature? We don't quite know, but that's what we're seeing down through Nebraska and further south."

Edwards likens the trajectory of climate change to walking a black lab. "In my metaphor, you're walking a dog and you're going in that general direction, but the dog is moving up-and-down, left-and-right. Our climate is up-and-down, left-and-right, but we're going toward this general direction, which is wetter and warmer,

in South Dakota."

For the most part, according to Edwards, history sides with science. "The computer climate models have proven their worth over time. They've predicted where we are today. The trends we're seeing have been consistent with the same story we've heard for 25 years. I have more confidence in what science can tell us about the changing climate."

Edwards wants to play the hand that's been dealt, not quibble over the stacking of the deck. "In this part of the country, we really have an opportunity," contends Edwards. "In general, we have longer growing seasons and more moisture, so hopefully we're not as moisture-limited. We have an opportunity to increase yields, add some diversity in our cropping systems. But it's a challenge because we are still in a northern region and we don't really have a long growing season."

Adjusting to what she deems the "new normal" has added benefits, says Edwards. "I'm not a huge activist myself, but we can adapt to climate change and maybe mitigate to make it less of an impact in the first place. There's more work that can get done in addressing carbon in the agricultural system. Adopting no-till type of practice and cover crops between your cash crops to help keep carbon in the ground."

The movement toward soil health is one adaptive measure South Dakota's producers are undertaking that also mitigates climate change. "Those same management practices that lead to good soil health also make you more resilient to extremes in climate and weather – wet, dry, cold and warm," says Edwards. "Good soil means you can hold moisture better, reduce your risk of really bad drought impacts and, to a degree, avoid soil runoff and loss issues."

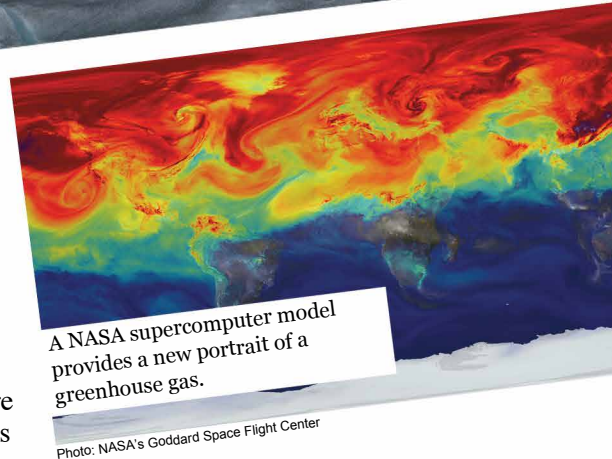


Photo: NASA's Goddard Space Flight Center

Edwards' pragmatism and tendency to accentuate the positive make her reluctant to remark on 2018's climate outlook. "I hate to be the bearer of bad news," says Edwards. "Spring looks variable, but the summer in the central plains looks like there's a pretty large area of warmer and drier. That could affect us in southern South Dakota mid-summer. There's always a week where it's hot and dry and you just hope it doesn't happen during pollination for corn or some critical time. But I see it as something we should at least be prepared for." ▼

For in-depth research on climate trends, projections and impacts, including special reports on the Great Plains region, Edwards suggests the following websites:

Climate Science Special Report
www.Science2017.GlobalChange.gov

Third National Climate Assessment
www.nca2014.GlobalChange.gov
(The forthcoming Fourth Report, according to Edwards, will have more detail on tribal land/tribal nation impacts, and the Great Plains region will be localized into North and South.)

NOVA Decoding the Weather Machine

SDPB1: Wednesday, April 18, 7pm (6 MT)

**SDPB2: Thursday, April 19, 6 & 11pm
(5 & 10 MT)**

SDPB-TV Daytime Programming

Primetime listings on pages 8-15


| SDPB1 | WEEKDAYS | SATURDAYS | SUNDAYS |
|-----------------|--------------------------------------|---|--|
| 5am / 4 MT | Newsline | Beads, Baubles & Jewels | Dakota Life ▼ |
| 5:30 / 4:30 MT | Fitness program | Dakota Life ▼ | Dinosaur Train |
| 6am / 5 MT | BBC World News | Mr. Roger's Neighborhood | Sesame Street |
| 6:30 / 5:30 MT | Cat in the Hat | Berenstain Bears | Daniel Tiger's Neighborhood |
| 7am / 6 MT | Nature Cat | Pinkalicious & Peterrific | Pinkalicious & Peterrific |
| 7:30 / 6:30 MT | Curious George | Splash and Bubbles | Splash and Bubbles |
| 8am / 7 MT | Pinkalicious & Peterrific | Curious George | Curious George |
| 8:30 / 7:30 MT | Daniel Tiger's Neighborhood | Nature Cat | Nature Cat |
| 9am / 8 MT | | Ready Jet Go! | Ready Jet Go! |
| 9:30 / 8:30 MT | Splash and Bubbles | Bob the Builder | Wild Kratts |
| 10am / 9 MT | Ready, Jet, Go! | Fons & Porter's Love of Quilting | Odd Squad |
| 10:30 / 9:30 MT | Super Why! | Fresh Quilting | On Call ▼ |
| 11am / 10 MT | Dinosaur Train | Quilt in a Day | |
| 11:30/10:30MT | Peg + Cat | Sewing with Nancy | Market to Market |
| Noon / 11 MT | Sesame Street | It's Sew Easy | Native Report |
| 12:30 / 11:30MT | Splash and Bubbles | Woodwright's Shop | Motorweek |
| 1pm / Noon MT | Curious George | Woodsmith Shop | Repeat of previous Thursday 8pm (7 MT) |
| 1:30 / 12:30 MT | Pinkalicious & Peterrific | This Old House Hour | |
| 2pm / 1 MT | Educational program | | Chef's Life Cook's Country Fine Cooking |
| 2:30 / 1:30 MT | Wild Kratts | | |
| 3pm / 2 MT | | | |
| 3:30 / 2:30MT | Odd Squad | Milk Street Television | Rick Steves' Europe |
| 4pm / 3 MT | | Cyberchase | Martha Stewart |
| 4:30 / 3:30 MT | Arthur | Classic Gospel | Antiques Roadshow |
| 5pm / 4 MT | Nightly Business Report | | |
| 5:30 / 4:30 MT | | | |

| SDPB2 | MONDAYS | TUESDAYS | WEDNESDAYS | THURSDAYS | FRIDAYS | SATURDAYS | SUNDAYS | | | | | |
|-----------------|---|---|---|---|---|--|---|-----------------------|------------------------|------------------------|------------------------|------------------------|
| 5am / 4 MT | Overheard w/ Smith | Wealthtrack | To the Contrary | Scully/World Show | Well Read | Second Opinion | On Story | | | | | |
| 5:30 / 4:30 MT | Open Mind | Asia Insight | Between the Lines | Second Opinion | Closer to Truth | Wealthtrack | To the Contrary | | | | | |
| 6am / 5 MT | Newsroom Tokyo | Newsroom Tokyo | Newsroom Tokyo | Newsroom Tokyo | Newsroom Tokyo | To the Contrary | Washington Week | | | | | |
| 6:30 / 5:30 MT | | | | | | Washington Week | Open Mind | | | | | |
| 7am / 6 MT | Various history, documentary, news, science & nature. | Various history, documentary, news, science & nature. | Various history, documentary, news, science & nature. | Various history, documentary, news, science & nature. | Various history, documentary, news, science & nature. | Various history, documentary, news, science & nature. | Focus on Europe | | | | | |
| 7:30 / 6:30 MT | | | | | | | Global 3000 | | | | | |
| 8am / 7 MT | | | | | | | America ReFramed | | | | | |
| 8:30 / 7:30 MT | | | | | | | | | | | | |
| 9am / 8 MT | | | | | | | | | | | | |
| 9:30 / 8:30 MT | | | | | | | Wealthtrack | | | | | |
| 10am / 9 MT | | | | | | | | Second Opinion | | | | |
| 10:30 / 9:30 MT | | | | | | | Various history, documentary, news, science & nature. | | | | | |
| 11am / 10 MT | | | | | | | | On Call ▼ | Amanpour on PBS | Amanpour on PBS | Amanpour on PBS | Amanpour on PBS |
| 11:30 / 10:30MT | | | | | | | | | | | | |
| Noon / 11 MT | Overheard w/ Smith | Wealthtrack | To the Contrary | Scully/World Show | Well Read | Various history, documentary & public affairs programming. | | | | | | |
| 12:30 / 11:30MT | Open Mind | Asia Insight | Between the Lines | Second Opinion | Closer to Truth | | | | | | | |
| 1pm / Noon MT | Documentary, news & science. | Documentary, news & science. | Documentary, news & science. | Documentary, news & science. | Documentary, news & science. | | To the Contrary | | | | | |
| 1:30 / 12:30 MT | | | | | | | Washington Week | | | | | |
| 2pm / 1 MT | | | | | | | Open Mind | | | | | |
| 2:30 / 1:30 MT | | | | | | | Focus on Europe | | | | | |
| 3pm / 2 MT | | | | | | | Global 3000 | | | | | |
| 3:30 / 2:30MT | | | | | | | On Story | | | | | |
| 4pm / 3 MT | | | | | | | Newsline | Newsline | On Call ▼ | Newsline | Newsline | To the Contrary |
| 4:30 / 3:30 MT | | | | | | | DW News | DW News | On Call ▼ | DW News | DW News | Washington Week |
| 5pm / 4 MT | Documentary | Documentary | Documentary | Documentary | Documentary | PBS NewsHour | | | | | | |
| 5:30 / 4:30 MT | | | | | | In Principle | PBS NewsHour | | | | | |
| | | | | | | | SDPB Documentary ▼ & various | | | | | |

Create – SDPB3 Programming

| | SDPB3 | SUNDAY & WEDNESDAY | MONDAY & FRIDAY | TUESDAY & THURSDAY | SATURDAY THEME DAYS | | |
|------------------|----------------------|--|---------------------|-------------------------------|-------------------------------|-------------------------|-------------------|
| OVERNIGHT | 1am / Mid.MT | Lidia's Kitchen | Martha Stewart | Martha Stewart | Lidia's Kitchen | Lidia's Kitchen | |
| | 1:30 / 12:30MT | America's Test Kitchen | | America's Test Kitchen | Cook's Country | Cook's Country | |
| | 2am / 1 MT | Chef's Life | Real Food | Fine Cooking | Chef's Life | Chef's Life | |
| | 2:30 / 1:30 MT | Weeknight Meals | | Weeknight Meals | Weeknight Meals | Cooking (various) | |
| | 3am / 2 MT | This Old House | Woodwright's Shop | Ask This Old House | Woodwright's Shop | This Old House | |
| | 3:30 / 2:30MT | Globe Trekker | Travelscope | Rick Steves' Europe | Travelscope | Globe Trekker | |
| | 4am / 3 MT | | Travels w/ Darley | Destination Craft | Travels w/ Darley | | Destination Craft |
| | 4:30 / 3:30MT | Lidia's Kitchen | Martha Stewart | Martha Stewart | Lidia's Kitchen | Lidia's Kitchen | |
| MORNING | 5am / 4 MT | Knit and Crochet Now | | Quilting Arts | Fresh Quilting | Sewing w/Nancy | It's Sew Easy |
| | 5:30 / 4:30 MT | Landscapes Through Time | | Paint This with Jerry Yarnell | | Joy of Painting | |
| | 6am / 5 MT | New Scandinavian Cooking | | Kitchen Wisdom | | Family Ingredients | |
| | 6:30 / 5:30 MT | Ciao Italia | | Taste the Islands | | Joanne Weir Gets Fresh | |
| | 7am / 6 MT | Baking with Julia | | Secrets of a Chef | | Dining w/ the Chef | My Greek Table |
| | 7:30 / 6:30 MT | The Free Range | | More Fast Food My Way | | New Orleans Cooking | |
| | 8am / 7 MT | Travel (various) | | Music Voyager | | Family Travel | |
| | 8:30 / 7:30 MT | Journeys in Japan | In the Americas | Travelscope | | Curious Traveler | |
| | 9am / 8 MT | This Old House | | This Old House | | Woodwright's Shop | |
| | 9:30 / 8:30 MT | American Woodshop | | Craftman's Legacy | | Woodsmith Shop | |
| | 10am / 9 MT | Garden Smart | | P. Allen Smith's Garden Home | | Growing a Greener World | |
| | 10:30 / 9:30 MT | For Your Home | Craft in America | Beads, Baubles & Jewels | Make it Artsy | Start Up | |
| | 11am / 10 MT | | | Quilting Arts | Fresh Quilting | Sewing w/Nancy | It's Sew Easy |
| | 11:30 / 10:30MT | | | Wyland's Art Studio | Paint This with Jerry Yarnell | | Joy of Painting |
| 12:30 / 11:30MT | Scandinavian Cooking | | | Kitchen Wisdom | | Family Ingredients | |
| AFTERNOON | 12:30 / 11:30MT | Various cooking, travel and crafts programming | Ciao Italia | Taste the Islands | | Joanne Weir Gets Fresh | |
| | 1pm / Noon MT | | Taste of Louisiana | Secrets of a Chef | | Dining w/ the Chef | My Greek Table |
| | 1:30 / 12:30 MT | | Mexico - One Plate | More Fast Food My Way | | New Orleans Cooking | |
| | 2pm / 1 MT | | Rudy Maxa's World | Music Voyager | | Family Travel | |
| | 2:30 / 1:30 MT | | In the Americas | Travelscope | | Curious Traveler | |
| | 3pm / 2 MT | | Rick Steves' Europe | Rick Steves' Europe | | Rick Steves' Europe | |
| | 3:30 / 2:30MT | | American Woodshop | Craftman's Legacy | | Woodsmith Shop | |
| | 4pm / 3 MT | | Garden Smart | P. Allen Smith's Garden Home | | Growing a Greener World | |
| | 4:30 / 3:30MT | | Craft in America | Beads, Baubles & Jewels | Make it Artsy | Start Up | |
| | 5pm / 4 MT | | | This Old House | Woodwright's Shop | | |
| EVENING | 5:30/4:30 MT | Weeknight Meals | | Weeknight Meals | | Weeknight Meals | |
| | 6pm / 5 MT | Real Good Food | | Simply Ming | | Pati's Mexican Table | |
| | 6:30 / 5:30 MT | Nick Stellino | | Heart & Soul | | Milk Street Television | |
| | 7pm / 6 MT | Martha Stewart | Lidia's Kitchen | Lidia's Kitchen | | Martha Stewart | |
| | 7:30 / 6:30 MT | America's Test Kitchen | Cook's Country | Cook's Country | | America's Test Kitchen | |
| | 8pm / 7 MT | Fine Cooking | Chef's Life | Chef's Life | | Fine Cooking | |
| | 8:30 / 7:30 MT | Weeknight Meals | | Weeknight Meals | | Weeknight Meals | |
| | 9pm / 8 MT | This Old House | | This Old House | | Woodwright's Shop | |
| | 9:30 / 8:30 MT | Rick Steves' Europe | | Globe Trekker | | Travelscope | |
| | 10pm / 9 MT | Destination Craft | | Globe Trekker | | Two for the Road | |
| | 10:30 / 9:30 MT | Martha Stewart | Lidia's Kitchen | Lidia's Kitchen | | Martha Stewart | |
| | 11pm / 10 MT | America's Test Kitchen | Cook's Country | Cook's Country | | America's Test Kitchen | |
| | 11:30 / 10:30MT | Real Good Food | | Simply Ming | | Pati's Mexican Table | |
| | Mid. / 11 MT | New Scandinavian Cooking | | Kitchen Wisdom | | Family Ingredients | |
| | 12:30 / 11:30MT | Equitrekking | | Born to Explore | | Bare Feet | |

SDPB Kids airs PBS Kids shows 24/7! Details and schedule at SDPB.org/kids24.

- SDPB Television programs are Closed Captioned for the Hearing Impaired.
- Schedule is subject to change. Visit SDPB.org/tvschedules for program details and schedule changes.
-  Indicates locally produced programming.
- SDPB1, SDPB2, SDPB3 and SDPB Kids are available free over-the-air via antenna and on most cable systems. Call your local provider to find out where you can find them on your cable system.

SUNDAY – APRIL 1

SDPB1

Noon (11:00 MT) **Native Report**

12:30 (11:30 MT) **MotorWeek**

1:00 (Noon MT) **Deadwood Pioneer: A Face from the Past** 🏹

2:00 (1:00 MT) **Masterpiece Downton Abbey, Season 1**

3:30 (2:30 MT) **Twirl Girls**

4:00 (3:00 MT) **Rick Steves' Europe**

4:30 (3:30 MT) **Samantha Brown's Places to Love**

5:00 (4:00 MT) **Antiques Roadshow St. Louis, Hour Three**

6:00 (5:00 MT) **Midsomer Murders Small Mercies**

7:00 (6:00 MT) **Call the Midwife**

8:00 (7:00 MT) **Masterpiece Child in Time**

9:30 (8:30 MT) **Little Women: A Timeless Story**

10:00 (9:00 MT) **Search for the Last Supper**

11:00 (10:00 MT) **Globe Trekker Food Hour: Southern China**

Midnight (11:00 MT) **Washington Week**

SDPB2

Noon (11:00 MT) **America's Heartland**

12:30 (11:30 MT) **Start Up**

1:00 (Noon MT) **To the Contrary**

1:30 (12:30 MT) **Washington Week**

2:00 (1:00 MT) **Open Mind**

2:30 (1:30 MT) **Focus on Europe**

3:00 (2:00 MT) **Global 3000**

3:30 (2:30 MT) **On Story**

4:00 (3:00 MT) **Badlands: Nature's Time Capsule** 🏹

5:00 (4:00 MT) **PBS NewsHour Weekend**

5:30 (4:30 MT) **Anne Morrow Lindbergh: You'll Have the Sky**

6:00 (5:00 MT) **Search for the Last Supper**

7:00 (6:00 MT) **Nature Leave It to Beavers**

8:00 (7:00 MT) **Reel South Divided City**

8:30 (7:30 MT) **Reel South Jonah Stands Up**

9:00 (8:00 MT) **American Conscience: The Reinhold**

10:00 (9:00 MT) **Let There Be Light**

11:00 (10:00 MT) **Nature Leave It to Beavers**

Midnight (11:00 MT) **Reel South Divided City**

MONDAY – APRIL 2

SDPB1

6:00 (5:00 MT) **PBS NewsHour**

7:00 (6:00 MT) **Antiques Roadshow Portland, Hour One**

8:00 (7:00 MT) **Antiques Roadshow Little Rock, Hour One**

9:00 (8:00 MT) **Independent Lens When God Sleeps**

10:30 (9:30 MT) **BBC World News**

11:00 (10:00 MT) **Amanpour on PBS**

11:30 (10:30 MT) **Beyond 100 Days**

Midnight (11:00 MT) **Stories from the Stage**

SDPB2

6:00 (5:00 MT) **Price of Peace: A Personal Exploration**

7:00 (6:00 MT) **Nuclear Requiem**

8:00 (7:00 MT) **Our American Family: The Barreras**

8:30 (7:30 MT) **Stories from the Stage**

9:00 (8:00 MT) **PBS NewsHour**

10:00 (9:00 MT) **Nightly Business Report**

10:30 (9:30 MT) **To the Contrary**

11:00 (10:00 MT) **Price of Peace: A Personal Exploration**

Midnight (11:00 MT) **Nuclear Requiem**

TUESDAY – APRIL 3

SDPB1

6:00 (5:00 MT) **PBS NewsHour**

7:00 (6:00 MT) **American Experience Roads to Memphis**

8:00 (7:00 MT) **Black America Since MLK: And Still I Rise**

10:00 (9:00 MT) **Dakota Life** 🏹 *Honoring Heroes*

10:30 (9:30 MT) **BBC World News**

11:00 (10:00 MT) **Amanpour on PBS**

11:30 (10:30 MT) **Beyond 100 Days**

Midnight (11:00 MT) **Stories from the Stage**

SDPB2

6:00 (5:00 MT) **Reel South Divided City**

6:30 (5:30 MT) **Reel South Jonah Stands Up**

7:00 (6:00 MT) **America ReFramed Milwaukee 53206**

8:00 (7:00 MT) **Coexist**

9:00 (8:00 MT) **PBS NewsHour**

10:00 (9:00 MT) **Nightly Business Report**

10:30 (9:30 MT) **Global 3000**

11:00 (10:00 MT) **America ReFramed Milwaukee 53206**

Midnight (11:00 MT) **Coexist**

WEDNESDAY – APRIL 4

SDPB1

6:00 (5:00 MT) **PBS NewsHour**

7:00 (6:00 MT) **Nature Sex, Lies and Butterflies**

8:00 (7:00 MT) **Black America Since MLK: And Still I Rise**

10:00 (9:00 MT) **Dakota Life** 🏹 *Joy*

10:30 (9:30 MT) **BBC World News**

11:00 (10:00 MT) **Amanpour on PBS**

11:30 (10:30 MT) **Beyond 100 Days**

Midnight (11:00 MT) **Stories from the Stage**



Photo: Pinewood Television SunnyMarch TV and MASTERPIECE

A moment of distraction triggers a crisis in the lives of a happy, successful British couple on **Masterpiece: Child in Time**, Ian McEwan's haunting, award-winning novel of a lost child and redeemed love. See the performance by Benedict Cumberbatch that has critics raving. Also stars Kelly Macdonald (*Harry Potter, Boardwalk Empire*).

SDPB1: Sunday, April 1, 8pm (7 MT)

SDPB2

6:30 (5:30 MT) **POV Beats of the Antonov**

7:30 (6:30 MT) **Independent Lens When God Sleeps**

9:00 (8:00 MT) **PBS NewsHour**

10:00 (9:00 MT) **Nightly Business Report**

10:30 (9:30 MT) **Focus on Europe**

11:00 (10:00 MT) **POV Beats of the Antonov**

Midnight (11:00 MT) **Frontline When God Sleeps**

THURSDAY – APRIL 5

SDPB1

6:00 (5:00 MT) **PBS NewsHour**

7:00 (6:00 MT) **On Call** 🏹 *Caring for Your Child or Grandchild*

8:00 (7:00 MT) **Dakota Life** 🏹

8:30 (7:30 MT) **Savor Dakota** 🏹 *Desserts*

9:00 (8:00 MT) **Doc Martin**

10:00 (9:00 MT) **Dakota Life** 🏹 *Dark Rooms and Abandoned Towns*

10:30 (9:30 MT) **BBC World News**

11:00 (10:00 MT) **Amanpour on PBS**

11:30 (10:30 MT) **Beyond 100 Days**

Midnight (11:00 MT) **Stories from the Stage**

SDPB2

6:00 (5:00 MT) **Black America Since MLK: And Still I Rise**

8:00 (7:00 MT) **American Experience Roads to Memphis**

9:00 (8:00 MT) **PBS NewsHour**

10:00 (9:00 MT) **Nightly Business Report**

10:30 (9:30 MT) **Scully: The World Show**

11:00 (10:00 MT) **Black America Since MLK: And Still I Rise**



Photo: Charles Dharapak

Henry Louis Gates, Jr. looks at the last 50 years of African-American history on **Black America Since MLK: Still I Rise**. From Stokely Carmichael to Barack Obama, James Brown to Beyoncé, Gates charts the remarkable progress made and raises hard questions about obstacles that remain.

SDPB1: Tuesday, April 3 & Wednesday, April 4, 8pm (7 MT)

SDPB2: Thursday, April 5 & Friday, April 6, 6 & 11pm (5 & 10 MT)

FRIDAY – APRIL 6

SDPB1

6:00 (5:00 MT) **PBS NewsHour**
 7:00 (6:00 MT) **Washington Week**
 7:30 (6:30 MT) **Market to Market**
 8:00 (7:00 MT) **Soundbreaking** *Going Electric*
 9:00 (8:00 MT) **Soundbreaking** *Four on the Floor*
 10:00 (9:00 MT) **Soundbreaking** *The World is Yours*
 11:00 (10:00 MT) **Amanpour on PBS**
 11:30 (10:30 MT) **Savor Dakota** *Desserts*
 Midnight (11:00 MT) **Stories from the Stage**

SDPB2

6:00 (5:00 MT) **Black America Since MLK: And Still I Rise**
 8:00 (7:00 MT) **Ripple of Hope**
 9:00 (8:00 MT) **PBS NewsHour**
 10:00 (9:00 MT) **Nightly Business Report**
 10:30 (9:30 MT) **Asia Insight**
 11:00 (10:00 MT) **Black America Since MLK: And Still I Rise**

SATURDAY – APRIL 7

SDPB1

6:00 (5:00 MT) **The Lawrence Welk Show**
 7:00 (6:00 MT) **Doc Martin**
 8:00 (7:00 MT) **Keeping Up Appearances**
 8:30 (7:30 MT) **As Time Goes By**
 9:00 (8:00 MT) **Father Brown**
 10:00 (9:00 MT) **No Cover, No Minimum** *The Claudettes*
 11:00 (10:00 MT) **Austin City Limits** *Cyndi Lauper*
 Midnight (11:00 MT) **Music Voyager** *Morocco: The Heart of Morocco*

SDPB2

12:30 (11:30 MT) **Reel South**
 1:00 (Noon MT) **Black America Since MLK: And Still I Rise**
 3:00 (2:00 MT) **Ripple of Hope**
 4:00 (3:00 MT) **To the Contrary**
 4:30 (3:30 MT) **Washington Week**
 5:00 (4:00 MT) **PBS NewsHour Weekend**
 5:30 (4:30 MT) **Me Too, Now What?**
 6:00 (5:00 MT) **Trust Docs**
 6:30 (5:30 MT) **Poetry in America**
 7:00 (6:00 MT) **Big Voice**
 8:00 (7:00 MT) **Sweet Dillard**
 9:00 (8:00 MT) **America ReFramed** *Milwaukee 53206*
 10:00 (9:00 MT) **Coexist**
 11:00 (10:00 MT) **Big Voice**
 Midnight (11:00 MT) **Sweet Dillard**

SUNDAY – APRIL 8

SDPB1

Noon (11:00 MT) **Native Report**
 12:30 (11:30 MT) **MotorWeek**

1:00 (Noon MT) **Dakota Life** *Preserving Traditions*
 1:30 (12:30 MT) **Savor Dakota** *Desserts*
 2:00 (1:00 MT) **Masterpiece** *Downton Abbey, Season 1*
 3:30 (2:30 MT) **ForEveryone.Net**
 4:00 (3:00 MT) **Rick Steves' Europe**
 4:30 (3:30 MT) **Samantha Brown's Places to Love**
 5:00 (4:00 MT) **Antiques Roadshow** *Portland, Hour One*
 6:00 (5:00 MT) **Midsomer Murders** *Small Mercies*
 7:00 (6:00 MT) **Call the Midwife**
 8:00 (7:00 MT) **Masterpiece** *Unforgotten*
 9:30 (8:30 MT) **Last Tango in Halifax**
 10:30 (9:30 MT) **Shiloh: The Devil's Own Day**
 11:00 (10:00 MT) **Globe Trekker** *Tough Trains: Bolivia*
 Midnight (11:00 MT) **Washington Week**

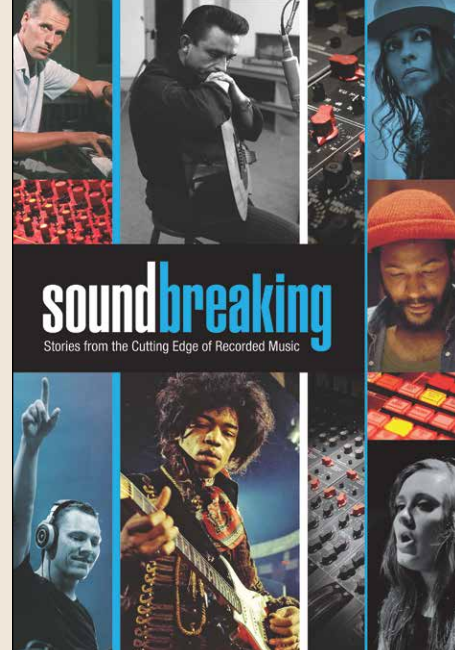
SDPB2

Noon (11:00 MT) **America's Heartland**
 12:30 (11:30 MT) **Start Up**
 1:00 (Noon MT) **To the Contrary**
 1:30 (12:30 MT) **Washington Week**
 2:00 (1:00 MT) **Open Mind**
 2:30 (1:30 MT) **Focus on Europe**
 3:00 (2:00 MT) **Global 3000**
 3:30 (2:30 MT) **On Story**
 4:00 (3:00 MT) **America ReFramed** *Milwaukee 53206*
 5:00 (4:00 MT) **PBS NewsHour Weekend**
 5:30 (4:30 MT) **Dynasty on the Diamond: Post 22 Baseball**
 6:00 (5:00 MT) **Violins of Hope: Strings of the Holocaust**
 7:00 (6:00 MT) **Nature** *Sex, Lies and Butterflies*
 8:00 (7:00 MT) **Reel South** *120 Days*
 9:00 (8:00 MT) **Treblinka's Last Witness**
 10:30 (9:30 MT) **Our American Family: The Mays**
 11:00 (10:00 MT) **Nature** *Sex, Lies and Butterflies*
 Midnight (11:00 MT) **Reel South** *120 Days*

MONDAY – APRIL 9

SDPB1

6:00 (5:00 MT) **PBS NewsHour**
 7:00 (6:00 MT) **Antiques Roadshow** *Portland, Hour Two*
 8:00 (7:00 MT) **Antiques Roadshow** *Little Rock, Hour Two*
 9:00 (8:00 MT) **Independent Lens** *The Art of the Shine*
 10:00 (9:00 MT) **Dakota Life** *Preserving Traditions*
 10:30 (9:30 MT) **BBC World News**
 11:00 (10:00 MT) **Amanpour on PBS**
 11:30 (10:30 MT) **Beyond 100 Days**
 Midnight (11:00 MT) **Stories from the Stage**



Dream watching for music lovers and gearheads alike, the in-depth series **Soundbreaking** combines unprecedented access to some of the most celebrated music artists, producers and innovators with rare archival studio footage and an extensive musical soundtrack to deliver a wide-ranging series on the art of music recording.
 SDPB1: Fridays, April 6 & 13, 8pm (7 MT)

SDPB2

6:00 (5:00 MT) **True North: The Sean Swarner Story**
 7:00 (6:00 MT) **4 Wheel Bob**
 8:00 (7:00 MT) **Local USA**
 8:30 (7:30 MT) **Stories from the Stage** *Holiday Horror*
 9:00 (8:00 MT) **PBS NewsHour**
 10:00 (9:00 MT) **Nightly Business Report**
 10:30 (9:30 MT) **To the Contrary**
 11:00 (10:00 MT) **True North: The Sean Swarner Story**
 Midnight (11:00 MT) **4 Wheel Bob**

TUESDAY – APRIL 10

SDPB1

6:00 (5:00 MT) **PBS NewsHour**
 7:00 (6:00 MT) **Secret of the Dead**
 8:00 (7:00 MT) **American Experience** *Perfect Crime*
 9:00 (8:00 MT) **Frontline** *Trump's Takeover*
 10:00 (9:00 MT) **Dakota Life** *Quite a Ride*
 10:30 (9:30 MT) **BBC World News**
 11:00 (10:00 MT) **Amanpour on PBS**
 11:30 (10:30 MT) **Beyond 100 Days**
 Midnight (11:00 MT) **Stories from the Stage**

Photo: John Rogers/Mainstreet Productions



Follow a stone-cold case of murder that tests the wits of crime-solving duo DCI Cassie Stuart and DS Sunny Khan on **Masterpiece: Unforgotten**. This critically acclaimed series was nominated for BAFTA's Best Drama and stars Nicola Walker from *Last Tango in Halifax* and Sanjeev Bhaskar from *Indian Summers*.
 SDPB1: Sundays, April 8, 15, 22 & 29, 8pm (7 MT)



Photo: Max Fuchs

Discover the story of the 550,000 brave Jewish Americans who served in World War II on **GI Jews: Jewish Americans in WWII**. Told through the eyes of the servicemen and women, the film brings to life the little-known story of Jews in World War II – as active participants in the fight against Hitler, bigotry, and intolerance. They fought not only for their country, but for their beliefs and brethren across the world.

SDPB1: Wednesday, April 11, 9pm (8 MT)
SDPB2: Thursday, April 12, 6 & 11pm (5 & 10 MT)

(April 10, continued)

SDPB2

- 6:00 (5:00 MT) Understanding the Opioid Epidemic**
- 7:00 (6:00 MT) America ReFramed *Beyond the Wall***
- 8:30 (7:30 MT) Drugged Driving**
- 9:00 (8:00 MT) PBS NewsHour**
- 10:00 (9:00 MT) Nightly Business Report**
- 10:30 (9:30 MT) Global 3000**
- 11:00 (10:00 MT) America ReFramed *Beyond the Wall***

WEDNESDAY – APRIL 11

SDPB1

- 6:00 (5:00 MT) PBS NewsHour**
- 7:00 (6:00 MT) Nature *Moose: Life of a Twig Eater***
- 8:00 (7:00 MT) NOVA *Holocaust Escape Tunnel***
- 9:00 (8:00 MT) GI Jews: Jewish Americans in WWII**
- 10:30 (9:30 MT) BBC World News**
- 11:00 (10:00 MT) Amanpour on PBS**
- 11:30 (10:30 MT) Beyond 100 Days**
- Midnight (11:00 MT) Stories from the Stage**

SDPB2

- 6:00 (5:00 MT) Frontline *Second Chance Kids***
- 7:30 (6:30 MT) Independent Lens *The Art of the Shine***
- 8:00 (7:00 MT) Frontline *Trump's Takeover***
- 9:00 (8:00 MT) PBS NewsHour**
- 10:00 (9:00 MT) Nightly Business Report**
- 10:30 (9:30 MT) Focus on Europe**
- 11:00 (10:00 MT) Frontline *Second Chance Kids***
- Midnight (11:00 MT) Independent Lens *The Art of the Shine***

THURSDAY – APRIL 12

SDPB1

- 6:00 (5:00 MT) PBS NewsHour**
- 7:00 (6:00 MT) On Call *Problems with Hormonal Balance***
- 8:00 (7:00 MT) South Dakota Focus *Social Media***
- 9:00 (8:00 MT) Doc Martin**
- 10:00 (9:00 MT) Dakota Life *Tales and Talent***
- 10:30 (9:30 MT) BBC World News**
- 11:00 (10:00 MT) Amanpour on PBS**
- 11:30 (10:30 MT) Beyond 100 Days**
- Midnight (11:00 MT) Stories from the Stage**

SDPB2

- 6:00 (5:00 MT) GI Jews: Jewish Americans in WWII**
- 7:30 (6:30 MT) Trezoros: The Lost Jews of Kastoria**
- 9:00 (8:00 MT) PBS NewsHour**
- 10:00 (9:00 MT) Nightly Business Report**
- 10:30 (9:30 MT) Scully: The World Show**
- 11:00 (10:00 MT) GI Jews: Jewish Americans in WWII**

FRIDAY – APRIL 13

SDPB1

- 6:00 (5:00 MT) PBS NewsHour**
- 7:00 (6:00 MT) Washington Week**
- 7:30 (6:30 MT) Market to Market**
- 8:00 (7:00 MT) Soundbreaking *Sound and Vision***
- 9:00 (8:00 MT) Soundbreaking *I Am My Music***
- 10:00 (9:00 MT) In Principle**
- 10:30 (9:30 MT) BBC World News**
- 11:00 (10:00 MT) Amanpour on PBS**
- 11:30 (10:30 MT) Dakota Life *Minute Men***
- Midnight (11:00 MT) Stories from the State**

SDPB2

- 6:00 (5:00 MT) Independent Lens *The Prison in Twelve Landscapes***
- 7:00 (6:00 MT) POV *15 to Life: Kenneth's Story***
- 8:00 (7:00 MT) Frontline *Life on Parole***
- 9:00 (8:00 MT) PBS NewsHour**
- 10:00 (9:00 MT) Nightly Business Report**
- 10:30 (9:30 MT) Asia Insight**
- 11:00 (10:00 MT) Independent Lens *The Prison in Twelve Landscapes***
- Midnight (11:00 MT) POV *15 to Life: Kenneth's Story***

SATURDAY – APRIL 14

SDPB1

- 6:00 (5:00 MT) The Lawrence Welk Show**
- 7:00 (6:00 MT) Doc Martin**
- 8:00 (7:00 MT) Keeping Up Appearances**
- 8:30 (7:30 MT) As Time Goes By**
- 9:00 (8:00 MT) Father Brown**
- 10:00 (9:00 MT) No Cover, No Minimum *Billy Talbot & Ryan Holtzer***
- 11:00 (10:00 MT) Austin City Limits *James Taylor***
- Midnight (11:00 MT) Music Voyager *Morocco: The Spirit – The Spirit***

SDPB2

- 12:00 (11:00 MT) 4 Wheel Bob**

1:00 (Noon MT) True North: The Sean Swarner Story

- 2:00 (1:00 MT) Big Voice**
- 3:00 (2:00 MT) Sweet Dillard**
- 4:00 (3:00 MT) To the Contrary**
- 4:30 (3:30 MT) Washington Week**
- 5:00 (4:00 MT) PBS NewsHour Weekend**
- 5:30 (4:30 MT) In Principle**
- 6:00 (5:00 MT) Trust Docs**
- 6:30 (5:30 MT) Poetry in America**
- 7:00 (6:00 MT) Still Dreaming**
- 8:30 (7:30 MT) Shakespeare Lost, Shakespeare Found**
- 9:00 (8:00 MT) America ReFramed *Beyond the Wall***
- 10:30 (9:30 MT) Drugged Driving**
- 11:00 (10:00 MT) Still Dreaming**

SUNDAY – APRIL 15

SDPB1

- Noon (11:00 MT) Native Report**
- 12:30 (11:30 MT) MotorWeek**
- 1:00 (Noon MT) South Dakota Focus *Social Media***
- 2:00 (1:00 MT) Masterpiece *Downton Abbey, Season 1***
- 3:30 (2:30 MT) Finding Kalman**
- 4:00 (3:00 MT) Rick Steves' Europe**
- 4:30 (3:30 MT) Samantha Brown's Places to Love**
- 5:00 (4:00 MT) Antiques Roadshow *Portland, Hour Two***
- 6:00 (5:00 MT) Midsomer Murders *The Creeper***
- 7:00 (6:00 MT) Call the Midwife**
- 8:00 (7:00 MT) Masterpiece *Unforgotten, Season 1***
- 9:30 (8:30 MT) Last Tango in Halifax**
- 10:30 (9:30 MT) Finding Elizabeth's Soldiers**
- 11:00 (10:00 MT) Globe Trekker *Delhi & Agra***
- Midnight (11:00 MT) Washington Week**

SDPB2

- Noon (11:00 MT) America's Heartland**
- 12:30 (11:30 MT) Start Up**
- 1:00 (Noon MT) To the Contrary**
- 1:30 (12:30 MT) Washington Week**
- 2:00 (1:00 MT) Open Mind**
- 2:30 (1:30 MT) Focus on Europe**
- 3:00 (2:00 MT) Global 3000**
- 3:30 (2:30 MT) On Story**
- 4:00 (3:00 MT) Temples of Justice**



Photo: c/Twig Eaters Inc.

Moose populations are declining at a rapid rate in North America. One reason is that many of the newborn calves are not surviving their first year. To help address this ecological dilemma, one intrepid cameraman spends a year documenting the life of a moose calf and its mother on the touching, absorbing **Nature Moose – Life of a Twig Eater**.
SDPB1: Wednesday, April 11, 7pm (6 MT)
SDPB2: Sunday, April 15, 7 & 11pm (6 & 10 MT)

(April 15, continued)

- 5:00 (4:00 MT) **PBS NewsHour Weekend**
- 5:30 (4:30 MT) **Drugged Driving**
- 6:00 (5:00 MT) **Migrant Kitchen**
- 7:00 (6:00 MT) **Nature Moose: Life of a Twig Eater**
- 8:00 (7:00 MT) **Reel South 62 Days**
- 8:30 (7:30 MT) **Reel South Driven Blind**
- 9:00 (8:00 MT) **Frontline Last Days of Solitary**
- 11:00 (10:00 MT) **Nature Moose: Life of a Twig Eater**
- Midnight (11:00 MT) Reel South 62 Days**

MONDAY – APRIL 16

- SDPB1**
- 6:00 (5:00 MT) **PBS NewsHour**
- 7:00 (6:00 MT) **Antiques Roadshow Portland, Hour Three**
- 8:00 (7:00 MT) **Antiques Roadshow Little Rock, Hour Three**
- 9:00 (8:00 MT) **Independent Lens What Lies Upstream**
- 10:30 (9:30 MT) **BBC World News**
- 11:00 (10:00 MT) **Amanpour on PBS**
- 11:30 (10:30 MT) **Beyond 100 Days**
- Midnight (11:00 MT) Stories from the Stage**

SDPB2

- 6:00 (5:00 MT) **Standing on Sacred Ground Pilgrims & Tourists**
- 7:00 (6:00 MT) **Standing on Sacred Ground Profit & Loss**
- 8:00 (7:00 MT) **Our American Family: The Mays**
- 8:30 (7:30 MT) **Stories from the Stage**
- 9:00 (8:00 MT) **PBS NewsHour**
- 10:00 (9:00 MT) **Nightly Business Report**
- 10:30 (9:30 MT) **To the Contrary**
- 11:00 (10:00 MT) **Standing on Sacred Ground Pilgrims & Tourists**
- Midnight (11:00 MT) Standing on Sacred Ground Profit & Loss**

TUESDAY – APRIL 17

- SDPB1**
- 6:00 (5:00 MT) **PBS NewsHour**
- 7:00 (6:00 MT) **Civilizations**
- 8:00 (7:00 MT) **American Experience The Massie Affair**
- 9:00 (8:00 MT) **Frontline McCain**
- 10:00 (9:00 MT) **Dakota Life Big Celebrations in Small Towns**
- 10:30 (9:30 MT) **BBC World News**
- 11:00 (10:00 MT) **Amanpour on PBS**
- 11:30 (10:30 MT) **Beyond 100 Days**
- Midnight (11:00 MT) Stories from the Stage**

SDPB2

- 6:00 (5:00 MT) **Independent Lens The Prison in Twelve Landscapes**
- 7:00 (6:00 MT) **America ReFramed The Corridor**
- 8:30 (7:30 MT) **Far Afield: A Conservation Love Story**
- 9:00 (8:00 MT) **PBS NewsHour**
- 10:00 (9:00 MT) **Nightly Business Report**
- 10:30 (9:30 MT) **Global 3000**
- 11:00 (10:00 MT) **America ReFramed The Corridor**

WEDNESDAY – APRIL 18

- SDPB1**
- 6:00 (5:00 MT) **PBS NewsHour**
- 7:00 (6:00 MT) **NOVA Living with the Weather Machine**
- 9:00 (8:00 MT) **POV Bill Nye: Science Guy**



Photo: Rahoul Ghose

Follow Bill Nye, once the host of the popular kids show, as he seeks to change the world through science on **POV: Bill Nye the Science Guy**. This behind-the-scenes portrait follows Nye as he takes off his Science Guy lab coat and takes on those who deny climate change, evolution, and a science-based world view. The film features Bill Nye, Neil deGrasse Tyson, Ann Druyan and many others.
SDPB1: Wednesday, April 18, 9pm (8 MT)
SDPB2: Saturday, April 21, 7 & 11pm (6 & 10 MT)

- 10:30 (9:30 MT) **BBC World News**
- 11:00 (10:00 MT) **Amanpour on PBS**
- 11:30 (10:30 MT) **Beyond 100 Days**
- Midnight (11:00 MT) Stories from the Stage**

SDPB2

- 6:30 (5:30 MT) **Independent Lens What Lies Upstream**
- 8:00 (7:00 MT) **Frontline McCain**
- 9:00 (8:00 MT) **PBS NewsHour**
- 10:00 (9:00 MT) **Nightly Business Report**
- 10:30 (9:30 MT) **Focus on Europe**
- 11:00 (10:00 MT) **Independent Lens What Lies Upstream**

THURSDAY – APRIL 19

- SDPB1**
- 6:00 (5:00 MT) **PBS NewsHour**
- 7:00 (6:00 MT) **On Call Cardiology Issues**
- 8:00 (7:00 MT) **Points of Pride: South Dakota Quilting Heritage**
- 9:00 (8:00 MT) **Doc Martin**
- 10:00 (9:00 MT) **Dakota Life Passionate Pursuits**
- 10:30 (9:30 MT) **BBC World News**
- 11:00 (10:00 MT) **Amanpour on PBS**
- 11:30 (10:30 MT) **Beyond 100 Days**
- Midnight (11:00 MT) Stories from the Stage**

SDPB2

- 6:00 (5:00 MT) **NOVA Living with the Weather Machine**
- 8:00 (7:00 MT) **Forgotten Coast**
- 9:00 (8:00 MT) **PBS NewsHour**
- 10:00 (9:00 MT) **Nightly Business Report**
- 10:30 (9:30 MT) **Scully: The World Show**
- 11:00 (10:00 MT) **NOVA Living with the Weather Machine**

FRIDAY – APRIL 20

- SDPB1**
- 6:00 (5:00 MT) **PBS NewsHour**
- 7:00 (6:00 MT) **Washington Week**
- 7:30 (6:30 MT) **Market to Market**
- 8:00 (7:00 MT) **Live from Lincoln Center Sutton Foster in Concert**
- 9:00 (8:00 MT) **Landmarks Live in Concert will.i.am**

- 10:00 (9:00 MT) **In Principle**
- 10:30 (9:30 MT) **BBC World News**
- 11:00 (10:00 MT) **Amanpour on PBS**
- 11:30 (10:30 MT) **Dakota Life Arts and Artisans**
- Midnight (11:00 MT) Stories from the Stage**

SDPB2

- 6:00 (5:00 MT) **Himalaya Connection**
- 7:00 (6:00 MT) **Mystery of the Mountain: Hidden in Plain View**
- 8:00 (7:00 MT) **Civilizations**
- 9:00 (8:00 MT) **PBS NewsHour**
- 10:00 (9:00 MT) **Nightly Business Report**
- 10:30 (9:30 MT) **Asia Insight**
- 11:00 (10:00 MT) **Himalaya Connection**
- Midnight (11:00 MT) Mystery of the Mountain: Hidden in Plain View**

SATURDAY- APRIL 21

- SDPB1**
- 6:00 (5:00 MT) **The Lawrence Welk Show**
- 7:00 (6:00 MT) **Doc Martin**
- 8:00 (7:00 MT) **S.D. High School All-State Band 2018**
- 9:30 (8:30 MT) **Dakota Life**
- 10:00 (9:00 MT) **No Cover, No Minimum Josh Hoyer and the Shadowboxed**
- 11:00 (10:00 MT) **Austin City Limits Leon Bridges/Nathaniel Rateliff & The Night Sweats**
- Midnight (11:00 MT) Music Voyager Atlanta: Atlanta's Stage**

SDPB2

- 12:30 (11:30 MT) **Stories from the Stage**
- 1:00 (Noon MT) **Himalaya Connection**
- 2:00 (1:00 MT) **Mystery of the Mountain: Hidden in Plain View**
- 3:00 (2:00 MT) **Civilizations**
- 4:00 (3:00 MT) **To the Contrary**
- 4:30 (3:30 MT) **Washington Week**
- 5:00 (4:00 MT) **PBS NewsHour Weekend**
- 5:30 (4:30 MT) **In Principle**
- 6:00 (5:00 MT) **Trust Docs**
- 6:30 (5:30 MT) **Poetry in America**
- 7:00 (6:00 MT) **POV Bill Nye: Science Guy**
- 8:30 (7:30 MT) **Spectrum: The Story of the Mind**
- 9:00 (8:00 MT) **America ReFramed The Corridor**

(Continued on page 14)



Photo: PBS

Experience the groundbreaking hip-hop artist will.i.am live in concert from London's Royal Albert Hall on **Landmarks Life: will.i.am**. A one-night-only event, the Grammy and Emmy-winning artist performs with The Black Eyed Peas for the first time in over a decade. Chad Smith of the Red Hot Chili Peppers hosts.
SDPB1: Friday, April 20, 9pm (8 MT)

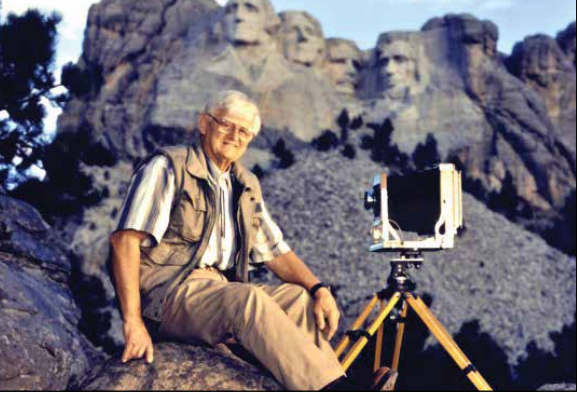


Photo of Bill Groethe, which appeared in *Time Magazine* circa 1990.



Bill Groethe in WWII.



Early motorcycle rally riders in South Dakota.



Groethe's 1948 photo of eight of the nine survivors of the Battle of Little Bighorn.



Dewey Beard, last survivor of the Battle of Little Bighorn.

All photos above by Bill Groethe.

April Dakota Life: Pursuing Passions

This month **Dakota Life** introduces you to South Dakotans pursuing their passions.

Bill Groethe: Lifelong Photographer

Bill Groethe, Rapid City, started taking pictures when he was 8 years old. He was working as a photographer's assistant by the time he was 17. Groethe turned 94 in 2017, so it's safe to say he's spent more time just doing his job than many of us have spent just being awake.

Groethe has worked as a professional photographer since approximately 1936. In the course of his long career, Groethe has taken some famous pictures. In 1948, he took a group photo of the last surviving Indian veterans of the Battle of the Little Bighorn. That same day, he made individual

portraits of the men, using exactly one glass-plate negative for each photo. (Think about that in the digital age). The first time Groethe remembers working at Mount Rushmore was when FDR came to dedicate the Jefferson sculpture. As a photographer's assistant, he helped with the creation of many, many images made at Mount Rushmore during its construction.

No single photograph he's made over the years completely defines him or his body of work. What puts Groethe into his own league is his long-term dedication to quality and the art that captures light and turns it into a physical manifestation of an instant otherwise lost in time. Digital photography? Groethe says, no thanks. Meet the man behind the camera.



Hermis Tall.

Hermis Tall: Champion Indian Horse Relay Racer

We take a look at the sport of Indian Horse Relay, as we meet team members and racers at the Oglala Lakota Nation Rodeo, and present an interview with three-time national champion racer Hermis Tall, 25, who tragically passed away in 2016.

Tune in to SDPB1 for this month's premiere of **Dakota Life**, Thursday, April 5, at 8pm (7 MT). Rebroadcasts Sunday, April 8, at 1pm (noon MT).

Exclusive Escorted

Bursch Travel has taken care of all the details on these exclusive trips.
All you have to do is sit back and enjoy!



Alaska Tour & Cruise

July 14-21, 2018

Aboard the Ruby Princess

Escorted by Krisha & Matt Friede
7-Day Voyage of the Glacier Cruise



Best of the Big Apple 2018

November 15-19 (Holiday Edition)

Escorted by Karen & Todd Dembowski



European River Cruise

Aboard the Artistry II

October 2-15, 2018

Escorted by Pay & Jack Converse



Christmas Markets Tour

November 29 - December 7, 2018

Germany & Austria

Escorted by
Jennifer Nangle &
Lee Hurd

For complete details of each of these trips and others visit

www.burschtravel.com

Bursch Travel

803 Saint Patrick St.
Rapid City, South Dakota

605-342-2700 or

1-800-658-3348



Penthouse Suite

Celebrity Flora.SM Evolution meets revolution.

Exploring the Galapagos Islands, spring 2019.

Introducing Celebrity Flora, the first ship designed and built specifically with the Galapagos in mind. Every space, including the all-suites accommodations, features our innovative outward-facing stateroom concept, getting you closer to the destination than ever before. With every state-of-the-art technology, innovative materials and design—Celebrity Flora is one of the most eco-friendly and environmentally conscious ships sailing the Galapagos today.



Bursch Travel
803 Saint Patrick St.
Rapid City, SD 57701
605-342-2700 or 800-658-3348
www.burschtravel.com

Celebrity **X** Cruises[®]

SAIL BEYOND BORDERS

All images of Celebrity FloraSM are artistic renderings based on current development concepts, which are subject to change without notice. Celebrity Flora and Flora are trademarks of Celebrity Cruises.
©2018 Celebrity Cruises. Ships' registry: Malta and Ecuador. 18061227 - 2/18



Photo:Rahoul Ghose/ PBS

NOVA Wonders is a fresh, lively series that makes complicated concepts accessible while taking a deep dive into the scientific process. Each week, a one-hour episode poses a single big scientific question and takes viewers along on a journey to explore how far we've come in our quest for answers, and how we've managed to get here. Among the intriguing topics pondered are the secret language of animals, what's hidden in the human body, the artificial intelligence technologies that could rival and surpass the abilities of the human mind, the controversial power to engineer life in a lab, and the mysteries of the universe.

SDPB1: Wednesday, April 25, 8pm (7 MT)

SDPB2: Thursday, April 26, 7pm (6 MT)

(April 21, continued from page 11)

10:30 (9:30 MT) **Far Afield: A Conservation Love Story**

11:00 (10:00 MT) **POV Bill Nye: Science Guy**

SUNDAY – APRIL 22

SDPB1

Noon (11:00 MT) **Native Report**

12:30 (11:30 MT) **MotorWeek**

1:00 (Noon MT) **Points of Pride: South Dakota Quilting Heritage**

2:00 (1:00 MT) **Masterpiece Downton Abbey, Season 1**

3:30 (2:30 MT) **Symphony for Nature: The Britt Orchestra at Crater Lake**

4:00 (3:00 MT) **Rick Steves' Europe**

4:30 (3:30 MT) **Samantha Brown's Places to Love**

5:00 (4:00 MT) **Antiques Roadshow Portland, Hour Three**

6:00 (5:00 MT) **Midsomer Murders The Creeper**

7:00 (6:00 MT) **Call the Midwife**

8:00 (7:00 MT) **Masterpiece Unforgotten**

9:30 (8:30 MT) **Last Tango in Halifax**

10:30 (9:30 MT) **Portrait of a Landscape: The Flint Hills**

11:00 (10:00 MT) **Globe Trekker Tough Boats: The Amazon**

Midnight (11:00 MT) **Washington Week**

SDPB2

Noon (11:00 MT) **America's Heartland**

12:30 (11:30 MT) **Start Up**

1:00 (Noon MT) **To the Contrary**

1:30 (12:30 MT) **Washington Week**

2:00 (1:00 MT) **Open Mind**

2:30 (1:30 MT) **Focus on Europe**

3:00 (2:00 MT) **Global 3000**

3:30 (2:30 MT) **On Story**

4:00 (3:00 MT) **Light of the Prairie: Stained Glass in South Dakota**

5:00 (4:00 MT) **PBS NewsHour Weekend**

5:30 (4:30 MT) **Far Afield: A Conversation Love Story**

6:00 (5:00 MT) **Migrant Kitchen Alta California**

6:30 (5:30 MT) **Migrant Kitchen Badmaash**

7:00 (6:00 MT) **Rebels with a Cause**

8:00 (7:00 MT) **Reel South See the Keepers**

9:00 (8:00 MT) **Crowd & The Cloud Even Big Data Starts Small**

10:00 (9:00 MT) **Crowd & The Cloud Citizens + Scientists**

11:00 (10:00 MT) **Rebels with a Cause**

Midnight (11:00 MT) **Reel South See the Keepers**

MONDAY – APRIL 23

SDPB1

6:00 (5:00 MT) **PBS NewsHour**

7:00 (6:00 MT) **Antiques Roadshow Green Bay, Hour One**

8:00 (7:00 MT) **Antiques Roadshow Charleston, Hour One**

9:00 (8:00 MT) **Independent Lens Look & See: Wendell Berry's Kentucky**

10:00 (9:00 MT) **Dakota Life**

10:30 (9:30 MT) **BBC World News**

11:00 (10:00 MT) **Amanpour on PBS**

11:30 (10:30 MT) **Beyond 100 Days**

Midnight (11:00 MT) **Stories from the Stage**

SDPB2

6:00 (5:00 MT) **Standing on Sacred Ground Fire & Ice**

7:00 (6:00 MT) **Standing on Sacred Ground Islands of Sanctuary**

8:00 (7:00 MT) **Our American Family: The Clarks**

8:30 (7:30 MT) **Stories from the Stage**

9:00 (8:00 MT) **PBS NewsHour**

10:00 (9:00 MT) **Nightly Business Report**

10:30 (9:30 MT) **To the Contrary**

11:00 (10:00 MT) **Standing on Sacred Ground Fire & Ice**

Midnight (11:00 MT) **Standing on Sacred Ground Islands & Sanctuary**

TUESDAY – APRIL 24

SDPB1

6:00 (5:00 MT) **PBS NewsHour**

7:00 (6:00 MT) **Civilizations**

8:00 (7:00 MT) **First Civilizations**

9:00 (8:00 MT) **Frontline Trafficked in America**

10:00 (9:00 MT) **Dakota Life** *Pastimes*

10:30 (9:30 MT) **BBC World News**

11:00 (10:00 MT) **Amanpour on PBS**

11:30 (10:30 MT) **Beyond 100 Days**

Midnight (11:00 MT) **Stories from the Stage**

SDPB2

6:00 (5:00 MT) **Shifting Sands: On the Path to Sustainability**

7:00 (6:00 MT) **America ReFramed Through the Repellent Fence**

8:00 (7:00 MT) **Lost Bird Project**

9:00 (8:00 MT) **PBS NewsHour**

10:00 (9:00 MT) **Nightly Business Report**

10:30 (9:30 MT) **Global 3000**

11:00 (10:00 MT) **America ReFramed Through the Repellent Fence**

Midnight (11:00 MT) **Lost Bird Project**

WEDNESDAY – APRIL 25

SDPB1

6:00 (5:00 MT) **PBS NewsHour**

7:00 (6:00 MT) **Nature Natural Born Rebels**

8:00 (7:00 MT) **NOVA Wonders What Are Animals Saying?**

9:00 (8:00 MT) **NOVA Bird Brain**

10:00 (9:00 MT) **Dakota Life**

10:30 (9:30 MT) **BBC World News**

11:00 (10:00 MT) **Amanpour on PBS**

11:30 (10:30 MT) **Beyond 100 Days**

Midnight (11:00 MT) **Stories from the Stage**

SDPB2

6:00 (5:00 MT) **Independent Lens Seed: The Untold Story**

7:00 (6:00 MT) **Independent Lens Look & See: Wendell Berry's Kentucky**

8:00 (7:00 MT) **Frontline Trafficking in America**

9:00 (8:00 MT) **PBS NewsHour**

10:00 (9:00 MT) **Nightly Business Report**

10:30 (9:30 MT) **Focus on Europe**

11:00 (10:00 MT) **Independent Lens Seed: The Untold Story**

Midnight (11:00 MT) **Independent Lens Look & See: Wendell Berry's Kentucky**

THURSDAY – APRIL 26

SDPB1

6:00 (5:00 MT) **PBS NewsHour**

7:00 (6:00 MT) **On Call** *The Broken Hip*



Photo: Nurepia Ltd.

Experience **Civilizations** – the new nine-part series presented in partnership with the BBC that tells the story of art from the dawn of human history to the present day – for the first time on a global scale. This deftly researched series reveals the role art and creative imagination have playing in forging humanity, and introduces views to works of beauty, ingenuity and illumination across cultures.

SDPB1: Tuesdays, April 17 & 24, 7pm (6 MT)

SDPB2: Fridays, April 20 & 27, 5 & 8pm (4 & 7 MT)



Live from Lincoln Center: Leslie Odom, Jr. showcases the winner of the 2016 Tony for Best Leading Actor in a Musical for his legendary performance as Aaron Burr in *Hamilton*. Odom is a jazz vocalist with an actor's ear for lyrics. Get front row and center as he brings his remarkable talent to this intimate performance.
SDPB1: Friday, April 27, 8pm (7 MT)

(April 26, continued)

8:00 (7:00 MT) South Dakota Focus 
Minority Business
9:00 (8:00 MT) Doc Martin
10:00 (9:00 MT) Dakota Life 
10:30 (9:30 MT) BBC World News
11:00 (10:00 MT) Amanpour on PBS
11:30 (10:30 MT) Beyond 100 Days
Midnight (11:00 MT) Stories from the Stage

SDPB2

6:00 (5:00 MT) NOVA Bird Brain
7:00 (6:00 MT) NOVA Wonders What Are Animals Saying?
8:00 (7:00 MT) Turning the Tide
9:00 (8:00 MT) PBS NewsHour
10:00 (9:00 MT) Nightly Business Report
10:30 (9:30 MT) Scully: The World Show
11:00 (10:00 MT) NOVA Bird Brain
Midnight (11:00 MT) NOVA Wonders What Are Animals Saying?

FRIDAY – APRIL 27

SDPB1

6:00 (5:00 MT) PBS NewsHour
7:00 (6:00 MT) Washington Week
7:30 (6:30 MT) Market to Market
8:00 (7:00 MT) Live from Lincoln Center Leslie Odom Jr. in Concert
9:00 (8:00 MT) International Jazz Day from Cuba
10:00 (9:00 MT) In Principle
10:30 (9:30 MT) BBC World News
11:00 (10:00 MT) Amanpour on PBS
11:30 (10:30 MT) Dakota Life  *Sculpture, Archery, Schmeckfest and More*
Midnight (11:00 MT) Stories from the Stage


SDPB2

6:00 (5:00 MT) Jens Jensen The Living Green
7:00 (6:00 MT) America's First Forest
8:00 (7:00 MT) Civilizations
9:00 (8:00 MT) PBS NewsHour
10:00 (9:00 MT) Nightly Business Report
10:30 (9:30 MT) Asia Insight
11:00 (10:00 MT) Jens Jensen The Living Green
Midnight (11:00 MT) America's First Forest

SATURDAY – APRIL 28

SDPB1

6:00 (5:00 MT) The Lawrence Welk Show
7:00 (6:00 MT) Doc Martin
8:00 (7:00 MT) Keeping up Appearances
8:30 (7:30 MT) As Time Goes By

9:00 (8:00 MT) Father Brown
10:00 (9:00 MT) No Cover, No Minimum 
Burlap Wolf King
11:00 (10:00 MT) Austin City Limits TV on the Radio/The War on Drugs
Midnight (11:00 MT) Music Voyager Atlanta: Atlanta Canvas

SDPB2

Noon (11:00 MT) Independent Lens Seed: The Untold Story
1:00 (Noon MT) Jens Jensen The Living Green
2:00 (1:00 MT) America's First Forest
3:00 (2:00 MT) Civilizations
4:00 (3:00 MT) To the Contrary
4:30 (3:30 MT) Washington Week
5:00 (4:00 MT) PBS NewsHour Weekend
5:30 (4:30 MT) In Principle
6:00 (5:00 MT) Trust Docs
6:30 (5:30 MT) Poetry in America
7:00 (6:00 MT) Frederick Law Olmsted: Designing America
8:00 (7:00 MT) Olmsted and America's Urban Parks
9:00 (8:00 MT) America ReFramed Through the Repellent Fence
10:00 (9:00 MT) Lost Bird Project
11:00 (10:00 MT) Frederick Law Olmsted: Designing America
Midnight (11:00 MT) Olmsted and America's Urban Parks

SUNDAY – APRIL 29

SDPB1

Noon (11:00 MT) Native Report
12:30 (11:30 MT) MotorWeek
1:00 (Noon MT) South Dakota Focus 
Minority Business Successes
2:00 (1:00 MT) Masterpiece Downton Abbey, Season 2
4:00 (3:00 MT) Rick Steves' Europe
4:30 (3:30 MT) Samantha Brown's Places to Love
5:00 (4:00 MT) Antiques Roadshow Green Bay, Hour One
6:00 (5:00 MT) Midsomer Murders The Great and the Good
7:00 (6:00 MT) Call the Midwife
8:00 (7:00 MT) Masterpiece Unforgotten, Season 2
9:30 (8:30 MT) Last Tango in Halifax

10:30 (9:30 MT) Anne Morrow Lindbergh: You'll Have the Sky
11:00 (10:00 MT) Globe Trekker Tough Trains: Vietnam
Midnight (11:00 MT) Washington Week

SDPB2

Noon (11:00 MT) America's Heartland
12:30 (11:30 MT) Start Up
1:00 (Noon MT) To the Contrary
1:30 (12:30 MT) Washington Week
2:00 (1:00 MT) Open Mind
2:30 (1:30 MT) Great Performances at the Met
L'elisr D'Amore
5:00 (4:00 MT) PBS NewsHour Weekend
5:30 (4:30 MT) Dakota Life 
6:00 (5:00 MT) Migrant Kitchen Omotenashi
6:30 (5:30 MT) Migrant Kitchen Beyond Pho
7:00 (6:00 MT) Nature Natural Born Rebels
8:00 (7:00 MT) Reel South Honky Tonk Heaven
9:00 (8:00 MT) Crowd & The Cloud Viral vs. Virus
10:00 (9:00 MT) Crowd & The Cloud
Citizens4Earth
11:00 (10:00 MT) Nature Natural Born Rebels
Midnight (11:00 MT) Reel South Honky Tonk Heaven

MONDAY – APRIL 30

SDPB1

6:00 (5:00 MT) PBS NewsHour
7:00 (6:00 MT) Antiques Roadshow Green Bay, Hour Two
8:00 (7:00 MT) Antiques Roadshow Charleston, Hour Two
9:00 (8:00 MT) Independent Lens True Conviction
10:30 (9:30 MT) BBC World News
11:00 (10:00 MT) Amanpour on PBS
11:30 (10:30 MT) Beyond 100 Days
Midnight (11:00 MT) Stories from the Stage

SDPB2

6:00 (5:00 MT) Defining Hope
7:00 (6:00 MT) Pacific Heartbeat
8:00 (7:00 MT) Act of Dog
8:30 (7:30 MT) Stories from the Stage
9:00 (8:00 MT) PBS NewsHour
10:00 (9:00 MT) Nightly Business Report
10:30 (9:30 MT) To the Contrary
11:00 (10:00 MT) Defining Hope
Midnight (11:00 MT) Pacific Heartbeat



Photo: pbs.org

On Antiques Roadshow: Green Bay, specialists from the country's leading auction houses and independent dealers decamp to the Badger State to offer free appraisals of antiques and collectibles. Cameras capture tales of family heirlooms, flea market finds and items saved from attics and basements, while experts reveal the fascinating truths about these items.
SDPB1: Mondays, April 23 & 30, 7pm (6 MT)

South Dakota
**TURN IN
POACHERS**

TWO INDIVIDUALS CAUGHT IN THE BLACK HILLS WITH **113 TROUT OVER LIMIT**

Cash rewards may apply for arrest and conviction of violators.

**PROTECT YOUR FISH AND
WILDLIFE RESOURCES.
MAKE THE CALL.**

TIPS.SD.GOV | 1.888.OVERBAG

This number is for reporting wildlife law violations only. Operators are not equipped to handle information requests or to transfer calls.
Tax deductible donations accepted at Wildlife Protection, Inc., 523 E. Capitol Ave, Pierre, SD 57501.

(683-7224)



Talented South Dakota students take center-stage for the state Show Choir Competition.



South Dakota All-State Band Concert.



A show choir contestant hits a high note.

Music in the Air

Show Choir Competition

SDPB covers South Dakota high school stars as they strut and sing their best stuff vying for best ensembles and top show band during the state Show Choir competitions from the Mitchell High School Performing Arts Center April 7.

Watch SDPB Digital and Social Media for center-stage photos and red carpet results updated on SDPB's Twitter, Facebook and SDPB.org feeds at #SDShowChoir18

Dakota All-State Band Concert

Recorded live on March 24, 2018, at the Rushmore Plaza Civic Center Fine Arts Theatre, Rapid City. Catch the 68th annual concert.

SDPB1: Saturday, April 21, 8pm (7 MT)

Coverage of SDHSAA is sponsored by Dacotah Bank and SD Corn. Also by SDN Communications, Independent insurance Agents of South Dakota, SDSU and the SD Dept. of Education. And by Touchstone Energy, Sanford Health and Lake Area Tech. And by Delta Dental, Dakota Plain New Holland, Fischer Rounds, Farmers Union, Catholic United Financial and SD Ethanol.

Savor Dakota Desserts

SDPB hopes you saved room for dessert, as we wrap up the second season of **Savor Dakota**. Join MJ Adams as she visits food producers who help make life in South Dakota a little sweeter.

Lakota Honey Lodge on the Rosebud Reservation

At the Lakota Youth Development *wičoti tiwáhe* (family camp) programs at the Milks Community of the Rosebud Reservation, kids aged 10-18 learn Wolakota, or Lakota way of life skills, including traditional gathering and food preparation. When they faced a lack of funding, the LYD turned to social entrepreneurship and Honey Lodge was born, where youth raise and care for bees and produce and manufacture the 100% pure, raw honey. “We are just really committed to helping our youth,” says Marla Bull Bear, Executive Director of Lakota Youth Development. “We feel that we can make some substantial changes when we’re able to help youth create that foundation of self-identity, then helping them to figure out how they live that way in the world now.”

Homemade Cake from Keya Café in Eagle Butte

Savor Dakota showcases Keya (Turtle) Café. Owned and operated by the Cheyenne River Youth Project (CRYP), Keya Café serves food cultivated from the CYRP’s *Winyan Toka Win* (Leading Lady) Garden, a sustainable agriculture venture tended by youth and community workers. Keya Café specializes in breakfast, coffee, and homemade snacks like carrot cake and chocolate zucchini cake. “When we started the Keya Café, it made sense to take back our



Student workers collect honey at Honey Lodge on the Rosebud Reservation.



Tammy Eagle Hunter serves Keya Café’s signature chocolate zucchini cake.

food in that way too,” says Tammy Eagle Hunter who directs the youth program. I never heard of what farm-to-table was, I didn’t know that concept. It just made sense if we were going serve something, why would we pay those unaffordable prices that exist in our food desert when we could just grow it and use it ourselves?”

Flaxseed Chocolate Chip Cookies in Raymond

When Gene and Wanda Bethke experienced cholesterol issues, they decided it was time to reap what they sow. The Clark County farmers/ranchers added flaxseed to both their diets and their farm operation. “We started growing it, and just thinking of it as a value-added ag product that we could continue marketing for the farm,” says Wanda Bethke. “We started really slow. Our office was in a semi, and things grew.” Today as Purity Seeds, LLC, the couple grows and packages natural and organic flaxseed. ♡

Savor Dakota Desserts airs:

SDPB1: Thursday, April 5, 8:30pm (7:30 MT)
Friday, April 6, 11:30pm (10:30 MT)
Sunday, April 8, 1:30pm (12:30 MT)



MJ’s Apple Honey Cakes with Lakota Honey Lodge Honey

Cake:

- 1 ¼ c. flour
- 1 ¾ tsp. baking powder
- ¼ tsp. salt
- 1 tsp. cinnamon
- 1 c. peeled apple mixture
(¼ cup grated & ¾ cup diced)
- ½ c. butter (melted)
- ½ c. brown sugar
- ¼ c. honey
- 2 large eggs

- Preheat oven to 350 degrees.
- Mix dry ingredients in bowl. Stir in apple mixture.
- In separate bowl, add butter, sugar, honey & eggs. Mix well.
- Add wet ingredients to dry. Mix well.
- Grease & flour 6 count mini-bundt pan. Add mixture.
- Bake 18-20 minutes or until inserted toothpick comes out clean.
- Cool one minute and turn onto sheet pan.
- Cool completely. Drizzle with honey drizzle (below). Harden for 10 mins.

Apple Honey Cake Drizzle:

- 1 ½ c. sifted confectioners sugar
- 2 T. lemon juice
- 1 T. warm honey

- Place sugar in bowl. Add lemon juice and honey. Mix well.
- Set 1-2 minutes to thicken. Add additional lemon juice to thin, if necessary.

SDPB in the Community

Be it music, classic books or fun learning opportunities for kids, SDPB staff love meeting and greeting folks from throughout South Dakota's communities. Thanks for stopping by!



SDPB at USD's Frankenstein conference.



Conference visitors stop by the SDPB booth.



Les Singes Volants performs at the Black Hills Bureau.

Happy Birthday, Frankenstein!

In February, SDPB helped scholars and book lovers celebrate the 200th birthday of the publication of *Frankenstein* at the Frankenstein 200! Symposium at the University of South Dakota in Vermillion. Conference goers learned about **The Great American Read**, PBS's upcoming series and vote to select America's favorite book and the Spring 2018 premiere of **Masterpiece: Little Women**. Conference organizers and USD English professors Lisa Ann Robertson and Heather Love discussed the enduring quality and influence of Mary Shelley's groundbreaking novel on **In the Moment with Lori Walsh**, as did keynote speaker Joel Pace.



Buddy is ready to start the summer!



Thank you Strider Bikes!

Love a Lever in Rapid City

Learn all about levers, make your own catapult, and sign up to win one of three Strider Bikes to be given away at SDPB's booth at the Youth & Family Services Kids Fair April 27-29 at the Rushmore Plaza Civic Center in Rapid City. We'd love to see you there!

SDPB Community Calendar

Have a kids, arts, music or education event to share? Be sure to get it on everyone's radar and list it on SDPB's Community Calendar at SDPB.org/community-calendar.



Visit Buddy & SDPB in Rapid City at the Youth & Family Services Kids Fair, April 27-29.

| RADIO | WEEKDAYS | SATURDAYS | SUNDAYS | |
|---------------|--|--|---|---|
| 5am / 4 MT | Morning Edition News and more from NPR's Steve Inskeep, Rachel Martin & David Greene and SDPB's Gary Ellenbolt. | BBC World Service Overnight. | BBC World Service Overnight. | |
| 5:30/4:30 MT | | The People's Pharmacy Health news & alternatives. | TED Radio Hour Ideas, inventions and original thinking. | |
| 6am / 5 MT | | Weekend Edition News and features from NPR. | Weekend Edition News and features from NPR. | |
| 6:30/5:30 MT | | | | |
| 7am / 6 MT | | On Point Lively conversations about issues and the arts. | Wait, Wait ... Don't Tell Me! Trivia, humor from week's news. | On Being with Krista Tippett Philosophical discussions. |
| 7:30/6:30 MT | | | This American Life Portraits of all kinds of Americans. | Travel with Rick Steves America's top travel expert. |
| 8am / 7 MT | | | Radiolab Science and life. | Milk Street Kitchen Recipes, tips, and information. |
| 8:30/7:30 MT | | Here & Now News, features, conversations and more from NPR. | TED Radio Hour Ideas, inventions and original thinking. | Live from Here Music, humor, skits and more with Chris Thile. |
| 9am / 8 MT | Ask Me Another Test your wits in this lively quiz show. | | | |
| 9:30/8:30 MT | In the Moment with Lori Walsh ▼ SDPB's daily news & culture magazine program. Tech Radio & Innovation on Fridays. | Only a Game Sports & competition in U.S. culture. | Wait, Wait ... Don't Tell Me! Trivia, humor from week's news. | |
| 10am / 9 MT | | All Things Considered NPR | On the Media News analysis and journalistic journeys. | |
| 10:30/9:30 MT | National Native News 4:30 (3:30 MT) | The Show with Chris Thile Music, humor, skits and more with Chris Thile. | All Things Considered NPR | |
| 11am / 10 MT | | American Routes Roots music, stories behind sounds & artists. | Fresh Air Weekend Best features from the week. | |
| 12:30/11:30MT | Marketplace | No Cover, No Minimum Radio ▼ South Dakota performance. | Radiolab Weaves stories and science into documentaries. | |
| Noon / 11 MT | | On Record with Matt Weesner ▼ Adult alternative music. | This American Life Portraits of all kinds of Americans. | |
| 12:30/11:30MT | Fresh Air with Terry Gross Celeb & newsmaker interviews. | On Record with Matt Weesner ▼ Adult alternative music. | The Moth Radio Hour Compelling real-life stories. | |
| 1pm / Noon MT | | | BBC World Service Overnight. | Big Band Spotlight with Karl Gehrke ▼ Music of '30s & '40s. |
| 1:30/12:30 MT | Jazz Nightly with Karl Gehrke ▼ Karl features jazz artists & styles, as well as South Dakota Jazz Stars. | BBC World Service Overnight. | Jazz Nightly Extra ▼ More jazz from SDPB's vast library. | |
| 2pm / 1 MT | | | BBC World Service Overnight. | No Cover, No Minimum Radio ▼ South Dakota performance. |
| 2:30/1:30 MT | World Café Music from around the globe. | BBC World Service Overnight. | BBC World Service Overnight. | |
| 3pm / 2 MT | | | BBC World Service Overnight. | |
| 3:30/2:30 MT | Science Friday on Fridays. | BBC World Service Overnight. | BBC World Service Overnight. | |
| 4pm / 3 MT | | | BBC World Service Overnight. | |
| 4:30/3:30 MT | All Things Considered News, interviews & features with NPR's Audie Cornish, Ari Shapiro & Kelly McEvers. | BBC World Service Overnight. | BBC World Service Overnight. | |
| 5pm / 4 MT | | | BBC World Service Overnight. | |
| 5:30/4:30 MT | National Native News 4:30 (3:30 MT) | BBC World Service Overnight. | BBC World Service Overnight. | |
| 6pm / 5 MT | | | BBC World Service Overnight. | |
| 6:30/5:30 MT | Marketplace | BBC World Service Overnight. | BBC World Service Overnight. | |
| 7pm / 6 MT | | | BBC World Service Overnight. | |
| 7:30/6:30 MT | Fresh Air with Terry Gross Celeb & newsmaker interviews. | BBC World Service Overnight. | BBC World Service Overnight. | |
| 8pm / 7 MT | | | BBC World Service Overnight. | |
| 8:30/7:30 MT | Jazz Nightly with Karl Gehrke ▼ Karl features jazz artists & styles, as well as South Dakota Jazz Stars. | BBC World Service Overnight. | BBC World Service Overnight. | |
| 9pm / 8 MT | | | BBC World Service Overnight. | |
| 9:30/8:30 MT | World Café Music from around the globe. | BBC World Service Overnight. | BBC World Service Overnight. | |
| 10pm / 9 MT | | | BBC World Service Overnight. | |
| 10:30/9:30 MT | World Café Music from around the globe. | BBC World Service Overnight. | BBC World Service Overnight. | |
| 11pm / 10 MT | | | BBC World Service Overnight. | |
| 11:30/10:30MT | World Café Music from around the globe. | BBC World Service Overnight. | BBC World Service Overnight. | |
| Mid. / 11 MT | | | BBC World Service Overnight. | |
| 12:30/11:30MT | World Café Music from around the globe. | BBC World Service Overnight. | BBC World Service Overnight. | |
| 1am / Mid. MT | | | BBC World Service Overnight. | |

A Sound Vision: SDPB's Sioux Falls Studios

SDPB is thrilled to announce the opening of the Sioux Falls Studios this summer.

SDPB's Sioux Falls Studios are located in the Phillips Avenue Loft Building at 601 N. Phillips Avenue in uptown Sioux Falls. Like the recently opened Black Hills Bureau in Rapid City, the studios will serve as a meeting space for community members, news reporters, and news makers that will strengthen connections between the communities SDPB serves. The new studios, situated across from the planned Levitt Shell, will feature live broadcasts and studio audiences for **In the Moment with Lori Walsh** as well as **Jazz Nightly with Karl Gehrke**.

To be a part of the Sioux Falls Studios fundraising campaign, including naming opportunities, contact Friends of South Dakota Public Broadcasting at 800-333-0789.

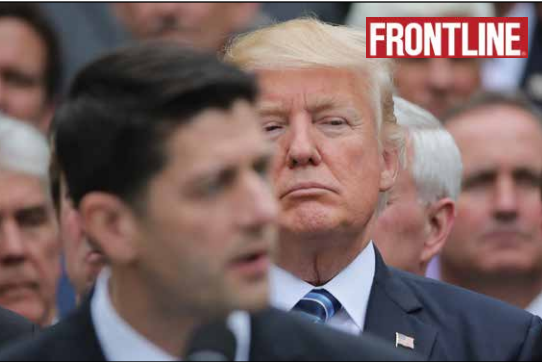


Photo of the exterior of SDPB Sioux Falls Studios.

Frontline in April

Experience powerful investigative storytelling that answers only to you.

PBS's flagship public affairs series has won 75 Emmy awards and 18 Peabody awards since its debut in 1983.



Trump's Takeover

FRONTLINE goes inside President Trump's high-stakes battle for control of the GOP, examining how he attacked fellow Republicans and used inflammatory rhetoric that rallied his base and further divided the country in his first year as president.

SDPB1: Tuesday, April 10, 9pm (8 MT)

SDPB2: Wednesday, April 11, 8pm (7 MT)

McCain

This riveting episode examines Arizona Senator John McCain's complicated relationship with President Trump and his own Republican party, and looks at McCain's life and politics, his time as a POW in Vietnam, to choosing Sarah Palin as presidential running mate, to his dramatic vote against the GOP's health care bill.

SDPB1: Tuesday, April 17, 9pm (8 MT)

SDPB2: Wednesday, April 18, 8pm (7 MT)

Trafficked in America

The inside story of Guatemalan teens forced to work against their will in Ohio. An investigation of labor trafficking exposes a criminal network that exploits undocumented minors, companies profiting from forced labor, and the United States government's role.

SDPB1: Tuesday, April 24, 9pm (8 MT)

SDPB2: Wednesday, April 25, 8pm (7 MT)



Michael Gerson and Amy Holmes co-host *In Principle*.

In Principle

PBS Premieres Conservative-Oriented Talk Show

In Principle, a new primetime public affairs show, debuts this month on SDPB. The half-hour program features co-hosts Michael Gerson and Amy Holmes. Gerson is a frequent contributor to **PBS NewsHour**, a syndicated *Washington Post* columnist, and author of the book *Heroic Conservatism*. Holmes is a political news commentator formerly of MSNBC and TheBlaze TV and Radio Network.

The series, which has been in development for several months, will include guests from across the ideological spectrum in the worlds of politics, policy, the arts, and academia, with Holmes and Gerson probing the framework of today's news and political conversations, examining how history, faith and culture influence the larger discussions taking place in the country today.

"This is a time when big, fundamental issues — about identity, about citizenship, about how we define our country — are being debated in American life," said

Gerson. "We need serious dialogue that stands in contrast to the degraded discourse so common in American politics right now. On

In Principle, we intend to engage newsmakers and culture shapers at a deeper level, exploring their beliefs and motivations in a way viewers might not get in other formats on television. **In Principle** is going to be honest, reflective, deep-dive TV."

"We need a place where we can have thoughtful, reasonable, in-depth conversations about politics, policy, culture — you name it — where we're really talking to each other instead of shouting at each other," said Holmes. "It's not about shouting, it's about talking and listening and learning — I want our viewers to feel it was always time well spent. That they come away saying, 'I learned something that I didn't know before.'"

In Principle airs Fridays at 10pm (9 MT) on SDPB1 beginning April 13 and Saturdays at 5:30pm (4:30 MT) on SDPB2.

Where Do We Go from Here?



SDPB's Discussion Series Explores Community Solutions

Lend your voice and ideas to conversations on issues of local and national concern. Moderated by Chuck Parkinson.

WHAT: Black Hills Resources: Addressing Economic Viability & Environmental Integrity

WHEN: Wednesday, April 18, Noon

WHO: Free & open to the public.

WHERE: SDPB Black Hills Bureau, 415 Main St., Rapid City.

Big Night: The Moth in Sioux Falls

For the first time, the popular storytelling project **The Moth** is coming to Sioux Falls' Orpheum Theater, Thursday, April 12.

Tune in to SDPB Radio April 2-13 and you could receive free tickets to this renowned show!

The Moth is true stories, told live. Since its launch in 1997, The Moth has presented thousands of stories told in-person and without notes.

Additionally, The Moth runs storytelling workshops for high school students and adults in underserved communities through their Education and Community Programs.

The Moth podcast is downloaded over 44 million times a year. The Peabody Award-winning **The Moth Radio Hour**, produced by Jay Allison (featured on *This American Life*, *Morning Edition* and *All Things Considered*), is heard on over 450 radio stations worldwide, including SDPB Radio.

The Moth's first book, *The Moth: 50 True Stories* (Hachette) was an



Photo: Allison Evans

international bestseller and its latest book *All These Wonders: True Stories about Facing the Unknown from The Moth* (Crown) features a forward from Neil Gaiman and stories from new and familiar voices like Tig Notaro, Meg Wolitzer, and John Turturro.

The Moth Radio Hour airs Sundays at 6pm (5 MT) on SDPB Radio.

Tickets to **Big Night: The Moth in Sioux Falls** are available at SDPB.org/Moth

(We Don't Interrupt, continued from page 3)

time to speak and listeners time to process.

For example, after the Parkland, Florida school shooting, Sioux Falls school principals Tim Hazlett and Twain Fink and Captain Jason Gearman, who served on the SWAT team that responded to the 2015 Harrisburg school shooting, came on **In the Moment** to discuss school safety and culture that works. Lori Walsh asked questions as a parent of a high schooler and as a journalist. We want to drive useful conversations from multiple perspectives that build, not diminish, community.

Whether it's business innovation and entrepreneurship, arts and education, or legislative coverage, SDPB maintains a sane space where South Dakotans can listen and be heard that goes beyond soundbites and offers real consideration of the issues at hand, as they affect South

Dakotans.

KB: You host SDPB's Innovation. You've mapped programming changes. I'm sensing a theme.

CH: "Without the encouragement from listeners I wouldn't want to try new things. Every change, every new hire, every goal we make it's because people support SDPB and what we do. It warms my heart to give back a little and not interrupt programming for a member drive. This is it. We're asking, and we hope people respond."



If you like what you hear (and don't hear) on SDPB Radio, here's how to give. Encourage a friend! Each gift is tax-deductible. Choose a thank you gift, but most importantly – support South Dakota's only public broadcasting station.

Phone: 800-333-0789

Text: "SDPB" to 797979

Online: SDPB.org/donate

Thank You for Your Gifts
SDPB members make programming possible.

Friends of SDPB has received the following gifts:

In honor of their granddaughters Solvei Knutsen-Larson & Annika Knutsen-Larson, Roger & Janice Knutsen provided a gift in support of the SDPB Kids Channel.

In honor of Buck Trumble's birthday, SDPB received a gift from Evelyn Straight, Rapid City.

In memory of Sheila Clink, Sioux Falls, SDPB was provided gifts from the family of Sheila Clink and L. S., Lyon, Sioux Falls.

In memory of Paul Otto, Henry Haman, Robert O'Day, and Bill Thompson, SDPB received a gift from Daryl & Vonnie Cole of Ft. Pierre.



New Visionary Society Members
Tower Club

(\$5,000 to \$9,999)

Tom & Danielle Aman Foundation, Aberdeen

Bill & Rosemary Draeger, Sioux Falls

Sue W. White & Larry M. Landis, Spearfish, SD

Spotlight Club

(\$2,500 to \$4,999)

L. B. Lane Family Foundation, Rapid City

Gifts and memorials are a wonderful way to honor loved ones while supporting SDPB, which provides lifelong learning to South Dakotans of all ages.

To learn how you can provide a gift, please call Friends of South Dakota Public Broadcasting at 800-333-0789 or visit SDPB.org and click on "Support SDPB."

And thank you.



Corporate Support *Our corporate partners continue to support the excellent Television and Radio programming you have come to expect and love from SDPB.*

| | | | | |
|--|--|--|--|--|
| 3M Aberdeen | Deadwood History (Adams Museum & House/Days of '76/Adams Research & Cultural Center) | Ingalls Homestead InsideOut | Rapid City First United Methodist Church | South Dakota Humanities Council |
| 3M Brookings | Dell Rapids Chamber of Commerce | Jade Presents, LLC | Rapid City Medical Center | South Dakota Quilters Guild |
| Aberdeen Parks, Recreation & Forestry Department | Delta Dental of South Dakota | James Leach, Attorney at Law | Regional Health | South Dakota Space Grant Consortium |
| Abourezk Law Firm | Delta Dental of South Dakota Foundation | Jim Szana Trio | Regional Health Dermatology | South Dakota State Historical Society |
| Acupuncture 4 Health | DeMersseman, Jensen, Tellinghuisen & Huffman, LLP | Jolly Lane Greenhouse | Reptile Gardens | South Dakota State University |
| All Souls Church | Emmanuel Episcopal Church | Lake Area Technical Institute | Rocklands Entertainment | South Dakota Symphony Orchestra |
| Arts South Dakota | Estes Campbell Law | Laura Ingalls Wilder Pageant Society | Sanford Health | Southeastern Dental Center – Dr. Daniel Goede |
| BankWest | Exceptional Artists | Madison Farmers Elevator | Sassycat Quilting Company | Sunset Strip Pawn, Inc. |
| Black Forest Inn | Family Dentistry of Sioux Falls | Mahlander's | Schmeckfest | Termosphere Gallery |
| Black Hills Energy | Farmers Union Insurance Companies | McCrory Gardens | Scull Construction Service, Inc. | The Center for Western Studies |
| Black Hills Federal Credit Union | First Bank and Trust | Media One Advertising | SDN Communications | The Dutch Rose Quilting Shop |
| Black Hills Film Festival | First Dakota National Bank | Mills Entertainment | Sheraton Sioux Falls & Convention Center | The Journey Museum & Learning Center |
| Black Hills Playhouse | Fischer, Rounds & Associates | Missouri River Energy Services | Sioux Falls Area Community Foundation | The Market |
| Black Hills Quilters Guild | Flooring America | Murdo Dental – Dr. Aaron Rumpca | Sioux Falls Community Theatre | The Sewing Center/Fabric City |
| Black Hills State University | Four Bands Community Fund | North County Fiber Fair | Sioux Falls Seminary | Tony Diem – World Bicycle Relief/ Twin City Animal Shelter |
| Black Hills Symphony | Four Seasons Fabric | Northern Plains Indian Art Market | Siouxland Heritage Museums | Touchstone Energy Cooperative |
| Bursch Travel | Freedom Forum | Northern State University – Fine Arts | South Dakota Affiliate of the American College of Nurse Midwives | Turbak Law Office, PC |
| Bush Foundation | Freeman Academy | NorthWestern Energy | South Dakota Agricultural Heritage Museum | University of South Dakota |
| Capital Services | Friends of Aberdeen University/ Civic Symphony | Orlando Chamber Soloists/Chamber | South Dakota Art Museum | University of South Dakota – School of Health Science |
| Catholic United Financial | Gene Hufford Agency, Inc. | Music Festival of the Black Hills | South Dakota Bar Foundation | Vance Thompson Vision |
| SFM Mutual Insurance | Good Earth Natural Foods | Orpheum Theatre | South Dakota Community Foundation | Viken & Riggins Law Firm |
| Chet Groseclose, Prof. LLC | GoodSpirits | Pathway Investment | South Dakota Corn | Washington Pavilion |
| Children's Museum of South Dakota | Google | Paul Horsted, Dakota Photographic, LLC | South Dakota Department of Education | Wild Deadwood Reads |
| Cody Yellowstone (Park County Travel Council) | Great Plains Zoo & Delbridge Museum | Perfect Hanging Gallery | South Dakota Ethanol Producers Association | Wildlife Protection, Inc. |
| CO-OP Architecture | Hands Around the World | Performing Arts Center of Rapid City/Black Hills Community Theatre | South Dakota Hall of Fame | Westhills Village Retirement Community |
| Dacotah Bank | Hill City Arts Council | Prairie Repertory Theatre | | Yak Ridge Cabins & Farmstead |
| Dakota Plains New Holland | Horton Incorporated | Presentation Sisters of Aberdeen | | Xcel Energy |
| Dakota State University | Hy-Vee Food Stores | Rapid City Arts Council | | |
| Davenport Evans Lawyers | Independent Insurance Agents of SD | | | |

Join us in telling South Dakota's stories.

Be an underwriter.

Contact the Corporate Development Manager nearest you.

| | |
|--|---|
| <p>Michele Slott, West River 800-456-1266</p> | <p>Liz Larkin, East River 800-456-0556</p> |
|--|---|



Volume 49 No. 4

Friends of SDPB Office
PO Box 5000
Brookings, SD 57006
(605) 688-4191 or (800) 333-0789

Ryan Howlett, Friends CEO
(800) 456-0556

SDPB Administrative Office
PO Box 5000
Vermillion, SD 57069
(605) 677-5861 or (800) 456-0766

SDPB Home Page
<http://www.SDPB.org>
press@SDPB.org

SDPB Magazine & Promotion Staff
Katy Beem, Editor
Matti Smith, Marketing Manager
Amber Anders, Continuity Director
Dave Foote, Promotion Producer
Heather Benson, Social Media
Kara Brodsky, Intern
Krystal Schoenbauer, Intern

Friends of SDPB Board
President Janelle Krause Toman, Pierre
Vice President Prof. Tim Schorn, Vermillion
Tom Manzer, Treasurer, Brookings
Greg Blomberg, Secretary, Sioux Falls
Wayne Carney, Fort Pierre
Gene Ellenson, Huron
Sue Gates, Aberdeen
Michael Goodroad, Lead
Thomas E. Graslie, Rapid City
Rebecca Jirava, Brookings
Lizabeth Manning, Spearfish
Katrina Lehr-McKinney, Sioux Falls
Karen Mortimer, Rapid City
Tamara Pier, Rapid City
Katrin Profflet, Sioux Falls
Ron Roehr, Milbank
John Charles Sternquist, Yankton
Lon E. Stroshein, Sioux Falls

South Dakota Educational Telecommunications Board
Mark Shlanta, Chair, Sioux Falls
Doyle Estes, Hill City
Kay Jorgensen, Spearfish
Julie Mathiesen, Sturgis
Michael G. Rush, Regents, Pierre
Julie Overgaard, SDPB, Vermillion
David Zolnowsky, BIT, Pierre

SDPB Management Team
Julie Overgaard, Executive Director
Larry Rohrer, Director of Content
SeVern Ashes, Engineering Director
Bob Bosse, Television Director
Cara Hetland, Radio Director
Fritz Miller, Marketing Director
Kent Osborne, Digital Director

– South Dakota Public Broadcasting is a division of the South Dakota Bureau of Information and Telecommunications.
– Friends of SDPB is a 501(c)3 organization.
– SDPB Magazine is printed by Midstates Printing, Aberdeen, SD. Approximately 14,500 copies of the document were printed at an approximate cost of \$.36 per copy. SDPB Magazine (ISSN 1529-1596) is published and mailed monthly for \$10 per year for Friends of SDPB, 418 4th Street, Brookings, SD 57006. Periodical postage paid at Brookings, SD, and additional mailing offices.

Postmaster: Send address changes to Friends of SDPB, Box 5000, Brookings, SD 57006. USPS 0764-400



South Dakota

STATE

Arts

CONFERENCE

May 4-5 2018

DOWNTOWN SIOUX FALLS



RANDY COHEN

Vice President
Research and Policy
Americans for the Arts



JANE CHU

Chairman
National Endowment
for the Arts

**FRIDAY & SATURDAY
MAY 4-5**

In collaboration with the
SculptureWalk Sioux Falls opening weekend

KEYNOTE SPEAKERS:

Friday, May 4th: *Randy Cohen*
Saturday, May 5th: *Jane Chu*

OTHER PRESENTERS:

Janet Brown "Arts For A Changing Time"
Brian Bonde "Nuts and Bolts of Fundraising"
Dr. Craig Howe "Native Land/Native Presence"
Dale Lamphere "Major Projects"
Zach DeBoer "Artists as Entrepreneurs"
and many more!

create • advocate • connect • develop

Open to everyone including artists,
arts organizations, local arts councils,
educators, individuals, businesses and
city leaders looking to focus and enhance
fundraising, advocacy, racial equity,
arts education, grant-writing, business for
artists and social media training.

REGISTRATION

**MAY 4 PRE-CONFERENCE &
FRIDAY NIGHT KEYNOTE ONLY**

\$75 Arts South Dakota donors & member orgs
\$90 non-members/donors

FULL CONFERENCE

\$125 Arts South Dakota donors & member orgs
\$140 non-members/donors

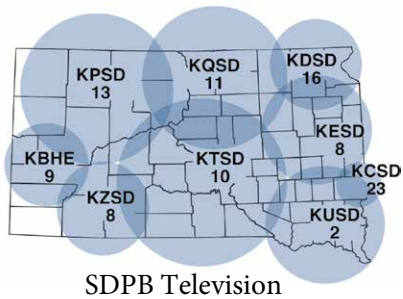


For complete conference information & to register:

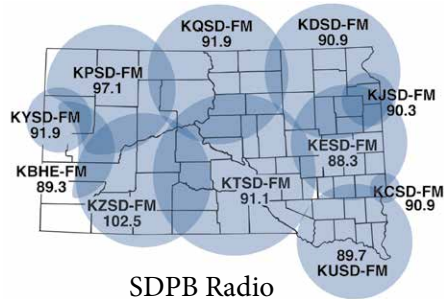
www.ArtsSouthDakota.org

PO Box 2496 • Sioux Falls, SD 57101





SDPB Television



SDPB Radio

Live and on-demand audio and video at SDPB.org



The number on the top of your address is your membership expiration date. The number on the left is your identification. Please use for membership renewals. This will reduce our processing time and speed up your service.

Printed on Recycled Paper



Poplar welcomes Lucille Anderson, the first West Indian midwife to be featured as a series regular on Season 7 of **Call the Midwife**. Tested as never before, the nuns and nurses face challenging childbearing issues, from leprosy, tokophobia and stroke to Huntington's chorea and unmarried mothers. See why viewers love this spirited series.

SDPB1: Sundays at 7pm (6 MT)

Photos: Neal Street Productions