



SDPB

Magazine

February 2015

Temples of Justice

The colorful stories behind
South Dakota's County Courthouses

Get ready to get *fit*!

Through *fit*, you can access and experience a suite of resources for parents and kids, all designed to help families make *fit* choices and stay healthy.

For parents

The Sanford *fit*/WebMD website gives parents the tools and resources they need to become healthy role models. Log on to explore healthy recipes, *fit* family challenges and connect with a community of parents and experts for support. Go to webmd.com/parenting/raising-fit-kids.

For kids

The website also offers an experience just for kids. Let them log on and discover entertaining and educational games, videos and challenges. No matter their age, the site has something for all kids to help them make *fit* choices every day and stay *fit* for life. Go to fit.sanfordhealth.org.

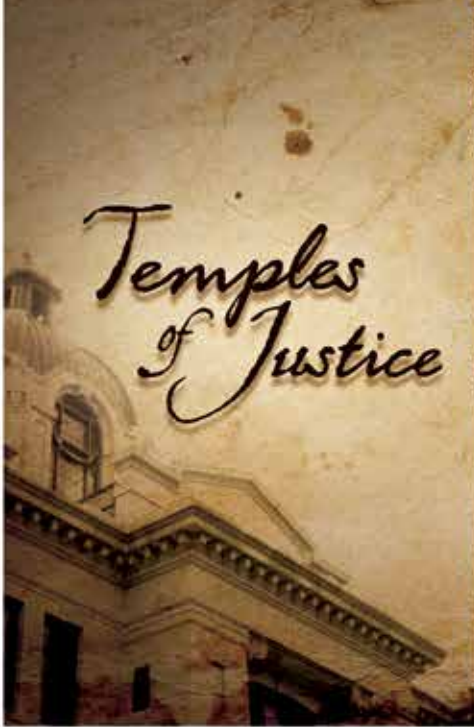
On the go

Take *fit* with you wherever you go! Though a series of free and engaging apps, you are never far away from *fit* activities. MOVE2Draw connects fun, friends and *fit* and is a simple and interactive way for kids to move and create their own unique drawings. eMOODicam helps not only capture the moment but also the emotion by allowing kids to bring their feelings to life and share with their friends in an easy-to-use app. Download in your app store today!



Visit us at sanfordhealth.org,
Keyword: *fit*





Stained glass, brass fixtures, elaborately sculpted plaster and marble gild the Codrington County Courthouse in Watertown.



Decorative murals and vintage wooden chairs grace a hallway in the Brookings County Courthouse.



Dignified steps and soaring columns lead the way into the Pennington County Courthouse in Rapid City.

State's Colorful Past Comes to Life in New Documentary

It's a tale of scalawags and scoundrels; history and mystery.

Temples of Justice explores the rich history of South Dakota's county courthouses.

The new one-hour production premieres in February.

Join us in Pierre on Tuesday, Feb. 17, from 5 to 7pm at the Capitol Lake Visitor Center, just east of the Capitol, to get a first glimpse of this new program.

Tune in to SDPB1 Television on Thursday, Feb. 26, at 8pm (7 MT) as the program premieres on air statewide.

Temples of Justice visits 45 courthouses in South Dakota and tells the colorful stories of several. You'll find out how swindlers changed history, where there's a

bullet hole in a judge's chambers, what cowboys did with their hats and which courthouses helped South Dakotans survive the Great Depression as WPA projects.

The free premiere party will include light refreshments and talks by South Dakota Supreme Court Chief Justice David Gilbertson, and State Sen. Art Rusch, author of "County Capitols: The Courthouses of South Dakota." Rusch served as an expert for the program.

Temples of Justice is a production of SDPB Television. Producer is Stephanie Rissler. Narrator is Brian Gevik. The production is supported by a grant from the South Dakota Humanities Council.

On the cover: A eagle watches over the Moody County Courthouse in Flandreau.



The stunning stone exterior of the Fall River Courthouse in Hot Springs features arched windows and carved pillars.



(Left) Statehouse Producer Stephanie Rissler and SDPB Radio News Director Cara Hetland guide the direction of Statehouse coverage.
(Above) Josh Kappler records the action in the State Legislature.



STATEHOUSE

SDPB Works Hard to Open the Door to the Capitol

Every year, SDPB invites listeners, viewers and online users to “tune into democracy” via our **Statehouse** coverage. SDPB offers the state’s most comprehensive coverage of the South Dakota Legislature. It’s a complicated task to provide online, television and radio coverage over the course of nine weeks.

“It’s our mission to educate South Dakotans on what’s happening with their Statehouse,” says Stephanie Rissler. The 18-year veteran of SDPB Television is the face of SDPB’s television coverage. Rissler is the Producer of SDPB Television’s **Statehouse** coverage, as well as Host for the weekly one-hour **Statehouse** wrap-up program on SDPB 1 Television.

“Our coverage is a true service to all of South Dakota,” says Director of Radio Joe Tlustos. “It’s available, for free, not only to citizens, but also to radio and TV stations and newspapers across the state.”

That’s important, because SDPB is

the only media in the state that covers the legislature every hour of every day.

“Reporters across South Dakota can cover critical debate on local issues from their desks,” says SDPB News Director Cara Hetland. “We even offer local media our finished news stories – edited and fact-checked. They are used on stations throughout the state.”

Adds Tlustos: “If we weren’t doing it, it probably wouldn’t be done.”

Inside Statehouse

Here’s a glimpse of what it takes to bring you the state’s best coverage of the South Dakota Legislature.

The **Statehouse** crew that travels to Pierre started out 16 strong this year – on-air talent, camera operators, engineers, audio editors, directors, producers – for inaugural events (Jan. 10) and the State of the State (Jan 13).

Statehouse coverage began in earnest with the Governor’s State of the State Address. Radio’s **Dakota MIDDAY**, broadcasting live from Pierre that entire week, interviewed

leaders, and previewed hot issues and topics. Rissler and Hetland hosted address coverage, and talked to legislators and officials to get reactions after the speech. Online staff made sure the speech was available live, and archived for on-demand viewing.

Once the session got under way, a reporter and two camera operators remained in Pierre – with a support crew of reporters, engineers, supervisors and operations crew across the state.

A typical day for **Statehouse** starts the night before a legislative day, as Rissler and Hetland study the meeting schedule for the next day. Rissler decides which parts of up to 10 committee meetings will be recorded by the cameras, and Hetland assigns up to six different radio staff to “virtually” cover meetings and hearings.

“We use the same SDPB Online-produced resources as the public,” Tlustos points out. Because all committee meetings and floor sessions are offered live and archived online, “We can cover hearings



and meetings from a desktop in Vermillion, Webster, Rapid City, wherever.”

“We look at the bigger issues,” Hetland says. Then reporters go beyond the legislative action to talk to individual lawmakers, talk to the people who will be affected, find out what the people at home are saying. “We offer stories that are balanced, with all sides of the issues.”

Pierre-based Jackelyn Severin, a prize-winning radio reporter, wears many hats at **Statehouse** – reporter, news producer, facilitator, tech assistant and more – starting each day around 7am. She might be assigned to produce and post a radio story, access resources for other news producers, track down officials for interviews, and provide suggestions for news stories. She even assists Online and Engineering, making sure audio equipment is turned on in committee rooms.

Meanwhile, SDPB videographers in Pierre start the day early, as well, making sure everything is in place for 7:45am committee meetings. Back in Vermillion, Online staff makes sure live audio of up to 10 committee meetings is available world-wide at SDPB.org.

Radio’s **Morning Edition** puts decisions in context from the previous day, and previews today’s top stories. At the same time, Radio Host Karl Gehrke prepares for conversations with top newsmakers on **Dakota Midday**. Often, his guests speak from the cramped SDPB studio, long ago nicknamed “The Cave,” located

(continued on page 17)



View of the South Dakota House Chamber.



Engineer Steve Munsen and SDPB Radio’s Dakota Midday Host Karl Gehrke prepare to broadcast live from the Capitol.

SDPB-TV Daytime Programming

Primetime listings on pages 8-15

SDPB1	WEEKDAYS	SATURDAYS	SUNDAYS
5am / 4 MT	Newsline	Knitting Daily	Dakota Life ▼
5:30/4:30 MT	Yoga	Dakota Life ▼	Zooboomafoo
6am / 5 MT	BBC World News	Barney & Friends	Curious George
6:30/5:30 MT	Caillou	Angelina Ballerina	Curious George
7am / 6 MT	Curious George	Curious George	Daniel Tiger's Neighborhood
7:30/6:30 MT	Curious George	Curious George	Daniel Tiger's Neighborhood
8am / 7 MT	Daniel Tiger's Neighborhood	Daniel Tiger's Neighborhood	Sesame Street Shorts
8:30/7:30 MT	Daniel Tiger's Neighborhood	Daniel Tiger's Neighborhood	Super Why!
9am / 8 MT	Clifford the Big Red Dog	WordWorld	Dinosaur Train
9:30/8:30 MT	Thomas & Friends	Bob the Builder	WordGirl
10am / 9 MT	Dinosaur Train	It's Sew Easy	Cat in the Hat Knows a Lot about That
10:30/9:30 MT	Dinosaur Train	Fons & Porter's Love of Quilting	Religion & Ethics Newsweekly
11am / 10 MT	Peg + Cat	Quilt in a Day	McLaughlin Group
11:30/10:30MT	Sid the Science Kid	Sewing with Nancy	Market to Market
Noon / 11 MT	Sesame Street	Quilting Arts	Feel Grand with Jane Seymour
12:30/11:30MT		Rough Cut – Woodworking	Motorweek
1pm / Noon MT	Sesame Street Shorts	Woodsmith Shop	Repeat of previous Thursday 8pm (7 MT)
1:30/12:30 MT	Cat in the Hat Knows a Lot about That	This Old House Hour	
2pm / 1 MT	Curious George		Statehouse ▼
2:30/1:30 MT	Educational programming	Martha Stewart's Cooking School	
3pm / 2 MT	Arthur	America's Test Kitchen	Documentary
3:30/2:30MT	Odd Squad	The Victory Garden's Edible Feast	
4pm / 3 MT	Wild Kratts	Prairie Yard & Garden	Rick Steves' Europe
4:30 / 3:30 MT	Cyberchase	America's Heartland	Nature Adventures ▼
5pm / 4 MT	Martha Speaks		Antiques Roadshow
5:30 / 4:30 MT	Nightly Business Report	Classic Gospel	

SDPB2	MONDAYS	TUESDAYS	WEDNESDAYS	THURSDAYS	FRIDAYS	SATURDAYS	SUNDAYS
5am / 4 MT	Newsline	Newsline	Newsline	Newsline	Newsline	Religion & Ethics	To the Contrary
5:30/4:30 MT	Tavis Smiley	Tavis Smiley	Tavis Smiley	Tavis Smiley	Tavis Smiley	Wealthtrack	Washington Week
6am / 5 MT	Washington Week	Global 3000	To the Contrary	Scully/World Show	Well Read	To the Contrary	McLaughlin Group
6:30/5:30 MT	Religion & Ethics	Focus on Europe	Wealthtrack	Second Opinion	Closer to Truth	McLaughlin Group	Charlie Rose
7am / 6 MT			America Reframed followed by documentary, news, science, nature & repeats of previous day's SDPB2 primetime programming		Documentary, news, science, nature & repeats of previous day's SDPB2 primetime.		Focus on Europe
7:30/6:30 MT							Global 3000
8am / 7 MT							America Reframed followed by documentary, news, science, nature
8:30/7:30 MT							
9am / 8 MT							
9:30/8:30 MT							
10am / 9 MT							
10:30/9:30 MT							
11am / 10 MT							
11:30/10:30MT	On Call ▼	Tavis Smiley	SD Focus ▼ Feb. 4, 18 & 25	Tavis Smiley	Amer. by Numbers		
Noon / 11 MT	Washington Week	Global 3000	To the Contrary	Scully/World Show	Well Read		
12:30/11:30MT	Religion & Ethics	Focus on Europe	Wealthtrack	Second Opinion	Closer to Truth		
1pm / Noon MT	Documentary, news	Documentary, news	Documentary, news	Local docs ▼	Statehouse House ▼ & Statehouse Senate ▼	History, Documentary & repeats of top programming from previous week	
1:30/12:30 MT	Local docs ▼	Local docs ▼	Local docs ▼	Local docs ▼	Statehouse House ▼ & Statehouse Senate ▼		
2pm / 1 MT	Statehouse House ▼ & Statehouse Senate ▼ (2/9)	Statehouse House ▼ & Statehouse Senate ▼	Statehouse House ▼ & Statehouse Senate ▼	Statehouse House ▼ & Statehouse Senate ▼ 2pm/1 MT Feb. 5, 19 & 26 1pm/ Noon MT 2/12	Statehouse Press Briefings Republicans, Democrats, Governor		
2:30/1:30 MT							
3pm/2 MT							
3:30/2:30MT							
4pm / 3 MT	SD Focus ▼	Newsline	Newsline	Newsline	Newsline	To The Contrary	Local documentary
4:30 / 3:30 MT	Feb. 2, 16 & 23	Journal	Journal	Journal	Journal	Washington Week	▼ or opera
5pm / 4 MT						NewsHour Wkend	NewsHour Wkend
5:30 / 4:30 MT	Documentary	Documentary	Documentary	Documentary	Documentary	Charlie Rose	Dakota Life ▼

Create – SDPB3 Programming

SDPB3	SUNDAY & WEDNESDAY		MONDAY & FRIDAY	TUESDAY & THURSDAY	SATURDAY THEME DAYS
5am / 4 MT	Knitting Daily		Lap Quilting/ Quilting Arts (2/9)	Knit & Crochet Now!	February 7 "Great American Pie"
5:30/4:30 MT	Beauty of Oil Painting		Paint This	Joy of Painting	
6am / 5 MT	Jacques Pepin: More Fast Food		New Scandinavian/ Perfect Day (2/13)	Chef John Besh's Family Table	February 14 "Love at First Sight" Travel, food, art, crafts.
6:30/5:30 MT	Mexico – One Plate at a Time		Mike Colameco's Real Food	Taste This	
7am / 6 MT	Pati's Mexican Table		Ciao Italia	Jazzy Vegetarian	
7:30/6:30 MT	Cooking with Nick Stellino		Joanne Weir's Cooking Confidence	Christina	February 21 "Chinese New Year" Travel, food, culture.
8am / 7 MT	Islands without Cars		Globe Trekker	Smart Travels with Rudy Maxa	
8:30/7:30 MT	Travel with Kids			In the Americas	
9am / 8 MT	Lakota Berenstain	Ask This Old House	This Old House	Hometime	February 28 "Rise and Shine" Breakfasts.
9:30/8:30 MT	American Woodshop		Rough Cut – Woodworking	Woodsmith Shop	
10am / 9 MT	Greener World	Garden Smart	P. Allen Smith's Garden Home	The Victory Garden's Edible Feast	
10:30/9:30 MT	Katie Brown Workshop		Winemakers/ Beads, Baubles (2/6)	For Your Home	February 28 "Rise and Shine" Breakfasts.
11am / 10 MT	Various	Knitting Daily	Lap Quilting/ Quilting Arts (2/9)	Knit & Crochet Now!	
11:30/10:30MT	Various	Oil Painting	Paint This	Joy of Painting	Signing Time!
Noon/ 11 MT	Dinosaur Train	Jacques Pepin	New Scandinavian/ Perfect Day (2/13)	Chef John Besh's Family Table	
12:30/11:30MT	Peg + Cat	Mexico – One Plate	Mike Colameco's Real Food	Taste This	Biz Kid\$
1pm/ Noon MT	Cat in the Hat	Mexican Table	Ciao Italia	Jazzy Vegetarian	Zula Patrol
1:30/12:30 MT	Odd Squad	Cooking w/ Nick	Joanne Weir's Cooking Confidence	Christina	Space Racers
2pm/ 1 MT	Wild Kratts	Islands w/o Cars	Globe Trekker	Smart Travels with Rudy Maxa	SciGirls
2:30/1:30 MT	Arthur	Travel with Kids		In the Americas	Arthur
3pm/2 MT	Cyberchase	Rick Steves	Rick Steves' Europe	Rick Steves' Europe	WordGirl!
3:30/2:30MT	Barney & Friends	Amer. Woodshop	Rough Cut – Woodworking	Woodsmith Shop	Wild Kratts
4pm/ 3 MT	Mister Rogers	Garden Smart	P. Allen Smith's Garden Home	The Victory Garden's Edible Feast	Little Amadeus
4:30/3:30MT	Maya & Miguel	Katie Brown	Winemakers/ Beads, Baubles (2/6)	For Your Home	Anne /Grn Gables
5pm / 4 MT	Berenstain Bears	Ask This Old House	This Old House	Hometime	Martha Speaks
5:30/4:30 MT	Clifford	Martha Bakes	Martha Bakes	Martha Bakes	Nature Adven. 🐦
6pm / 5 MT	Moveable Feast		Simply Ming	Sara's Weeknight Meals	February 7 "Great American Pie"
6:30/5:30 MT	Hubert Keller: Secrets of a Chef		Essential Pepin	Baking with Julia	
7pm / 6 MT	Martha Stewart	Lidia's Kitchen	Lidia's Kitchen	Martha Stewart's Cooking School	February 14 "Love at First Sight" Travel, food, crafts.
7:30/6:30 MT	America's Test Kitchen		America's Test Kitchen	America's Test Kitchen	
8pm / 7 MT	Cooking	Cooking w/ Nick	New Scandinavian/ Perfect Day (2/13)	Cooking with Friends	
8:30/7:30 MT	Martha Bakes		Martha Bakes	Martha Bakes	February 21 "Chinese New Year" Travel, food, culture.
9pm / 8 MT	Ask This Old House		This Old House	Hometime	
9:30/8:30 MT	Rick Steves' Europe		Rick Steves' Europe	Rick Steves' Europe	February 28 "Rise and Shine" Breakfasts.
10pm / 9 MT	Rudy Maxa's World		Travelscope	Burt Wolf: Travels and Traditions	
10:30/9:30 MT	Martha Stewart	Lidia's Kitchen	Lidia's Kitchen	Martha Stewart's Cooking School	Test Kitchen
11pm / 10 MT	America's Test Kitchen		America's Test Kitchen	America's Test Kitchen	
11:30/10:30MT	Moveable Feast		Simply Ming	Sara's Weeknight Meals	Simply Ming
Mid./ 11 MT	New Scandinavian/ Perfect Day (2/13)		New Scandinavian/ Perfect Day (2/13)	Chef John Besh's Family Table	Chef John Besh
12:30/11:30MT	Rick Steves' Europe		Rick Steves' Europe	Rick Steves' Europe	Rick Steves
1am/Mid. MT	Martha Stewart	Lidia's Kitchen	Lidia's Kitchen	Martha Stewart's Cooking School	Lidia's Kitchen
1:30/12:30 MT	America's Test Kitchen		America's Test Kitchen	America's Test Kitchen	Test Kitchen
2am/ 1 MT	Cooking	Cooking with Nick	New Scandinavian/ Perfect Day (2/13)	Cooking with Friends	Cooking w/ Nick
2:30/1:30 MT	Martha Bakes		Martha Bakes	Martha Bakes	Martha Bakes
3am/2 MT	Ask This Old House		This Old House	Hometime	This Old House
3:30/2:30MT	Rick Steves' Europe		Rick Steves' Europe	Rick Steves' Europe	Rick Steves
4sm/3 MT	Rudy Maxa's World		Travelscope	Burt Wolf: Travels & Traditions	Travelscope
4:30/3:30 MT	Martha Stewart	Lidia's Kitchen	Lidia's Kitchen	Martha Stewart's Cooking School	Lidia's Kitchen

- SDPB Television programs are Closed Captioned for the Hearing Impaired.
- Go to SDPB.org for program details and schedule changes.
- 🐦 Indicates locally produced programming.
- SDPB2 and SDPB3 are available free over-the-air via antenna and on most cable systems. Call your local provider to find out where you can find them on your cable system.

SUNDAY – FEBRUARY 1

SDPB1

- 1:00 (Noon MT) **South Dakota Focus** ▼
- 2:00 (1:00 MT) **Statehouse** ▼
- 3:00 (2:00 MT) **Carpe Diem** *Fishy Tale*
- 4:00 (3:00 MT) **Rick Steves' Europe**
- 4:30 (3:30 MT) **Nature Adventures** ▼ *Our Gulf Coast Wildlife Adventure*
- 5:00 (4:00 MT) **Antiques Roadshow** *Austin I*
- 6:00 (5:00 MT) **Lawrence Welk**
- 7:00 (6:00 MT) **Great British Baking Show**
- 8:00 (7:00 MT) **Masterpiece Classic** *Downton Abbey Season 5 Part 5 of 9*
- 9:00 (8:00 MT) **Manor of Speaking**
- 9:30 (8:30 MT) **Masterpiece Mystery!** *Grantchester Part 3 of 6*
- 10:30 (9:30 MT) **Vicious Park** 4 of 6
- 11:00 (10:00 MT) **Globe Trekker** *Pacific Journeys: Santiago to Pitcairn*
- Midnight (11:00 MT) **Washington Week**

SDPB2

- 2:00 (1:00 MT) **Great Performances at the Met** *Macbeth*
- 5:00 (4:00 MT) **PBS NewsHour** *Weekend*
- 5:30 (4:30 MT) **Visa Dream**
- 6:00 (5:00 MT) **Great Conversations** *Steven Pinker*
- 7:00 (6:00 MT) **Nature** *Penguin Post Office*
- 8:00 (7:00 MT) **Shakespeare Uncovered** *A Midsummer Night's Dream with Hugh Bonneville*
- 9:00 (8:00 MT) **Global Voices** *Last Train Home*
- 10:30 (9:30 MT) **POV** *Listening Is an Act of Love*
- 11:00 (10:00 MT) **Nature** *Penguin Post Office*
- Midnight (11:00 MT) **Shakespeare Uncovered** *A Midsummer Night's Dream with Hugh Bonneville*

MONDAY – FEBRUARY 2

SDPB1

- 6:00 (5:00 MT) **PBS NewsHour**
- 7:00 (6:00 MT) **Antiques Roadshow** *Austin II / San Diego I*
- 9:00 (8:00 MT) **A Path Appears** Part 2 of 3
- 10:30 (9:30 MT) **BBC World News**
- 11:00 (10:00 MT) **Charlie Rose**

Midnight (11:00 MT) **Tavis Smiley**

SDPB2

- 6:00 (5:00 MT) **Independent Lens** *The Powerbroker: Whitney Young*
- 7:00 (6:00 MT) **AfroPoP** *Sound of Torture*
- 8:00 (7:00 MT) **Local USA** *Finding One's Voice*
- 8:30 (7:30 MT) **Film School Shorts** *Sum of Its Parts*
- 9:00 (8:00 MT) **PBS NewsHour**
- 10:00 (9:00 MT) **Nightly Business Report**
- 10:30 (9:30 MT) **Journal**
- 11:00 (10:00 MT) **Independent Lens** *The Powerbroker: Whitney Young*
- Midnight (11:00 MT) **AfroPoP** *Sound of Torture*

TUESDAY – FEBRUARY 3

SDPB1

- 6:00 (5:00 MT) **PBS NewsHour**
- 7:00 (6:00 MT) **Genealogy Roadshow** *New Orleans – Board of Trade*
- 8:00 (7:00 MT) **American Experience** *The Big Burn*
- 9:00 (8:00 MT) **Frontline**
- 10:00 (9:00 MT) **Keeping Up Appearances**
- 10:30 (9:30 MT) **BBC World News**
- 11:00 (10:00 MT) **Charlie Rose**
- Midnight (11:00 MT) **Tavis Smiley**

SDPB2

- 2:00 (1:00 MT) **Statehouse House** ▼ and **Statehouse Senate** ▼
- 5:30 (4:30 MT) **Global Voices** *Last Train Home*
- 7:00 (6:00 MT) **America Reframed** *Our Mockingbird*
- 9:00 (8:00 MT) **PBS NewsHour**
- 10:00 (9:00 MT) **Nightly Business Report**
- 10:30 (9:30 MT) **Journal**
- 11:00 (10:00 MT) **America Reframed** *Our Mockingbird*

WEDNESDAY – FEBRUARY 4

SDPB1

- 6:00 (5:00 MT) **PBS NewsHour**
- 7:00 (6:00 MT) **Nature** *Legendary White Stallions*
- 8:00 (7:00 MT) **Earth A New Wild** *Home/ Plains*



Photo: Ami Vitale

Earth a New Wild, a five-part series, takes a fresh look at humankind's relationship to nature. Dr. M. Sanjayan, a leading conservation scientist, finds humans are part of every aspect of the planet's natural systems. With up-close looks at a range of species, from giant pandas to humpback whales and African lions to Arctic reindeer, Sanjayan reveals that co-habitations with animals can work – and be mutually beneficial.

SDPB1:

- Wednesday, Feb. 4, 8pm (7 MT) (two episodes)
- Wednesdays, Feb. 11, 18 & 25, 9pm (8 MT)

SDPB2:

- Thursday, Feb. 5, 6pm (5 MT) & 11pm (10 MT) (two episodes)
- Thursdays, Feb. 12, 19 & 26, 7pm (6 MT) & Midnight (11 MT)

- 10:00 (9:00 MT) **Last of the Summer Wine**
- 10:30 (9:30 MT) **BBC World News**
- 11:00 (10:00 MT) **Charlie Rose**
- Midnight (11:00 MT) **Tavis Smiley**

SDPB2

- 2:00 (1:00 MT) **Statehouse House** ▼ and **Statehouse Senate** ▼
- 6:00 (5:00 MT) **A Path Appears** Part 2 of 3
- 7:30 (6:30 MT) **Frontline**
- 9:00 (8:00 MT) **PBS NewsHour**
- 10:00 (9:00 MT) **Nightly Business Report**
- 10:30 (9:30 MT) **Journal**
- 11:00 (10:00 MT) **A Path Appears** Part 2 of 3
- 11:30 (10:30 MT) **Frontline**

THURSDAY – FEBRUARY 5

SDPB1

- 6:00 (5:00 MT) **PBS NewsHour**
- 7:00 (6:00 MT) **On Call** ▼
- 8:00 (7:00 MT) **Dakota Life** ▼
- 8:30 (7:30 MT) **Images of the Past** ▼
- 9:00 (8:00 MT) **Doc Martin**
- 9:54 (8:54 MT) **Star Gazers**
- 10:00 (9:00 MT) **As Time Goes By**
- 10:30 (9:30 MT) **BBC World News**
- 11:00 (10:00 MT) **Charlie Rose**
- Midnight (11:00 MT) **Tavis Smiley**

SDPB2

- 1:00 (Noon MT) **Our Statehouse** ▼ *A Capitol Idea*
- 2:00 (1:00 MT) **Statehouse House** ▼ and **Statehouse Senate** ▼
- 6:00 (5:00 MT) **Earth a New Wild** *Home/ Plains*
- 8:00 (7:00 MT) **America by the Numbers** *Our Private Idaho/ Island of Warriors*
- 9:00 (8:00 MT) **PBS NewsHour**
- 10:00 (9:00 MT) **Nightly Business Report**
- 10:30 (9:30 MT) **Journal**



Photo: Pat Garin

Penelope McCarthy helps a diverse family unravel its past in an episode of **Genealogy Roadshow**. Experts use history and science to uncover their fascinating family stories. Each individual's past links to a larger community history, revealing the rich cultural tapestry of America. The Season 2 programs feature participants from three American cities – St. Louis, New Orleans and Philadelphia – who want to explore a genealogical mystery.

SDPB1: Tuesdays, 7pm (6 MT)

(February 5, continued)

11:00 (10:00 MT) Earth a New Wild Home/ Plains

FRIDAY – FEBRUARY 6

SDPB1

6:00 (5:00 MT) PBS NewsHour
7:00 (6:00 MT) Washington Week
7:30 (6:30 MT) Charlie Rose The Week
8:00 (7:00 MT) McLaughlin Group
8:30 (7:30 MT) Market to Market
9:00 (8:00 MT) Statehouse ▼
10:00 (9:00 MT) Shakespeare Uncovered
The Taming of the Shrew with Morgan Freeman/ Othello with David Harewood
Midnight (11:00 MT) Tavis Smiley

SDPB2

9:30am (8:30 MT) Statehouse Press Briefings ▼
1:00 (Noon MT) Statehouse House ▼ and **Statehouse Senate** ▼
6:00 (5:00 MT) American Masters Bill T. Jones: A Good Man
7:30 (6:30 MT) Harpist's Legacy Ann Hobson Pilot and the Sound of Change
8:00 (7:00 MT) Reason to Dance
9:00 (8:00 MT) PBS NewsHour
10:00 (9:00 MT) Nightly Business Report
10:30 (9:30 MT) Journal
11:00 (10:00 MT) American Masters Bill T. Jones: A Good Man

SATURDAY – FEBRUARY 7

SDPB1

6:00 (5:00 MT) Lawrence Welk
7:00 (6:00 MT) Doc Martin
8:00 (7:00 MT) Keeping Up Appearances
8:30 (7:30 MT) As Time Goes By
9:00 (8:00 MT) Last of the Summer Wine
9:30 (8:30 MT) Red Green Show
9:54 (8:54 MT) Star Gazers
10:00 (9:00 MT) No Cover, No Minimum ▼
Janitor Bob & the Armchair Cowboys
11:00 (10:00 MT) Austin City Limits Foo Fighters

SDPB2

1:00 (Noon MT) American Masters Bill T. Jones: A Good Man
2:30 (1:30 MT) Harpist's Legacy Ann Hobson Pilot and the Sound of Change
3:00 (2:00 MT) Reason to Dance
4:00 (3:00 MT) To the Contrary
4:30 (3:30 MT) Washington Week
5:00 (4:00 MT) PBS NewsHour Weekend



Photo: Blink Films

As urban space shrinks, we build higher and faster than ever before, creating a new generation of skyscrapers. In **Super Skyscrapers**, a four-hour series, we see how buildings are pushing the limits of engineering, technology and design to become greener, stronger, smarter and more luxurious.

SDPB2: Saturdays, Feb. 7 & 14, 7pm (6 MT) and 11pm (10 MT)

5:30 (4:30 MT) Charlie Rose The Week
6:00 (5:00 MT) Focus on Europe
6:30 (5:30 MT) Global 3000
7:00 (6:00 MT) Super Skyscrapers One World Trade Center/ Building the Future
9:00 (8:00 MT) America Reframed Our Mockingbird
11:00 (10:00 MT) Super Skyscrapers One World Trade Center/ Building the Future

SUNDAY – FEBRUARY 8

SDPB1

1:00 (Noon MT) Dakota Life ▼
1:30 (12:30 MT) Images of the Past ▼
2:00 (1:00 MT) Statehouse ▼
3:00 (2:00 MT) Horse Tribe
4:00 (3:00 MT) Rick Steves' Europe
4:30 (3:30 MT) Nature Adventures ▼ *The Wild Side of Cozumel*
5:00 (4:00 MT) Antiques Roadshow Austin II
6:00 (5:00 MT) Lawrence Welk
7:00 (6:00 MT) Great British Baking Show
8:00 (7:00 MT) Masterpiece Classic Downton Abbey Season 5 Part 6 of 9
9:00 (8:00 MT) Manor of Speaking
9:30 (8:30 MT) Masterpiece Mystery! Grantchester Part 4 of 6
10:30 (9:30 MT) Vicious Part 5 of 6

11:00 (10:00 MT) Globe Trekker Pacific Journeys: Tonga to New Caledonia
Midnight (11:00 MT) Washington Week

SDPB2

4:00 (3:00 MT) Our Statehouse ▼ *A Capitol Idea*
5:00 (4:00 MT) PBS NewsHour Weekend
5:30 (4:30 MT) Dakota Life ▼
6:00 (5:00 MT) Great Conversations Ray Kurzweil & Jim Fleming
7:00 (6:00 MT) Nature Legendary White Stallions
8:00 (7:00 MT) Shakespeare Uncovered King Lear with Christopher Plummer
9:00 (8:00 MT) Last Will & Testament
10:00 (9:00 MT) Shakespeare Lost, Shakespeare Found
10:30 (9:30 MT) The Education of Harvey Gantt
11:00 (10:00 MT) Nature Legendary White Stallions
Midnight (11:00 MT) Shakespeare Uncovered King Lear with Christopher Plummer

MONDAY – FEBRUARY 9

SDPB1

6:00 (5:00 MT) PBS NewsHour
7:00 (6:00 MT) Antiques Roadshow Austin III / Celebrating Black Americana

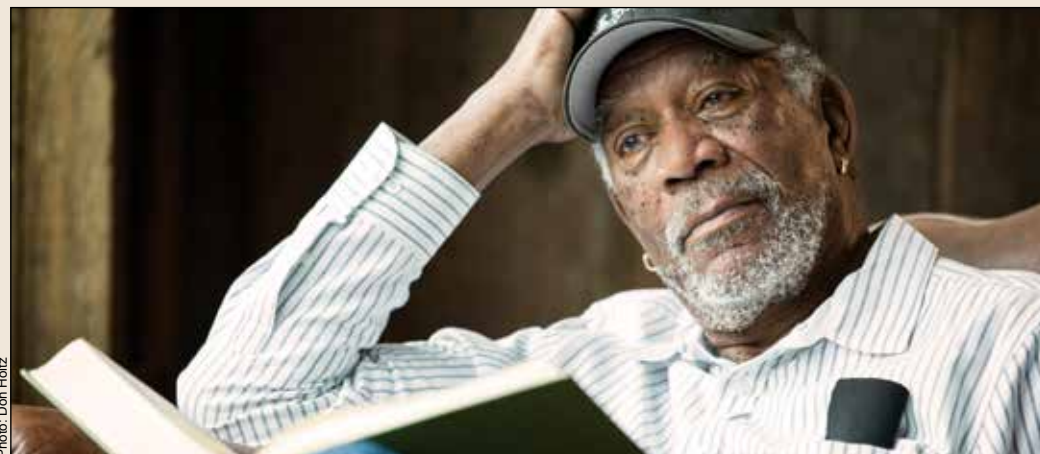


Photo: Don Holz

Modern actors share insights on Shakespeare's classic plays in **Shakespeare Uncovered**. The series combines history, biography, performances, new analysis, and the personal passions of famed celebrities like Morgan Freeman (pictured) to tell the stories behind the stories of Shakespeare's greatest plays.

SDPB1: Fridays, Jan. 30, Feb. 6, Feb. 13, 10pm (9 MT)
SDPB2: Sundays, Feb. 1, 8, 15 & 22, 8pm (7 MT) & Midnight (11pm)

(February 9, continued)

- 9:00 (8:00 MT) **A Path Appears** Part 3 of 3
- 10:30 (9:30 MT) **BBC World News**
- 11:00 (10:00 MT) **Charlie Rose**
- Midnight (11:00 MT) **Tavis Smiley**

SDPB2

- 2:00 (1:00 MT) **Statehouse House** and **Statehouse Senate**
- 6:00 (5:00 MT) **Independent Lens** *More than a Month*
- 7:00 (6:00 MT) **AfroPoP** *The Triptych*
- 8:00 (7:00 MT) **Local USA** *Head Trauma at War*
- 8:30 (7:30 MT) **Film School Shorts** *Risky Business*
- 9:00 (8:00 MT) **PBS NewsHour**
- 10:00 (9:00 MT) **Nightly Business Report**
- 10:30 (9:30 MT) **Journal**
- 11:00 (10:00 MT) **Independent Lens** *More than a Month*
- Midnight (11:00 MT) **AfroPoP** *The Triptych*

TUESDAY- FEBRUARY 10

SDPB1

- 6:00 (5:00 MT) **PBS NewsHour**
- 7:00 (6:00 MT) **Genealogy Roadshow** *St. Louis - Union Station*
- 8:00 (7:00 MT) **American Experience** *Forgotten Plague*
- 9:00 (8:00 MT) **Frontline** *Being Mortal*
- 10:00 (9:00 MT) **Keeping Up Appearances**
- 10:30 (9:30 MT) **BBC World News**
- 11:00 (10:00 MT) **Charlie Rose**
- Midnight (11:00 MT) **Tavis Smiley**

SDPB2

- 2:00 (1:00 MT) **Statehouse House** and **Statehouse Senate**
- 5:00 (4:00 MT) **Frontline** *The Interrupters*
- 7:00 (6:00 MT) **America Reframed** *The Hill*
- 8:30 (7:30 MT) **Summer Hill**
- 9:00 (8:00 MT) **PBS NewsHour**
- 10:00 (9:00 MT) **Nightly Business Report**
- 10:30 (9:30 MT) **Journal**
- 11:00 (10:00 MT) **America Reframed** *The Hill*

WEDNESDAY - FEBRUARY 11

SDPB1

- 6:00 (5:00 MT) **PBS NewsHour**
- 7:00 (6:00 MT) **Nature** *Animal Odd Couples*

- 8:00 (7:00 MT) **NOVA** *Colosseum - Roman Death Trap*
- 9:00 (8:00 MT) **Earth a New Wild** *Forests*
- 10:00 (9:00 MT) **Last of the Summer Wine**
- 10:30 (9:30 MT) **BBC World News**
- 11:00 (10:00 MT) **Charlie Rose**
- Midnight (11:00 MT) **Tavis Smiley**

SDPB2

- 2:00 (1:00 MT) **Statehouse House** and **Statehouse Senate**
- 6:00 (5:00 MT) **A Path Appears** Part 3 of 3
- 7:30 (6:30 MT) **Harpist's Legacy** *Ann Hobson Pilot and the Sound of Change*
- 8:00 (7:00 MT) **Frontline** *Being Mortal*
- 9:00 (8:00 MT) **PBS NewsHour**
- 10:00 (9:00 MT) **Nightly Business Report**
- 10:30 (9:30 MT) **Journal**
- 11:00 (10:00 MT) **A Path Appears** Part 3 of 3

THURSDAY - FEBRUARY 12

SDPB1

- 6:00 (5:00 MT) **PBS NewsHour**
- 7:00 (6:00 MT) **On Call**
- 8:00 (7:00 MT) **South Dakota Focus** *Criminal Justice Reform*
- 9:00 (8:00 MT) **Doc Martin**
- 9:54 (8:54 MT) **Star Gazers**
- 10:00 (9:00 MT) **As Time Goes By**
- 10:30 (9:30 MT) **BBC World News**
- 11:00 (10:00 MT) **Charlie Rose**
- Midnight (11:00 MT) **Tavis Smiley**

SDPB2

- 9:30am (8:30 MT) **Statehouse Press Briefings**
- 1:00 (Noon MT) **Statehouse House** and **Statehouse Senate**
- 6:00 (5:00 MT) **NOVA** *Colosseum - Roman Death Trap*
- 7:00 (6:00 MT) **Earth a New Wild** *Forests*
- 8:00 (7:00 MT) **America by the Numbers** *Native American Boomtown/ Our Private Idaho*
- 9:00 (8:00 MT) **PBS NewsHour**
- 10:00 (9:00 MT) **Nightly Business Report**
- 10:30 (9:30 MT) **Journal**
- 11:00 (10:00 MT) **NOVA** *Colosseum - Roman Death Trap*
- Midnight (11:00 MT) **Earth a New Wild** *Forests*



Photo: Frontline

Frontline teams up with writer and surgeon Atul Gawande in *Being Mortal* to examine how doctors care for terminally ill patients. The relationships between doctors and patients nearing the end of life are challenging. Many doctors - including Gawande himself - struggle to talk honestly and openly with their dying patients.

SDPB1: Tuesday, Feb. 10, 9pm (8 MT)

FRIDAY - FEBRUARY 13

SDPB1

- 6:00 (5:00 MT) **PBS NewsHour**
- 7:00 (6:00 MT) **Washington Week**
- 7:30 (6:30 MT) **Charlie Rose** *The Week*
- 8:00 (7:00 MT) **McLaughlin Group**
- 8:30 (7:30 MT) **Market to Market**
- 9:00 (8:00 MT) **Statehouse**
- 10:00 (9:00 MT) **Shakespeare Uncovered** *Antony & Cleopatra with Kim Cattrall / Romeo & Juliet with Ralph Fiennes*
- Midnight (11:00 MT) **Tavis Smiley**

SDPB2

- 6:00 (5:00 MT) **American Experience** *The Triangle Fire/ Forgotten Plague/ Big Burn*
- 9:00 (8:00 MT) **PBS NewsHour**
- 10:00 (9:00 MT) **Nightly Business Report**
- 10:30 (9:30 MT) **Journal**
- 11:00 (10:00 MT) **American Experience** *The Triangle Fire/ Forgotten Plague/ Big Burn*

SATURDAY - FEBRUARY 14

SDPB1

- 6:00 (5:00 MT) **Lawrence Welk**
- 7:00 (6:00 MT) **Doc Martin**
- 8:00 (7:00 MT) **Keeping Up Appearances**
- 8:30 (7:30 MT) **As Time Goes By**
- 9:00 (8:00 MT) **Last of the Summer Wine**
- 9:30 (8:30 MT) **Red Green Show**
- 9:54 (8:54 MT) **Star Gazers**
- 10:00 (9:00 MT) **No Cover, No Minimum** *Cracker*
- 11:00 (10:00 MT) **Austin City Limits** *Barenaked Ladies*

SDPB2

- 1:00 (Noon MT) **American Experience** *The Triangle Fire/ Forgotten Plague/ Big Burn*
- 4:00 (3:00 MT) **To the Contrary**
- 4:30 (3:30 MT) **Washington Week**
- 5:00 (4:00 MT) **PBS NewsHour** *Weekend*
- 5:30 (4:30 MT) **Charlie Rose** *The Week*
- 6:00 (5:00 MT) **Focus on Europe**



American Experience confronts a killer in *The Forgotten Plague*. Tuberculosis is the deadliest killer in human history, responsible for one in four deaths for almost two centuries. What many don't realize is that the disease shaped the medical profession, social habits, economic development and public policy - changes that are still felt today.

SDPB1: Tuesday, Feb. 10, 8pm (7 MT)
SDPB2: Friday, Feb. 13, 7pm (6 MT) & Midnight (11 MT)

Photo: Library of Congress

(February 14, continued)

- 6:30 (5:30 MT) **Global 3000**
- 7:00 (6:00 MT) **Super Skyscrapers** *The Vertical City/ The Billionaire Building*
- 9:00 (8:00 MT) **America Reframed** *The Hill*
- 10:30 (9:30 MT) **Summer Hill**
- 11:00 (10:00 MT) **Super Skyscrapers** *The Vertical City/ The Billionaire Building*

SUNDAY – FEBRUARY 15

- SDPB1**
- 1:00 (Noon MT) **South Dakota Focus** ▼
Criminal Justice Reform
- 2:00 (1:00 MT) **Statehouse** ▼
- 3:00 (2:00 MT) **Danube – Europe’s Amazon**
- 4:00 (3:00 MT) **Rick Steves’ Europe**
- 4:30 (3:30 MT) **Nature Adventures** ▼ *Marine Mammals of the West Coast*
- 5:00 (4:00 MT) **Antiques Roadshow** *Austin III*
- 6:00 (5:00 MT) **Lawrence Welk**
- 7:00 (6:00 MT) **Great British Baking Show**
- 8:00 (7:00 MT) **Masterpiece Classic** *Downton Abbey Season 5 Part 7 of 9*
- 9:00 (8:00 MT) **Manor of Speaking**
- 9:30 (8:30 MT) **Masterpiece Mystery!**
Grantchester Part 5 of 6
- 10:30 (9:30 MT) **Vicious** Part 6 of 6
- 11:00 (10:00 MT) **Globe Trekker** *Barcelona City Guide*
- Midnight (11:00 MT) **Washington Week**

- SDPB2**
- 4:00 (3:00 MT) **The Badlands** ▼ *Nature’s Time Capsule*
- 5:00 (4:00 MT) **PBS NewsHour Weekend**
- 5:30 (4:30 MT) **Summer Hill**
- 6:00 (5:00 MT) **Great Conversations** *Rick Pitino & Joe Nocera*
- 7:00 (6:00 MT) **Nature Animal Odd Couples**
- 8:00 (7:00 MT) **Shakespeare Uncovered** *The Taming of the Shrew with Morgan Freeman*
- 9:00 (8:00 MT) **In Search of Shakespeare A** *Time of Revolution*
- 10:00 (9:00 MT) **Shakespeare Uncovered** *Macbeth with Ethan Hawke*
- 11:00 (10:00 MT) **Nature Animal Odd Couples**
- Midnight (11:00 MT) **Shakespeare Uncovered** *The Taming of the Shrew with Morgan Freeman*

MONDAY – FEBRUARY 16

- SDPB1**
- 6:00 (5:00 MT) **PBS NewsHour**
- 7:00 (6:00 MT) **Antiques Roadshow** *Bismarck I / San Diego II*
- 9:00 (8:00 MT) **Independent Lens** *Through a Lens Darkly: Black Photographers and the Emergence of a People*
- 10:30 (9:30 MT) **BBC World News**
- 11:00 (10:00 MT) **Charlie Rose**
- Midnight (11:00 MT) **Tavis Smiley**
- SDPB2**
- 6:00 (5:00 MT) **Black Kungfu Experience**
- 7:00 (6:00 MT) **AfroPoP** *The Abominable Crime*
- 8:30 (7:30 MT) **Film School Shorts** *Creature Comforts*
- 9:00 (8:00 MT) **PBS NewsHour**
- 10:00 (9:00 MT) **Nightly Business Report**
- 10:30 (9:30 MT) **Journal**
- 11:00 (10:00 MT) **Black Kungfu Experience**
- Midnight (11:00 MT) **AfroPoP** *The Abominable Crime*

TUESDAY – FEBRUARY 17

- SDPB1**
- 6:00 (5:00 MT) **PBS NewsHour**
- 7:00 (6:00 MT) **Genealogy Roadshow** *Philadelphia – Historical Society*
- 8:00 (7:00 MT) **The Italian Americans** *La Famiglia (1890-1910)/ Becoming Americans (1910-1930)*
- 10:00 (9:00 MT) **Keeping Up Appearances**
- 10:30 (9:30 MT) **BBC World News**
- 11:00 (10:00 MT) **Charlie Rose**
- Midnight (11:00 MT) **Tavis Smiley**
- SDPB2**
- 2:00 (1:00 MT) **Statehouse House** ▼ and **Statehouse Senate** ▼
- 5:30 (4:30 MT) **Independent Lens** *The Trials of Muhammad Ali*
- 7:00 (6:00 MT) **America Reframed** *Shell Shocked*
- 8:00 (7:00 MT) **POV** *15 to Life: Kenneth’s Story*
- 9:00 (8:00 MT) **PBS NewsHour**
- 10:00 (9:00 MT) **Nightly Business Report**
- 10:30 (9:30 MT) **Journal**
- 11:00 (10:00 MT) **America Reframed** *Shell Shocked*
- Midnight (11:00 MT) **POV** *15 to Life: Kenneth’s Story*

WEDNESDAY – FEBRUARY 18

- SDPB1**
- 6:00 (5:00 MT) **PBS NewsHour**
- 7:00 (6:00 MT) **Nature Owl Power**
- 8:00 (7:00 MT) **NOVA** *Petra – Lost City of Stone*
- 9:00 (8:00 MT) **Earth a New Wild** *Oceans*
- 10:00 (9:00 MT) **Last of the Summer Wine**
- 10:30 (9:30 MT) **BBC World News**
- 11:00 (10:00 MT) **Charlie Rose**
- Midnight (11:00 MT) **Tavis Smiley**
- SDPB2**
- 2:00 (1:00 MT) **Statehouse House** ▼ and **Statehouse Senate** ▼
- 6:00 (5:00 MT) **Artist Toolbox** *Sam Gilliam*
- 6:30 (5:30 MT) **Independent Lens** *Through a Lens Darkly: Black Photographers and the Emergence of a People*
- 8:00 (7:00 MT) **Colored Frames**
- 9:00 (8:00 MT) **PBS NewsHour**
- 10:00 (9:00 MT) **Nightly Business Report**
- 10:30 (9:30 MT) **Journal**
- 11:00 (10:00 MT) **Artist Toolbox** *Sam Gilliam*
- 11:30 (10:30 MT) **Independent Lens** *Through a Lens Darkly: Black Photographers and the Emergence of a People*

THURSDAY – FEBRUARY 19

- SDPB1**
- 6:00 (5:00 MT) **PBS NewsHour**
- 7:00 (6:00 MT) **On Call** ▼
- 8:00 (7:00 MT) **South Dakota Focus** ▼
Domestic Violence
- 9:00 (8:00 MT) **Doc Martin**
- 9:54 (8:54 MT) **Star Gazers**
- 10:00 (9:00 MT) **As Time Goes By**
- 10:30 (9:30 MT) **BBC World News**
- 11:00 (10:00 MT) **Charlie Rose**
- Midnight (11:00 MT) **Tavis Smiley**
- SDPB2**
- 2:00 (1:00 MT) **Statehouse House** ▼ and **Statehouse Senate** ▼
- 6:00 (5:00 MT) **NOVA** *Petra – Lost City of Stone*
- 7:00 (6:00 MT) **Earth a New Wild** *Oceans*



Photo: Jupiter Images

For centuries, owls have played a role in children’s stories and folk tales. Using modern camera technology, computer graphics, x-rays and ultra-microscopes, **Nature** takes a new look at the feathered creatures in *Owl Power*. The details of how they hunt, how their vision and hearing work, and how they fly so silently are influencing 21st-century technology and design, from high-tech aircraft and submarines to innovative hearing aids.

SDPB1: Wednesday, Feb. 18, 7pm (6 MT)
SDPB2: Sunday, Feb. 22, 7pm (6 MT) & 11pm (10 MT)

- 8:00 (7:00 MT) **America by the Numbers** *Politics of the New South/ Native American Boomtown*
- 9:00 (8:00 MT) **PBS NewsHour**
- 10:00 (9:00 MT) **Nightly Business Report**
- 10:30 (9:30 MT) **Journal**
- 11:00 (10:00 MT) **NOVA** *Petra – Lost City of Stone*
- Midnight (11:00 MT) **Earth a New Wild** *Oceans*

FRIDAY – FEBRUARY 20

- SDPB1**
- 6:00 (5:00 MT) **PBS NewsHour**
- 7:00 (6:00 MT) **Washington Week**
- 7:30 (6:30 MT) **Charlie Rose** *The Week*
- 8:00 (7:00 MT) **McLaughlin Group**
- 8:30 (7:30 MT) **Market to Market**
- 9:00 (8:00 MT) **Statehouse** ▼
- 10:00 (9:00 MT) **American Masters** *August Wilson*
- 11:30 (10:30 MT) **Dakota Life**
- Midnight (11:00 MT) **Tavis Smiley**

(continued on page 14)



(Above) Gayle Grothe, Friends of SDPB Membership Manager, got into the spirit of things in her Mrs. Patmore costume. (Left) Costumes and hats were a big hit in Brookings.



A young "footman" serves at the tea in Watertown.

Tea with SDPB

Friends of SDPB celebrated the new season of **Masterpiece Classic *Downton Abbey*** with afternoon teas in eight South Dakota locations on Jan. 3 – Aberdeen, Brookings, Deadwood, Pierre, Rapid City, Sioux Falls, Watertown and Yankton. Over 450 Downton fans enjoyed an afternoon tea, played trivia, and learned about the new season of the hit series.

Season 5 continues in February with new episodes on Sundays at 8pm.



A debonair gentleman in Pierre was a hit with the ladies.



(Right) The food was sumptuous.



Terrie Koehne, far left, Friends of SDPB Corporate Development Manager, was part of the serving staff in Deadwood.



Two Rapid City fans reflect the elegant side of Downton.

Tune in for Rare Glimpses of South Dakota History

Images of the Past, SDPB's extensive online library of South Dakota history, will be spotlighted on SDPB1 Television on Thursday, Feb. 5 at 8:30pm (7:30 MT) and Sunday, Feb. 8, at 1:30pm (12:30 MT).

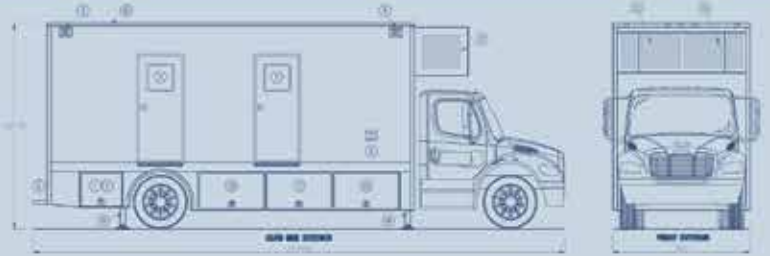
The half-hour program offers an

overview of the **Images of the Past** online content library, with a focus some compelling video artifacts.

Images of the Past reveals moments in South Dakota history preserved in film, video, pictures, and sound. Some of the images

recall people and places we know and recognize, others provide rare views of South Dakota landscapes and communities much changed over time or lost altogether. Check out the website at SDPB.org/ImagesofthePast.

SDPB ON THE ROAD!



OVER 650 HOURS OF LOCALLY PRODUCED TELEVISION ANNUALLY INCLUDING:

Statehouse

High School Achievement

South Dakota Documentaries

Music Specials



SDPB Television needs your help in funding a third of the cost of a new mobile production vehicle. Friends of SDPB is working to raise \$233,000, to assist in financing a fully equipped, High Definition production vehicle.



YOU CAN BE AN MVP FOR OUR MPV WITH A DONATION.



To Donate Contact:
Friends of South Dakota Public Broadcasting
PO Box 5000 • Brookings, SD 57006 • 800-333-0789 • Friends@SDPB.org

(February 20, continued)

SDPB2

9:30am (8:30 MT) Statehouse Press Briefings ▼

1:00 (Noon MT) Statehouse House ▼ and **Statehouse Senate** ▼

6:00 (5:00 MT) The Italian Americans La Famiglia (1890-1910)/ Becoming Americans (1910-1930)

8:00 (7:00 MT) Instruments of Change

9:00 (8:00 MT) PBS NewsHour

10:00 (9:00 MT) Nightly Business Report

10:30 (9:30 MT) Journal

11:00 (10:00 MT) The Italian Americans La Famiglia (1890-1910)/ Becoming Americans (1910-1930)

SATURDAY – FEBRUARY 21

SDPB1

6:00 (5:00 MT) Lawrence Welk

7:00 (6:00 MT) Doc Martin

8:00 (7:00 MT) Keeping Up Appearances

8:30 (7:30 MT) As Time Goes By

9:00 (8:00 MT) Last of the Summer Wine

9:30 (8:30 MT) Red Green Show

9:54 (8:54 MT) Star Gazers

10:00 (9:00 MT) No Cover, No Minimum ▼
Dakota Jazz Collective

11:00 (10:00 MT) Austin City Limits Gary Clark Jr./ Alabama Shakes

SDPB2

1:00 (Noon MT) The Italian Americans La Famiglia (1890-1910)/ Becoming Americans (1910-1930)

3:00 (2:00 MT) Instruments of Change

4:00 (3:00 MT) To the Contrary

4:30 (3:30 MT) Washington Week

5:00 (4:00 MT) PBS NewsHour Weekend

5:30 (4:30 MT) Charlie Rose The Week

6:00 (5:00 MT) Focus on Europe

6:30 (5:30 MT) Global 3000

7:00 (6:00 MT) Secrets of the Dead The World's Biggest Bomb/ The Man Who Saved the World

9:00 (8:00 MT) America Reframed Shell Shocked

10:00 (9:00 MT) POV 15 to Life: Kenneth's Story

11:00 (10:00 MT) Secrets of the Dead The World's Biggest Bomb/ The Man Who Saved the World

SUNDAY – FEBRUARY 22

SDPB1

1:00 (Noon MT) South Dakota Focus ▼
Domestic Violence

2:00 (1:00 MT) Statehouse ▼

3:00 (2:00 MT) Danube – Europe's Amazon Forest, Flood and Frost

4:00 (3:00 MT) Rick Steves' Europe

4:30 (3:30 MT) Nature Adventures ▼ *Wildlife of the Florida Keys*

5:00 (4:00 MT) Antiques Roadshow Bismarck I

6:00 (5:00 MT) Lawrence Welk

7:00 (6:00 MT) Great British Baking Show

8:00 (7:00 MT) Masterpiece Classic Downton Abbey Season 5 Part 8 of 9

9:30 (8:30 MT) Manor of Speaking

10:00 (9:00 MT) Masterpiece Mystery!

Grantchester Part 6 of 6

11:00 (10:00 MT) Globe Trekker Pacific Islands: Fiji, Vanuatu & Solomon

Midnight (11:00 MT) Washington Week

SDPB2

2:00 (1:00 MT) Great Performances at the Met Carmen

5:00 (4:00 MT) PBS NewsHour Weekend

5:30 (4:30 MT) Dakota Life

6:00 (5:00 MT) Great Conversations Andrew Ross Sorkin & Bethany MacLear

7:00 (6:00 MT) Nature Owl Power

8:00 (7:00 MT) Shakespeare Uncovered

Othello with David Harewood

9:00 (8:00 MT) In Search of Shakespeare The Lost Years

10:00 (9:00 MT) Shakespeare Uncovered

Richard II with Derek Jacobi

11:00 (10:00 MT) Nature Owl Power

Midnight (11:00 MT) Shakespeare Uncovered
Othello with David Harewood

MONDAY – FEBRUARY 23

SDPB1

6:00 (5:00 MT) PBS NewsHour

7:00 (6:00 MT) Antiques Roadshow

Bismarck II / San Diego III

9:00 (8:00 MT) Independent Lens Possum

Lodge Provincial Park

10:30 (9:30 MT) BBC World News

11:00 (10:00 MT) Charlie Rose

Midnight (11:00 MT) Tavis Smiley

SDPB2

6:00 (5:00 MT) American Masters Sister Rosetta Tharpe: The Godmother of Rock & Roll



In **Nature** *The Last Orangutan Eden*, ecologist Chris Morgan travels to the jungles of Northern Sumatra to document the efforts to save its wild orangutan population, which is quickly dwindling due to deforestation. Advanced cameras follow the orangs throughout the canopy to provide an intimate, clear picture of how these arboreal apes spend their days and nights and interact with one another.

SDPB1: Wednesday, Feb. 25, 7pm (6 MT)

7:00 (6:00 MT) **American Masters** *August Wilson: The Ground on Which I Stand*

(February 23, continued)

8:30 (7:30 MT) **Film School Shorts** *Strange Bedfellows*

9:00 (8:00 MT) **PBS NewsHour**

10:00 (9:00 MT) **Nightly Business Report**

10:30 (9:30 MT) **Journal**

11:00 (10:00 MT) **American Masters** *Sister Rosetta Tharpe: The Godmother of Rock & Roll*

Midnight (11:00 MT) **American Masters** *August Wilson: The Ground on Which I Stand*

TUESDAY – FEBRUARY 24

SDPB1

6:00 (5:00 MT) **PBS NewsHour**

7:00 (6:00 MT) **Genealogy Roadshow** *Best of Genealogy Roadshow*

8:00 (7:00 MT) **The Italian Americans** *Loyal Americans (1930-1945)/ The American Dream (1945-present)*

10:00 (9:00 MT) **Keeping Up Appearances**

10:30 (9:30 MT) **BBC World News**

11:00 (10:00 MT) **Charlie Rose**

Midnight (11:00 MT) **Tavis Smiley**

SDPB2

2:00 (1:00 MT) **Statehouse House** and **Statehouse Senate**

6:00 (5:00 MT) **Independent Lens** *Spies of Mississippi*

7:00 (6:00 MT) **America Reframed** *A Will for the Woods*

9:00 (8:00 MT) **PBS NewsHour**

10:00 (9:00 MT) **Nightly Business Report**

10:30 (9:30 MT) **Journal**

11:00 (10:00 MT) **America Reframed** *A Will for the Woods*

WEDNESDAY – FEBRUARY 25

SDPB 1

6:00 (5:00 MT) **PBS NewsHour**

7:00 (6:00 MT) **Nature** *The Last Orangutan Eden*

8:00 (7:00 MT) **NOVA** *Hagia Sophia – Istanbul's Ancient Mystery*

9:00 (8:00 MT) **Earth a New Wild** *Water*

10:00 (9:00 MT) **Last of the Summer Wine**

10:30 (9:30 MT) **BBC World News**

11:00 (10:00 MT) **Charlie Rose**

Midnight (11:00 MT) **Tavis Smiley**

SDPB2

2:00 (1:00 MT) **Statehouse House** and **Statehouse Senate**

6:00 (5:00 MT) **Faith in the Big House**

7:00 (6:00 MT) **Independent Lens** *American Denial*

8:00 (7:00 MT) **Black/White & Brown: Brown Versus the Board of Education**

9:00 (8:00 MT) **PBS NewsHour**

10:00 (9:00 MT) **Nightly Business Report**

10:30 (9:30 MT) **Journal**

11:00 (10:00 MT) **Faith in the Big House**

Midnight (11:00 MT) **Independent Lens** *American Denial*

THURSDAY – FEBRUARY 26

SDPB1

6:00 (5:00 MT) **PBS NewsHour**

7:00 (6:00 MT) **On Call**

8:00 (7:00 MT) **Temples of Justice**

9:00 (8:00 MT) **Doc Martin**

9:54 (8:54 MT) **Star Gazers**



Photo: Schomburg Center for Research in Black Culture, NY Public Library, Astor, Lenox and Tilden Foundations

On May 17, 1954, the U.S. Supreme Court issued its ruling in the case of *Brown vs. the Board of Education of Topeka, Kansas*. This momentous Supreme Court decision focused national attention on the practice of maintaining racially segregated public schools. The documentary presents the stories of the individuals, events and circumstances in **Black/White & Brown** *Brown Versus the Board of Education of Topeka*.

SDPB2: Wednesday, Feb. 25, 8pm (7 MT)

10:00 (9:00 MT) **As Time Goes By**

10:30 (9:30 MT) **BBC World News**

11:00 (10:00 MT) **Charlie Rose**

Midnight (11:00 MT) **Tavis Smiley**

SDPB2

2:00 (1:00 MT) **Statehouse House** and **Statehouse Senate**

6:00 (5:00 MT) **NOVA** *Hagia Sophia – Istanbul's Ancient Mystery*

7:00 (6:00 MT) **Earth a New Wild** *Water*

8:00 (7:00 MT) **America by the Numbers** *Pass or Fail in Cambodia Town/ Politics of the New South*

9:00 (8:00 MT) **PBS NewsHour**

10:00 (9:00 MT) **Nightly Business Report**

10:30 (9:30 MT) **Journal**

11:00 (10:00 MT) **NOVA** *Hagia Sophia – Istanbul's Ancient Mystery*

Midnight (11:00 MT) **Earth a New Wild** *Water*

FRIDAY – FEBRUARY 27

SDPB1

6:00 (5:00 MT) **PBS NewsHour**

7:00 (6:00 MT) **Washington Week**

7:30 (6:30 MT) **Charlie Rose** *The Week*

8:00 (7:00 MT) **McLaughlin Group**

8:30 (7:30 MT) **Market to Market**

9:00 (8:00 MT) **Statehouse**

10:00 (9:00 MT) **Great Performances** *La Dolce Vita: The Music of Italian Cinema*

11:30 (10:30 MT) **Games of the North**

Midnight (11:00 MT) **Tavis Smiley**

SDPB2

9:30am (8:30 MT) **Statehouse Press Briefings**

1:00 (Noon MT) **Statehouse House** and **Statehouse Senate**

6:00 (5:00 MT) **The Italian Americans** *Loyal Americans (1930-1945)/ The American Dream (1945-present)*

8:00 (7:00 MT) **Queen of Swing**

9:00 (8:00 MT) **PBS NewsHour**

10:00 (9:00 MT) **Nightly Business Report**

10:30 (9:30 MT) **Journal**

11:00 (10:00 MT) **The Italian Americans** *Loyal Americans (1930-1945)/ The American Dream (1945-present)*

SATURDAY – FEBRUARY 28

SDPB1

9:30am (8:30 MT) **Sewing with Nancy** *Sew Simple with Rectangles & Squares*

11:00am (10 MT) **Dr. Christiane Northrup** *Glorious Women Never Age*

12:30 (11:30 MT) **Don't Worry, Retire Happy with Tom Hegna**

2:00 (1:00 MT) **Suze Orman's Financial Solutions for You**

4:00 (3:00 MT) **South Dakota High School Wrestling Championships** *Class A*

10:00 (9:00 MT) **Motown 25** *My Music*

SDPB2

1:00 (Noon MT) **The Italian Americans** *Loyal Americans (1930-1945)/ The American Dream (1945-present)*

3:00 (2:00 MT) **Queen of Swing**

4:00 (3:00 MT) **To the Contrary**

4:30 (3:30 MT) **Washington Week**

5:00 (4:00 MT) **South Dakota High School Wrestling Championships** *Class B*

11:00 (10:00 MT) **Secrets of the Dead** *Bugging Hitler's Soldiers*



**DINO-
ROARS!**

Great Plains Zoo
Sioux Falls, SD

OPENING FEBRUARY 3, 2015

19 LIFELIKE DINOSAURS!



SDPB Opens the Door to Statehouse

(continued from page 5)

underneath a Capitol staircase.

“In 2014, we created more than 600 stories for **Statehouse**,” Hetland says, “Enough for every newscast throughout every legislative day. We expect to do as much this year, with a good mix of interviews and viewpoints.”

Nate Wek, the network’s Digital Content Development Specialist, will blog on top issues and examine the impact of legislative action.

Meanwhile, as the day wears on, camera operators move from the committee rooms to the House and Senate floor sessions, which air daily on the SDPB2 channel. Rissler reviews recorded footage from committee meetings and the House and Senate floor sessions for possible inclusion in the weekly one-hour **Statehouse** television program. In the Television operations center in Vermillion, two to three staffers make sure the live House and recorded Senate floor sessions are airing and recording properly, as well as generating the on-air graphics that make the action easier to follow.

“For the weekly wrap-up,” Rissler says, “we’re looking at issues that

have a significant impact on the state. We don’t have to edit everything to a sound bite. We can let legislators fully explain issues.”

After the Legislature adjourns, two to three online staff work into the night preparing audio for the **Statehouse** archives. “The technology only allows us to record an hour at a time,” says Kent Osborne, Director of Education & Online. “So if a meeting lasts longer, we piece it together.” In addition, online “trims the ends” in case a meeting starts late, or recording continues past the end of a meeting.

Finally, as the day comes to a close, Rissler and Hetland study the meeting schedule and making assignments for the next Legislative Day.

“Then, we do it all over again,” Hetland says.



Andrew Bork tracks action in the South Dakota House.



View of the South Dakota Senate from the visitors gallery.



Gov. Dennis Daugaard has started his second term in office.



Tune into Democracy

SDPB.org/Statehouse



Statehouse

one-hour wrapup

SDPB1 TV: Fridays, 9pm (8 MT)

SDPB1 TV: Sundays, 2pm (1 MT)

Statehouse House & Statehouse Senate

SDPB2 TV: Afternoons during session

(see listings)

Statehouse Press Briefings

SDPB2 TV: Last Day of Legislative Week

9:30am (8:30 MT) (see listings)

SDPB Radio

Reports & updates throughout the day

SDPB Online

See & hear it all at

SDPB.org/Statehouse

- Audio of all public committee meetings and floor sessions
- Daily updates on hearing plans
- Follow progress of specific bills
- Access TV and Radio coverage
- Floor debates live
- Archives of legislative action

Checking the Art Beat of South Dakota

Art is the focus of **Dakota Life** in February with a look at national award-winning wildlife artists from rural Union County, the latest on internationally famed Termesphere artist Dick Termes of Spearfish, and a Sturgis man who uses his artistic talent to make firearms unique.

The February episode premieres on Thursday, Feb. 5, at 8pm (7 MT), with an encore on Sunday, Feb. 8, at 1pm (Noon MT).

The monthly half-hour program, the signature features magazine for SDPB Television, looks at the fascinating people, places and things that make up our great state. Here are some of the highlights for February:

Art of the Family – Adam Grimm and his daughter Madison Grimm are both award-winning artists. Last year, Madison won the Jr. Duck Stamp Contest and is the youngest artist to ever win. Adam has won the Federal Duck Stamp contest twice. He is the only artist to win the contest twice and was the youngest adult winner.

The Art of Firearms – Jesse Kaufman of Sturgis makes weapons unique. He creates one-of-a-kind firearms and knives by checkering and engraving the weapons.

Art in Dimensions – Dick Termes uses “Termespheres” to create three-dimensional art. Over a career that

has spanned half a century, he has gained an international following. The Black Hills man was inducted into the South Dakota Hall of Fame last year.

Dakota Life airs several times

during the month to give viewers a chance to tune in. Past episodes are available at SDPB.org/DakotaLife. The program airs statewide on SDPB and nationwide on RFD-TV.



Dick Termes creates a Termesphere in his rural Black Hills studio



Adam Grimm and daughter Madison show off their prize-winning art.



Jesse Kaufman turns a firearm into art.

SDPB Explores Education, Juvenile Justice, Domestic Violence

South Dakota Focus takes aim at education, the justice system, and domestic violence.

SDPB Television’s public affairs program, now in its 20th year, premieres on Thursday nights on SDPB1 at 8pm (7 MT), and is usually followed by an encore on the following Sunday at 1pm (Noon MT).

Coming episodes include:

Feb. 12 – Criminal Justice Reform – How have last year’s new laws affected the judicial system? This year state lawmakers are expected to look at reforms for the juvenile justice system. What changes are expected from Pierre?

Feb. 19 – Domestic Violence – The

issue has taken center stage in the media across America. It’s a problem in South Dakota, too. What help is available and what is needed to recognize and help victims?

Tune into **South Dakota Focus** on demand at SDPB.org/SDFocus.

RADIO	WEEKDAYS	SATURDAYS	SUNDAYS
5am / 4 MT		BBC World Service Overnight.	BBC World Service Overnight.
5:30/4:30 MT			
6am / 5 MT		The People's Pharmacy Health news & alternatives.	TED Radio Hour Ideas, inventions and original thinking.
6:30/5:30 MT	Morning Edition NPR news. Star Date 9am (8 MT)		
7am / 6 MT			
7:30/6:30 MT		Weekend Edition News and features from NPR.	Weekend Edition News and features from NPR.
8am / 7 MT			
8:30/7:30 MT			
9am / 8 MT	Morning Classics with Owen DeJong ▼ "South Dakota Season Ticket" w/ local performance on Wed. "Request Day" on Fridays.	The Best of Car Talk Real advice, zany hosts.	Krista Tippett on Being Philosophical discussions.
9:30/8:30 MT		Wait, Wait ... Don't Tell Me Trivia, humor from week's news.	Travel with Rick Steves America's top travel expert.
10am / 9 MT		Radiolab Science and life.	America's Test Kitchen Recipes, tips, and information.
10:30/9:30 MT			
11am / 10 MT			
11:30/10:30MT	Dakota Midday ▼ "Computer Guys" & "Innovation" on Fridays.	This American Life Portraits of all kinds of Americans.	A Prairie Home Companion Garrison Keillor with music, humor, skits and more.
Noon / 11 MT			
12:30/11:30MT	Here & Now , Mondays-Thursdays News, features, conversations and more from NPR.	TED Radio Hour Ideas, inventions and original thinking.	
1pm / Noon MT		Wits America's best contemporary music and comedy.	SymphonyCast Top orchestras.
1:30/12:30 MT	Science Friday on Fridays.	The Dinner Party Download Pop culture, food & conversation.	
2pm / 1 MT			
2:30/1:30 MT	PRI's The World Global news.	All Things Considered NPR	All Things Considered NPR
3pm / 2 MT			
3:30/2:30 MT	All Things Considered NPR National Native News 4:30 (3:30 MT)	A Prairie Home Companion Garrison Keillor with music, humor, skits and more.	On the Media News analysis and journalistic journeys. This American Life Portraits of all kinds of Americans.
4pm / 3 MT			
4:30/3:30 MT	Marketplace	American Routes Roots music, stories behind sounds/ artists.	Ask Me Another Test your wits in this lively quiz show.
5pm / 4 MT		Rock Garden Tour ▼ Last Sat. of month, 8pm (7 MT)	Big Band Spotlight with Karl Gehrke ▼ Music of '30s & '40s.
5:30/4:30 MT	Jazz Nightly with Jim Clark ▼ "Uncle Jimmo" features jazz artists & styles, as well as South Dakota Jazz Stars.	On Record with Matt Weesner ▼ Adult alternative music.	Jazz Night in America
6pm / 5 MT			Selected Shorts Readings of fiction by top actors.
6:30/5:30 MT		No Cover, No Minimum Radio ▼ South Dakota performance.	The Moth Radio Hour Compelling real-life stories.
7pm / 6 MT		Blue Dimensions Blues music & artists explored.	Fresh Air Weekend Best features from the week.
7:30/6:30 MT			BBC World Service Overnight.
8pm / 7 MT	World Café Music from around the globe.		
8:30/7:30 MT			
9pm / 8 MT			
9:30/8:30 MT			
10pm / 9 MT			
10:30/9:30 MT			
10:30/9:30 MT			
11pm / 10 MT			
11:30/10:30MT			
Mid. / 11 MT			
12:30/11:30MT			
1am / Mid. MT			

Test Kitchen Stirs Up Appetites on Radio

America's Test Kitchen Radio with host Chris Kimball focuses on the issues that are important to the everyday cook. The weekly one-hour program debuts on SDPB Radio on Sunday, Feb. 1, at 11am (10 MT).

The team fills the program with clear, practical information, without the gourmet fuss. The hour is all about insights, tips and techniques that illuminate the truth about real home cooking. There will be some mystery, too, like why bad things happen to good recipes and the science behind good results.

Food has become a national obsession and there are a multitude

of programs, magazines, books and blogs ranging from pure entertainment to celebrity showcases. Yet they aren't much help to the everyday cook. That's why **America's Test Kitchen** wants to find a better way to make a food program for radio.

Each week, Kimball introduces listeners to cooks and food experts from the Test Kitchen, and people who come at food and cooking from unique and useful perspectives.

In addition, listeners have the chance to call in with questions and comments.



Photo © Kate Kelly

Chris Kimball (red apron) leads a group of experts as they explore recipes and food.

High School Achievement

Talented South Dakota high school students compete for statewide honors in the One-Act Play, Gymnastics and Wrestling competitions in February.

SDPB.org covers all the events with photos, stats, information and more. On Feb. 28, SDPB.org and SDPB Television will feature the top matches for Class B and Class A Wrestling and, on March 14, SDPB Television will present a two-hour highlights program from the Class A and AA Gymnastics Finals.

Check the Championship Coverage box for details.

High School coverage is offered in partnership with the South Dakota High School Activities Association.

Major sponsors of high school activities coverage include Dacotah Bank and Midcontinent Communications. Additional sponsors include Farmers Union Insurance, Independent Insurance Agents of South Dakota and SDN Communications. Also, Sanford Health, Touchstone Energy Cooperatives and Spearfish GMC Cadillac. Also, Dakota Plains New Holland; Delta Dental of South Dakota; Fischer, Rounds & Associates; South Dakota State University; and Vance Thompson Vision. And South Dakota Crop Improvement Association, Subway and Taco John's.



Championship Coverage

One-Act Play Festival

SDPB.org – Info, Photos & Awards
Feb. 5-7, from O’Gorman High School in Sioux Falls

High School Class B Wrestling

Live from Rapid City
SDPB.org – Info, Photos & Awards, Feb. 27-28
SDPB2 Television & SDPB.org – Top matches
Saturday, Feb. 28, 5-11pm (4-10 MT)

High School Class A Wrestling

Live from from Sioux Falls
SDPB.org – Info, Photos & Awards, Feb. 27-28
SDPB1 Television & SDPB Online –Top matches
Saturday, Feb. 28, 4-10pm (3-9 MT)

Gymnastics

SDPB.org – Info, Photos & Awards
Feb. 13-14 from Watertown
SDPB1 Television – 2-hour highlights program
Saturday, March 14, 3:30pm (2:30 MT)



SDPB Boards Meet in February

The SDPB boards will hold virtual meetings on Friday, Feb. 13. Board meetings are open to the public.

The network’s governing board, the South Dakota Educational Telecommunications Board of Directors, will meet at 9:30am (8:30 MT).

The Friends of SDPB Board of Directors will meet at 10:30am (9:30 MT). Call 800-333-0789 for details and virtual meeting sites.

SDPB Presents at Math, Science Conference

SDPB’s Steven “Science Steve” Rokusek will be one of the presenters at the 23rd annual SDSTA/SDCTM Joint Conference Feb. 5-7, 2015 in Huron.



Science Steve offers scientific demos online at SDPB.org/Learn.

Rokusek will lead two sessions:

- Engaging Science Activities: The Senses – Participants will learn about science activities that will keep children entertained and educated. The session will include sight, balance and skin sensitivity activities.

- Hands-on Science and Math Activities – The session looks at educational science and math activities including games focused on recycling and ecosystems.

SDPB’s booth will include examples of the network’s extensive educational resources at SDPB.org/Learn. They include dissection information, demonstrations, national show materials and more.

The Visionary Society

The SDPB Visionary Society offers annual donors of \$1,000 or more unique opportunities and a leadership role in supporting South Dakota's network: SDPB.

Cornerstone Club

(contributors of \$25,000 or more)

Brookings

Van D. & Barbara B. Fishback

Pierre

South Dakota Department of Tourism
Washington, D.C.

Corporation for Public Broadcasting

Broadcast Club

(contributors of \$10,000 to \$9,999)

Pierre

South Dakota Arts Council

South Dakota Bar Foundation

Rapid City

John T. Vucurevich Foundation

Tower Club

(contributors of \$5,000 to \$9,999)

Aberdeen

Northern State University

Brookings

South Dakota Humanities Council

Huron

Nordby Family Foundation

Sioux Falls

Dakota Sky

Harold's Photo Experts

Tyndall

Hoch Drug Foundation

San Mateo, CA

Lawrence Bowman

Family Foundation

Spotlight Club

(contributors of \$2,500 to \$4,999)

Aberdeen

Sisters of Presentation

Brookings

Anonymous (1)

Rapid City

Jason & Betsy Groves

Sandra J. Honke, MD

Michelle Lamberty

Shirley Sackman

Roscoe

John R. Beyers, LaVerne Fenner

& Alan Stuckle

Sioux Falls

Mary McQuillen

Spearfish

Mike & Liz Manning

Washington, D.C.

WETA

Naples, FL

Anonymous (1)

Executive Producers

(contributors of \$1,000 to \$2,499)

Aberdeen

Limerick Lounge

Gail Malsom

Drs. James Smith & Connie Ruhl-

Smith

Anonymous (1)

Avon

Rev. Daniel F. Brandt

Bath

Jan & Gordon Locken

Beresford

Gini Finger

Bobbie J. Gudmestad-Maher

Brandon

Barbara Lynch

Brookings

Lyle Bowes

David & Marcia Chicoine

Sally Damm

Don & Carol Evenson

Joanie & Rick Holm

Mildred K. Huggins

Tom & Jeanne Manzer

Harvey & Midge Mills

James & Dorothy Morgan

Bernadette & Stewart Olson

Duane & Phyllis Sander

Richard & LaRayne Wahlstrom

Chancellor

Chuck & Marcia Hendrickson

Custer

Wanda & Jon Dahlstrom

Elnor Hartpence Estate

Deadwood

Peggy Norris

Florence

Ms. Victoria Kingslien

Fort Pierre

Wayne & Carol Carney

Mortenson Law Offices

Groton

Dick Ruden

Anonymous (1)

Hartford

Kay Bahnson

Hermosa

Anonymous (1)

Hot Springs

Ratloff Law Office

Glen & Deanne Reaser

Howard

Vincent & Mary Protsch

Norman Andenas & Cecelia

Wittmayer

Huron

Jeanne L. Bauder

Marilyn J. Hoyt

Lake Preston

Christena Beck

Lead

Dan Leikvold

Lily

Barb & Frank James

Milbank

Max Gonzenbach

Tom Pagel

Mitchell

Gladys Baldwin, Baldwin Rentals

Norma Cameron

Dale & Marla Holm

Charlys Randall

Mobridge

Steven Jacobs

Pierre

Ann Fingerson

Cash & Julie R. Hogen

Russell E. Nash

Bob & Carolyn Riter

Tessier Family Foundation, Inc.

Dan & Janelle Toman

Anonymous (1)

Presho

Yvonne Taylor

Rapid City

Duane & Karen Abata

James Anderson & Steve Fossum

Dr. & Mrs. John Barlow

David & Mary Boyer

Ruth Brennan

Harry & Barbara Christianson

Fredric R. & Luella Cozad

Mike & Kathy DeMersseman

Randal & Rebecca Fisher

James & Kathleen Hastings

Dr. Briana & Ron Hill

William Howard

Kamalynn Hurd & family

Dr. Roger & Janice Knutsen

Suzanne Koehler

Drs. Ashok & Kaushalya Kumar

L. B. Lane Family Foundation

Richard & Karen Latchie

Ted & Mary Linda McBride

Kelli McCormick

Erma Fiedler Mikkelsen

Barry & Kathy Muxen

Joan & Donald Perdue

Gregg Peterman

Perry & Mely Rahn

Susan Rodriguez

Mr. & Mrs. Brian Smith

Jon & Jean Stenberg

Steven & Nancy Stephenson

Dr. Willis & Patricia Sutliff

Brian Tschida

Anonymous (2)

Sioux Falls

Loren & Mavis Amundson

Anesthesiology Associates, Inc.

Jack & Linda Barker

Dr. James Barker

Donna Bauer

Greg Blomberg

Richard Blundell

Lilo Bucknell

Eleanor & Henry Carlson

Joan & Phil Clark

Paul & Mary Ellen Connelly

Bill & Rosemary Draeger

Larry & Suzanne Fuller

Evelyn Griesse

Emelie Haigh

Susan & Ken Hasseler

Boyd & Dody Hopkins

Ryan & Stacy Howlett

Dorothy L. Johnson

Jerri Johnson & Robert Gripp

Paula Johnson

Dan & Arlene Kirby

De & Dave Knudson

David Larsen & Karen Heiling

Michael & Beth MacDonald

David & Linda Marquardt

Nancy McCahren

Judith & Mark Meierhenry

Randy Meister

Gayle & Angie Nelson

Rod & Ruth Parry

Tate Profilet & Mary DeJong

Ruth Schmidt

Karen E. Schreier & Tim

Dougherty

Mark & Peggy Shlanta

Sioux Falls Tower &

Communications

South Dakota Rock 'n' Roll Music

Association

Cheryl & William Taylor

David & Mary Tidwell

Anonymous (4)

Sisseton

Marlin & Cheryl Jenner

Spearfish

Greg & Ellie Cooch

Gene & Yvonne Ficek

Robert & Linda Meyer

Jo Nugent

Sue White & Larry Landis

Leonard Wormstadt Memorial

Sturgis

Dr. Carl Johnson

Tea

Loren & Julie Overgaard

Tyndall

Steve & Brenda Koenig

Utica

Myles & Valary Tieszen

Vermillion

James W. & Collette Abbott

Senator Tim. P & Barbara Johnson

Dr. Elizabeth R. Moore, Westin

and Weber

Ted & Karen Muenster

Tim, Ilmira & Kamil Schorn

Gary & Jan Small

Julie Stewart & Kevin Bliss

Douglas & Susan Tuve

Anonymous (1)

Viborg

Sorlien Electric, Inc.

Watertown

First PREMIER Bank/PREMIER

Bankcard

Brad & Carol Johnson

Jan & Mike Mullin

Waneen Polly

Reliabank Dakota

Sharp family

Webster

Joan S. Trygstad & M. Michael

Carpenter

Wessington Springs

Tom & Kathy Dean

Anonymous (1)

White

Harriet & Harvey Svec

Yankton

Mardell Antes

Benedictine Sisters, Sacred Heart

Monastery

Marv & Karin Ehlers

Nancy & John Sternquist

Norman & Kathleen West

Washington, D.C.

Tom & Linda Daschle

Akron, IA

Mary Lucken

Alta, IA

Ted & Ruth Lindeman

Fairmont, MN

Paul & Kay Schellpeper

Minneapolis, MN

Brad & Paula Carlson

Members of the SDPB Heritage Circle have made a commitment to the future by providing for SDPB through an estate gift.

The Heritage Circle

Brookings

Louise Guild Estate

Beverly J. Poole Estate

Charles "Scotty" Roberts Estate

Limen Smythe Estate

Chamberlain

</

Corporate Support

Our corporate partners continue to support the excellent Television and Radio programming you have come to expect and love from SDPB.

Abourezk Law Firm	Deadwood History (Adams Museum & House/Days of '76/ Adams Research & Cultural Center)	Jerry Sanftner Insurance	Rapid City Sculpture Project	South Dakotans for the Arts
Acupuncture 4 Health	Delta Dental of South Dakota	Jolly Lane Greenhouse	Regional Health Physical Therapy	Southeastern Dental Center – Dr. Daniel Goede
All Souls Church	DeMersseman Jensen Tellinghuisen & Huffman, LLP	Jorgensen Log Homes, Inc. (The) Journey Museum	Regional Heart Doctors	Spearfish GMC Cadillac
ArtForms Gallery	East River Electric Power Cooperative	Keller Williams Realty – Jeff Nelson	Reptile Gardens	St. Olaf Orchestra
Arts Rapid City	Emmanuel Episcopal Church	Koch Hazard Architects	Rug & Relic	Subway
Associated General Contractors of South Dakota	Farmers Union Insurance Companies	Landscape Garden Centers	Sanford Health	Sunset Pawn, Inc.
Augustana College	First Bank and Trust	Mr. James Leach, Attorney at Law	SDN Communications	Dr. James Szana
BankWest	First Dakota National Bank	LIW Pageant Society	Sioux Empire Farmers Market	Taco John's
Bartlett & West	Fischer, Rounds & Associates	Madison Farmers Elevator	Sioux Falls Area Community Foundation	Touchstone Energy
Bay Leaf Café, Inc.	Flooring America	Mahlander's	Sioux Falls Seminary	Turbak Law Office, PC
Black Hills Area Community Foundation	Four Bands Community Fund	Media One Advertising	Siouxland Museums	University of Sioux Falls
Black Hills Federal Credit Union	Four Seasons Fabric	Midcontinent Communications	South Dakota Affiliate of the American College of Nurse Midwives	University of South Dakota
Black Hills Film Festival	Gene Hufford Agency	Missouri River Energy Services	South Dakota Agricultural Heritage Museum	University of South Dakota Foundation
Black Hills Knowledge	Great Plains Zoo	Mount Marty College	South Dakota Art Museum	Valiant Vineyards
Black Hills Playhouse	Gunn Productions	National Public Media	South Dakota Arts Council	Vance Thompson Vision
Black Hills Regional Eye Institute	Chet Groseclose, Prof. LLC	National Show	South Dakota Bar Foundation	Viken & Riggins Law Firm
Black Hills State University	Hill City Arts Council	Northern State University	South Dakota Crop Improvement Association	Warne Chemical & Equipment Company
Black Hills Symphony	Hill City Mercantile	NorthWestern Energy	South Dakota Film Festival	Washington Pavilion
Brookings Farmers Market	Home Federal Bank	Ophthalmology Associates	South Dakota Humanities Council	Weigum's Great Plains Landscape Arboretum
Bush Foundation	Paul Horsted, Dakota Photographic, LLC	Ophthalmology LTD	South Dakota Magazine	West River Dermatology Clinic – Dr. Roger Knutsen
Capital Services	Horton Incorporated	Orlando Chamber Soloists	South Dakota Space Grant Consortium	Westhills Village Retirement Community
(The) Center for Western Studies	Howes Oil	Plain Green Conference	South Dakota State Historical Society	Wilson, Olson & Nash, PC - Attorneys at Law
Children's Museum of South Dakota	Hy-Vee Food Stores	Plastic Surgery Associates of SD	South Dakota State University	World Bicycle Relief
CO-OP Architecture	IFM Capital Advisors	POET	South Dakota State University – Woodbine Productions	
Credit Union Association of the Dakotas	Independent Insurance Agents of SD	Presentation College	South Dakota Symphony	
Dacotah Bank	Ingalls Homestead	Puetz Corporation		
Dakota Plains New Holland	Interim HealthCare	Quilters Headquarters		
Daktronics		Rapid City Arts Council		
Davenport Evans Lawyers		Rapid City Regional Hospital		

Join us in telling South Dakota's stories.
Be an underwriter.

Contact the Corporate Development Manager nearest you.

Ned Gavlick, East River
800-333-0789

Terrie Koehne, West River
800-456-1266



Volume 46 No. 2

Friends of SDPB Office

PO Box 5000
Brookings, SD 57006
(605) 688-4191 or (800) 333-0789

Ryan Howlett, Friends CEO

(800) 456-0556

SDPB Administrative Office

PO Box 5000
Vermillion, SD 57069
(605) 677-5861 or (800) 456-0766

SDPB Home Page

<http://www.SDPB.org>
press@SDPB.org

SDPB Magazine & Promotion Staff

Ruth Bylander, Editor
Carol Robertson, Marketing Manager
Matti Smith, Marketing Manager
Amber Anders, Continuity Director
Dave Foote, Promotion Producer
Kortny Sterrett, Marketing Intern

Friends of SDPB Board

President Tim Dougherty, Sioux Falls
Vice President Daniel Leikvold, Lead
Treasurer Marcia Hendrickson, Chancellor
Secretary Nancy McCahren, Sioux Falls
Greg Blomberg, Sioux Falls
Wayne Carney, Fort Pierre
Malcom "Chap" Chapman, Rapid City
Harry W. Christianson, Rapid City
Laura Hofer, Sioux Falls
Rebecca Jirava, Brookings
Jeri Johnson, Sioux Falls
Julie M. Johnson, Aberdeen
Katrina Lehr-McKinney, Sioux Falls
Lizabeth Manning, Spearfish
Tom Manzer, Brookings
Thomas Pagel, Milbank
John Charles Sternquist, Yankton
Janelle Krause Toman, Pierre

South Dakota Educational Telecommunications Board

Mark Shlanta, Chair, Sioux Falls
Doyle Estes, Hill City
Kay Jorgensen, Spearfish
Rick Knobe, Sioux Falls
Julie Mathiesen, Sturgis
Gerry Schlenker, Canistota

Jack R. Warner, Regents, Pierre
Julie Overgaard, SDPB, Vermillion
David Zolnowsky, BIT, Pierre

SDPB Management Team

Julie Overgaard, Executive Director
Larry Rohrer, Director of Content
SeVern Ashes, Engineering Director
Bob Bosse, Television Director
Fritz Miller, Marketing Director
Kent Osborne, Online Director
Joe Tlustos, Radio Director

– South Dakota Public Broadcasting is a division of the South Dakota Bureau of Information and Telecommunications.

– Friends of SDPB is a 501(c)3 organization.

– SDPB Magazine is printed by Midstates Printing, Aberdeen, SD. Approximately 14,500 copies of the document were printed at an approximate cost of \$.36 per copy. SDPB Magazine (ISSN 1529-1596) is published and mailed monthly for \$10 per year for Friends of SDPB, 815 Medary, Brookings, SD 57006. Periodical postage paid at Brookings, SD, and additional mailing offices.

Postmaster: Send address changes to Friends of SDPB, Box 5000, Brookings, SD 57006. USPS 0764-400



Woodbine Productions Presents

Six-Time Tony® Award Winner

Audra McDonald

*Bringing THE BEST
OF BROADWAY to
Brookings!*

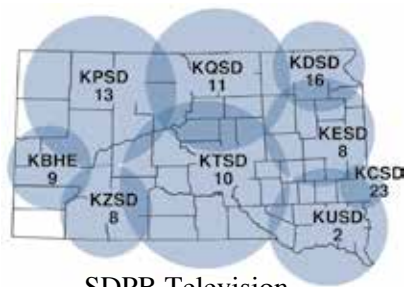
February 23, 2015

SDSU Performing
Arts Center • 7:30pm

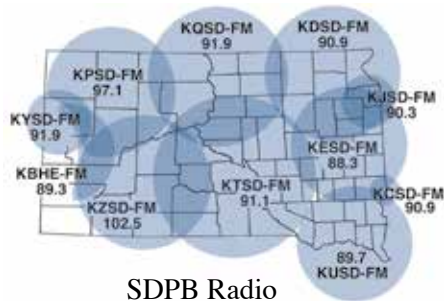
FOR TICKETS CALL:

SDSU Music Department
605-688-5188

Woodbine Productions is a project of the SDSU Foundation and the generosity of an anonymous donor. All ticket sales support Music Scholarships at South Dakota State University.



SDPB Television



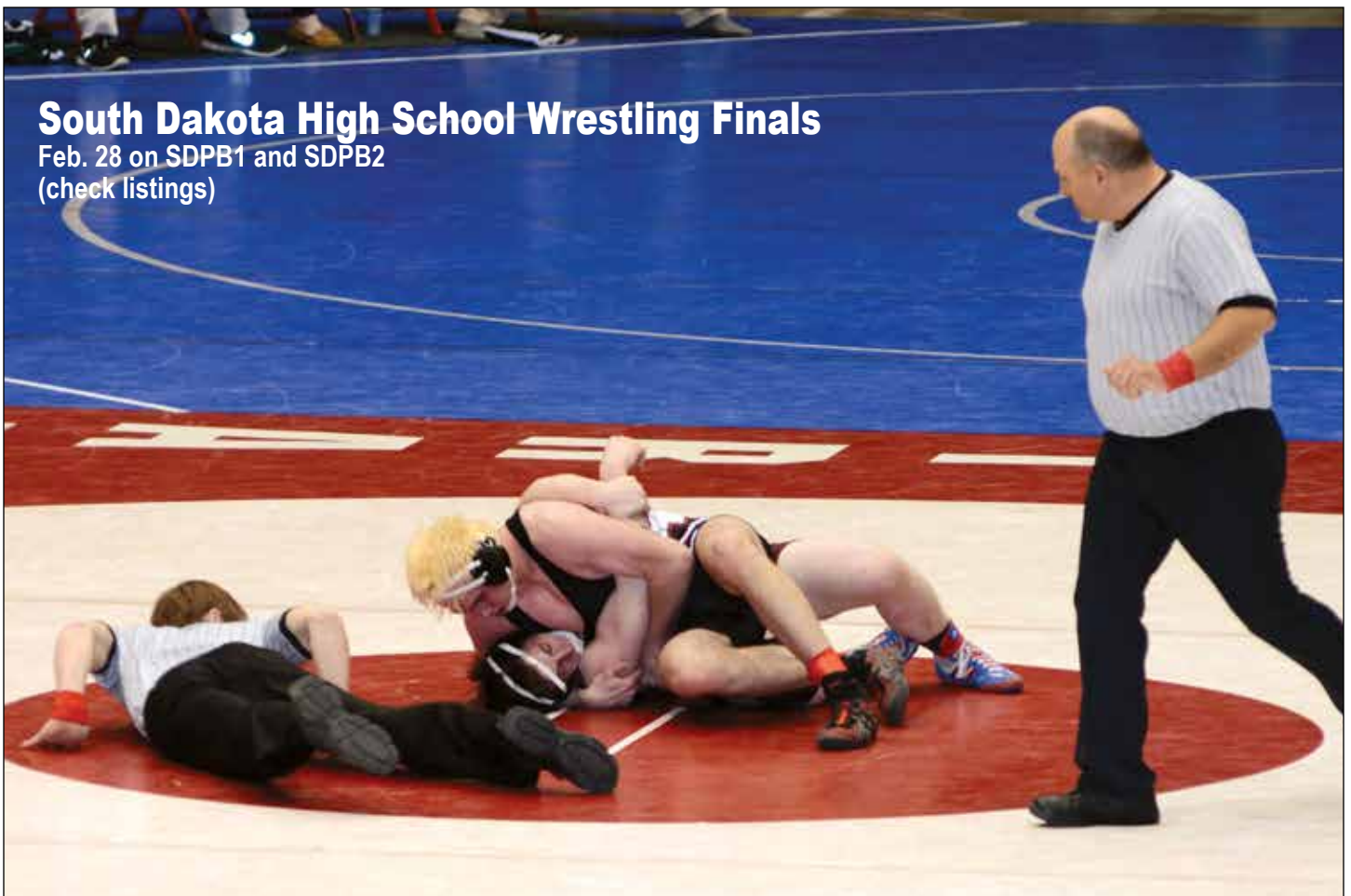
SDPB Radio

Live and on-demand audio and video at SDPB.org



The number on the top of your address is your membership expiration date. The number on the left is your identification. Please use for membership renewals. This will reduce our processing time and speed up your service.

Printed on Recycled Paper



South Dakota High School Wrestling Finals

Feb. 28 on SDPB1 and SDPB2
(check listings)