



# SDPB Magazine

February 2018

Photos: (above) Jorge Gonzalez, Wagner Community School; (right) Jackie Greger, Wagner Community School; (below) Genesis, Wagner Community School, and M.J. Adams.



**SAMSUNG**  
pay



 **Pay**

Pay with Your Phone



**Black Hills**  
FEDERAL CREDIT UNION

bhfcu.com  
800.482.2428

---

Now Open at 41<sup>st</sup> & Hawthorne  
Serving the Greater Sioux Falls Area



**#Mary VanHeuvelen Wheaton** Beautiful story! Dawne is an amazing wood crafter. She's being very humble in this video.

**#Sandy Pederson** Thank you Dawne and SDPB!



Find South Dakota Public Broadcasting here!

@SoDakPB on Facebook & Twitter

Flickr Gallery: flickr.com/photos/SDPB

## SDPB Interns Showcase South Dakota

Early this winter, SDPB Marketing Interns Krystal Schoenbauer and Kara Jo Brodsky went just north of Vermillion to interview local woodworker and teacher Dawne Michelle Olson. At Four Winds Boat Shop and Woodcraft, they captured the sights and sounds of Olson showing fledgling woodcrafters how to craft a children's sleigh.

Schoenbauer and Brodsky planned, filmed, produced and deployed the Four Winds Digital Short. Brodsky is a senior Communication Studies major at USD from Vermillion who is also active in Lambda Pi Eta, the Communications Studies Honor Society. "The most enjoyable part about putting together the piece was hearing the story of an awesome, local lady take a huge risk and follow her dream," says Brodsky. "I've known Dawne for years, but I didn't realize how much she put on the line to do something that no one expected. I loved seeing how much she, her passion, and her shop have

grown. The most challenging part was deciding which angle we wanted to take with the story. I'm so glad we got interviews with her children so we could show just how much they look up to their mom. They are so proud of her and I think that came across in the video."

Schoenbauer is a senior Media and Journalism major at USD from New Prague, MN. She is also involved with *Coyote News*, USD's Cross Media Council and Alpha Xi Delta Sorority. She's interned with SDPB for one year. "Not many interns are able to say they had an idea for a story and then were told they could go out and produce it," says Schoenbauer. "The most challenging part for any story is figuring out what direction you want your story to take. I knew before we even interviewed Dawne that I wanted to create a piece that showed South Dakotans how important it is for people to go out and follow their passions. Having the opportunity to sit down and talk



Left to right: SDPB staffers Amber Anders & Dave Foote and interns Kara Brodsky & Krystal Schoenbauer.

with Dawne was a very inspiring moment for me, and I wanted others to hear what she had to say and be inspired. When you watch the video and hear her speak, you can see how happy she is creating beautiful pieces of work, and teaching others."



Chef MJ Adams cooks Emmer Salad with students from Wagner Community School.

In the deep freeze of a South Dakota February, a young gardener’s fancy lightly turns to seed catalogs. Pallid and scurvy-prone, the Midwestern gardener often elapses the longest shortest month with cheek pressed to south-facing window, dreamily leafing through Burpee’s and longingly tapping radish pictures on SeedSaversExchange.org.

If plotting our plots helps pass the days until last frost, so too does the newest episode of **Savor Dakota**, SDPB’s locavore guide to South Dakota-grown food producers.

This month, **Savor Dakota** shines its growing lights on salads. Derived from the Latin “sal” for “salt,” from the pre-refrigeration era when vegetables were preserved, salad crosses cultures and takes infinite forms. A meal’s precursor or an entrée unto itself, South Dakota variations veer from iceberg scraps waylaid in a tsunami of ranch, to canned fruit and marshmallows clung rapturously in church-basement ambrosia, to the savory ensemble of couscous, avocado and arugula of a Thai Salmon Power Lunch at Vermillion’s Red Steakhouse.

Join **Savor Dakota** producer Melissa Hamersma Sievers and host MJ Adams as they venture to Mountain and Central time zones for all-you-can-eat trips from South Dakota’s salad makers in Aberdeen, Wagner, Rapid City and Sioux Falls.

### Pheasant Hospitality in Aberdeen

While many towns in South Dakota purport to be the state’s “Pheasant Capital,” Laura Ptacek of Aberdeen’s Convention and Visitor’s Bureau insists the Hub City is the one and only. Considering Aberdeen’s illustrious pheasant history, the title may be deserved. “We used to serve pheasant sandwiches to the troops during World War II, out the back door at the train depot,” says Ptacek. Today, hunters flying into Aberdeen Regional Airport on South Dakota’s opening weekend of pheasant hunting season are treated to pheasant salad sandwiches and hot coffee when they touch down on the tarmac. “We actually have the ladies from the World War II Pheasant Canteen help out every year,” says Ptacek. “They were daughters and granddaughters during that time. We keep that tradition alive by honoring what they did and serving pheasant sandwiches.”

The pheasant salad recipe used to fill the sandwiches also dates back to the World War II era. “Back then, they had to use what was plentiful,” says Ptacek. “Pheasants were definitely top of the list. And then things that were rationed: eggs, butter, salad dressings, carrots, celery and onions. That’s all

they had to provide. It’s a very well-known recipe.” Hank Shaw, a former chef who is now a full-time forager and writer, includes the recipe in his new book, *Pheasant, Quail, Cottontail: Upland Birds and Small Game from Field to Feast*. Today, area residents clean out their freezers to supply pheasant for the welcoming. Both slices of bread are buttered to help secure the fixings. “The pheasant salad is actually very well-received,” says Ptacek. “Hunters comment every year that when they fly in they look forward to that pheasant sandwich waiting for them at the airport. We’re giving them a taste of what they had back when, but with a different clientele. They had the troops, we have the hunters. We welcome them home.”

Pheasant sandwiches are an Aberdeen tradition.





Master Gardener Mary Trykoski talks lettuce with Chef MJ Adams.

### Let Us Celebrate in Rapid City

Mary Trykoski used to work 16-hour days in Washington D.C. Looking to fill her time after retiring in Rapid City, Trykoski followed up on an ad for Master Gardening training. “I had to do something, so I thought, ‘I like to grow things,’” says Trykoski. “I took the training for eight weeks and became certified after 50 hours of community service.” Now she’s president of the Pennington County Master Gardeners, whose members train with SDSU professors to gain certification. The group conducts community outreach at the Farmer’s Market and through “Gardening in the Black Hills” classes to offer best gardening practices in West River’s higher elevations.

For those with the least green of thumbs, Trykoski offers sage advice on the ease of propagating lettuce. “It’s like growing grass,” says Trykoski. “There’s no big science to growing lettuce. Some people make a big deal out of it, but really, put the seeds down, sprinkle it with a little bit of soil, spray it every other day and keep it moist until it starts coming up.”

Trykoski grows lettuce from April through November and prefers bib varieties. “They are nice and juicy and the leaves are kind of firm.” She adds homegrown sage, oregano, dill or thyme. “They add just a little bit of flavor. If I want something really heavy, I throw in walnuts or croutons.” She suggests not planting in full sun. “Lettuce grows better in a semi-shade condition because we get really hot weather in July and August and it will wilt during the day. Semi-arid and eastern gardens are really great for lettuce.”

### Food for Thought at Wagner Community School

What’s for lunch at Wagner Community School? How about homegrown cucumbers, fresh tilapia and local bananas? Thanks to an aquaponics system, a year-round geodesic dome greenhouse, and the passionate support of teachers, staff and students, Wagner Community School has incorporated food production into both its school lunch menu and curriculum. Known as “the Growing Dome,” the greenhouse was built by Wagner middle school students in the Job’s for America’s Graduates (JAG) program. The kids were assisted by Greg Fripp, founder of Omaha’s Whispering Roots, an organization that builds contained, soilless growing systems and promotes science, technology, engineering and math (STEM) education via food science and production. “We use the produce in the lunch line, and in our cooking classes we learn how to make salsa, potato salad, stir fry – all from the vegetables the kids grew and picked themselves,” says Carrie Tucek, who is both the high school science teacher and coordinator for the PreK-12 Outdoor Science program. “What we want to do is get kids excited about eating healthy and growing vegetables at a very early age.” Fittingly, preschoolers tend the young tilapia fry in the nursery. “Then we take it higher as they get older,” says Tucek. Using a multi-tank system, fish are moved along until they spawn and the circle of life continues. “Our middle school principal Steve Petry has an amazing fish batter, so the kids put on a fish fry with raw vegetables from our garden at our school board meeting so they could see the fruits of our labor.”

In addition to learning science and nutrition, students tackle the real-life problems of producers. A less-than-robust carrot crop has the kids testing pH levels and jockeying drainage systems. An added bonus of the year-round program, helped along by a committed school board who approved a full-time coordinator, is its ability to help offset the lamentable “summer slide.” Over the summer, over 170 kids participate in an experiential learning program that has them digging in the dirt and field tripping to the nearby

Missouri River. “We see test scores in the fall and spring increase,” says Tucek. “It’s not just about math and science, but these fun enrichment activities help close the achievement gap. The kids feel positive about themselves and they learn lifelong skills.”

Future plans include an orchard, integrating a butterfly dome, and adding more classroom systems in the elementary program. “I can’t believe how energized these kids get by working with our outdoor science program,” says Tucek. “We want to share this with other schools and we invite any school to come and visit us, even on the weekend! Go to [wagner.k12.sd.us](http://wagner.k12.sd.us) or text me on my personal phone at 605-999-2391.”

### Emmer Salad in Sioux Falls with Wagner Middle Schoolers

Emmer wheat, known also as farro or hulled wheat, is wheat’s ancient ancestor. Low in gluten and high in protein, emmer was first domesticated in the Fertile Crescent and, with other B.C. cereal crops, is enjoying a resurgence in contemporary cuisine.

Students from Wagner visit Sioux Falls’ Museum of Visual Materials for a cooking demonstration using emmer wheat. The grain salad incorporates the students’ homegrown roasted pumpkins, parsley and pomegranate seeds, as well as their youthful enjoyment for cooking and discovery.

**Savor Dakota: Salads premieres Thursday, Feb. 1, at 8:30pm (7:30 MT) on SDPB1.**

#### Rebroadcasts:

**SDPB1: Sunday, Feb. 4 at 1:30pm (12:30 MT)**

**SDPB2: Sunday, Feb. 18, 5:30pm (4:30 MT)**

[SDPB.org/SavorDakota](http://SDPB.org/SavorDakota) for recipes and extended interviews.



Students at Wagner Community School garden year-round in the Growing Dome.

# SDPB-TV Daytime Programming

Primetime listings on pages 8-15

SDPB1	WEEKDAYS	SATURDAYS	SUNDAYS
5am / 4 MT	<b>Newsline</b>	<b>Beads, Baubles &amp; Jewels</b>	<b>Dakota Life</b> ▼
5:30 / 4:30 MT	Fitness program	<b>Dakota Life</b> ▼	<b>Dinosaur Train</b>
6am / 5 MT	<b>BBC World News</b>	<b>Mr. Roger's Neighborhood</b>	<b>Sesame Street</b>
6:30 / 5:30 MT	<b>Cat in the Hat</b>	<b>Berenstain Bears</b>	<b>Daniel Tiger's Neighborhood</b>
7am / 6 MT	<b>Nature Cat</b>	<b>Daniel Tiger's Neighborhood</b>	
7:30 / 6:30 MT	<b>Curious George</b>	<b>Splash and Bubbles</b>	<b>Splash and Bubbles</b>
8am / 7 MT		<b>Curious George</b>	<b>Curious George</b>
8:30 / 7:30 MT	<b>Daniel Tiger's Neighborhood</b>	<b>Nature Cat</b>	<b>Nature Cat</b>
9am / 8 MT		<b>Ready Jet Go!</b>	<b>Ready Jet Go!</b>
9:30 / 8:30 MT	<b>Splash and Bubbles</b>	<b>Bob the Builder</b>	<b>Wild Kratts</b>
10am / 9 MT	<b>Ready, Jet, Go!</b>	<b>Fons &amp; Porter's Love of Quilting</b>	<b>Odd Squad</b>
10:30 / 9:30 MT	<b>Super Why!</b>	<b>Fresh Quilting</b>	<b>On Call</b> ▼
11am / 10 MT	<b>Dinosaur Train</b>	<b>Quilt in a Day</b>	
11:30/10:30MT	<b>Peg + Cat</b>	<b>Sewing with Nancy</b>	<b>Market to Market</b>
Noon / 11 MT	<b>Sesame Street</b>	<b>It's Sew Easy</b>	<b>Watchers of the North</b>
12:30 / 11:30MT	<b>Splash and Bubbles</b>	<b>Woodwright's Shop</b>	<b>MotorWeek</b>
1pm / Noon MT	<b>Curious George</b>	<b>Woodsmith Shop</b>	Repeat of previous Thursday 8pm (7 MT)
1:30 / 12:30 MT	<b>Nature Cat</b>	<b>This Old House Hour</b>	
2pm / 1 MT	Educational program		
2:30 / 1:30 MT	<b>Wild Kratts</b>	<b>Chef's Life</b>	Documentary, news, science, nature (see listings online at SDPB.org/TVSchedules)
3pm / 2 MT		<b>Cook's Country</b>	
3:30 / 2:30MT		<b>Fine Cooking</b>	
4pm / 3 MT	<b>Odd Squad</b>	<b>Milk Street Television</b>	<b>Rick Steves' Europe</b>
4:30 / 3:30 MT	<b>Cyberchase</b>	<b>Martha Stewart</b>	<b>Today's Wild West</b>
5pm / 4 MT	<b>Arthur</b>	<b>Classic Gospel</b>	<b>Antiques Roadshow</b>
5:30 / 4:30 MT	<b>Nightly Business Report</b>		

SDPB2	MONDAYS	TUESDAYS	WEDNESDAYS	THURSDAYS	FRIDAYS	SATURDAYS	SUNDAYS						
5am / 4 MT	<b>Overheard w/ Smith</b>	<b>Wealthtrack</b>	<b>To the Contrary</b>	<b>Scully/World Show</b>	<b>Well Read</b>	<b>Second Opinion</b>	<b>To the Contrary</b>						
5:30 / 4:30 MT	<b>Open Mind</b>	<b>Asia Insight</b>	<b>American Forum</b>	<b>Second Opinion</b>	<b>Closer to Truth</b>	<b>Wealthtrack</b>	<b>Washington Week</b>						
6am / 5 MT	<b>Newsroom Tokyo</b>	<b>Newsroom Tokyo</b>	<b>Newsroom Tokyo</b>	<b>Newsroom Tokyo</b>	<b>Newsroom Tokyo</b>	<b>To the Contrary</b>	<b>Scully/World Show</b>						
6:30 / 5:30 MT						<b>Washington Week</b>	<b>Open Mind</b>						
7am / 6 MT	Various history, documentary, news, science & nature.	Various history, documentary, news, science & nature.	Various history, documentary, news, science & nature.	Various history, documentary, news, science & nature.	Various history, documentary, news, science & nature.	Various history, documentary, news, science & nature.	<b>Focus on Europe</b>						
7:30 / 6:30 MT							<b>Global 3000</b>						
8am / 7 MT							<b>America ReFramed</b>						
8:30 / 7:30 MT													
9am / 8 MT													
9:30 / 8:30 MT							<b>Statehouse Press Briefing</b> ▼ (2/8, 2/15)	<b>Statehouse Press Briefing</b> ▼ (2/2, 2/23)	<b>Wealthtrack</b>				
10am / 9 MT							<b>Second Opinion</b>	Various history, documentary, news, science & nature.					
10:30 / 9:30 MT													
11am / 10 MT							<b>On Call</b> ▼	<b>Amanpour on PBS</b>	<b>South Dakota Focus</b> ▼	<b>Amanpour on PBS</b>	<b>Amanpour on PBS</b>	Various history, documentary & public affairs programming.	Various history, documentary, news, science & nature.
11:30 / 10:30MT													
Noon / 11 MT	<b>Overheard w/ Smith</b>	<b>Wealthtrack</b>	<b>To the Contrary</b>	<b>Scully/World Show</b>	<b>Well Read</b>								
12:30 / 11:30MT	<b>Open Mind</b>	<b>Asia Insight</b>	<b>American Forum</b>	<b>Second Opinion</b>	<b>Closer to Truth</b>								
1pm / Noon MT	Documentary, news & science.	Documentary, news & science.	Documentary, news & science.	Documentary, news & science.	Documentary, news & science.								
1:30 / 12:30 MT	<b>Statehouse House</b> ▼ (Live)	<b>Statehouse House</b> ▼ (Live)	<b>Statehouse House</b> ▼ (Live)	<b>Statehouse House</b> ▼ (Live)	<b>Statehouse House</b> ▼ (Live)	<b>To the Contrary</b>	<b>Washington Week</b>						
2pm / 1 MT													
2:30 / 1:30 MT	<b>Statehouse Senate</b> ▼ (Recorded)	<b>Statehouse Senate</b> ▼ (Recorded)	<b>Statehouse Senate</b> ▼ (Recorded)	<b>Statehouse Senate</b> ▼ (Recorded)	<b>Statehouse Senate</b> ▼ (Recorded)	<b>American Forum</b>							
3pm / 2 MT	<b>Newsline</b>	<b>Newsline</b>	<b>Newsline</b>	<b>Newsline</b>	<b>Newsline</b>	<b>Open Mind</b>	<b>Focus on Europe</b>						
3:30 / 2:30MT													
4pm / 3 MT	<b>DW News</b>	<b>DW News</b>	<b>DW News</b>	<b>DW News</b>	<b>DW News</b>	<b>Global 3000</b>							
4:30 / 3:30 MT	Documentary	Documentary	Documentary	Documentary	Documentary	<b>To the Contrary</b>	SDPB Documentary & various						
4:30 / 3:30 MT						<b>Washington Week</b>							
5pm / 4 MT						<b>PBS NewsHour</b>							
5:30 / 4:30 MT	<b>TBA</b>	<b>Documentary</b>											

# Create – SDPB3 Programming

	SDPB3	SUNDAY & WEDNESDAY	MONDAY & FRIDAY	TUESDAY & THURSDAY	SATURDAY THEME DAYS			
<b>OVERNIGHT</b>	1am / Mid.MT	Lidia's Kitchen	Martha Stewart	Martha Stewart	Lidia's Kitchen	Lidia's Kitchen		
	1:30 / 12:30MT	America's Test Kitchen		America's Test Kitchen	Cook's Country	Cook's Country		
	2am / 1 MT	Chef's Life	Real Food	Ellie's Real Good Food	Chef's Life	Chef's Life		
	2:30 / 1:30 MT	Milk Street		Milk Street/Fine Cooking	Cooking (various)	Cooking (various)		
	3am / 2 MT	This Old House	Woodwright's Shop	Ask This Old House	Woodwright's Shop	This Old House		
	3:30 / 2:30MT	Globe Trekker	Travelscope	Rick Steve's Europe	Travelscope	Globe Trekker		
	4am / 3 MT		Travel (various)	Destination Craft	Wknds w/ Yankee			
	4:30 / 3:30MT	Lidia's Kitchen	Martha Stewart	Martha Stewart	Lidia's Kitchen	Lidia's Kitchen		
<b>MORNING</b>	5am / 4 MT	Knitting Daily	Crafting (various)	Quilting Arts	Fresh Quilting	Sewing w/ Nancy	It's Sew Easy	
	5:30 / 4:30 MT	Wyland's Art Studio		Paint This with Jerry Yarnell		Joy of Painting		
	6am / 5 MT	New Scandinavian Cooking		Lucky Chow		Primal Grill		
	6:30 / 5:30 MT	Ciao Italia		Lebanese Kitchen		Joanne Weir Gets Fresh		
	7am / 6 MT	Taste of Louisiana		Taste the Islands		Dining w/ the Chef		My Greek Table
	7:30 / 6:30 MT	Mexico - One Plate at a Time		Weeknight Meals		New Orleans Cooking		
	8am / 7 MT	Rudy Maxa's World		Travel (various)		Family Travel		
	8:30 / 7:30 MT	Journeys in Japan	Travel (various)	Travelscope		Bare Feet in NYC		
	9am / 8 MT	This Old House		This Old House		Woodwright's Shop		
	9:30 / 8:30 MT	American Woodshop		Craftman's Legacy		Woodsmith Shop		
	10am / 9 MT	Garden Smart		P. Allen Smith's Garden Home		Growing a Greener World		
	10:30 / 9:30 MT	For Your Home	Craft in America	Beads, Baubles & Jewels	Make It Artsy	Start Up		
	11am / 10 MT			Wyland's Art Studio	Paint This with Jerry Yarnell	Joy of Painting	February 3 "Big Game Snack Attack"	
	11:30 / 10:30MT			Cooking (various)	Lucky Chow	Primal Grill		
12:30 / 11:30MT	Ciao Italia			Lebanese Kitchen	Joanne Weir Gets Fresh			
1pm / Noon MT	Taste of Louisiana	Taste the Islands	Dining w/ the Chef	My Greek Table				
1:30 / 12:30 MT	Various cooking, travel and crafts programming	Mexico - One Plate	Weeknight Meals		New Orleans Cooking			
2pm / 1 MT		Rudy Maxa's World	Travel (various)		Family Travel			
2:30 / 1:30 MT		Travel (various)	Travelscope		Bare Feet in NYC			
3pm / 2 MT		Rick Steves' Europe	Rick Steves' Europe		Rick Steves' Europe			
3:30 / 2:30MT		American Woodshop	Craftman's Legacy		Woodsmith Shop			
4pm / 3 MT		Garden Smart	P. Allen Smith's Garden Home		Growing a Greener World			
4:30 / 3:30MT		Craft in America	Beads, Baubles & Jewels	Make It Artsy	Start Up			
5pm / 4 MT			This Old House	Woodwright's Shop				
5:30/4:30 MT	Milk Street Television		Milk Street/Fine Cooking		Milk Street/Fine Cookine			
6pm / 5 MT	Ellie's Real Good Food		Simply Ming		Pati's Mexican Table			
6:30 / 5:30 MT	Nick Stellino		Heart & Soul		Baking with Julia			
7pm / 6 MT	Martha Stewart	Lidia's Kitchen	Lidia's Kitchen		Martha Stewart			
7:30 / 6:30 MT	America's Test Kitchen	Cook's Country	Cook's Country		America's Test Kitchen			
8pm / 7 MT	Ellie's Real Good Food	Chef's Life	Chef's Life		Mike Colameco's Real Food			
8:30 / 7:30 MT	Milk Street/Fine Cooking		Milk Street/Fine Cooking		Milk Street/Fine Cooking			
9pm / 8 MT	This Old House		This Old House		Woodwright's Shop			
9:30 / 8:30 MT	Rick Steves' Europe		Travel (various)		Travelscope			
10pm / 9 MT	Destination Craft		Weekends with Yankee		February 24 "Soup-er Weekend"			
10:30 / 9:30 MT	Martha Stewart	Lidia's Kitchen	Lidia's Kitchen		Martha Stewart			
11pm / 10 MT	America's Test Kitchen	Cook's Country	Cook's Country		America's Test Kitchen			
11:30 / 10:30MT	Ellie's Real Good Food		Simply Ming		Pati's Mexican Table			
Mid. / 11 MT	New Scandinavian Cooking		Lucky Chow		Primal Grill			
12:30 / 11:30MT	Equitrekking		Born to Explore		Two for the Road			

## SDPB Kids airs PBS Kids shows 24/7! Details and schedule at [SDPB.org/kids24](http://SDPB.org/kids24).


- SDPB Television programs are Closed Captioned for the Hearing Impaired.
- Schedule is subject to change. Visit [SDPB.org/tvschedules](http://SDPB.org/tvschedules) for program details and schedule changes.
-  Indicates locally produced programming.
- SDPB1, SDPB2, SDPB3 and SDPB Kids are available free over-the-air via antenna and on most cable systems. Call your local provider to find out where you can find them on your cable system.



Photo: ITV Studios 2017 for MASTERPIECE

Jenna Coleman returns for a new season as the young queen who wants it all – romance, power, an heir, and personal freedom, on **Victoria Season 2**. Joining the cast in the new season is legendary actress Dame Diana Riggs who plays the Duchess of Buccleuch, the court's new Mistress of the Robes.

SDPB1: Sundays, February 4, 11, 18 & 25, 7 & 8pm (6 & 7 MT)

### THURSDAY – FEBRUARY 1

#### SDPB1

6:00 (5:00 MT) **PBS NewsHour**  
 7:00 (6:00 MT) **On Call** 📺 *Bugs Around Us That Bug Us*  
 8:00 (7:00 MT) **Dakota Life** 📺  
 8:30 (7:30 MT) **Savor Dakota** 📺 *Salads*  
 9:00 (8:00 MT) **Doc Martin**  
 10:00 (9:00 MT) **Dakota Life** 📺 *Young People Exploring Their Dreams*  
 10:30 (9:30 MT) **BBC World News**  
 11:00 (10:00 MT) **Amanpour on PBS**  
 11:30 (10:30 MT) **Beyond 100 Days**  
 Midnight (11:00 MT) **Stories from the Stage**

#### SDPB2

6:00 (5:00 MT) **NOVA** *The Impossible Flight*  
 8:00 (7:00 MT) **Secrets of the Dead** *The Alcatraz Escape*  
 9:00 (8:00 MT) **PBS NewsHour**  
 10:00 (9:00 MT) **Nightly Business Report**  
 10:30 (9:30 MT) **Scully: The World Show**  
 11:00 (10:00 MT) **NOVA** *The Impossible Flight*

### FRIDAY – FEBRUARY 2

#### SDPB1

6:00 (5:00 MT) **PBS NewsHour**  
 7:00 (6:00 MT) **Washington Week**  
 7:30 (6:30 MT) **Market to Market**  
 8:00 (7:00 MT) **Statehouse** 📺  
 9:00 (8:00 MT) **Great Performances** *Nas Live from the Kennedy Center*  
 10:00 (9:00 MT) **Dakota Life** 📺 *Cowboy Up!*  
 10:30 (9:30 MT) **BBC World News**  
 11:00 (10:00 MT) **Amanpour on PBS**  
 11:30 (10:30 MT) **Savor Dakota** 📺 *Salads*  
 Midnight (11:00 MT) **Stories from the Stage**

#### SDPB2

6:00 (5:00 MT) **Queen Elizabeth's Secret Agents**  
 7:00 (6:00 MT) **American Experience** *Triangle Fire*

8:00 (7:00 MT) **John Lewis: Get in the Way**  
 9:00 (8:00 MT) **PBS NewsHour**  
 10:00 (9:00 MT) **Nightly Business Report**  
 10:30 (9:30 MT) **Asia Insight**  
 11:00 (10:00 MT) **Queen Elizabeth's Secret Agents**  
 Midnight (11:00 MT) **American Experience** *Triangle Fire*

### SATURDAY – FEBRUARY 3

#### SDPB1

6:00 (5:00 MT) **The Lawrence Welk Show**  
 7:00 (6:00 MT) **Doc Martin**  
 8:00 (7:00 MT) **Keeping Up Appearances**  
 8:30 (7:30 MT) **As Time Goes By**  
 9:00 (8:00 MT) **Father Brown**  
 10:00 (9:00 MT) **No Cover, No Minimum** 📺 *Hank Harris*  
 11:00 (10:00 MT) **Austin City Limits** *LCD Soundsystem*  
 Midnight (11:00 MT) **Music Voyager** *The Bahamas: From the Islands to the World*

#### SDPB2

12:30 (11:30 MT) **Reel South**  
 1:00 (Noon MT) **Queen Elizabeth's Secret Agents**  
 2:00 (1:00 MT) **American Experience** *Triangle Fire*  
 3:00 (2:00 MT) **John Lewis: Get in the Way**  
 4:00 (3:00 MT) **To The Contrary**  
 4:30 (3:30 MT) **Washington Week**  
 5:00 (4:00 MT) **PBS NewsHour Weekend**  
 5:30 (4:30 MT) **To Be Announced**  
 6:00 (5:00 MT) **Focus on Europe**  
 6:30 (5:30 MT) **Global 3000**  
 7:00 (6:00 MT) **Deep City: The Birth of the Miami Sound**  
 8:00 (7:00 MT) **American Masters** *B.B. King*  
 9:00 (8:00 MT) **America ReFramed** *A New Color*  
 10:00 (9:00 MT) **Colored Frames**

11:00 (10:00 MT) **Deep City: The Birth of the Miami Sound**  
 Midnight (11:00 MT) **American Masters** *B.B. King*

### SUNDAY – FEBRUARY 4

#### SDPB1

Noon (11:00 MT) **Watchers of the North**  
 12:30 (11:30 MT) **MotorWeek**  
 1:00 (Noon MT) **Dakota Life** 📺  
 1:30 (12:30 MT) **Savor Dakota** 📺 *Salads*  
 2:00 (1:00 MT) **Statehouse** 📺  
 3:00 (2:00 MT) **John Lewis: Get in the Way**  
 4:00 (3:00 MT) **Rick Steves' Europe**  
 4:30 (3:30 MT) **Today's Wild West**  
 5:00 (4:00 MT) **Antiques Roadshow** *New Orleans, Hour One*  
 6:00 (5:00 MT) **Midsomer Murders** *The Black Book*  
 7:00 (6:00 MT) **Masterpiece** *Victoria, Entente Cordiale*  
 8:00 (7:00 MT) **Masterpiece** *Victoria, Faith, Hope & Charity*  
 9:00 (8:00 MT) **Queen Elizabeth's Secret Agents**  
 10:00 (9:00 MT) **Last Dukes**  
 11:00 (10:00 MT) **Globe Trekker** *Food Hour: Ireland*  
 Midnight (11:00 MT) **Washington Week**

#### SDPB2

Noon (11:00 MT) **This American Land**  
 12:30 (11:30 MT) **Start Up**  
 1:00 (Noon MT) **To the Contrary**  
 1:30 (12:30 MT) **Washington Week**  
 2:00 (1:00 MT) **American Forum**  
 2:30 (1:30 MT) **Open Mind**  
 3:00 (2:00 MT) **Focus on Europe**  
 3:30 (2:30 MT) **Global 3000**  
 4:00 (3:00 MT) **America ReFramed** *A New Color*  
 5:00 (4:00 MT) **PBS NewsHour Weekend**  
 5:30 (4:30 MT) **Dakota Life** 📺  
 6:00 (5:00 MT) **Speakeasy**



Photo: Bridgeman Images

Uncover the secret state that helped keep Queen Elizabeth I in power for more than 40 years on **Queen Elizabeth's Secret Agents**. During a time when Britain was divided, unstable and violent, the world's first secret service was born.

SDPB1: Sundays, February 4 & 11, 9pm (8 MT)

SDPB2: Fridays, February 2, 9 & 16, 6pm (5 MT)



(February 4, continued)

- 7:00 (6:00 MT) **Nature Animals with Cameras**
- 8:00 (7:00 MT) **We'll Meet Again Rescued from Mount St. Helens**
- 9:00 (8:00 MT) **Defeating Cancer**
- 10:00 (9:00 MT) **What Is Love**
- 11:00 (10:00 MT) **Nature Animals with Cameras**
- Midnight (11:00 MT) **We'll Meet Again Rescued from Mount St. Helens**

**MONDAY – FEBRUARY 5**

- SDPB1
- 6:00 (5:00 MT) **PBS NewsHour**
- 7:00 (6:00 MT) **Antiques Roadshow New Orleans**
- 8:00 (7:00 MT) **Antiques Roadshow Jacksonville**
- 9:00 (8:00 MT) **Independent Lens Winnie**
- 10:30 (9:30 MT) **BBC World News**
- 11:00 (10:00 MT) **Amanpour on PBS**
- 11:30 (10:30 MT) **Beyond 100 Days**
- Midnight (11:00 MT) **Stories from the Stage**

SDPB2

- 6:00 (5:00 MT) **Bridging the Divide: Tom Bradley**
- 7:00 (6:00 MT) **AfroPop: The Ultimate Cultural Exchange**
- 8:00 (7:00 MT) **Our American Family: The Clarks**
- 8:30 (7:30 MT) **Stories from the Stage Food Confessions**
- 9:00 (8:00 MT) **PBS NewsHour**
- 10:00 (9:00 MT) **Nightly Business Report**
- 10:30 (9:30 MT) **To The Contrary**
- 11:00 (10:00 MT) **Bridging the Divide: Tom Bradley**
- Midnight (11:00 MT) **AfroPop: The Ultimate Cultural Exchange**

**TUESDAY – FEBRUARY 6**

- SDPB1
- 6:00 (5:00 MT) **PBS NewsHour**
- 7:00 (6:00 MT) **We'll Meet Again Lost Children of Vietnam**
- 8:00 (7:00 MT) **American Experience The Gilded Age**
- 10:00 (9:00 MT) **Dakota Life** Sustainable Trends
- 10:30 (9:30 MT) **BBC World News**
- 11:00 (10:00 MT) **Amanpour on PBS**
- 11:30 (10:30 MT) **Beyond 100 Days**
- Midnight (11:00 MT) **Stories from the Stage**

SDPB2

- 6:00 (5:00 MT) **We Knew What We Had: The Greatest Jazz Story Never Told**
- 7:00 (6:00 MT) **America ReFramed Gentlemen of Vision**
- 8:30 (7:30 MT) **Karamu: 100 Years in the House**
- 9:00 (8:00 MT) **PBS NewsHour**
- 10:00 (9:00 MT) **Nightly Business Report**
- 10:30 (9:30 MT) **Global 3000**
- 11:00 (10:00 MT) **America ReFramed Gentlemen of Vision**

**WEDNESDAY – FEBRUARY 7**

- SDPB1
- 6:00 (5:00 MT) **PBS NewsHour**
- 7:00 (6:00 MT) **Nature Animals with Cameras**
- 8:00 (7:00 MT) **NOVA First Face of America**
- 9:00 (8:00 MT) **Impossible Builds The Scorpion Tower**
- 10:00 (9:00 MT) **Detectorists**
- 10:30 (9:30 MT) **BBC World News**



Photo: Museum of the City of New York

Meet the titans and barons of the glittering late 19<sup>th</sup> century, whose materialistic extravagance contrasted harshly with the poverty of the struggling workers who challenged them in **American Experience The Gilded Age**. The vast disparities between them sparked debates still raging today.

SDPB1: Tuesday, February 6, 8pm (7 MT)  
SDPB2: Friday, February 9, 7pm (6 MT)

- 11:00 (10:00 MT) **Amanpour on PBS**
- 11:30 (10:30 MT) **Beyond 100 Days**
- Midnight (11:00 MT) **Stories from the Stage**

SDPB2

- 6:00 (5:00 MT) **Independent Lens Through a Lens Darkly**
- 7:30 (6:30 MT) **Independent Lens Winnie**
- 9:00 (8:00 MT) **PBS NewsHour**
- 10:00 (9:00 MT) **Nightly Business Report**
- 10:30 (9:30 MT) **Focus on Europe**
- 11:00 (10:00 MT) **Independent Lens Through a Lens Darkly**



Photo: Gordon Buchanan

Witness the secret lives of animals like never before on **Nature Animals with Cameras**. This three-part series uncovers truly unprecedented behavior. See a side of the animal kingdom where humans can't go when animals become the cinematographers.

SDPB1: Wednesdays, February 7 & 14, 7pm (6 MT)  
SDPB2: Sundays, February 4, 11, & 18, 7pm (6 MT)

**THURSDAY – FEBRUARY 8**

- SDPB1
- 6:00 (5:00 MT) **PBS NewsHour**
- 7:00 (6:00 MT) **On Call** Screenings and Treatment for Cancer
- 8:00 (7:00 MT) **South Dakota Focus**
- 9:00 (8:00 MT) **Doc Martin**
- 10:00 (9:00 MT) **Detectorists**
- 10:30 (9:30 MT) **BBC World News**
- 11:00 (10:00 MT) **Amanpour on PBS**
- 11:30 (10:30 MT) **Beyond 100 Days**
- Midnight (11:00 MT) **Stories from the Stage**

SDPB2

- 6:00 (5:00 MT) **NOVA First Face of America**
- 7:00 (6:00 MT) **Impossible Builds The Scorpion Tower**
- 8:00 (7:00 MT) **Secrets of the Dead Ben Franklin's Bones**
- 9:00 (8:00 MT) **PBS NewsHour**
- 10:00 (9:00 MT) **Nightly Business Report**
- 10:30 (9:30 MT) **Scully: The World Show**
- 11:00 (10:00 MT) **NOVA First Face of America**
- Midnight (11:00 MT) **Impossible Builds The Scorpion Tower**

**FRIDAY – FEBRUARY 9**

- SDPB1
- 6:00 (5:00 MT) **PBS NewsHour**
- 7:00 (6:00 MT) **Washington Week**
- 7:30 (6:30 MT) **Market to Market**
- 8:00 (7:00 MT) **Statehouse**
- 9:00 (8:00 MT) **Native American Music Awards**
- 10:00 (9:00 MT) **Detectorists**
- 10:30 (9:30 MT) **BBC World News**
- 11:00 (10:00 MT) **Amanpour on PBS**
- 11:30 (10:30 MT) **There. And Back.**
- Midnight (11:00 MT) **Stories from the Stage**



Photo: Ark Media

Photo: WGBH

Follow expert archaeologists and divers as they recover interesting remains of ships, planes, and belongings lost during the epic WWII Dunkirk operations on **NOVA *The Great Escape of Dunkirk***. The team also learns of heroic personal stories from previously classified files.

**SDPB1:** Wednesday, February 14, 8pm (7 MT)

**SDPB2:** Thursday, February 15, 6pm (5 MT)

(February 9, continued)

**SDPB2**

- 6:00** (5:00 MT) **Queen Elizabeth's Secret Agents**
- 7:00** (6:00 MT) **American Experience**  
*The Gilded Age*
- 9:00** (8:00 MT) **PBS NewsHour**
- 10:00** (9:00 MT) **Nightly Business Report**
- 10:30** (9:30 MT) **Asia Insight**
- 11:00** (10:00 MT) **Queen Elizabeth's Secret Agents**
- Midnight** (11:00 MT) **American Experience**  
*The Gilded Age*

**SATURDAY – FEBRUARY 10**

**SDPB1**

- 5:00** (4:00 MT) **Classic Gospel**
- 6:00** (5:00 MT) **The Lawrence Welk Show**
- 7:00** (6:00 MT) **Doc Martin**
- 8:00** (7:00 MT) **Keeping Up Appearances**
- 8:30** (7:30 MT) **As Time Goes By**
- 9:00** (8:00 MT) **Father Brown**
- 10:00** (9:00 MT) **No Cover, No Minimum**   
*Ted and Alice Miller*
- 11:00** (10:00 MT) **Austin City Limits** *Dan Auerbach/Shinyribs*
- Midnight** (11:00 MT) **Music Voyager** *Atlanta*

**SDPB2**

- 12:30** (11:30 MT) **Karamu: 100 Years in the House**
- 1:00** (Noon MT) **Queen Elizabeth's Secret Agents**
- 2:00** (1:00 MT) **American Experience** *Gilded Age*
- 4:00** (3:00 MT) **Finding Your Roots** *We Come From People*
- 5:00** (4:00 MT) **PBS NewsHour Weekend**
- 5:30** (4:30 MT) **Dakota Life**
- 6:00** (5:00 MT) **Finding Your Roots** *In Search of Freedom*
- 7:00** (6:00 MT) **Independent Lens** *A Ballerina's Tale*
- 8:00** (7:00 MT) **Black Ballerina**
- 9:00** (8:00 MT) **America ReFramed** *Gentlemen of Vision*
- 10:30** (9:30 MT) **Karamu: 100 Years in the House**
- 11:00** (10:00 MT) **Independent Lens** *A Ballerina's Tale*
- Midnight** (11:00 MT) **Black Ballerina**

**SUNDAY – FEBRUARY 11**

**SDPB1**

- Noon** (11:00 MT) **Watchers of the North**
- 12:30** (11:30 MT) **MotorWeek**
- 1:00** (Noon MT) **South Dakota Focus**
- 2:00** (1:00 MT) **Statehouse**
- 3:00** (2:00 MT) **Lincoln at Gettysburg**
- 4:00** (3:00 MT) **Rick Steves' Europe**
- 4:30** (3:30 MT) **Today's Wild West**
- 5:00** (4:00 MT) **Antiques Roadshow** *New Orleans*
- 6:00** (5:00 MT) **Midsomer Murders** *Secrets and Spies*
- 7:00** (6:00 MT) **Masterpiece** *Victoria, Faith, Hope & Charity*
- 8:00** (7:00 MT) **Masterpiece** *Victoria, The King Over the Water*
- 9:00** (8:00 MT) **Queen Elizabeth's Secret Agents**
- 10:00** (9:00 MT) **Remembering Leonard Nimoy**
- 11:00** (10:00 MT) **Globe Trekker** *Hawaii*
- Midnight** (11:00 MT) **Washington Week**

**SDPB2**

- Noon** (11:00 MT) **This American Land**
- 12:30** (11:30 MT) **Start Up**
- 1:00** (Noon MT) **To the Contrary**
- 1:30** (12:30 MT) **Washington Week**
- 2:00** (1:00 MT) **American Forum**
- 2:30** (1:30 MT) **Open Mind**
- 3:00** (2:00 MT) **Focus on Europe**
- 3:30** (2:30 MT) **Global 3000**
- 4:00** (3:00 MT) **Play Like a Girl** *A History of Girls Basketball in SD*
- 5:00** (4:00 MT) **PBS NewsHour Weekend**
- 5:30** (4:30 MT) **Karamu: 100 Years in the House**
- 6:00** (5:00 MT) **Variety Studio: Actors on Actors**
- 7:00** (6:00 MT) **Nature** *Animals with Cameras*
- 8:00** (7:00 MT) **We'll Meet Again** *Lost Children of Vietnam*
- 9:00** (8:00 MT) **POV** *Presenting Princess Shaw*
- 10:30** (9:30 MT) **Graceful Voices**
- 11:00** (10:00 MT) **Nature** *Animals with Cameras*
- Midnight** (11:00 MT) **We'll Meet Again** *Lost Children of Vietnam*

**MONDAY – FEBRUARY 12**

**SDPB1**

- 6:00** (5:00 MT) **PBS NewsHour**
- 7:00** (6:00 MT) **Antiques Roadshow** *New Orleans*

- 8:00** (7:00 MT) **Antiques Roadshow**  
*Jacksonville*
- 9:00** (8:00 MT) **POV** *Do Not Resist*
- 10:30** (9:30 MT) **BBC World News**
- 11:00** (10:00 MT) **Amanpour on PBS**
- 11:30** (10:30 MT) **Beyond 100 Days**
- Midnight** (11:00 MT) **Stories from the Stage**

**SDPB2**

- 6:00** (5:00 MT) **Independent Lens** *Wilhemina's War*
- 7:00** (6:00 MT) **AfroPop: The Ultimate Cultural Exchange**
- 9:00** (8:00 MT) **PBS NewsHour**
- 10:00** (9:00 MT) **Nightly Business Report**
- 10:30** (9:30 MT) **To The Contrary**
- 11:00** (10:00 MT) **Independent Lens**  
*Wilhemina's War*
- Midnight** (11:00 MT) **AfroPop: The Ultimate Cultural Exchange**

**TUESDAY – FEBRUARY 13**

**SDPB1**

- 6:00** (5:00 MT) **PBS NewsHour**
- 7:00** (6:00 MT) **We'll Meet Again** *Heroes of 9/11*
- 8:00** (7:00 MT) **American Experience** *Bombing of Wall Street*
- 9:00** (8:00 MT) **Frontline** *The Gang Crackdown*
- 10:00** (9:00 MT) **Detectorists**
- 10:30** (9:30 MT) **BBC World News**
- 11:00** (10:00 MT) **Amanpour on PBS**
- 11:30** (10:30 MT) **Beyond 100 Days**
- Midnight** (11:00 MT) **Stories from the Stage**



Photo: Simon Harnes/ Blink Films

Join journalist Ann Curry for dramatic reunions between people whose lives intersected on 9/11 on **We'll Meet Again** *Heroes of 9/11*. Patrick searches for the stranger who comforted him after the disaster and Tim hopes to thank the fellow chaplain who gave him the strength to carry on.

**SDPB1:** Tuesday, February 13, 7pm (6 MT)

**SDPB2:** Sunday, February 18, 8pm (7 MT)

(February 13, continued)

**SDPB2**

- 7:00 (6:00 MT) **America ReFramed For Akheem**
- 9:00 (8:00 MT) **PBS NewsHour**
- 10:00 (9:00 MT) **Nightly Business Report**
- 10:30 (9:30 MT) **Global 3000**
- 11:00 (10:00 MT) **America ReFramed For Akheem**

**WEDNESDAY – FEBRUARY 14**

**SDPB1**

- 6:00 (5:00 MT) **PBS NewsHour**
- 7:00 (6:00 MT) **Nature Animals with Cameras**
- 8:00 (7:00 MT) **NOVA Great Escape at Dunkirk**
- 9:00 (8:00 MT) **Impossible Builds Europe in the Desert**
- 10:00 (9:00 MT) **Detectorists**
- 10:30 (9:30 MT) **BBC World News**
- 11:00 (10:00 MT) **Amanpour on PBS**
- 11:30 (10:30 MT) **Beyond 100 Days**
- Midnight (11:00 MT) **Stories from the Stage**

**SDPB2**

- 6:30 (5:30 MT) **POV Do Not Resist**
- 8:00 (7:00 MT) **Frontline The Gang Crackdown**
- 9:00 (8:00 MT) **PBS NewsHour**
- 10:00 (9:00 MT) **Nightly Business Report**
- 10:30 (9:30 MT) **Focus on Europe**
- 11:00 (10:00 MT) **POV Do Not Resist**

**THURSDAY – FEBRUARY 15**

**SDPB1**

- 6:00 (5:00 MT) **PBS NewsHour**
- 7:00 (6:00 MT) **On Call** *The Health Benefits of Music*
- 8:00 (7:00 MT) **South Dakota Focus**
- 9:00 (8:00 MT) **Doc Martin**
- 10:00 (9:00 MT) **Detectorists**
- 10:30 (9:30 MT) **BBC World News**
- 11:00 (10:00 MT) **Amanpour on PBS**
- 11:30 (10:30 MT) **Beyond 100 Days**
- Midnight (11:00 MT) **Stories from the Stage**

**SDPB2**

- 6:00 (5:00 MT) **NOVA Great Escape at Dunkirk**
- 7:00 (6:00 MT) **Impossible Builds Europe in the Desert**
- 8:00 (7:00 MT) **Black Women in Medicine**
- 9:00 (8:00 MT) **PBS NewsHour**
- 10:00 (9:00 MT) **Nightly Business Report**
- 10:30 (9:30 MT) **Scully: The World Show**
- 11:00 (10:00 MT) **NOVA Great Escape at Dunkirk**
- Midnight (11:00 MT) **Impossible Builds Europe in the Desert**

**FRIDAY – FEBRUARY 16**

**SDPB1**

- 6:00 (5:00 MT) **PBS NewsHour**
- 7:00 (6:00 MT) **Washington Week**
- 7:30 (6:30 MT) **Market to Market**
- 8:00 (7:00 MT) **Statehouse**
- 9:00 (8:00 MT) **American Masters Maya Angelou**
- 11:00 (10:00 MT) **Amanpour on PBS**
- 11:30 (10:30 MT) **Wind Beneath Your Wings**
- Midnight (11:00 MT) **Stories from the Stage**

**SDPB2**

- 6:00 (5:00 MT) **Queen Elizabeth's Secret Agents**
- 7:00 (6:00 MT) **American Experience Bombing of Wall Street**
- 8:00 (7:00 MT) **1964: The Fight for a Right**
- 9:00 (8:00 MT) **PBS NewsHour**



Photo: WGBH

Explore how the Sunni-Shia divide has been exploited in the last few decades on **Frontline Bitter Rivals: Iran and Saudi Arabia**. This compelling three-hour special examines how the divide has led to unprecedented violence among Muslims and challenges the future of their faith.

SDPB1: Tuesday, February 20, 8pm (7 MT)

- 10:00 (9:00 MT) **Nightly Business Report**
- 10:30 (9:30 MT) **Asia Insight**
- 11:00 (10:00 MT) **Queen Elizabeth's Secret Agents**
- Midnight (11:00 MT) **American Experience Bombing of Wall Street**

**SATURDAY – FEBRUARY 17**

**SDPB1**

- 6:00 (5:00 MT) **The Lawrence Welk Show**
- 7:00 (6:00 MT) **Doc Martin**
- 8:00 (7:00 MT) **Keeping Up Appearances**
- 8:30 (7:30 MT) **As Time Goes By**
- 9:00 (8:00 MT) **Father Brown**
- 10:00 (9:00 MT) **No Cover, No Minimum** *Slim Man*
- 11:00 (10:00 MT) **Austin City Limits** *Chris Stapleton/Turnpike Troubadours*
- Midnight (11:00 MT) **Music Voyager** *Antigua and Barbuda*

**SDPB2**

- 12:30 (11:30 MT) **Graceful Voices**

- 1:00 (Noon MT) **Queen Elizabeth's Secret Agents**
- 2:00 (1:00 MT) **American Experience Bombing of Wall Street**
- 3:00 (2:00 MT) **1964: The Fight for a Right**
- 4:00 (3:00 MT) **Finding Your Roots Family Reunions**
- 5:00 (4:00 MT) **PBS NewsHour Weekend**
- 5:30 (4:30 MT) **Dakota Life**
- 6:00 (5:00 MT) **Finding Your Roots Immigrant Nation**
- 7:00 (6:00 MT) **American Masters Maya Angelou**
- 9:00 (8:00 MT) **America ReFramed For Akheem**
- 11:00 (10:00 MT) **American Masters Maya Angelou**

**SUNDAY – FEBRUARY 18**

**SDPB1**

- Noon (11:00 MT) **Travel Quest with Bill Ball** *South Korea*
- 12:30 (11:30 MT) **MotorWeek**
- 1:00 (Noon MT) **South Dakota Focus**
- 2:00 (1:00 MT) **Statehouse**
- 3:00 (2:00 MT) **The Editor and the Dragon**
- 4:00 (3:00 MT) **Rick Steves' Europe**
- 4:30 (3:30 MT) **Today's Wild West**
- 5:00 (4:00 MT) **Antiques Roadshow** *New Orleans, Hour Three*
- 6:00 (5:00 MT) **Midsomer Murders** *Secrets and Spies*
- 7:00 (6:00 MT) **Masterpiece Victoria: The King Over the Water**
- 8:00 (7:00 MT) **Masterpiece Victoria: The Luxury of Conscience**
- 9:00 (8:00 MT) **Secrets of the Tower of London**
- 10:00 (9:00 MT) **True North: The Sean Swarner Story**
- 11:00 (10:00 MT) **Globe Trekker** *Papua New Guinea Islands*
- Midnight (11:00 MT) **Washington Week**

(Continued on page 14)



Photo: WGBH

Specialists from the country's leading auction houses and independent dealers offer free appraisals of antiques and collectibles on **Antiques Roadshow St. Louis**. The cameras capture compelling tales of family heirlooms, flea market finds and items saved from attics and basements.

SDPB1: Mondays, February 19 & 26, 7pm (6 MT)

# More International News on SDPB-TV



**Beyond 100 Days**, the acclaimed BBC World News nightly public affairs show recorded in Washington, DC and London, will air weeknights Monday-Thursday at 10:30pm (9:30 MT), following **Amanpour on PBS**, on SDPB1.

**Beyond 100 Days** is hosted by Katty Kay in the U.S. and Christian Fraser in the U.K. Following the day's big stories with expert insight from the U.S. and around the world, the program helps audiences understand the events that are shaping our world. The half-hour show showcases key news and policy makers in the U.S., alongside high-profile guests and expert BBC News reporters around the world. It closely examines the Trump Administration



Katty Kay hosts **Beyond 100 Days**.

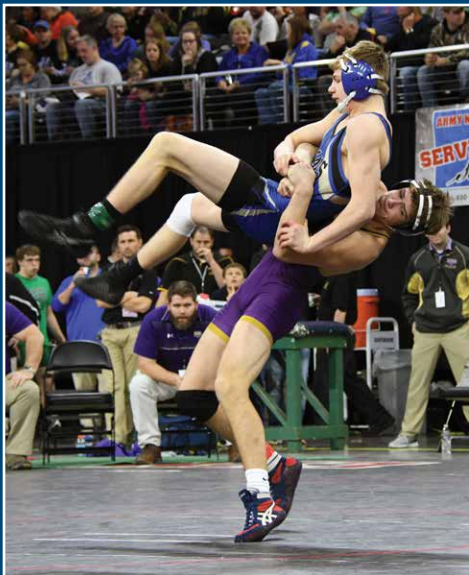
and its global impact, as well as other major international stories, including the Brexit talks, German elections, and relations across Russia, China and the Middle East.

Originally called "100 Days," the series was intended to cover the first 100 days of President Donald Trump's term. Following that period, the show was re-named **Beyond 100 Days** after it became clear that the

story had longer to run.

Katty Kay is a frequent guest commentator on NBC's "Meet the Press" and MSNBC's "Morning Joe," where she also frequently serves as guest co-host.

Fraser presents **Beyond 100 Days** with Kay for the BBC News Channel, BBC World News and BBC 4. He also presents on BBC Breakfast and Radio 4's PM program.



SDHSAA Wrestling is Feb. 23-24.



State Gymnastics is Feb. 9-10.

## Flying High Now

South Dakota high school thespians, gymnasts and grapplers are showcased on SDPB throughout February.

**One-Act Play Festival – Brandon Valley, Feb. 3**  
Follow the drama on SDPB.org, Facebook and Twitter at #SDOneActs17

**State Gymnastics Finals – Watertown, Feb. 9-10**  
Live coverage from Class A and Class AA meets on SDPB.org.  
Highlights air on SDPB1, Saturday, March 10, at 4pm (3 MT).

**State Wrestling Tournament – Sioux Falls, Feb. 23-24**  
Watch Class A and Class B live online at SDPB.org.  
Championships are live on SDPB1, Saturday, Feb. 24, at 6pm (5 MT).



One-Act Play Festival is Feb. 3.

Coverage of SDHSAA is sponsored by Dacotah Bank and SD Corn. Also by SDN Communications, Independent Insurance Agents of South Dakota, SDSU and the SD Dept. of Education. And by Touchstone Energy, Sanford Health, and Lake Area Tech. And by Delta Dental, Dakota Plains New Holland, Fischer Rounds, Farmers Union, Catholic United Financial and SD Ethanol.

# Exclusive Escorted

Bursch Travel has taken care of all the details on these exclusive trips.  
All you have to do is sit back and enjoy!



## Alaska Cruise

7-Day Voyage of the Glacier Cruise  
July 14-21, 2018 Aboard the Ruby Princess  
Escorted by Krisha & Matt Friede



## Alaska Tour & Cruise

5 Day Mt Mckinley with Denali National Park & 7-Day Voyage of the Glacier Cruise  
July 13-25, 2018 Aboard the Island Princess  
Escorted by Donna Strommen

For complete details of each of these trips and others visit

[www.burschtravel.com](http://www.burschtravel.com)

## Bursch Travel

803 Saint Patrick St.  
Rapid City, South Dakota

605-342-2700 or

1-800-658-3348



## THE MAGIC OF A 7-NIGHT DISNEY CRUISE



7 nights gives you more time to indulge in all the things you love—like each other. Discover an amazing ocean voyage. The beauty and tranquility of tropical Caribbean destinations. And all the one-of-a-kind magic and fun only found on your Disney cruise ship. It's all just a dream away.

To book your magical *Disney Cruise Line* vacation, contact us today!



Bursch Travel

Bursch Travel  
803 St. Patrick St  
Rapid City

605-342-2700 or 800-658-3348

[www.burschtravel.com](http://www.burschtravel.com)



Ships' Registry: The Bahamas

©Disney DCL-17-58189





Discover how prediction underpins nearly every aspect of our lives and why some succeed spectacularly while others fail on **NOVA Prediction by the Numbers**. Explore entertaining real-world challenges and join experts as they tackle that age-old question: can we forecast the future?

**SDPB1: Wednesday, February 21, 8pm (7 MT)**

**SDPB2: Thursday, February 22, 6pm (5 MT)**

(February 18, continued from page 11)

#### SDPB2

Noon (11:00 MT) **This American Land**

12:30 (11:30 MT) **Start Up**

1:00 (Noon MT) **To the Contrary**

1:30 (12:30 MT) **Washington Week**

2:00 (1:00 MT) **American Forum**

2:30 (1:30 MT) **Open Mind**

3:00 (2:00 MT) **Focus on Europe**

3:30 (2:30 MT) **Global 3000**

4:00 (3:00 MT) **Kings of the Court**

5:00 (4:00 MT) **PBS NewsHour Weekend**

5:30 (4:30 MT) **Savor Dakota** **Salads**

6:00 (5:00 MT) **Variety Studio: Actors on Actors**

7:00 (6:00 MT) **Nature Animals with Cameras**

8:00 (7:00 MT) **We'll Meet Again Heroes of 9/11**

9:00 (8:00 MT) **Black Panthers: Vanguard of the Revolution**

11:00 (10:00 MT) **Nature Animals with Cameras**

Midnight (11:00 MT) **We'll Meet Again Heroes of 9/11**

#### MONDAY – FEBRUARY 19

##### SDPB1

6:00 (5:00 MT) **PBS NewsHour**

7:00 (6:00 MT) **Antiques Roadshow St. Louis**

8:00 (7:00 MT) **Independent Lens Tell Them We Are Rising**

9:30 (8:30 MT) **Rising from the Rails: The Story of the Pullman Porter**

10:30 (9:30 MT) **BBC World News**

11:00 (10:00 MT) **Amanpour on PBS**

11:30 (10:30 MT) **Beyond 100 Days**

Midnight (11:00 MT) **Stories from the Stage**

##### SDPB2

6:00 (5:00 MT) **Independent Lens Birth of a Movement**

7:00 (6:00 MT) **AfroPop: The Ultimate Cultural Exchange**

8:00 (7:00 MT) **Local USA**

8:30 (7:30 MT) **Stories from the Stage**

9:00 (8:00 MT) **PBS NewsHour**

10:00 (9:00 MT) **Nightly Business Report**

10:30 (9:30 MT) **To the Contrary**

11:00 (10:00 MT) **Independent Lens Birth of a Movement**

Midnight (11:00 MT) **AfroPop: The Ultimate Cultural Exchange**

#### TUESDAY – FEBRUARY 20

##### SDPB1

6:00 (5:00 MT) **PBS NewsHour**

7:00 (6:00 MT) **We'll Meet Again Freedom Summer**

8:00 (7:00 MT) **Frontline Bitter Rivals: Iran and Saudi Arabia Part 1**

10:00 (9:00 MT) **Detectorists**

10:30 (9:30 MT) **BBC World News**

11:00 (10:00 MT) **Amanpour on PBS**

11:30 (10:30 MT) **Beyond 100 Days**

Midnight (11:00 MT) **Stories from the Stage**

##### SDPB2

7:00 (6:00 MT) **America ReFramed Agents of Change**

8:30 (7:30 MT) **Fighting on Both Fronts**

9:00 (8:00 MT) **PBS NewsHour**

10:00 (9:00 MT) **Nightly Business Report**

10:30 (9:30 MT) **Global 3000**

11:00 (10:00 MT) **America ReFramed Agents of Change**

#### WEDNESDAY – FEBRUARY 21

##### SDPB1

6:00 (5:00 MT) **PBS NewsHour**

7:00 (6:00 MT) **Nature The Last Rhino**

8:00 (7:00 MT) **NOVA Prediction by the Numbers**

9:00 (8:00 MT) **Impossible Builds The Floating House**

10:00 (9:00 MT) **Detectorists**



Photo: Brendan Easton

10:30 (9:30 MT) **BBC World News**  
 11:00 (10:00 MT) **Amanpour on PBS**  
 11:30 (10:30 MT) **Beyond 100 Days**  
 Midnight (11:00 MT) **Stories from the Stage**

##### SDPB2

6:00 (5:00 MT) **Slavery by Another Name**

7:30 (6:30 MT) **Independent Lens Tell Them We Are Rising**

9:00 (8:00 MT) **PBS NewsHour**

10:00 (9:00 MT) **Nightly Business Report**

10:30 (9:30 MT) **Focus on Europe**

11:00 (10:00 MT) **Independent Lens Tell Them We Are Rising**

#### THURSDAY – FEBRUARY 22

##### SDPB1

6:00 (5:00 MT) **PBS NewsHour**

7:00 (6:00 MT) **On Call** **Perils of Aging**

8:00 (7:00 MT) **South Dakota Focus**

9:00 (8:00 MT) **Doc Martin**

10:00 (9:00 MT) **Detectorists**

10:30 (9:30 MT) **BBC World News**

11:00 (10:00 MT) **Amanpour on PBS**

11:30 (10:30 MT) **Beyond 100 Days**

Midnight (11:00 MT) **Stories from the Stage**

##### SDPB2

6:00 (5:00 MT) **NOVA Prediction by the Numbers**

7:00 (6:00 MT) **Impossible Builds The Floating House**

8:00 (7:00 MT) **Secrets of the Dead Nero's Sunken City**

9:00 (8:00 MT) **PBS NewsHour**

10:00 (9:00 MT) **Nightly Business Report**

10:30 (9:30 MT) **Scully: The World Show**

11:00 (10:00 MT) **NOVA Prediction by the Numbers**

Midnight (11:00 MT) **Impossible Builds The Floating House**

#### FRIDAY – FEBRUARY 23

##### SDPB1

6:00 (5:00 MT) **PBS NewsHour**

7:00 (6:00 MT) **Washington Week**

7:30 (6:30 MT) **Market to Market**

8:00 (7:00 MT) **Statehouse**

9:00 (8:00 MT) **Great Performances Movies for Grownups Awards with AARP**

11:00 (10:00 MT) **Amanpour on PBS**

11:30 (10:30 MT) **Dynasty on the Diamond: Post 22 Baseball**

Midnight (11:00 MT) **Stories from the Stage**

##### SDPB2

7:00 (6:00 MT) **American Masters Maya Angelou**

9:00 (8:00 MT) **PBS NewsHour**

10:00 (9:00 MT) **Nightly Business Report**

10:30 (9:30 MT) **Asia Insight**

11:00 (10:00 MT) **Frontline**

**On Nature: The Last Rhino**, meet Sudan, a northern white rhino and the last male of his kind, living in a Kenyan sanctuary under 24-hour armed guard. Trace his harrowing journey as scientists and animal experts race to save his species before it dies out forever.

**SDPB1: Wednesday, February 21, 7pm (6 MT)**

## SATURDAY – FEBRUARY 24

SDPB1

- 6:00 (5:00 MT) **S.D. High School Wrestling Championships**  *Class A & B*
- 10:30 (9:30 MT) **No Cover, No Minimum**  *Sioux River Folk Fest 2017*
- 11:30 (10:30 MT) **Austin City Limits Ms. Lauryn Hill**

SDPB2

- 12:30 (11:30 MT) **Stories from the Stage**
- 1:00 (Noon MT) **Black Panthers: Vanguard of the Revolution**
- 3:00 (2:00 MT) **Liberty & Slavery: The Paradox of America's Founding Fathers**
- 4:00 (3:00 MT) **To the Contrary**
- 4:30 (3:30 MT) **Washington Week**
- 5:00 (4:00 MT) **PBS NewsHour Weekend**
- 5:30 (4:30 MT) **To Be Announced**
- 6:00 (5:00 MT) **Finding Your Roots** *Focus on Europe*
- 7:00 (6:00 MT) **Great Performances** *Movies for Grownups Awards with AARP*
- 9:00 (8:00 MT) **America ReFramed** *Agents of Change*
- 10:30 (9:30 MT) **Fighting on Both Fronts: The Story of the 370<sup>th</sup>**
- 11:00 (10:00 MT) **Great Performances** *Movies for Grownups Awards with AARP*

## SUNDAY – FEBRUARY 25

SDPB1

- Noon (11:00 MT) **Yellowstone in Four Seasons**
- 12:30 (11:30 MT) **MotorWeek**
- 1:00 (Noon MT) **South Dakota Focus** 
- 2:00 (1:00 MT) **Statehouse** 
- 3:00 (2:00 MT) **2 Sides Project**
- 4:00 (3:00 MT) **Rick Steves' Europe**
- 4:30 (3:30 MT) **Today's Wild West**
- 5:00 (4:00 MT) **Antiques Roadshow** *St. Louis*
- 6:00 (5:00 MT) **Midsomer Murders** *The Glitch*
- 7:00 (6:00 MT) **Masterpiece** *Victoria*
- 8:00 (7:00 MT) **Masterpiece** *Victoria*
- 9:30 (8:30 MT) **Masterpiece** *Sherlock, The Abominable Bride*
- 11:00 (10:00 MT) **Globe Trekker** *Food Hour: The Story of Beef*
- Midnight (11:00 MT) **Washington Week**



Photo: pbs.org

Condoleezza Rice and David M. Kennedy team up across party lines on **American Creed** to ask whether there are ideals Americans have in common. Stories of unlikely activists show communities striving to come together across deep divides on a program much-needed for our modern times.

SDPB1: Tuesday, February 27, 8pm (7 MT)



Photo: Aaron Munson

The captivating new documentary **Neanderthal** examines the perplexing assembly of the real Neanderthal, both inside and out. It also connects what scientists are learning about the historical Neanderthal with the implications for our lives today.

SDPB1: Wednesday, February 28, 8pm (7 MT)

SDPB2

- Noon (11:00 MT) **This American Land**
- 12:30 (11:30 MT) **Start Up**
- 1:00 (Noon MT) **To the Contrary**
- 1:30 (12:30 MT) **Washington Week**
- 2:00 (1:00 MT) **American Forum**
- 2:30 (1:30 MT) **Open Mind**
- 3:00 (2:00 MT) **Focus on Europe**
- 3:30 (2:30 MT) **Global 3000**
- 4:00 (3:00 MT) **Temples of Justice** 
- 5:00 (4:00 MT) **PBS NewsHour Weekend**
- 5:30 (4:30 MT) **Fighting on Both Fronts: The Story of the 370<sup>th</sup>**
- 6:00 (5:00 MT) **Variety Studio: Actors on Actors**
- 7:00 (6:00 MT) **Nature** *The Last Rhino*
- 8:00 (7:00 MT) **We'll Meet Again** *Freedom Summer*
- 9:00 (8:00 MT) **Independent Lens** *Accidental Courtesy*
- 10:30 (9:30 MT) **Unlikely Friendship**
- 11:00 (10:00 MT) **Nature** *The Last Rhino*
- Midnight (11:00 MT) **We'll Meet Again** *Freedom Summer*

## MONDAY – FEBRUARY 26

SDPB1

- 6:00 (5:00 MT) **PBS NewsHour**
- 7:00 (6:00 MT) **Antiques Roadshow** *St. Louis*
- 8:00 (7:00 MT) **Antiques Roadshow** *Jacksonville*
- 9:00 (8:00 MT) **Independent Lens** *Tell Them We Are Rising*
- 10:00 (9:00 MT) **Detectorists**
- 10:30 (9:30 MT) **BBC World News**
- 11:00 (10:00 MT) **Amanpour on PBS**
- 11:30 (10:30 MT) **Beyond 100 Days**
- Midnight (11:00 MT) **Stories from the Stage**

SDPB2

- 6:00 (5:00 MT) **Mr. Civil Rights: Thurgood Marshall**
- 7:00 (6:00 MT) **AfroPop: The Ultimate Cultural Exchange**
- 8:00 (7:00 MT) **Local USA**
- 8:30 (7:30 MT) **Stories from the Stage**
- 9:00 (8:00 MT) **PBS NewsHour**
- 10:00 (9:00 MT) **Nightly Business Report**
- 10:30 (9:00 MT) **To the Contrary**
- 11:00 (10:00 MT) **Mr. Civil Rights: Thurgood Marshall**

Midnight (11:00 MT) **AfroPop: The Ultimate Cultural Exchange**

## TUESDAY – FEBRUARY 27

SDPB1

- 6:00 (5:00 MT) **PBS NewsHour**
- 7:00 (6:00 MT) **We'll Meet Again** *Coming Out*
- 8:00 (7:00 MT) **American Creed**
- 9:00 (8:00 MT) **Frontline** *Bitter Rivals: Iran and Saudi Arabia Part 2*
- 10:00 (9:00 MT) **Detectorists**
- 10:30 (9:30 MT) **BBC World News**
- 11:00 (10:00 MT) **Amanpour on PBS**
- 11:30 (10:30 MT) **Beyond 100 Days**
- Midnight (11:00 MT) **Stories from the Stage**

SDPB2

- 7:00 (6:00 MT) **America ReFramed** *Baddddd Sonia Sanchez*
- 9:00 (8:00 MT) **PBS NewsHour**
- 10:00 (9:00 MT) **Nightly Business Report**
- 10:30 (9:30 MT) **Global 3000**
- 11:00 (10:00 MT) **America ReFramed** *Baddddd Sonia Sanchez*

## WEDNESDAY – FEBRUARY 28

SDPB1

- 6:00 (5:00 MT) **PBS NewsHour**
- 7:00 (6:00 MT) **Nature** *Snowbound: Animals of Winter*
- 8:00 (7:00 MT) **Neanderthal**
- 9:00 (8:00 MT) **Neanderthal**
- 10:00 (9:00 MT) **Detectorists**
- 10:30 (9:30 MT) **BBC World News**
- 11:00 (10:00 MT) **Amanpour on PBS**
- 11:30 (10:30 MT) **Beyond 100 Days**
- Midnight (11:00 MT) **Stories from the Stage**

SDPB2

- 7:00 (6:00 MT) **Independent Lens** *Rat Film*
- 8:00 (7:00 MT) **In Their Own Words** *Muhammad Ali*
- 9:00 (8:00 MT) **PBS NewsHour**
- 10:00 (9:00 MT) **Nightly Business Report**
- 10:30 (9:30 MT) **Focus on Europe**
- 11:00 (10:00 MT) **Independent Lens** *Rat Film*
- Midnight (11:00 MT) **In Their Own Words** *Muhammad Ali*



Historic Schmeckfest photos by Willard Waltner



Sponsored by the Freeman Academy Auxiliary  
Two Weekends, Friday and Saturday  
March 16-17 & 23-24, 2018  
PIONEER HALL, FREEMAN, S.D.

Ethnic Germans-from-Russia Meal Served Buffet Style - 3:45 p.m. to 7:00 p.m.  
Tickets Available For 1000 Meals Each Evening — Advance Sale Only

### Join Us As We Celebrate 60 Years!

In honor of our 60th year and to offer a nostalgic feel for the early years of our ethnic festival, we are returning to buffet-style serving for the meal this year. Our hosts and servers will be available to guide you and provide assistance to those who need it.

Ethnic Handicraft & Culinary Displays, Schmeckfest Country Kitchen, Museum  
MUSICAL PRODUCTION STAGED NIGHTLY - 8 P.M.



Historic Schmeckfest photos by Willard Waltner

Order Meal & Musical Tickets By Mail:  
Schmeckfest, Box S  
Freeman, SD 57029



Presented by the Freeman Community  
An additional performance at 7:30 p.m., Thursday, March 22.

Order Meal & Musical Tickets Online:  
Schmeckfest.com

Composed by Stephen Schwartz with spoken parts by John-Michael Tebelak. Licensing agent: Music Theatre International (MTI) 421 West 54th St., New York, NY 10019.

Every child's classroom should...

- ✓ Nurture the heart and soul
- ✓ Bring joy ... in discovery
- ✓ Build character and self-confidence
- ✓ Provide caring community & academic success

Discovery Days: February 19 & March 9



Are you looking for more for your child?

FreemanAcademy.org



# Impossible Builds

## The World's Boldest Construction Projects

Learn about the creation of some of the world's most ambitious and technologically advanced buildings. From subaquatic homes to futuristic towers and pencil-thin skyscrapers, see how these previously impossible structures are taking shape.



Photo: Zaha Hadid Architects

### *The Scorpion Tower*

**SDPB2: Thursday, Feb. 8, 7pm (6 MT)**

Follow the construction of one of the most complex skyscrapers ever to make it off the drawing board. Its design is so radical that construction experts have turned to a building material never before used in skyscrapers.



Photo: those.com

### *The Floating House*

**SDPB2: Thursday, Feb. 22, 7pm (6 MT)**

A team in Dubai attempts to construct a floating house combining the best of land and marine design.



Photo: those.com

### *Europe in the Desert* — **SDPB2: Thursday, Feb. 15, 7pm (6 MT)**

Can six sand islands, poking out of the Persian Gulf near Dubai, be transformed into the most luxurious holiday destination on earth? One man believes they can and he's risking tens of millions of dollars to prove it.

# Bedtime Stories

## New Late Night Programming on SDPB

PBS, WORLD Channel and SDPB present **Stories from the Stage**. Building on the popularity of storytelling, **Stories from the Stage** showcases the power of real stories told by masterful and first-time storytellers from a variety of backgrounds. Hosted by Theresa Okokon and Wes Hazard, each half-hour episode explores the art of storytelling, introducing the episode's theme, interviews with each storyteller talking about their craft, their amazing on-stage performances, and audience reaction.

**SDPB1: Weeknights at Midnight (11pm MT)**

# STORIES FROM THE STAGE



Photo: WGBH

# So, Where Do We Go from Here?

SDPB launches new discussion series aimed at discovering community solutions.

In an age of complicated and contentious issues, we often resign ourselves to “agree to disagree.” What opportunities might arise if we risk deeper conversations? What might happen when we discuss issues, share divergent points of view, and ask, “So, where do we go from here?”

SDPB invites you to lend your voice and ideas to *So, Where Do We Go from Here?* – an on-going discussion series designed to both focus and expand our conversation on issues of local and national concern.

*So, Where Do We Go from Here?* is moderated by Chuck Parkinson and takes place monthly at the SDPB Black Hills Bureau. Originally from Kadoka, Parkinson is a graduate of the University of South Dakota and an U.S. Army veteran. He worked nearly 30 years in Washington, D.C. for the U.S. House of Representatives and the U.S. Senate. Parkinson began his career on the staff of Congressman Jim Abdnor (R-SD), and served four years on the professional staff of the House Committee on Veterans Affairs and 17 years on the professional staffs of the House and Senate Committees on Appropriations. Parkinson was also appointed by President Reagan and reappointed by George H.W. Bush to serve as the Associate Commissioner of the U.S. Customs Service.

Since returning home with his wife Suzanne to live in Rapid City, Parkinson has served on several boards, including the Museum Alliance of Rapid City, American Legion Post 22 Baseball and Character Education. “Civil and honest discussion – and listening – promotes understanding and opens the door to move forward,” says Parkinson. “Being active in public issues and advocating for open discussion and transparency can help address political polarization.”



SDPB Black Hills Bureau in downtown Rapid City.

**What:** *So, Where Do We Go from Here?* SDPB Discussion Series looks at “The Future of Downtown Rapid City: Zoning, Public Investment, Parking, and Helping the Homeless”

**When:** Wednesday, Feb. 21, Noon

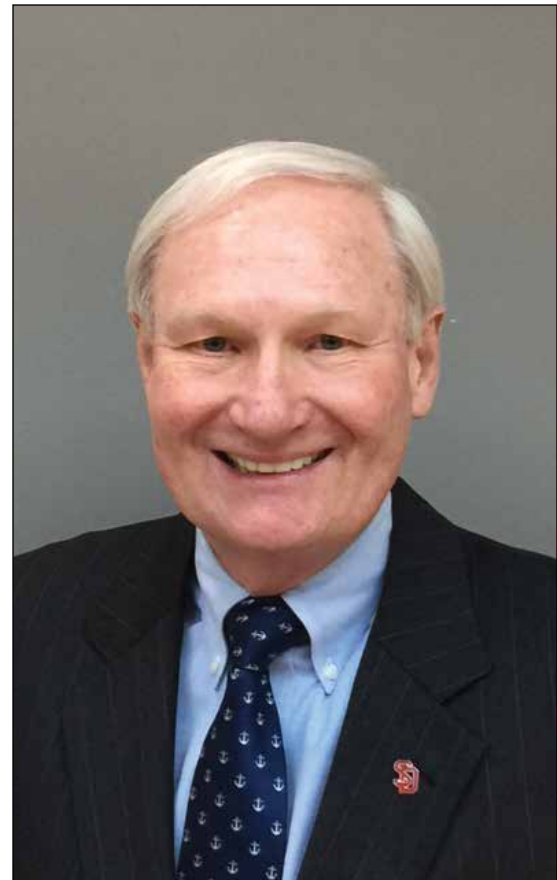
**Who:** Free & open to the public. Moderated by Chuck Parkinson and includes special guests and opinion leaders.

**Where:** SDPB Black Hills Bureau, 415 E. Main St, Rapid City. Participants are invited to bring a brown-bag lunch with their thoughts and ideas.

**Upcoming *So, Where Do We Go from Here?* Topics:**

**March 21:** SD Initiative and Referendum

**April 18:** Black Hills Natural Resources and Reclamation



Chuck Parkinson.



RADIO	WEEKDAYS	SATURDAYS	SUNDAYS	
5am / 4 MT	<b>Morning Edition</b> News and more from NPR's Steve Inskeep, Rachel Martin & David Greene and SDPB's Gary Ellenbolt.	<b>BBC World Service</b> Overnight.	<b>BBC World Service</b> Overnight.	
5:30/4:30 MT		<b>The People's Pharmacy</b> Health news & alternatives.	<b>TED Radio Hour</b> Ideas, inventions and original thinking.	
6am / 5 MT		<b>Weekend Edition</b> News and features from NPR.	<b>Weekend Edition</b> News and features from NPR.	
6:30/5:30 MT				
7am / 6 MT		<b>On Point</b> Lively conversations about issues and the arts.	<b>Wait, Wait ... Don't Tell Me!</b> Trivia, humor from week's news.	<b>Weekend Edition</b> News and features from NPR.
7:30/6:30 MT				<b>On Being with Krista Tippett</b> Philosophical discussions.
8am / 7 MT				<b>Travel with Rick Steves</b> America's top travel expert.
8:30/7:30 MT		<b>In the Moment with Lori Walsh</b> ▼ SDPB's daily news & culture magazine program. <b>Tech Radio &amp; Innovation</b> on Fridays.	<b>This American Life</b> Portraits of all kinds of Americans.	<b>Milk Street Kitchen</b> Recipes, tips, and information.
9am / 8 MT	<b>Radiolab</b> Science and life.		<b>Live from Here</b> Music, humor, skits and more with Chris Thile.	
9:30/8:30 MT	<b>TED Radio Hour</b> Ideas, inventions and original thinking.			
10am / 9 MT	<b>Here &amp; Now</b> News, features, conversations and more from NPR.	<b>Ask Me Another</b> Test your wits in this lively quiz show.	<b>Wait, Wait ... Don't Tell Me!</b> Trivia, humor from week's news.	
10:30/9:30 MT		<b>Only a Game</b> Sports & competition in U.S. culture.	<b>On the Media</b> News analysis and journalistic journeys.	
11am / 10 MT	<b>All Things Considered</b> News, interviews & features with NPR's Audie Cornish, Ari Shapiro & Kelly McEvers.	<b>All Things Considered</b> NPR	<b>All Things Considered</b> NPR	
11:30/10:30MT		<b>The Show with Chris Thile</b> Music, humor, skits and more with Chris Thile.	<b>Fresh Air Weekend</b> Best features from the week.	
Noon / 11 MT	<b>National Native News</b> 4:30 (3:30 MT)			<b>Radiolab</b> Weaves stories and science into documentaries.
12:30/11:30MT	<b>Marketplace</b>	<b>American Routes</b> Roots music, stories behind sounds & artists.	<b>This American Life</b> Portraits of all kinds of Americans.	
1pm / Noon MT			<b>No Cover, No Minimum Radio</b> ▼ South Dakota performance.	<b>The Moth Radio Hour</b> Compelling real-life stories.
1:30/12:30 MT	<b>Fresh Air with Terry Gross</b> Celeb & newsmaker interviews.	<b>On Record with Matt Weesner</b> ▼ Adult alternative music.		<b>Big Band Spotlight with Karl Gehrke</b> ▼ Music of '30s & '40s.
2pm / 1 MT			<b>Jazz Nightly with Karl Gehrke</b> ▼ Karl features jazz artists & styles, as well as South Dakota Jazz Stars.	<b>Jazz Nightly Extra</b> ▼ More jazz from SDPB's vast library.
2:30/1:30 MT	<b>World Café</b> Music from around the globe.	<b>No Cover, No Minimum Radio</b> ▼ South Dakota performance.		
3pm / 2 MT			<b>BBC World Service</b> Overnight.	<b>BBC World Service</b> Overnight.
3:30/2:30 MT	<b>BBC World Service</b> Overnight.			
4pm / 3 MT		<b>BBC World Service</b> Overnight.		
4:30/3:30 MT	<b>BBC World Service</b> Overnight.			
5pm / 4 MT		<b>BBC World Service</b> Overnight.		
5:30/4:30 MT	<b>BBC World Service</b> Overnight.			
6pm / 5 MT		<b>BBC World Service</b> Overnight.		
6:30/5:30 MT	<b>BBC World Service</b> Overnight.			
7pm / 6 MT		<b>BBC World Service</b> Overnight.		
7:30/6:30 MT	<b>BBC World Service</b> Overnight.			
8pm / 7 MT		<b>BBC World Service</b> Overnight.		
8:30/7:30 MT	<b>BBC World Service</b> Overnight.			
9pm / 8 MT		<b>BBC World Service</b> Overnight.		
9:30/8:30 MT	<b>BBC World Service</b> Overnight.			
10pm / 9 MT		<b>BBC World Service</b> Overnight.		
10:30/9:30 MT	<b>BBC World Service</b> Overnight.			
11pm / 10 MT		<b>BBC World Service</b> Overnight.		
11:30/10:30MT	<b>BBC World Service</b> Overnight.			
Mid. / 11 MT		<b>BBC World Service</b> Overnight.		
12:30/11:30MT	<b>BBC World Service</b> Overnight.			
1am / Mid. MT		<b>BBC World Service</b> Overnight.		
	<b>BBC World Service</b> Overnight.			
		<b>BBC World Service</b> Overnight.		

## A Prairie Home Companion now Live From Here

Public radio's music and variety show *A Prairie Home Companion* has a new name: **Live from Here**.

Host Chris Thile shared the show's new name and said, "My hope is that this name captures the energy and enthusiasm that is really at the core of this show. **Live from Here** is about people making beautiful things and sharing them with our audience in real time. The fact that the show is live — where anything is possible — is part of what makes it so special."

This variety show features a unique blend of musical performances, comedy and audience interaction. Acclaimed musician and songwriter Thile welcomes a wide range of well-



Chris Thile hosts **Live From Here**, formerly known as **A Prairie Home Companion**.

known and up-and-coming talent to share the stage and create a beautiful listening experience.

Listen on SDPB Radio, Saturdays at 5pm (4 MT) and Sundays at Noon (11am MT).

# Timely. Essential. Yours.

Tune in to SDPB throughout February and throughout the year for reliably intelligent programs that discuss issues of race and identity in the United States.



Photo: Vanish Films

## POV: Do Not Resist

A vital and influential exploration of the rapid militarization of the police in the United States. The documentary puts viewers in the center of the action — from inside a police training seminar that teaches the importance of “righteous violence” to the floor of a congressional hearing on the proliferation of military equipment in small-town police departments. *Winner, Best Documentary Feature Award, 2016 Tribeca Film Festival.*

**SDPB1: Monday, February 12, 9pm (8 MT)**

**SDPB2: Wednesday, February 14, 6:30pm (5:30 MT)**



Photo: Morgan State University

## Independent Lens: Tell Them We Are Rising

Filmmaker Stanley Nelson, who brought the story of a revolution to the screen with **The Black Panthers: Vanguard of a Revolution**, has once again encapsulated an enormous piece of black history with the first documentary that focuses on the history of our nation’s historically black colleges and universities (HBCUs). **Tell Them We Are Rising** explores the pivotal role that HBCUs have played in shaping American history, culture and national identity as well as the power of higher education to transform lives and advance civil rights and equality in the face of intolerance and injustice.

“One of the goals of the *Tell Them We Are Rising* project is to create a space for collaborative storytelling,” co-producer Marco Williams said, “To tell this important and complex story, it is essential that our documentary highlights personal accounts, letters, diaries, photographs, and even home movies of the people who have lived the HBCU experience.”

**SDPB1: Monday, February 19, 8pm (7 MT)**

**SDPB2: Wednesday, February 21, 7:30pm (6:30 MT)**



Photo: Justine Kershaw/ Blink Films

## We’ll Meet Again: Freedom Summer

Join host Ann Curry for the dramatic reunions of people who lost touch after the civil rights movement. Fatima hopes to thank Thelma for her courage in the face of racism, and Sherie searches for the friend who inspired her commitment to social justice.

**SDPB1: Tuesday, February 20, 7pm (6 MT)**

**SDPB2: Sunday, February 25, 8pm (7 MT)**

# Daring to be Powerful

Winnie Mandela & Dr. Maya Angelou



Winnie Madikizela Mandela (middle) speaks to the press.

## Independent Lens: Winnie

Winnie Madikizela Mandela is one of the most misunderstood and intriguing of contemporary female political figures. The second wife of Nelson Mandela, she was elected in 1993 to the presidency of the African National Congress Women's League and in 1994 to South Africa's Parliament. She and Mandela separated in 1992 and were divorced in 1996, after her relative militancy alienated fellow antiapartheid activists, including Nelson Mandela. Her rise and seeming fall from grace amid scandals and allegations bear the hallmarks of epic tragedy. For the first time on screen, **Winnie** explores her life and contribution to the struggle to bring down apartheid in South Africa from the inside.

**SDPB1: Monday, February 5, 9pm (8 MT)**

**SDPB2: Wednesday, February 7, 7:30pm (6:30MT)**

## American Masters – Maya Angelou: And Still I Rise

*The first feature documentary on the author/activist includes exclusive interviews with Dr. Angelou, Oprah Winfrey, Common, Bill and Hillary Clinton, and others.*

Distinctly referred to as “a redwood tree, with deep roots in American culture,” Dr. Maya Angelou (April 4, 1928-May 28, 2014) led a prolific life. As a singer, dancer, activist, poet and writer, she inspired generations with lyrical modern African-American

thought that pushed boundaries. Best known for her autobiography *I Know Why the Caged Bird Sings* (Random House), she gave people the freedom to think about their history in a way they never had before.

With unprecedented access, filmmakers Bob Hercules and Rita Coburn Whack trace Dr. Angelou's incredible journey, shedding light on the untold aspects of her life through never-before-seen footage, rare archival photographs and videos and her own words. From her upbringing in the Depression-era South and her early performing career (1957's *Miss Calypso* album and *Calypso Heat Wave* film, Jean Genet's 1961 play *The Blacks*) to her work with Malcolm X in Ghana and her many writing successes, including her inaugural poem for President Bill Clinton, **American Masters – Maya Angelou: And Still I Rise** reveals hidden facets of her life during some of America's most defining moments.

**SDPB1: Friday, February 16, 9pm (8 MT)**

**SDPB2: Saturday, February 17, 7pm (6 MT)**



Dr. Maya Angelou.

Thank You for Your Gifts  
SDPB Members Make the Difference!

## New Visionary Society Members

### Cornerstone Club

(\$25,000 or more)

Reliabank, Watertown

### Broadcast Club

(\$10,000 to \$24,999)

Charles & Kathleen Riter,

Rapid City

### Tower Club

(\$5,000 to \$9,999)

Dr. Roger & Janice Knutsen,

Rapid City

Liz & Steve McCarthy, Rapid City

### Spotlight Club

(\$2,500 to \$4,999)

Charlys Randall, Mitchell

Anonymous

### Executive Producers Club

(\$1,000 to \$2,499)

Tom & Pat Dempster, Sioux Falls

Peter Finger, Sioux Falls

Jacquelyn Fuller, Lead

James & Susan Jones, Watertown

Tim & Ellen Shirley, Rapid City

Sally & Ka Squire, Aberdeen

Anonymous

Friends of SDPB has received the following gifts:

In honor of Stephanie Grimmitt, from Jimmy & Josie Grimmitt, Sundance, WY

In honor of grandson Owen Freidel, from Daniel & Roxann Evans, Centerville

In honor of their granddaughters Solvei and Annika Knutsen-Larson, from Janice & Roger Larson

In memory of Jane Roehr, Milbank, from Brad & Carol Johnson, Watertown

In memory of Marla Behm, Canova, from Glenda Gassman, Canova

Gifts and memorials are a wonderful way to honor loved ones while supporting SDPB, which provides lifelong learning to all South Dakotans.

To learn how you can recognize or memorialize a friend or family member, please call Friends of SDPB at 800-333-0789 or visit [SDPB.org](http://SDPB.org) and click on “Support SDPB.”

## Corporate Support *Our corporate partners continue to support the excellent Television and Radio programming you have come to expect and love from SDPB.*

3M Aberdeen	Dell Rapids Chamber of Commerce	Ingalls Homestead	Regional Health	South Dakota State Historical Society
3M Brookings	Delta Dental of South Dakota	InsideOut	Regional Health Dermatology	South Dakota State University
Aberdeen Parks, Recreation & Forestry Department	Delta Dental of South Dakota Foundation	Jade Presents, LLC	Reptile Gardens	South Dakota Symphony
Abourezk Law Firm	DeMersseman, Jensen, Tellinghuisen & Huffman, LLP	James Leach, Attorney at Law	Rocklands Entertainment	Southeastern Dental Center – Dr. Daniel Goede
Acupuncture 4 Health	East Pierre Landscape & Garden Center	Jim Szana Trio	Sanford Health	Sunset Strip Pawn, Inc.
All Souls Church	Emmanuel Episcopal Church	Jolly Lane Greenhouse	SassyCat Quilts	Termosphere Gallery
Arts South Dakota	Estes Campbell Law	Lake Area Technical Institute	Schmeckfest	The Center for Western Studies
BankWest	Exceptional Artists	Laura Ingalls Wilder Pageant Society	Scully Construction Service, Inc.	The Dutch Rose Quilting Shop
Bay Leaf Café	Family Dentistry of Sioux Falls	Madison Farmers Elevator	SDN Communications	The Journey Museum & Learning Center
Black Forest Inn	Farmers Union Insurance Companies	Mahlander's	Sheraton Sioux Falls & Convention Center	The Market
Black Hills Community Theatre	First Bank and Trust	McCrary Gardens	Sioux Falls Area Community Foundation	The Sewing Center/Fabric City
Black Hills Energy	First Dakota National Bank	Media One Advertising	Sioux Falls Community Theatre	Tony Diem – World Bicycle Relief/ Twin City Animal Shelter
Black Hills Federal Credit Union	Fischer, Rounds & Associates	Mills Entertainment	Sioux Falls Seminary	Touchstone Energy Cooperative
Black Hills Film Festival	Flooring America	Missouri River Energy Services	Siouxland Heritage Museums	Turbak Law Office, PC
Black Hills Playhouse	Four Bands Community Fund	Murdo Dental – Dr. Aaron Rumpca	South Dakota Affiliate of the American College of Nurse Midwives	University of South Dakota
Black Hills Quilters Guild	Freedom Forum	North County Fiber Fair	South Dakota Agricultural Heritage Museum	Vance Thompson Vision
Black Hills State University	Freeman Academy	Northern Plains Indian Art Market	South Dakota Art Museum	Viken & Riggins Law Firm
Black Hills Symphony	Friends of Aberdeen University/ Civic Symphony	Northern State University – Fine Arts	South Dakota Bar Foundation	Washington Pavilion
Bursch Travel	Gene Hufford Agency, Inc.	NorthWestern Energy	South Dakota Community Foundation	Wildlife Protection, Inc.
Bush Foundation	Golden West	Orlando Chamber Soloists/Chamber Music Festival of the Black Hills	South Dakota Corn	Westhills Village Retirement Community
Capital Services	Good Earth Natural Foods	Orpheum Theatre	South Dakota Department of Education	Yak Ridge Cabin & Farmstead
Catholic United Financial	GoodSpirits	Pathway Investment	South Dakota Ethanol Producers Association	Xanterra Parks & Resorts
Chet Groseclose, Prof. LLC	Google	Paul Horsted, Dakota Photographic, LLC	South Dakota Hall of Fame	Xcel Energy
Children's Museum of South Dakota	Great Plains Zoo & Delbridge Museum	Performing Arts Center of Rapid City	South Dakota Humanities Council	
CO-OP Architecture	Hands Around the World	Prairie Repertory Theatre	South Dakota Quilters Guild	
Dacotah Bank	Hill City Arts Council	Presentation Sisters of Aberdeen	South Dakota Space Grant Consortium	
Dakota Plains New Holland	Horton Incorporated	Rapid City Arts Council		
Dakota State University	Hy-Vee Food Stores	Rapid City First United Methodist Church		
Davenport Evans Lawyers	Independent Insurance Agents of SD	Rapid City Medical Center		
Deadwood History (Adams Museum & House/Days of '76/ Adams Research & Cultural Center)				

## Join us in telling South Dakota's stories. Be an underwriter.

Contact the Corporate Development Manager nearest you.

**Michele Slott, West River**  
800-456-1266

**Liz Larkin, East River**  
800-456-0556



Volume 49 No. 2

### Friends of SDPB Office

PO Box 5000  
Brookings, SD 57006  
(605) 688-4191 or (800) 333-0789

Ryan Howlett, Friends CEO  
(800) 456-0556

### SDPB Administrative Office

PO Box 5000  
Vermillion, SD 57069  
(605) 677-5861 or (800) 456-0766

### SDPB Home Page

<http://www.SDPB.org>  
[press@SDPB.org](mailto:press@SDPB.org)

### SDPB Magazine & Promotion Staff

Katy Beem, Editor  
Matti Smith, Marketing Manager  
Amber Anders, Continuity Director  
Dave Foote, Promotion Producer  
Heather Benson, Social Media  
Kara Brodsky, Intern  
Krystal Schoenbauer, Intern

### Friends of SDPB Board

President Janelle Krause Toman, Pierre  
Vice President Prof. Tim Schorn, Vermillion  
Tom Manzer, Treasurer, Brookings  
Greg Blomberg, Secretary, Sioux Falls  
Wayne Carney, Fort Pierre  
Gene Ellenson, Huron  
Sue Gates, Aberdeen  
Michael Goodroad, Lead  
Thomas E. Graslie, Rapid City  
Rebecca Jirava, Brookings  
Lizabeth Manning, Spearfish  
Katrina Lehr-McKinney, Sioux Falls  
Karen Mortimer, Rapid City  
Tamara Pier, Rapid City  
Katrin Profflet, Sioux Falls  
Ron Roehr, Milbank  
John Charles Sternquist, Yankton  
Lon E. Stroshein, Sioux Falls  
**South Dakota Educational Telecommunications Board**  
Mark Shlanta, Chair, Sioux Falls  
Doyle Estes, Hill City  
Kay Jorgensen, Spearfish  
Julie Mathiesen, Sturgis  
Michael G. Rush, Regents, Pierre  
Julie Overgaard, SDPB, Vermillion  
David Zolnowsky, BIT, Pierre

### SDPB Management Team

Julie Overgaard, Executive Director  
Larry Rohrer, Director of Content  
SeVern Ashes, Engineering Director  
Bob Bosse, Television Director  
Cara Hetland, Radio Director  
Fritz Miller, Marketing Director  
Kent Osborne, Digital Director

– South Dakota Public Broadcasting is a division of the South Dakota Bureau of Information and Telecommunications.

– Friends of SDPB is a 501(c)3 organization.  
– SDPB Magazine is printed by Midstates Printing, Aberdeen, SD. Approximately 14,500 copies of the document were printed at an approximate cost of \$.36 per copy. SDPB Magazine (ISSN 1529-1596) is published and mailed monthly for \$10 per year for Friends of SDPB, 815 Medary, Brookings, SD 57006. Periodical postage paid at Brookings, SD, and additional mailing offices.

**Postmaster:** Send address changes to Friends of SDPB, Box 5000, Brookings, SD 57006. USPS 0764-400



*LATERAL QUICKNESS, AGILITY, AND SITUATIONAL  
ADAPTABILITY IN A SHARED MULTI-OFFICE NETWORK.*

# NETWORK SERVICE

A SECURITY ANALYSIS BY  
SDN COMMUNICATIONS

SDN Communications' vast, reliable broadband network paired with our managed cybersecurity services give IT professionals all the tools they need to protect and service your company's network, effectively allowing them to be in multiple locations at once.

Office  
LOCATION:  
SIOUX FALLS, SD

Office  
LOCATION:  
WATERTOWN, SD

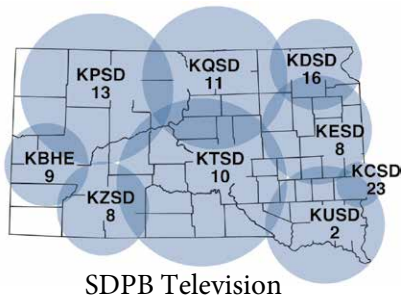
Office  
LOCATION:  
MARSHALL, MN

Office  
LOCATION:  
RAPID CITY, SD

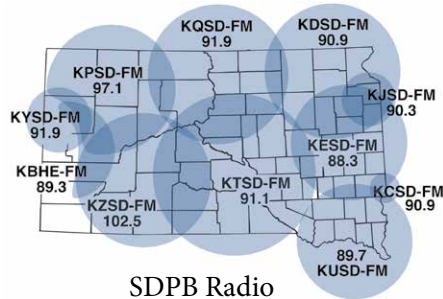


**SDN COMMUNICATIONS**

Enjoy the UPTIME. | [sdncommunications.com](http://sdncommunications.com)



SDPB Television



SDPB Radio

Live and on-demand audio and video at [SDPB.org](http://SDPB.org)



The number on the top of your address is your membership expiration date. The number on the left is your identification. Please use for membership renewals. This will reduce our processing time and speed up your service.

Printed on Recycled Paper



Photo: Roberto Chavez Arce

**NOVA *First Face of America*** takes a risky dive into an underwater cave in Mexico to discover the 13,000 year-old skeleton of a prehistoric teenager. Follow fascinating forensic clues that reveal intimate details of her life and death, and how her people first ventured into North America.

**SDPB1: Wednesday, February 7, 8pm (7 MT)**

**SDPB2: Thursday, February 8, 6pm (5 MT)**