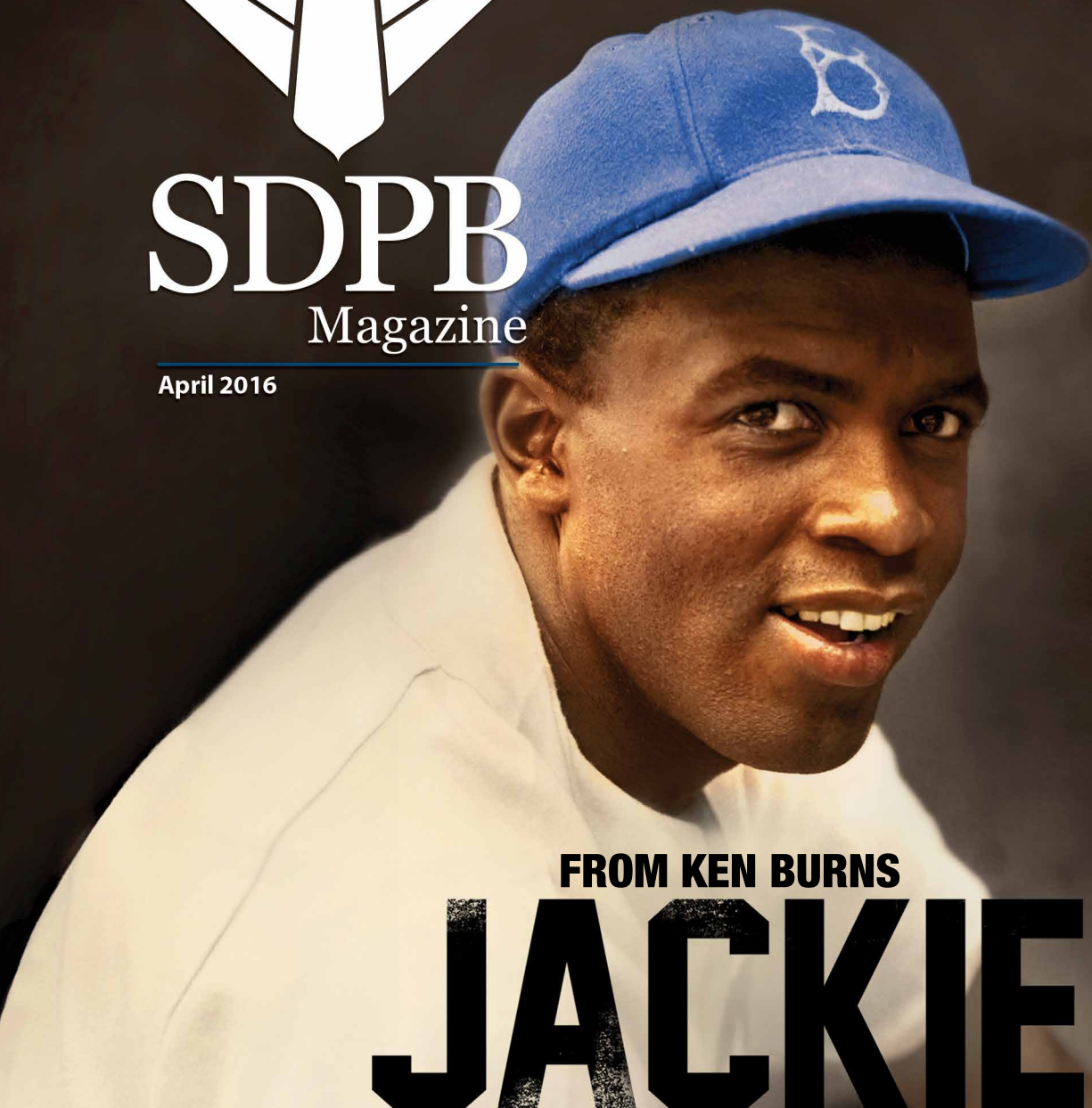




SDPB
Magazine

April 2016



FROM KEN BURNS

JACKIE ROBINSON

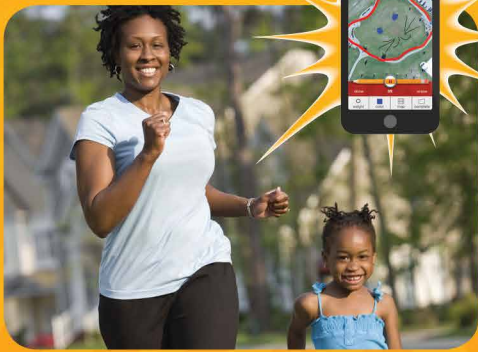
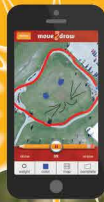
— TWO-NIGHT EVENT —

MONDAY-TUESDAY APRIL 11-12 8pm Central/7 MT

Be more.



PBS



Get ready to get *fit*!

Through *fit*, you can access and experience a suite of resources for parents and kids, all designed to help families make *fit* choices and stay healthy.

For parents

The Sanford *fit*/WebMD website gives parents the tools and resources they need to become healthy role models. Log on to explore healthy recipes, *fit* family challenges and connect with a community of parents and experts for support. Go to webmd.com/parenting/raising-fit-kids.

For kids

The website also offers an experience just for kids. Let them log on and discover entertaining and educational games, videos and challenges. No matter their age, the site has something for all kids to help them make *fit* choices every day and stay *fit* for life. Go to fit.sanfordhealth.org.

On the go

Take *fit* with you wherever you go! Though a series of free and engaging apps, you are never far away from *fit* activities. MOVE2Draw connects fun, friends and *fit* and is a simple and interactive way for kids to move and create their own unique drawings. eMOODicam helps not only capture the moment but also the emotion by allowing kids to bring their feelings to life and share with their friends in an easy-to-use app. Download in your app store today!

Visit us at sanfordhealth.org,
Keyword: *fit*



We've Got RHYTHM We've Got MUSIC



Photo: Russ Stone

Talented singers like those in Vermillion High School's show choir, Rhythm in Red, will compete on April 9th at O'Gorman High School in Sioux Falls.

For the first time ever, the South Dakota High School Activities Association is adding **Show Choir** to the roster of state-sanctioned high school competitions. A combination of choral singing, dancing, and fun, All-State show choir competition takes place April 9, 2016 at O'Gorman High School in Sioux Falls. Watch for photos, results, and information on SDPB.org and uploaded to SDPB's Twitter and Facebook feeds: #SDShowChoir16

Next, the **66th Annual South Dakota All-State Band Concert**, recorded April 2 in Watertown, will air on SDPB1 Saturday, April 23 at 8pm (7 MT) and again on Sunday, April 24 at 2pm (1 MT).

Members of the 2016 South Dakota All-State Band include top high school musicians selected during statewide competitive auditions held in January. The All-State Band consists of two groups, each performing a different repertoire and led by separate guest conductors.

Major sponsors of high school activities coverage include Dakotah Bank and SD Corn. Additional sponsors include Farmers Union Insurance Agency; SDN Communications; Independent Insurance Agents of South Dakota, and Avera. Also, Touchstone Energy Cooperatives; Sanford Health; Spearfish GMC Cadillac; Delta Dental of South Dakota; New Holland; South Dakota State University; Fischer, Rounds and Associates; Vance Thompson Vision, and Catholic United Financial.



All-State Band concert airs on SDPB1 on April 23rd.



Photo: Candy DenOuden courtesy of The Mitchell Daily Republic

Mitchell High School's show choir, Friend De Coup.

JACKIE ROBINSON, JAZZ, & NATIONAL PARKS:

KEN BURNS' TRUE, COMPLICATED AMERICA



Rachel Robinson.

Jackie Robinson
SDPB1: Part One-Monday, April
11, 8pm (7 MT) / Part Two-Tuesday,
April 12, 8pm (7 MT)
SDPB2: Part One-Saturday, April
16, 7pm (6 MT) / Part Two-Saturday,
April 23, 7pm (6MT)

Jazz
SDPB1: Fridays, April 1, 8, 15, & 22;
9pm (8 MT)

**The National Parks:
America's Best Idea**
SDPB1: Monday, April 25 through
Friday, April 29; 8pm (7 MT)



"I'm interested in listening to the voices of a true, honest, complicated past that is unafraid of controversy and tragedy, but I'm equally drawn to those stories and moments that suggest an abiding faith in the human spirit – particularly the unique role this remarkable but also sometimes dysfunctional republic seems to play in the positive progress of mankind." – Ken Burns

This spring, SDPB-TV airs three Ken Burns' films on the honest, complicated stories behind a triad of American trailblazing — Jackie Robinson's move into the major leagues, the origins of jazz music, and the radical idea of a national park system.

Jackie Robinson, Burns' latest documentary, is a two-part film premiering April 11 & April 12 on SDPB1. Called by Martin Luther King, Jr. "a sit-inner before sit-ins, a freedom rider before freedom rides," Robinson broke baseball's color barrier in 1947 when he became the first African American to play for the major leagues in the 20th century. A fierce integrationist, Robinson used his immense fame to speak out against the discrimination he saw in sports and civic life — angering some fans, the press, and even teammates who once lauded him for "turning the other cheek." The impetus for the film came from Robinson's widow, 93-year-old Rachel Robinson, who approached Burns after seeing his film **Baseball** to create a film about Jackie's lifelong fight for equality on and off the field.

Matt Zimmer, *Argus Leader* sports reporter, says it's important for Americans to know this part of sports history. "Americans have

long used sports as a way to escape from the ‘real world,’” says Zimmer. “But people like Jackie Robinson, Babe Didrikson, Jesse Owens and Jason Collins and the discrimination they faced offer reminders that the sports world isn’t immune to society’s most important issues and problems. That often forces us as Americans to look in the mirror and confront those problems.” Zimmer says aspiring sports media professionals need to be aware of Robinson’s legacy. “Even today the world of sports media remains very white and male dominated,” says Zimmer. “People often assume because minorities are well represented in sports by the athletes themselves that means equality has been achieved, but until there’s more diversity in positions of management, ownership, and media, that won’t be the case.” Robinson ushered in a new era of baseball athletically as well. “From a pure baseball standpoint, Jackie Robinson changed the game forever,” says Zimmer. “His speed, athleticism and total fearlessness can be seen in arguably the two best players of the modern era – Bryce Harper and Mike Trout.”

In addition to interviews with Rachel, Sharon and David Robinson, the film features Barack and Michelle Obama; former Dodgers teammates Don Newcombe, Carl Erskine and Ralph Branca; writers Howard Bryant and Gerald Early; Harry Belafonte; Tom Brokaw; Carly Simon, and Jamie Foxx as the voice of Jackie Robinson.

Beginning April 1, SDPB rebroadcasts Burns’ **Jazz**, a 10-part series documenting the birth and rise of jazz music in the U.S. Surveying jazz musical roots and standout stars from 1917 to 2001, the series also chronicles the struggle for civil rights and artistic recognition endured by African American pioneers like Louis Armstrong and Billie Holiday. Karl Gehrke, host of SDPB Radio’s **Jazz Nightly** and **Big Band Spotlight**, says, “Burns’ **Jazz** is a great introduction for people who are curious about the history and development of the music. It also helps explain what is so special about jazz and why it’s an important part of American culture. Jazz fans will love all of the archival footage and historic photos. I never get tired of

hearing the stories of jazz and the legends who created it. I’m happy that the series is returning to SDPB-TV.”

And starting April 25, SDPB rebroadcasts Burns’ popular film **The National Parks: America’s Best Idea**. The six-part documentary was filmed over the course of more than six years at some of the most spectacular wilderness areas in the U.S. – showcasing parks from Acadia to Yosemite, Yellowstone to the Grand Canyon, and the Florida Everglades to the Arctic Gates in Alaska. The film captures the contentious philosophies surrounding land preservation, the individuals who helped propel the parks into existence, and the national park vacation phenomenon that became a post-WWII rite-of-passage for many American families. Originally broadcast in 2009, the film won Emmy Awards for Outstanding Nonfiction Series and Outstanding Writing for Nonfiction Programming

Did you know?

- Ken Burns and his production company Florentine Films, who have been making documentaries for over 30 years, popularized the “Ken Burns Effect” – the video production technique of panning and zooming over still photographs to bring them to life. Burns agreed to let Apple founder Steve Jobs name Apple video production software the “Ken Burns Effect” in exchange for equipment donated to nonprofits.

- More than 12 years after its original broadcast, **Lewis & Clark: The Journey of the Corps of Discovery** (1997) was the most-searched-for site on PBS.org. **The Civil War** (1990) has been one of the most-used history videos in schools across the country for nearly twenty years. Resources from **Lewis & Clark**, **The West** (1996), and **The War** (2007) are consistently the “most-searched-for” by teachers.

- You can create a personal scrapbook on the Ken Burns America site, where you can clip and save images, videos, timelines, maps, bios, essays, lesson plans and more for easy future reference. Visit “My Ken Burns Experience” at PBS.org/kenburns to learn how to create your scrapbook.



Photo: Rachel Robinson
Jackie Robinson and Jackie Jr.



Photo: David S. Johnson-Library of Congress
Jackie Robinson marching for civil rights.



Photo: Craig Mellish
Old Faithful at Yellowstone.



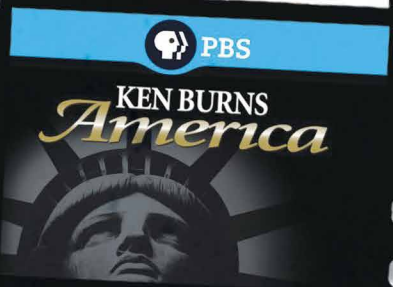
Photo: Frank Driggs Collection
Benny Goodman Trio.



Photo: Frank Driggs Collection
Buddy Petit's New Orleans Jazz Band.



Photo: Justin Altman
Ken Burns.



SDPB-TV Daytime Programming


Primetime listings on pages 8-15

SDPB1	WEEKDAYS	SATURDAYS	SUNDAYS
5am / 4 MT	Newsline	Beads, Baubles & Jewels	Dakota Life ▼
5:30/4:30 MT	Yoga	Dakota Life ▼	Dinosaur Train
6am / 5 MT	BBC World News	Barney & Friends	Sesame Street
6:30/5:30 MT	Ready Jet Go!	Caillou	Daniel Tiger's Neighborhood
7am / 6 MT	Nature Cat	Curious George	Curious George
7:30/6:30 MT	Curious George	Nature Cat	Nature Cat
8am / 7 MT	Daniel Tiger's Neighborhood	Ready Jet Go!	Ready Jet Go!
8:30/7:30 MT	Daniel Tiger's Neighborhood	Wild Kratts	Wild Kratts
9am / 8 MT	Arthur	Clifford the Big Red Dog	Sid the Science Kid
9:30/8:30 MT	Peg + Cat	Bob the Builder	Word Girl
10am / 9 MT	Dinosaur Train	It's Sew Easy	Arthur
10:30/9:30 MT	Dinosaur Train	Fons & Porter's Love of Quilting	Religion & Ethics Newsweekly
11am / 10 MT	Super Why!	Quilt in a Day	McLaughlin Group
11:30/10:30MT	Thomas & Friends	Sewing with Nancy	Market to Market
Noon / 11 MT	Sesame Street	Quilting Arts	Various
12:30/11:30MT	Cat in the Hat Knows a Lot about That	Rough Cut – Woodworking	Motorweek
1pm / Noon MT	Curious George	Woodsmith Shop	Repeat of previous Thursday 8pm (7 MT)
1:30/12:30 MT	Curious George	This Old House Hour	
2pm / 1 MT	Educational Program	Moveable Feast/ Martha Bakes (4/23)	Documentary, news, science, nature
2:30/1:30 MT	Nature Cat		
3pm / 2 MT	Ready Jet Go!		
3:30/2:30MT	Odd Squad	America's Test Kitchen	Rick Steves' Europe
4pm / 3 MT	Wild Kratts	The Victory Garden's Edible Feast	
4:30 / 3:30 MT	Cyberchase	Prairie Yard & Garden	Nature Adventures ▼
5pm / 4 MT	Martha Speaks	America's Heartland	Antiques Roadshow
5:30 / 4:30 MT	Nightly Business Report	Classic Gospel	

SDPB2	MONDAYS	TUESDAYS	WEDNESDAYS	THURSDAYS	FRIDAYS	SATURDAYS	SUNDAYS	
5am / 4 MT	Overhead w/ Smith	Global 3000	To the Contrary	Scully/World Show	Well Read	Religion & Ethics	To the Contrary	
5:30/4:30 MT	Religion & Ethics	Focus on Europe	American Forum	Second Opinion	Closer to Truth	Wealthtrack	Washington Week	
6am / 5 MT	Newsroom Tokyo	Newsroom Tokyo	Newsroom Tokyo	Newsroom Tokyo	Newsroom Tokyo	To the Contrary	McLaughlin Group	
6:30/5:30 MT						McLaughlin Group	Open Mind	
7am / 6 MT	Documentary, news, science, nature & repeats of previous day's SDPB2 primetime programming	Documentary, news, science, nature & repeats of previous day's SDPB2 primetime programming	America ReFramed followed by documentary, news, science, nature & repeats of previous day's SDPB2 primetime programming	Documentary, news, science, nature & repeats of previous day's SDPB2 primetime.	Documentary, news, science, nature & repeats of previous day's SDPB2 primetime.	Documentary, news, science, nature & repeats of previous day's SDPB2 primetime.	Documentary, news, science, nature & repeats of previous day's SDPB2 primetime programming	
7:30/6:30 MT						Focus on Europe		Global 3000
8am / 7 MT								
8:30/7:30 MT								
9am / 8 MT								
9:30/8:30 MT								
10am / 9 MT								
10:30/9:30 MT	Local USA	Wealthtrack						
11am / 10 MT	On Call ▼	Tavis Smiley	SD Focus ▼	Tavis Smiley	Tavis Smiley	Religion & Ethics	Documentary, news, science, nature	
11:30/10:30MT		Tavis Smiley (4/13)	Tavis Smiley	Tavis Smiley				
Noon / 11 MT	Overhead w/ Smith	Global 3000	To the Contrary	Scully/World Show	Well Read	History, Documentary & repeats of top programming from previous week	Documentary, news, science, nature	
12:30/11:30MT	Religion & Ethics	Focus on Europe	American Forum	Second Opinion	Closer to Truth			
1pm / Noon MT	Documentary, news, science, nature & repeats of previous day's SDPB2 primetime programming	Standing on Sacred Ground	America ReFramed	Documentary, news, science, nature & repeats of previous day's SDPB2 primetime.	Documentary, news, science, nature & repeats of previous day's SDPB2 primetime.			
1:30/12:30 MT		Pacific Heartbeat						
2pm / 1 MT			Local USA					
2:30/1:30 MT								
3pm/2 MT								
3:30/2:30MT		Local USA	Documentary, news, science, nature & repeats					
4pm / 3 MT	SD Focus ▼	Newsline	On Call ▼	Newsline	Newsline	To The Contrary	Documentary	
4:30/ 3:30 MT		DW News		DW News	DW News	Washington Week		
5pm / 4 MT	Local USA	Documentary	Documentary	Documentary	Documentary	NewsHour Wkend	NewsHour Wkend	
5:30/ 4:30 MT	On Story					Charlie Rose	Documentary	

Create – SDPB3 Programming

SDPB3	SUNDAY & WEDNESDAY		MONDAY & FRIDAY	TUESDAY & THURSDAY	SATURDAY THEME DAYS
5am / 4 MT	Fit 2 Stitch		F&P's Love of Quilting	Knit & Crochet Now!	April 2 "Scenes from an Italian Restaurant"
5:30/4:30 MT	Scheewe Art Workshop		Paint This with Jerry Yarnell	Joy of Painting	
6am / 5 MT	Bake Decorate Celebrate!		Sara's Weeknight Meals	George Hirsch Lifestyle	
6:30/5:30 MT	Secrets of a Chef/ Mexico One Plate at a Time (4/13)		Steve Raichlen's Project Smoke	P. Allen Smith's Garden to Table	
7am / 6 MT	Healthful Indian Flavors		Chef John Besh's Family Table	Dining with the Chef	
7:30/6:30 MT	Ciao Italia		New Scandinavian Cooking	Christina Cooks	
8am / 7 MT	Wild Photo Adventures		Pedal America	Smart Travels	
8:30/7:30 MT	Travels to the Edge/Journeys in Japan (4/10)		Travelscope	Islands Without Cars	
9am / 8 MT	Lakota Berenstain Bears	Ask This Old House	This Old House	Hometime	
9:30/8:30 MT	American Woodshop		Rough Cut – Woodworking	Woodsmith Shop	
10am / 9 MT	Grow a Greener World		P. Allen Smith's Garden Home	The Victory Garden's Edible Feast	April 9 "Wine & Cheese Pairing"
10:30/9:30 MT	Beads, Babules & Jewels		Start Up	Urban Conversion	
11am / 10 MT	Cooking	Fit 2 Stitch	F&P's Love of Quilting	Knit & Crochet Now!	
1:30/10:30MT	Cooking	Scheewe Art Workshop	Paint This with Jerry Yarnell	Joy of Painting	
Noon / 11 MT	Odd Squad	Bake Decorate Celebrate!	Sara's Weeknight Meals	George Hirsch Lifestyle	
12:30/11:30MT	Odd Squad	Secret of a Chef	Steve Raichlen's Project Smoke	P. Allen Smith's Garden to Table	
1pm/ Noon MT	Arthur	Healthful Indian Flavors	Chef John Besh's Family Table?	Dining with the Chef	
1:30/12:30 MT	Cyberchase	Ciao Italia	New Scandinavian Cooking	Christina Cooks	
2pm/ 1 MT	Word Girl	Wild Photo Adventures	Pedal America	Smart Travels	
2:30/1:30 MT	Sesame Street	Journeys in Japan	Travelscope	Islands Without Cars	
3pm/2 MT	Peg + Cat	Rick Steves' Europe	Rick Steves' Europe	Rick Steves' Europe	Signing Time!
3:30/2:30MT	Barney & Friends	American Woodshop	Rough Cut – Woodworking	Woodsmith Shop	Biz Kid\$
4pm/ 3 MT	Mister Rogers	Garden Smart	P. Allen Smith's Garden Home	The Victory Garden's Edible Feast	Zula Patrol
4:30/3:30MT	Berenstain Bears	Beads, Baubles, & Jewels	Start Up	Urban Conversion	Space Racers
5pm / 4 MT	Clifford	This Old House	This Old House	Hometime	SciGirls
5:30/4:30 MT	Hands on Crafts	Jacques Pepin	Jacques Pepin: Heart & Soul	Jacques Pepin: Heart & Soul	Arthur
6pm / 5 MT	Annabel Langbein: The Free Range		Simply Ming	JoAnne Weir Gets Fresh	WordGirl
6:30/5:30 MT	Essential Pepin		Jacques Pepin: More Fast Food	Baking with Julia	Wild Kratts
7pm / 6 MT	Martha Bakes	Lidia's Kitchen	Lidia's Kitchen	Martha Bakes	Little Amadeus
7:30/6:30 MT	America's Test Kitchen	Cook's Country	Cook's Country	America's Test Kitchen	Zoboomafoo
8pm / 7 MT	Chef's Life	Moveable Feast	Moveable Feast	Chef's Life	Martha Speaks
8:30/7:30 MT	Jacques Pepin: Heart & Soul		Jacques Pepin: Heart & Soul	Jacques Pepin: Heart & Soul	Nature Adven. 
9pm / 8 MT	This Old House		This Old House	Hometime	April 2 "Scenes from an Italian Restaurant"
9:30/8:30 MT	Rick Steves'		Globe Trekker/Bang's Adventure (4/8)	Travelscope	
10pm / 9 MT	Curious Traveler			Journeys in Africa	
10:30/9:30 MT	Martha Bakes	Lidia's Kitchen	Lidia's Kitchen	Martha Bakes	
11pm / 10 MT	America's Test Kitchen	Cook's Country	Cook's Country	America's Test Kitchen	
11:30/10:30MT	Annabel Langbein: The Free Range		Simply Ming	JoAnne Weir Gets Fresh	
Mid./ 11 MT	Bake Decorate Celebrate!		Sara's Weeknight Meals	George Hirsch Lifestyle	
12:30/11:30MT	Music Voyager		Painting the Town	Art Wolfe's Travels to the Edge	
1am/Mid. MT	Lidia's Kitchen	Martha Bakes	Martha Bakes	Lidia's Kitchen	
1:30/12:30 MT	America's Test Kitchen		America's Test Kitchen	Cook's Country	
2am/ 1 MT	Smoke/Feast	Chef's Life	Chef's Life	Moveable Feast	Test Kitchen
2:30/1:30 MT	Jacques Pepin: Heart & Soul		Jacques Pepin: Heart & Soul	Jacques Pepin: Heart & Soul	Simply Ming
3am/2 MT	This Old House	Hometime	Hometime	This Old House	Lifestyle
3:30/2:30MT	Globe Trekker/ Bang's Adventures (4/17)	Travel Scope	Travelscope	Globe Trekker/ Bang's Adventures (4/12)	Travel to Edge
4am/3 MT	Lidia's Kitchen	Journeys in Africa	Journeys in Africa	Curious Traveler	Lidia's Kitchen
4:30/3:30 MT		Martha Bakes	Martha Bakes	Lidia's Kitchen	

- SDPB Television programs are Closed Captioned for the Hearing Impaired.
- Schedule is subject to change. Visit SDPB.org/tvschedules for program details and schedule changes.
-  Indicates locally produced programming.
- SDPB2 and SDPB3 are available free over-the-air via antenna and on most cable systems. Call your local provider to find out where you can find them on your cable system.

FRIDAY – APRIL 1

SDPB1

- 6:00 (5:00 MT) **PBS NewsHour**
- 7:00 (6:00 MT) **Washington Week**
- 8:00 (7:00 MT) **McLaughlin Group**
- 8:30 (7:30 MT) **Market to Market**
- 9:00 (8:00 MT) **Jazz Gumbo** (*Beginning to 1917*)
- 10:30 (9:30 MT) **Jazz The Gift** (1917-1924)

SDPB2

- 6:00 (5:00 MT) **Al Capone: Icon**
- 7:00 (6:00 MT) **Secrets of the Dead** *The Alcatraz Escape*
- 8:00 (7:00 MT) **Secrets of the Dead** *JFK: One PM Central Standard*
- 9:00 (8:00 MT) **PBS NewsHour**
- 10:00 (9:00 MT) **Nightly Business Report**
- 10:30 (9:30 MT) **Asia Insight**
- 11:00 (10:00 MT) **Al Capone: Icon**
- Midnight (11:00 MT) **Secrets of the Dead** *The Alcatraz Escape*

SATURDAY – APRIL 2

SDPB1

- 6:00 (5:00 MT) **Lawrence Welk Show**
- 7:00 (6:00 MT) **Doc Martin**
- 8:00 (7:00 MT) **Keeping Up Appearances**
- 8:30 (7:30 MT) **As Time Goes By**
- 9:00 (8:00 MT) **Father Brown**
- 10:00 (9:00 MT) **No Cover, No Minimum**
Brian Macek and Friends
- 11:00 (10:00 MT) **Austin City Limits** *Beck*
- Midnight (11:00 MT) **Live from the Artists Den**
Lily Allen

SDPB2

- 6:00 (5:00 MT) **Focus on Europe**
- 6:30 (5:30 MT) **Global 3000**
- 7:00 (6:00 MT) **Olmsted and America's Urban Parks**
- 9:00 (8:00 MT) **America ReFramed** *Dog Days*
- 10:30 (9:30 MT) **Erma Bombeck: Legacy of Laughter**
- 11:00 (10:00 MT) **Olmsted and America's Urban Parks**
- Midnight (11:00 MT) **Frederick Law Olmsted: Designing**



Photo: Johnathan Hillier

Lyndhurst is the gothic castle on the Hudson River built by former New York City mayor William Paulding as a retreat from the industrialized city. In **10 Homes That Changed America**, visit homes that transformed residential living, from grand estates like Thomas Jefferson's Monticello and Frank Lloyd Wright's Fallingwater to the pueblos of Taos, New Mexico and the tenements of 19th-century New York.

SDPB1: Tuesday, April 5, 7pm (6 MT)

Patsy (Emerald Fennell), Trixie (Helen George) and Barbara (Charlotte Ritchie) return for Season 5 of the gripping drama **Call the Midwife**. It's 1961 and Poplar is beginning to feel the winds of social change, along with improvements in housing, sanitation and healthcare. The nurses and midwives face complex, challenging cases, including two babies born with severe deformities.

SDPB1: Sundays, April 3, 10, 17 & 24, 7pm (6 MT)



Photo: Red Productions Ltd 2015

SUNDAY – APRIL 3

SDPB1

- 1:00 (Noon MT) **South Dakota Focus**
Senator Mike Rounds
- 2:00 (1:00 MT) **Life of Jesus Christ 2016**
- 3:00 (2:00 MT) **Magic of the Diary of Anne Frank**
- 4:00 (3:00 MT) **Rick Steves' Europe** *France's Loire: Chateau Country*
- 4:30 (3:30 MT) **Nature Adventures** *Wildlife of Rio Grande Valley*
- 5:00 (4:00 MT) **Antiques Roadshow** *Tucson*
- 6:00 (5:00 MT) **Midsomer Murders**
- 7:00 (6:00 MT) **Call the Midwife**
- 8:00 (7:00 MT) **Masterpiece** *Grantchester*
- 9:00 (8:00 MT) **Masterpiece** *Mr. Selfridge*
- 10:00 (9:00 MT) **Chris Tarrant: Extreme Railways**
- 11:00 (10:00 MT) **Globe Trekker** *Delhi & Agra*
- Midnight (11:00 MT) **Washington Week**

SDPB2

- 1:00 (Noon MT) **To the Contrary**
- 1:30 (12:30 MT) **Washington Week**
- 2:00 (1:00 MT) **McLaughlin Group**
- 3:00 (2:00 MT) **Focus on Europe**
- 3:30 (2:30 MT) **Global 3000**
- 4:00 (3:00 MT) **Temples of Justice**
- 5:00 (4:00 MT) **PBS NewsHour Weekend**
- 5:30 (4:30 MT) **Erma Bombeck: Legacy of Laughter**
- 6:00 (5:00 MT) **Eyes on the Prize** *Ain't Gonna Shuffle No More*
- 7:00 (6:00 MT) **Eyes on the Prize** *A Nation of Law?*
- 8:00 (7:00 MT) **Nature** *Animal Reunions*
- 9:00 (8:00 MT) **Global Voices** *Diamond in the Dunes*
- 10:00 (9:00 MT) **Little League: A History**

11:00 (10:00 MT) **Eyes on the Prize** *A Nation of Law?*

Midnight (11:00 MT) **Nature** *Animal Reunions*

MONDAY – APRIL 4

SDPB1

- 6:00 (5:00 MT) **PBS NewsHour**
- 7:00 (6:00 MT) **Antiques Roadshow** *Tucson*
- 8:00 (7:00 MT) **Antiques Roadshow** *Detroit*
- 9:00 (8:00 MT) **Independent Lens** *Welcome to Leith*
- 10:00 (9:00 MT) **BBC World News**
- 11:00 (10:00 MT) **Charlie Rose**
- Midnight (11:00 MT) **Tavis Smiley**

SDPB2

- 6:00 (5:00 MT) **Standing on Sacred Ground**
- 7:00 (6:00 MT) **Pacific Heartbeat**
- 8:00 (7:00 MT) **Local USA** *Urban Gardening*
- 8:30 (7:30 MT) **On Story** *Frank Darabont: Filmmaker's Journey*
- 9:00 (8:00 MT) **PBS NewsHour**
- 10:00 (9:00 MT) **Nightly Business Report**
- 10:30 (9:30 MT) **Religion & Ethics Newsweekly**
- 11:00 (10:00 MT) **Standing on Sacred Ground**
- Midnight (11:00 MT) **Pacific Heartbeat**

TUESDAY – APRIL 5

SDPB1

- 6:00 (5:00 MT) **PBS NewsHour**
- 7:00 (6:00 MT) **10 Homes that Changed America**
- 8:00 (7:00 MT) **Secrets of Saint John Paul**
- 9:00 (8:00 MT) **Frontline** *Putin's Way*
- 10:00 (9:00 MT) **Keeping Up Appearances**
- 10:30 (9:30 MT) **BBC World News**
- 11:00 (10:00 MT) **Charlie Rose**
- Midnight (11:00 MT) **Point Taken**

(April 5, continued)

SDPB2

6:00 (5:00 MT) **Eyes on the Prize: Then and Now**

7:00 (6:00 MT) **America ReFramed Children of the Arctic**

9:00 (8:00 MT) **PBS NewsHour**

10:00 (9:00 MT) **Nightly Business Report**

10:30 (9:30 MT) **Global 3000**

11:00 (10:00 MT) **America ReFramed Children of the Arctic**

WEDNESDAY – APRIL 6

SDPB1

6:00 (5:00 MT) **PBS NewsHour**

7:00 (6:00 MT) **Nature Saving Otter 501**

8:00 (7:00 MT) **NOVA Can Alzheimer's be Stopped?**

9:00 (8:00 MT) **Ride the Tiger**

10:00 (9:00 MT) **Vicious**

10:30 (9:30 MT) **BBC World News**

11:00 (10:00 MT) **Charlie Rose**

Midnight (11:00 MT) **Tavis Smiley**

SDPB2

6:00 (5:00 MT) **Eyes on the Prize: Then and Now**

6:30 (5:30 MT) **Independent Lens Welcome to Leith**

8:00 (7:00 MT) **Frontline Putin's Way**

9:00 (8:00 MT) **PBS NewsHour**

10:00 (9:00 MT) **Nightly Business Report**

10:30 (9:30 MT) **Focus on Europe**

11:00 (10:00 MT) **Eyes of the Prize: Then and Now**

11:30 (10:30 MT) **Independent Lens Welcome to Leith**



Photo: Des Willies/Lovely Day for ITV and MASTERPIECE

BAFTA nominee James Norton stars as Anglican priest and former Scots Guard officer Sidney Chambers and Robson Green is wizened Inspector Geordie Keating in **Masterpiece's Grantchester**. Together, the sensitive vicar and the hard-bitten cop make perfect crime-solving partners in the English countryside's idyllic 1950s village of *Grantchester*. The new season focuses on matchmaking and murder.

SDPB1: Sundays, April 3, 10, 17 & 24, 8pm (7 MT)

Alzheimer's ravages the minds of over 40 million victims worldwide. On **NOVA: Can Alzheimer's Be Stopped?**, join scientists as they untangle the cause of this tragic illness and go behind the scenes of major drug trials to discover the therapies that may slow and even prevent the disease.

SDPB1: Wednesday, April 6, 8pm (7 MT)

SDPB2: Thursday, April 7, 6 & 11pm (5 & 10 MT)

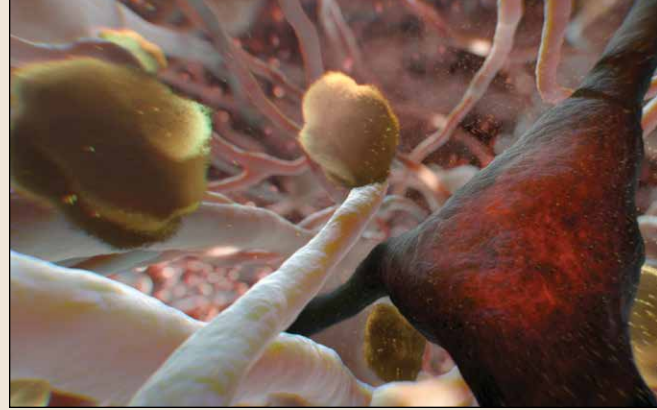


Photo: NOVA

THURSDAY – APRIL 7

SDPB1

6:00 (5:00 MT) **PBS NewsHour**

7:00 (6:00 MT) **On Call** **The Skin-Body Connection**

8:00 (7:00 MT) **Dakota Life** **Food & Fun**

8:30 (7:30 MT) **Wind Beneath Your Wings**

9:00 (8:00 MT) **Doc Martin**

10:00 (9:00 MT) **Detectorists**

10:30 (9:30 MT) **BBC World News**

11:00 (10:00 MT) **Charlie Rose**

Midnight (11:00 MT) **Tavis Smiley**

SDPB2

6:00 (5:00 MT) **NOVA Can Alzheimer's be Stopped?**

7:00 (6:00 MT) **Ride the Tiger**

8:00 (7:00 MT) **Global Health Frontiers Medical Brigades, Asia Lights Up**

9:00 (8:00 MT) **PBS NewsHour**

10:00 (9:00 MT) **Nightly Business Report**

10:30 (9:30 MT) **Scully/The World Show**

11:00 (10:00 MT) **NOVA Can Alzheimer's be Stopped?**

Midnight (11:00 MT) **Ride the Tiger**

FRIDAY – APRIL 8

SDPB1

6:00 (5:00 MT) **PBS NewsHour**

7:00 (6:00 MT) **Washington Week**

7:30 (6:30 MT) **Charlie Rose – The Week**

8:00 (7:00 MT) **McLaughlin Group**

8:30 (7:30 MT) **Market to Market**

9:00 (8:00 MT) **Jazz Our Language (1924-28)**

11:00 (10:00 MT) **Jazz The True Welcome (1929-35)**

SDPB2

6:00 (5:00 MT) **Secrets of the Dead The Lost Gardens of Babylon**

7:00 (6:00 MT) **Secrets of the Dead The Real Trojan Horse**

8:00 (7:00 MT) **Secrets of the Dead Carthage's Lost Warriors**

9:00 (8:00 MT) **PBS NewsHour**

10:00 (9:00 MT) **Nightly Business Report**

10:30 (9:30 MT) **Asia Insight**

11:00 (10:00 MT) **Secrets of the Dead The Lost Gardens of Babylon**

Midnight (11:00 MT) **Secrets of the Dead The Real Trojan Horse**

SATURDAY – APRIL 9

SDPB1

6:00 (5:00 MT) **Lawrence Welk Show**

7:00 (6:00 MT) **Doc Martin**

8:00 (7:00 MT) **Keeping Up Appearances**

8:30 (7:30 MT) **As Time Goes By**

9:00 (8:00 MT) **Father Brown**

10:00 (9:00 MT) **No Cover, No Minimum**
S.D. Rock 'N Roll Hall of Fame

11:00 (10:00 MT) **Austin City Limits Nine Inch Nails**

Midnight (11:00 MT) **Live from the Artists Den Jason Mraz**

SDPB2

6:00 (5:00 MT) **Focus on Europe**

6:30 (5:30 MT) **Global 3000**

7:00 (6:00 MT) **Pacific Heartbeat There Once was An Island – Te Henua e Nnho**

8:00 (7:00 MT) **Pacific Heartbeat Na Loea: The Masters II**

9:00 (8:00 MT) **America ReFramed Children of the Arctic**

11:00 (10:00 MT) **Pacific Heartbeat There Once was An Island – Te Henua e Nnho**

Midnight (11:00 MT) **Pacific Heartbeat Na Loea: The Masters II**

SUNDAY – APRIL 10

SDPB1

1:00 (Noon MT) **Dakota Life** **Food & Fun**

1:30 (12:30 MT) **Wind Beneath Your Wings**

2:00 (1:00 MT) **Escape in the Pacific**

3:00 (2:00 MT) **Maggie's War: A True Story of Courage, Leadership and Valor in WWII**

4:00 (3:00 MT) **Rick Steves' Europe Paris Sidetrips**

4:30 (3:30 MT) **Nature Adventures** **Top 10 Destinations**

5:00 (4:00 MT) **Antiques Roadshow Tucson**

6:00 (5:00 MT) **Midsomer Murders**

7:00 (6:00 MT) **Call the Midwife**

8:00 (7:00 MT) **Masterpiece Grantchester**

9:00 (8:00 MT) **Masterpiece Mr. Selfridge**

10:00 (9:00 MT) **Chris Tarrant: Extreme Railways**

11:00 (10:00 MT) **Globe Trekker Wild West USA**

Midnight (11:00 MT) **Washington Week**

SDPB2

1:00 (Noon MT) **To the Contrary**

1:30 (12:30 MT) **Great Performances at the Met Lulu**

5:00 (4:00 MT) **PBS NewsHour Weekend**

6:00 (5:00 MT) **Eyes on the Prize A Nation of Law? (1968-71)**

7:00 (6:00 MT) **Eyes on the Prize The Keys to the Kingdom (1974-80)**

8:00 (7:00 MT) **Secrets of Saint John Paul**

9:00 (8:00 MT) **Global Voices Ice People**

10:30 (9:30 MT) **Native Waters: A Chitimacha Recollection**

11:00 (10:00 MT) **Eyes on the Prize The Keys to the Kingdom (1974-80)**

Midnight (11:00 MT) **Secrets of Saint John Paul**



Photo: Omar Adam Khan

Three cubs drink from a watering hole. On **Nature India's Wandering Lions**, witness the incredible story of Asia's last wild lions, once on the brink of extinction, but who now live dangerously close to the villagers of India.

SDPB1: Wednesday, April 13, 7pm (6 MT)

SDPB2: Sunday, April 17, 8pm & Midnight (7 & 11pm MT)

MONDAY – APRIL 11

SDPB1

6:00 (5:00 MT) PBS NewsHour
7:00 (6:00 MT) Antiques Roadshow Tucson
8:00 (7:00 MT) Jackie Robinson Part One
10:00 (9:00 MT) Jackie Robinson Part One
Midnight (11:00 MT) Tavis Smiley

SDPB2

6:00 (5:00 MT) Standing on Sacred Ground
7:00 (6:00 MT) Pacific Heartbeat
8:00 (7:00 MT) Local USA Living the Dream
8:30 (7:30 MT) On Story James Franco: A Look inside 127 Hours
9:00 (8:00 MT) PBS NewsHour
10:00 (9:00 MT) Nightly Business Report
10:30 (9:30 MT) Religion & Ethics Newsweekly
11:00 (10:00 MT) Standing on Sacred Ground
Midnight (11:00 MT) Pacific Heartbeat

TUESDAY—APRIL 12

SDPB1

6:00 (5:00 MT) PBS NewsHour
7:00 (6:00 MT) 10 Parks that Changed America
8:00 (7:00 MT) Jackie Robinson Part Two
10:00 (9:00 MT) Jackie Robinson Part Two
Midnight (11:00 MT) Tavis Smiley

SDPB2

6:00 (5:00 MT) Quietest Place on Earth
7:00 (6:00 MT) America ReFramed
9:00 (8:00 MT) PBS NewsHour
10:00 (9:00 MT) Nightly Business Report
10:30 (9:30 MT) Global 3000
11:00 (10:00 MT) America ReFramed

WEDNESDAY – APRIL 13

SDPB1

6:00 (5:00 MT) PBS NewsHour
7:00 (6:00 MT) Nature India's Wandering Lions
8:00 (7:00 MT) NOVA Vikings Unearthed
10:00 (9:00 MT) Vicious
10:30 (9:30 MT) BBC World News
11:00 (10:00 MT) Charlie Rose
Midnight (11:00 MT) Tavis Smiley

SDPB2

6:00 (5:00 MT) Far Afield: A Conservation Love Story
6:30 (5:30 MT) Independent Lens The Great Invisible
8:00 (7:00 MT) Ocean Frontiers: The Dawn of a New Ocean Stewardship
9:00 (8:00 MT) PBS NewsHour
10:00 (9:00 MT) Nightly Business Report
10:30 (9:30 MT) Focus on Europe
11:00 (10:00 MT) Far Afield: A Conservation Love Story
Midnight (11:00 MT) Independent Lens The Great Invisible

THURSDAY – APRIL 14

SDPB1

6:00 (5:00 MT) PBS NewsHour
7:00 (6:00 MT) On Call *Bleeding Ulcers and the Upper Digestive System*
8:00 (7:00 MT) South Dakota Focus *Legislative Review*
8:30 (7:30 MT) Wind Beneath Your Wings
9:00 (8:00 MT) Doc Martin
10:00 (9:00 MT) Detectors
10:30 (9:30 MT) BBC World News
11:00 (10:00 MT) Charlie Rose
Midnight (11:00 MT) Tavis Smiley

SDPB2

6:00 (5:00 MT) NOVA Vikings Unearthed

8:00 (7:00 MT) Global Health Frontiers Hidden Hunger, Golden Rice, Life Saving Stoves

9:00 (8:00 MT) PBS NewsHour

10:00 (9:00 MT) Nightly Business Report

10:30 (9:30 MT) Scully/The World Show

11:00 (10:00 MT) NOVA Vikings Unearthed

FRIDAY – APRIL 15

SDPB1

6:00 (5:00 MT) PBS NewsHour
7:00 (6:00 MT) Washington Week
7:30 (6:30 MT) Charlie Rose – The Week
8:00 (7:00 MT) McLaughlin Group
8:30 (7:30 MT) Market to Market
9:00 (8:00 MT) Jazz Swing: Pure Pleasure (1935-37)
10:30 (9:30 MT) BBC World News
11:00 (10:00 MT) Charlie Rose
Midnight (11:00 MT) Tavis Smiley

SDPB2

6:00 (5:00 MT) 10 Parks that Changed America
7:00 (6:00 MT) Jens Jensen—The Living Green
8:00 (7:00 MT) America's First Forest: Carl Schenck & The Asheville Experiment
9:00 (8:00 MT) PBS NewsHour
10:00 (9:00 MT) Nightly Business Report
10:30 (9:30 MT) Asia Insight
11:00 (10:00 MT) 10 Parks that Changed America
Midnight (11:00 MT) Jens Jensen—The Living Green

SATURDAY – APRIL 16

SDPB1

6:00 (5:00 MT) Lawrence Welk Show
7:00 (6:00 MT) Doc Martin
8:00 (7:00 MT) Keeping Up Appearances
8:30 (7:30 MT) As Time Goes By
9:00 (8:00 MT) Father Brown
10:00 (9:00 MT) No Cover, No Minimum *Terrace Simien & The Zydeco Experience*
11:00 (10:00 MT) Austin City Limits Tweedy
Midnight (11:00 MT) Live from the Artists Den *Zac Brown Band*

SDPB2

6:00 (5:00 MT) Focus on Europe
6:30 (5:30 MT) Global 3000
7:00 (6:00 MT) Jackie Robinson Part 1 of 2
9:00 (8:00 MT) America ReFramed Children of the Arctic
11:00 (10:00 MT) Jackie Robinson Part 1 of 2




Photo: ITV Studios Limited 2016 for MASTERPIECE

Emma Hamilton as Rosie Dolly, Trystan Gravelle as Victor Colleano, Jeremy Piven as Harry Selfridge and Katherine Kelly as Lady Mae. As creditors close in, can Harry seal the deal that will save his mercantile empire? Jeremy Piven (*Entourage*) stars in the thrilling final season of **Masterpiece's Mr. Selfridge**, which dramatizes the climactic battle for the future of London's iconic department store, Selfridge & Co.
SDPB1: Sundays, April 3, 10, 17 & 24, 9pm (8 MT)

SUNDAY – APRIL 17


SDPB1

1:00 (Noon MT) **South Dakota Focus** 
Legislative Review

2:00 (1:00 MT) **Rebels with a Cause**

3:00 (2:00 MT) **Seeking the Greatest Good**

4:00 (3:00 MT) **Rick Steves' Europe The Best of Israel**

4:30 (3:30 MT) **Nature Adventures**  *Wildlife Rehabilitation & Education*

5:00 (4:00 MT) **Antiques Roadshow Tucson**

6:00 (5:00 MT) **Midsomer Murders**

7:00 (6:00 MT) **Call the Midwife**

8:00 (7:00 MT) **Masterpiece Grantchester**

9:00 (8:00 MT) **Masterpiece Mr. Selfridge**

10:00 (9:00 MT) **Chris Tarrant: Extreme Railways**

11:00 (10:00 MT) **Globe Trekker Food Hour: Sicily**

Midnight (11:00 MT) **Washington Week**

SDPB2

1:00 (Noon MT) **To the Contrary**

1:30 (12:30 MT) **Washington Week**

2:00 (1:00 MT) **McLaughlin Group**

5:00 (4:00 MT) **PBS NewsHour Weekend**

6:00 (5:00 MT) **Eyes on the Prize The Keys to the Kingdom (1974-1980)**

7:00 (6:00 MT) **Eyes on the Prize Back to the Movement (1977-Mid 1980s)**

8:00 (7:00 MT) **Nature India's Wandering Lions**

9:00 (8:00 MT) **Global Voices**

10:30 (9:30 MT) **Global Voices**

11:00 (10:00 MT) **Eyes on the Prize Back to the movement (1977-Mid 1980s)**

Midnight (11:00 MT) **Nature India's Wandering Lions**

MONDAY – APRIL 18

SDPB1

6:00 (5:00 MT) **PBS NewsHour**

7:00 (6:00 MT) **Antiques Roadshow Omaha**

8:00 (7:00 MT) **Antiques Roadshow Detroit**

9:00 (8:00 MT) **Independent Lens Democrats/Soft Vengeance**

11:00 (10:00 MT) **Charlie Rose**

Midnight (11:00 MT) **Tavis Smiley**

SDPB2

6:00 (5:00 MT) **Standing on Sacred Ground**

7:00 (6:00 MT) **Pacific Heartbeat**

8:00 (7:00 MT) **Local USA Drive Like A Girl**

8:30 (7:30 MT) **On Story John Singleton's Classic Influences**

9:00 (8:00 MT) **PBS NewsHour**

10:00 (9:00 MT) **Nightly Business Report**

10:30 (9:30 MT) **Religion & Ethics Newsweekly**

11:00 (10:00 MT) **Standing on Sacred Ground**

Midnight (11:00 MT) **Pacific Heartbeat**

TUESDAY – APRIL 19

SDPB1

6:00 (5:00 MT) **PBS NewsHour**

7:00 (6:00 MT) **10 Towns that Changed America**

8:00 (7:00 MT) **Shakespeare's Curse**

9:00 (8:00 MT) **Frontline Children of Syria**

10:00 (9:00 MT) **Keeping Up Appearances**

10:30 (9:30 MT) **BBC World News**

11:00 (10:00 MT) **Charlie Rose**

Midnight (11:00 MT) **Point Taken**

SDPB2

6:00 (5:00 MT) **Bitter Seeds**

7:00 (6:00 MT) **America ReFramed**

9:00 (8:00 MT) **PBS NewsHour**

10:00 (9:00 MT) **Nightly Business Report**

10:30 (9:30 MT) **Global 3000**

11:00 (10:00 MT) **America ReFramed**



Photo: Frontline

FRONTLINE *Children of Syria* tells the story of four children surviving in war-torn Aleppo, and their escape to a new life in Germany. The film follows the family over three years, from the siege of their city, to the kidnapping of their father, to the struggle of becoming refugees.

SDPB1: Tuesday, Apr. 19, 9pm (8 MT)

WEDNESDAY – APRIL 20

SDPB1

6:00 (5:00 MT) **PBS NewsHour**

7:00 (6:00 MT) **Nature Leave It to Beavers**

8:00 (7:00 MT) **NOVA Wild Ways**

9:00 (8:00 MT) **Best of Big Blue LIVE**

10:00 (9:00 MT) **Vicious**

10:30 (9:30 MT) **BBC World News**

11:00 (10:00 MT) **Charlie Rose**

Midnight (11:00 MT) **Tavis Smiley**

SDPB2

6:00 (5:00 MT) **Independent Lens Democrats/Soft Vengeance**

8:00 (7:00 MT) **Frontline Children of Syria**

9:00 (8:00 MT) **PBS NewsHour**

10:00 (9:00 MT) **Nightly Business Report**

10:30 (9:30 MT) **Focus on Europe**

11:00 (10:00 MT) **Independent Lens**

Democrats/Soft Vengeance

(continued on page 14)



A woman is surprised by the appraisal she receives on a painting as **Antiques Roadshow** travels to Omaha.

SDPB1: Monday, April 18, 7pm (6 MT); Sunday, April 24, 5pm (4 MT); Monday, April 25, 7pm (6 MT)



On the set of **South Dakota Focus**.

South Dakota Focus: Legislative Review and Political Junkies

On Thursday, April 14 at 8pm (7 MT) **South Dakota Focus** host Stephanie Rissler and guests review the votes, vetoes, and issues from the 2016 South Dakota Legislative session which wrapped up in March.

And on Thursday, April 21, at 8pm (7MT) Stephanie talks elections and issues on our Political Junkies show. Scheduled guests include J. P. Skelly, News Director for 1490 KORN News Radio out of Mitchell and *Rapid City Journal's* Enterprise Reporter Seth Tupper.

Viewers are encouraged to join the live program discussions with comments and questions.

Phone: 877-825-5788

Email: sdfocus@sdpb.org

Facebook: [facebook.com/SDFocus](https://www.facebook.com/SDFocus)

Twitter: @StephanieSDPB



J.P. Skelly.



Seth Tupper.



Dakota Life explores urban beekeeping in Rapid City.

Dakota Life: Food and Fun

Bread and honey, toys and travel. This month **Dakota Life** enjoys food and fun made in South Dakota.

We visit Bizzy Lizzy Flourless Bakery near White, SD. Crafting cookies, muffins, brownies, bars and baking mixes primarily from oats, the bakery's products are gaining distribution throughout the Midwest, including HyVee stores and other markets from South Dakota to Michigan.

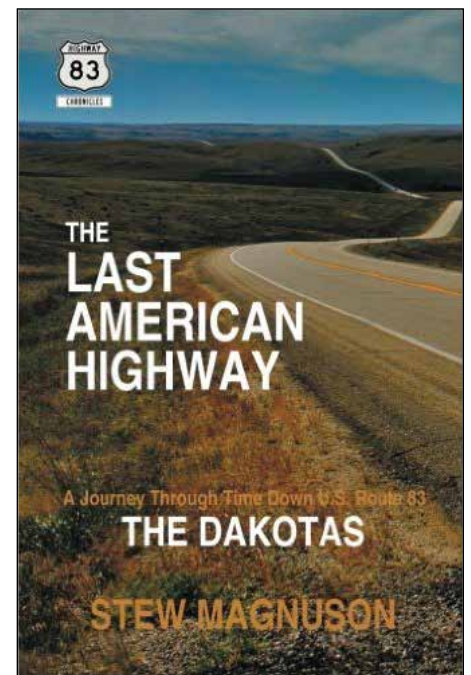
Rapid City recently passed an ordinance allowing residents to keep honey bees within city limits. **Dakota Life** introduces us to Rapid Citians who are creating urban habitats for some of South Dakota's pollinators.

Stephanie Rissler visits a Rapid City toy company experiencing new success with an old toy. In the age of apps and electronic devices, Magnum Enterprises, maker of Rubber Band Guns, has been designing and crafting pistols, rifles, and Gatlings – locked and loaded with rubber bands – since 1992.

As a boy visiting his grandparents in Nebraska, Washington, D.C.-based journalist and writer Stew Magnuson became fascinated with U.S. Highway 83. One of the longest north-south routes traversing the country, Highway 83 runs from Canada to Mexico and meets Interstate 90 at Murdo. Magnuson has recently penned *The Last American Highway: A Journey Through Time Down U.S. Route 83—The Dakotas*, which is part one of his U.S. Highway 83 Chronicles series. Magnuson

wrote *The Death of Raymond Yellow Thunder*, named 2009 Nebraska Book of the Year by the Nebraska Center for the Book, and maintains the U.S. Route 83 Travel Page website, as well as a "Fans of U.S. Route 83" Facebook group. **Dakota Life** visits with Magnuson about the lure and lore of Highway 83.

Tune in to **Dakota Life** on SDPB1, Thursday, April 7 at 8pm (7 MT).

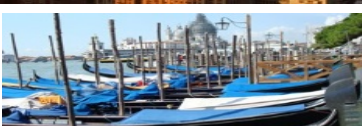


Stew Magnuson chronicles his journey through South Dakota in his book *The Last American Highway: A Journey Through Time Down U.S. Route 83 -The Dakotas*.



Exclusive 2016 Escorted Tours!

Bursch Travel has taken care of all the details on these exclusive trips.
All you have to do is sit back and enjoy!



ROYAL CARIBBEAN ALASKAN ADVENTURE

August 12-19, 2016
Escorted by Pat Converse
Bursch Travel Alexandria

IRISH ODYSSEY

Aug 25 – Sept 6, 2016
Escorted by Donna Strommen
Bursch Travel Alexandria

BEST OF ITALY

Oct 14-26, 2016
Escorted by Donna Strommen
Bursch Travel Alexandria

BEST OF THE BIG APPLE #1

Sept 29 – Oct 3, 2016
Please join us for a unique and completely customized tour of New York City.

BEST OF THE BIG APPLE #2

Oct 20-24, 2016 – MEA WEEKEND
See Best of the Big Apple #1 above.

SHIRINES OF ITALY

Oct 18-28, 2016
*Spiritual Leader – Ft. Aaron Nett
Highlights...Vatican City Papal Audience,
Christian Rome City Tour plus more!*

For complete details of each of these trips and others visit www.burschtravel.com

Bursch Travel Agency, 803 Saint Patrick Street, Rapid City SD 57701
605-342-2700 or 800-657-4888

TRAFALGAR



Live for the moments
and explore the world
Simply... discover

We are
with you
all the way

97% POSITIVE REVIEWS†

*Ask About
Current Specials*

803 St. Patrick St., Rapid City
605-342-2700 | 800-658-3348
burschtravel.com

†Guest rating from review site Feefo as shown on Trafalgar.com as of 2/8/16. CST#2077132-20

(continued from page 11)

THURSDAY—APRIL 21

SDPB1

- 6:00 (5:00 MT) **PBS NewsHour**
- 7:00 (6:00 MT) **On Call** *Thyroid, Diabetes, and Your Hormones*
- 8:00 (7:00 MT) **South Dakota Focus**
Political Junkies
- 9:00 (8:00 MT) **Doc Martin**
- 10:00 (9:00 MT) **Detectorists**
- 10:30 (9:30 MT) **BBC World News**
- 11:00 (10:00 MT) **Charlie Rose**
- Midnight (11:00 MT) **Tavis Smiley**

SDPB2

- 6:00 (5:00 MT) **NOVA Wild Ways**
- 7:00 (6:00 MT) **Mysteries of the Coral Canyon**
- 8:00 (7:00 MT) **Global Health Frontiers** *Stunted Future, Trouble w/ Ticks*
- 9:00 (8:00 MT) **PBS NewsHour**
- 10:00 (9:00 MT) **Nightly Business Report**
- 10:30 (9:30 MT) **Scully/The World Show**
- 11:00 (10:00 MT) **NOVA Wild Ways**
- Midnight (11:00 MT) **Mysteries of the Coral Canyon**

FRIDAY—APRIL 22

SDPB1

- 6:00 (5:00 MT) **PBS NewsHour**
- 7:00 (6:00 MT) **Washington Week**
- 7:30 (6:30 MT) **Charlie Rose – The Week**
- 8:00 (7:00 MT) **McLaughlin Group**
- 8:30 (7:30 MT) **Market to Market**
- 9:00 (8:00 MT) **Jazz Swing: The Velocity of Celebration**
- 10:30 (9:30 MT) **BBC World News**
- 11:00 (10:00 MT) **Charlie Rose**
- Midnight (11:00 MT) **Tavis Smiley**

SDPB2

- 6:00 (5:00 MT) **Chattahoochee Unplugged**
- 6:30 (5:30 MT) **Chesapeake Foot Soldiers**
- 7:00 (6:00 MT) **Beyond the Tap**



Photo: Craig Mellich

A grizzly bear fishes for salmon at Brooks Falls, Katmai National Park and Preserve, Alaska. **The National Parks: America's Best Idea** is a six-part, 12-hour film by Ken Burns on the history of America's national parks and the people who were willing to devote themselves to saving some precious portion of the land they loved. (See p. 5)
SDPB1: Monday, April 25 through Friday, April 29; 8pm (7 MT)

7:30 (6:30 MT) **Liquid Assets: The Story of Our Water Infrastructure**

- 9:00 (8:00 MT) **PBS NewsHour**
- 10:00 (9:00 MT) **Nightly Business Report**
- 10:30 (9:30 MT) **Asia Insight**
- 11:00 (10:00 MT) **Chattahoochee Unplugged**
- Midnight (11:00 MT) **Liquid Assets: The Story of Our Water Infrastructure**

SATURDAY – APRIL 23

SDPB1

- 6:00 (5:00 MT) **Lawrence Welk Show**
- 7:00 (6:00 MT) **Doc Martin**
- 8:00 (7:00 MT) **South Dakota High School All-State Band**
- 10:00 (9:00 MT) **No Cover, No Minimum**
Harper & Midwest Kind
- 11:00 (10:00 MT) **Austin City Limits** *Eric Church*
- Midnight (11:00 MT) **Live from the Artists Den**
Alabama Shakes

SDPB2

- 6:00 (5:00 MT) **Focus on Europe**
- 6:30 (5:30 MT) **Global 3000**
- 7:00 (6:00 MT) **Jackie Robinson Part 2 of 2**
- 9:00 (8:00 MT) **American ReFramed**
- 11:00 (10:00 MT) **Jackie Robinson Part 2 of 2**

SUNDAY – APRIL 24

SDPB1

- 1:00 (Noon MT) **South Dakota Focus**
Political Junkies
- 2:00 (1:00 MT) **South Dakota High School All-State Band**
- 4:00 (3:00 MT) **Rick Steves' Europe** *Palestine*
- 4:30 (3:30 MT) **Nature Adventures** *Wild Parrots of Texas*
- 5:00 (4:00 MT) **Antiques Roadshow** *Omaha*
- 6:00 (5:00 MT) **Midsomer Murders**
- 7:00 (6:00 MT) **Call the Midwife**
- 8:00 (7:00 MT) **Masterpiece** *Grantchester*
- 9:00 (8:00 MT) **Masterpiece** *Mr. Selfridge*
- 10:00 (9:00 MT) **Chris Tarrant: Extreme Railways**
- 11:00 (10:00 MT) **Globe Trekker** *Road Trip: Andes*
- Midnight (11:00 MT) **Washington Week**

SDPB2

- 1:00 (Noon MT) **Eyes on the Prize** *Power! (1966-1968)*
- 2:00 (1:00 MT) **Eyes on the Prize** *The Promised Land (1967-1968)*
- 3:00 (2:00 MT) **Eyes on the Prize** *Ain't Gonna Shuffle No More (1964-1967)*
- 4:00 (3:00 MT) **Eyes on the Prize** *A Nation of Law? (1968-1971)*
- 5:00 (4:00 MT) **PBS NewsHour Weekend**
- 6:00 (5:00 MT) **Dakota Life** *Water Ways*
- 7:00 (6:00 MT) **Nature** *Leave It to Beavers*
- 8:00 (7:00 MT) **W.S. Merwin: To Plant a Tree**
- 9:00 (8:00 MT) **Global Voices** *Recycle*
- 10:30 (9:30 MT) **Butterfly Town, USA**
- 11:00 (10:00 MT) **Nature** *Leave It to Beavers*
- Midnight (11:00 MT) **W.S. Merwin: To Plant a Tree**

MONDAY – APRIL 25

SDPB1

- 6:00 (5:00 MT) **PBS NewsHour**
- 7:00 (6:00 MT) **Antiques Roadshow** *Omaha*



Photo: Upright Films and ITVS International

Over the course of more than three years, director Camilla Nielsson gained exclusive access to the inner circles of politics in Robert Mugabe's Zimbabwe. **Independent Lens** *Democrats* follows two political opponents, the bullish Mangwana of the long-time ruling party ZANU-PF, and the Movement for Democratic Change's progressive Mwonozora, as they face the gargantuan task of writing a new constitution for the country.

SDPB1: Monday, April 18, 9pm (8 MT)

SDPB2: Wednesday, April 20, 6 & 11pm (5 & 10 MT)

(April 25, continued)

8:00 (7:00 MT) National Parks: America's Best Idea *The Scripture of Nature*
10:00 (9:00 MT) Red Green Show
10:30 (9:30 MT) BBC World News
11:00 (10:00 MT) Charlie Rose
Midnight (11:00 MT) Tavis Smiley

SDPB2

6:00 (5:00 MT) Standing on Sacred Ground
7:00 (6:00 MT) Pacific Heartbeat
8:00 (7:00 MT) Local USA *Hunger in America*
**8:30 (7:30 MT) On Story *Norman Lear- A Retrospective*
9:00 (8:00 MT) PBS NewsHour
10:00 (9:00 MT) Nightly Business Report
10:30 (9:30 MT) Religion & Ethics Newsweekly
11:00 (10:00 MT) Standing on Sacred Ground
Midnight (11:00 MT) Pacific Heartbeat**

TUESDAY – APRIL 26

SDPB1

6:00 (5:00 MT) PBS NewsHour
7:00 (6:00 MT) American Experience *Big Burn*
8:00 (7:00 MT) National Parks: America's Best Idea *The Last Refuge*
10:30 (9:30 MT) BBC World News
11:00 (10:00 MT) Charlie Rose
Midnight (11:00 MT) Point Taken



Photo: Danny Green/2020Vision

A short eared owl. For centuries, owls have been fascinating hallmarks of children's stories and folk tales the world over. What actually makes owls so special? Using the camera technology, computer graphics, x-rays and ultra-microscopes available in the modern world, take a new look at owls in more detail than ever before. On *Nature Owl Power*, learn the real stories behind how they hunt, how their vision and hearing work, and how they fly so silently are influencing 21st-century technology and design, from high-tech aircraft and submarines to innovative hearing aids.

SDPB1: Wednesday, April 27, 7pm (6 MT)

SDPB2

6:00 (5:00 MT) Racing to Zero: In Pursuit of Zero Waste
7:00 (6:00 MT) America ReFramed *In an Ideal World*
9:00 (8:00 MT) PBS NewsHour
10:00 (9:00 MT) Nightly Business Report
10:30 (9:30 MT) Global 3000
11:00 (10:00 MT) America ReFramed *In an Ideal World*

WEDNESDAY – APRIL 27

SDPB1

6:00 (5:00 MT) PBS NewsHour
7:00 (6:00 MT) Nature Owl Power
8:00 (7:00 MT) National Parks: America's Best Idea *The Empire of Grandeur*
10:00 (9:00 MT) Vicious
10:30 (9:30 MT) BBC World News
11:00 (10:00 MT) Charlie Rose
Midnight (11:00 MT) Tavis Smiley

SDPB2

6:00 (5:00 MT) Eating Alaska
7:00 (6:00 MT) Eating Alabama
8:00 (8:00 MT) Growing Cities
9:00 (8:00 MT) PBS NewsHour
10:00 (9:00 MT) Nightly Business Report
10:30 (9:30 MT) Focus on Europe
11:00 (10:00 MT) Eating Alaska
Midnight (11:00 MT) Eating Alabama

THURSDAY – APRIL 28

SDPB1

6:00 (5:00 MT) PBS NewsHour
7:00 (6:00 MT) On Call *Springtime Allergies*
8:00 (7:00 MT) National Parks: America's Best Idea *Going Home*
10:00 (9:00 MT) Detectorists
10:30 (9:30 MT) BBC World News
11:00 (10:00 MT) Charlie Rose
Midnight (11:00 MT) Tavis Smiley

SDPB2

6:00 (5:00 MT) Plight of the Grassland Birds
7:00 (6:00 MT) From Billions to None: The Passenger Pigeon's Flight to Extinction
8:00 (7:00 MT) Lost Bird Project
9:00 (8:00 MT) PBS NewsHour
10:00 (9:00 MT) Nightly Business Report
10:30 (9:30 MT) Scully/The World Show
11:00 (10:00 MT) Plight of the Grassland Birds
Midnight (11:00 MT) From Billions to None: The Passenger Pigeon's Flight to Extinction

FRIDAY – APRIL 29

SDPB1

6:00 (5:00 MT) PBS NewsHour
7:00 (6:00 MT) Washington Week
7:30 (6:30 MT) Charlie Rose – The Week
8:00 (7:00 MT) National Parks: America's Best Idea *Great Nature*
10:00 (9:00 MT) Dakota Starry Nights
10:30 (9:30 MT) BBC World News
11:00 (10:00 MT) Charlie Rose
Midnight (11:00 MT) Tavis Smiley

SDPB2

6:00 (5:00 MT) American Experience *Big Burn*
7:00 (6:00 MT) Rebels with a Cause
8:00 (7:00 MT) American Masters *A Fierce Green Fire*
9:00 (8:00 MT) PBS NewsHour



Photo: Scott Newton for KLRU

Austin City Limits showcases new acoustic music with Sarah Jarosz and The Milk Carton Kids. Multi-instrumentalist Jarosz highlights her album *Build Me Up From Bones*; the Milk Carton Kids play folk songs from their LP *The Ash & Clay*.
SDPB1: Saturday, April 30, 11pm (10 MT)

10:00 (9:00 MT) Nightly Business Report
10:30 (9:30 MT) Asia Insight
11:00 (10:00 MT) American Experience *Big Burn*
Midnight (11:00 MT) Rebels with a Cause

SATURDAY – APRIL 30

SDPB1

6:00 (5:00 MT) Lawrence Welk Show
7:00 (6:00 MT) Doc Martin
8:00 (7:00 MT) Keeping Up Appearances
10:00 (9:00 MT) No Cover, No Minimum *Nick Rallis Band*
11:00 (10:00 MT) Austin City Limits *Sarah Jarosz/The Milk Carton Kids*
Midnight (11:00 MT) Live from the Artists Den *Cage the Elephant*

SDPB2

6:00 (5:00 MT) Focus on Europe
6:30 (5:30 MT) Global 3000
7:00 (6:00 MT) Eisenhower's Secret War *From Warrior to President*
8:00 (7:00 MT) Eisenhower's Secret War *Building Weapons, Taking Peace*
9:00 (8:00 MT) American ReFramed *In an Ideal World*
10:30 (9:30 MT) Trees in Trouble
11:00 (10:00 MT) Eisenhower's Secret War *From Warrior to President*
Midnight (11:00 MT) Eisenhower's Secret War *Building Weapons, Taking Peace*

SDPB'S FAVORITE LOCAL TINY DESK CONTESTANTS



NPR recently sent out the call for musicians across the U.S. to record original music videos for the 2016 Tiny Desk Concert Contest. The contest is an offshoot of NPR's popular **Tiny Desk Concerts** – intimate video performances recorded live at the desk of *All Songs Considered*. Gaelynn Lea, a violinist from Duluth, MN, was the national winner, but SDPB chose a few of our own favorite local Tiny Desk Contestants: Sad Giants, Gordo Ji'Bang, Eliza Blue, and Shorthand Charlie.

Eliza Blue is a singer-songwriter who lives on a ranch in Bison, SD. She started performing original folk songs 10 years ago.

On her sound: "I love old country, and the folk singers from the 60s, but I also played classical violin growing up, so I think my sound is influenced by a lot of different genres. I most often get compared to Joni Mitchell and Alison Krauss, which is a huge compliment!"

On NPR's Tiny Desk Concert: "I am a huge fan of the Tiny Desk Concerts. It is a great format to enjoy live music – the next best thing to actually going to a concert."

On why she chose "Bury Me Deep" for the Tiny Desk Concert: "I knew I wanted to record the video

in our pasture, and I thought 'Bury Me Deep' would fit best with the setting this time of year. I really wanted to capture the bleak beauty of winter on the northern plains in both the soundscape and the visuals."

About South Dakota influencing her songs: "All of my newer songs are! I love living here. Much of my current song (and prose) writing is concerned with trying to catch and celebrate the little shifts in the seasons as they arrive, our



Eliza Blue.

Photo: Eliza Blue

chore rituals, and the other activities that make up daily life on a ranch."

On performing in South Dakota: "The distance between venues is by far the biggest challenge. The benefit of performing in South Dakota is the great audiences – especially in smaller towns. People are very appreciative of live music. I also love that when I play with a band, people dance! You don't get that in cities as much."

Seeing Eliza Blue live: "My son was just born last spring, so I haven't been playing out as much as I used to. Since he was born, I've played a few street fairs and festivals in the Hills, and small venues closer to home, as well as touring back to Minnesota." **See Eliza Blue's Tiny Desk Concert Contest entry:** sdpbne.ws/elizablue



Photo: Sad Giants
Bobby Benedict is Sad Giants.

Sad Giants is 23-year-old Brookings-based guitarist and singer Bobby Benedict, who also performs with The New FM.

Performing since: "2015, when the rest of my band couldn't make a show."

On NPR's Tiny Desk Concert: "The first video I ever saw was the T-Pain video where it was just him singing sans Autotune and a pianist. It was great."

On why he chose "Not Goodbye, See You Later" for the Tiny Desk Concert: "I think that it has a nice build to it, it's catchy but still meaningful, and it has a heartland

rock sort of feel. I was hoping the judges would hear my voice, not only literally but the songwriting perspective as well, and the heart that I put into both the writing and performance."

On performing in South Dakota: "People are, for the most part, extremely supportive. Most of the time, if people are performing in a bar or venue, then people pay attention or want to be a part of the fun. It's a great atmosphere to be in as a performer. That also begets the challenges. People want to be entertained and to hear live music but not always original music."

About South Dakota in his music: "Ha, well, there are a few unsavory songs of mine that are influenced by the topographical qualities of this state. Actually, "Not Goodbye, See You Later" was a bit influenced by some of the drives I've taken. After a long tour

it can be cathartic to see home again."

Why "Sad Giants": "I wanted to be Sad Giants because initially my songs were all fairly self-loathing or based around some of my depressive moods, and though it may not come off in my writing, I am actually quite large. I'm 6'6" and so Sad Giants was born."

Catch Sad Giants live at:

- Wooden Legs Brewing Company, Brookings – "I love that place for both the beer and the people."

- Latitude 44, Sioux Falls – "Great atmosphere and (owner) Cyndy has been supporting me and many others for years now."

- Total Drag, Sioux Falls – "Only all-ages venue in Sioux Falls and one of the best regional venues."

See Sad Giant's Tiny Desk Concert Contest entry: sdpbne.ws/sadgiants

Gordo Ji'Bang is Elsa Rae and David Houck. The musicians met at M.B. Haskett in Sioux Falls and have been performing since 2015.

On their sound: "When we made our Bandcamp page, we had to answer this question as well. We think we described ourselves as "electric hip hop gloom pop funk," which is mostly true. Elsa isn't as good as rapping as she thought she was, so we've pretty much abandoned the hip-hop vibe. Grungy gloom pop would be an accurate answer to your question."

On NPR's Tiny Desk Concert: "Elsa has known about NPR's Tiny Desk series for a while and suggested that we record a video and enter this year. It seemed like a great opportunity to gain some exposure whether we won the contest or not. Either way, we recorded a rad video and got to discover some rad musicians/bands in the process. It was rad!"

On why they chose "Quarter Life Crisis" for the Tiny Desk Concert: "It was a little difficult choosing which song to use honestly. We thought it was a pretty unique-sounding song but



Photo: Gordo Ji'bang

Gordo Ji'Bang.

choosing it for the video was really just a roll of the dice."

About South Dakota influencing their songs: "They all are in some way or another. We are about to release our full-length album which we wrote together throughout the winter here in Sioux Falls. We think it comes close to the same feeling you get from the frigid cold, the battering prairie winds and the relief and warmth of the long awaited spring which is usually taken for granted."

On performing in South Dakota: "The growth of the music scene in Sioux Falls specifically seems exponential right now. This has created

a really cool community of people whom are extremely willing to offer their support. Challenges, especially for young musicians, is that there is a lack of resources. We need more practice spaces, performance spaces, and media coverage."

"Gordo Ji'Bang" means: "Elsa worked at a Korean BBQ restaurant for a while. Her coworkers used to call her 'something something Ji'Bang.' She thought it was a nickname given out of endearment. Asking the owner what it meant one day, he said, 'Oh. That? That means 'Fat Snowball.' We looked up the word 'fat' in many languages and the Spanish word 'gordo' had a good ring to it. Gordo Ji'Bang. It literally means 'fat fat.'"

Catch Gordo Ji'Bang live at:

- Icon and Total Drag, Sioux Falls. "We even played a benefit show at M.B. Haskett once!"
- 605 Summer Classic, June 24th, Sioux Falls

See Gordo Ji'Bang's Tiny Desk Concert Contest entry:
sdpbne.ws/gordojibang

Shorthand Charlie, an anagram for singer-songwriter Nicholas Ehrhardt, lives on a 150 year-old farmstead near Hartford, SD.

On his sound: "My Facebook page says, 'Homegrown and Handcrafted Folk. Original music built from the ground up.' By homegrown, I mean that I play mostly original folk music, with stories and themes that usually come out of my own life. By handcrafted, I mean that I play most of my music on instruments that I built myself, from my acoustic and electric guitars to my washtub bass and foot-powered percussion setup."



Photo: Shorthand Charlie

Shorthand Charlie.

On NPR's Tiny Desk Concert: "I have been a longtime NPR junkie so I heard about the contest last year through NPR Music's streaming app. I entered a video last year, had so much fun being part of that community, so had an easy time deciding to enter again this year."

On why he chose "At the Top" for the Tiny Desk Concert: "I wrote "At the Top" a few summers ago while sitting with my guitar at the top of the silo on our farmstead. I hoped that my enthusiasm for the song would show through in my contest video. I also hoped that the judges would sense a little SD love in the video, to get a sense of the local hometown feel in the song."

About South Dakota in his songs: "My son is the 7th generation to live in our family farm house. I have songs about sunset walks through cornfields with my wife, old barns and rusty tractors, fall harvest songs, big winter

SD blizzards, spring coming after those long winters, and big summer thunderstorms. My friends have told me to be careful before all of my music ends up being about life on the farm."

On performing in South Dakota: "I have found the music scene in Sioux Falls to be very open and supportive, with a ton of great eclectic local musicians to listen to and play along with."

Catch Shorthand Charlie live at:

- Latitude 44, Sioux Falls
- Sioux River Folk Fest – "I entered the contest last summer and won! That was a blast!"
- Adolph's Place, rural Hartford – "My wife and I host occasional house concerts on our farm where we converted an old machine shed and 1950's Chevy pickup into a stage."

See Shorthand Charlie's Tiny Desk Concert Contest entry:
sdpbne.ws/ShorthandCharlie



Check out Buddy's brand new website SDPB.org/buddy for fun, games, and more!

Buddy's Back for Spring!

Buddy the SDPB Bird used the long winter months to do some remodeling around the nest. This April, Buddy's Birdhouse at SDPB.org/buddy (ages 3-12) features new graphics, games, and a gallery of South Dakota Kids Art. Parents and educators can also find quick links to PBS Kids and PBS Parents, which are chock-full of fun, trustworthy activities and learning resources.

While you're visiting Buddy's Birdhouse, be sure to click on Buddy's Birthday Club, where you'll not only find printable Buddy Birthday Certificates featuring favorite PBS characters like **Wild Kratts**, Buddy from **Dinosaur Train**, and **Daniel Tiger**, but also links to PBS-themed party ideas. Learn how to bake a **Thomas the Train** cake, throw a science soirée, or craft creature-feature party favors for a Wild Kratts party!

A favorite of kids wherever he goes, Buddy the SDPB Bird came home to roost in SDPB in 2003. SDPB's first on-air kids character, Clifford (described as a very distant cousin of Cookie Monster) helped present educational programming in the 1970s. Buddy's predecessor SeeMore, a colorful TV mascot, marched in parades and threw out the first pitch at a Sioux Falls Canaries game before his retirement from show business.

Buddy will make lots of appearances throughout the state this spring and summer. See him soon at the Youth & Family Services Fair in Rapid City, April 22-24 and June 11 in Pierre for the SD Game, Fish & Parks Outdoor Campus.

Join Buddy's Birdhouse at SDPB.org/buddy.



SeeMore was Buddy's predecessor in the 1990's.



Clifford helped promote SDPB programming in the 1970's.

SDPB at the YFS Kids Fair

Kids and their families are encouraged to join SDPB for fun and educational activities at the 21st Annual Youth & Family Services Kids Fair, April 22-24, at the Rushmore Plaza Civic Center, in Rapid City. Enjoy goodies from your favorite PBS shows and see "Science Steve" and his amazing science demonstrations.



Snap a pic with Buddy!



See amazing Science Steve!



Get cool free stuff from SDPB & PBS!



Show your love for SDPB with a selfie sign!

We will see you there!

RADIO	WEEKDAYS	SATURDAYS	SUNDAYS	
5am / 4 MT	Morning Edition NPR news. Star Date 9am (8 MT)	BBC World Service Overnight.	BBC World Service Overnight.	
5:30/4:30 MT		The People's Pharmacy Health news & alternatives.	TED Radio Hour Ideas, inventions and original thinking.	
6am / 5 MT		Weekend Edition News and features from NPR.	Weekend Edition News and features from NPR.	
6:30/5:30 MT				
7am / 6 MT		Morning Classics with Owen DeJong ▼ "South Dakota Season Ticket" w/ local performance on Wed. "Request Day" on Fridays.	The Best of Car Talk Real advice, zany hosts.	Krista Tippett on Being Philosophical discussions.
7:30/6:30 MT			Wait, Wait ... Don't Tell Me! Trivia, humor from week's news.	Travel with Rick Steves America's top travel expert.
8am / 7 MT			This American Life Portraits of all kinds of Americans.	America's Test Kitchen Recipes, tips, and information.
8:30/7:30 MT			Radiolab Science and life.	A Prairie Home Companion Garrison Keillor with music, humor, skits and more.
9am / 8 MT				
9:30/8:30 MT	Here & Now Mondays-Thursdays News, features, conversations and more from NPR.	TED Radio Hour Ideas, inventions and original thinking.	Wait, Wait ... Don't Tell Me! Trivia, humor from week's news.	
10am / 9 MT		Ask Me Another Test your wits in this lively quiz show.	On the Media News analysis and journalistic journeys.	
10:30/9:30 MT	Science Friday on Fridays.	The Dinner Party Download Pop culture, food & conversation.	All Things Considered NPR	
11am / 10 MT	PRI's The World Global news.	All Things Considered NPR		
11:30/10:30MT	All Things Considered NPR National Native News 4:30 (3:30 MT)	A Prairie Home Companion Garrison Keillor with music, humor, skits and more.	Fresh Air Weekend Best features from the week.	
Noon / 11 MT		Marketplace	Radiolab Science and life.	
12:30/11:30MT				
1pm / Noon MT	Fresh Air with Terry Gross Celeb, newsmaker interviews.	American Routes Roots music, stories behind sounds/ artists.	This American Life Portraits of all kinds of Americans.	
1:30/12:30 MT		Rock Garden Tour ▼ Last Sat. of month, 8pm (7 MT)	The Moth Radio Hour Compelling real-life stories.	
2pm / 1 MT	Jazz Nightly with Karl Gehrke ▼ Karl features jazz artists & styles, as well as South Dakota Jazz Stars.	No Cover, No Minimum Radio ▼ South Dakota performance.	Big Band Spotlight with Karl Gehrke ▼ Music of '30s & '40s.	
2:30/1:30 MT		On Record with Matt Weesner ▼ Adult alternative music.	Jazz Nightly Extra ▼ More jazz from SDPB's vast library.	
3pm / 2 MT		World Café Music from around the globe.	No Cover, No Minimum Radio ▼ South Dakota performance.	
3:30/2:30 MT				
4pm / 3 MT		BBC World Service Overnight.	BBC World Service Overnight.	
4:30/3:30 MT				
5pm / 4 MT	BBC World Service Overnight.	BBC World Service Overnight.		

SDPB News is You

Throughout each weekday, SDPB Radio News keeps South Dakotans informed about your state and your world.

Morning Edition host Gary Ellenbolt is your rise-and-know source. Up at 3am and on by 6am, Gary preps and delivers daybreak's headlines – breaking events, weather advisories, primary results, or basketball scores – so you can make the most of your day.

Next at noon, Lori Walsh digs deeper on **Dakota MIDDAY**. In-depth conversations with local and global lawmakers, artists, business folks, scientists, academics – few topics go uncovered so you can be aware

of issues and events impacting your hometown and the world.

For your drive-time and dinnertime, Chris Laughery caps off your workday with **All Things Considered**, including a breakdown of the day's events and items to watch.

Meanwhile, the SDPB News team stays on top of the legislative session to give you legislative action as it happened. This year, reports from Pierre by Cara Hetland, Jenifer Jones, and Kealy Bultena and SDPB reporters clarified complicated political issues and government procedures on education funding, Medicaid expansion, transgender issues, prenatal care, farm bills and more.



Lori Walsh keeps you up to date on South Dakota news on **Dakota MIDDAY**.

The broad coverage and in-depth stories you depend on are made possible by SDPB supporters like you. Thanks for your part in keeping South Dakotans informed about your state and your world.

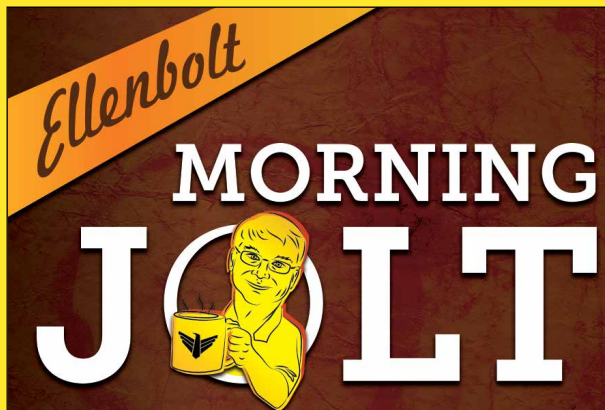
It's Ellenbolt Morning Jolt

Tune in to Morning Edition with host Gary Ellenbolt weekdays from 6-9am and learn how you can start your mornings with an extra jolt of Ellenbolt.

SDPB has partnered with Brookings coffee roaster Kool Beans Coffee to create the Ellenbolt Morning Jolt – a robust blend customized for maximum satisfaction with your headlines and morning cup of joe.

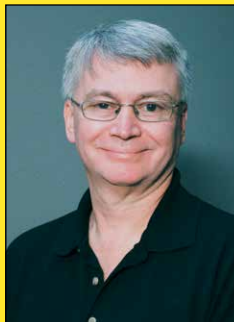
Tasters of the special blend have said the Ellenbolt Morning Jolt has “a smooth delivery with a punny finish.”

Experience it for yourself! A pound of premium Ellenbolt Morning Jolt will be available as a thank you gift during SDPB's Radio Membership Drive, Monday, April 11 through Friday, April 15.



Ellenbolt Morning Jolt Coffee is among the amazing premiums you can receive when you support SDPB Radio.

Morning Edition host Gary Ellenbolt starts the day on SDPB Radio.



Join the National Debate: New Series Point Taken



Photo: WGBH
Carlos Watson.

South Dakotans can be part of the national debate scene with the launch of **Point Taken**, the new, late-night weekly multi-platform series.

The program will champion spirited, civil conversation with Emmy Award-winning journalist host Carlos Watson. Each half-hour show will focus on a single topic and feature journalists, artists, academics, and experts to passionately and persuasively explore all sides of a key issue. The first episode premieres Tuesday, April 5, at Midnight (11pm MT) on SDPB1.

Grounded, persuasive and passionate – **Point Taken** promises to be a winning candidate in the field of late-night TV for the digital age.

Hash out your issues at:
PBS.org/PointTaken
#PointTaken

SDPB at Lakota Nation Invitational

SDPB Educational Specialist Steven Rokusek offered sessions at the Lakota Nation Invitational in Rapid City, Dec. 17-19, 2015. Rokusek presented two sessions including: “Education Resources for the Oceti Sakowin – Essential Understandings and Standards (American Indian Culture/History),” in which session participants learned about SDPB's Digital Learning Library and Native American studies websites. Rokusek also offered “Interactive Science Activities for Children,” demonstrating life and physical science activities that encourage educators and caregivers to teach about live science in the classroom and at home. SDPB's participation in LNI is made possible, in part, by a grant from the John T. Vucurevich Foundation and by Friends of SDPB.



An educator learns about “Winter Counts” – pictorial calendars or histories used by Plains Indians to record tribal events.



Education Specialist Steven Rokusek spoke about interactive science projects for children.



Students at the Lakota Nation Invitational enjoy science and basketball at SDPB's booth.

Thank You for Your Gifts to Friends of SDPB

Friends of SDPB has received the following gifts.

Anne Gandrud of Minneapolis, MN, provided a gift in memory of Earl Nordby, Huron.

The Visionary Society

Executive Producers Club (Contributors of \$1,000 or more)

Pat & Gary Hamilton, Rapid City

Anita McCord & Tom Keiner, Spearfish

Heritage Circle (Heritage Circle members have generously included SDPB in their estate giving.)

Phyllis E. Blumer Estate, Beresford

Thank you. We are grateful for your generous support.

To learn how you can support SDPB with your gifts, please call Friends of SDPB at 800-333-0789.

Cheerio, Downton Abbey!

Friends of SDPB held eleven Downton Abbey teas in eleven towns across South Dakota March 5 to celebrate the season finale of the beloved PBS series. Costumed revelers enjoyed finger foods, door prizes, *Downton Abbey* trivia, and dishing with fellow fans.



Milbank ladies were dressed to the nines for tea.



Enjoying the beautiful weather outside The Hitching Horse Inn in Pierre.



Downton fans in Sioux Falls participated in a costume contest.



Dapper gents in Watertown (left) and Milbank (right) provided first class service.



These fans from Mitchell know how to dress to impress.



Downton fans in Rapid City demonstrate proper tea pouring technique.



Huron fans hosted an elegant spread at Top Floor.

Corporate Support *Our corporate partners continue to support the excellent Television and Radio programming you have come to expect and love from SDPB.*

Aberdeen Parks, Recreation & Forestry Department	Credit Union Association of the Dakotas	Paul Horsted, Dakota Photographic, LLC	Prairie Repertory Theatre	South Dakota State Fair
Abourezk Law Firm	Dacotah Bank	Horton Incorporated	Presentation Sisters of Aberdeen	South Dakota State Historical Society
Acupuncture 4 Health	Dacotah Prairie Museum—Granary Rural Cultural Center	Howes Oil	Puetz Corporation	South Dakota State Quilt Guild
All Souls Church	Dakota Plains New Holland	Hy-Vee Food Stores	Quilters Headquarters	South Dakota State University
ArtForms Gallery	Dakota State University	IFAM Capital	Rapid City Arts Council	South Dakota State University – Woodbine Productions
Arts Rapid City	Daktronics	IMED Mobility	Rapid City Sculpture Project	South Dakota Symphony
Associated General Contractors of South Dakota	Davenport Evans Lawyers	Independent Insurance Agents of SD	Regional Health	South Dakotans for the Arts
Avera Health	Deadwood History (Adams Museum & House/Days of '76/Adams Research & Cultural Center)	Ingalls Homestead	Reptile Gardens	Southeastern Dental Center – Dr. Daniel Goede
BankWest	Delta Dental of South Dakota	Institute of Lutheran Theology	Rocklands Entertainment	Spearfish GMC Cadillac
Bay Leaf Café, Inc.	DeMersseman Jensen Tellinghuisen & Huffman, LLP	Interim HealthCare	Dr. Aaron Rumpca, Murdo Dental	Sunset Pawn, Inc.
Bethesda	East River Electric Power Cooperative	James Szana Trio	Sanford Health	Tabor Czech Days
Black Hills Area Community Foundation	Emmanuel Episcopal Church	Jerry Sanftner Insurance	SDN Communications	Touchstone Energy
Black Hills Blues Society	Exceptional Artists	Jolly Lane Greenhouse	Sioux Falls Area Community Foundation	Turbak Law Office, PC
Black Hills Federal Credit Union	Family Dentistry of Sioux Falls	Jorgensen Log Homes, Inc. (The) Journey Museum	Sioux Falls Seminary	University of Sioux Falls
Black Hills Film Festival	Farmers Union Insurance Companies	Keller Williams Realty – Jeff Nelson	Siouxland Museums	University of South Dakota
Black Hills Knowledge Network	First Bank and Trust	Koch Hazard Architects	South Dakota Affiliate of the American College of Nurse Midwives	Vance Thompson Vision
Black Hills Playhouse	First Dakota National Bank	Landscape Garden Centers	South Dakota Agricultural Heritage Museum	Viken & Riggs Law Firm
Black Hills Regional Eye Institute	Fischer, Rounds & Associates	Mr. James Leach, Attorney at Law	South Dakota Art Museum	Warne Chemical & Equipment Company
Black Hills State University	Flooring America	LIW Pageant Society	South Dakota Arts Council	Washington Pavilion
Black Hills Symphony	Founding Fathers	Madison Farmers Elevator	South Dakota Bar Foundation	Weigum's Great Plains Landscape Arboretum
Black Hills Unitarian Universalist Fellowship	Four Seasons Fabric	Mahlander's	South Dakota Community Foundation	West River Dermatology Clinic – Dr. Roger Knutsen & Dr. Siri Knutsen Larson
Bursch Travel	Gene Hufford Agency	Main Street Market	South Dakota Corn	Westhills Village Retirement Community
Bush Foundation	Great Plains Zoo & Delbridge Museum	McCroly Gardens	South Dakota Crop Improvement Association	Wilson, Olson & Nash, PC - Attorneys at Law
Capital Services	Chet Groseclose, Prof. LLC	Media One Advertising	South Dakota Film Festival	World Bicycle Relief
Carter County Museum	Hill City Arts Council	Missouri River Energy Services	South Dakota Humanities Council	Xanterra
Catholic United Financial	Hill City Mercantile	National Music Museum	South Dakota Space Grant Consortium	Xcel Energy
(The) Center for Western Studies	Home Federal Bank	North County Fiber Fair	South Dakota Speech-Language-Hearing Association	
Children's Museum of South Dakota		Northern State University		
CO-OP Architecture		NorthWestern Energy		
		Ophthalmology Associates		
		Ophthalmology LTD		
		Pathway Investment		

Join us in telling South Dakota's stories. Be an underwriter.

Contact the Corporate Development Manager.

Terrie Koehne
800-456-1266

Volume 47 No. 4

Friends of SDPB Office

PO Box 5000
Brookings, SD 57006
(605) 688-4191 or (800) 333-0789

Ryan Howlett, Friends CEO
(800) 456-0556

SDPB Administrative Office

PO Box 5000
Vermillion, SD 57069
(605) 677-5861 or (800) 456-0766

SDPB Home Page

<http://www.SDPB.org>
press@SDPB.org

SDPB Magazine & Promotion Staff

Katy Beem, Editor
Matti Smith, Marketing Manager
Amber Anders, Continuity Director
Dave Foote, Promotion Producer
Michael Zimny, Social Media
Arianne Wunder, Marketing Intern

Friends of SDPB Board

President Daniel Leikvold, Lead
Vice President Janelle Krause Toman, Pierre
Tom Manzer, Treasurer, Brookings
Greg Blomberg, Secretary, Sioux Falls
Wayne Carney, Fort Pierre
Malcom "Chap" Chapman, Rapid City
Scott German, Peever
Thomas E. Graslie, Rapid City
Marcia Hendrickson, Chancellor
Rebecca Jirava, Brookings
Lizabeth Manning, Spearfish
Katrina Lehr-McKinney, Sioux Falls
Waneen Polly, Watertown
Prof. Tim Schorn, Vermillion
John Charles Sternquist, Yankton
Cheryl Eagan Taylor, Sioux Falls
South Dakota Educational Telecommunications Board
Mark Shlanta, Chair, Sioux Falls
Doyle Estes, Hill City
Kay Jorgensen, Spearfish
Rick Knobe, Sioux Falls
Julie Mathiesen, Sturgis
Gerry Schlenker, Canistota
Michael G. Rush, Regents, Pierre
Julie Overgaard, SDPB, Vermillion
David Zolnowsky, BIT, Pierre

SDPB Management Team

Julie Overgaard, Executive Director
Larry Rohrer, Director of Content
SeVern Ashes, Engineering Director
Bob Bosse, Television Director
Cara Hetland, Radio Director
Fritz Miller, Marketing Director
Kent Osborne, Online Director

– South Dakota Public Broadcasting is a division of the South Dakota Bureau of Information and Telecommunications.

– Friends of SDPB is a 501(c)3 organization.
– SDPB Magazine is printed by Midstates Printing, Aberdeen, SD. Approximately 14,500 copies of the document were printed at an approximate cost of \$.36 per copy. SDPB Magazine (ISSN 1529-1596) is published and mailed monthly for \$10 per year for Friends of SDPB, 815 Medary, Brookings, SD 57006. Periodical postage paid at Brookings, SD, and additional mailing offices.

Postmaster: Send address changes to Friends of SDPB, Box 5000, Brookings, SD 57006. USPS 0764-400





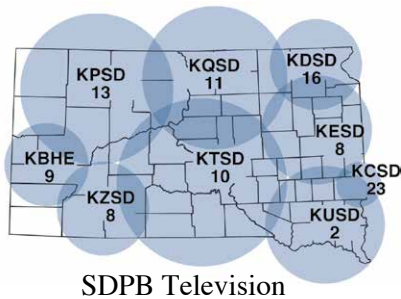
To see the world for the first time.
Again.

The world's most advanced cataract surgery.

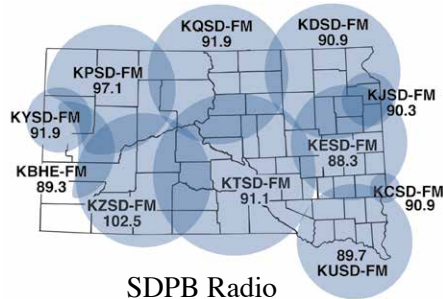
Memories old and new begin with beautiful vision. **ReLACS**, and don't miss them. **Refractive Laser-Assisted Cataract Surgery** combines the world's most advanced diagnostic, laser, and lens technology in a procedure that affects your vision for the rest of your life. Understanding your options to treat cataracts means confidence and clarity about your decision. So, if you suffer from compromised vision due to cataracts, **ReLACS**. Call to schedule an informative cataract consultation at Vance Thompson Vision.

(877) 522-3937
vancethompsonvision.com

VANCE THOMPSON
VISION



SDPB Television



SDPB Radio

Live and on-demand audio and video at SDPB.org



The number on the top of your address is your membership expiration date. The number on the left is your identification. Please use for membership renewals. This will reduce our processing time and speed up your service.



Printed on Recycled Paper



Here for you.SM



Strike up the band!

2016 South Dakota All-State Band concert on SDPB1.

Saturday, April 23 – 8pm (7 MT)

Sunday, April 24 – 2pm (1 MT)



SDPB
South Dakota
Public Broadcasting