



SDPB Magazine

May 2016



CALL THE MIDWIFE

SUNDAYS
7 CT/6 MT



PBS.



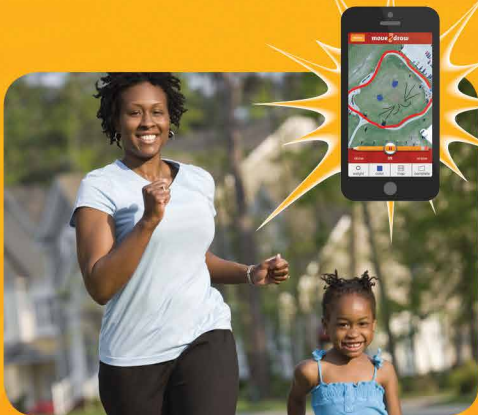
Get ready to get *fit*!

Through *fit*, you can access and experience a suite of resources for parents and kids, all designed to help families make *fit* choices and stay healthy.



For parents

The Sanford *fit*/WebMD website gives parents the tools and resources they need to become healthy role models. Log on to explore healthy recipes, *fit* family challenges and connect with a community of parents and experts for support. Go to webmd.com/parenting/raising-fit-kids.



For kids

The website also offers an experience just for kids. Let them log on and discover entertaining and educational games, videos and challenges. No matter their age, the site has something for all kids to help them make *fit* choices every day and stay *fit* for life. Go to fit.sanfordhealth.org.



On the go

Take *fit* with you wherever you go! Though a series of free and engaging apps, you are never far away from *fit* activities. MOVE2Draw connects fun, friends and *fit* and is a simple and interactive way for kids to move and create their own unique drawings. eMOODicam helps not only capture the moment but also the emotion by allowing kids to bring their feelings to life and share with their friends in an easy-to-use app. Download in your app store today!

Visit us at sanfordhealth.org,
Keyword: *fit*



The Final Lap, The Final Note: High School Sports and Music

SDPB TV and SDPB Online capture the sights and sounds of the spring South Dakota High School Activities championship season with sports and music events in May.

Boys Tennis

Boys Tennis serves up excitement from the Parkview Tennis Complex at Sioux Park in Rapid City May 19-21. Catch the action on SDPB.org and on SDPB's Facebook and Twitter pages at #sdtennis16

Boys and Girls Track & Field

Top high school runners, hurdlers, jumpers and throwers compete at the Boys and Girls Track & Field Meet May 27 & 28.

Friday, May 27 – Boys & Girls Preliminary Events

Class AA - McEaney Field, O'Gorman High School, Sioux Falls

Class A – Trojan Field, Dakota State University, Madison

Class B – Howard Wood Field, Sioux Falls

SDPB Online for photos and updates uploaded to Facebook and Twitter at #sdtrack16

Saturday, May 28 – Boys & Girls Final Events

Class AA, A, & B: Howard Wood Field, Sioux Falls

SDPB2 and SDPB.org broadcasts final events from 9am-4pm (8am-3pm MT).

SDPB.org/Track for live stream, photos, and more.

All-State Jazz Band Concert jams May 7 at Central High School in Aberdeen. Watch the live stream at SDPB.org/Live or tune in to SDPB1-TV, Saturday, May 28, 8pm (7 MT).

The All-State Jazz Band includes three guest conductors:

L.A. saxophonist Bob Reynolds, best known as a featured soloist with John Mayer and Snarky Puppy, and who has also worked with Michael Bublé, Josh Groban, and Usher; Minneapolis trumpet player/composer/educator Adam Meckler, who has toured with Youngblood Brass Band, Nooky Jones, The Jana Nyberg Group, and Lulu's Playground, and, guitarist/composer William Flynn of Wichita, KS, who holds a Bachelor of Music degree in Jazz Studies from Capital University and a Master of Music degree from the University of North Texas. William's most recent release as a leader, *The Songbook Project*, is available on the Armored Records label.

Major sponsors of high school activities coverage include Dakotah Bank and SD Corn. Additional sponsors include Farmers Union Insurance Agency; SDN Communications; Independent Insurance Agents of South Dakota, and Avera. Also, Touchstone Energy Cooperatives; Sanford Health; Spearfish GMC Cadillac; Delta Dental of South Dakota; New Holland; South Dakota State University; Fischer, Rounds and Associates; Vance Thompson Vision, and Catholic United Financial.



Call the

Midwestern Midwife



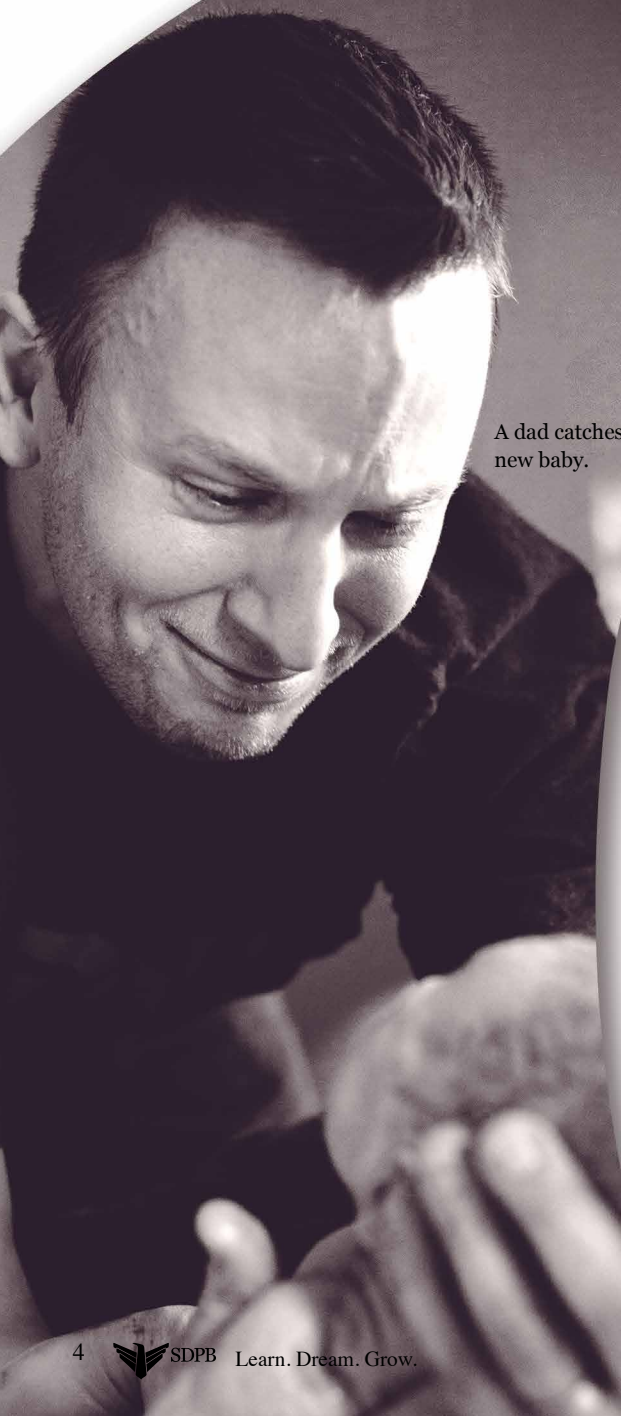
Photo: Avera

Lisa VanGerpen.



Hannah Parker.

"Midwifery is the very stuff of drama. Every child is conceived either in love or lust, is born in pain, followed by joy or sometimes remorse. A midwife is in the thick of it, she sees it all."
- Jennifer Worth, **Call the Midwife**



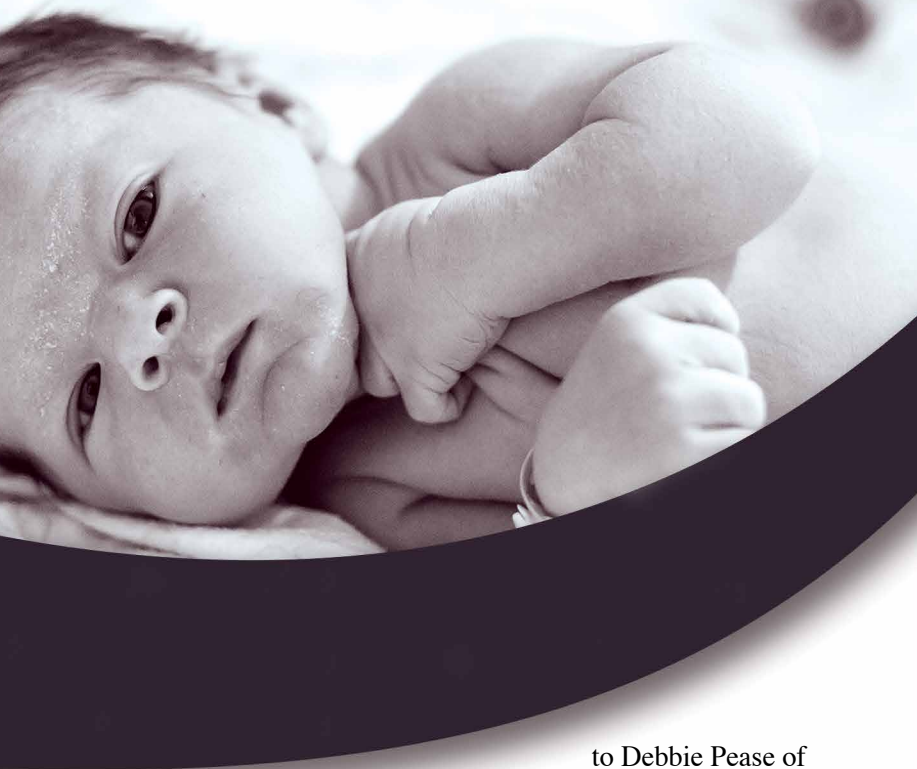
A dad catches his new baby.

The PBS drama **Call the Midwife**, airing Sundays at 7pm (8 MT) on SDPB1, is based on British nurse Jennifer Worth's memoirs practicing midwifery (pronounced *mid whiffery* and derived from the Middle English "mid women" for "with women") in London's working class East End during the 1950s and 1960s. The series, both sensitive and forthright in its portrayals of pregnancy, labor, and delivery, depicts the lives of the midwives, nuns and expectant mothers charged with birthing babies during an era of relatively limited options for medical interventions. In today's routine world of 4D ultrasounds and caesarean births, it's compelling to observe the women's responses to the debut of pain medication, the Pill, and a movement toward hospital births.

While the number of options and medical advancements available to mothers laboring in the 1950s and 1960s may contrast with a profusion of choices today, **Call the Midwife** delves into themes immemorial to obstetrics: maternal health, birth defects, infant loss, and above all, women supporting women in the blood, sweat, and tears of childbirth. It is this supportive relationship, with added emphasis on personal choice and education, that continues to define midwifery today. Lisa VanGerpen has been a Certified Nurse Midwife (CNM) for 17 years with Avera Women's in Sioux Falls. She says while the technology available in the delivery room 50 years ago is noticeably different from today, the extra attention the show's midwives bestow upon mothers-to-be is comparable to modern midwifery and is why VanGerpen went on to earn her master's degree in midwifery after working as a labor and delivery nurse for many years. "I want to be able to support women," says VanGerpen, "I think it's important for women to be able to have a lot of education during their pregnancy and when they give birth, to have options and do whatever is important to them during their labor and birth."

According to VanGerpen, extended appointments are the main reason expectant parents seek out midwives. "Parents tell us they choose us because we have longer office visits," says VanGerpen. "CNMs do the same prenatal schedule as physicians. We do ultrasounds and lab work. But we tend to spend a lot of time developing relationships."

VanGerpen says CNMs also see women with diabetes and those who've



Mother and child become acquainted.

had C-sections and want to avoid the surgical procedure in subsequent births.

VanGerpen says in her years at Avera Women's, the understanding of what nurse midwives do has improved among the general public as well as among physicians, thanks in large part to increased communication between doctors and nurse midwives and the support of hospital administration. Nonetheless, she says, misconceptions about the profession linger due to the history and politicization surrounding the term "midwife." "I think a lot of people still think midwives do only homebirths," says VanGerpen. "But across the country 96 – 98% of nurse midwives deliver in hospitals." VanGerpen says homebirth is legal in South Dakota with a CNM and has been for several years. CNMs can also prescribe pain and IV medications, epidurals, and antibiotics if desired. VanGerpen says one of the main challenges of practicing midwifery in South Dakota is the confusion between Certified Nurse Midwives (CNMs) and lay midwives or Certified Professional Midwives (CPMs). CNMs like VanGerpen are advanced practice nurses with four-year nursing degrees and masters' or doctorate degrees in midwifery. CNMs are jointly licensed by the state boards of medicine and nursing. CPMs, meanwhile, are credentialed by the North American Registry of Midwives, according

to Debbie Pease of Centerville. Pease is lobbyist for SD Birth Matters, a homebirth advocacy group that has unsuccessfully brought legislation in various forms to the state legislature seeking to license CPMs. In South Dakota, CPMs are not currently licensed or legally recognized by state law and therefore are not legally authorized to attend births. Pease says her group hopes to work closely with the state Department of Health and the Board of Nursing to develop a successful bill for the next legislative session. They cite Wyoming's independent CPM-licensing board as a model for expanding legal homebirth options in South Dakota.

Another option for expectant parents in eastern South Dakota is an accredited, free-standing birth center. Lisa Groon of Harrisburg and Hannah Parker of Sioux Falls are owners and founders of Nourish Birth Collective and the planned Nourish Birth Center in Sioux Falls. Trained as doulas, Groon and Parker say the idea for the collective and center came from their own difficulty finding trusted resources in a sea of often conflicting information about pregnancy and childbirth. "In our own pregnancies we did numerous internet searches about controversial topics, but never really

knew which resources were trusted since there can be so much information on both sides," says Parker. The birth collective offers an array of services, including yoga, chiropractic, mental health, lactation and birth photography. The birth center will work closely with area hospitals and will staff CNMs in a "maximized home" location to provide well-woman care and labor and delivery support. Plans are to open in spring 2017.

While the traditions of natural birth and support remain central to the profession, today's nurse midwives emphasize positive outcomes. "I think that's probably the benefit of modern midwifery," says VanGerpen. "For the most part we can just let people naturally have a baby as they're meant to be. But if there are complications we can try to preserve the normal part of the whole birth and labor experience and still take care of any high-risk needs they have."

Photos courtesy of Hannah Parker & Lisa Groon of Nourish Birth Collective in Sioux Falls.

SDPB-TV Daytime Programming

Primetime listings on pages 8-15

SDPB1	WEEKDAYS	SATURDAYS	SUNDAYS
5am / 4 MT	Newsline	Beads, Baubles & Jewels	Dakota Life ▼
5:30/4:30 MT	Classical Stretch	Dakota Life ▼	Dinosaur Train
6am / 5 MT	BBC World News	Barney & Friends	Sesame Street
6:30/5:30 MT	Ready Jet Go!	Caillou	Daniel Tiger's Neighborhood
7am / 6 MT	Nature Cat	Curious George	Curious George
7:30/6:30 MT	Curious George	Nature Cat	Nature Cat
8am / 7 MT	Daniel Tiger's Neighborhood	Ready Jet Go!	Ready Jet Go!
8:30/7:30 MT	Daniel Tiger's Neighborhood	Wild Kratts	Wild Kratts
9am / 8 MT	Arthur	Clifford the Big Red Dog	Sid the Science Kid
9:30/8:30 MT	Peg + Cat	Bob the Builder	Word Girl
10am / 9 MT	Dinosaur Train	It's Sew Easy	Arthur
10:30/9:30 MT	Dinosaur Train	Fons & Porter's Love of Quilting	Religion & Ethics Newsweekly
11am / 10 MT	Super Why!	Quilt in a Day	McLaughlin Group
11:30/10:30MT	Thomas & Friends	Sewing with Nancy	Market to Market
Noon / 11 MT	Sesame Street	Quilting Arts	Various
12:30/11:30MT	Cat in the Hat Knows a Lot about That	Rough Cut – Woodworking	Motorweek
1pm / Noon MT	Curious George	Woodsmith Shop	Repeat of previous Thursday 8pm (7 MT)
1:30/12:30 MT	Curious George	This Old House Hour	
2pm / 1 MT	Educational Program		Documentary, news, science, nature
2:30/1:30 MT	Nature Cat	Martha Bakes	
3pm / 2 MT	Ready Jet Go!	America's Test Kitchen	
3:30/2:30MT	Odd Squad	The Victory Garden's Edible Feast	
4pm / 3 MT	Wild Kratts	Garden Smart	Rick Steves' Europe
4:30 / 3:30 MT	Cyberchase	America's Heartland	Nature Adventures ▼
5pm / 4 MT	Martha Speaks		Antiques Roadshow
5:30 / 4:30 MT	Nightly Business Report	Classic Gospel	

SDPB2	MONDAYS	TUESDAYS	WEDNESDAYS	THURSDAYS	FRIDAYS	SATURDAYS	SUNDAYS					
5am / 4 MT	Overhead w/ Smith	Global 3000	To the Contrary	Scully/World Show	Well Read	Religion & Ethics	To the Contrary					
5:30/4:30 MT	Religion & Ethics	Focus on Europe	American Forum	Second Opinion	Closer to Truth	Wealthtrack	Washington Week					
6am / 5 MT	Newsroom Tokyo	Newsroom Tokyo	Newsroom Tokyo	Newsroom Tokyo	Newsroom Tokyo	To the Contrary	McLaughlin Group					
6:30/5:30 MT						McLaughlin Group	Open Mind					
7am / 6 MT	Documentary, news, science, nature & repeats of previous day's SDPB2 primetime programming	Documentary, news, science, nature & repeats of previous day's SDPB2 primetime programming	America ReFramed followed by documentary, news, science, nature & repeats of previous day's SDPB2 primetime programming	Documentary, news, science, nature & repeats of previous day's SDPB2 primetime.	Documentary, news, science, nature & repeats of previous day's SDPB2 primetime.	Documentary, news, science, nature & repeats of previous day's SDPB2 primetime programming	Focus on Europe					
7:30/6:30 MT							Global 3000					
8am / 7 MT							Documentary, news, science, nature & repeats of previous week					
8:30/7:30 MT								America ReFramed				
9am / 8 MT												
9:30/8:30 MT												
10am / 9 MT							Local USA	Wealthtrack				
10:30/9:30 MT							On Story	Religion & Ethics				
11am / 10 MT							On Call ▼	Tavis Smiley	Tavis Smiley/ SD Focus ▼ (5/18)	Tavis Smiley	Tavis Smiley	Documentary, news, science, nature
11:30/10:30MT												
Noon / 11 MT	Overheard w/ Smith	Global 3000	To the Contrary	Scully/World Show	Well Read	History, Documentary & repeats of top programming from previous week						
12:30/11:30MT	Religion & Ethics	Focus on Europe	American Forum	Second Opinion	Closer to Truth							
1pm / Noon MT	Documentary, news, science, nature & repeats of previous day's SDPB2 primetime programming	Documentary	America ReFramed	Documentary, news, science, nature & repeats of previous day's SDPB2 primetime.	Documentary, news, science, nature & repeats of previous day's SDPB2 primetime.							
1:30/12:30 MT		Pacific Heartbeat/ Jeremiah (5/31)										
2pm / 1 MT		Local USA										
2:30/1:30 MT		On Story										
3pm/2 MT												
3:30/2:30MT												
4pm / 3 MT	Newsline	SD Focus	Newsline	Newsline	Newsline		To The Contrary					
	DW News	DW News					Washington Week					
5pm / 4 MT	Local USA	Documentary	Documentary	Documentary	Documentary	NewsHour Wkend						
5:30 / 4:30 MT	On Story					Point Taken	NewsHour Wkend					

Create – SDPB3 Programming

SDPB3	SUNDAY & WEDNESDAY		MONDAY & FRIDAY		TUESDAY & THURSDAY		SATURDAY THEME DAYS
5am / 4 MT	Fit 2 Stitch		F&P's Love of Quilting		Knit & Crochet Now!		May 7 "Mama Lidia"
5:30/4:30 MT	Scheewe Art Workshpp		Paint This with Jerry Yarnell		Joy of Painting		
6am / 5 MT	Bake Decorate Celebrate!		Weeknight Meals/ BBQ (5/30)		Cooking w/ Nick Stellino		
6:30/5:30 MT	Mexico One Plate at a Time		Project Smoke		P. Allen Smith's Garden to Table		
7am / 6 MT	Healthful Indian Flavors		Chef John Besh's New Orleans		Dining with the Chef		
7:30/6:30 MT	Ciao Italia/ Jazzy Vegetarian (5/4)		Scandinavian Cooking/Taste of Islands		Christina Cooks		
8am / 7 MT	Wild Photo Adventures/Travel w/ Kids (5/4)		Pedal America/Dream of Italy (5/16)		Smart Travels		
8:30/7:30 MT	Journeys in Japan		Travelscope		Island without Cars/Travels w/ Darley (5/10)		
9am / 8 MT	Lakota Berenstain Bears		This Old House		Hometime		
9:30/8:30 MT	American Woodshop		Rough Cut – Woodworking		Woodsmith Shop		
10am / 9 MT	Grow a Greener World		P. Allen Smith's Garden Home		The Victory Garden's Edible Feast		May 28 "Red, White and BBQ"
10:30/9:30 MT	Beads, Baubles & Jewels		Start Up		Urban Conversion/Pursuit of Passion (5/17)		
11am / 10 MT	Cooking (var.)	Fit 2 Stitch	F&P's Love of Quilting		Knit & Crochet Now!		Signing Time! Biz Kid\$ Zula Patrol Space Racers SciGirls Arthur WordGirl Wild Kratts Little Amadeus Zoboomafoo Martha Speaks Nature Adven.
11:30/10:30MT	Various	Scheewe Art Workshop	Paint This with Jerry Yarnell		Joy of Painting		
Noon/ 11 MT	Odd Squad	Bake! Decorate! Celebrate!	Weeknight Meals/ BBQ (5/30)		Cooking w/ Nick Stellino		
12:30/11:30MT	Odd Squad	Secret of a Chef	Project Smoke		P. Allen Smith's Garden to Table		
1pm/ Noon MT	Arthur	Healthful Indian Flavors	Chef John Besh's New Orleans		Dining with the Chef		
1:30/12:30 MT	Cyberchase	Italia/Vegetarian (5/4)	Scandinavian Cooking/Taste of Islands (5/20)		Christina Cooks/Cooking Confidence (5/12)		
2pm/ 1 MT	Word Girl	Photo Adventures/Travel Kids (5/4)	Pedal America/Dream of Italy (5/16)		Smart Travels		
2:30/1:30 MT	Sesame Street	Journeys in Japan	Travelscope		Island without Cars/Travels w. Darley (5/10)		
3pm/2 MT	Peg + Cat	Rick Steves' Europe	Rick Steves' Europe		Rick Steves' Europe		
3:30/2:30MT	Barney & Friends	American Woodshop	Rough Cut – Woodworking		Woodsmith Shop		
4pm/ 3 MT	Mister Rogers	Garden Smart	P. Allen Smith's Garden Home		The Victory Garden's Edible Feast		
4:30/3:30MT	Berenstain Bears	Beads, Baubles, & Jewels	Start Up		Urban Conversion/Pursuit of Passion (5/17)		
5pm / 4 MT	Clifford	This Old House	This Old House		Hometime		
5:30/4:30 MT	Hands on Crafts	Jacques Pepin	Jacques Pepin: Heart & Soul		Heart & Soul/Weeknight Meals (5/19)		
6pm / 5 MT	Annabel Langbein: The Free Range		Simply Ming		JoAnne Weir Gets Fresh		
6:30/5:30 MT	Essential Pepin		Jacques Pepin: More Fast Food		Cooking		
7pm / 6 MT	Martha Bakes	Lidia's Kitchen	Lidia's Kitchen		Martha Bakes		
7:30/6:30 MT	America's Test	Cook's Country	Cook's Country		America's Test Kitchen		
8pm / 7 MT	Chef's Life	Moveable Feast	Moveable Feast/Mexican Table (5/6)		Chef's Life		
8:30/7:30 MT	Heart & Soul/Weeknight Meals (5/18)		Heart & Soul/Weeknight Meals (5/20)		Heart & Soul/Weeknight Meals		
9pm / 8 MT	This Old House		This Old House		Hometime		
9:30/8:30 MT	Rick Steves' Europe		Richard Bangs' Adventures		Travelscope		
10pm / 9 MT	Curious Traveler/Pedal America (5/15)				Wild Photo Adventures		
10:30/9:30 MT	Martha Bakes	Lidia's Kitchen	Lidia's Kitchen		Martha Bakes		
11pm / 10 MT	America's Test	Cook's Country	Cook's Country		America's Test Kitchen		
11:30/10:30MT	Annabel Langbein: The Free Range		Simply Ming		JoAnne Weir Gets Fresh		
Mid./ 11 MT	Bake Decorate Celebrate!		Sara's Weeknight Meals		Cooking w/ Nick Stellino		
12:30/11:30MT	Music Voyager/Curious Traveler (5/29)		Painting the Town		Art Wolfe's Travels to the Edge		
1am/Mid. MT	Lidia's Kitchen	Martha Bakes	Martha Bakes		Lidia's Kitchen		
1:30/12:30 MT	America's Test Kitchen		America's Test Kitchen		Cook's Country		
2am/ 1 MT	Feast/ Mexican Table	Chef's Life	Chef's Life		Moveable Feast/Mexican Table (5/10)		
2:30/1:30 MT	Heart & Soul/Weeknight Meals (5/18)		Heart & Soul/Weeknight Meals (5/20)		Heart & Soul/Weeknight Meals (5/19)		
3am/2 MT	This Old House	Hometime	This Old House		This Old House		
3:30/2:30MT	Richard Bangs' Adventures	Travel Scope	Rick Steves' Europe		Richard Bangs' Adventures	Rick Steves' Europe	
4am/3 MT		Wild Photo Adventures	Curious Traveler	Wild Photo		Curious Traveler	
4:30/3:30 MT	Lidia's Kitchen	Martha Bakes	Martha Bakes		Lidia's Kitchen		

- SDPB Television programs are Closed Captioned for the Hearing Impaired.
- Schedule is subject to change. Visit SDPB.org/tvschedules for program details and schedule changes.
- 📺 Indicates locally produced programming.
- SDPB2 and SDPB3 are available free over-the-air via antenna and on most cable systems. Call your local provider to find out where you can find them on your cable system.



Photo: Providence Pictures

More than 2,000 years ago, the thriving city of Petra rose up in the bone-dry desert of what is now Jordan. An oasis of culture and abundance, the city was built by wealthy merchants who carved spectacular temple-tombs into its cliffs, raised a monumental Great Temple and devised an ingenious system that channeled water to vineyards, bathhouses, fountains and pools. But following a catastrophic earthquake and a slump in its desert trade routes, Petra's unique culture faded and was lost to most of the world for nearly 1,000 years. Now, in a daring experiment, an archaeologist and sculptors team up for **NOVA Petra: Lost City of Stone** to carve an iconic temple-tomb to find out how the ancient people of Petra built their city.

SDPB1: Wednesday, May 4, 9pm (8 MT)

SDPB2: Thursday, May 5, 7pm & Midnight (6 & 11pm MT)

SUNDAY – MAY 1

SDPB1

- 1:00** (Noon MT) **SD Symphony's Young People's Concert** 🐦
- 2:00** (1:00 MT) **Ode to Joy: Beethoven's Symphony**
- 3:00** (2:00 MT) **Two Feet from the Audience**
- 4:00** (3:00 MT) **Rick Steves' Europe Italy's Riviera: Cinque Terre**
- 4:30** (3:30 MT) **Nature Adventures** 🐦 *The Living Coast*
- 5:00** (4:00 MT) **Antiques Roadshow Omaha**
- 6:00** (5:00 MT) **Midsomer Murders**
- 7:00** (6:00 MT) **Call the Midwife**
- 8:00** (7:00 MT) **Masterpiece Grantchester**
- 9:00** (8:00 MT) **Masterpiece Mr. Selfridge**
- 10:00** (9:00 MT) **Chris Tarrant: Extreme Railways The Great Japanese Train Ride**
- 11:00** (10:00 MT) **Chris Tarrant: Extreme Railways The Railway that Created Canada**
- Midnight** (11:00 MT) **Washington Week**

SDPB2

- 1:00** (Noon MT) **Point Taken**
- 1:30** (12:30 MT) **Washington Week**
- 2:00** (1:00 MT) **McLaughlin Group**
- 2:30** (1:30 MT) **Open Mind**
- 3:00** (2:00 MT) **Focus on Europe**
- 3:30** (2:30 MT) **Global 3000**
- 4:00** (3:00 MT) **Light of the Prairie: Stained Glass in South Dakota** 🐦
- 5:00** (4:00 MT) **PBS NewsHour Weekend**
- 5:30** (4:30 MT) **Trees in Trouble**
- 6:00** (5:00 MT) **Real Adam Smith Morality & Markets**
- 7:00** (6:00 MT) **Nature Owl Power**
- 8:00** (7:00 MT) **10 Towns that Changed America**

- 9:00** (8:00 MT) **Global Voices In the Matter of Cha Jung Hee**
- 10:00** (9:00 MT) **Independent Lens Twin Sisters**
- 11:00** (10:00 MT) **Nature Owl Power**
- Midnight** (11:00 MT) **10 Towns that Changed America**

MONDAY – MAY 2

SDPB1

- 6:00** (5:00 MT) **PBS NewsHour**
- 7:00** (6:00 MT) **Antiques Roadshow Omaha**
- 8:00** (7:00 MT) **Antiques Roadshow Detroit**
- 9:00** (8:00 MT) **Independent Lens My Nazi Legacy: What Our Fathers Did**
- 10:30** (9:30 MT) **BBC World News**
- 11:00** (10:00 MT) **Charlie Rose**
- Midnight** (11:00 MT) **Tavis Smiley**

SDPB2

- 6:00** (5:00 MT) **Ka Hana Kapa**
- 7:00** (6:00 MT) **Pacific Heartbeat**
- 8:00** (7:00 MT) **Local USA Building an Identity**
- 8:30** (7:30 MT) **On Story Zombies & Groot-Bringing Comics to Life**
- 9:00** (8:00 MT) **PBS NewsHour**
- 10:00** (9:00 MT) **Nightly Business Report**
- 10:30** (9:30 MT) **Religion & Ethics Newsweekly**
- 11:00** (10:00 MT) **Ka Hana Kapa**
- Midnight** (11:00 MT) **Pacific Heartbeat**

TUESDAY – MAY 3

SDPB1

- 6:00** (5:00 MT) **PBS NewsHour**
- 7:00** (6:00 MT) **American Masters Janis Joplin**
- 9:00** (8:00 MT) **Frontline Benghazi in Crisis**
- 10:00** (9:00 MT) **Keeping Up Appearances**
- 11:00** (10:00 MT) **Charlie Rose**
- Midnight** (11:00 MT) **Point Taken**

SDPB2

- 6:00** (5:00 MT) **Refuge: Stories of the Selfhelp Home**
- 7:00** (6:00 MT) **America ReFramed Winning Girl**
- 8:00** (7:00 MT) **Chinese Couplets**
- 9:00** (8:00 MT) **PBS NewsHour**
- 10:00** (9:00 MT) **Nightly Business Report**
- 10:30** (9:30 MT) **Religion & Ethics Newsweekly**
- 11:00** (10:00 MT) **America ReFramed Winning Girl**
- Midnight** (11:00 MT) **Chinese Couplets**

WEDNESDAY – MAY 4

SDPB1

- 6:00** (5:00 MT) **PBS NewsHour**
- 7:00** (6:00 MT) **Nature The Last Orangutan Eden**
- 8:00** (7:00 MT) **NOVA Great Lighthouse Rescue**
- 9:00** (8:00 MT) **NOVA Petra: Lost City of Stone**
- 10:00** (9:00 MT) **Vicious**
- 11:00** (10:00 MT) **Charlie Rose**
- Midnight** (11:00 MT) **Tavis Smiley**

SDPB2

- 6:00** (5:00 MT) **Our American Family: The Furutas**
- 7:00** (6:00 MT) **Independent Lens My Nazi Legacy: What Our Fathers Did**
- 8:00** (7:00 MT) **Frontline Benghazi in Crisis**
- 9:00** (8:00 MT) **PBS NewsHour**
- 10:00** (9:00 MT) **Nightly Business Report**
- 10:30** (9:30 MT) **Focus on Europe**
- 11:00** (10:00 MT) **Our American Family: The Furutas**
- Midnight** (11:00 MT) **Independent Lens My Nazi Legacy: What our Fathers Did**

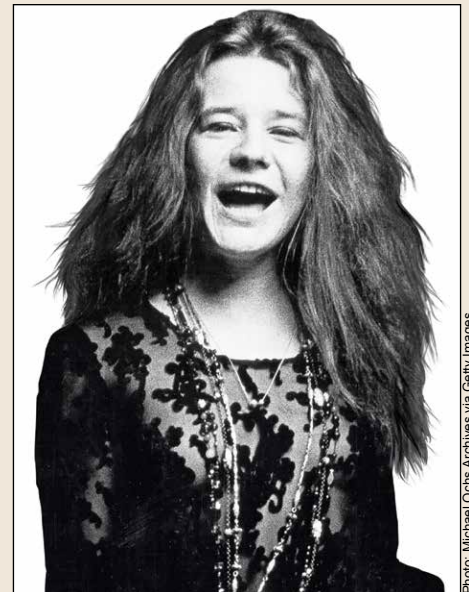


Photo: Michael Ochs Archives via Getty Images

On American Masters: Janis Joplin, observe the iconic singer through intimate letters and rare footage in the first in-depth celebration of her life and career. Director Amy Berg presents a portrait of a complicated, driven, often beleaguered artist. Narrated by singer-songwriter Chan Marshall (also known by her stage name "Cat Power").

SDPB1: Tuesday, May 3, 7pm (6 MT)
SDPB2: Saturday, May 7, 7 & 11pm (6 & 10pm MT)



Photo: Brad Barber

William "Dub" Lawrence recreates the police standoff with his son-in-law Brian Wood. A former sheriff who established and trained Utah's first SWAT team, Lawrence watched in horror as that same unit killed his son-in-law in a controversial standoff years later. In **Independent Lens** *Peace Officer*, Dub uses his investigative skills to uncover the truth about that incident and other officer-involved shootings in his community, while tackling larger questions about the changing face of police investigations nationwide.

SDPB1: Monday, May 9, 8pm (7 MT)

SDPB2: Wednesday, May 11, 6:30 & 11:30pm (5:30 & 10:30pm MT)

THURSDAY – MAY 5

SDPB1

6:00 (5:00 MT) **PBS NewsHour**
 7:00 (6:00 MT) **On Call** ♡ *Breast Cancer*
 8:00 (7:00 MT) **Dakota Life** ♡ *Spokes People: Two Wheel Transportation*
 8:30 (7:30 MT) **Dakota Life** ♡ *Food & Fun*
 9:00 (8:00 MT) **Doc Martin**
 10:00 (9:00 MT) **Detectorists**
 10:30 (9:30 MT) **BBC World News**
 11:00 (10:00 MT) **Charlie Rose**
 Midnight (11:00 MT) **Tavis Smiley**

SDPB2

6:00 (5:00 MT) **NOVA** *Great Lighthouse Rescue*
 7:00 (6:00 MT) **NOVA** *Petra: Lost City of Stone*
 9:00 (8:00 MT) **PBS NewsHour**
 10:00 (9:00 MT) **Nightly Business Report**
 10:30 (9:30 MT) **Scully/The World Show**
 11:00 (10:00 MT) **NOVA** *Great Lighthouse Rescue*
 Midnight (11:00 MT) **NOVA** *Petra: Lost City of Stone*

FRIDAY – MAY 6

SDPB1

6:00 (5:00 MT) **PBS NewsHour**
 7:00 (6:00 MT) **Washington Week**
 7:30 (6:30 MT) **Charlie Rose** — *The Week*
 8:00 (7:00 MT) **McLaughlin Group**
 8:30 (7:30 MT) **Market to Market**
 9:00 (8:00 MT) **Jazz** *Dedicated to Chaos (1940-1945)*
 11:00 (10:00 MT) **Charlie Rose**
 Midnight (11:00 MT) **Tavis Smiley**

SDPB2

6:00 (5:00 MT) **Japanese American Lives**
Mrs. Judo: Be Strong, Be Gentle, Be Beautiful
 7:00 (6:00 MT) **Japanese American Lives**
Don't Lose Your Soul/Honor & Sacrifice

8:00 (7:00 MT) **Japanese American Lives**
Stories from Tohoku
 9:00 (8:00 MT) **PBS NewsHour**
 10:00 (9:00 MT) **Nightly Business Report**
 10:30 (9:30 MT) **Focus on Europe**
 11:00 (10:00 MT) **Japanese American Lives**
Mrs. Judo: Be Strong, Be Gentle, Be Beautiful
 11:30 (10:30 MT) **Japanese American Lives**
Don't Lose Your Soul/Honor & Sacrifice

SATURDAY – MAY 7

SDPB1

1:00 (Noon MT) **Woodsmith Shop**
 1:30 (12:30 MT) **This Old House Hour**
 2:30 (1:30 MT) **Martha Bakes**
 3:00 (2:00 MT) **America's Test Kitchen**
 3:30 (2:30 MT) **Victory Garden's Edible Feast**
 4:00 (3:00 MT) **Garden Smart**
 4:30 (3:30 MT) **America's Heartland**
 5:00 (4:00 MT) **Classic Gospel**
 6:00 (5:00 MT) **Lawrence Welk Show**
 7:00 (6:00 MT) **Doc Martin**
 8:00 (7:00 MT) **Keeping Up Appearances**
 8:30 (7:30 MT) **As Time Goes By**
 9:00 (8:00 MT) **Father Brown**
 10:00 (9:00 MT) **No Cover, No Minimum** ♡
Monophonic
 11:00 (10:00 MT) **Austin City Limits** *Gary Clark Jr. / Courtney Barnett*
 Midnight (11:00 MT) **Live from the Artists Den**
Damien Rice

SDPB2

1:00 (Noon MT) **Japanese American Lives**
Mrs. Judo: Be Strong, Be Gentle, Be Beautiful
 2:00 (1:00 MT) **Japanese American Lives**
Don't Lose Your Soul/Honor & Sacrifice
 3:00 (2:00 MT) **Japanese American Lives**
Stories from Tohoku
 4:00 (3:00 MT) **To the Contrary w/ Bonnie Erbe**
 4:30 (3:30 MT) **Washington Week**
 5:00 (4:00 MT) **PBS NewsHour Weekend**
 5:30 (4:30 MT) **Point Taken**
 6:00 (5:00 MT) **Focus on Europe**
 6:30 (5:30 MT) **Global 3000**
 7:00 (6:00 MT) **American Masters** *Janis Joplin*
 9:00 (8:00 MT) **America ReFramed** *Winning Girl*
 10:00 (9:00 MT) **E Haku Inoa: To Weave a Name**
 11:00 (10:00 MT) **American Masters** *Janis Joplin*

SUNDAY – MAY 8

SDPB1

1:00 (Noon MT) **Dakota Life** ♡ *Spokes People: Two Wheel Transportation*
 1:30 (12:30 MT) **Dakota Life** ♡ *Food & Fun*
 2:00 (1:00 MT) **Wisdom of the Grandmothers**
 3:00 (2:00 MT) **On Life's Terms: Mothers in Recovery**
 4:00 (3:00 MT) **Rick Steves' Europe** *Italy's Veneto: Verona, Padua, and Ravenna*
 4:30 (3:30 MT) **Nature Adventures** ♡
Exploring Mobile, Alabama
 5:00 (4:00 MT) **Antiques Roadshow** *Omaha*
 6:00 (5:00 MT) **Midsomer Murders**
 7:00 (6:00 MT) **Call the Midwife**
 8:00 (7:00 MT) **Masterpiece** *Wallander*
 9:30 (8:30 MT) **Masterpiece** *Mr. Selfridge*
 10:30 (9:30 MT) **Georgie O'Keeffe: A Woman on Paper**

11:00 (10:00 MT) **Globe Trekker** *Food Hour: Ireland*
 Midnight (11:00 MT) **Washington Week**

SDPB2

1:00 (Noon MT) **Point Taken**
 1:30 (12:30 MT) **Washington Week**
 2:00 (1:00 MT) **McLaughlin Group**
 2:30 (1:30 MT) **Washington Week**
 3:00 (2:00 MT) **Focus on Europe**
 3:30 (2:30 MT) **Global 3000**
 4:00 (3:00 MT) **America ReFramed** *Winning Girl*
 5:00 (4:00 MT) **PBS NewsHour Weekend**
 5:30 (4:30 MT) **Dakota Life** ♡ *Spokes People: Two Wheel Transportation*
 6:00 (5:00 MT) **Real Adam Smith** *Ideas that Changed the World*
 7:00 (6:00 MT) **Nature** *The Last Orangutan Eden*
 8:00 (7:00 MT) **10 Homes that Changed America**
 9:00 (8:00 MT) **Global Voices** *Bolinas 52*
 10:00 (9:00 MT) **Global Voices** *A Village Called Versailles*
 11:00 (10:00 MT) **Nature** *The Last Orangutan Eden*
 Midnight (11:00 MT) **10 Homes that Changed America**

MONDAY – MAY 9

SDPB1

6:00 (5:00 MT) **PBS NewsHour**
 7:00 (6:00 MT) **Antiques Roadshow** *Cleveland*
 8:00 (7:00 MT) **Independent Lens** *Peace Officer*
 10:30 (9:30 MT) **BBC World News**
 11:00 (10:00 MT) **Charlie Rose**
 Midnight (11:00 MT) **Tavis Smiley**

SDPB2

6:00 (5:00 MT) **War for Guam**
 7:00 (6:00 MT) **Pacific Heartbeat** *The Illness and the Odyssey*
 8:00 (7:00 MT) **Local USA** *Fishing Pono*
 8:30 (7:30 MT) **On Story** *Rodrigo Garcia on Writing Relations*
 9:00 (8:00 MT) **PBS NewsHour**
 10:00 (9:00 MT) **Nightly Business Report**
 10:30 (9:30 MT) **Religions and Ethics Newsweekly**
 11:00 (10:00 MT) **War for Guam**
 11:30 (10:30 MT) **Pacific Heartbeat** *The Illness and the Odyssey*

TUESDAY – MAY 10

SDPB1

6:00 (5:00 MT) **PBS NewsHour**
 7:00 (6:00 MT) **Independent Lens** *The Armor of Light*
 10:00 (9:00 MT) **Keeping Up Appearances**
 10:30 (9:30 MT) **BBC World News**
 11:00 (10:00 MT) **Charlie Rose**
 Midnight (11:00 MT) **Point Taken**

SDPB2

6:00 (5:00 MT) **Global Voices** *Here Comes Uncle Joe*
 7:00 (6:00 MT) **America ReFramed** *The Grace Lee Project*
 8:30 (7:30 MT) **Local USA** *Building an Identity*
 9:00 (8:00 MT) **PBS NewsHour**
 10:00 (9:00 MT) **Nightly Business Report**
 10:30 (9:30 MT) **Global 3000**
 11:00 (10:00 MT) **America ReFramed** *The Grace Lee Project*

WEDNESDAY – MAY 11

SDPB1

- 6:00 (5:00 MT) **PBS NewsHour**
- 7:00 (6:00 MT) **Nature** *Nature's Perfect Partners*
- 8:00 (7:00 MT) **NOVA** *Bombing Hitler's Supergun*
- 9:00 (8:00 MT) **Nazi Mega Weapons** *Blitzkrieg*
- 10:00 (9:00 MT) **Vicious**
- 10:30 (9:30 MT) **BBC World News**
- 11:00 (10:00 MT) **Charlie Rose**
- Midnight (11:00 MT) **Point Taken**

SDPB2

- 6:00 (5:00 MT) **Memory of Forgotten War**
- 6:30 (5:30 MT) **Independent Lens** *Peace Officer*
- 9:00 (8:00 MT) **PBS NewsHour**
- 10:00 (9:00 MT) **Nightly Business Report**
- 10:30 (9:30 MT) **Focus on Europe**
- 11:00 (10:00 MT) **Memory of Forgotten War**
- 11:30 (10:30 MT) **Independent Lens** *Peace Officer*

THURSDAY – MAY 12

SDPB1

- 6:00 (5:00 MT) **PBS NewsHour**
- 7:00 (6:00 MT) **On Call** *Sexual Health at Any Age*
- 8:00 (7:00 MT) **South Dakota Focus** *Infrastructure: South Dakota's Water Systems*
- 9:00 (8:00 MT) **Doc Martin**
- 10:00 (9:00 MT) **Detectorists**
- 10:30 (9:30 MT) **BBC World News**
- 11:00 (10:00 MT) **Charlie Rose**
- Midnight (11:00 MT) **Tavis Smiley**

SDPB2

- 6:00 (5:00 MT) **Nature** *Nature's Perfect Partners*
- 7:00 (6:00 MT) **NOVA** *Bombing Hitler's Supergun*
- 8:00 (7:00 MT) **Seized: Inside the Mystery of Epilepsy**

- 9:00 (8:00 MT) **PBS NewsHour**
- 10:00 (9:00 MT) **Nightly Business Report**
- 10:30 (9:30 MT) **Scully/The World Show**
- 11:00 (10:00 MT) **Nature** *Nature's Perfect Partners*
- Midnight (11:00 MT) **NOVA** *Bombing Hitler's Supergun*

FRIDAY – MAY 13

SDPB1

- 6:00 (5:00 MT) **PBS NewsHour**
- 7:00 (6:00 MT) **Washington Week**
- 7:30 (6:30 MT) **Charlie Rose—The Week**
- 8:00 (7:00 MT) **McLaughlin Group**
- 8:30 (7:30 MT) **Market to Market**
- 9:00 (8:00 MT) **Jazz Risk** (1945-1955)
- 11:00 (10:00 MT) **Charlie Rose**
- Midnight (11:00 MT) **Tavis Smiley**

SDPB2

- 6:00 (5:00 MT) **Independent Lens** *The Armor of Light*
- 9:00 (8:00 MT) **PBS NewsHour**
- 10:00 (9:00 MT) **Nightly Business Report**
- 10:30 (9:30 MT) **Asia Insight**
- 11:00 (10:00 MT) **Independent Lens** *The Armor of Light*

SATURDAY – MAY 14

SDPB1

- 1:00 (Noon MT) **Woodsmith Shop**
- 1:30 (12:30 MT) **This Old House Hour**
- 2:30 (1:30 MT) **Martha Bakes**
- 3:00 (2:00 MT) **America's Test Kitchen**
- 3:30 (2:30 MT) **Victory Garden's Edible Feast**
- 4:00 (3:00 MT) **Garden Smart**
- 4:30 (3:30 MT) **America's Heartland**
- 5:00 (4:00 MT) **Classic Gospel**
- 6:00 (5:00 MT) **Lawrence Welk Show**
- 7:00 (6:00 MT) **Doc Martin**
- 8:00 (7:00 MT) **Keeping Up Appearances**
- 8:30 (7:30 MT) **As Time Goes By**
- 9:00 (8:00 MT) **Father Brown**



Photo: Paul J. Hoefler

Billie Holiday on stage in Rochester, NY, 1957. Acclaimed filmmaker Ken Burns tells the story of **JAZZ** — the quintessential American art form. The 10-part series follows the growth and development of jazz music from its beginnings to the present.

SDPB1: Fridays, May 6, 13, & 20, 9pm (8 MT)

10:00 (9:00 MT) **No Cover, No Minimum** *Gordy Pratt*

11:00 (10:00 MT) **Austin City Limits** *Kendrick Lamar*

Midnight (11:00 MT) **Live from the Artists Den** *Hozier*

SDPB2

- 1:00 (Noon MT) **China's Challenges** *Can China be Harmonious?*
- 2:00 (1:00 MT) **China's Challenges** *Can China be Beautiful?*
- 3:00 (2:00 MT) **China's Challenges** *Does China's Civilization Matter?*
- 4:00 (3:00 MT) **To the Contrary**
- 4:30 (3:30 MT) **Washington Week**
- 5:00 (4:00 MT) **PBS NewsHour Weekend**
- 5:30 (4:30 MT) **Point Taken**
- 6:00 (5:00 MT) **Focus on Europe**
- 6:30 (5:30 MT) **Global 3000**
- 7:00 (6:00 MT) **Independent Lens** *In Football We Trust*
- 8:30 (7:30 MT) **One Night in March**
- 9:00 (8:00 MT) **America ReFramed** *The Grace Lee Project*
- 10:30 (9:30 MT) **Local USA** *Building an Identity*
- 11:00 (10:00 MT) **One Night in March**

SUNDAY – MAY 15

SDPB1

- 1:00 (Noon MT) **South Dakota Focus** *Infrastructure: South Dakota's Water Systems*
- 2:00 (1:00 MT) **Real Adam Smith** *Morality & Markets*
- 3:00 (2:00 MT) **Real Adam Smith** *Ideas that Changed the World*
- 4:00 (3:00 MT) **Rick Steves' Europe** *Amsterdam*
- 4:30 (3:30 MT) **Nature Adventures** *Best of Florida*
- 5:00 (4:00 MT) **Antiques Roadshow** *Cleveland*
- 6:00 (5:00 MT) **Midsomer Murders**
- 7:00 (6:00 MT) **Call the Midwife**
- 8:00 (7:00 MT) **Masterpiece** *Wallander*
- 9:30 (8:30 MT) **Masterpiece** *Mr. Selfridge*
- 10:30 (9:30 MT) **Nancy Hart Militia: Women of Uncommon Courage**
- 11:00 (10:00 MT) **Globe Trekker** *Puerto Rico*
- Midnight (11:00 MT) **Washington Week**



Photo: Anup Shah

African elephants dig out a mud wallow with calf aged 3-6 months at Masai Mara National Reserve, Kenya. There are times in life when all you need is a little help. Sea and land animals collaborate using brainpower to solve complex problems and stay alive. On **Nature** *Nature's Perfect Partners*, learn the value of teamwork among animal partners, even ones as odd but perfect as hippo and fish.

SDPB1: Wednesday, May 11, 7pm (6 MT)

SDPB2: Thursday, May 12, 6 & 11pm (5 & 10pm MT); Sunday, May 15, 7 & 11pm (6 & 10pm MT)

(May 15, continued)

SDPB2

- 1:00 (Noon MT) **Point Taken**
- 1:30 (12:30 MT) **Washington Week**
- 2:00 (1:00 MT) **McLaughlin Group**
- 2:30 (1:30 MT) **Open Mind**
- 3:00 (2:00 MT) **Focus on Europe**
- 3:30 (2:30 MT) **Global 3000**
- 4:00 (3:00 MT) **Badlands: Nature's Time Capsule**
- 5:00 (4:00 MT) **PBS NewsHour Weekend**
- 5:30 (4:30 MT) **Local USA Building an Identity**
- 6:00 (5:00 MT) **Filipino American Lives**
Harana: The Search for the Lost Art of Serenade
- 7:00 (6:00 MT) **Nature Nature's Perfect Partners**
- 8:00 (7:00 MT) **10 Buildings that Changed America**
- 9:00 (8:00 MT) **Global Voices Miss Nikki and the Tiger Girls**
- 10:00 (9:00 MT) **Independent Lens India's Daughter**
- 11:00 (10:00 MT) **Nature Nature's Perfect Partners**
- Midnight (11:00 MT) **10 Buildings that Changed America**

MONDAY – MAY 16

SDPB1

- 6:00 (5:00 MT) **PBS NewsHour**
- 7:00 (6:00 MT) **Antiques Roadshow Cleveland**
- 8:00 (7:00 MT) **Antiques Roadshow Baton Rouge**
- 9:00 (8:00 MT) **Independent Lens Dogtown Redemption**
- 10:00 (9:00 MT) **Red Green Show**
- 10:30 (9:30 MT) **BBC World News**
- 11:00 (10:00 MT) **Charlie Rose**
- Midnight (11:00 MT) **Tavis Smiley**

SDPB2

- 6:00 (5:00 MT) **Pidgin: The Voice of Hawaii**
- 7:00 (6:00 MT) **Pacific Heartbeat Nā Loea: The Masters**
- 8:00 (7:00 MT) **Local USA Breadfruit and Open Spaces**
- 8:30 (7:30 MT) **On Story Gary Ross on Drive and Inspiration**



Photo: Genealogy Roadshow

Part detective story, part emotional journey, **Genealogy Roadshow** combines history and science to uncover fascinating stories of diverse Americans. Over the course of the series, genealogists Kenyatta D. Berry, Joshua Taylor and Mary Tedesco work with anecdotal clues, documents and family heirlooms to unite participants with histories and family they never knew existed. In the third season, the diverse cast of participants featured are from cities around the country, including Boston, Miami, Houston, Los Angeles, and more.

SDPB1: Tuesdays, May 17, 24 & 31, 7pm (6 MT)



Photo: Freya Williams / Bigger Bang Communications

Join Stephen Hawking as he challenges three ordinary people to determine if time travel is possible on **Genius by Stephen Hawking**. The fascinating journey of discovery features DeLoreans, atomic clocks, a giant black hole and a large swath of New York City.

SDPB1: Wednesdays, May 18 & 25, 8pm (7 MT)

SDPB2: Thursdays, May 19 & 26, 6pm (5 MT)

- 9:00 (8:00 MT) **PBS NewsHour**
- 10:00 (9:00 MT) **Nightly Business Report**
- 10:30 (9:30 MT) **Religion & Ethics Newsweekly**
- 11:00 (10:00 MT) **Pidgin: The Voice of Hawaii**
- Midnight (11:00 MT) **Pacific Heartbeat Nā Loea: The Masters**

TUESDAY – MAY 17

SDPB1

- 6:00 (5:00 MT) **PBS NewsHour**
- 7:00 (6:00 MT) **Genealogy Roadshow Albuquerque**
- 8:00 (7:00 MT) **Secrets of the Dead Cleopatra's Lost Tomb**
- 9:00 (8:00 MT) **Frontline The Secret History of Isis**
- 10:00 (9:00 MT) **Keeping Up Appearances**
- 10:30 (9:30 MT) **BBC World News**
- 11:00 (10:00 MT) **Charlie Rose**
- Midnight (11:00 MT) **Point Taken**

SDPB2

- 6:00 (5:00 MT) **Independent Lens Brakeless**
- 7:00 (6:00 MT) **America ReFramed Operation Popcorn**
- 8:30 (7:30 MT) **Memory of Forgotten War**
- 9:00 (8:00 MT) **PBS NewsHour**
- 10:00 (9:00 MT) **Nightly Business Report**
- 10:30 (9:30 MT) **Global 3000**
- 11:00 (10:00 MT) **America ReFramed Operation Popcorn**

WEDNESDAY – MAY 18

SDPB1

- 6:00 (5:00 MT) **PBS NewsHour**
- 7:00 (6:00 MT) **Nature Jungle Animal Hospital**
- 8:00 (7:00 MT) **Genius by Stephen Hawking Can We Time Travel?**
- 9:00 (8:00 MT) **Genius by Stephen Hawking Are We Alone?**
- 10:00 (9:00 MT) **Vicious**
- 10:30 (9:30 MT) **BBC World News**
- 11:00 (10:00 MT) **Charlie Rose**
- Midnight (11:00 MT) **Tavis Smiley**

SDPB2

- 6:00 (5:00 MT) **Mr. Cao Goes to Washington**
- 7:00 (6:00 MT) **Independent Lens Dogtown Redemption**
- 8:00 (7:00 MT) **Frontline The Secret History of Isis**
- 9:00 (8:00 MT) **PBS NewsHour**
- 10:00 (9:00 MT) **Nightly Business Report**
- 10:30 (9:30 MT) **Focus on Europe**
- 11:00 (10:00 MT) **Mr. Cao Goes to Washington**
- Midnight (11:00 MT) **Independent Lens Dogtown Redemption**

THURSDAY – MAY 19

SDPB1

- 6:00 (5:00 MT) **PBS NewsHour**
- 7:00 (6:00 MT) **On Call Nicaragua**
- 8:00 (7:00 MT) **South Dakota Focus** **Active Generations**
- 9:00 (8:00 MT) **Doc Martin**
- 10:00 (9:00 MT) **Detectorists**
- 10:30 (9:30 MT) **BBC World News**
- 11:00 (10:00 MT) **Charlie Rose**
- Midnight (11:00 MT) **Tavis Smiley**

SDPB2

- 6:00 (5:00 MT) **Genius by Stephen Hawking Can We Time Travel?**
- 7:00 (6:00 MT) **Genius by Stephen Hawking Are We Alone?**
- 8:00 (7:00 MT) **Hawking**
- 9:00 (8:00 MT) **PBS NewsHour**
- 10:00 (9:00 MT) **Nightly Business Report**
- 10:30 (9:30 MT) **Scully/The World Show**
- 11:00 (10:00 MT) **Genius by Stephen Hawking Can We Time Travel?**
- Midnight (11:00 MT) **Genius by Stephen Hawking Are We Alone?**

FRIDAY – MAY 20

SDPB1

- 6:00 (5:00 MT) **PBS NewsHour**
- 7:00 (6:00 MT) **Washington Week**
- 7:30 (6:30 MT) **Charlie Rose—The Week**
- 8:00 (7:00 MT) **McLaughlin Group**
- 8:30 (7:30 MT) **Market to Market**
- 9:00 (8:00 MT) **Jazz The Adventure (1955-1960)**
- 11:00 (10:00 MT) **Jazz A Masterpiece by Midnight (1961-Present)**

SDPB2

- 5:30 (4:30 MT) **Independent Lens Jiro Dreams of Sushi**
- 7:00 (6:00 MT) **Soul of a Banquet**
- 8:00 (7:00 MT) **Changing Season: On the Masumoto**
- 9:00 (8:00 MT) **PBS NewsHour**
- 10:00 (9:00 MT) **Nightly Business Report**
- 10:30 (9:30 MT) **Asia Insight**
- 11:00 (10:00 MT) **Soul of a Banquet**
- Midnight (11:00 MT) **Changing Season: On the Masumoto**

SATURDAY – MAY 21

SDPB1

- 1:00 (Noon MT) **Woodsmith Shop**
- 1:30 (12:30 MT) **This Old House Hour**
- 2:30 (1:30 MT) **Martha Bakes**
- 3:00 (2:00 MT) **America's Test Kitchen**
- 3:30 (2:30 MT) **Victory Garden's Edible Feast**

(continued on page 14)



Cycle Farms replaces tractors with humans and bikes.

Photo: Melissa Hamersma Sievers



Yankton celebrates cycling with an annual city-wide bike month.

Photo: Josh Kappler

Dakota Life: Spokes People - Two Wheel Transportation

This month **Dakota Life** surveys bicycling culture in South Dakota. We'll learn about Yankton's Bike Month, a city-wide promotion that encourages Yanktonites to pedal to work and play using the city's extensive bike path system to promote a healthy lifestyle and a cleaner environment.

We'll visit Rapid City-based Strider Sports International, home to the Strider Bike balance bikes that have redefined the bicycle. Invented by Rapid City native Ryan McFarland for his two-year-old son, Strider Bikes are lightweight and pedal-free to promote stability and coordination in toddlers and tykes

just graduating to two-wheelers. Strider sponsors the 2016 Strider Cup World Championship races, which attract youth from all over the world.

And we'll profile Cycle Farm, a small human-powered, bicycle-driven agricultural operation in the Spearfish Valley. Cycle Farm grows over 40 kinds of crops, made available to local restaurants and consumers. The company has substituted people and bicycles for tractors to keep down costs and carbon emissions.

Tune in to **Dakota Life** on SDPB1, Thursday, May 5 at 8pm (7 MT) and again on Sunday, May 8 at 1pm (Noon MT).

SDPB Podcasts



Nate Wek.

For the week's biggest and best stories from SDPB Radio, check out **Dakota Digest** podcast from SDPB. Each week host Nate Wek uploads a wrap up of the most important news items from around the state.

And for sports-oriented conversations with South Dakotans, tune into the **DakotaCast** Podcast. You can go behind-the-scenes of high school, college, and pro sports in interviews with Summit League Commissioner Tom Double, Sioux Falls O'Gorman Gymnastics Coach Skye Bork, and SDSU Basketball Coach Deondre Parks, or listen in as Nate talks sports with Sioux Falls Mayor Mike Huether.

To listen or subscribe to **Dakota Digest** and **DakotaCast**, go to listen.SDPB.org or wherever you download podcasts.





Exclusive Escorted Tours!

Bursch Travel has taken care of all the details on these exclusive trips.
All you have to do is sit back and enjoy!



ROYAL CARIBBEAN ALASKAN ADVENTURE

August 12-19, 2016
Escorted by Pat Converse
Bursch Travel Alexandria

BEST OF ITALY

Oct 14-26, 2016
Escorted by Donna Strommen
Bursch Travel Alexandria

BEST OF THE BIG APPLE

#1 Sept 29 – Oct 3, 2016
Please join us for a unique and completely
customized tour of New York City.

BEST OF THE BIG APPLE

#2 Oct 20-24, 2016 – MEA WEEKEND
Please join us for a unique and completely
customized tour of New York City.

SHIRINES OF ITALY

Oct 18-28, 2016
Spiritual Leader – Ft. Aaron Nett
Highlights...Vatican City Papal Audience,
Christian Rome City Tour plus more!

PANAMA CANAL WITH PRINCESS CRUISES

April 17 – May 2, 2017
Join Fred and Terri Bursch on the Coral
Princess as it sails through the Panama Canal.

For complete details of each of these trips and others visit www.burschtravel.com

Bursch Travel Agency, 803 Saint Patrick Street, Rapid City SD 57701
605-342-2700 or 800-658-3348

PLAN NOW.
**PLAY LATER
IN HAWAI'I.**

Let's Vacation™



Bursch Travel
803 St. Patrick St.
605-342-2700



(May 21 continued from page 11)

- 4:00 (3:00 MT) **Garden Smart**
- 4:30 (3:30 MT) **America's Heartland**
- 5:00 (4:00 MT) **Classic Gospel**
- 6:00 (5:00 MT) **Lawrence Welk Show**
- 7:00 (6:00 MT) **Doc Martin**
- 8:00 (7:00 MT) **Keeping Up Appearances**
- 8:30 (7:30 MT) **As Time Goes By**
- 9:00 (8:00 MT) **Father Brown**
- 10:00 (9:00 MT) **No Cover, No Minimum**

Hank Harris

- 11:00 (10:00 MT) **Austin City Limits Foo Fighters**

- Midnight (11:00 MT) Live from the Artists Den** *Alt-J*

SDPB2

- 1:00 (Noon MT) **Soul of a Banquet**
- 2:00 (1:00 MT) **Changing Season: On the Masumoto**
- 3:00 (2:00 MT) **POV *Fallen City***
- 4:00 (3:00 MT) **To the Contrary**
- 4:30 (3:30 MT) **Washington Week**
- 5:00 (4:00 MT) **PBS NewsHour Weekend**
- 5:30 (4:30 MT) **Point Taken**
- 6:00 (5:00 MT) **Focus on Europe**
- 6:30 (5:30 MT) **Global 3000**
- 7:00 (6:00 MT) **Homefront**
- 9:00 (8:00 MT) **America ReFramed *Operation Popcorn***
- 10:30 (9:30 MT) **Memory of Forgotten War**
- 11:00 (10:00 MT) **Homefront**

SUNDAY – MAY 22

SDPB1

- 1:00 (Noon MT) **South Dakota Focus** *Active Generations*
- 2:00 (1:00 MT) **Red Dot on the Ocean: The Matthew Rutherford Story**
- 3:00 (2:00 MT) **When I'm 65**
- 4:00 (3:00 MT) **Rick Steves' Europe *The Netherlands Beyond Amsterdam***
- 4:30 (3:30 MT) **Nature Adventures** *Black Hills Favorite Places*
- 5:00 (4:00 MT) **Antiques Roadshow *Cleveland***
- 6:00 (5:00 MT) **Midsomer Murders**
- 7:00 (6:00 MT) **Call the Midwife**
- 8:00 (7:00 MT) **Masterpiece *Wallander***
- 9:30 (8:30 MT) **Masterpiece *Mr. Selfridge***
- 10:30 (9:30 MT) **Sands of War**
- 11:00 (10:00 MT) **Globe Trekker *Top 10 South American Adventures***
- Midnight (11:00 MT) Washington Week**

SDPB2

- 1:00 (Noon MT) **Point Taken**
- 1:30 (12:30 MT) **Washington Week**
- 2:00 (1:00 MT) **McLaughlin Group**
- 2:30 (1:30 MT) **Great Performances at the Met** *The Pearl Fishers*
- 5:00 (4:00 MT) **PBS NewsHour Weekend**
- 5:30 (4:30 MT) **Memory of Forgotten War**
- 6:00 (5:00 MT) **Filipino American Lives** *Harana: The Search for the Lost Art*
- 7:00 (6:00 MT) **Nature *Jungle Animal Hospital***
- 8:00 (7:00 MT) **Secrets of the Dead *Cleopatra's Lost Tomb***
- 9:00 (8:00 MT) **Global Voices *The Mosuo Sisters***
- 10:00 (9:00 MT) **Mulberry Child**
- 11:00 (10:00 MT) **Nature *Jungle Animal Hospital***
- Midnight (11:00 MT) Secrets of the Dead *Cleopatra's Lost Tomb***

MONDAY – MAY 23

SDPB1

- 6:00 (5:00 MT) **PBS NewsHour**
- 7:00 (6:00 MT) **Antiques Roadshow *Cleveland***
- 8:00 (7:00 MT) **Antiques Roadshow *Baton Rouge***
- 9:00 (8:00 MT) **POV *The Return***
- 10:30 (9:30 MT) **BBC World News**
- 11:00 (10:00 MT) **Charlie Rose**
- Midnight (11:00 MT) Tavis Smiley**

SDPB2

- 6:00 (5:00 MT) **Road to Fame**
- 7:00 (6:00 MT) **Pacific Heartbeat *Road to the Globe***
- 8:00 (7:00 MT) **Local USA *Caring at the End***
- 8:30 (7:30 MT) **On Story**
- 9:00 (8:00 MT) **PBS NewsHour**
- 10:00 (9:00 MT) **Nightly Business Report**
- 10:30 (9:30 MT) **Religion & Ethics Newsweekly**
- 11:00 (10:00 MT) **Road to Fame**
- Midnight (11:00 MT) Pacific Heartbeat *Road to the Globe***

TUESDAY – MAY 24

SDPB1

- 6:00 (5:00 MT) **PBS NewsHour**
- 7:00 (6:00 MT) **Genealogy Roadshow *Miami***
- 8:00 (7:00 MT) **Secrets of the Dead *Teotihuacan's Lost Kings***
- 9:00 (8:00 MT) **Frontline *The Business of Disaster***
- 10:00 (9:00 MT) **Keeping Up Appearances**
- 10:30 (9:30 MT) **BBC World News**
- 11:00 (10:00 MT) **Charlie Rose**
- Midnight (11:00 MT) Point Taken**

SDPB2

- 6:00 (5:00 MT) **Lost Child: Sayon's Journey**
- 7:00 (6:00 MT) **America ReFramed *My Life in China***
- 8:30 (7:30 MT) **Our American Family: The Furutas**
- 9:00 (8:00 MT) **PBS NewsHour**

- 10:00 (9:00 MT) **Nightly Business Report**
- 10:30 (9:30 MT) **Global 3000**
- 11:00 (10:00 MT) **America ReFramed *My Life in China***

WEDNESDAY – MAY 25

SDPB1

- 6:00 (5:00 MT) **PBS NewsHour**
- 7:00 (6:00 MT) **Nature *Meet the Coywolf***
- 8:00 (7:00 MT) **Genius by Stephen Hawking *Why Are We Here?***
- 9:00 (8:00 MT) **Genius by Stephen Hawking *Where Did the Universe Come From?***
- 10:00 (9:00 MT) **Vicious**
- 10:30 (9:30 MT) **BBC World News**
- 11:00 (10:00 MT) **Charlie Rose**
- Midnight (11:00 MT) Tavis Smiley**

SDPB2

- 6:00 (5:00 MT) **This Is My Home Now**
- 6:30 (6:00 MT) **POV *The Return***
- 8:00 (7:00 MT) **Frontline *The Business of Disaster***
- 9:00 (8:00 MT) **PBS NewsHour**
- 10:00 (9:00 MT) **Nightly Business Report**
- 10:30 (9:30 MT) **Focus on Europe**
- 11:00 (10:00 MT) **This is My Home Now**
- 11:30 (10:30 MT) **POV *The Return***

THURSDAY – MAY 26

SDPB1

- 6:00 (5:00 MT) **PBS NewsHour**
- 7:00 (6:00 MT) **On Call** *Incontinence*
- 8:00 (7:00 MT) **South Dakota Focus** *Tourism*
- 9:00 (8:00 MT) **Doc Martin**
- 10:00 (9:00 MT) **Detectorists**
- 10:30 (9:30 MT) **BBC World News**
- 11:00 (10:00 MT) **Charlie Rose**
- Midnight (11:00 MT) Tavis Smiley**

SDPB2

- 6:00 (5:00 MT) **Genius by Stephen Hawking *Why Are We Here?***
- 7:00 (6:00 MT) **Genius by Stephen Hawking *Where Did the Universe Come From?***



Photo: Craig Mellich

Disasters are big business. Follow an investigation with NPR into who profits when disaster strikes. **Frontline *The Business of Disaster*** focuses on Superstorm Sandy: the thousands still not living at home, the agencies that were supposed to help and the companies that made millions.

SDPB1: Tuesday, May 24, 9pm (8 MT)

SDPB2: Wednesday, May 25, 8pm (7 MT)

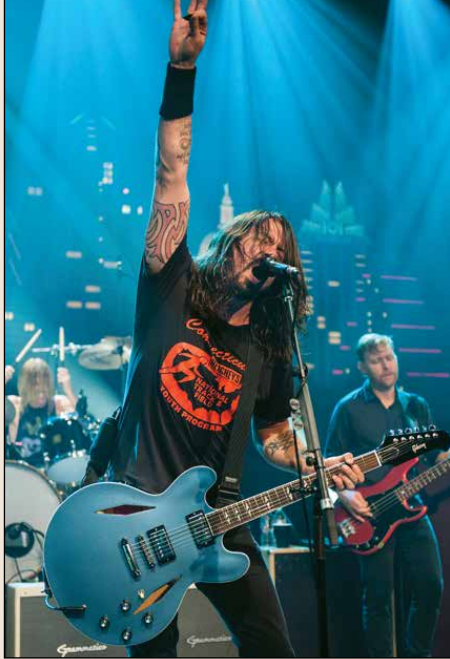


Photo: Scott Newton

Foo Fighters return to **Austin City Limits** to perform songs from their eighth album *Sonic Highways*, which shares the name with the acclaimed HBO series directed by FF founder Dave Grohl.

SDPB1: Saturday, May 21, 11pm (10 MT)

(May 26, continued)

8:00 (7:00 MT) **Time Scanners**
 9:00 (8:00 MT) **PBS NewsHour**
 10:00 (9:00 MT) **Nightly Business Report**
 10:30 (9:30 MT) **Scully/The World Show**
 11:00 (10:00 MT) **Genius by Stephen Hawking**
Why Are We Here?
 Midnight (11:00 MT) **Genius by Stephen Hawking** *Where Did the Universe Come From?*

FRIDAY – MAY 27

SDPB1
 6:00 (5:00 MT) **PBS NewsHour**
 7:00 (6:00 MT) **Washington Week**
 7:30 (6:30 MT) **Charlie Rose—The Week**
 8:00 (7:00 MT) **McLaughlin Group**
 8:30 (7:30 MT) **Market to Market**
 9:00 (8:00 MT) **American Masters**
Highwaymen
 10:00 (9:00 MT) **Night of the Proms**
 10:30 (9:30 MT) **BBC World News**
 11:00 (10:00 MT) **Charlie Rose**
 Midnight (11:00 MT) **Tavis Smiley**

SDPB2

6:00 (5:00 MT) **Mulberry Child**
 7:00 (6:00 MT) **Giap's Last Day at the Ironing Board**
 7:30 (6:30 MT) **POV** *American Revolutionary: The Evolution of Grace Lee Boggs*
 9:00 (8:00 MT) **PBS NewsHour**
 10:00 (9:00 MT) **Nightly Business Report**
 10:30 (9:30 MT) **Asia Insight**
 11:00 (10:00 MT) **Mulberry Child**
 Midnight (11:00 MT) **Giap's Last Day at the Ironing Board**

SATURDAY – MAY 28

SDPB1
 1:00 (Noon MT) **Woodsmith Shop**
 1:30 (12:30 MT) **This Old House Hour**
 2:30 (1:30 MT) **Martha Bakes**
 3:00 (2:00 MT) **America's Test Kitchen**
 3:30 (2:30 MT) **Victory Garden's Edible Feast**

4:00 (3:00 MT) **Garden Smart**
 4:30 (3:30 MT) **America's Heartland**
 5:00 (4:00 MT) **Classic Gospel**
 6:00 (5:00 MT) **Lawrence Welk Show**
 7:00 (6:00 MT) **Doc Martin**
 8:00 (7:00 MT) **S.D. High School All-State Jazz Band** ▼
 10:00 (9:00 MT) **No Cover, No Minimum** ▼
The Record Company
 11:00 (10:00 MT) **Austin City Limits** *James Taylor*
 Midnight (11:00 MT) **Live from the Artists Den**
Marina and the Diamonds

SDPB2

9:00am (8:00am MT) **S.D. High School State Track Meet** ▼
 4:00 (3:00 MT) **To the Contrary**
 4:30 (3:30 MT) **Washington Week**
 5:00 (4:00 MT) **PBS NewsHour Weekend**
 5:30 (4:30 MT) **Point Taken**
 6:00 (5:00 MT) **Focus on Europe**
 6:30 (5:30 MT) **Global 3000**
 7:00 (6:00 MT) **Navy Seals: Their Untold Story**
 9:00 (8:00 MT) **America ReFramed** *My Life in China*
 10:30 (9:30 MT) **Our American Family: The Furutas**
 11:00 (10:00 MT) **Navy Seals: Their Untold Story**

SUNDAY – MAY 29

SDPB1
 1:00 (Noon MT) **South Dakota Focus** ▼
Tourism
 2:00 (1:00 MT) **Escape from Firebase** *Kate*
 3:00 (2:00 MT) **There. And Back.**
 3:30 (2:30 MT) **Wind Beneath Your Wings**
 4:00 (3:00 MT) **Rick Steves' Europe** *Prague*
 4:30 (3:30 MT) **Nature Adventures** ▼ *Pacific Coast of California*
 5:00 (4:00 MT) **Antiques Roadshow** *Cleveland*
 6:00 (5:00 MT) **Midsomer Murders**
 7:00 (6:00 MT) **National Memorial Day Concert**
 8:30 (7:30 MT) **National Memorial Day Concert**
 10:00 (9:00 MT) **Company of Heroes**
 11:00 (10:00 MT) **Globe Trekker** *Tough Trains: Cuba's Sugar Railroad*
 Midnight (11:00 MT) **Washington Week**

SDPB2

1:00 (Noon MT) **Point Taken**
 1:30 (12:30 MT) **Washington Week**
 2:00 (1:00 MT) **McLaughlin Group**
 2:30 (1:30 MT) **Open Mind**
 3:00 (2:00 MT) **Focus on Europe**
 3:30 (2:30 MT) **Global 3000**
 4:00 (3:00 MT) **Temples of Justice** ▼
 5:00 (4:00 MT) **PBS NewsHour Weekend**
 5:30 (4:30 MT) **Our American Family: The Furutas**
 6:00 (5:00 MT) **American Masters** *Highwaymen*
 7:00 (6:00 MT) **Nature** *Meet the Coywolf*
 8:00 (7:00 MT) **Secrets of the Dead**
Teotihuacan's Lost Kings
 9:00 (8:00 MT) **Global Voices** *Rent-a-Family, Inc.*
 10:00 (9:00 MT) **POV** *The World Before Her*
 11:00 (10:00 MT) **Nature** *Meet the Coywolf*
 Midnight (11:00 MT) **Secrets of the Dead**
Teotihuacan's Lost Kings

MONDAY – MAY 30

SDPB1
 6:00 (5:00 MT) **PBS NewsHour**

7:00 (6:00 MT) **Antiques Roadshow** *Baton Rouge*
 8:00 (7:00 MT) **Ted Talks** *War & Peace*
 9:00 (8:00 MT) **POV** *Of Men and War*
 10:30 (9:30 MT) **BBC World News**
 11:00 (10:00 MT) **Charlie Rose**
 Midnight (11:00 MT) **Tavis Smiley**

SDPB2

6:00 (5:00 MT) **Debt of Honor: Disabled Veterans in American History**
 7:00 (6:00 MT) **Jeremiah**
 8:00 (7:00 MT) **Local USA** *PTSD: Bringing the War Home*
 8:30 (7:30 MT) **On Story**
 9:00 (8:00 MT) **PBS NewsHour**
 10:00 (9:00 MT) **Nightly Business Report**
 10:30 (9:30 MT) **Religion & Ethics Newsweekly**
 11:00 (10:00 MT) **Debt of Honor: Disabled Veterans in American History**
 Midnight (11:00 MT) **Jeremiah**

TUESDAY – MAY 31

SDPB1
 6:00 (5:00 MT) **PBS NewsHour**
 7:00 (6:00 MT) **Genealogy Roadshow** *Houston*
 8:00 (7:00 MT) **Secrets of the Dead**
Jamestown's Dark Winter
 9:00 (8:00 MT) **Frontline** *The Fantasy Sports Game*
 10:00 (9:00 MT) **Keeping Up Appearances**
 10:30 (9:30 MT) **BBC World News**
 11:00 (10:00 MT) **Charlie Rose**
 Midnight (11:00 MT) **Point Taken**

SDPB2

6:00 (5:00 MT) **POV** *Web Junkie*
 7:00 (6:00 MT) **America ReFramed** *The Last Season*
 8:30 (7:30 MT) **Giap's Last Day at the Ironing Board**
 9:00 (8:00 MT) **PBS NewsHour**
 10:00 (9:00 MT) **Nightly Business Report**
 10:30 (9:30 MT) **Global 3000**
 11:00 (10:00 MT) **America ReFramed** *The Last Season*



Photo: Sony Music Archives / Photo by Jim McGuire

On American Masters: The Highwaymen—Friends Till the End, discover the story behind the pioneering outlaw country music supergroup that featured Willie Nelson, Kris Kristofferson, Johnny Cash and Waylon Jennings, told through vintage performances and new interviews about life on the road and in the studio.

SDPB1: Friday, May 27, 8pm (7 MT)
 SDPB2: Sunday, May 29, 6pm (5 MT)



Voices of the Northern Plains

A Dramatic Re-visioning of the Core Museum Exhibits

THE CENTER FOR WESTERN STUDIES - The Fantle, Froiland & Elmen Galleries

Tools of the Trade exhibit celebrates the imaginative recreation of the past by such writers as **Frederick Manfred**, whose *Lord Grizzly* tells the story of mountain man **Hugh Glass**, and **Herbert Krause**, author of the farm novels *Wind Without Rain* and *The Thresher*.

See Frederick Manfred's writing table, typewriter, briefcase and buckskin boots and two bronze tributes to Manfred—by artists Storm Townsend and Lee Leunig.

See the **Blood Run Buffalo Effigy** catlinite tablet, exhibits on the **Lewis and Clark Expedition**, Lakota guide **Joseph DeSomet Lewis**, **Crazy Horse**, **Blue Cloud Abbey** collection, and the **Northern Plains Folk Arts Continuum**.

Visit the Herbert Krause Research Library and the Gift Shop (sit in Frederick Manfred's chair).



Upcoming Art Exhibits

- *A View From Here: National Park Service Centennial* (through July 15)
- *Rivers, Wings and Sky: Nancy Losacker's Mosaics and Norma Wilson's Poetry* (through Oct. 22)



AUGUSTANA
UNIVERSITY

THE CENTER FOR WESTERN STUDIES

Free and Open to the Public

M-F (8-5pm) & First Saturdays (10-2pm)

2121 S. Summit Ave., Sioux Falls, SD

Phone: 605-274-4007 Email: cws@augie.edu

www.augie/cws





Michele Slott.



Liz Larkin.

Welcome Michele Slott and Liz Larkin

We extend a warm welcome to two new faces at Friends of SDPB.

Michele Slott is the new West River Director of Corporate Development. Previously, Michele was Senior Brand & Marketing Associate for Prairie Berry, LLC. Originally from De Smet, Michele and her family make their home in Rapid City. Michele spends her non-work time attending her children’s baseball and music activities, baking, reading, and gardening. Her favorite SDPB programs include **Travel with Rick Steves**, **This American Life**, **Radiolab**, and all the cooking shows on SDPB3. Michele says, “I’m excited to be able to re-engage with a larger community of people and help promote both the businesses and programming that make our state a great place to live.”

We also welcome Liz Larkin, new East River Director of Corporate Development. Liz’s background is in business and economic and community development. A native of Watertown, Liz currently resides in Sioux Falls, where she enjoys outdoor activities, reading, and spending time with family. When she’s traveling the eastern side of the state to meet with members of South Dakota’s business community, Liz says she’s partial to **Morning Edition**, **Wait, Wait Don’t Tell Me**, and the **TED Radio Hour**. Liz says she’s excited to be at Friends of SDPB. “I am really looking forward to learning a new industry and working with a great group of people,” says Liz. “It’ll be fun to become more involved in what is happening in South Dakota.”

Welcome, Liz and Michele!

SDPB Governing Board Meeting in May

The SDPB governing boards meet on Friday, May 13, in Brookings at the SDSU Student Union, Lewis & Clark Room #262.

Friends of SDPB, the network’s fundraising and advocacy arm, will meet at 10am. For more information call 1-800-333-0789.

The network’s governing board, the South Dakota Board of Directors for Educational Telecommunications, will meet at 11am. For more information call 1-800-456-0766.

Board meetings are open to the public.

Thank you and Congratulations, Terrie Koehne

Terrie Koehne, Friends of SDPB’s West River Director of Corporate Development, is retiring from SDPB after 24 years. Terrie joined Friends of SDPB in 1992 as West River Underwriting Manager, a position funded by a Bush Foundation grant for its first year, with the goal of bringing more representation to the West River area. “That goal was quickly accomplished as the business community was very supportive and continues to be so,” says Terrie.

“I’ve always been proud to represent Friends of SDPB,” says Terrie. “I’ve enjoyed working with wonderful individuals in the business community throughout western South Dakota to help increase awareness of their brands to the SDPB audience through program sponsorships – which help provide quality programming to all South Dakotans, east and west.”

Plans for post-retirement? “My husband Dex and I plan on slowing down a bit, enjoying life and traveling with our dogs.”

Well deserved, Terrie. Thank you for 24 years of hard work on behalf of SDPB and South Dakota.



Terrie Koehne.

Charles Michael Ray Named SDPB News Director



Charles Michael Ray.

SDPB is pleased to announce Charles Michael Ray has been named SDPB News Director. Ray has been Assignment Editor since December 2015, when former News Director Cara Hetland was promoted to SDPB Radio Director.

Ray began as a Radio Journalist with SDPB at age 19 in 1992. Since then, he has primarily covered western South Dakota on topics of politics, disasters, environment and social issues for SDPB and National Public Radio.

SDPB: Where are you from originally?

Charles Michael Ray: “I was born in Rapid City, SD. I grew up in the Black Hills. I have great-grandparents on both sides who migrated to South Dakota and homesteaded here. I still have so much to learn about this place.”

SDPB: How did you get your start in radio journalism?

CMR: “As a freshman at South Dakota School of Mines & Technology (SDSM&T), I became manager of the KTEQ college radio station. I was hired by SDPB shortly thereafter.”

SDPB: When and in what capacity did you join SDPB?

CMR: “In 1992 I landed the job as a part-time reporter for SDPB while I was squeaking my way through

SDSM&T. [Director of Content] Larry Rohrer hired me. I was just a college kid, 19 years old, more or less an intern. I think I wore rollerblades to that first interview. Reflecting back, I’m glad there was no social media back then to capture that event.”

SDPB: What challenges and opportunities do you see ahead as News Director at SDPB?

CMR: “We have an amazing team of reporters stationed across the state. We are working to build that team and constantly improve our coverage. We aim to add to the dialogue on all things South Dakota and to keep state residents informed.”

SDPB: What makes the work of public radio unique in South Dakota?

CMR: “We are a statewide multiplatform network. We use our resources to keep citizens up to date on everything from the state legislature to the state high school rodeo finals to the Black Hills Pow-Wow. I think there is a marketing slogan that ‘SDPB is South Dakota.’ In the case of news coverage this is true – our reporters and producers live here and care about this place. We are keen on providing coverage that informs and supports citizenship. Democracy requires an informed populace. This is one goal we keep in mind.”

SDPB: How can public radio remain responsive to its audience in the age of multiplatform news reporting and gathering?

CMR: “We’re on Twitter, Facebook, and SDPB.org. Plus we are a statewide radio and TV network and on emerging platforms. We encourage citizens to reach out to us on social media and we also share all of our coverage on social media. If you miss a program on the radio, check us out on Twitter or at listen.SDPB.org.”

SDPB: In your tenure at SDPB thus far, what are some favorite and/or most profound moments or interviews you’ve experienced?

CMR: “There are too many to count. I’ve interviewed Lakota, Dakota, and Nakota elders from

across South Dakota. Many of them have now passed. Their wisdom is deeply humbling and inspirational. As a young reporter I interviewed Governor George Mickelson and helped cover the story of the plane crash and tragic loss to the state. I was in Hill City when federal officials confiscated the T-Rex named Sue and I followed that story for all the years after. The 1997 blizzards in the northern part of South Dakota helped show me the resilience of rural folks – the 2011 floods, and 2013 Storm Atlas did the same. I had a great interview with Jane Goodall when she was in Rapid City, and as a cub reporter I fired a few questions at Carl Sagan during his press conference here. The high profile interviews are fun, but the most awesome and memorable stories are on seemingly average South Dakotans who do absolutely extraordinary things. These are the stories I find most rewarding and inspiring. As SDPB News Director I’ll now do my best to use my experience to support and empower the news team I work with.”

Ray has been awarded 26 regional Edward R. Murrow Awards and was awarded two national Murrow awards, in 2003 and 2008. He received a national Scripps Howard News Service Award for his feature “Surviving on the Stream: A Look at Native American Homelessness in Rapid City, SD.”

Ray has been recognized by the South Dakota Associated Press with over 40 First Place or Honorable Mentions since 1993. He was also a 2006 Finalist for a Livingston Award for Young Journalists for his half-hour documentary examining the impact of climate change on the Missouri River.

From April 2001 to May 2002, Ray took a brief leave-of-absence from SDPB to work as a freelance radio journalist in Prague, Czech Republic, where he filed stories for Free Speech Radio News, Common Ground, Democracy Now, Making Contact, and Independent Native News.

RADIO	WEEKDAYS	SATURDAYS	SUNDAYS
5am / 4 MT	Morning Edition NPR news. Star Date 9am (8 MT)	BBC World Service Overnight.	BBC World Service Overnight.
5:30/4:30 MT		The People's Pharmacy Health news & alternatives.	TED Radio Hour Ideas, inventions and original thinking.
6am / 5 MT		Weekend Edition News and features from NPR.	Weekend Edition News and features from NPR.
6:30/5:30 MT			
7am / 6 MT			
7:30/6:30 MT			
8am / 7 MT			
8:30/7:30 MT	Morning Classics with Owen DeJong ▼ "South Dakota Season Ticket" w/ local performance on Wed. "Request Day" on Fridays.	The Best of Car Talk Real advice, zany hosts.	Krista Tippett on Being Philosophical discussions.
9am / 8 MT		Wait, Wait ... Don't Tell Me! Trivia, humor from week's news.	Travel with Rick Steves America's top travel expert.
9:30/8:30 MT		This American Life Portraits of all kinds of Americans.	America's Test Kitchen Recipes, tips, and information.
10am / 9 MT		Radiolab Science and life.	A Prairie Home Companion Garrison Keillor with music, humor, skits and more.
10:30/9:30 MT			
11am / 10 MT		Here & Now Mondays-Thursdays News, features, conversations and more from NPR.	Ask Me Another Test your wits in this lively quiz show.
11:30/10:30MT	Science Friday on Fridays.	The Dinner Party Download Pop culture, food & conversation.	On the Media News analysis and journalistic journeys.
Noon / 11 MT	Dakota Midday ▼ "Computer Guys" & "Innovation" on Fridays.	All Things Considered NPR	All Things Considered NPR
12:30/11:30MT		A Prairie Home Companion Garrison Keillor with music, humor, skits and more.	Fresh Air Weekend Best features from the week.
1pm/ Noon MT	Marketplace	American Routes Roots music, stories behind sounds/ artists.	Radiolab Science and life.
12:30/1:30 MT			This American Life Portraits of all kinds of Americans.
2pm / 1 MT	Fresh Air with Terry Gross Celeb, newsmaker interviews.	No Cover, No Minimum Radio ▼ South Dakota performance.	The Moth Radio Hour Compelling real-life stories.
2:30/1:30 MT	Jazz Nightly with Karl Gehrke ▼ Karl features jazz artists & styles, as well as South Dakota Jazz Stars.		Big Band Spotlight with Karl Gehrke ▼ Music of '30s & '40s.
3pm / 2 MT			Jazz Nightly Extra ▼ More jazz from SDPB's vast library.
3:30/2:30 MT	PRI's The World Global news.	On Record with Matt Weesner ▼ Adult alternative music.	No Cover, No Minimum Radio ▼ South Dakota performance.
4pm / 3 MT	All Things Considered NPR National Native News 4:30 (3:30 MT)	BBC World Service Overnight.	BBC World Service Overnight.
4:30/3:30 MT			
5pm / 4 MT	World Café Music from around the globe.	BBC World Service Overnight.	BBC World Service Overnight.
5:30/4:30 MT			
6pm / 5 MT	World Café Music from around the globe.	BBC World Service Overnight.	BBC World Service Overnight.
6:30/5:30 MT			
7pm / 6 MT	World Café Music from around the globe.	BBC World Service Overnight.	BBC World Service Overnight.
7:30/6:30 MT			
8pm / 7 MT	World Café Music from around the globe.	BBC World Service Overnight.	BBC World Service Overnight.
8:30/7:30 MT			
9pm / 8 MT	World Café Music from around the globe.	BBC World Service Overnight.	BBC World Service Overnight.
9:30/8:30 MT			
10pm / 9 MT	World Café Music from around the globe.	BBC World Service Overnight.	BBC World Service Overnight.
10:30/9:30 MT			
11pm / 10 MT	World Café Music from around the globe.	BBC World Service Overnight.	BBC World Service Overnight.
11:30/10:30MT			
Mid. / 11 MT	World Café Music from around the globe.	BBC World Service Overnight.	BBC World Service Overnight.
12:30/11:30MT			
1am / Mid. MT	BBC World Service Overnight.	BBC World Service Overnight.	BBC World Service Overnight.

Here & Now: In-depth News and Conversation

Here & Now with hosts Robin Young and Jeremy Hobson brings the news that breaks after **Morning Edition** and before **All Things Considered** on SDPB Radio.

A live production, **Here & Now** reflects the fluid world of news as it's happening, with timely, smart and in-depth news and conversation.

Here & Now has been hosted by Robin Young for more than a decade. A Peabody Award-winning journalist, Young has reported for NBC, CBS and ABC television. In 2013, Young was joined by co-host Jeremy Hobson, most recently host of **Marketplace Morning Report**. Additionally, Meghna Chakrabarti has been named as the program's primary fill-in host. Chakrabarti has won awards from the Associated Press and the Radio Television News Directors Association for her writing, hard news reporting, and use of sound.

Tune in to **Hear & Now** on SDPB Radio, Weekdays, 1-3pm (Noon-2pm MT).



Jeremy Hobson & Robin Young.



Meghna Chakrabarti.



Stephanie Rissler.

South Dakota Focus

On Thursday, May 12 at 8pm (7 MT) **South Dakota Focus** host Stephanie Rissler and guests examine the infrastructure surrounding South Dakota's water safety.

And on Thursday, May 19 at 8pm (7 MT) we catch up with Sioux Falls-based Active Generations, the nonprofit that works with area seniors to promote positive aging through nutrition, exercise, and other lifestyle services and programs.

Thursday May 26 at 8pm (7 MT) we talk with folks involved with tourism in the state to preview the 2016 summer travel season in South Dakota.

Viewers are encouraged to join the live program discussions with comments and questions.

Phone: 877-825-5788

Email: sdfocus@sdpb.org

Facebook: [facebook.com/SDFocus](https://www.facebook.com/SDFocus)

Twitter: @StephanieSDPB

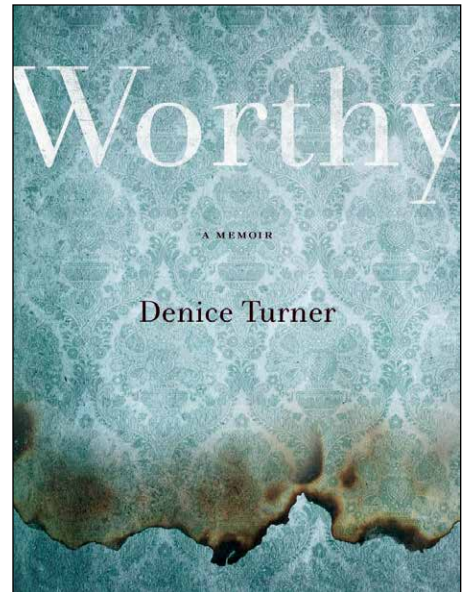
Dakota Midday Book Club

Worthy, the wry, candid memoir by Black Hills State University professor Denice Turner is the next Dakota Midday Book Club.

Published in 2015 by University of Nevada Press, *Worthy* chronicles Turner's reconciliation of her Mormon upbringing and her complicated relationship with her mother, who passed away in a suspicious house fire. Turner also confronts a history that includes a Greek grandfather whose up-from-the-bootstraps legacy refuses to die, the ghosts of two suicidal uncles, and a Mormon shrink who claims to see her dead relatives.

"With the unflinching honesty and powerful emotion of Cheryl Strayed and Jeannette Walls, Denice Turner unwraps her family's legacies to find the story behind her mother's death and her own pain." - Eleanor Brown, author of *The Weird Sisters*.

Join the **Dakota Midday Book Club** and be part of the conversation! You'll receive a book selected by host (and writer/blogger/book fan)



Lori Walsh about every other month. Upcoming book club titles include Jerry Nelson's *Dear County Agent Guy: Calf Pulling, Husband Training, and Other Curious Dispatches from a Midwestern Dairy Farmer* and Jane Smiley's *Some Luck*. Learn more at SDPB.org/BookClub.

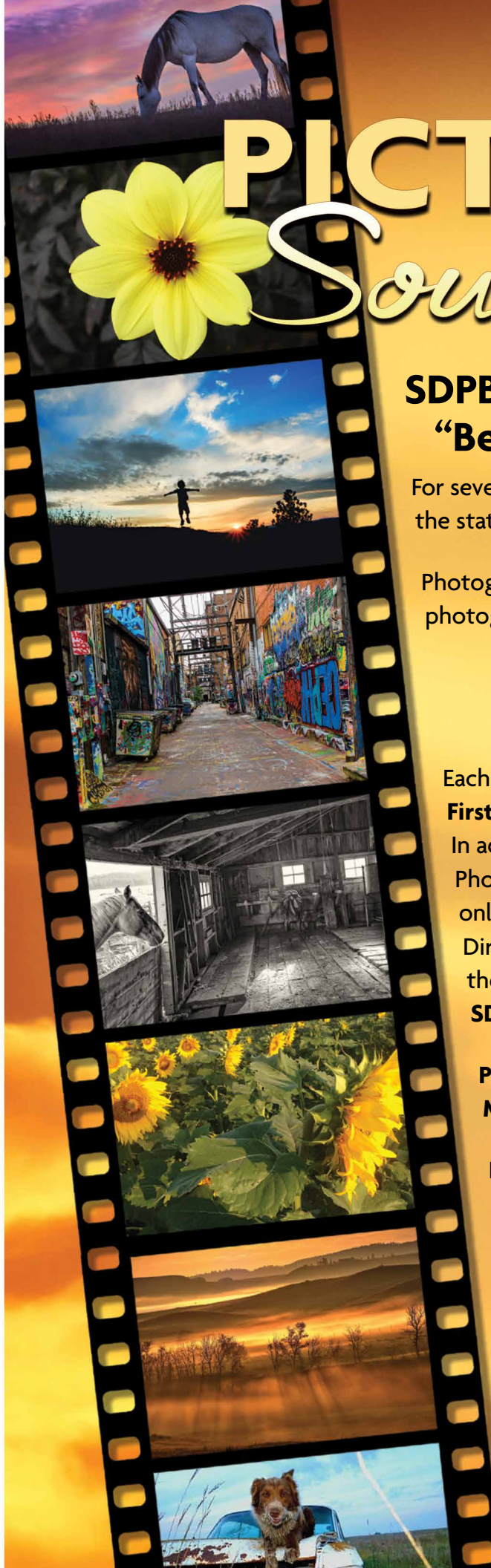
Thank You for your Gifts to Friends of SDPB

Friends of SDPB has received a gift from Daryl & Vonnie Cole, Fort Pierre, in memory of Ann Hasek, Ginny Gunderson, Dick Richardson, & Don Smilloff.

Friends of SDPB has received the following gifts in memory of Earl Nordby, Huron.

- Daniel Allen, Mitchell
- Debra Alexander, Alpena
- Steve Anderson, Yankton
- William Anderson, Huron
- Leif Andol, Huron
- George Bittner, Mitchell
- Mervin Bouchie, Mitchell
- Shelley Buddenhagen, Huron
- Gayle Dice, Mitchell
- Douglas Dutenhoeffler, Huron
- Nancy Ellwein, Mitchell
- Hugh Fullerton, Huron
- Dale Gibson, Huron
- Esther Gilchrist, Hitchcock
- Dick Green, Huron
- Glen Henglefeld, Alexandria

- Barbara Horton, Sioux Falls
- Peggy Kelley, Mitchell
- Doug Kludt, Huron
- Rick Long, Huron
- Peter Mahoney, Petaluma, CA
- Denis Mahowald, Huron
- Doug Molumby, Mitchell
- Marita Montgomery, Huron
- Jackie Morrison, Mitchell
- Loren Noess, Mitchell
- Milo Pietz, Huron
- Wayne & Mary Puetz, Mitchell
- John Scott, Mitchell
- Debbie Smith, Cavour
- James White, Huron
- Lonnie Wiese, Mitchell
- Thomas Young, Mitchell
- Huron Chamber & Visitors Bureau, Huron
- Keller Office, Huron
- Nordby Family Foundation, Huron
- Prostrollo Motor Sales, Huron
- Toast of the Towers Toastmaster, St. Louis Park, MN



PICTURE *South Dakota*

SDPB 2016 PHOTO CONTEST: “Being South Dakotan”

For seven days this spring, SDPB invites photographers around the state to submit photos related to “Being South Dakotan.”

Photographers can enter one of three classes. Each photographer is eligible to enter only one class:

- 1) Student (12th grade and lower)
- 2) Amateur/Hobbyist
- 3) Professional

Each class has 3 primary awards:

First Place - \$250; Second Place - \$150; Third Place - \$100.

In addition, each class includes a “People’s Choice” award.

Photographs chosen as “People’s Choice” will be chosen via online voting and each win \$250. One photo will win “SDPB Director’s Choice” and an award of \$250. Official rules for the contest can be found at SDPB.org/photocontest.

Photographs must be taken in South Dakota between May 24 and May 31, 2016.

Entries must be submitted using the upload form on the SDPB “Picture South Dakota” contest page at SDPB.org/photocontest. Deadline for submissions is midnight (Central Time) on Sunday, June 5, 2016. Participants under 18 must have the consent of a parent or guardian.

Winners will be announced June 30 and will be published in the *2017 Picture South Dakota Calendar*, produced by SDPB.

Corporate Support *Our corporate partners continue to support the excellent Television and Radio programming you have come to expect and love from SDPB.*

Aberdeen Parks, Recreation & Forestry Department	Dacotah Prairie Museum—Granary Rural Cultural Center	Horton Incorporated	Rapid City Arts Council	South Dakota State University
Abourezk Law Firm	Dakota Plains New Holland	Howes Oil	Regional Health	South Dakota State University
Acupuncture 4 Health	Dakota State University	Hy-Vee Food Stores	Reptile Gardens	Continuing & Distance Education
All Souls Church	Daktronics	IFAM Capital	Rocklands Entertainment	South Dakota State University
ArtForms Gallery	Davenport Evans Lawyers	Independent Insurance Agents of SD	Sanford Health	Foundation – Woodbine Productions
Arts Rapid City	Deadwood History (Adams Museum & House/Days of '76/Adams Research & Cultural Center)	Ingalls Homestead	SDN Communications	South Dakota Symphony
Associated General Contractors of South Dakota	Delta Dental of South Dakota	Inside Out	Sioux Falls Area Community Foundation	South Dakotans for the Arts
Avera Health	DeMersseman, Jensen, Tellinghuisen & Huffman, LLP	Interim HealthCare	Sioux Falls Seminary	Southeastern Dental Center – Dr. Daniel Goede
BankWest	East River Electric Power Cooperative	Jim Szana Trio	Siouxland Museums	Spearfish GMC Cadillac
Bethesda	Emmanuel Episcopal Church	Jolly Lane Greenhouse	South Dakota Affiliate of the American College of Nurse Midwives	Sunset Pawn, Inc.
Black Hills Area Community Foundation	Exceptional Artists	(The) Journey Museum	South Dakota Agricultural Heritage Museum	Touchstone Energy
Black Hills Blues Society	Family Dentistry of Sioux Falls	Keller Williams Realty – Jeff Nelson	South Dakota Art Museum	Turbak Law Office, PC
Black Hills Federal Credit Union	Farmers Union Insurance Companies	Koch Hazard Architects	South Dakota Arts Council	University of Sioux Falls
Black Hills Film Festival	First Bank and Trust	Landscape Garden Centers	South Dakota Bar Foundation	University of South Dakota
Black Hills Playhouse	First Dakota National Bank	Mr. James Leach, Attorney at Law	South Dakota Community Foundation	Vance Thompson Vision
Black Hills State University	Fischer, Rounds & Associates	LIW Pageant Society	South Dakota Corn	Viken & Riggins Law Firm
Black Hills Symphony	Friends of Aberdeen University/ Civic Symphony	Madison Farmers Elevator	South Dakota Crop Improvement Association	Warne Chemical & Equipment Company
Black Hills Unitarian Universalist Fellowship	Freedom Forum	Mahlander's	South Dakota Film Festival	Washington Pavilion
Bursch Travel	Flooring America	Main Street Market	South Dakota Humanities Council	Weigum's Great Plains Landscape Arboretum
Bush Foundation	Four Seasons Fabric	McCrorry Gardens	South Dakota Space Grant Consortium	West River Dermatology Clinic – Dr. Roger Knutsen & Dr. Siri Knutsen Larson
Capital Services	Gene Hufford Agency, Inc.	Media One Advertising	South Dakota Speech-Language-Hearing Association	Westhills Village Retirement Community
Catholic United Financial	Great Plains Zoo & Delbridge Museum	Missouri River Energy Services	South Dakota State Fair	Wilson, Olson & Nash, PC - Attorneys at Law
(The) Center for Western Studies	Chet Groseclose, Prof. LLC	National Music Museum	South Dakota State Historical Society	Xanterra
Children's Museum of South Dakota	Hill City Arts Council	North County Fiber Fair	South Dakota State Quilt Guild	
CO-OP Architecture	Home Federal Bank	Northern State University		
Credit Union Association of the Dakotas	Presentation Sisters of Aberdeen	NorthWestern Energy		
Dacotah Bank	Puetz Corporation	Ophthalmology Associates		
	PULL LLC	Ophthalmology LTD		
		Pathway Investment		
		Prairie Repertory Theatre		
		Quilters Headquarters		

**Join us in telling South Dakota's stories.
Be an underwriter.**

Contact the Corporate Development Manager nearest you.

Michele Slott, West River
800-456-1266

Liz Larkin, East River
800-456-0556



Volume 47 No. 5

Friends of SDPB Office

PO Box 5000
Brookings, SD 57006
(605) 688-4191 or (800) 333-0789
Ryan Howlett, Friends CEO
(800) 456-0556

SDPB Administrative Office

PO Box 5000
Vermillion, SD 57069
(605) 677-5861 or (800) 456-0766

SDPB Home Page

<http://www.SDPB.org>
press@SDPB.org

SDPB Magazine & Promotion Staff

Katy Beem, Editor
Matti Smith, Marketing Manager
Amber Anders, Continuity Director
Dave Foote, Promotion Producer
Michael Zimny, Social Media
Arianne Wunder, Marketing Intern

Friends of SDPB Board

President Daniel Leikvold, Lead
Vice President Janelle Krause Toman, Pierre
Tom Manzer, Treasurer, Brookings
Greg Blomberg, Secretary, Sioux Falls
Wayne Carney, Fort Pierre
Malcom "Chap" Chapman, Rapid City
Scott German, Peever
Thomas E. Graslie, Rapid City
Marcia Hendrickson, Chancellor
Rebecca Jirava, Brookings
Lizabeth Manning, Spearfish
Katrina Lehr-McKinney, Sioux Falls
Waneen Polly, Watertown
Prof. Tim Schorn, Vermillion
John Charles Sternquist, Yankton
Cheryl Eagan Taylor, Sioux Falls
South Dakota Educational Telecommunications Board
Mark Shlanta, Chair, Sioux Falls
Doyle Estes, Hill City
Kay Jorgensen, Spearfish
Rick Knobe, Sioux Falls
Julie Mathiesen, Sturgis
Gerry Schlenker, Canistota
Michael G. Rush, Regents, Pierre
Julie Overgaard, SDPB, Vermillion
David Zolnowsky, BIT, Pierre

SDPB Management Team

Julie Overgaard, Executive Director
Larry Rohrer, Director of Content
SeVern Ashes, Engineering Director
Bob Bosse, Television Director
Cara Hetland, Radio Director
Fritz Miller, Marketing Director
Kent Osborne, Online Director

– South Dakota Public Broadcasting is a division of the South Dakota Bureau of Information and Telecommunications.

– Friends of SDPB is a 501(c)3 organization.
– SDPB Magazine is printed by Midstates Printing, Aberdeen, SD. Approximately 14,500 copies of the document were printed at an approximate cost of \$.36 per copy. SDPB Magazine (ISSN 1529-1596) is published and mailed monthly for \$10 per year for Friends of SDPB, 815 Medary, Brookings, SD 57006. Periodical postage paid at Brookings, SD, and additional mailing offices.

Postmaster: Send address changes to Friends of SDPB, Box 5000, Brookings, SD 57006. USPS 0764-400





Black Hills All Stars Concert

Featuring Jami Lynn, Paul Larson & Gordy Pratt with Kenny Putnam • A Benefit for the Black Hills Playhouse

Friday, June 3 • 7:30 pm

Saturday, June 4 • 2:00 pm & 7:30 pm

Tickets: \$20 in advance, \$25 day of show

Four outstanding musicians are coming together to produce a high-energy variety show! Come out for a great performance with some of the best in our region and support the artistic and educational programs of the Black Hills Playhouse!



JAMI LYNN

Fast becoming one of the most popular folk and Americana singer/songwriters in the country .



PAUL LARSON

If a cowboy's heart and soul has a voice, it belongs to Paul Larson.



GORDY PRATT

A veteran entertainer, extraordinary guitarist, comedy writer, and published songwriter, Gordy has appeared on ABC's Good Morning America, opened for Kenny Chesney, the Nitty Gritty Dirt Band, The Beach Boys, and many more.



KENNY PUTNAM

Kenny Putnam, two-time South Dakota Fiddle Champ, toured The Red Willow Band and played for eight years with country legend Roy Clark, appearing on Hee Haw and stages from The Grand Ol' Opry to Moscow, Russia.

Sponsored by



SEASON WARMERS

JUNE 3 & 4
Black Hills All-Stars

JUNE 5
Tatanka Teaser



Jeeves Intervenes

Comedy • June 10-19



Nunsense

Musical Comedy • June 24-July 17



Pageant

Musical Comedy • June 25-July 15



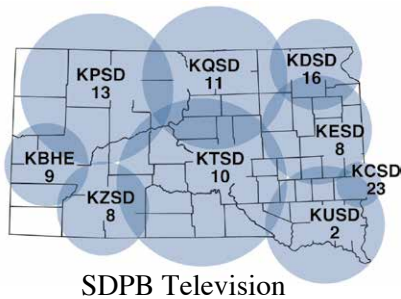
The Addams Family

New Musical • July 22-August 7

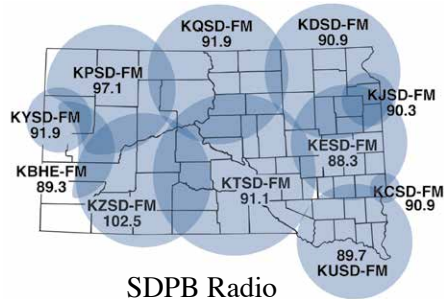


Shipwrecked! An Entertainment

Comedy • August 12-21



SDPB Television



SDPB Radio

Live and on-demand audio and video at SDPB.org



The number on the top of your address is your membership expiration date. The number on the left is your identification. Please use for membership renewals. This will reduce our processing time and speed up your service.

Printed on Recycled Paper

The NATIONAL MEMORIAL DAY CONCERT

SDPB1: Sunday, May 29, 7pm (6 MT) and repeats at 8:30pm (7:30 MT)

Join co-hosts Gary Sinise and Joe Mantegna for a night of remembrance honoring the service and sacrifice of our men and women in uniform, their families at home and all those who have given their lives for our country.

