

PORTMAN & WRIGHT'S

The Little Prince

January 20-28
JANET QUINNEY LAWSON CAPITOL THEATRE

REDISCOVER THE SIMPLE CHARM OF CHILDHOOD WONDER AS ANTOINE DE SAINT-EXUPÉRY'S FANCIFUL STORYBOOK IS TRANSFORMED INTO A MAGICAL OPERA—PERFECT FOR THE WHOLE FAMILY!

UTAHOPERA.ORG
801-533-NOTE (6683)

Season Sponsor
GEORGE S. AND DOLORES DORÉ ECCLES
 FOUNDATION

UTAH PERA



Manager's Memo



James Davie
 Station Manager PBS Utah

When PBS Utah signed on the air under the call letters KUED on January 9, 1958, there was really only one way to receive our service — over the air using an antenna. Things have certainly changed in the last 66 years, with the advent of cable, satellite, and of course streaming. Being committed to serving our entire viewing area, no matter where or how someone may choose to watch, PBS Utah has worked hard to ensure that our channel is available on as many of these platforms as possible.

Our network of three transmitters and nearly 100 translators throughout the state keeps our over the air signal available for free to viewers who use an antenna. And we're still available on most of the cable and satellite tv services that serve Utah. You may be less familiar with some of the ways that we are making our entire main channel and the PBS KIDS 24/7 channel available to those who prefer to get their television delivered via the internet.

On a computer or mobile device, you can stream us on our website, pbsutah.org. Just click on the LIVE TV button in the upper right portion of the screen. Our channel is also available to stream using the PBS App for mobile, tablet, smart TVs, Roku, Amazon Fire

TV, Chromecast, and Apple TV. Again, just look for the LIVE TV button.

If you already use a livestreaming service, we are now also available on the following: YouTube TV, Hulu + Live TV, DirecTV Stream, and Local Now.

So, whether a viewer lives in an area where reception can be difficult, can't afford a traditional or digital subscription service, or doesn't have broadband internet, there should still be an option that allows them access to PBS Utah's world-class dramas, vital news and information programs, and educational and entertaining kids' shows.

As you'll see in this guide, January offers too many great shows to miss out on!



We provide the following four channels



PBS Utah
 Channel 7.1 • SD Comcast 7 • HD Comcast 658

FROM THE
 UNIVERSITY
 OF UTAH



Channel 7.2 • Comcast 390



Channel 7.3 • Comcast 391



Channel 7.4 • Comcast 393



Stay Connected at pbsutah.org



pbsutah
 pbskidsutah



@pbsutah



@pbsutah



pbsutah



**NOVA:
When Whales Could Walk**

Wed., Jan. 31, 8PM

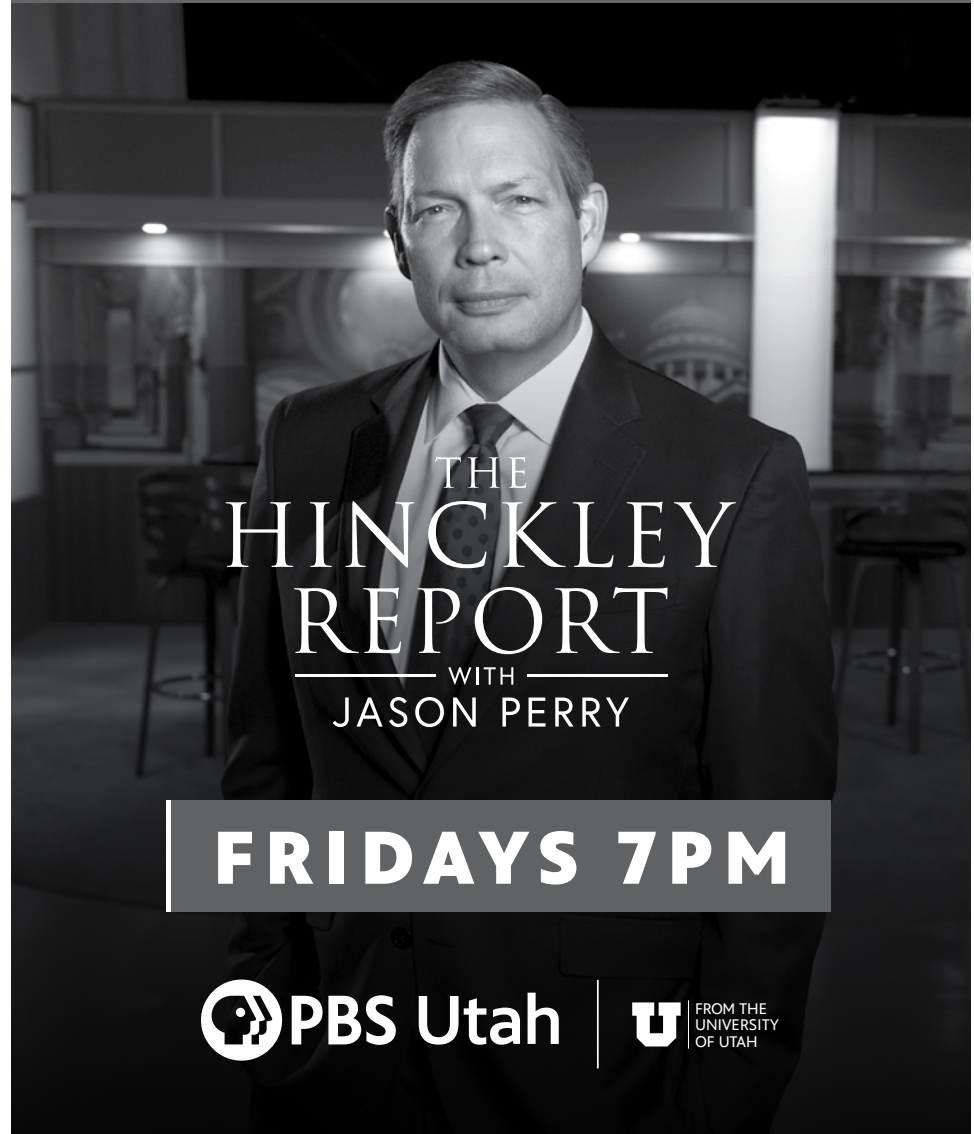
A spectacular fossil graveyard reveals a 43-million-year-old whale that had four legs and could walk. Follow scientists as they search for new clues to how mammals moved from land into the sea to become the largest animals on Earth.

- 10:00 As Time Goes By: The House Next Door** Lionel, Jean, Judy, and Sandy are concerned when they hear noises from the empty house next door.
- 10:30 Rick Steves' Europe: Swiss Alps**
- 11:00 Independent Lens: Razing Liberty Square** Liberty City, Miami, is home to one of the oldest segregated public housing projects in the U.S. Now with rising sea levels, the neighborhood's higher ground has become something else: real estate gold.
- 12:30 A ^{PBS Utah} Roots, Race & Culture: Distrust In Healthcare**

Wed. 31

- 5:30 BBC News America**
- 6:00 PBS NewsHour**
- 7:00 Nature: Gorilla** This documentary presents an intimate look at a silverback and his family and features a newborn baby gorilla, brave researchers, forest elephants, buffalos, and the last remaining wild coastline in the African tropics.
- 8:00 NOVA: When Whales Could Walk** A spectacular fossil graveyard reveals a 43-million-year-old whale that had four legs and could walk.
- 9:00 Secrets of the Dead: Jamestown's Dark Winter** Follow forensic anthropologists as they excavate the early American colony and uncover dark secrets. What do the newly discovered bones of a 14-year-old English girl reveal about what happened during the winter of 1609?
- 10:00 As Time Goes By: A Surprise for Jean** Jean feels her life is mundane and uneventful and wants Lionel to come up with a suitable surprise to pep things up.
- 10:30 Rick Steves' Europe: French Alps and Lyon**
- 11:00 Funny Woman (4 of 6)**

**TURN TO THE HINCKLEY REPORT
FOR IN-DEPTH ANALYSIS
OF THE 2024 UTAH LEGISLATIVE SESSION**



THE
**HINCKLEY
REPORT**
WITH
JASON PERRY

FRIDAYS 7PM

PBS Utah | FROM THE UNIVERSITY OF UTAH

WATCH LIVE. STREAM ANYTIME.

@PBSUtah | **DOWNLOAD THE FREE PBS APP** | **ALSO AVAILABLE AS A PODCAST**

PBS Utah MemberCard

\$90 annual gift / **\$7.50** monthly or more
2-for-1 and other discounts at restaurants
and venues statewide

For more information or to become a Sustaining Member,
contact PBS Utah Membership at 801-581-3284

MEMBERCARD BENEFIT FOR **JANUARY**



20% OFF

1 OR 2 HOUR PACKAGE

Valid at Salt Lake or Ogden Locations.
Use "MCARD" when booking online.

Valid for one-time only. Call for more information, not valid with any other offers.

MUST PRESENT PLASTIC MEMBERCARD TO REDEEM OFFER.

BOOK CLUB IN A BOX



Immigration, religion, belonging, and the merging of all three, shape the identity of so many Utahans who came to the state to find a home away from their native lands. Both Willy Palomo's book *Wake the Others* and three documentary films produced by local high school filmmakers explore the what happens at the intersection of immigration, religion, and belonging and how this has shaped them, their families, and their identities.

Register for your box today!
pbsutah.org/bookclub



"Timely, thoughtful, and hilarious."
- *BroadwayWorld*

NATIVE GARDENS

by Karen Zacarías

A contemporary comedy that reminds us:
we can't always choose our neighbors.

Sponsored by the
EMMA ECCLES JONES
FOUNDATION

January 12-27
PioneerTheatre.org
801-581-6961

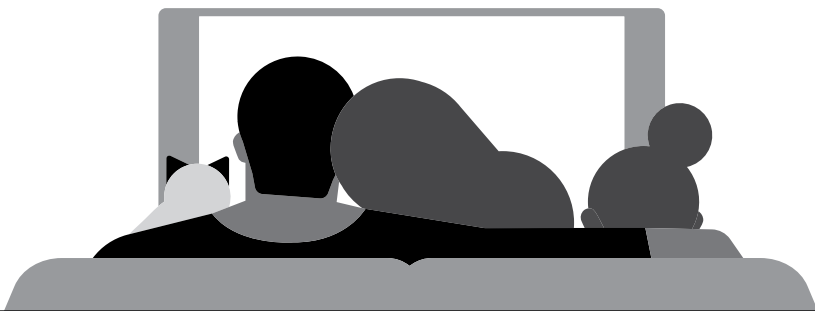
"Native Gardens" is presented in arrangement with Concord Theatricals on behalf of Samuel French, Inc

PBS Utah is dedicated to bringing you the best local and national programming that informs, enlightens, and entertains.

Our work is made possible in part by local businesses and sponsors that financially support the station.
Please join us in thanking our 2023 Public Partners.

AARP of Utah
Best Friends Animal Sanctuary
Challenger Schools
Dairy West
Discovery Gateway Children's Museum
Loveland Living Planet Aquarium
Middle Hill Speech and Voice Clinic
My529
The Clark Planetarium

To learn more about becoming a public partner, please reach out to Jennifer Van Grevenhof at j.vangrevenhof@pbsutah.org.



SPONSORS

The following businesses and organizations help support the programs you enjoy. To show your appreciation, please call, write, or thank in person the company that sponsors your favorite program.

Foundation Sponsors

Alan and Jeanne Hall Foundation
American Documentary / POV
American Public Television
B.W. Bastian Foundation
Bamberger-Allen Health and Education Foundation
Beesley Family Foundation
C. Scott & Dorothy E. Watkins Foundation
Cleone Peterson Eccles Foundation Fund
Cultural Vision Fund
Cumming Foundation
Florence J. Gillmor Foundation
Lawrence T. & Janet T. Dee Foundation
Marie Eccles Caine Foundation-Russell Family
The Memton Fund
Public Broadcasting Service
R. Harold Burton Foundation
Rocky Mountain Power Foundation
Sidney Stern Memorial Trust
Snow Christensen & Martineau Foundation
Sorenson Legacy Foundation
Stephen G. and Susan E. Denkers Family Foundation
Stewart Education Foundation
WETA
Willard L. Eccles Foundation
WWCI

Business Sponsors

A Place For Mom
AARP
Alpine Art and Frame
Ballet West
Best Friends Animal Society
Bruce and Lynn Chone
Challenger Schools
Children's Hour Bookstore
Clark Planetarium
Discovery Gateway Children's Museum
Egyptian Theatre
Grand Canyon University
Harmons Grocery
Huetter Mill And Cabinet
Ken Sanders Rare Books
KUER 90.1
Loveland Living Planet Aquarium
McDonough Orthodontics
Middle Hill Speech and Voice Clinic
Moab Springs Ranch
My529 College Savings Plan
Natural History Museum
Nate Wade Subaru
Norman and Barbara Tanner
O.C. Tanner Jewelers
Pioneer Theatre Company
Red Butte Garden
Salt Lake Acting Company
Salt Lake Film Society
Southern Utah Museum of Art
The Nature Conservancy
Tracy Aviary
UFirst Credit Union
University of Utah Continuing Education
University of Utah Health Care/Sciences
University of Utah Health Plans
Utah Museum of Fine Arts
Utah Symphony/Utah Opera



PBS Utah Passport

PUBLIC TELEVISION'S ONLINE VIDEO LIBRARY FOR MEMBERS

\$60 ANNUAL GIFT
\$5 MONTHLY OR MORE

Passport features both select PBS and PBS Utah programs that allow station donors and supporters to watch even more episodes of their favorite shows. **Find out more at pbsutah.org/passport.**

To exclude your name from any PBS Utah membership mailing list exchange with non-affiliated third party organizations, please contact the Member Hotline at 801-581-3284, toll-free at 1-800-477-5833, or email at membership@pbsutah.org.

PBS UTAH ADVISORY BOARD

Executive Committee Members: *Chair*, Diana Suddreth; *Vice-Chair*, Jennifer Tarazon; *Members:* Maria O'Mara, James Davie, Ja'Naye Payne.

Board Members: Justin Beene, Rainer Dahl, Kent DiFiore, Eeye Hsu, Dave Jones, Pamela Juliano, Al Landon, Stephenie Larsen, Nancy Lyon, Andrew Nelson, Hoang Nguyen, Bill Oakley, Darren Parry, Nikki Walker, Edgar Zuniga.

Appointed Members: James Davie, Maria O'Mara, Laura Snow.

Legacy Members: Jess Agraz, Sheryl Allen, Bruce Cohne, Clark Giles, Karen Hale, Ron Henriksen.

THE UNIVERSITY OF UTAH BOARD OF TRUSTEES

Christian Gardner, *Chair*; Katie Eccles, *Vice-Chair*; Spencer Eccles, *Treasurer*; Maria J. Garcia, *David Parkin*, J. Steven Price, *Bassam T. Salem*, Glenn Seninger, *Randy Shumway*, Jim Sorenson, *Taylor VanderToolen*.

PBS UTAH ADMINISTRATION

Taylor R. Randall, *President*; Laura Snow, *Senior Advisor*; Maria O'Mara, *Executive Director, PBS Utah and KUER*; James Davie, *Station Manager*; Ken Dodson, *Controller*; Laura Durham, *Director of Programming and Community Engagement*; Lisa Olken, *Director of Content*; Johanna Barrett, *Director of Marketing*; Ja'Naye Payne, *Director of Development*; Jon Hartog, *Director of Membership*; Bill Ramsay, *Director of Engineering*.

SEVEN STAFF

Danielle Bastian and Johanna Barrett, *writing & editing*; Alexis Rausch and Amanda Anderson, *design & production*.

ADVISORY BOARD MEETINGS

Advisory board meetings are held every other month. For the schedule of full board meetings, go to pbsutah.org/about/pbsutah-advisory-board.

PROGRAM INFORMATION

For programming inquiries, general questions about PBS Utah, questions about Passport, or to report reception problems, contact PBS Utah Viewer Services at 801-581-3064. Visit our website at pbsutah.org.

COMMUNITY ENGAGEMENT

To learn more about community resources and events, call Laura Durham: 801-585-3523. Email ldurham@pbsutah.org.

PBS UTAH INSIDERS

To become a Patron, Directors Circle, Broadcasters Club, or Legacy Circle member, contact Ja'Naye Payne at 801-581-3227 or jpayne@pbsutah.org.

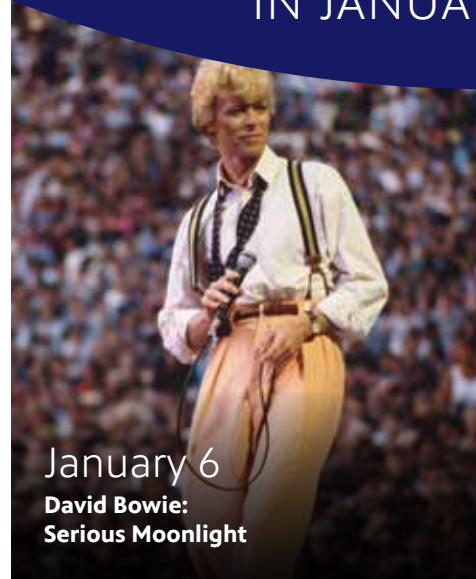
SEVEN

The official program guide for PBS Utah, a nonprofit public television station, ©PBS Utah 2023, all rights reserved. SEVEN is delivered monthly to all members of PBS Utah. Membership is just \$5 monthly as an ongoing sustaining member, or \$60 per year, which qualifies you for PBS Utah Passport. Basic membership is \$36 per year. To join, go online at pbsutah.org/pledge or call 801-581-3284.

To receive SEVEN online, call 801-581-3284 or email membership@pbsutah.org.

SATURDAY NIGHT CONCERT SERIES

JOIN US EVERY SATURDAY
IN JANUARY AT 10PM



January 6

David Bowie:
Serious Moonlight



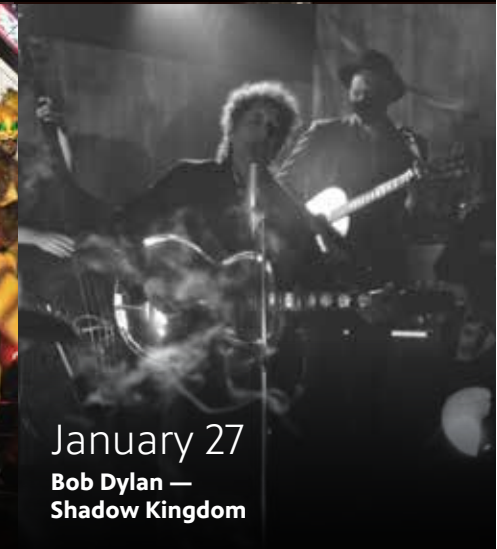
January 13

Johnny Cash:
Man in Black — Live in Denmark 1971



January 20

Katy Perry:
The Prismatic World Tour



January 27

Bob Dylan —
Shadow Kingdom



Also available for streaming on Passport.
pbsutah.org/passport

