



LITTON'S WEEKEND ADVENTURE

COMMERCIAL LOAD AND WEB SITE REPORT

3rd QUARTER 2016

FOLLOWING IS A LIST OF ALL LITTON'S WEEKEND ADVENTURE PROGRAMS PROVIDED TO ABC AFFILIATES DESIGNED TO MEET THE EDUCATIONAL/INFORMATIONAL REQUIRMENT FOR CHILDREN THIRTEEN TO SIXTEEN YEARS OLD DURING THE THIRD QUARTER OF 2016. BECAUSE THESE PROGRAMS ARE ORIGINALLY PRODUCED FOR AND DIRECTED AT CHILDREN THIRTEEN TO SIXTEEN YEARS OLD, NEITHER THE COMMERCIAL LIMITS NOR THE WEBSITE RULE APPLY (SEE 47 C.F.R. § 73.670 (Note 2)). THIS CERTIFIES THAT ALL OF THESE PROGRAMS WERE FORMATTED (IN THE ORDER AND AT THE TIMES INDICATED) WITH THE FOLLOWING COMMERCIAL LOADS.

Children's Weekend Programs (series)

1. Program: Jack Hanna's Wild Countdown
Duration: Half-hour
Number of Network Commercial Minutes: 8:00

2. Program: Ocean Mysteries
Duration: Half-hour
Number of Network Commercial Minutes: 8:00

3. Program: Sea Rescue
Duration: Half-hour
Number of Network Commercial Minutes: 8:00

4. Program: The Wildlife Docs
Duration: Half-hour
Number of Network Commercial Minutes: 8:00

5. Program: Rock the Park
Duration: Half-hour
Number of Network Commercial Minutes: 8:00

6. Program: Born to Explore
Duration: Half-hour
Number of Network Commercial Minutes: 8:00

Children's Weekend Specials

None

Children's Weekday Programs

None

Children's Weekday Specials

None

* * * * *

ALTHOUGH THESE PROGRAMS ARE NOT SUBJECT TO THE WEBSITE RULE BECAUSE THEY ARE PRODUCED FOR AND AIMED AT CHILDREN 13-16, NONETHELESS LITTON HAS ENDEAVORED TO COMPLY WITH THE RESTRICTION ON URLS DISPLAYED WITHIN SHOWS (SEE SECTIONS 73.670(b), (c) AND (d) OF THE RULES OF THE FEDERAL COMMUNICATIONS COMMISSION, 47 C.F.R. § 73.670(b), (c) AND (d)).

NONE OF THESE PROGRAMS CONTAINED ANY URLS, WITH THE POSSIBLE EXCEPTION OF (a) FICTIONAL URLS IN PROGRAMMING, (b) URLS OF COMMERCIAL-FREE WEBSITES THAT SATISFY 47 C.F.R. § 73.670(b), OR (c) URLS, NOT UNDER THE CONTROL OF THE LICENSEE, OF NON-PROFIT OR GOVERNMENT ENTITIES WITHIN PUBLIC SERVICE ANNOUNCEMENTS AIRED ON BEHALF OF THOSE ENTITIES, OR MEDIA COMPANIES IN PARTNERSHIP WITH THOSE ENTITIES.

Litton Entertainment
9/27/16

ME-TV NETWORK COMMERCIAL LIMITS
AND WEB SITE RULE COMPLIANCE CERTIFICATION,

THIRD QUARTER 2016

FOLLOWING IS A LIST OF ALL ME-TV NETWORK PROGRAMS DESIGNED FOR CHILDREN TWELVE YEARS OLD AND YOUNGER THAT WERE SCHEDULED FOR BROADCAST DURING THE THIRD QUARTER OF 2016, JULY 1, 2016 THROUGH SEPTEMBER 30, 2016. THIS CERTIFIES THAT ALL OF THESE PROGRAMS WERE FORMATTED (IN THE ORDER AND AT THE TIMES INDICATED) TO ALLOW FOR NO MORE THAN 10.5 MINUTES OF TOTAL COMMERCIAL TIME PER CLOCK HOUR ON WEEKENDS AND 12 MINUTES OF TOTAL COMMERCIAL TIME PER CLOCK HOUR ON WEEKDAYS, OR HALF THAT ALLOTTED TIME FOR AN ISOLATED HALF HOUR OF CHILDREN'S PROGRAMMING. THE ACTUAL NUMBER OF NETWORK COMMERCIAL MINUTES WAS INCLUDED IN THE NETWORK TRAFFIC REPORTS FOR THE THIRD QUARTER OF 2016, WHICH EACH AFFILIATED STATION HAS RECEIVED HERETOFORE.

Children's Programs (series)

1. Program: H.R. Pufnstuf
Times: Saturdays 7:00- 7:30 AM ET
Duration: 30 minutes
Rating: TV-G

2. Program: Land of the Lost
Times: Saturdays 7:30- 8:00 AM ET
Duration: 30 minutes
Rating: TV-G

3. Program: Green Screen Adventures
Times: Saturdays 8:00- 9:00 AM ET {Two (2) individual half-hour episodes}
Duration: 30 minutes
Rating: TV-Y7 E/I

* * * * *

ALL ME-TV NETWORK PROGRAMS DESIGNED FOR CHILDREN TWELVE YEARS OLD AND YOUNGER, SCHEDULED FOR BROADCAST DURING THE THIRD QUARTER OF 2016, COMPLIED WITH SECTIONS 73.670(b), (c) AND (d) OF THE RULES OF THE FEDERAL COMMUNICATIONS COMMISSION, 47 C.F.R. § 73.670(b), (c) AND (d).

NONE OF THESE PROGRAMS, AND NO PROMOTIONAL OR PUBLIC SERVICE ANNOUNCEMENTS SCHEDULED BY ME-TV NETWORK WITHIN OR ADJACENT TO THOSE PROGRAMS, CONTAINED ANY URLs, WITH THE POSSIBLE EXCEPTION OF (a) FICTIONAL URLs IN PROGRAMMING, (b) URLs OF COMMERCIAL-FREE WEBSITES THAT SATISFY 47 C.F.R. § 73.670(b), OR (c) URLs, NOT UNDER THE CONTROL OF THE LICENSEE, OF NON-PROFIT OR GOVERNMENT ENTITIES, WITHIN PUBLIC SERVICE ANNOUNCEMENTS AIRED ON BEHALF OF THOSE ENTITIES, OR MEDIA COMPANIES IN PARTNERSHIP WITH THOSE ENTITIES.

FOLLOWING IS A LIST OF ALL ME-TV NETWORK PROGRAMS DESIGNED TO MEET THE EDUCATIONAL/INFORMATIONAL REQUIREMENT FOR CHILDREN THIRTEEN TO SIXTEEN YEARS OLD DURING THE THIRD QUARTER OF 2016, JULY 1, 2016 THROUGH SEPTEMBER 30, 2016. BECAUSE THESE PROGRAMS ARE ORIGINALLY PRODUCED FOR AND DIRECTED AT CHILDREN THIRTEEN TO SIXTEEN YEARS OLD, NEITHER THE COMMERCIAL LIMITS NOR THE WEBSITE RULE APPLY (SEE 47 C.F.R. § 73.670 (Note 2)). THIS CERTIFIES THAT ALL OF THESE PROGRAMS WERE FORMATTED (IN THE ORDER AND AT THE TIMES INDICATED) WITH THE FOLLOWING COMMERCIAL LOADS.

Children's Programs (series)

1. Program: Travel Thru History
Times: Saturdays 9:00- 10:00 AM ET {Two (2) individual half-hour episodes}
Duration: 30 minutes
Rating: TV-G E/I
Number of Network Commercial Minutes: 5:00 or less per half-hour episode

2. Program: Mystery Hunters
Times: Saturdays 10:00- 11:00 AM ET {Two (2) individual half-hour episodes}
Duration: 30 minutes
Rating: TV-G E/I
Number of Network Commercial Minutes: 5:00 or less per half-hour episode

3. Program: Saved by the Bell
Times: Sundays 10:00 AM- 12:00 PM ET {Four (4) individual half-hour episodes}
Duration: 30 minutes
Rating: TV-G E/I
Number of Network Commercial Minutes: 7:00 or less per half-hour episode

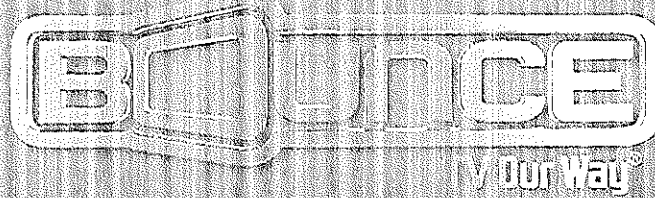
* * * * *

ALTHOUGH THESE PROGRAMS ARE NOT SUBJECT TO THE WEBSITE RULE BECAUSE THEY ARE PRODUCED FOR AND AIMED AT CHILDREN 13-16, NONETHELESS ME-TV NETWORK HAS ENDEAVORED TO COMPLY WITH THE RESTRICTION ON URLS DISPLAYED WITHIN SHOWS (SEE SECTIONS 73.670(b), (c) AND (d) OF THE RULES OF THE FEDERAL COMMUNICATIONS COMMISSION, 47 C.F.R. § 73.670(b), (c) AND (d)).

NONE OF THESE PROGRAMS CONTAINED ANY URLS, WITH THE POSSIBLE EXCEPTION OF (a) FICTIONAL URLS IN PROGRAMMING, (b) URLS OF COMMERCIAL-FREE WEBSITES THAT SATISFY 47 C.F.R. § 73.670(b), OR (c) URLS, NOT UNDER THE CONTROL OF THE LICENSEE, OF NON-PROFIT OR GOVERNMENT ENTITIES WITHIN PUBLIC SERVICE ANNOUNCEMENTS AIRED ON BEHALF OF THOSE ENTITIES, OR MEDIA COMPANIES IN PARTNERSHIP WITH THOSE ENTITIES.

Prepared by:

KYLE HART/ DIRECTOR OF NETWORK PROGRAMMING & OPERATIONS- ME-TV NETWORK
9/28/16



COMMERCIAL LIMITS AND WEBSITE RULE COMPLIANCE CERTIFICATION THIRD QUARTER 2016

During the third quarter of 2016 (July 1, 2016 – September 30, 2016) the following Educational/Informational programs tailored to meet the requirements for teens 13 – 16 years old appeared on the Bounce TV Network. As a result of these programs originally being created for and directed at teens 13 and above, the rules (47 C.F.R. § 73.670) for commercial limits and websites do not apply.

E/I Programs (series)

Program: Awesome Adventures (July 1, 2016 – September 30, 2016)

Time: Saturdays 10:00 AM - 10:30 AM ET

Duration: 30 minutes

Rating: TV-G E/I

Program: Live Life and Win (July 1, 2016 – September 4, 2016)

Time: Saturdays 10:30 AM - 11:00 AM ET

Duration: 30 minutes

Rating: TV-G E/I

Program: All In With Laila Ali (September 5, 2016 - September 30, 2016)

Time: Saturdays 10:30 AM - 11:00 AM ET

Duration: 30 minutes

Rating: TV-PG E/I

Program: Animal Atlas (July 1, 2016 – September 30, 2016)

Time: Saturdays 11:00 AM - 11:30 AM ET

Duration: 30 minutes

Rating: TV-G E/I

Program: Awesome Adventures (July 1, 2016 – September 30, 2016)

Time: Saturdays 11:30 AM - 12:00 PM ET

Duration: 30 minutes

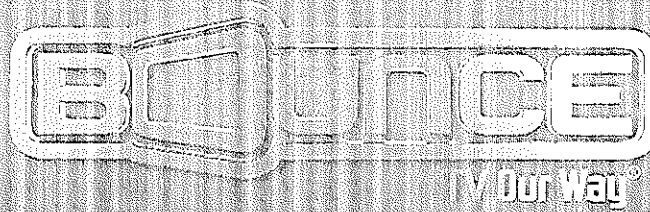
Rating: TV-G E/I

Program: Live Life and Win (July 1, 2016 – September 4, 2016)

Time: Sundays 10:00 AM - 10:30 AM ET

Duration: 30 minutes

Rating: TV-G E/I



COMMERCIAL LIMITS AND WEBSITE RULE COMPLIANCE CERTIFICATION THIRD QUARTER 2016

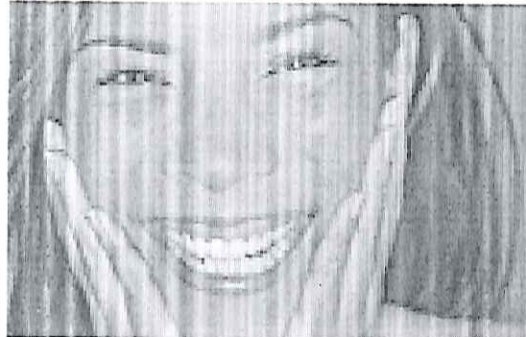
During the third quarter of 2016 (July 1, 2016 – September 30, 2016) the following Educational/Informational programs tailored to meet the requirements for teens 13 – 16 years old appeared on the Bounce TV Network. As a result of these programs originally being created for and directed at teens 13 and above, the rules (47 C.F.R. § 73.670) for commercial limits and websites do not apply.

E/I Programs (series)

Program: The Real Winning Edge (July 1, 2016 – September 4, 2016)
Time: Sundays 10:30 AM - 11:00 AM ET
Duration: 30 minutes
Rating: TV-PG E/I

Program: Everyday Health (September 5, 2016 - September 30, 2016)
Time: Sundays 10:00 AM - 10:30 AM ET
Duration: 30 minutes
Rating: TV-PG E/I

Program: Everyday Health (September 5, 2016 - September 30, 2016)
Time: Sundays 10:30 AM - 11:00 AM ET
Duration: 30 minutes
Rating: TV-PG E/I



Laff

YOU KNOW YOU WANT TO.

COMMERCIAL LIMITS AND WEBSITE RULE COMPLIANCE CERTIFICATION THIRD QUARTER 2016

During the third quarter of 2016 (July 1, 2016 – September 30, 2016) the following Educational/Informational programs tailored to meet the requirements for teens 13 – 16 years old appeared on the LAFF Network. As a result of these programs originally being created for and directed at teens 13 and above, the rules (47 C.F.R. § 73.670) for commercial limits and websites do not apply.

E/I Programs (series)

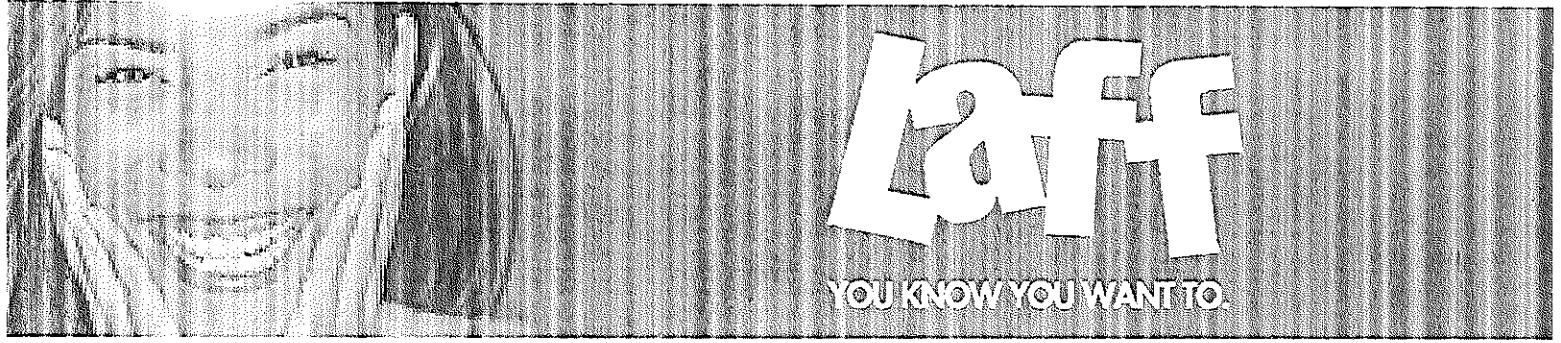
Program: Eco Company (July 1, 2016 – September 30, 2016)
Time: Saturdays 10:00- 10:30 AM ET
Duration: 30 minutes
Rating: TV-G E/I

Program: Swap TV (July 1, 2016 – September 30, 2016)
Time: Saturdays 10:30- 11:00 AM ET
Duration: 30 minutes
Rating: TV-G E/I

Program: Make: television (July 1, 2016 – September 30, 2016)
Time: Saturdays 11:00 AM- 11:30 AM ET
Duration: 30 minutes
Rating: TV-G E/I

Program: Animal Outtakes (July 1, 2016 – September 4, 2016) 10X
Time: Saturdays 11:30- 12:00 PM ET
Duration: 30 minutes
Rating: TV-PG E/I

Program: Reluctantly Healthy (September 5, 2016 – September 30, 2016) 3X
Time: Saturdays 11:30- 12:00 PM ET
Duration: 30 minutes
Rating: TV-PG E/I



COMMERCIAL LIMITS AND WEBSITE RULE COMPLIANCE CERTIFICATION THIRD QUARTER 2016

During the third quarter of 2016 (July 1, 2016 – September 30, 2016) the following Educational/Informational programs tailored to meet the requirements for teens 13 – 16 years old appeared on the LAFF Network. As a result of these programs originally being created for and directed at teens 13 and above, the rules (47 C.F.R. § 73.670) for commercial limits and websites do not apply.

E/I Programs (series)

Program: Eco Company (July 1, 2016 – September 30, 2016)
Time: Saturdays 12:00 - 12:30 PM ET
Duration: 30 minutes
Rating: TV-G E/I

Program: Swap TV (July 1, 2016 – September 30, 2016)
Time: Saturdays 12:30 - 1:00 PM ET
Duration: 30 minutes
Rating: TV-G E/I