



LITTON'S WEEKEND ADVENTURE

COMMERCIAL LOAD AND WEB SITE REPORT

1st QUARTER 2017

THE FOLLOWING IS A LIST OF ALL LITTON'S WEEKEND ADVENTURE PROGRAMS PROVIDED TO ABC AFFILIATES DESIGNED TO MEET THE EDUCATIONAL/INFORMATIONAL REQUIREMENT FOR CHILDREN THIRTEEN TO SIXTEEN YEARS OLD DURING THE FIRST QUARTER OF 2017. BECAUSE THESE PROGRAMS ARE ORIGINALLY PRODUCED FOR AND DIRECTED AT CHILDREN THIRTEEN TO SIXTEEN YEARS OLD, NEITHER THE COMMERCIAL LIMITS NOR THE WEBSITE RULE APPLY (SEE 47 C.F.R. § 73.670 (Note 2)). THIS CERTIFIES THAT ALL OF THESE PROGRAMS WERE FORMATTED (IN THE ORDER AND AT THE TIMES INDICATED) WITH THE FOLLOWING COMMERCIAL LOADS.

Children's Weekend Programs (series)

1. Program: Jack Hanna's Wild Countdown

Duration: Half-hour

Number of Network Commercial Minutes: 8:00

2. Program: Ocean Treks with Jeff Corwin

Duration: Half-hour

Number of Network Commercial Minutes: 8:00

3. Program: Sea Rescue
Duration: Half-hour
Number of Network Commercial Minutes: 8:00

4. Program: The Wildlife Docs
Duration: Half-hour
Number of Network Commercial Minutes: 8:00

5. Program: Rock the Park
Duration: Half-hour
Number of Network Commercial Minutes: 8:00

6. Program: Outback Adventures with Tim Faulkner
Duration: Half-hour
Number of Network Commercial Minutes: 8:00

Children's Weekend Specials

None

Children's Weekday Programs

None

Children's Weekday Specials

None

* * * * *

ALTHOUGH THESE PROGRAMS ARE NOT SUBJECT TO THE WEBSITE RULE BECAUSE THEY ARE PRODUCED FOR AND AIMED AT CHILDREN 13-16, NONETHELESS LITTON HAS ENDEAVORED TO COMPLY WITH THE RESTRICTION ON URLS DISPLAYED WITHIN SHOWS (SEE SECTIONS 73.670(b), (c) AND (d) OF THE RULES OF THE FEDERAL COMMUNICATIONS COMMISSION, 47 C.F.R. § 73.670(b), (c) AND (d)).

NONE OF THESE PROGRAMS CONTAINED ANY URLS, WITH THE POSSIBLE EXCEPTION OF (a) FICTIONAL URLS IN PROGRAMMING, (b) URLS OF COMMERCIAL-FREE WEBSITES THAT SATISFY 47 C.F.R. § 73.670(b), OR (c) URLS, NOT UNDER THE CONTROL OF THE LICENSEE, OF NON-PROFIT OR GOVERNMENT ENTITIES WITHIN PUBLIC SERVICE ANNOUNCEMENTS AIRED ON BEHALF OF THOSE ENTITIES, OR MEDIA COMPANIES IN PARTNERSHIP WITH THOSE ENTITIES.

Litton Entertainment
3/2/17

ME-TV NETWORK COMMERCIAL LIMITS
AND WEB SITE RULE COMPLIANCE CERTIFICATION,
FIRST QUARTER 2017

FOLLOWING IS A LIST OF ALL ME-TV NETWORK PROGRAMS DESIGNED TO MEET THE EDUCATIONAL/INFORMATIONAL REQUIREMENT FOR CHILDREN THIRTEEN TO SIXTEEN YEARS OLD DURING THE FIRST QUARTER OF 2017, JANUARY 1, 2017 THROUGH MARCH 31, 2017. BECAUSE THESE PROGRAMS ARE ORIGINALLY PRODUCED FOR AND DIRECTED AT CHILDREN THIRTEEN TO SIXTEEN YEARS OLD, NEITHER THE COMMERCIAL LIMITS NOR THE WEBSITE RULE APPLY (SEE 47 C.F.R. § 73.670 (Note 2)). THIS CERTIFIES THAT ALL OF THESE PROGRAMS WERE FORMATTED (IN THE ORDER AND AT THE TIMES INDICATED) WITH THE FOLLOWING COMMERCIAL LOADS.

Children's Programs (series)

1. Program: Mystery Hunters
Times: Sundays 7:00- 8:00 AM ET {Two (2) individual half-hour episodes}
Duration: 30 minutes
Rating: TV-G E/I
Number of Network Commercial Minutes: 5:00 or less per half-hour episode
2. Program: Beakman's World
Times: Sundays 8:00- 9:00 AM ET {Two (2) individual half-hour episodes}
Duration: 30 minutes
Rating: TV-G E/I
Number of Network Commercial Minutes: 5:00 or less per half-hour episode
3. Program: Bill Nye, the Science Guy
Times: Sundays 9:00- 10:00 AM ET {Two (2) individual half-hour episodes}
Duration: 30 minutes
Rating: TV-G E/I
Number of Network Commercial Minutes: 5:00 or less per half-hour episode
4. Program: Saved by the Bell
Times: Sundays 10:00 AM- 12:00 PM ET {Four (4) individual half-hour episodes}
Duration: 30 minutes
Rating: TV-G E/I
Number of Network Commercial Minutes: 7:00 or less per half-hour episode

* * * * *

ALTHOUGH THESE PROGRAMS ARE NOT SUBJECT TO THE WEBSITE RULE BECAUSE THEY ARE PRODUCED FOR AND AIMED AT CHILDREN 13-16, NONETHELESS ME-TV NETWORK HAS

ENDEAVORED TO COMPLY WITH THE RESTRICTION ON URLS DISPLAYED WITHIN SHOWS (SEE SECTIONS 73.670(b), (c) AND (d) OF THE RULES OF THE FEDERAL COMMUNICATIONS COMMISSION, 47 C.F.R. § 73.670(b), (c) AND (d)).

NONE OF THESE PROGRAMS CONTAINED ANY URLS, WITH THE POSSIBLE EXCEPTION OF (a) FICTIONAL URLS IN PROGRAMMING, (b) URLS OF COMMERCIAL-FREE WEBSITES THAT SATISFY 47 C.F.R. § 73.670(b), OR (c) URLS, NOT UNDER THE CONTROL OF THE LICENSEE, OF NON-PROFIT OR GOVERNMENT ENTITIES WITHIN PUBLIC SERVICE ANNOUNCEMENTS AIRED ON BEHALF OF THOSE ENTITIES, OR MEDIA COMPANIES IN PARTNERSHIP WITH THOSE ENTITIES.

Prepared by:
KYLE HART/ DIRECTOR OF NETWORK PROGRAMMING & OPERATIONS- ME-TV NETWORK
3/27/17

BOUNCE

COMMERCIAL LIMITS AND WEBSITE RULES COMPLIANCE CERTIFICATION FIRST QUARTER 2017

During the first quarter of 2017 (January 1, 2017 – March 31, 2017), the following Educational/Informational programs tailored to meet the requirements for teens 13 – 16 years old appeared on the Bounce Network. As a result of these programs originally being created for and directed at teens 13 and above, the rules (47 C.F.R. § 73.670) for commercial limits and websites do not apply.

E/I Programs (series)

Program: All In With Laila Ali (January 1, 2017 – March 31, 2017)
Time: Saturdays 10:00 AM - 10:30 AM ET
Duration: 30 minutes
Rating: TV-PG E/I

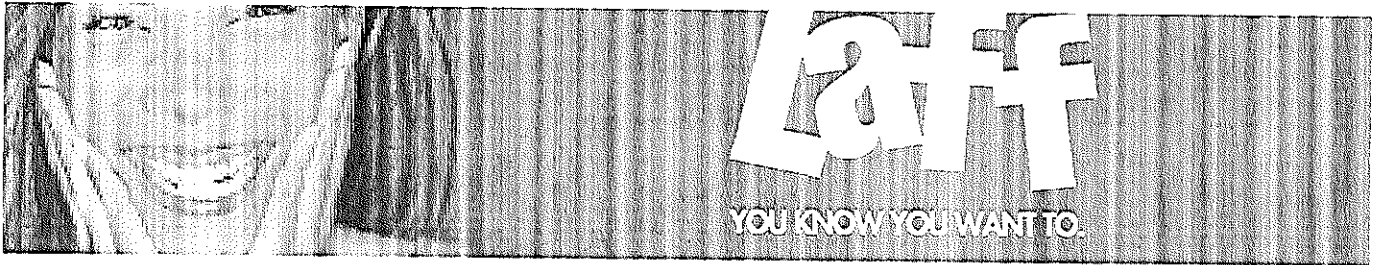
Program: All In With Laila Ali (January 1, 2017 – March 31, 2017)
Time: Saturdays 10:30 AM - 11:00 AM ET
Duration: 30 minutes
Rating: TV-PG E/I

Program: Culture Click (January 1, 2017 – March 31, 2017)
Time: Saturdays 11:00 AM – 11:30 AM ET
Duration: 30 minutes
Rating: TV-PG E/I

Program: Animal Tails (January 1, 2017 – March 31, 2017)
Time: Saturdays 11:30 AM - 12:00 PM ET
Duration: 30 minutes
Rating: TV-G E/I

Program: Everyday Health (January 1, 2017 – March 31, 2017)
Time: Saturdays 12:00 PM - 12:30 PM ET
Duration: 30 minutes
Rating: TV-PG E/I

Program: Everyday Health (January 1, 2017 – March 31, 2017)
Time: Saturdays 12:30 PM - 1:00 PM ET
Duration: 30 minutes
Rating: TV-PG E/I



COMMERCIAL LIMITS AND WEBSITE RULES COMPLIANCE CERTIFICATION FIRST QUARTER 2017

During the first quarter of 2017 (January 1, 2017 – March 31, 2017), the following Educational/Informational programs tailored to meet the requirements for teens 13 – 16 years old appeared on the LAFF Network. As a result of these programs originally being created for and directed at teens 13 and above, the rules (47 C.F.R. § 73.670) for commercial limits and websites do not apply.

E/I Programs (series)

Program: Jack Hanna's Animal Adventures (January 1, 2017 – March 31, 2017)
Time: Saturdays 10:00 AM - 10:30 AM ET
Duration: 30 minutes
Rating: TV-G E/I

Program: Outback Adventures With Tim Faulkner (January 1, 2017 – March 31, 2017)
Time: Saturdays 10:30 AM - 11:00 AM ET
Duration: 30 minutes
Rating: TV-G E/I

Program: Outback Adventures With Tim Faulkner (January 1, 2017 – March 31, 2017)
Time: Saturdays 11:00 AM - 11:30 AM ET
Duration: 30 minutes
Rating: TV-G E/I

Program: Rescue Me With Dr. Lisa (January 1, 2017 – March 31, 2017)
Time: Saturdays 11:30 AM - 12:00 PM ET
Duration: 30 minutes
Rating: TV-PG E/I

Program: Food For Thought With Claire Thomas (January 1, 2017 – March 31, 2017)
Time: Saturdays 12:00 PM - 12:30 PM ET
Duration: 30 minutes
Rating: TV-G E/I

Program: Food For Thought With Claire Thomas (January 1, 2017 – March 31, 2017)
Time: Saturdays 12:30 PM - 1:00 PM ET
Duration: 30 minutes
Rating: TV-G E/I