

CHILDREN'S TV PROGRAMMING COMMERCIAL CERTIFICATION

WBDT-TV ("Station") certifies that all 12-and-under children's TV programs carried during this quarter on its analog and digital channels were formatted so that, as a matter of standard policy and practice, the programs would not exceed the "commercial matter" time limits of §73.670(a) of the FCC's rules:

Weekdays: 12 minutes in any clock-hour children's programming (6 minutes in a stand-alone half-hour program)

Weekends: 10.5 minutes in any clock-hour children's programming (5.25 minutes in a stand-alone half-hour program).

Program Title	
<i>Calling Dr. Pol (CW)</i>	<i>Awesome Adventures (Bounce)</i>
<i>DogTown USA (CW)</i>	<i>Live Life & Win (Bounce)</i>
<i>Dog Whisperer: Family Edition (CW)</i>	<i>Animal Atlas (Bounce)</i>
<i>Dream Quest (CW)</i>	<i>Doki (ION)</i>
<i>Hatched (CW)</i>	<i>The Choo Choo Bob Show (ION)</i>
<i>Save Our Shelter (CW)</i>	<i>Dive Olly Dive (ION)</i>
<i>The Real Winning Edge (Bounce)</i>	

- Station certifies that there were not any time periods during the quarter in which the "commercial matter" time limits stated above were exceeded during 12-and-under children's programming.

 Yes No

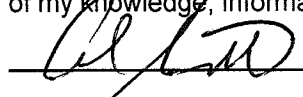
If no, provide details of each such instance in an attachment.

- Station certifies that, during the quarter, it has complied with the commercial requirements of §73.670(b),(c) & (d) of the FCC's rules regarding the display of internet website addresses during 12-and-under children's programming, which requirements became effective January 2, 2007.

 Yes No

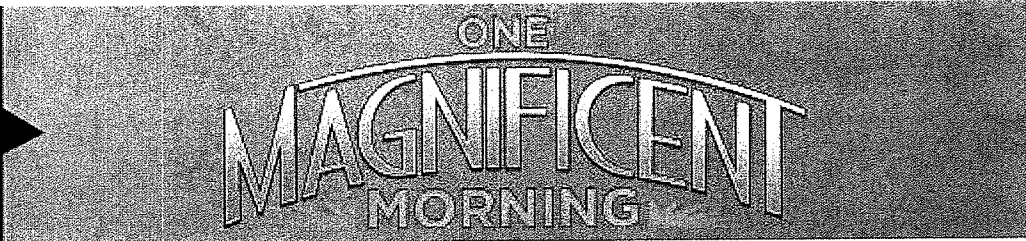
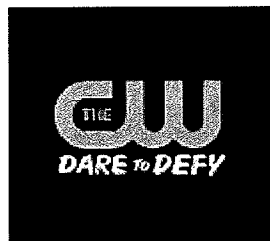
If no, provide details in an attachment.

I hereby state, under penalty or perjury, that the forgoing is true, correct and complete to the best of my knowledge, information, and belief.


4/7/2016
Al Schmidt
 Signature/Title of Authorized Station Employee Chief Engineer

Date: 4/7/2016

[Attach any commercial certification or confirmation provided by network and program suppliers.]



MEMORANDUM

To: General Managers, Program Directors, Program Managers
From: Affiliate Relations
Date: March 15, 2016
Subject: **1st Quarter 2016: CW Television Network Teen/Young Viewer Programming**

The CW Television Network Teen/Young Viewer Programming

Below is a list of 1st Quarter 2016 CW Teen/Young Viewer Programming for your public files.

Statement

This statement is designed to furnish you with additional information concerning the commercial matter contained in the network's teen/young viewer programs, and to enable you to more easily comply with the requirements of the Children's Television Act of 1990.

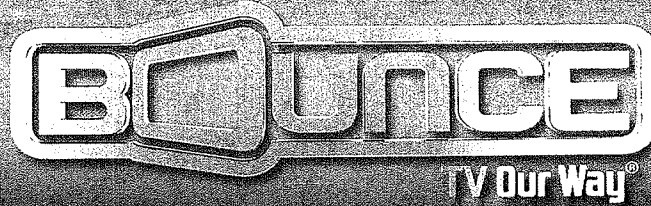
The following is a list of all CW Television Network programs which were produced and broadcast with the intention of primarily reaching an audience of young viewers between thirteen and sixteen that were scheduled for broadcast during the first quarter of 2016.

1st QUARTER 2016 – CW TEEN/YOUNG VIEWER PROGRAMMING

Program: Calling Dr. Pol
Rating: TV G
Length: 30 min

Program: DogTown USA
Rating: TV G
Length: 30 min

Program: Dog Whisperer with Cesar Millan: Family Edition
Rating: TV G



COMMERCIAL LIMITS AND WEBSITE RULE COMPLIANCE CERTIFICATION FIRST QUARTER 2016

During the first quarter of 2016 (January 1, 2016 – March 31, 2016) the following Educational/Informational programs tailored to meet the requirements for teens 13 – 16 years old appeared on the Bounce TV Network. As a result of these programs originally being created for and directed at teens 13 and above, the rules (47 C.F.R. § 73.670) for commercial limits and websites do not apply.

E/I Programs (series)

Program: Awesome Adventures (January 1, 2016 – March 31, 2016)
Time: Saturdays 10:00 AM - 10:30 AM ET
Duration: 30 minutes
Rating: TV-G E/I

Program: Live Life and Win (January 1, 2016 – March 31, 2016)
Time: Saturdays 10:30 AM - 11:00 AM ET
Duration: 30 minutes
Rating: TV-G E/I

Program: Animal Atlas (January 1, 2016 – March 31, 2016)
Time: Saturdays 11:00 AM - 11:30 AM ET
Duration: 30 minutes
Rating: TV-G E/I

Program: Awesome Adventures (January 1, 2016 – March 31, 2016)
Time: Saturdays 11:30 AM - 12:00 PM ET
Duration: 30 minutes
Rating: TV-G E/I

Program: Live Life and Win (January 1, 2016 – March 31, 2016)
Time: Sundays 10:00 AM - 10:30 AM ET
Duration: 30 minutes
Rating: TV-G E/I

Program: The Real Winning Edge (January 1, 2016 – March 31, 2016)
Time: Sundays 10:30 AM - 11:00 AM ET
Duration: 30 minutes
Rating: TV-PG E/I

Length: 30 min

Program: Dream Quest

Rating: TV G

Length: 30 min

Program: Hatched

Rating: TV G

Length: 30 min

Program: Save Our Shelter

Rating: TV G

Length: 30 min

Please contact your CW Affiliate Representative with any questions.

qubo

Certification Regarding Commercial Limits in Children's Programming

Period Covered by this Certification: 1st Quarter 2016

I, Michael S. Hubner, in my capacity as Secretary of ION Media Networks, Inc., majority owner of QUBO Venture LLC, hereby certify that, during the above-referenced time period:

1. The regularly scheduled weekly three-hour qubo programming block, including any commercial spots and promotional content contained therein, as broadcast on the ION Television Network (the "Network Programming") complied with the commercial limits of the rules and policies of the Federal Communications Commission's commercial limits during children's programming (the "Rules").
2. No internet website addresses were displayed during the Network Programming in a manner that would constitute commercial content within the meaning of the Rules.
3. The regularly scheduled 24/7 qubo programming channel, including any commercial spots and promotional content contained therein, as broadcast on a digital multicast channel of the ION Television Network (the "Digital Programming") complied with the Rules and no internet website addresses were displayed during the Digital Programming in a manner that would constitute commercial time within the meaning of the Rules.

Certified by me on the 4th day of April, 2016.



Michael S. Hubner, Secretary
ION Media Networks, Inc.

ION TELEVISION:

1. Wednesdays January 1st –
March 31st:

Doki (E/I) 8:00 a.m. and 8:30 am ET/PT
or 7:00 a.m. and 7:30 am CT/MT

2. Thursdays January 1st –
March 31st:

The Choo Choo Bob Show (E/I), 8:00 am
and 8:30 am ET/PT or 7:00 a.m. and 7:30
a.m. CT/MT

3. Fridays January 1st –
March 31st:

Raggs (E/I), 8:00 a.m. and 8:30 a.m.
ET/PT or 7:00 a.m. and 7:30 a.m.